

O.D.O.T. DISTRICT 2 SURVEY OFFICE (USE ONLY)

PERSONNEL

REFERENCE NO. 33

SHEET 28 OF 34

NOTES RHOADES DATE 9/7/18
 H.C. O'DONNELL WEATHER CLOUDY
 R.C. RHOADES TEMP. 65°

ROUTE SR 281
 COUNTY HENRY
 TOWNSHIP RICHFIELD
 SECTION 26
 T 4 N R 8 E

DWG BY NIESE PID PAVETRAIN

TYPE MONUMENT P.K./WASHER

ON SURFACE - ~~BELOW~~ ON

OFFSET 4.5' TO RT EDGE PAVEMENT

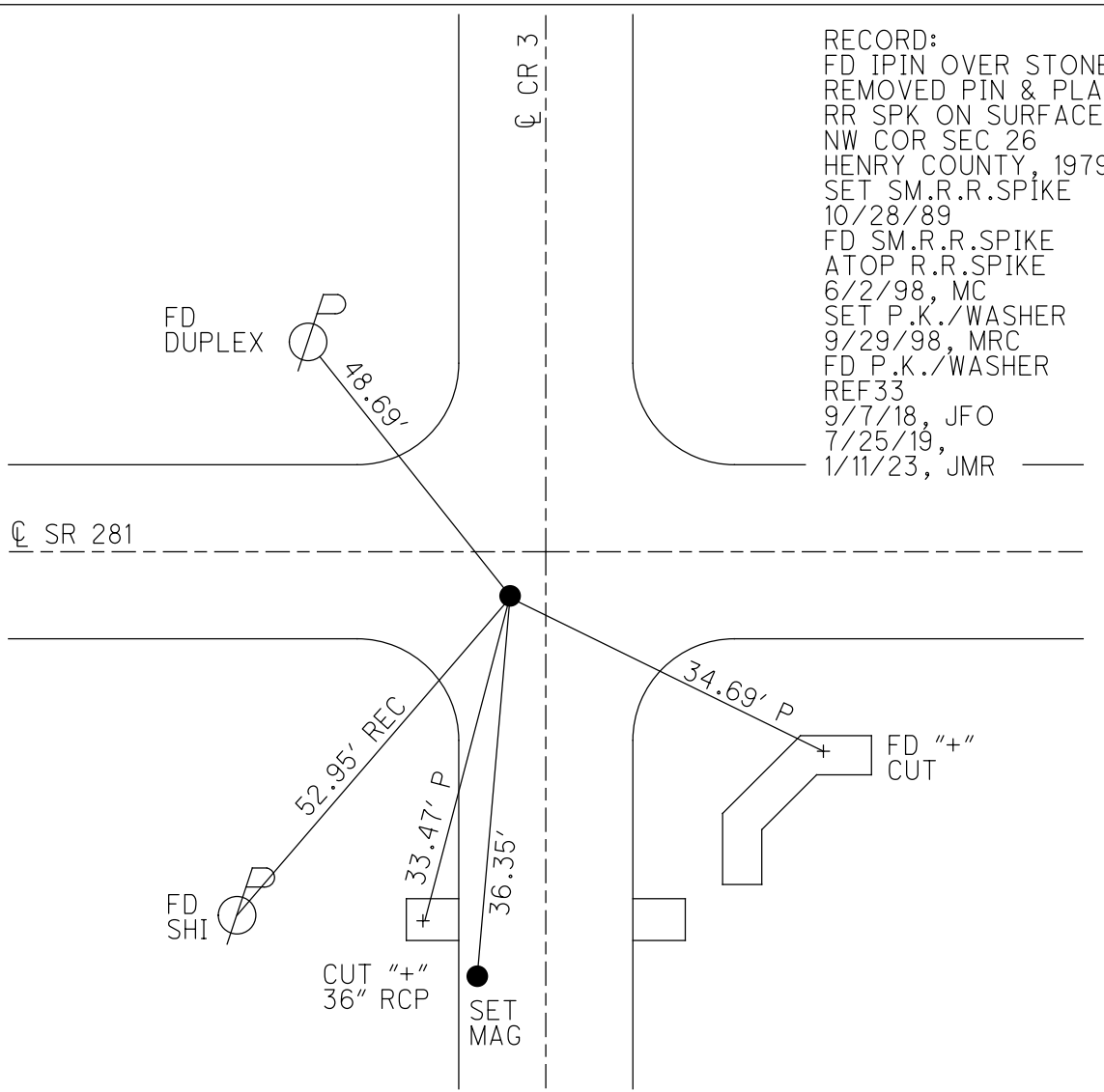
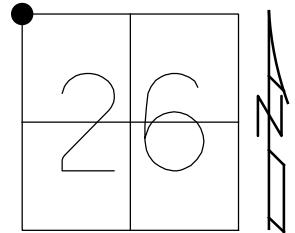
STATION: 840+91

HORZ.DATUM: NAD83(2011)

GEOID: 2012A

GRID: NORTHING: 592383.286

EASTING: 1577861.760



RECORD:
 FD IPIN OVER STONE
 REMOVED PIN & PLACED
 RR SPK ON SURFACE
 NW COR SEC 26
 HENRY COUNTY, 1979
 SET SM.R.R.SPIKE
 10/28/89
 FD SM.R.R.SPIKE
 ATOP R.R.SPIKE
 6/2/98, MC
 SET P.K./WASHER
 9/29/98, MRC
 FD P.K./WASHER
 REF 33
 9/7/18, JFO
 7/25/19,
 1/11/23, JMR

O.D.O.T. DISTRICT 2 SURVEY OFFICE (USE ONLY)

PERSONNEL

REFERENCE NO. 33

SHEET 28 OF 34

NOTES RHOADES

DATE 9/7/18

ROUTE SR 281

H.C. O'DONNELL

WEATHER CLOUDY

COUNTY HENRY

R.C. RHOADES

TEMP. 65°

TOWNSHIP RICHFIELD

DWG BY NIESE

PID CHIP_2

SECTION 26

T 4 N R 8 E

TYPE MONUMENT P.K./WASHER

ON SURFACE - ~~BELOW~~ ON

OFFSET C PAVEMENT 5.2' RT : RT

4.5' TO RT EDGE PAVEMENT

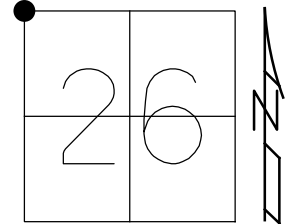
STATION: 840+91

HORZ.DATUM: NAD83(2011)

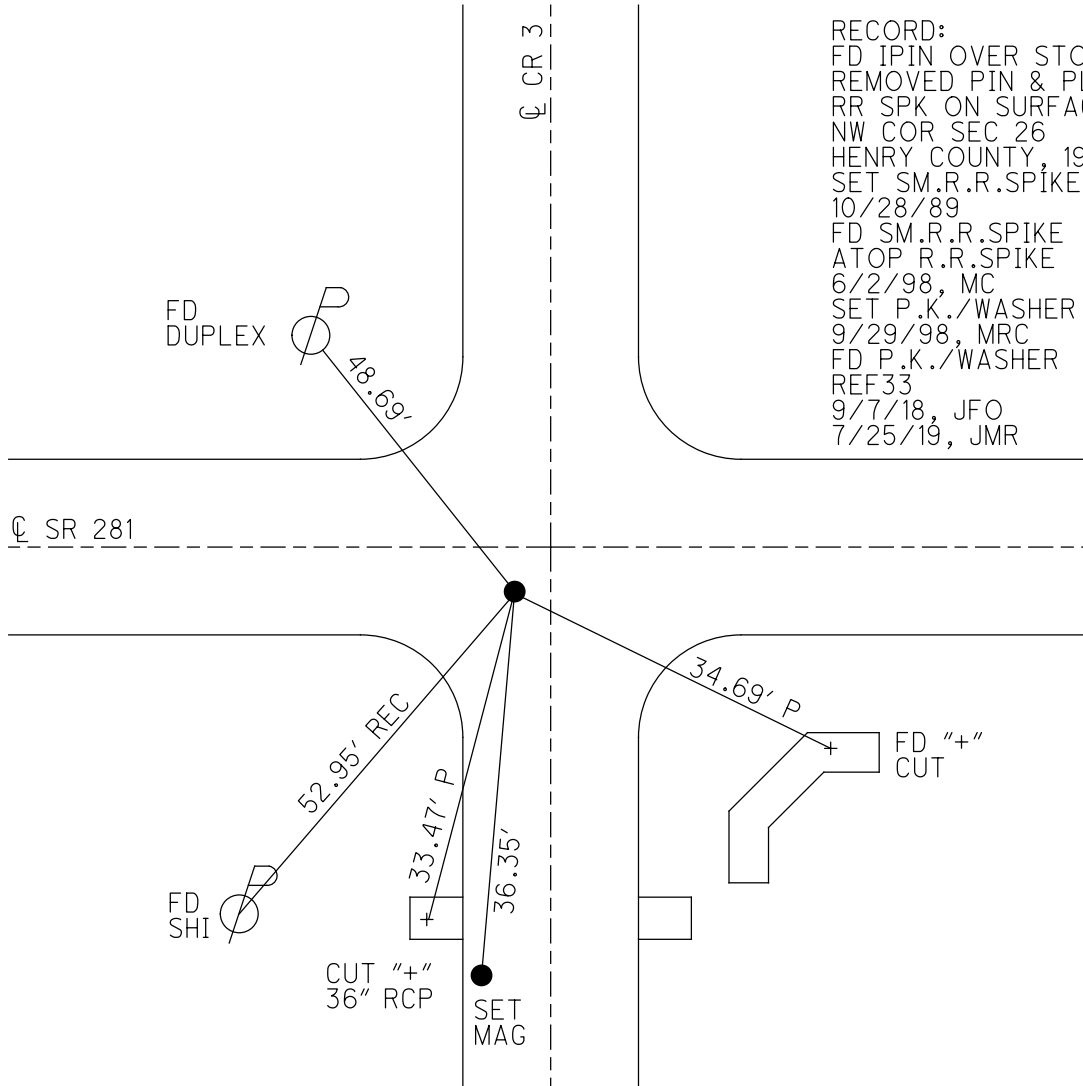
GEOID: 2012A

GRID: NORTHING: 592383.286

EASTING: 1577861.760



RECORD:
 FD IPIN OVER STONE
 REMOVED PIN & PLACED
 RR SPK ON SURFACE
 NW COR SEC 26
 HENRY COUNTY, 1979
 SET SM.R.R.SPIKE
 10/28/89
 FD SM.R.R.SPIKE
 ATOP R.R.SPIKE
 6/2/98, MC
 SET P.K./WASHER
 9/29/98, MRC
 FD P.K./WASHER
 REF33
 9/7/18, JFO
 7/25/19, JMR



O.D.O.T. DISTRICT 2 SURVEY OFFICE

PERSONNEL

REFERENCE NO. 33

SHEET 29 OF 34

NOTES CANTERBURY

H.C. Rousos

R.C. Nuffer

DATE 6-2-98

WEATHER Sunny

TEMP. +70°F

ROUTE SR 281

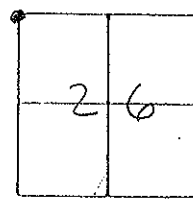
COUNTY Henry

TOWNSHIP Richfield

SECTION 26

T4 NR 8 E

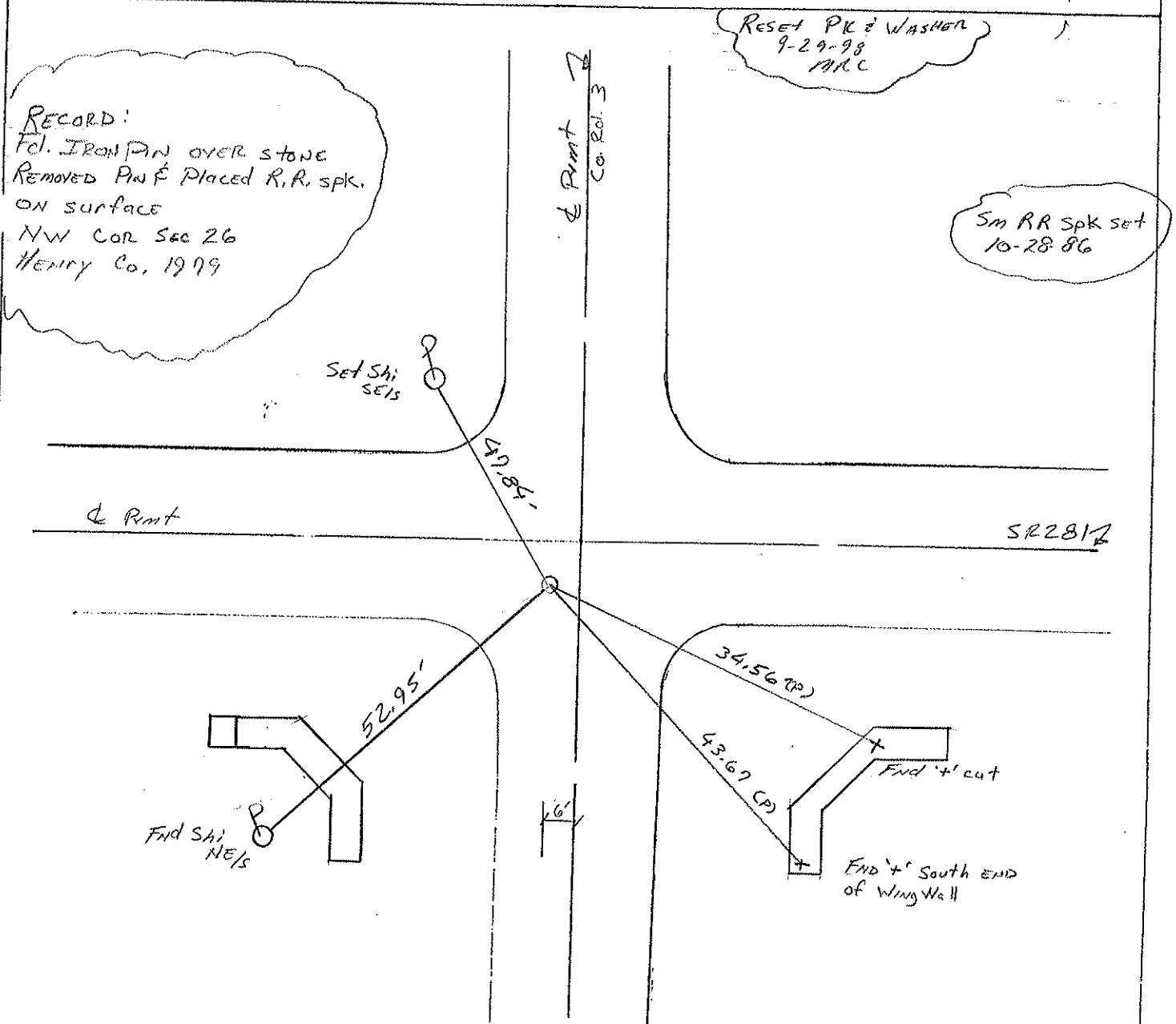
TYPE MONUMENT Sm RR spk atop RR spike
ON SURFACE - ~~BELOW~~ Surface
~~LEFT - & PAV'T. - RIGHT S, 2 RT~~
4.5' TO RT EDGE PAVEMENT
S.L. ~~25~~ 25 + 619.90 SLK (840 + 91 SLK)



RECORD:
FD. IRON PIN OVER STONE
REMOVED PIN & PLACED R.R. SPK.
ON SURFACE
NW COR SEC 26
HENRY CO., 1979

RESET PK & WASHER
9-29-98
MRC

Sm RR Spk set
10-28-86



O.D.O.T. DISTRICT 2 SURVEY OFFICE

PERSONNEL _____

REFERENCE NO. 33

SHEET _____ OF _____

NOTES LOHRKE

H.C. BARNHISEL

R.C. SOCKMAN

DATE 8-11-86

WEATHER Pt Cloudy

TEMP. +64

ROUTE SR 281

COUNTY HENRY

TOWNSHIP RICHFIELD

SECTION 26

T4 N R 8 E

TYPE MONUMENT R.R. SPIKE

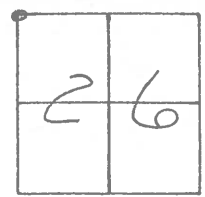
ON SURFACE - BELOW yes

~~LEFT~~ - ~~PAV'T.~~ - RIGHT 5.0'

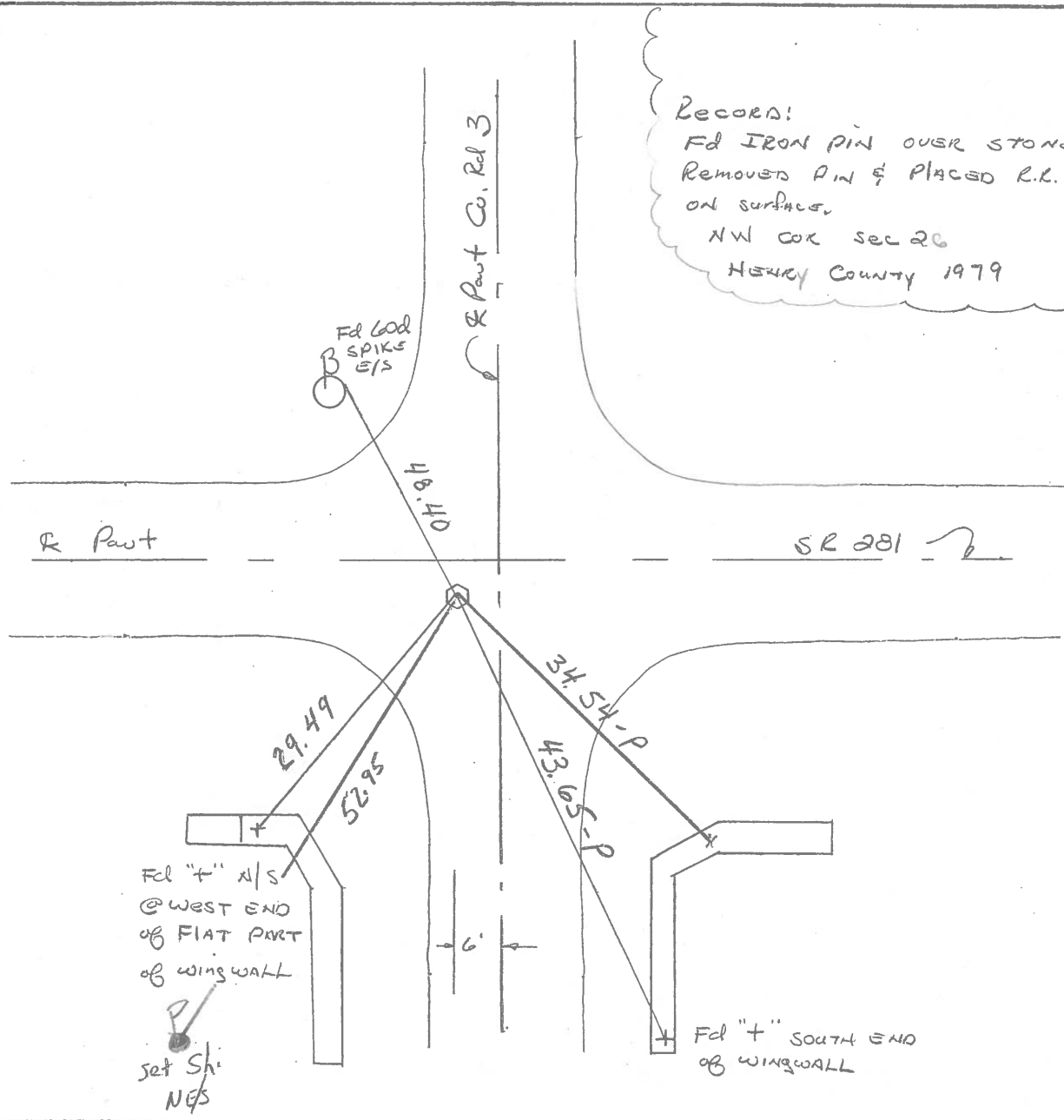
4.3' TO RT EDGE PAVEMENT

S.L.M. 840+91

Set small
R.R. SPIKE
10-28-86



RECORDS:
Fd IRON PIN OVER STONE
REMOVED PIN & PLACED R.R. SPIKE
ON SURFACE.
NW COR SEC 26
HENRY COUNTY 1979

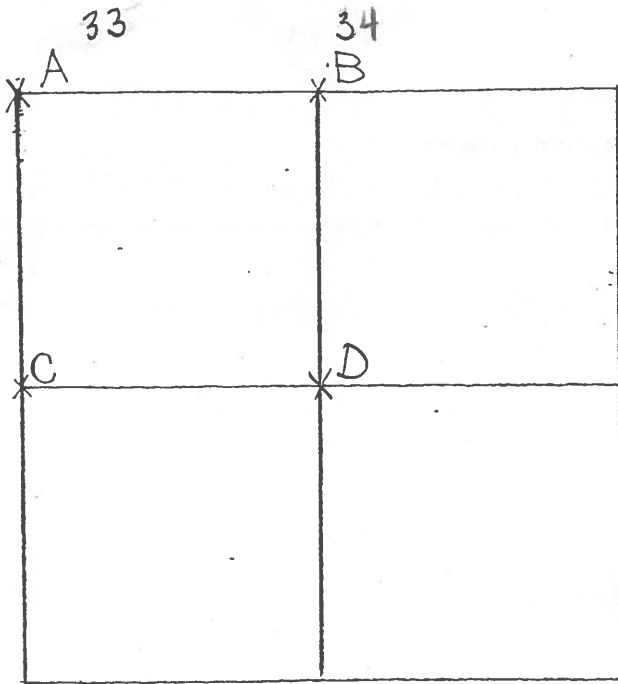


COUNTY HENRY

SHEET 1 OF 2
T-4-N, R-8-7E

TOWNSHIP RICHFIELD

SECTION 26



8-8-79 R.W, J.J, G.M.

A - FOUND IRON PIN IN CLAY TILE
OVER HIGH POINT OF STONE (8" x 8" x 10")
12" BELOW ROAD SURFACE. ALSO
FOUND FLAT STONE (8" x 10" x 4") UNDER
TRUE STONE. REMOVED IRON PIN.
PLACED CENTER PUNCHED R.R. SPIKE
ON SURFACE OVER HIGH POINT OF
TRUE STONE. P.K.'S 6' N. & W.

STONE IS 4.2' NORTH OF SOUTH EDGE OF 18' PAVEMENT.

48.37' N.W. TO GOD SPIKE E/S BRACE POLE

34.51' S.E. TO "+" TOP CONC. HEADWALL.

29.43' S.W. TO "+" TOP CONC. HEADWALL.

52.35' N.W. TO CENTER U.S.G.S. BENCH MARK A-117 1947

8-7-79 R.W, J.J, G.M.

B - FOUND IRON PIPE OVER TOP CENTER OF STONE (9" x 10" x 14") 19" BELOW
ROAD SURFACE. REMOVED IRON PIPE. PLACED CENTER PUNCHED RAILROAD
SPIKE ON SURFACE OVER TOP CENTER OF STONE. P.K.'S 6' N. & W.

STONE IS 1.0' NORTH OF SOUTH EDGE OF 18' PAVEMENT.

45.61' W.N.W. TO SHINER E/S I

44.09' N. TO NEAR FACE WOOD COR. POST

73.89' S.S.E. TO N.W. COR. HOUSE FOUNDATION.

46.73' S. TO DUPLEX W/S 22" MAPLE

39.78' S.W. TO "+" TOP WEST END OF R.C.P. (PLUMBED)

62.69' S.W. TO SHINER E/S J