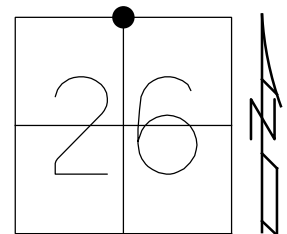


O.D.O.T. DISTRICT 2 SURVEY OFFICE (USE ONLY)

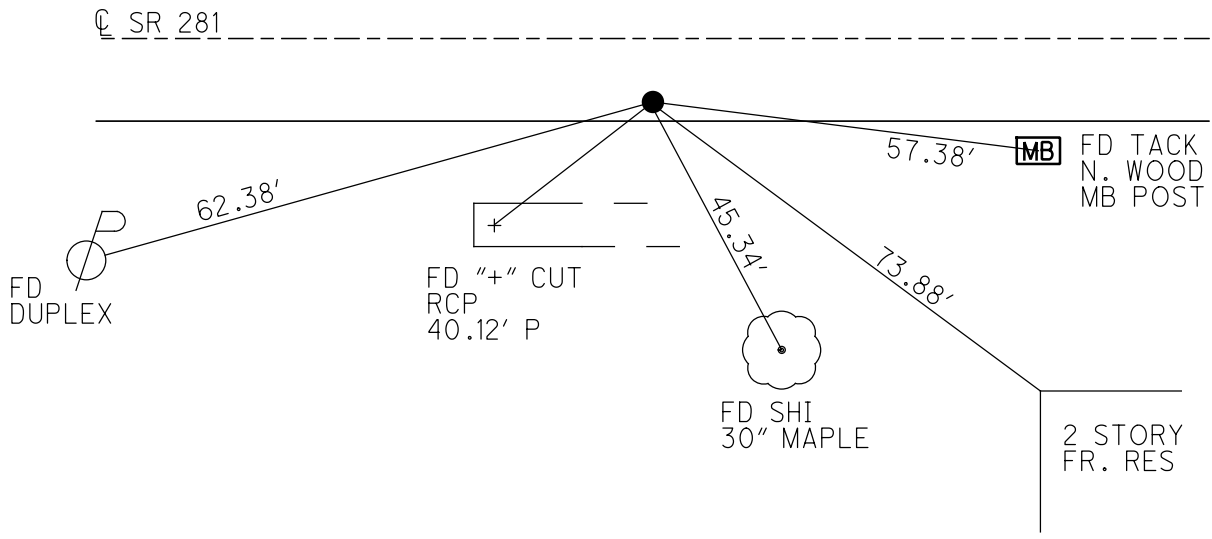
PERSONNEL _____ REFERENCE NO. 34 SHEET 29 OF 34
 NOTES RHOADES DATE 9/7/18 ROUTE SR 281
 H.C. O'DONNELL WEATHER CLOUDY COUNTY HENRY
 R.C. RHOADES TEMP. 69° TOWNSHIP RICHFIELD
 DWG BY NIESE PID PAVETRAN SECTION 26
 T 4 N R 8 E

TYPE MONUMENT SM.R.R.SPIKE
 ON SURFACE - ~~BELOW~~ ON
 OFFSET 1.6' TO RT EDGE PAVEMENT
 STATION: 867+60



HORZ.DATUM: NAD83(2011) GEOID: 2012A
 GRID: NORTHING: 592370.588 EASTING: 1580527.030

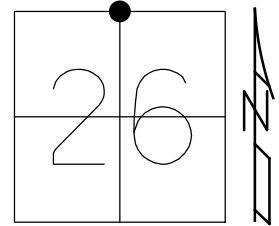
RECORD:
 N¹/₄ CORNER SEC 26
 FD IPIPE OVER STONE
 REMOVED PIPE AND PLACED
 RR SPIKE OVER STONE
 HENRY CO., 1979
 SET SM.R.R.SPIKE
 10/28/86
 FD SM.R.R.SPIKE
 ATOP R.R.SPIKE
 6/2/98, MC
 SET P.K./WASHER
 9/29/98, MRC
 FD SM.R.R.SPIKE
 REF34
 9/7/18, JFO
 7/25/19,
 1/11/23, JMR



O.D.O.T. DISTRICT 2 SURVEY OFFICE (USE ONLY)

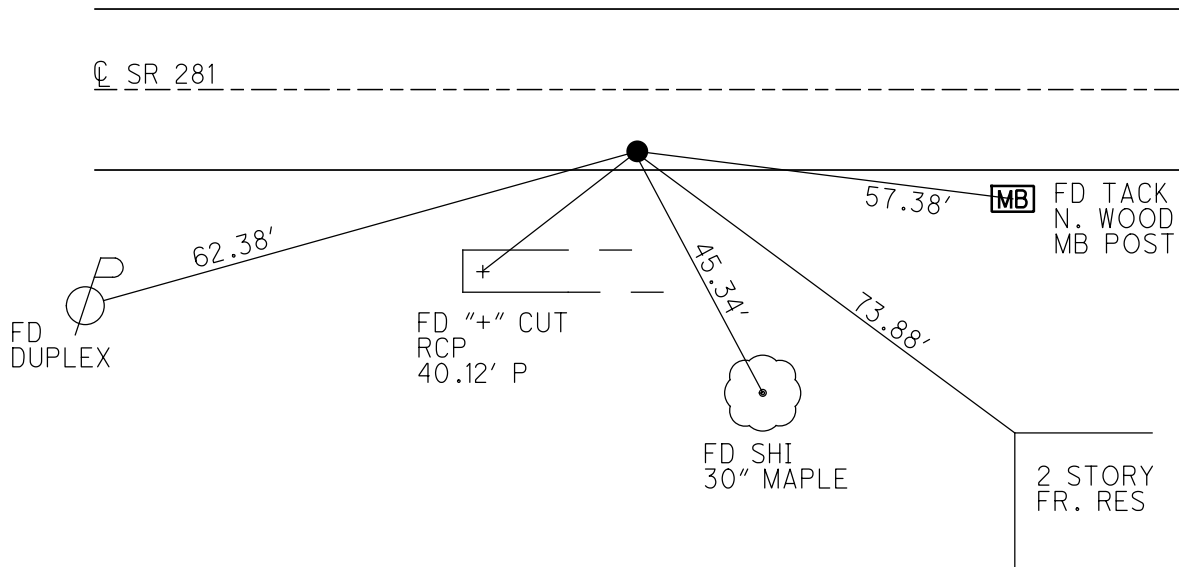
PERSONNEL _____ REFERENCE NO. 34 SHEET 29 OF 34
 NOTES RHOADES DATE 9/7/18 ROUTE SR 281
 H.C. O'DONNELL WEATHER CLOUDY COUNTY HENRY
 R.C. RHOADES TEMP. 69° TOWNSHIP RICHFIELD
 DWG BY NIESE PID CHIP_2 SECTION 26
 T 4 N R 8 E

TYPE MONUMENT SM.R.R.SPIKE
 ON SURFACE - ~~BELOW~~ ON
 OFFSET \odot PAVEMENT 8.1' ~~LT~~ : RT
1.6' TO RT EDGE PAVEMENT
 STATION: 867+60



HORZ.DATUM: NAD83(2011) GEOID: 2012A
 GRID: NORTHING: 592370.588 EASTING: 1580527.030

RECORD:
 N¹/₄ CORNER SEC 26
 FD IPIPE OVER STONE
 REMOVED PIPE AND PLACED
 RR SPIKE OVER STONE
 HENRY CO., 1979
 SET SM.R.R.SPIKE
 10/28/86
 FD SM.R.R.SPIKE
 ATOP R.R.SPIKE
 6/2/98, MC
 SET P.K./WASHER
 9/29/98, MRC
 FD SM.R.R.SPIKE
 REF34
 9/7/18, JFO
 7/25/19, JMR



O.D.O.T. DISTRICT 2 SURVEY OFFICE

PERSONNEL _____

REFERENCE NO. 34 SHEET 30 OF 34

NOTES Conterbury

H.C. Rossas

R.C. Nuffer

DATE 6-2-98

WEATHER Sunny

TEMP. +70°F

ROUTE SR 281

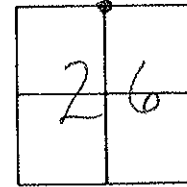
COUNTY HENRY

TOWNSHIP Richfield

SECTION 26

T. 4 N R. 8 E

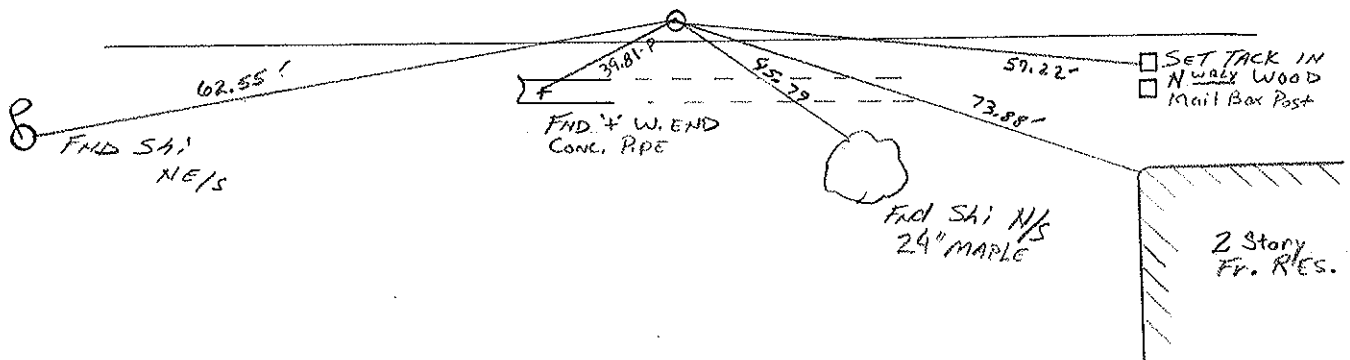
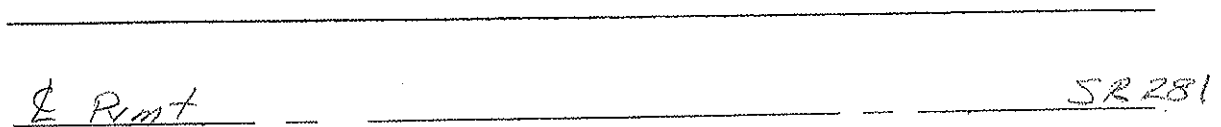
TYPE MONUMENT Sm. RR spk atop RR spk
 ON SURFACE - BELOW surface
 LEFT - € PAV'T. - RIGHT 8.1 Rt
1.6' TO RT EDGE PAVEMENT
S.L.M. 26+431.70 SLK; 867+60 SLM



Reset PK & Washer
9-29-98
MRL

RECORD
N 1/4 CORNER SEC 26
FND I. PIPE OVER STONE
REMOVED PIPE & PLACED
RR SPIKE OVER STONE
HENRY Co. 1999

Sm. RR Spk set
10-28-86



O.D.O.T. DISTRICT 2 SURVEY OFFICE

PERSONNEL _____

REFERENCE NO. 34

SHEET _____ OF _____

NOTES LOEHRKE

H.C. BARUHSEL

R.C. SACKMAN

DATE 8-11-86

WEATHER CLOUDY

TEMP. +65

ROUTE SR 281

COUNTY HENRY

TOWNSHIP RICHFIELD

SECTION 26

T4 N R 8 E

TYPE MONUMENT R.R. SPIKE

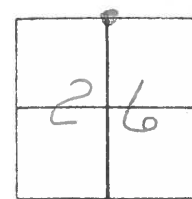
ON SURFACE - ~~BELOW~~ Yes

~~LEFT - C PAV'T.~~ - RIGHT 8.4'

O.S. TO RT EDGE PAVEMENT

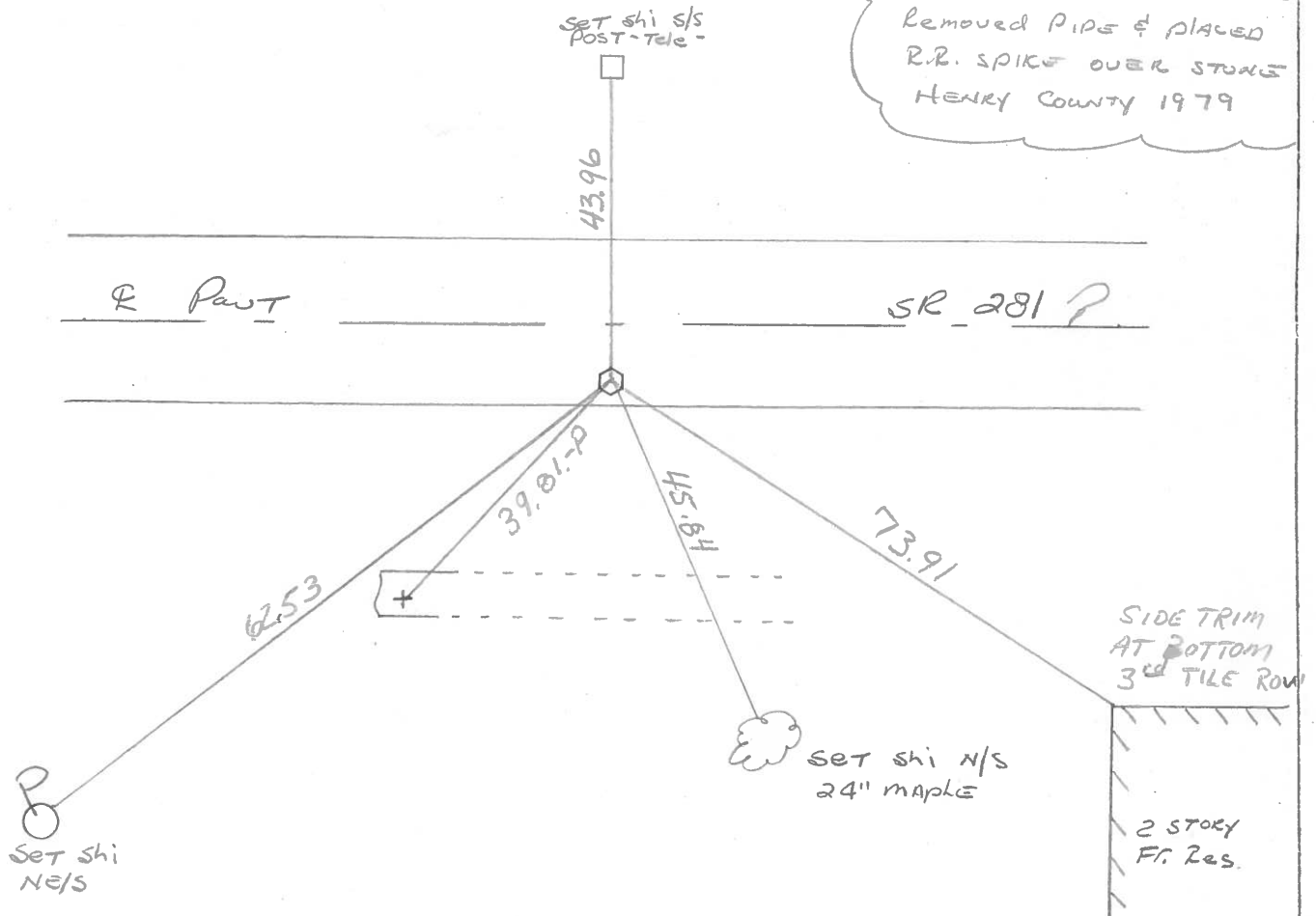
S.L.M. 867+60

Set small
R.R. SPIKE
10-28-86



Records:

N 1/4 COR Sec 26
Fd. I. PIPE OVER STONE
Removed PIPE & PLACED
R.R. SPIKE OVER STONE
HENRY COUNTY 1979

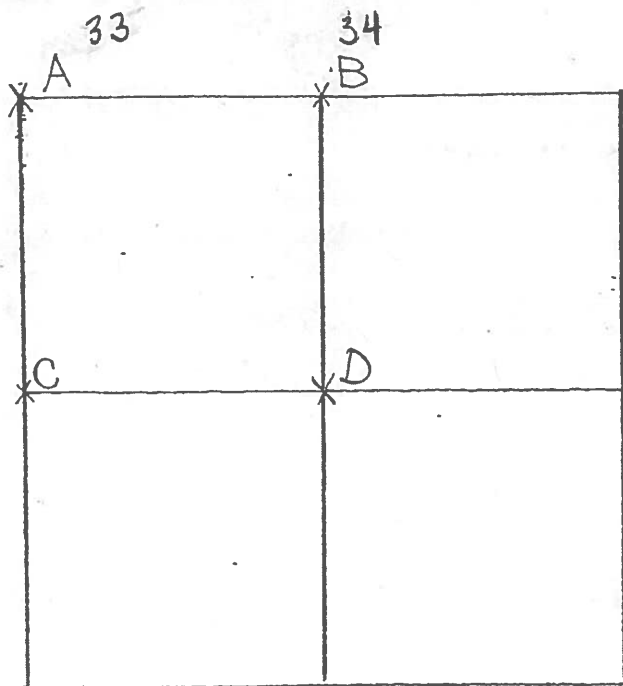


COUNTY HENRY

T-4-N , R-8-7 E

TOWNSHIP RICHFIELD

SECTION 26



8-8-79 R.W, J.J, G.M.

A - FOUND IRON PIN IN CLAY TILE
 OVER HIGH POINT OF STONE (8" x 8" x 10")
 12" BELOW ROAD SURFACE. ALSO
 FOUND FLAT STONE (8" x 10" x 4") UNDER
 TRUE STONE. REMOVED IRON PIN.
 PLACED CENTER PUNCHED R.R. SPIKE
 ON SURFACE OVER HIGH POINT OF
 TRUE STONE. P.K.'s 6' N. & W.

STONE IS 4.2' NORTH OF SOUTH EDGE OF 18' PAVEMENT.

48.37' N.W. TO 60D SPIKE E/S BRACE POLE

34.51' S.E. TO "+" TOP CONC. HEADWALL.

29.43' S.W. TO "+" TOP CONC. HEADWALL.

52.35' N.W. TO CENTER U.S.G.S. BENCH MARK A-117 1947

8-7-79 R.W, J.J, G.M.

B - FOUND IRON PIPE OVER TOP CENTER OF STONE (9" x 10" x 14") 19" BELOW
 ROAD SURFACE. REMOVED IRON PIPE. PLACED CENTER PUNCHED RAILROAD
 SPIKE ON SURFACE OVER TOP CENTER OF STONE. P.K.'s 6' N. & W.

STONE IS 1.0' NORTH OF SOUTH EDGE OF 18' PAVEMENT.

45.61' W.N.W. TO SHINER E/S I

44.09' N. TO NEAR FACE WOOD COR. POST

73.89' S.S.E. TO N.W. COR. HOUSE FOUNDATION.

46.73' S. TO DUPLEX W/S 22" MAPLE

39.78' S.W. TO "+" TOP WEST END OF R.C.P. (PLUMBED)

62.69' S.W. TO SHINER E/S J