

O.D.O.T. DISTRICT 2 SURVEY OFFICE (USE ONLY)

PERSONNEL

REFERENCE NO. 35

SHEET 30 OF 34

NOTES RHOADES DATE 9/7/18
 H.C. O'DONNELL WEATHER CLOUDY
 R.C. RHOADES TEMP. 69°

ROUTE SR 281
 COUNTY HENRY
 TOWNSHIP RICHFIELD
 SECTION 25
 T 4 N R 8 E

DWG BY NIESE PID PAVETRAN

TYPE MONUMENT R.R.SPIKE

~~ON SURFACE~~ - BELOW 1"

OFFSET \varnothing PAVEMENT 10.0' ~~LT~~ : RT

ON TO RT EDGE PAVEMENT

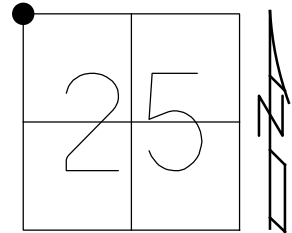
STATION: 899+27

HORZ.DATUM: NAD83(2011)

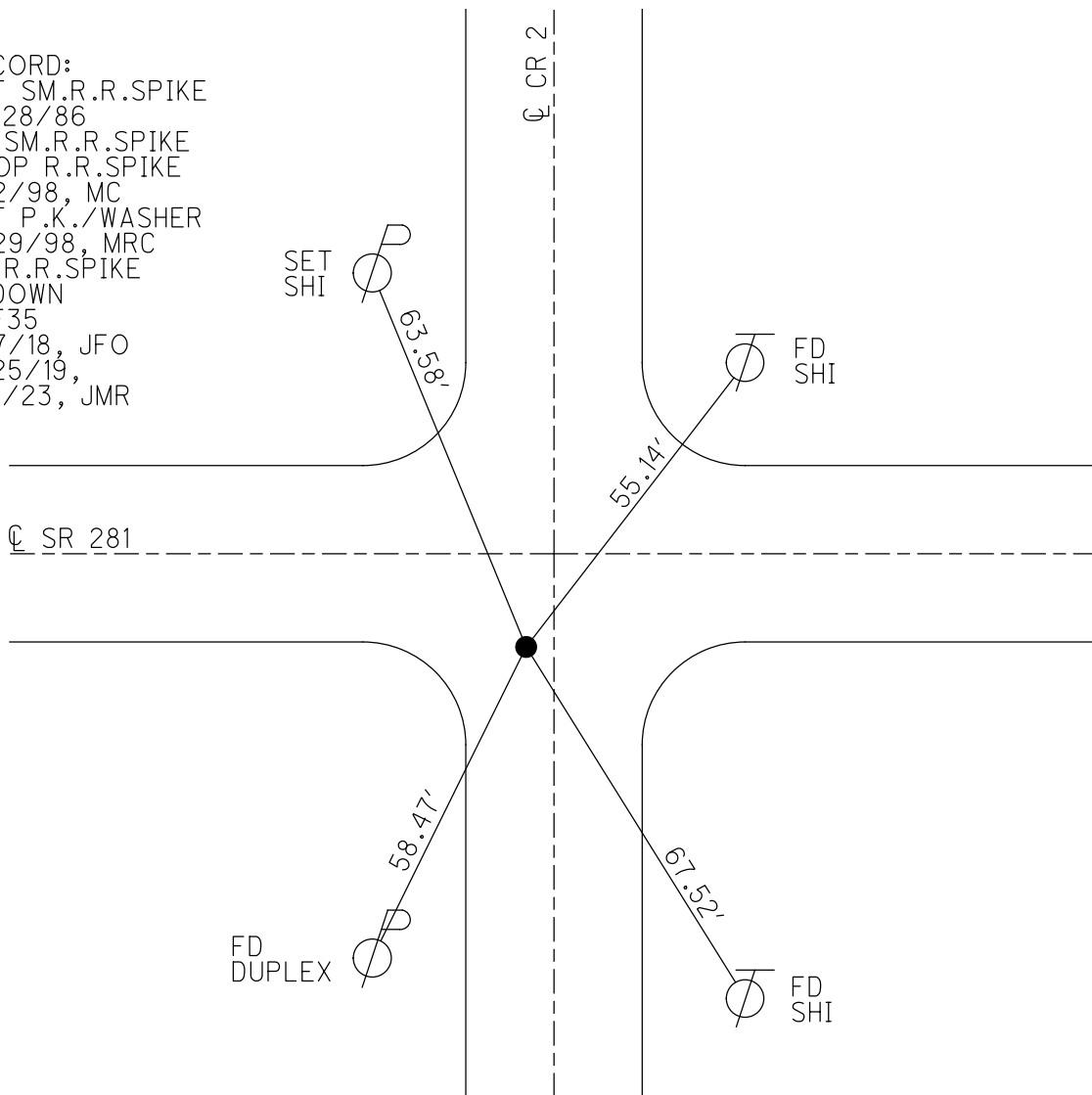
GEOID: 2012A

GRID: NORTHING: 592359.117

EASTING: 1583189.767



RECORD:
 SET SM.R.R.SPIKE
 10/28/86
 FD SM.R.R.SPIKE
 ATOP R.R.SPIKE
 6/2/98, MC
 SET P.K./WASHER
 9/29/98, MRC
 FD R.R.SPIKE
 1" DOWN
 REF35
 9/7/18, JFO
 7/25/19,
 1/11/23, JMR



O.D.O.T. DISTRICT 2 SURVEY OFFICE (USE ONLY)

PERSONNEL

REFERENCE NO. 35

SHEET 30 OF 34

NOTES RHOADES
 H.C. O'DONNELL
 R.C. RHOADES

DATE 9/7/18
 WEATHER CLOUDY
 TEMP. 69°

ROUTE SR 281
 COUNTY HENRY
 TOWNSHIP RICHFIELD
 SECTION 25
 T 4 N R 8 E

DWG BY NIESE PID CHIP_2

TYPE MONUMENT R.R.SPIKE

~~ON SURFACE~~ - BELOW 1"

OFFSET \odot PAVEMENT 10.0' ~~LT~~ : RT

ON TO RT EDGE PAVEMENT

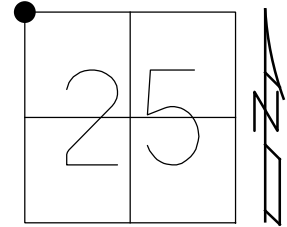
STATION: 899+27

HORIZ.DATUM: NAD83(2011)

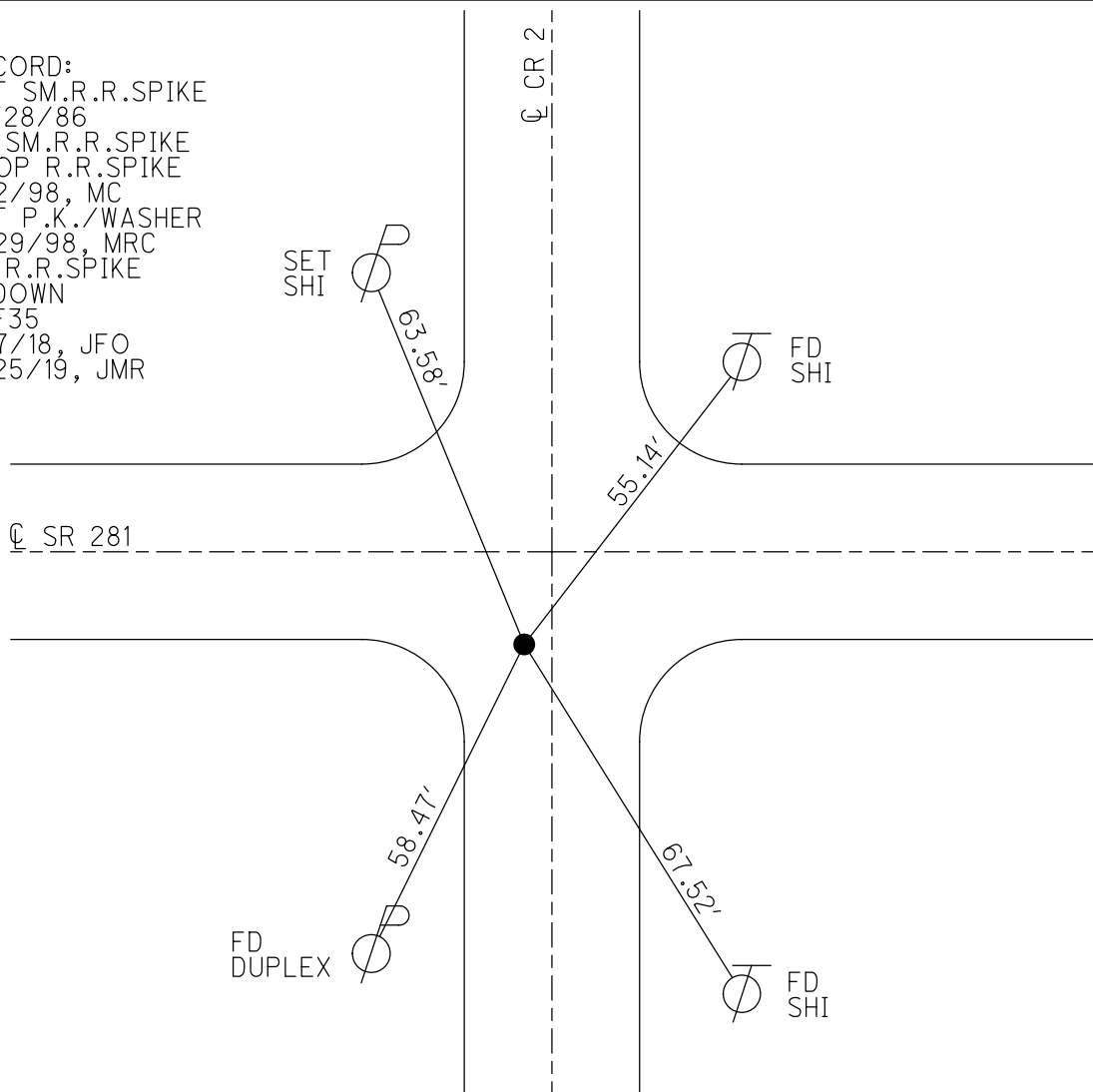
GEOID: 2012A

GRID: NORTHING: 592359.117

EASTING: 1583189.767



RECORD:
 SET SM.R.R.SPIKE
 10/28/86
 FD SM.R.R.SPIKE
 ATOP R.R.SPIKE
 6/2/98, MC
 SET P.K./WASHER
 9/29/98, MRC
 FD R.R.SPIKE
 1" DOWN
 REF35
 9/7/18, JFO
 7/25/19, JMR



O.D.O.T. DISTRICT 2 SURVEY OFFICE

PERSONNEL

REFERENCE NO. 35

SHEET 31 OF 34

NOTES Canterbury

H.C. Rousos

DATE 6-2-98

ROUTE SR 281

R.C. Nuffer

WEATHER SUNNY

COUNTY Henry

TEMP. +70°F

TOWNSHIP Richfield

SECTION 25

T 4 N R 8 E

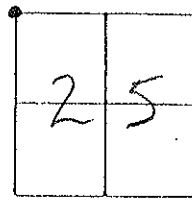
TYPE MONUMENT Sm. RR spike ATop RR spk

ON SURFACE - ~~BELOW~~ Surface

LEFT-CL PAV'T. - RIGHT 10.0 RT

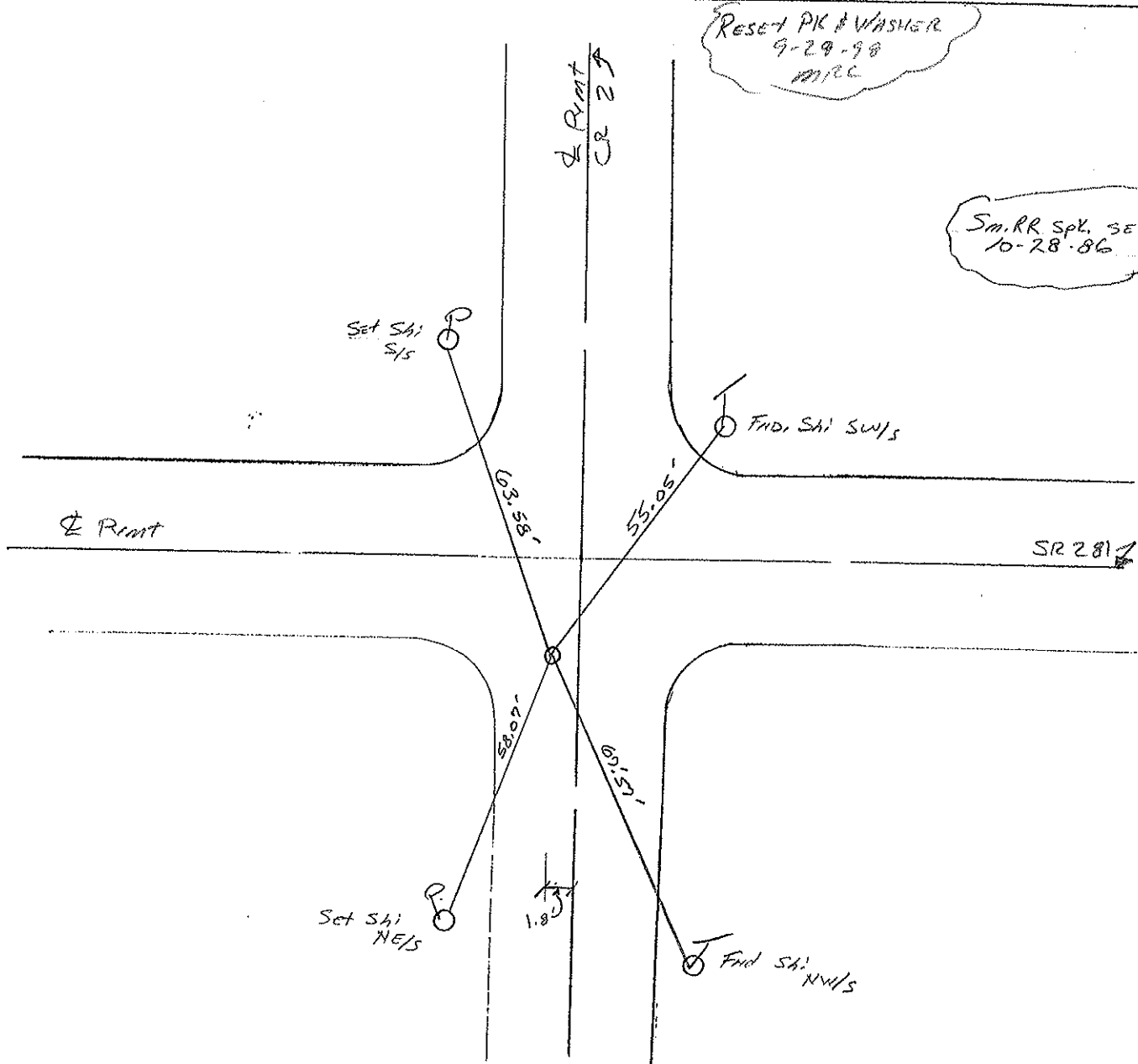
ON TO RT EDGE PAVEMENT

S.L.M. 27, 242.80 SLK (899, 27 SLK)



Reset PK & WASHER
9-29-98
MRC

Sm. RR SPL. SET
10-28-86



O.D.O.T. DISTRICT 2 SURVEY OFFICE

PERSONNEL _____

REFERENCE NO. 35

SHEET _____ OF _____

NOTES LOEHRKE

H.C. BARONISEL

R.C. SOCKMAN

DATE 8-11-86

WEATHER Pt Cloudy

TEMP. +65

ROUTE SR 281

COUNTY HENRY

TOWNSHIP RICHFIELD

SECTION 25

T4 N R 8 E

TYPE MONUMENT RR SPIKE

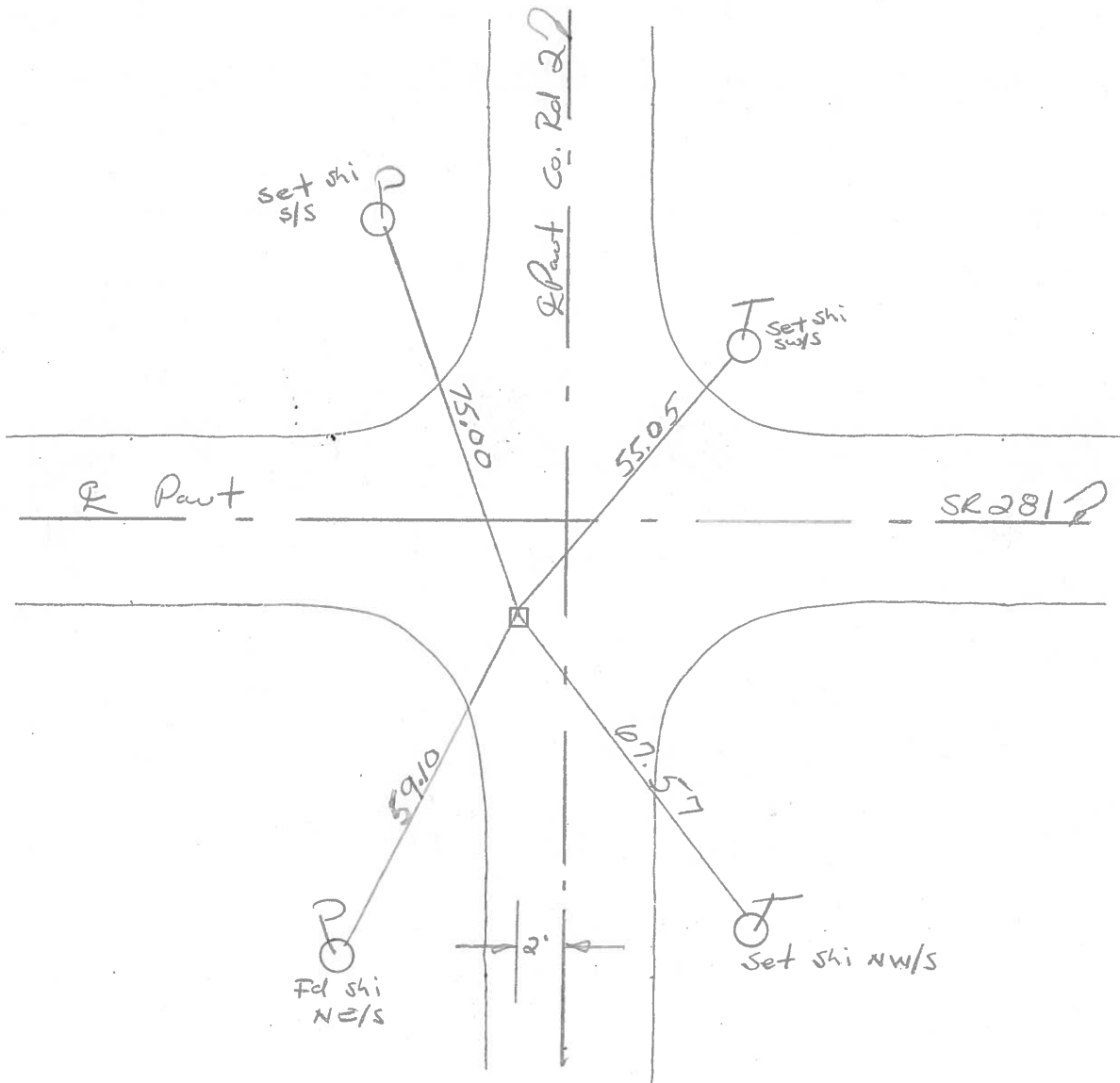
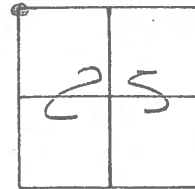
~~ON SURFACE~~ - BELOW 1/2"

~~LEFT - C PAV'T.~~ - RIGHT 10.0'

~~ON TO RT EDGE PAVEMENT~~

S.L.M. 894 +27

Set small
RR SPIKE
10-28-86



PERSONNEL	TITLE	PERSONNEL	TITLE
Tomsic			
Neuser			
Granata			

COUNTY HENRY DATE Nov 26, 1917
 S. R. 281 WEATHER _____
 SEC. RICHFIELD TWP. TEMP. _____

DESCRIPTION _____ LEFT _____ CENTER LINE _____ RIGHT _____ JOB NO. _____

