

O.D.O.T. DISTRICT 2 SURVEY OFFICE (USE ONLY)

PERSONNEL

REFERENCE NO. 36

SHEET 31 OF 34

NOTES RHOADES DATE 9/7/18

H.C. O'DONNELL WEATHER CLOUDY

R.C. RHOADES TEMP. 69°

ROUTE SR 281

COUNTY HENRY

TOWNSHIP RICHFIELD

SECTION 25

DWG BY NIESE PID PAVETRAIN

T 4 N R 8 E

TYPE MONUMENT SM.R.R.SPIKE

~~ON SURFACE~~ - BELOW 2"

OFFSET C PAVEMENT 10.6' ~~RT~~ : RT

0.6' TO RT EDGE PAVEMENT

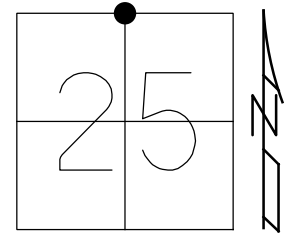
STATION: 920+83

HORZ.DATUM: NAD83(2011)

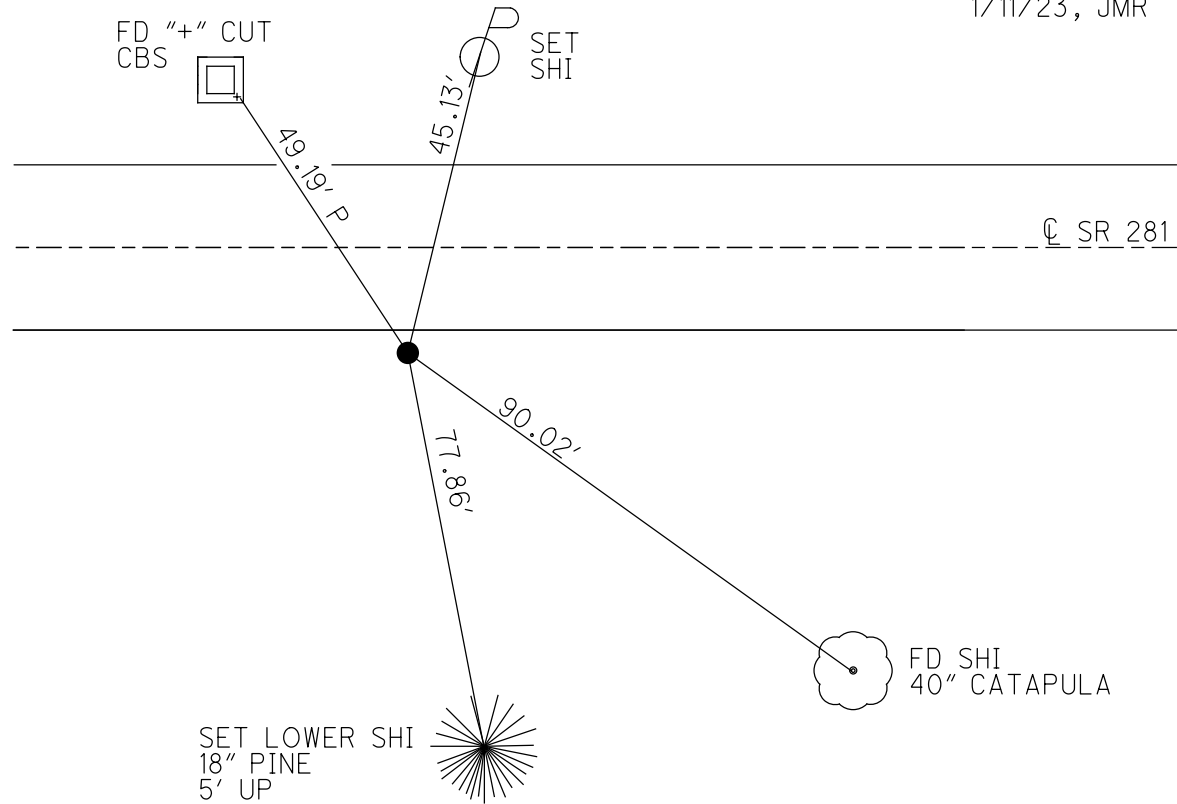
GEOID: 2012A

GRID: NORTHING: 592334.598

EASTING: 1585845.833



RECORD:
 FD SM.R.R.SPIKE
 ATOP R.R.SPIKE
 6/2/98, MC
 FD SM.R.R.SPIKE
 2" DOWN
 REF36
 9/7/18, JFO
 7/25/19,
 1/11/23, JMR



O.D.O.T. DISTRICT 2 SURVEY OFFICE (USE ONLY)

PERSONNEL

REFERENCE NO. 36

SHEET 31 OF 34

NOTES RHOADES

DATE 9/7/18

ROUTE SR 281

H.C. O'DONNELL

WEATHER CLOUDY

COUNTY HENRY

R.C. RHOADES

TEMP. 69°

TOWNSHIP RICHFIELD

SECTION 25

DWG BY NIESE

PID CHIP_2

T 4 N R 8 E

TYPE MONUMENT SM.R.R.SPIKE

~~ON SURFACE~~ - BELOW 2"

OFFSET \odot PAVEMENT 10.6' \perp : RT

0.6' TO RT EDGE PAVEMENT

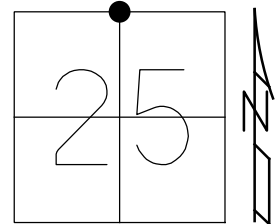
STATION: 920+83

HORZ.DATUM: NAD83(2011)

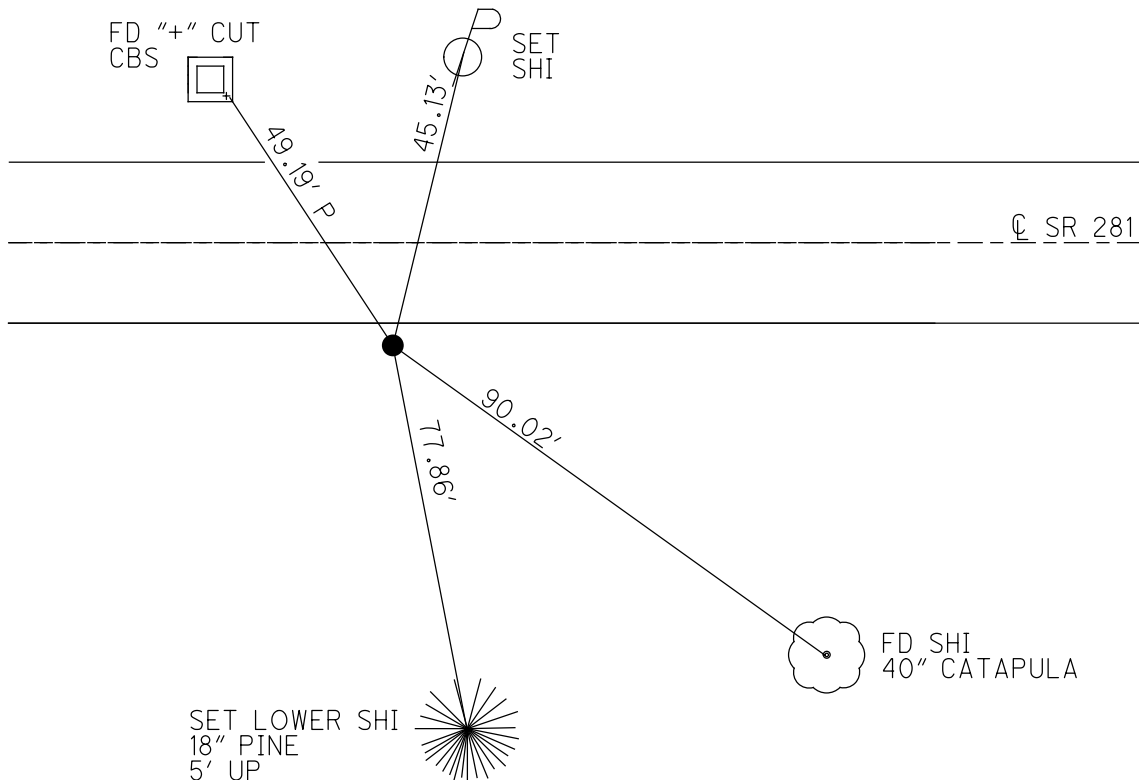
GEOID: 2012A

GRID: NORTHING: 592334.598

EASTING: 1585845.833



RECORD:
 FD SM.R.R.SPIKE
 ATOP R.R.SPIKE
 6/2/98, MC
 FD SM.R.R.SPIKE
 2" DOWN
 REF36
 9/7/18, JFO
 7/25/19, JMR



O.D.O.T. DISTRICT 2 SURVEY OFFICE

PERSONNEL _____

REFERENCE NO. 36

SHEET 32 OF 34

NOTES Canterbury

H.C. Roussor

R.C. Nuffor

DATE 6-2-98

WEATHER SUNNY

TEMP. +70°F

ROUTE SR 281

COUNTY HENRY

TOWNSHIP Richfield

SECTION 25

T. 4 NR. 8 E

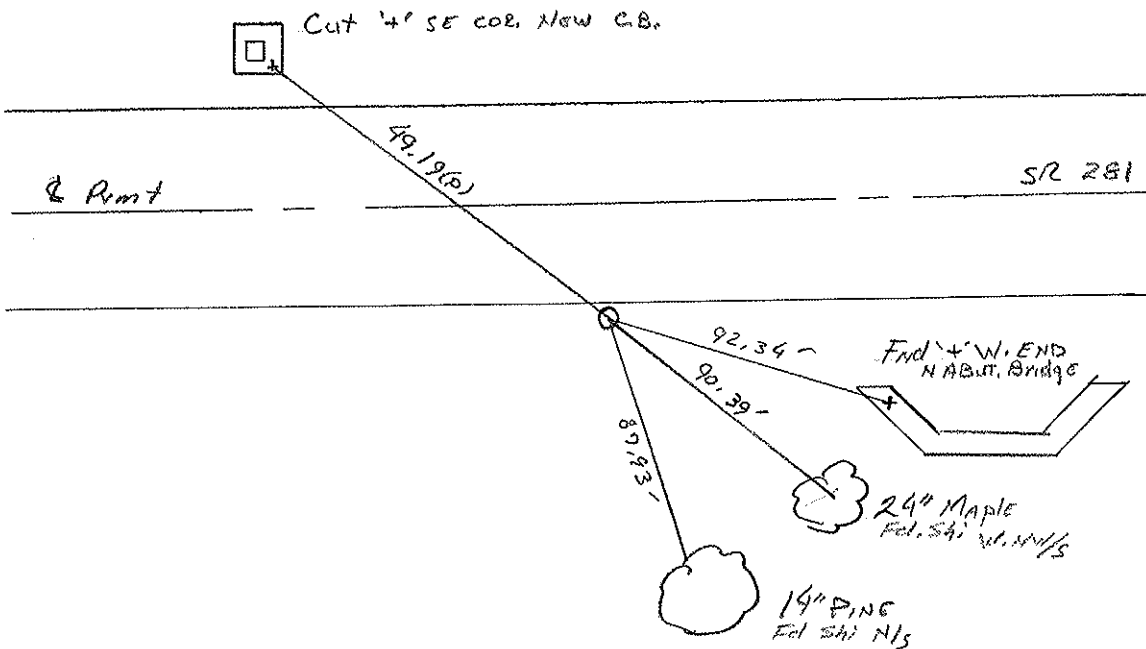
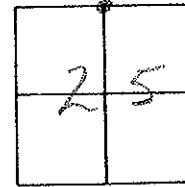
TYPE MONUMENT Sm RR Spk ATOP RR SPK

ON SURFACE - ~~BELOW~~ Surface

LEFT-~~C~~ PAV'T. - RIGHT 10.6' RT

0.6' TO RT EDGE PAVEMENT

S.L.M. 28+ 051.96 SLK (920183.5cm)



DRAWN BY TR

O.D.O.T. DISTRICT 2 SURVEY OFFICE

PERSONNEL

REFERENCE NO. 36

SHEET _____ OF _____

NOTES LOEHRKE

H.C. BARNHISEL

R.C. SOCKMAN

DATE 8-11-86

WEATHER Pt Cloudy

TEMP. +65

ROUTE SR 281

COUNTY HENRY

TOWNSHIP RICHFIELD

SECTION 25

T4 N R 8 E

TYPE MONUMENT R.R. SPIKE

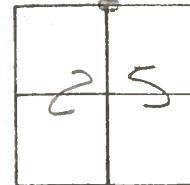
ON SURFACE - BELOW Yes

LEFT - C PAV'T. - RIGHT 10.4'

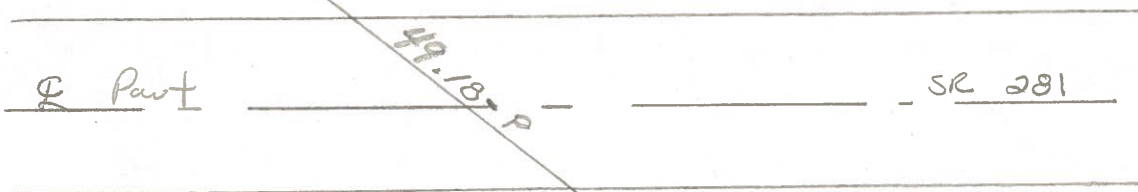
1.5' TO RT EDGE PAVEMENT

S.L.M. 920 + 83

Set small
R.R. spike
10-28-86



CUT "+" S.E. COR New C.B.



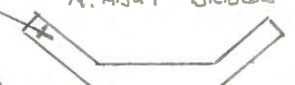
49.18 P

SR 281



92.36 - D
90.64

Fd "+" West END
N. ABUT BRIDGE



24" set Shi
WNW/S

87.91

Set Shi N/S
14" Pine

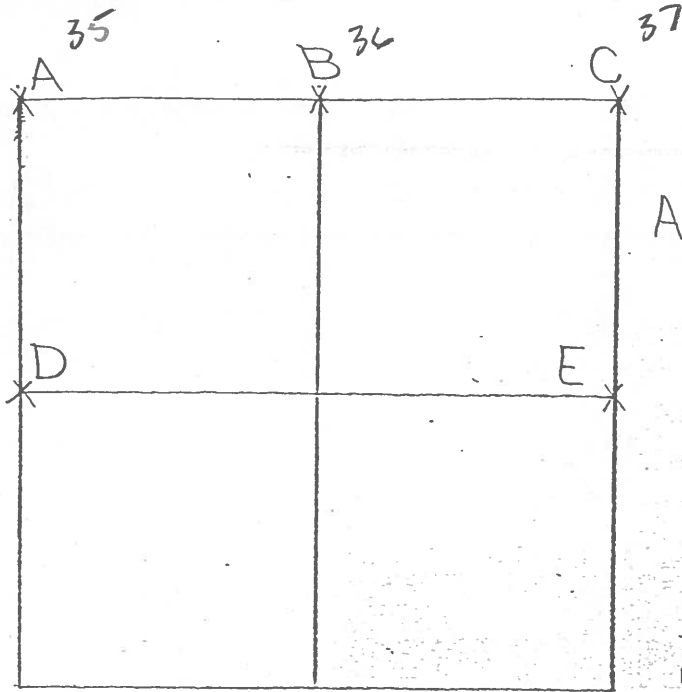


COUNTY HENRY

SHEET 1 OF 3
T-4-N, R-8-E

TOWNSHIP RICHFIELD

SECTION 25



8-7-79 R.W, J.J, C.S.

A - FOUND RECORDED BOAT SPIKE AND SQUARE SPIKE (8" LG.). NO STONE WAS FOUND. CORNER HAD BEEN ESTABLISHED FROM WITNESS TIES FOR S.H.# 591 IN O.D.O.T. OFFICE. REPLACED SQUARE SPIKE ON ROAD SURFACE. P.K.'S 6' N. & W. 74.73' N.N.W. TO SHINNER $\frac{S}{5}$ P

94.54' N.E. TO S.W. COR. HOUSE FOUNDATION

67.88' S.S.E. TO DUPLEX $\frac{W}{5}$ T

59.08' S.S.W. TO $\frac{NE}{5}$ P

10-25-79 R.W, J.J, C.S.

B - FOUND RECORDED R.R. SPIKE 0:37' SOUTH OF HIGH POINT OF TRUE STONE (5" x 7" x 17") 2-2" BELOW ROAD SURFACE. ALSO FOUND SMALLER STONE OVER TRUE STONE. REMOVED RAILROAD SPIKE AND SMALLER STONE. PLACED CENTER PUNCHED RAILROAD SPIKE ON SURFACE OVER HIGH POINT OF STONE.

P.K.'S 6' N.W. & N.E. STONE IS 0.8' SOUTH OF SOUTH EDGE OF 18' PAYMNT.

51.42' N.W. TO "+" N.E. COR. CATCH BASIN (PLUMBED)

51.58' N. TO NEAR FACE STEEL DEKALB SIGN POST.

92.37' E.S.E. TO "+" N.W. BRIDGE WING WALL

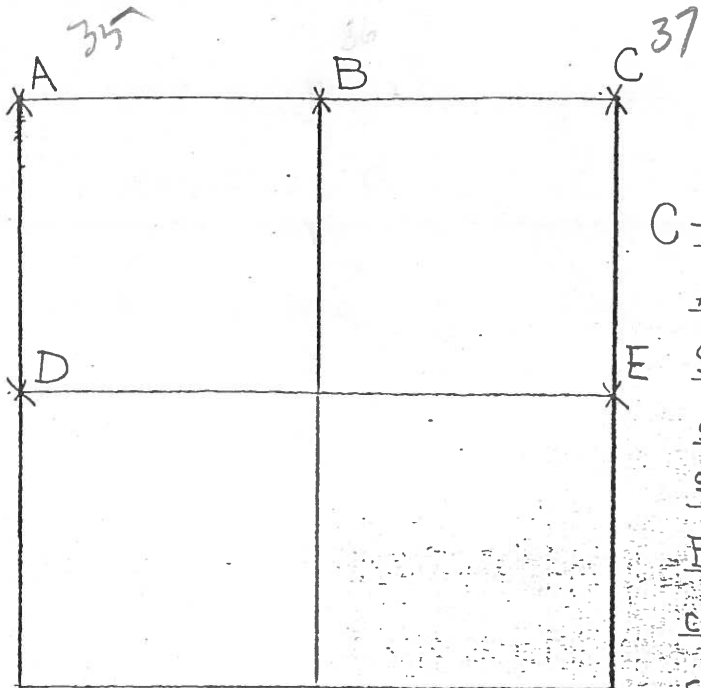
42.39' S.W. TO "+" TOP SOUTH END R.C.P. (PLUMBED)

COUNTY HENRY

SHEET 2 OF 3
T-4-N , R-8-E

TOWNSHIP RICHFIELD

SECTION 25



8-7-79 R.W, J.J, G.M.

C- FOUND RECORDED RAILROAD SPIKE
AND BOAT SPIKE 0.17' NORTH OF
STONE (8" x 10" x 20") 21" BELOW ROAD
SURFACE. ALSO FOUND WOOD STAKE
2/3 STONE. REMOVED RAILROAD SPIKE,
BOAT SPIKE & WOOD STAKE. PLACED
CENTER PUNCHED P.R. SPIKE ON
SURFACE OVER STONE. P.K.'s 6' N. & E.

STONE IS 0.80' SOUTH OF SOUTH EDGE OF PAVEMENT S.R. 281

78.35' N.W. TO SHINER $\frac{E}{S}$ I

70.67' N.N.E. TO "+" TOP EAST END STONE HEADWALL

26.65' E.S.E. TO DRILL HOLE NORTH END CONCRETE HEADWALL (PLUMBED)

61.18' S.S.W. TO DUPLEX P

52.80' N. TO N.W. CORNER; SEC. 30; MILTON TWP, WOOD CO.

10-22-79 R.W, J.J, C.S.

D- FOUND STONE (4" x 8" x 18") 19" BELOW ROAD SURFACE. PLACED
CENTER PUNCHED RAILROAD SPIKE ON SURFACE OVER TOP CENTER
OF STONE. P.K.'s 6' N. & E. STONE IS 5.4' EAST OF WEST EDGE OF
18' PAVEMENT & 6.0' SOUTH OF NORTH EDGE OF 14' PAVEMENT.

17.29' N.W. TO S.E. COR. NORTH BRIDGE RAIL

36.65' N.W. TO DUPLEX $\frac{S}{S}$ P

66.60' N.N.E. TO DUPLEX $\frac{W}{S}$ I

18.28' S.W. TO N.E. COR. SOUTH BRIDGE RAIL

86.40' W.S.W. TO DUPLEX $\frac{N}{S}$ 20" CATALPA