

O.D.O.T. DISTRICT 2 SURVEY OFFICE (USE ONLY)

PERSONNEL

REFERENCE NO. 37

SHEET 34 OF 34

NOTES RHOADES

DATE 9/7/18

ROUTE SR 281

H.C. O'DONNELL

WEATHER CLOUDY

COUNTY HENRY

R.C. RHOADES

TEMP. 69°

TOWNSHIP RICHFIELD

DWG BY NIESE PID CHIP\_2

SECTION 25

T 4 N R 8 E

TYPE MONUMENT MAG/WASHER

ON SURFACE - BELOW ON

OFFSET ☉ PAVEMENT - LT : RT

- TO - EDGE PAVEMENT

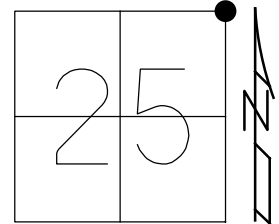
STATION: 947+59

HORZ.DATUM: NAD83(2011)

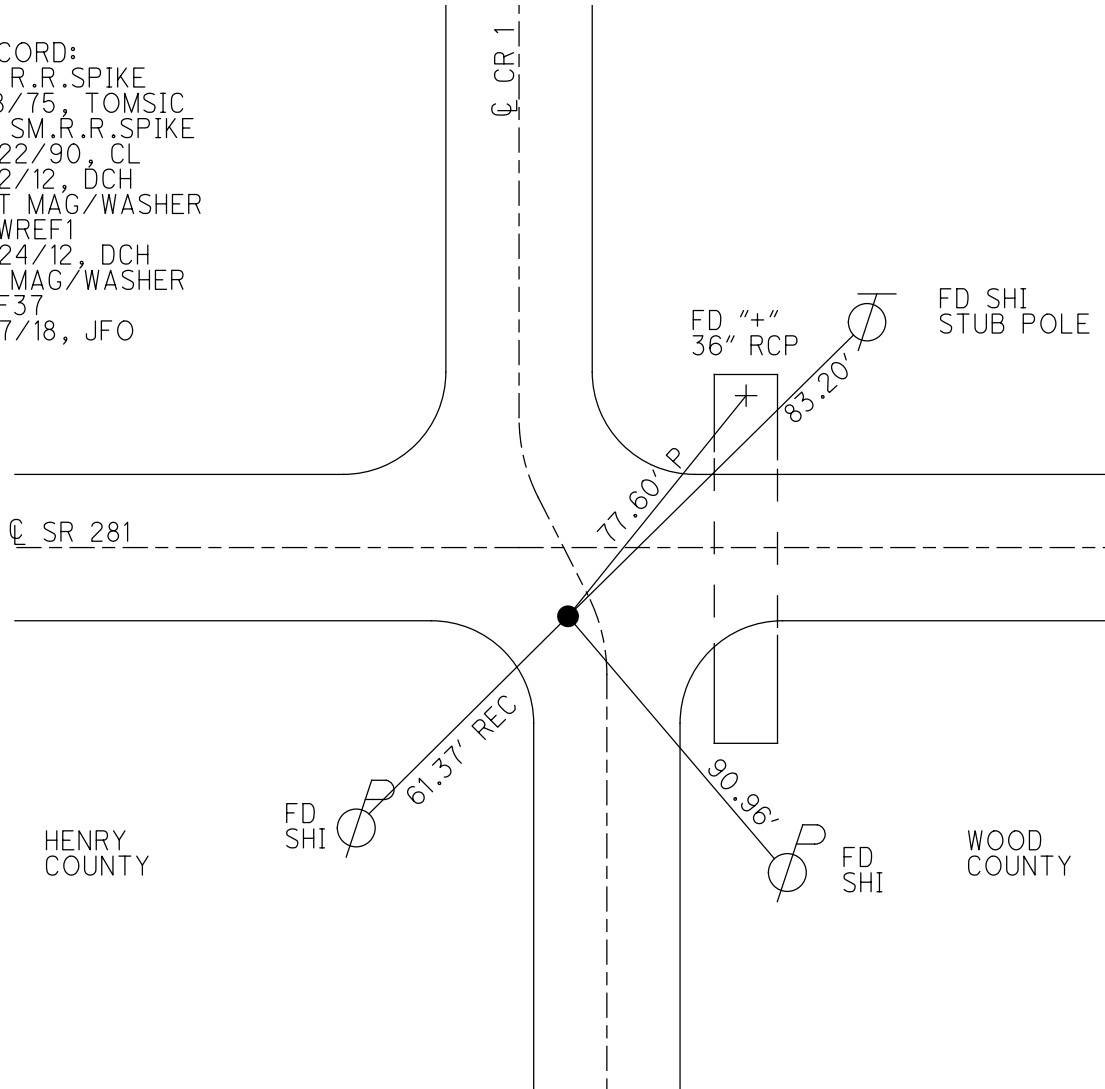
GEOID: 2012A

GRID: NORTHING: 592312.219

EASTING: 1588509.764



RECORD:  
 FD R.R.SPIKE  
 1/8/75, TOMSIC  
 FD SM.R.R.SPIKE  
 5/22/90, CL  
 7/2/12, DCH  
 SET MAG/WASHER  
 NEWREF1  
 9/24/12, DCH  
 FD MAG/WASHER  
 REF37  
 9/7/18, JFO



HENRY COUNTY

WOOD COUNTY

PERSONNEL	TITLE	PERSONNEL	TITLE
Tomsic			
Neuser			
Granata			

COUNTY HENRY DATE JAN. 8, 1975  
 S. R. 281 WEATHER \_\_\_\_\_  
 SEC. RICHFIELD TWP. TEMP. \_\_\_\_\_

DESCRIPTION \_\_\_\_\_ LEFT \_\_\_\_\_ CENTER LINE \_\_\_\_\_ RIGHT \_\_\_\_\_ JOB NO. \_\_\_\_\_

