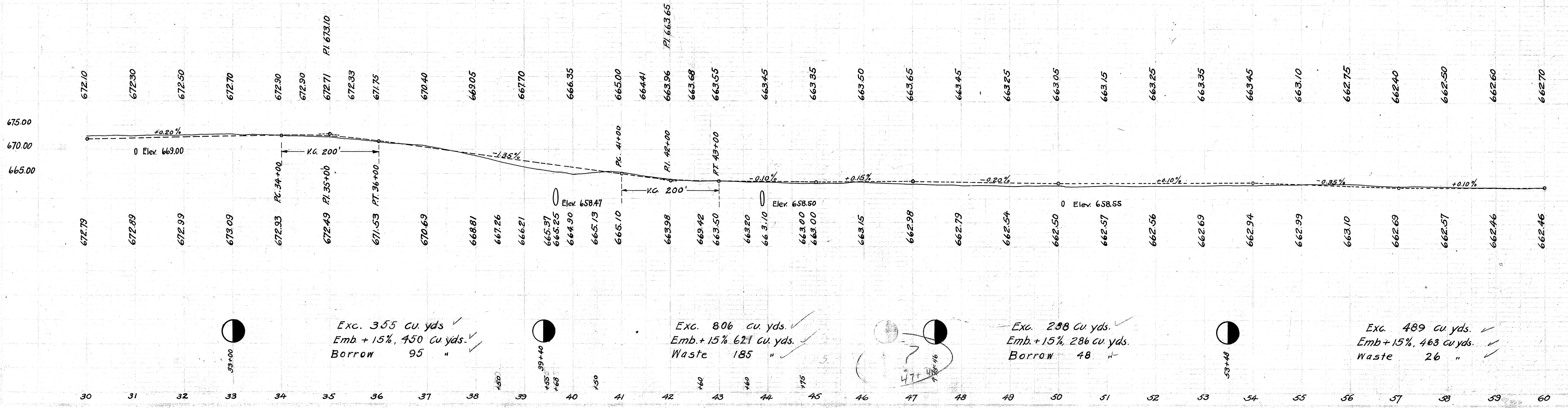


Left		Right	
Edge of Pavement	Width	Station	Grade Elev.
672.65	9.00	33+50	672.80
672.74	9.00	33+75	672.85
672.83	9.00	34+00	672.90
672.90	9.00	34+25	672.93
672.91	9.00	34+50	672.90
672.72	9.00	35+00	672.71
672.34	9.00	35+50	672.33
671.76	9.00	36+00	671.75
671.03	9.00	36+50	671.08
670.41	9.00	37+00	670.40
669.74	9.00	37+50	669.73
669.06	9.00	38+00	669.05
668.81	9.00	38+18.66	668.80
668.43	9.00	38+43.66	668.46
668.05	9.00	38+68.66	668.12
667.68	9.00	38+93.66	667.79
667.30	9.00	39+18.66	667.45

Left		Right	
Edge of Pavement	Width	Station	Grade Elev.
667.30	9.00	39+18.66	667.45
666.96	9.00	39+43.66	667.11
666.62	9.00	39+68.66	666.77
666.29	9.00	39+93.66	666.44
665.95	9.00	40+18.66	666.10
665.53	9.00	40+50	665.68
664.85	9.00	41+00	665.00
664.26	9.00	41+50	664.41
663.94	9.00	41+86.56	664.09
663.79	9.00	42+11.56	663.88
663.58	9.00	42+36.56	663.73
663.49	9.00	42+61.56	663.64
663.43	9.00	42+86.56	663.58

Left		Right	
Edge of Pavement	Width	Station	Grade Elev.
662.78	9.00	55+50	662.93
662.69	9.68	55+75	662.84
662.60	10.95	56+00	662.75
662.51	12.09	56+25	662.66
662.43	12.60	56+50	662.58
662.25	12.60	57+00	662.40
662.30	12.60	57+50	662.45
662.33	12.60	57+76.37	662.48
662.35	12.09	58+01.97	662.50
662.38	10.95	58+26.97	662.53
662.40	9.68	58+51.97	662.55
662.43	9.00	58+76.97	662.58

NOTE: Grade line shown is crown of finished pavement (Type "M&T")  
Grade line is lowered 0.30 ft for Type "C"  
For grading alone, grade line shown to be lowered .23 ft.



Exc. 355 cu. yds.  
Emb. + 15%, 450 cu. yds.  
Borrow 95 "

Exc. 806 cu. yds.  
Emb. + 15%, 621 cu. yds.  
Waste 185 "

Exc. 298 cu. yds.  
Emb. + 15%, 286 cu. yds.  
Borrow 48 "

Exc. 489 cu. yds.  
Emb. + 15%, 463 cu. yds.  
Waste 26 "



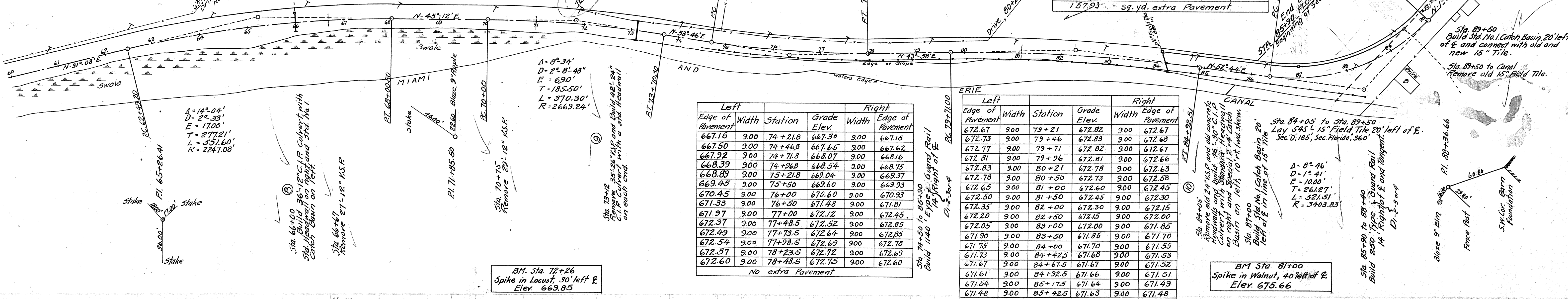
Left		Right			
Edge of Pavement	Width	Station	Grade Elev.	Width	Edge of Pavement
662.65	9.00	61+99.2	662.80	9.00	662.65
662.80	9.00	62+24.2	662.85	9.00	662.70
662.95	9.00	62+49.2	662.90	9.00	662.75
663.10	9.00	62+74.2	662.95	9.00	662.80
663.25	9.00	62+99.2	663.00	9.00	662.85
663.35	9.00	63+50	663.10	9.00	662.95
663.45	9.00	64+00	663.20	9.00	663.05
663.55	9.00	64+50	663.30	9.00	663.15
663.65	9.00	65+00	663.40	9.00	663.25
663.75	9.00	65+50	663.50	9.00	663.35
663.85	9.00	66+00	663.60	9.00	663.45
663.95	9.00	66+50	663.70	9.00	663.55
664.05	9.00	67+00	663.80	9.00	663.65
664.15	9.00	67+50	663.90	9.00	663.75
664.25	9.00	68+00	664.00	9.00	663.85
664.35	9.00	68+25.83	664.10	9.00	663.95
664.45	9.00	68+50.83	664.20	9.00	664.05
664.55	9.00	68+75.83	664.30	9.00	664.15
664.65	9.00	68+99.2	664.40	9.00	664.25
No extra Pavement					

Left		Right			
Edge of Pavement	Width	Station	Grade Elev.	Width	Edge of Pavement
664.65	9.00	69+50	664.80	9.00	664.65
664.84	9.00	69+75	664.90	9.00	664.75
665.03	9.00	70+00	665.00	9.00	664.85
665.22	9.00	70+25	665.10	9.00	664.95
665.41	9.00	70+50	665.20	9.00	665.05
665.61	9.00	71+00	665.40	9.00	665.25
665.81	9.00	71+50	665.60	9.00	665.45
666.01	9.00	72+00	665.80	9.00	665.65
666.21	9.00	72+50	666.00	9.00	665.85
666.41	9.00	73+00	666.20	9.00	666.05
666.61	9.00	73+20.3	666.30	9.00	666.15
666.81	9.00	73+45.3	666.46	9.00	666.31
667.01	9.00	73+70.3	666.68	9.00	666.53
667.21	9.00	73+95.3	666.94	9.00	666.79
667.41	9.00	74+20.3	667.27	9.00	667.12
No extra Pavement					

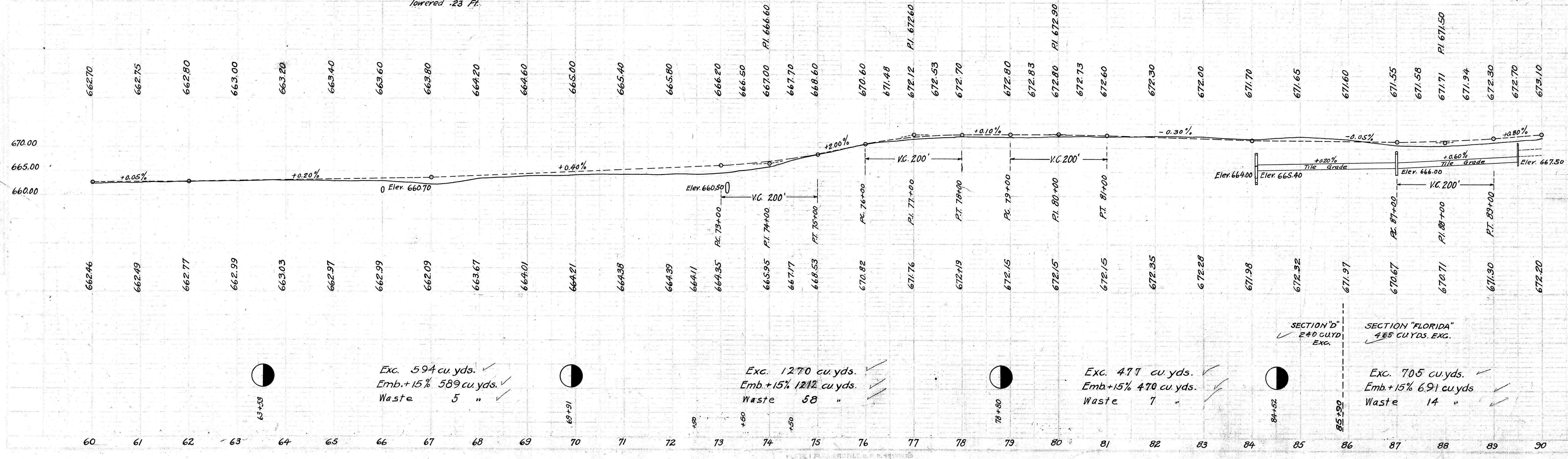
Left		Right			
Edge of Pavement	Width	Station	Grade Elev.	Width	Edge of Pavement
671.46	9.00	85+89.5	671.61	9.00	671.46
671.44	10.12	86+14.5	671.59	9.00	671.84
671.43	12.25	86+39.5	671.58	9.00	672.23
671.42	14.14	86+64.5	671.57	9.00	672.62
671.41	15.00	86+89.5	671.56	9.00	673.01
671.40	15.00	87+00	671.55	9.00	673.00
671.40	15.00	87+25	671.55	9.00	673.00
671.41	15.00	87+50	671.56	9.00	673.01
671.46	15.00	87+75	671.64	9.00	673.06
671.56	15.00	88+00	671.71	9.00	673.16
671.67	15.00	88+25	671.82	9.00	673.27
671.80	15.00	88+50	671.95	9.00	673.40
671.96	15.00	88+75	672.11	9.00	673.56
672.15	15.00	89+00	672.30	9.00	673.75
672.35	15.00	89+25	672.50	9.00	673.95
672.58	15.00	89+53.5	672.73	9.00	674.18
672.78	14.14	89+78.5	672.93	9.00	674.38
672.98	12.25	90+03.5	673.13	9.00	674.58
673.18	10.12	90+28.5	673.33	9.00	674.78
673.38	9.00	90+53.5	673.53	9.00	674.98
157.93' Sq. Yd. extra Pavement					

Left		Right			
Edge of Pavement	Width	Station	Grade Elev.	Width	Edge of Pavement
667.15	9.00	74+21.8	667.30	9.00	667.15
667.50	9.00	74+46.8	667.65	9.00	667.62
667.92	9.00	74+71.8	668.07	9.00	668.16
668.39	9.00	74+96.8	668.54	9.00	668.75
668.89	9.00	75+21.8	669.04	9.00	669.37
669.45	9.00	75+50	669.60	9.00	669.93
670.45	9.00	76+00	670.60	9.00	670.93
671.33	9.00	76+50	671.48	9.00	671.81
671.97	9.00	77+00	672.12	9.00	672.45
672.37	9.00	77+48.5	672.52	9.00	672.85
672.49	9.00	77+73.5	672.64	9.00	672.85
672.54	9.00	77+98.5	672.69	9.00	672.78
672.57	9.00	78+23.5	672.72	9.00	672.69
672.60	9.00	78+48.5	672.75	9.00	672.60
No extra Pavement					

Left		Right			
Edge of Pavement	Width	Station	Grade Elev.	Width	Edge of Pavement
672.67	9.00	79+21	672.82	9.00	672.67
672.73	9.00	79+46	672.83	9.00	672.68
672.77	9.00	79+71	672.82	9.00	672.67
672.81	9.00	79+96	672.81	9.00	672.66
672.83	9.00	80+21	672.78	9.00	672.63
672.78	9.00	80+50	672.73	9.00	672.58
672.65	9.00	81+00	672.60	9.00	672.45
672.50	9.00	81+50	672.45	9.00	672.30
672.35	9.00	82+00	672.30	9.00	672.15
672.20	9.00	82+50	672.15	9.00	672.00
672.05	9.00	83+00	672.00	9.00	671.85
671.90	9.00	83+50	671.85	9.00	671.70
671.75	9.00	84+00	671.70	9.00	671.55
671.73	9.00	84+25	671.68	9.00	671.53
671.67	9.00	84+50	671.67	9.00	671.52
671.61	9.00	84+75	671.66	9.00	671.51
671.54	9.00	85+00	671.64	9.00	671.49
671.48	9.00	85+25	671.63	9.00	671.48
No extra Pavement					



NOTE: Grade Line shown is crown of finished pavement, Type "M(S)"  
Grade line is lowered .03 Ft. for Type "C"  
For grading alone, grade line shown to be lowered .23 Ft.



Exc. 594 cu. yds.  
Emb.+15% 589 cu. yds.  
Waste 5 "

Exc. 1270 cu. yds.  
Emb.+15% 1212 cu. yds.  
Waste 58 "

Exc. 477 cu. yds.  
Emb.+15% 470 cu. yds.  
Waste 7 "

Exc. 705 cu. yds.  
Emb.+15% 691 cu. yds.  
Waste 14 "

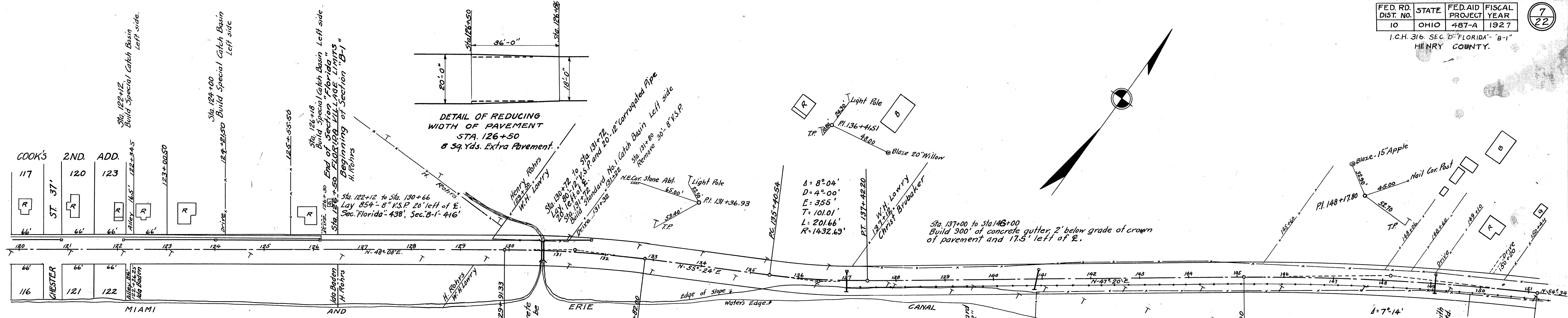
SECTION "D"  
240 CU.YD. EXC.

SECTION "FLORIDA"  
485 CU.YDS. EXC.









Left		Right	
Edge of Pavement	Width	Station	Grade Elev.
667.00	9.00	129+41.33	667.15
666.94	9.00	129+66.33	667.00
666.88	9.00	129+91.33	666.85
666.82	9.00	130+16.33	666.70
666.76	9.00	130+41.33	666.55
666.71	9.00	130+50	666.40
666.41	9.00	131+00	666.35
666.11	9.00	131+50	666.20
665.81	9.00	132+00	666.05
665.63	9.00	132+32	665.90
665.43	9.00	132+57	665.75
665.24	9.00	132+82	665.60
665.07	9.00	133+07	665.45
664.92	9.00	133+32	665.30
No extra pavement			

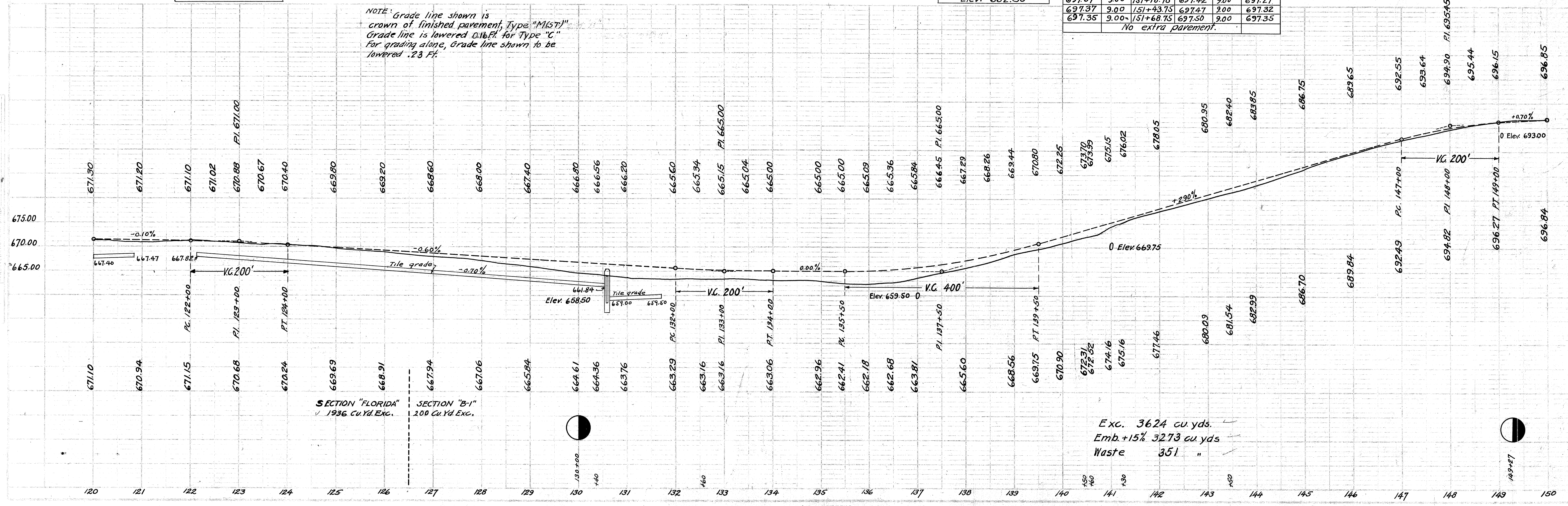
Left		Right	
Edge of Pavement	Width	Station	Grade Elev.
664.85	9.00	134+90.54	665.00
664.85	9.00	135+15.54	665.00
664.85	9.00	135+40.54	665.00
664.85	9.00	135+65.54	665.00
664.90	9.00	135+90.54	665.05
664.94	9.00	136+00	665.09
665.21	9.00	136+50	665.36
665.58	9.00	136+92.2	665.73
665.85	9.00	137+17.2	666.00
666.19	9.00	137+42.2	666.34
666.56	9.00	137+67.2	666.71
666.97	9.00	137+92.2	667.12
No extra pavement			

Left		Right	
Edge of Pavement	Width	Station	Grade Elev.
685.61	9.00	144+66	685.76
686.34	9.00	144+91	686.49
687.16	9.00	145+16	687.21
687.94	9.00	145+41	687.94
688.71	9.00	145+66	688.66
689.70	9.00	146+00	689.65
691.15	9.00	146+50	691.10
692.60	9.00	147+00	692.55
693.69	9.00	147+50	693.64
694.95	9.00	148+00	694.90
695.49	9.00	148+50	695.44
696.20	9.00	149+00	696.15
696.55	9.00	149+50	696.50
696.90	9.00	150+00	696.85
697.20	9.00	150+50	697.15
697.29	9.00	150+68.75	697.24
697.33	9.00	150+93.75	697.33
697.87	9.00	151+18.75	697.42
697.37	9.00	151+43.75	697.47
697.35	9.00	151+68.75	697.50
No extra pavement.			

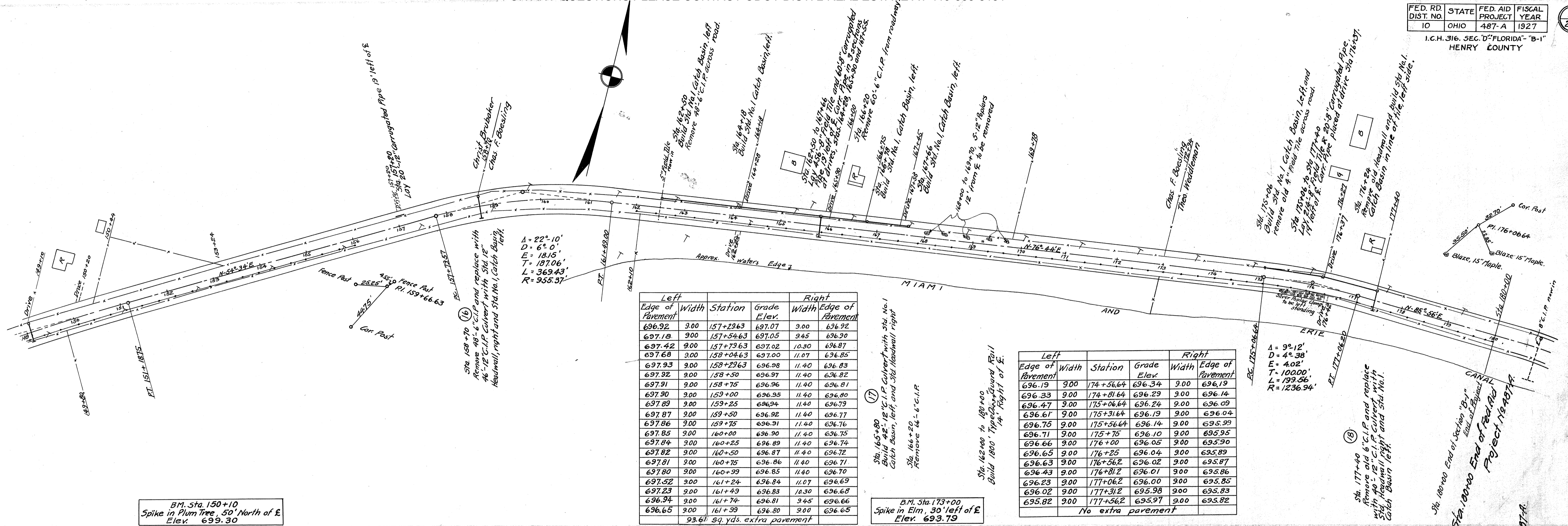
B.M. Sta. 121+97  
Spike in maple, 24' left of E.  
Elev. 672.19

B.M. Sta. 136+85  
Spike in willow 20' Right of E.  
Elev. 662.50

NOTE: Grade line shown is crown of finished pavement, Type "MST".  
Grade line is lowered 0.16 Ft. for Type "C" for grading alone, grade line shown to be lowered .23 Ft.







Left Edge of Pavement	Width	Station	Grade Elev.	Right Edge of Pavement	
696.92	9.00	157+29.63	697.07	9.00	696.92
697.18	9.00	157+54.63	697.05	9.45	696.90
697.42	9.00	157+79.63	697.02	10.30	696.87
697.68	9.00	158+04.63	697.00	11.07	696.85
697.93	9.00	158+29.63	696.98	11.40	696.83
697.92	9.00	158+50	696.97	11.40	696.82
697.91	9.00	158+75	696.96	11.40	696.81
697.90	9.00	159+00	696.95	11.40	696.80
697.89	9.00	159+25	696.94	11.40	696.79
697.87	9.00	159+50	696.92	11.40	696.77
697.86	9.00	159+75	696.91	11.40	696.76
697.85	9.00	160+00	696.90	11.40	696.75
697.84	9.00	160+25	696.89	11.40	696.74
697.82	9.00	160+50	696.87	11.40	696.72
697.81	9.00	160+75	696.86	11.40	696.71
697.80	9.00	160+99	696.85	11.40	696.70
697.52	9.00	161+24	696.84	11.07	696.69
697.23	9.00	161+49	696.83	10.30	696.68
696.94	9.00	161+74	696.81	9.45	696.66
696.65	9.00	161+99	696.80	9.00	696.65
93.61 sq. yds. extra pavement					

Left Edge of Pavement	Width	Station	Grade Elev.	Right Edge of Pavement	
696.19	9.00	174+56.64	696.34	9.00	696.19
696.33	9.00	174+81.64	696.29	9.00	696.14
696.47	9.00	175+06.64	696.24	9.00	696.09
696.61	9.00	175+31.64	696.19	9.00	696.04
696.75	9.00	175+56.64	696.14	9.00	695.99
696.71	9.00	175+75	696.10	9.00	695.95
696.66	9.00	176+00	696.05	9.00	695.90
696.65	9.00	176+25	696.04	9.00	695.89
696.63	9.00	176+56.2	696.02	9.00	695.87
696.43	9.00	176+81.2	696.01	9.00	695.86
696.23	9.00	177+06.2	696.00	9.00	695.85
696.02	9.00	177+31.2	695.98	9.00	695.83
695.82	9.00	177+56.2	695.97	9.00	695.82
No extra pavement					

BM. Sta. 150+10  
Spike in Plum Tree, 50' North of E  
Elev. 699.30

BM. Sta. 173+00  
Spike in Elm, 30' left of E  
Elev. 693.79

NOTE: grade line shown is crown of finished pavement, Type M(ST).  
Grade line is lowered 0.16 Ft. for Type "C" for grading along. Grade line shown to be lowered .23 Ft.

