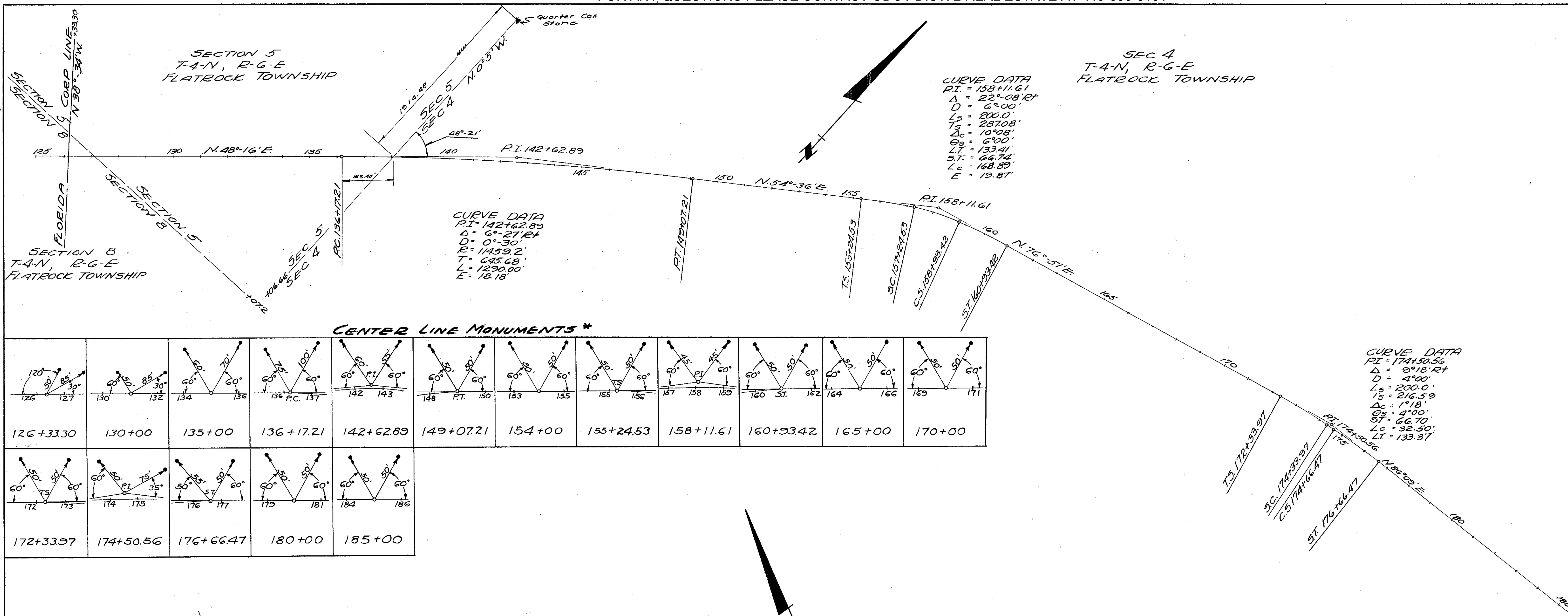
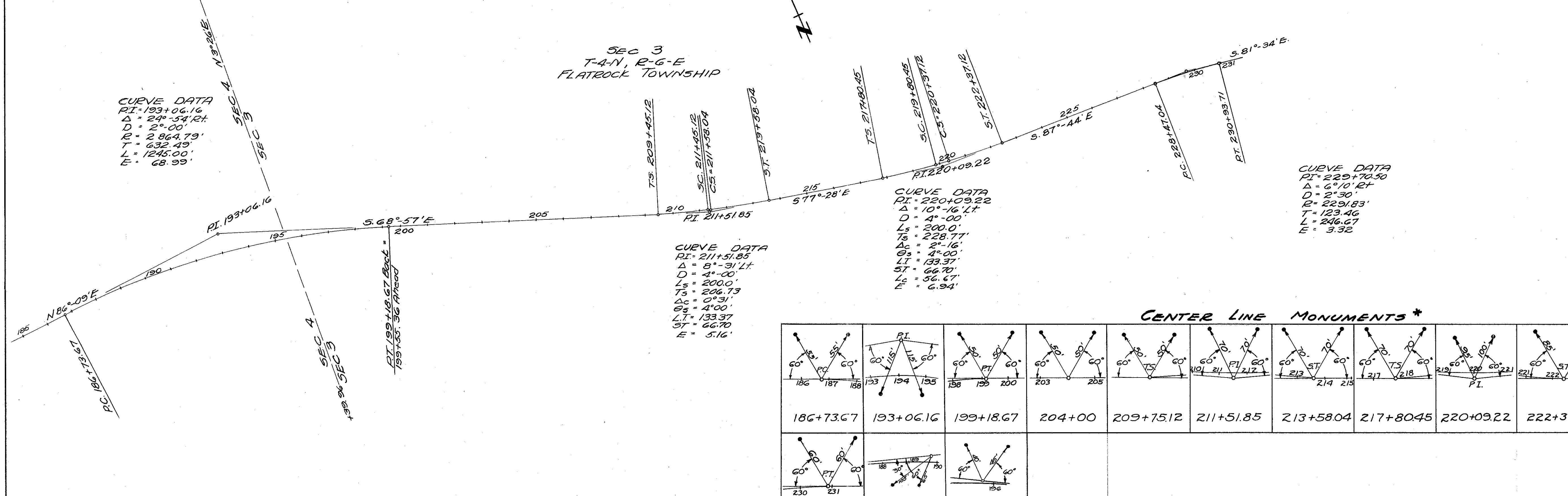


Scanned June 1997



CENTER LINE MONUMENTS *

126+33.30	130+00	135+00	136+17.21	142+62.89	149+07.21	154+00	155+24.53	158+11.61	160+93.42	165+00	170+00
172+33.97	174+50.56	176+66.47	180+00	185+00							

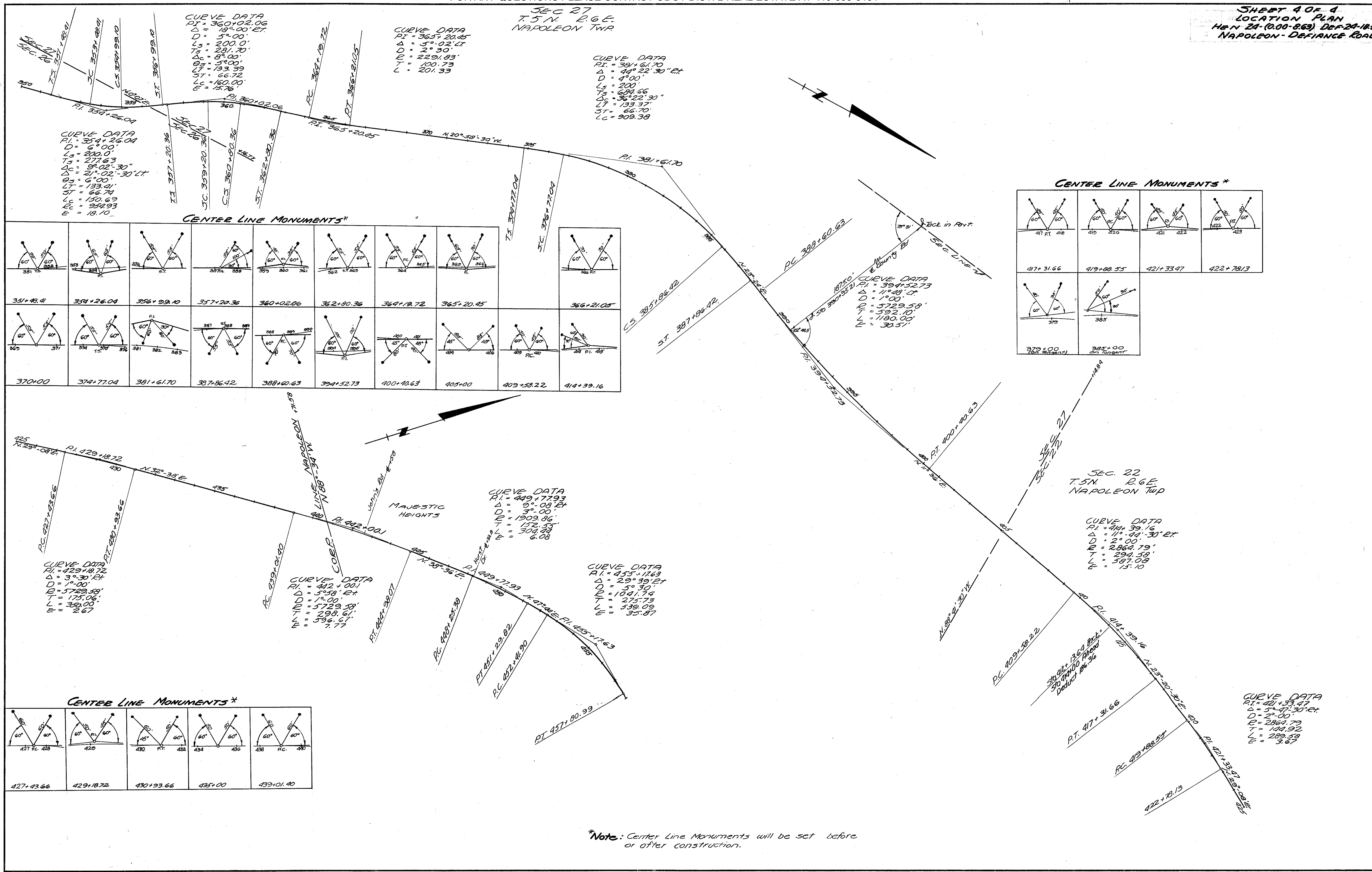


CENTER LINE MONUMENTS *

186+73.67	193+06.16	199+18.67	204+00	209+75.12	211+51.85	213+58.04	217+80.45	220+09.22	222+37.12	227+00	228+47.04	229+70.50		
230+93.71	190+00 (On Tangent)	196+00 (On Tangent)												

*Note: Center Line Monuments will be set before or after construction.

Scanned
June 1997



CURVE DATA
 PI = 360+02.06
 $\Delta = 18^{\circ}00'ET$
 $D = 5^{\circ}00'$
 $L_s = 200.0'$
 $T_s = 281.70'$
 $\Delta_c = 8^{\circ}00'$
 $L_c = 133.39'$
 $ST = 66.72'$
 $LC = 160.00'$
 $E = 15.76'$

CURVE DATA
 PI = 365+20.45
 $\Delta = 5^{\circ}02'LT$
 $D = 2^{\circ}30'$
 $L_s = 229.83'$
 $T_s = 400.73'$
 $L = 201.33'$

CURVE DATA
 PI = 381+61.70
 $\Delta = 44^{\circ}22'30"ET$
 $D = 4^{\circ}00'$
 $L_s = 200'$
 $T_s = 639.66'$
 $\Delta_c = 36^{\circ}22'30"$
 $L_c = 133.37'$
 $ST = 66.70'$
 $LC = 909.38'$

CURVE DATA
 PI = 354+26.04
 $D = 6^{\circ}00'$
 $L_s = 200.0'$
 $T_s = 271.63'$
 $\Delta_c = 21^{\circ}02'30"LT$
 $\Delta = 8^{\circ}00'$
 $L_c = 133.41'$
 $ST = 66.74'$
 $LC = 150.69'$
 $E = 254.93'$
 $E = 18.10'$

CENTER LINE MONUMENTS*

351+43.4	354+26.04	356+99.10	357+20.36	360+02.06	362+80.36	364+19.72	365+20.45	366+21.05
370+00	374+77.04	381+61.70	387+86.42	388+02.63	394+52.73	400+40.63	405+00	409+58.22
414+39.16	417+31.66	419+88.55	421+33.47	422+78.13	423+00	427+80.99	429+18.72	430+93.66

CENTER LINE MONUMENTS*

417+31.66	419+88.55	421+33.47	422+78.13	
379+00	385+00			

CURVE DATA
 PI = 394+52.73
 $\Delta = 11^{\circ}08'LT$
 $D = 1^{\circ}00'$
 $R = 5729.58'$
 $T = 1180.00'$
 $L = 30.51'$

CURVE DATA
 PI = 449+77.93
 $\Delta = 5^{\circ}08'ET$
 $D = 3^{\circ}00'$
 $L_s = 1909.86'$
 $T_s = 152.33'$
 $L = 304.34'$
 $E = 6.08'$

CURVE DATA
 PI = 455+11.63
 $\Delta = 29^{\circ}39'ET$
 $D = 5^{\circ}30'$
 $L_s = 1041.74'$
 $T_s = 275.73'$
 $L = 35.87'$

CURVE DATA
 PI = 442+00.1
 $D = 5^{\circ}58'ET$
 $D = 1^{\circ}00'$
 $R = 5729.58'$
 $T = 298.61'$
 $L = 596.61'$
 $E = 7.77'$

SEC. 22
T.5N. R.6E.
NAPOLEON TWP

CURVE DATA
 PI = 444+39.16
 $\Delta = 11^{\circ}08'30"ET$
 $D = 2^{\circ}00'$
 $R = 2864.79'$
 $T = 294.58'$
 $L = 587.08'$
 $E = 15.10'$

CENTER LINE MONUMENTS*

427+43.66	429+18.72	430+93.66	434+00	435+00	439+01.40

CURVE DATA
 PI = 421+33.47
 $\Delta = 5^{\circ}47'30"ET$
 $D = 2^{\circ}00'$
 $R = 2864.79'$
 $T = 144.92'$
 $L = 289.58'$
 $E = 3.67'$

*Note: Center Line Monuments will be set before or after construction.

Scanned
June 1997

HENRY COUNTY
HEN-24-0.00-
D/W PLANS

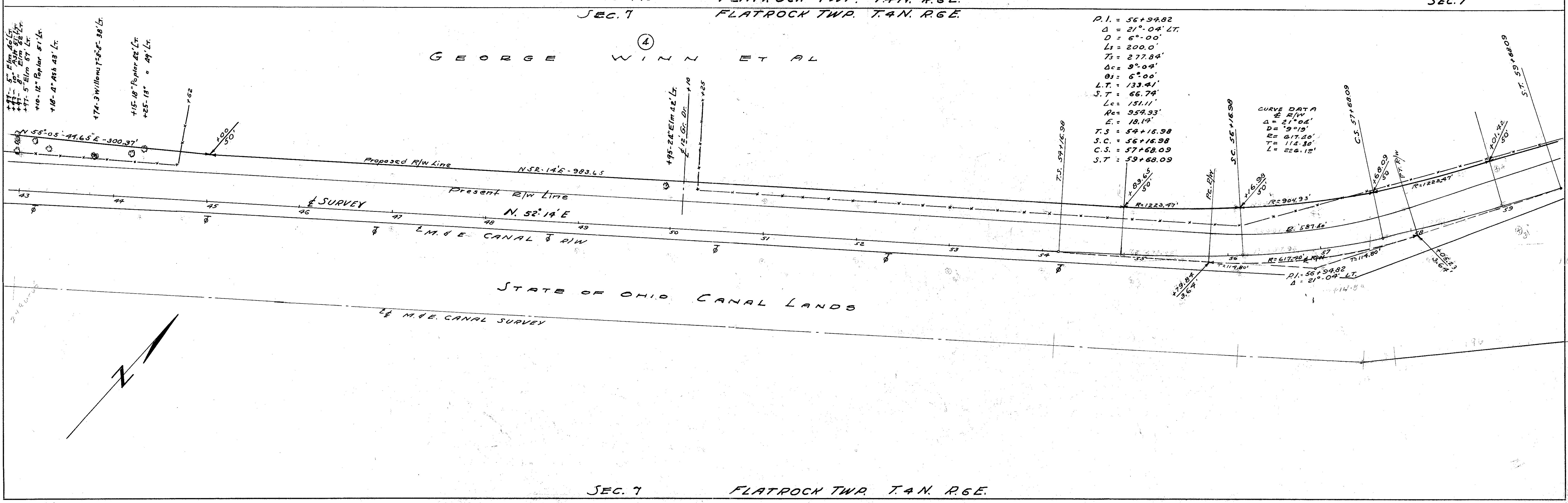
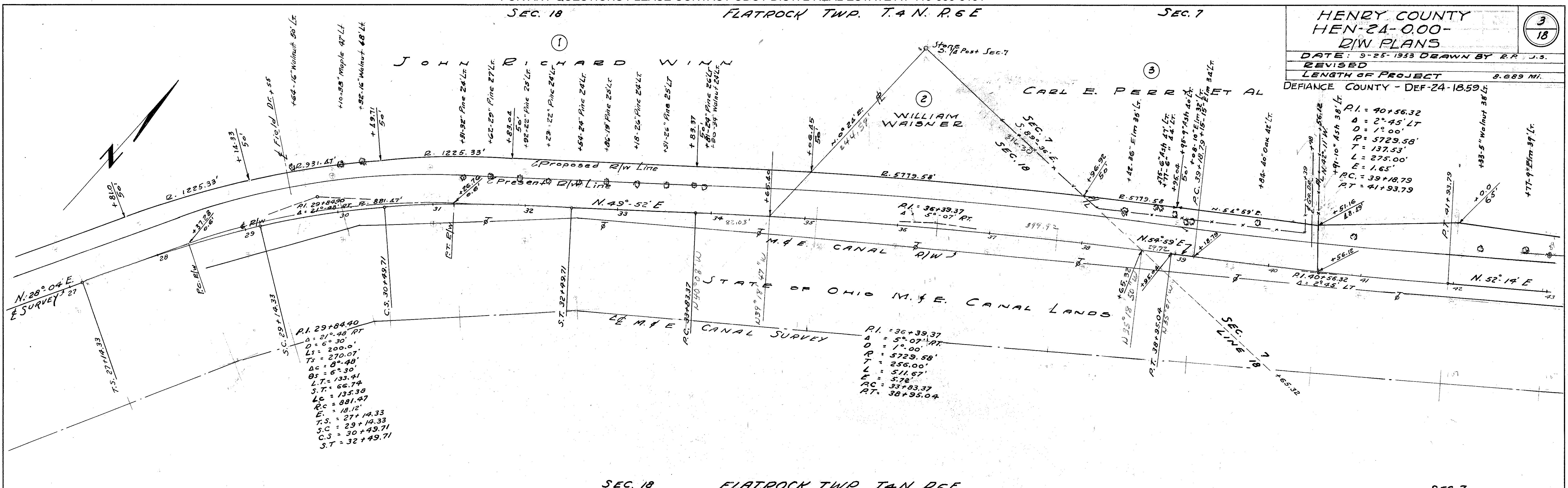
DATE: 5-25-1953 DRAWN BY R.R. J.S.

REVISED

LENGTH OF PROJECT 8.689 MI.

DEFIANCE COUNTY - DEF-24-1859

3
18

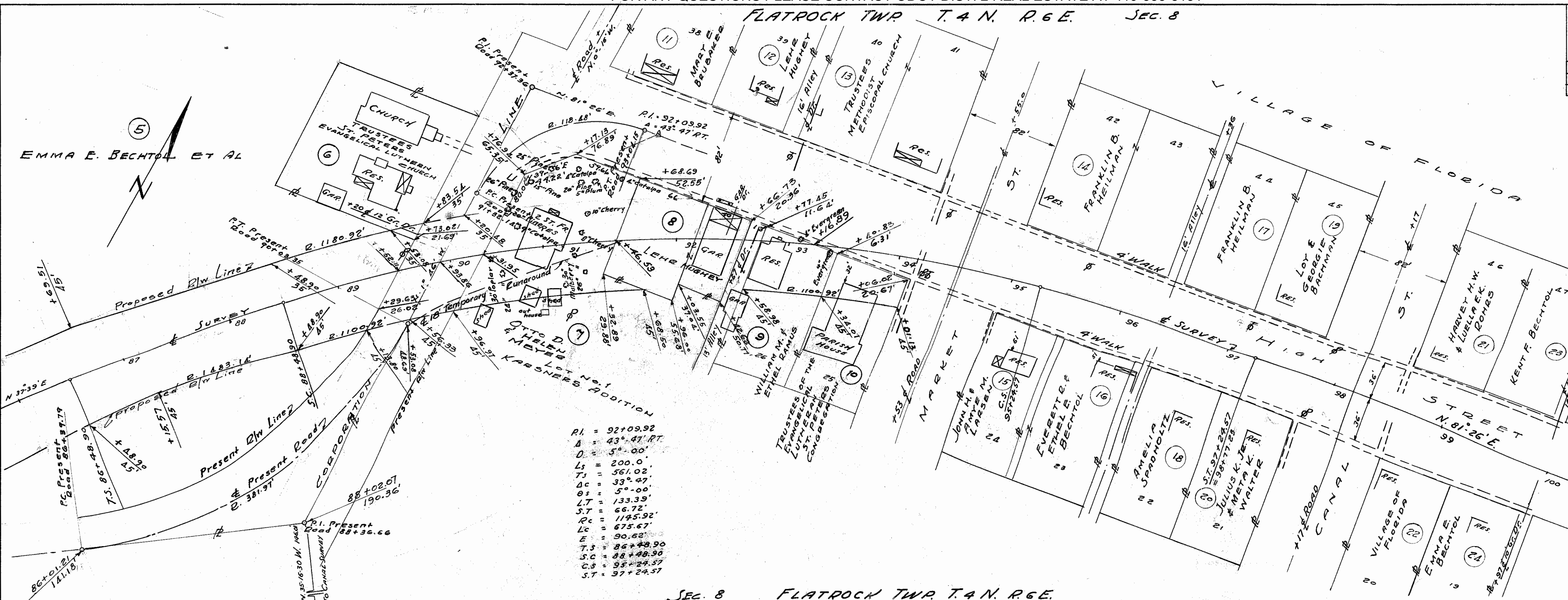


FLATROCK TWP T. 4 N. R. 6 E. SEC. 8

HENRY COUNTY
HEN. 24-000-
R/W PLANS

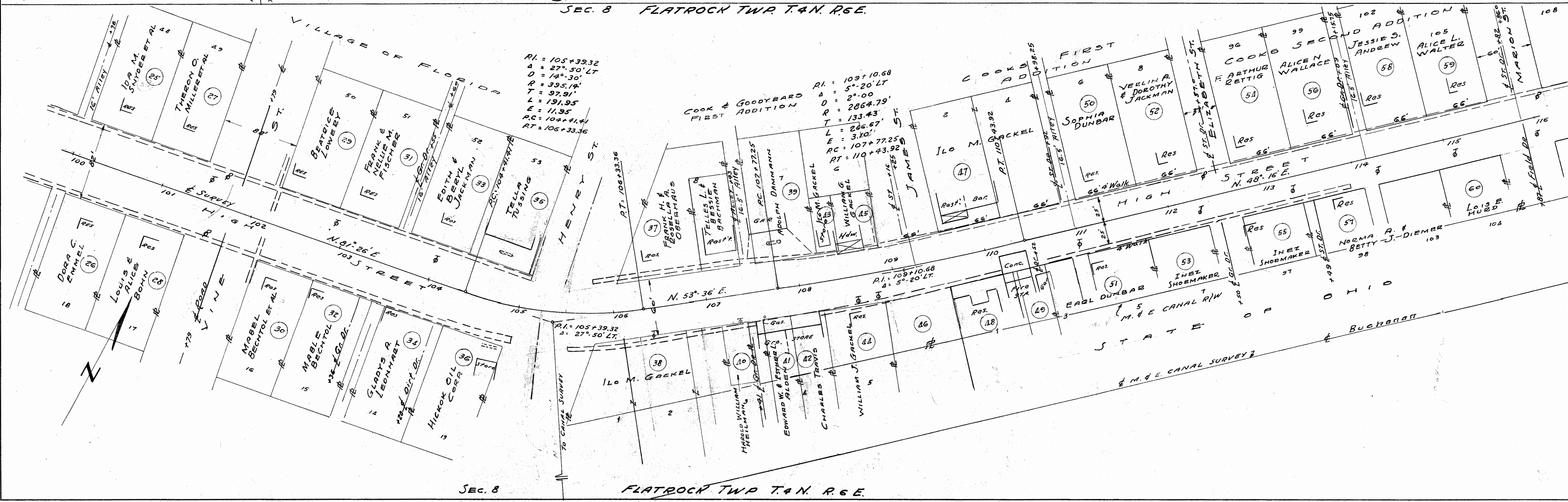
DATE: 9-25-1953 DRAWN BY R.R. J.S.
REVISED:
LENGTH OF PROJECT 5.689 MI.

DEFIANCE COUNTY
DEF-24-18.59



RI = 92+09.92
A = 43° 47' RT
D = 5° 00'
L = 200.0'
T = 561.02'
DC = 33° 47'
OS = 5° 00'
LT = 133.39'
ST = 66.72'
RC = 1485.92'
LC = 675.67'
E = 90.62'
T.S = 86+48.90
S.C = 88+48.90
C.S = 95+24.57
S.T = 97+24.57

SEC. 8 FLATROCK TWP T. 4 N. R. 6 E.
SEC. 8 FLATROCK TWP T. 4 N. R. 6 E.



RI = 105+39.32
A = 27° 50' LT
D = 14° 50' LT
R = 395.14'
T = 97.91'
L = 191.95'
E = 11.95'
RC = 104+41.41'
RT = 106+33.36'

RI = 109+10.68
A = 5° 20' LT
D = 2° 00'
R = 2864.79'
T = 133.43'
L = 286.67'
E = 3.10'
RC = 107+77.25'
RT = 110+43.92'

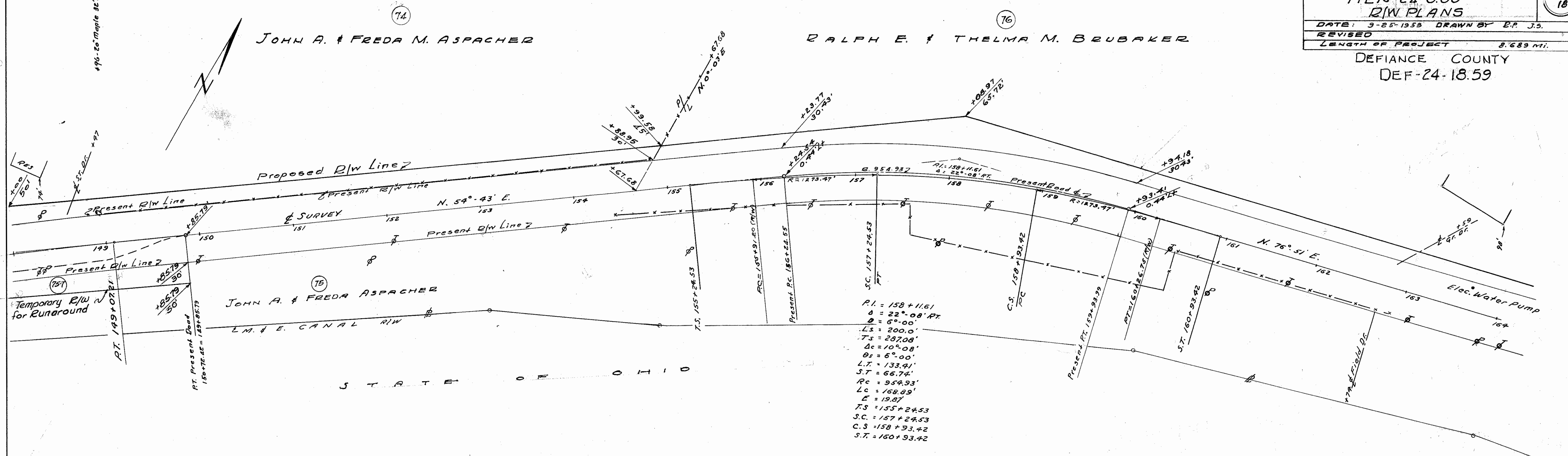
SEC. 8 FLATROCK TWP T. 4 N. R. 6 E.

HENRY COUNTY
HEN-24-0.00
R/W PLANS

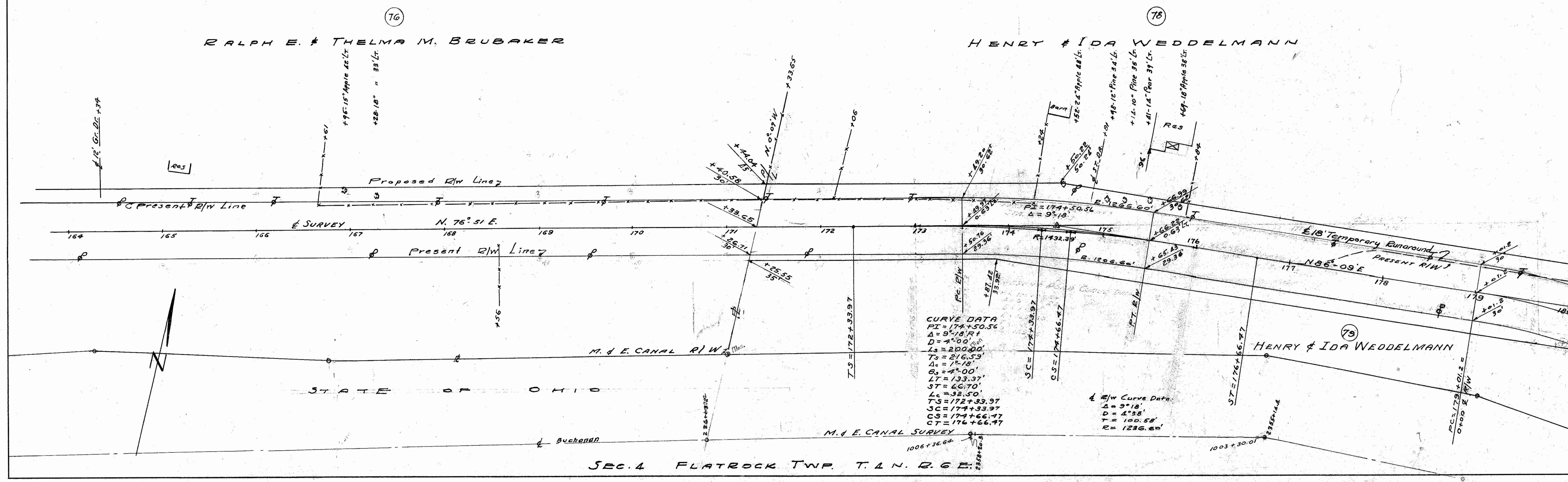
DATE: 9-25-1953 DRAWN BY E.P. J.S.
 REVISED
 LENGTH OF PROJECT 3.689 mi.

DEFIANCE COUNTY
DEF-24-18.59

Scanned
 June 1987



SEC. 4 FLATROCK TWP. T. 1 N. R. 6 E.
 SEC. 4 FLATROCK TWP. T. 1 N. R. 6 E.



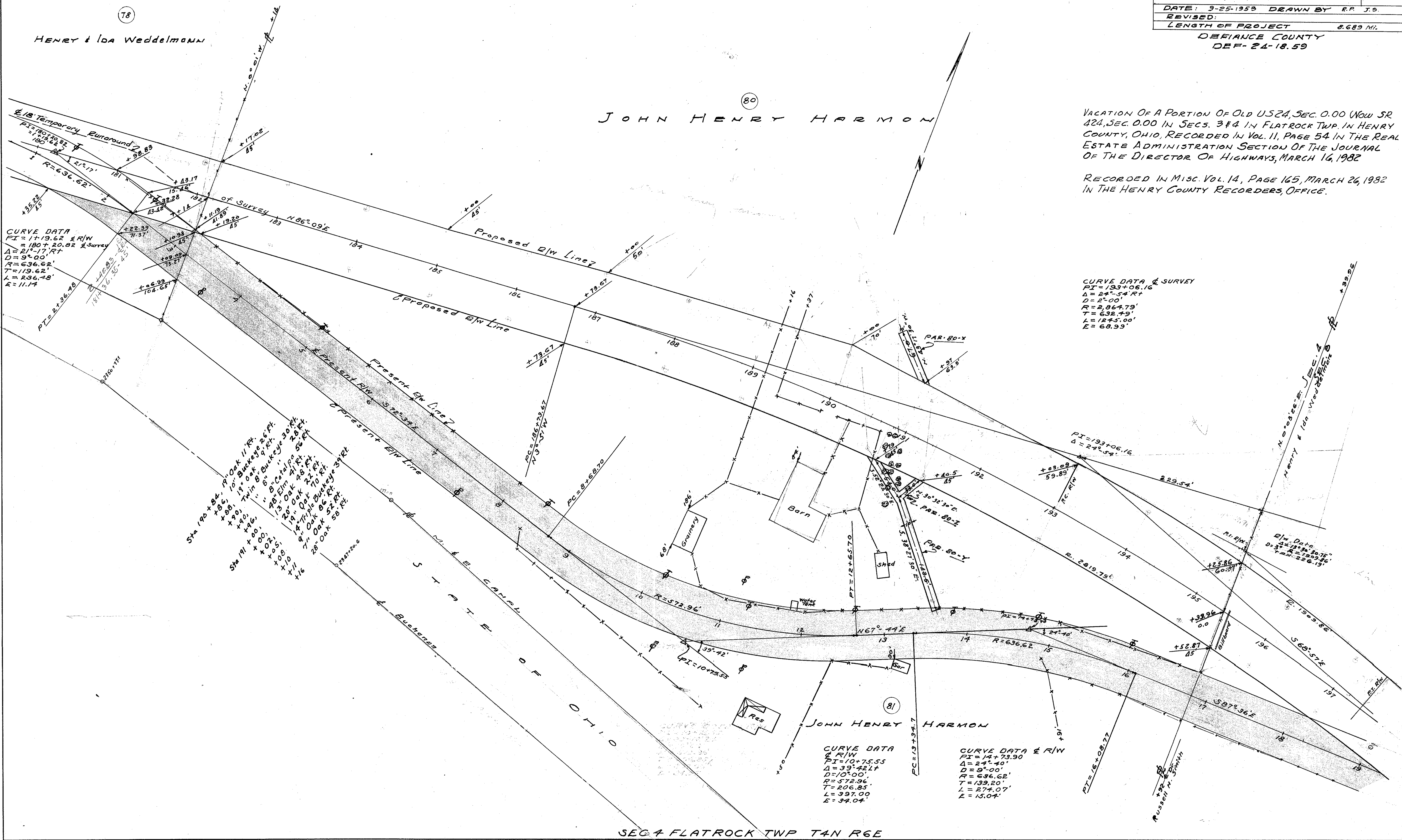
SEC. 4 FLATROCK TWP. T. 1 N. R. 6 E.

HENRY COUNTY
HEN-24-0.00
R/W PLANS

DATE: 9-25-1958 DRAWN BY R.P.J.S.
 REVISED:
 LENGTH OF PROJECT 0.689 MI.
 DEFIANCE COUNTY
 DEF-24-18.59



Scanned
 JUNE 1997



VACATION OF A PORTION OF OLD US24, SEC. 0.00 NOW SR 424, SEC. 0.00 IN SECS. 3 & 4 IN FLATROCK TWP. IN HENRY COUNTY, OHIO, RECORDED IN VOL. 11, PAGE 54 IN THE REAL ESTATE ADMINISTRATION SECTION OF THE JOURNAL OF THE DIRECTOR OF HIGHWAYS, MARCH 16, 1982

RECORDED IN MISC. VOL. 14, PAGE 165, MARCH 26, 1982 IN THE HENRY COUNTY RECORDERS OFFICE.

CURVE DATA & SURVEY
 PI=17+19.62
 Δ=21°-17'
 D=9°-00'
 R=636.62'
 T=119.62'
 L=236.48'
 E=11.14'

CURVE DATA & SURVEY
 PI=133+06.16
 Δ=24°-54'
 D=2°-00'
 R=2,864.79'
 T=632.79'
 L=1245.00'
 E=68.93'

- Sta 190 +84' 17" Oak 11 ft
- +86' 18" Buckeye 26 ft
- +88' 18" Oak 4 ft
- +90' Twin 8" Buckeye 20 ft
- +92' 8" Buckeye 20 ft
- +94' Elm 20 ft
- +96' Oak 28 ft
- +98' Oak 28 ft
- +100' 7" Oak 20 ft
- +102' 28" Oak 26 ft
- +104' 28" Oak 26 ft
- +106' 28" Oak 26 ft
- +108' 28" Oak 26 ft
- +110' 28" Oak 26 ft
- +112' 28" Oak 26 ft
- +114' 28" Oak 26 ft
- +116' 28" Oak 26 ft

CURVE DATA & SURVEY
 PI=10+75.55
 Δ=39°-42'
 D=10°-00'
 R=572.96'
 T=206.85'
 L=397.00'
 E=34.04'

CURVE DATA & SURVEY
 PI=14+73.90
 Δ=24°-40'
 D=9°-00'
 R=636.62'
 T=139.20'
 L=274.07'
 E=15.04'

HENRY COUNTY
HEN-24-0.00
R/W PLANS

DATE: 9-25-1953 DRAWN BY R.R. J.S.
 REVISED:
 LENGTH OF PROJECT 8.689 MI.
 DEFIANCE COUNTY
 DEF-24-18.59

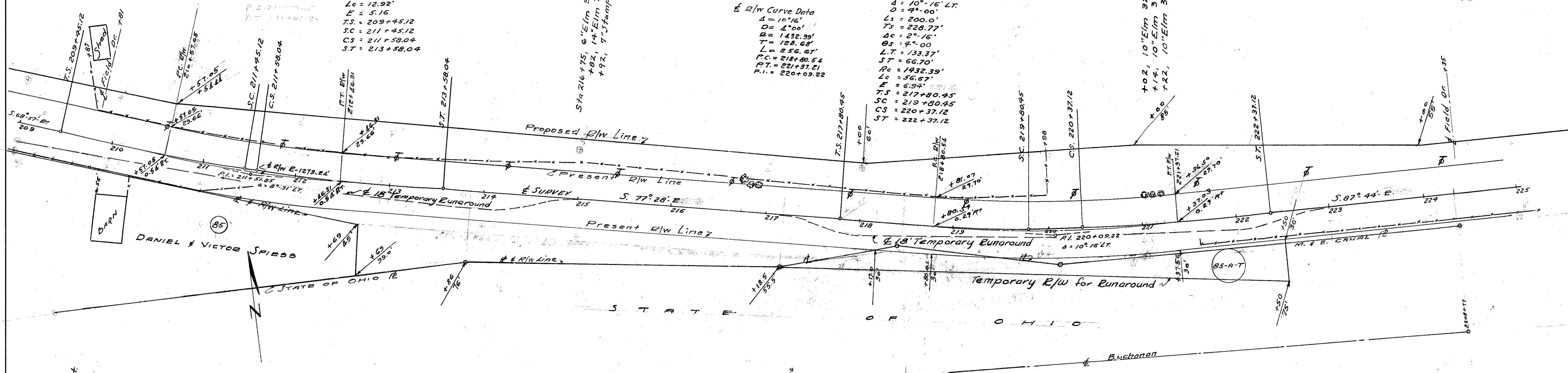
10
18

DANIEL & VICTOR SPIESS

Survey Curve Data
 R.I. = 211+51.85
 Δ = 8°-31' LT.
 D = 4°-00'
 Ls = 200.0'
 Ts = 206.73'
 R = 1273.24'
 Δc = 0°-31'
 Os = 4°-00'
 Lt = 133.37'
 Pc = 210+57.05
 Pt = 212+46.31
 P.I. = 211+51.85
 Rc = 1432.33'
 Lc = 12.92'
 E = 5.16'
 Ts = 209+45.12
 Sc = 211+45.12
 Cs = 211+58.04
 St = 213+58.04

R/W Curve Data
 Δ = 10°-16'
 D = 4°-00'
 Ls = 1432.39'
 Ts = 128.68'
 R = 256.67'
 Pc = 218+80.54
 Pt = 221+37.21
 P.I. = 220+09.22

Survey Curve Data
 R.I. = 220+09.22
 Δ = 10°-16' LT.
 D = 4°-00'
 Ls = 200.0'
 Ts = 228.77'
 R = 1432.33'
 Δc = 2°-16'
 Os = 4°-00'
 Lt = 133.37'
 Pc = 217+80.45
 Pt = 219+80.45
 Cs = 220+37.12
 St = 222+37.12



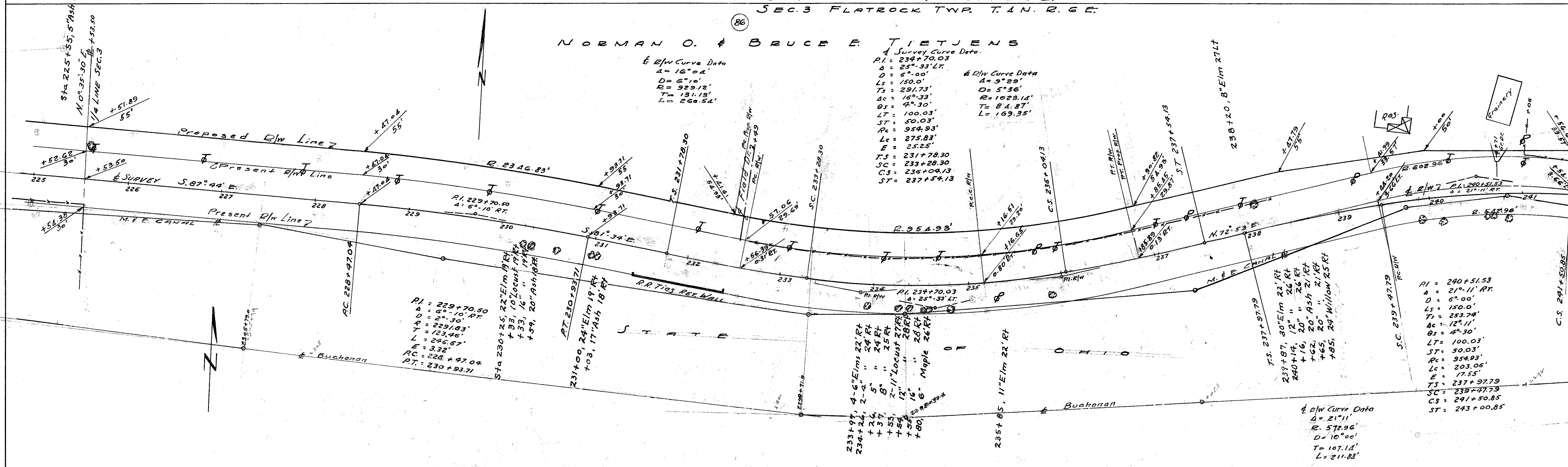
SEC. 3 FLATROCK TWP. T. 4 N. R. 6 E.

NORMAN O. & BRUCE E. TIETJENS

R/W Curve Data
 Δ = 16°-04'
 D = 6°-10'
 Ls = 929.12'
 Ts = 131.13'
 R = 260.54'

Survey Curve Data
 R.I. = 234+70.03
 Δ = 25°-33' LT.
 D = 6°-00'
 Ls = 150.0'
 Ts = 291.73'
 R = 1023.14'
 Δc = 16°-33'
 Os = 4°-30'
 Lt = 100.03'
 Pc = 954.93'
 Pt = 275.83'
 E = 25.25'
 Ts = 231+78.30
 Sc = 233+28.30
 Cs = 236+04.13
 St = 237+54.13

R/W Curve Data
 Δ = 9°-29'
 D = 5°-36'
 Ls = 169.35'

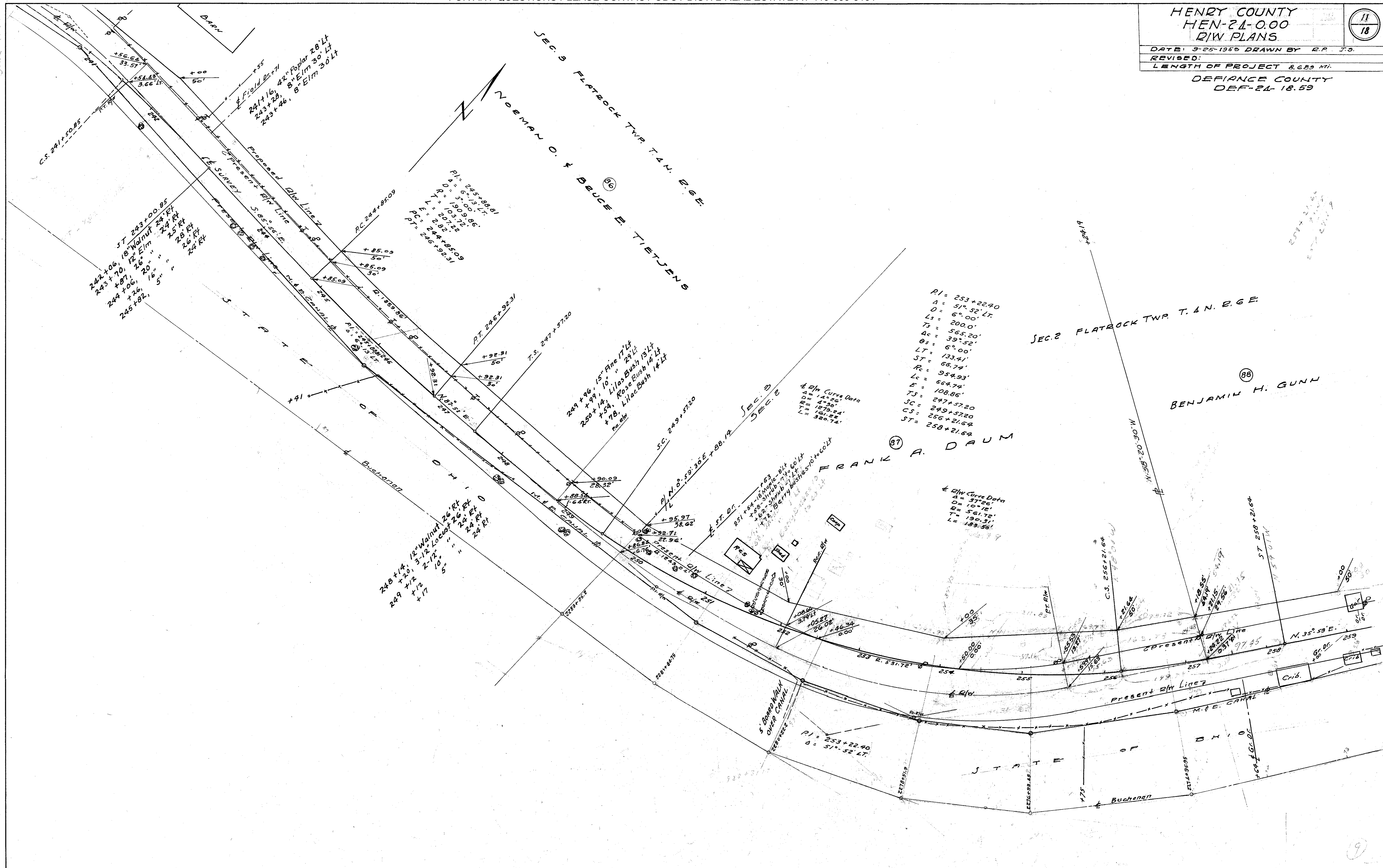


SEC. 3 FLATROCK TWP. T. 4 N. R. 6 E.

HENRY COUNTY
HEN-24-0.00
R/W PLANS

DATE: 9-25-1958 DRAWN BY: R.P. J.S.
REVISED:
LENGTH OF PROJECT: 8.689 MI.
DEFIANCE COUNTY
DEF-24-18.59

Scanned June 1997



ST 243+00.85
242+06, 18" Walnut 24' Rt
243+70, 12" Elm 24' Rt
244+06, 26" " 25' Rt
245+02, 16" " 26' Rt
246+02, 5" " 24' Rt

PI = 245+88.81
D = 6° 13' Lt
R = 1009.86'
L = 207.22'
E = 244+85.09
PT = 246+92.31

PI = 253+22.40
D = 51° 52' Lt
Ls = 6° 00'
Ts = 200.0'
Ac = 565.20'
Bs = 39° 52'
Lt = 6° 00'
St = 133.41'
Rc = 66.74'
Lc = 954.93'
E = 664.74'
Ts = 108.86'
SC = 249+57.20
CS = 256+21.64
ST = 258+21.64

R/W Curve Data
D = 14° 26'
R = 420'
L = 127.24'
Ls = 151.22'
Lc = 320.74'

248+14, 12" Walnut 26' Rt
249+12, 3-12 Locust 26' Rt
249+12, 2-17, 10" " 24' Rt
249+17, 5" " 24' Rt

249+90, 15" Pine 17' Lt
250+14, 10" " 29' Lt
250+14, Lilac Bush 15' Lt
250+17, Rose Bush 14' Lt
250+17, Lilac Bush 14' Lt

R/W Curve Data
D = 14° 26'
R = 420'
L = 127.24'
Ls = 151.22'
Lc = 320.74'

R/W Curve Data
D = 37° 26'
R = 107.12'
L = 561.72'
Ls = 190.31'
Lc = 183.58'

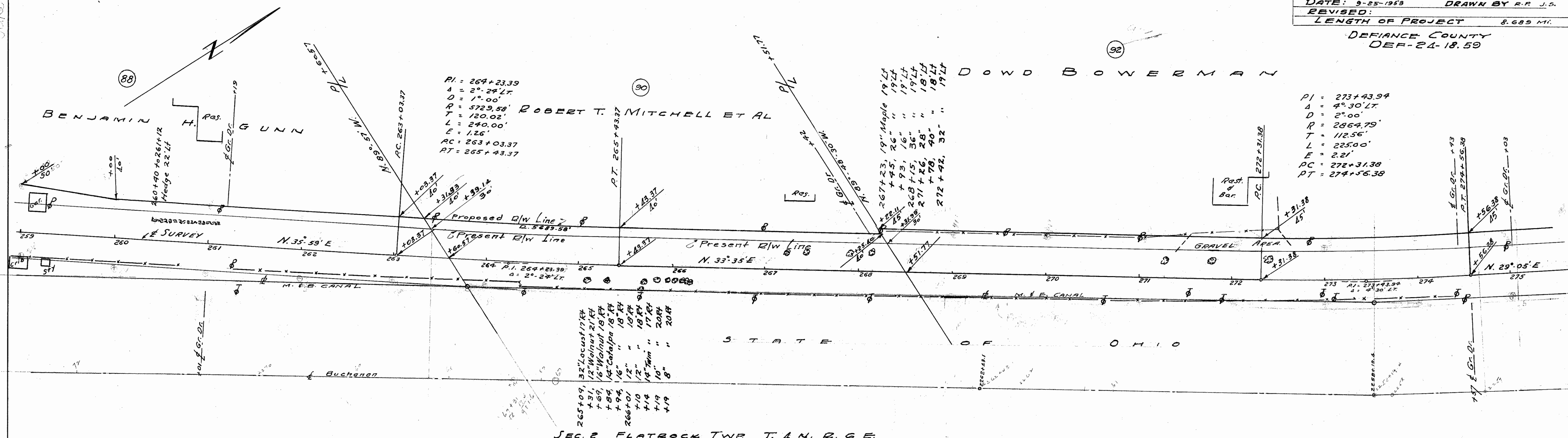
PI = 253+22.40
D = 51° 52' Lt

HENRY COUNTY
HEN-21-0.00
R/W PLANS

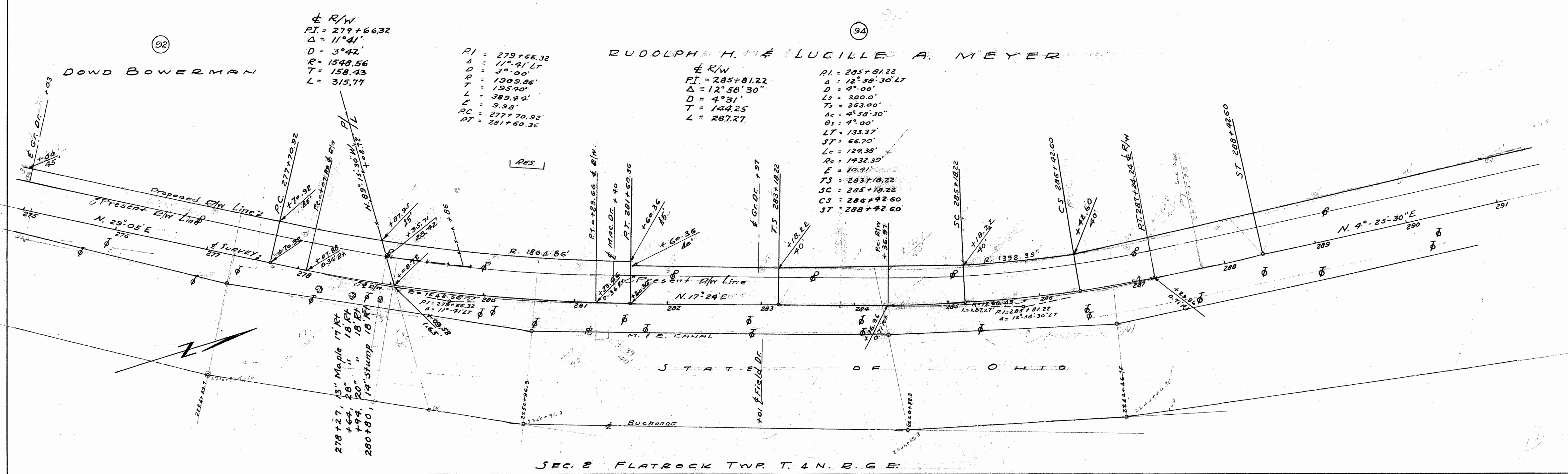
DATE: 9-25-1959 DRAWN BY R.P. J.S.
 REVISED:
 LENGTH OF PROJECT 8.689 MI.
 DEFIANCE COUNTY
 DEF-24-18.59

12
18

SCANNED
 JUNE 1997



SEC. 2 FLATROCK TWP. T. 4 N. R. 6 E.
 SEC. 2 FLATROCK TWP. T. 4 N. R. 6 E.



SEC. 2 FLATROCK TWP. T. 4 N. R. 6 E.

HENRY COUNTY
HEN-24-0.00
R/W PLANS

DATE 9-25-1963 DRAWN BY R.P. J.S.
 REVISED 3-3-54 1/15/57
 LENGTH OF PROJECT 8.689 MI.
 DEFIANCE COUNTY
 DEF-24-18.59

5/20/64
 5/11/62

SOPHIA DREWES ET AL

CARL T. VON DEYLEN

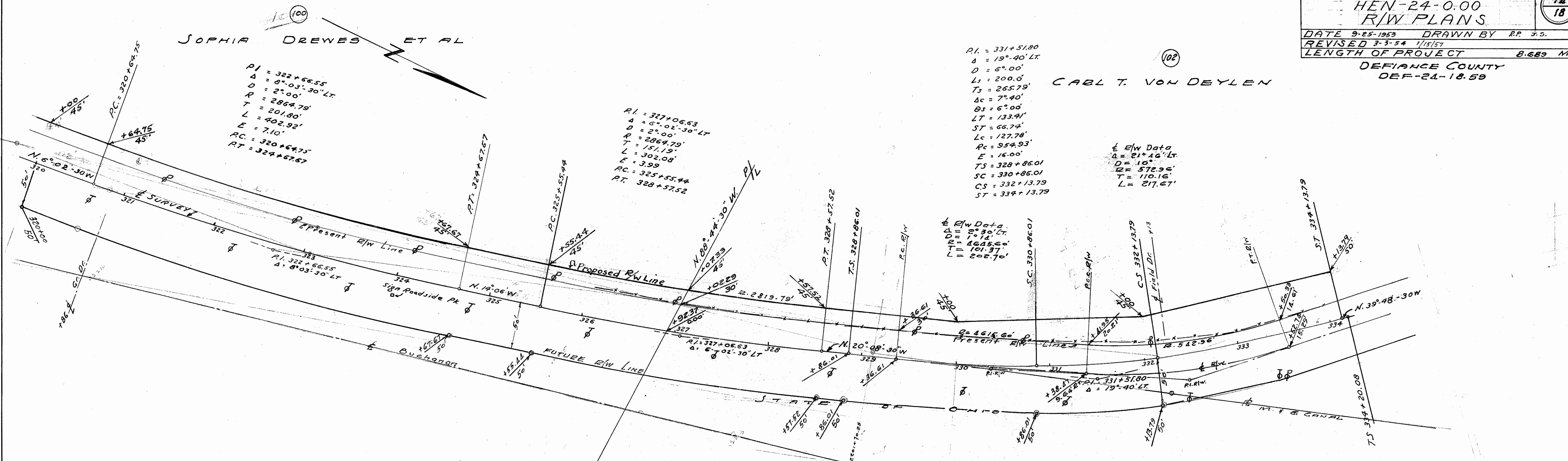
PI = 322+56.55
 Δ = 8°-03'-30" LT
 R = 2864.79'
 T = 201.80'
 L = 402.92'
 E = 7.10'
 RC = 320+64.75
 RT = 324+67.67

PI = 327+06.63
 Δ = 6°-02'-30" LT
 R = 2864.79'
 T = 151.19'
 L = 302.08'
 E = 3.99
 RC = 325+55.44
 RT = 328+57.52

PI = 331+51.80
 Δ = 19°-40' LT
 D = 6°-00'
 Ls = 200.0'
 Ts = 265.79'
 Δc = 7°-40'
 Δs = 6°-00'
 LT = 133.41'
 ST = 66.74'
 Lc = 127.78'
 Rc = 954.93'
 E = 16.00'
 TS = 328+86.01
 SC = 330+86.01
 CS = 332+13.79
 ST = 334+13.79

E/W Data
 Δ = 21°-16' LT
 D = 10°-00'
 R = 572.36'
 T = 110.16'
 L = 217.67'

E/W Data
 Δ = 2°-50' LT
 D = 10°-00'
 R = 4645.66'
 T = 101.37'
 L = 202.70'



SEC. 35 NAPOLEON TWP. T. 5 N. R. 6 E.
 SEC. 35 NAPOLEON TWP. T. 5 N. R. 6 E.

CARL T. VON DEYLEN

335+77.4, 4, 8' x 19' Walnut
 Clump 44' LT
 +90, 5' x 6" Ash 42' LT
 336+10, 8' x 10" Elm 36' LT
 +39, Wild Cherry 40' LT
 +51, 70' Elm 40' LT
 +44, 8' Elm 52' LT
 +47, 12' Elm 52' LT
 +50, 18' Sp. Camare 21' LT
 338+79, 19" Sp. Camare 37' LT
 +66, 24" Oak 44' LT
 339+22, 10' Elm 35' LT
 +24, 8' Elm 39' LT

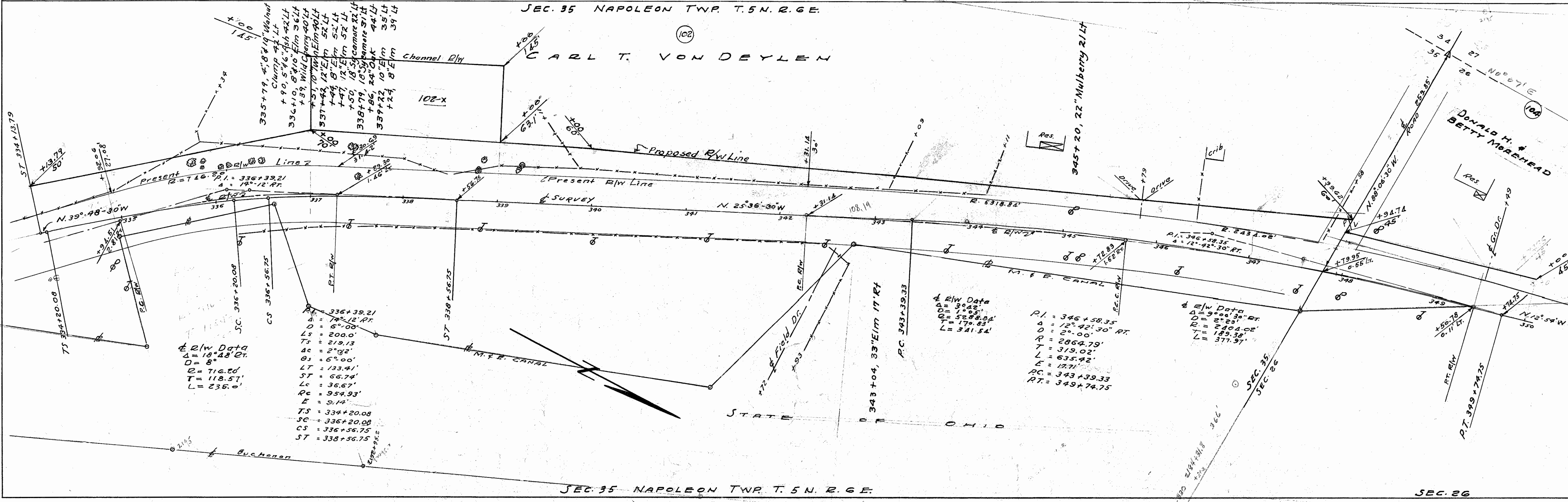
E/W Data
 Δ = 16°-43' LT
 D = 8°-00'
 R = 716.20'
 T = 118.57'
 L = 235.0'

PI = 336+39.21
 Δ = 14°-12' RT
 D = 6°-00'
 Ls = 200.0'
 Ts = 219.13'
 Δc = 2°-02'
 Δs = 6°-00'
 LT = 133.41'
 ST = 66.74'
 Lc = 36.67'
 Rc = 954.93'
 E = 5.14'
 TS = 334+20.08
 SC = 336+20.08
 CS = 336+55.75
 ST = 338+56.75

E/W Data
 Δ = 3°-22'
 D = 12°-00'
 R = 5288.84'
 T = 179.83'
 L = 341.54'

PI = 346+58.35
 Δ = 12°-42'-30" RT
 D = 2°-00'
 R = 2864.79'
 T = 319.02'
 L = 635.42'
 E = 12.71'
 RC = 343+39.33
 RT = 349+74.75

E/W Data
 Δ = 9°-43'-30" RT
 D = 2°-00'
 R = 2864.02'
 T = 189.38'
 L = 377.91'



SEC. 35 NAPOLEON TWP. T. 5 N. R. 6 E.

SEC. 26

WILLIAM N. GUSTWILER

ALLEN R. STALTER

R/W
Δ = 9° 38' L
D = 7° 30'
R = 1273.57'
T = 107.30'
L = 217.07'
E = 4.51'
PI = 376+02.84
PC = 374+35.34
PT = 377+09.61

R/W
Δ = 30° 50' R
D = 7° 06' 30"
R = 806.16'
T = 222.40'
L = 433.71'
E = 30.02'
PI = 375+57.01
PC = 377+34.61
PT = 381+68.32

R/W
Δ = 12° 40'
D = 7° 26'
R = 770.93'
T = 85.60'
L = 170.43'
E = 4.73'
PT = 382+53.92
PC = 381+68.32
PT = 383+38.75

R/W
Δ = 38° 46'
D = 13° 26'
R = 486.76'
T = 150.00'
L = 288.44'
E = 25.62'
PI = 388+40.81
PC = 386+90.81
PT = 389+19.25

NOTE: STATE PARK 2-9

Directors Journal Entry On Nov. 12, 1980 In The Real Estate Administration Section Of The Journal Of The Director Of Transportation, Vol. 9 Page 244 That The Roadside Park Is No Longer Needed By The State Of Ohio For Highway Or Roadside Park Purposes.

Quitclaimed Unto City Of Napoleon, Ohio Per Director's Deed Dated Dec. 22, 1989 And Recorded In The Records Of The Henry County Recorders Office In Vol. 242 Page 382.

NOTE:

Departmental Transfer - State owned lands Parcel N° ABDEA revert from O.D.O.T. to O.D.N.R. per entry in the Real Estates Administration Section of the journal of the Director of Transportation, made on Sept. 5, 1990 in Volume 19 page 389. Said J. E. also recorded with Henry County Recorder's Office in MISC. Vol. 17 Pg. 325 on Sept. 12, 1990.

See Sheet 17 of 18

PI = 381+61.70
Δ = 44° 22' 30" Rt
D = 4° 00'
Ls = 200'
Ts = 684.66
Δc = 36° 22' 30"
LT = 133.37'
ST = 66.70'
Le = 909.38'
θ = 4° 00'
R = 1432.30

PI = 394+52.73
Δ = 11° 48' Lt
D = 1° 00'
R = 5729.58'
T = 592.10'
L = 1180.00'
E = 30.51'
PC = 388+60.63
PT = 400+40.63

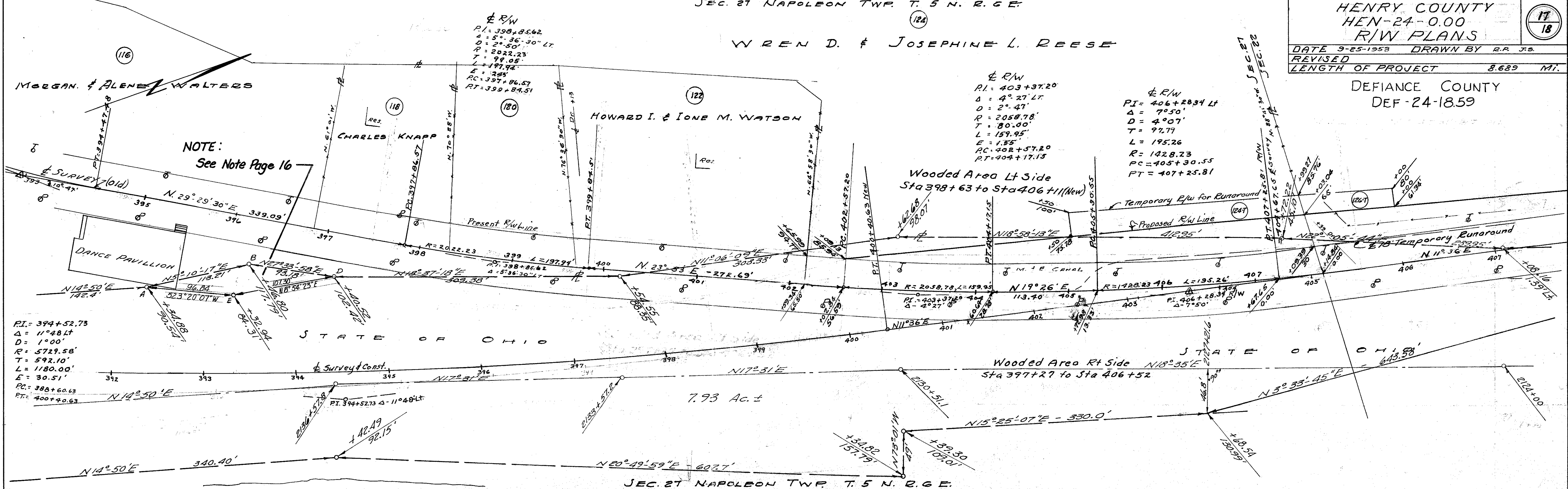
Rev. Transferred To City Of Napoleon Park 2-9	2-22-91
Rev. Canal Lands From Sta. 202+25.5 to 2140	7-9-60
Revision	Date

WREN D. & JOSEPHINE L. REESE

± R/W
PI = 390 + 85.62
Δ = 5° 36' 30" LT
D = 2° 50'
T = 2022.23
L = 197.94
E = 245'
RC = 397 + 84.57
RT = 399 + 84.51

± R/W
PI = 403 + 37.20
Δ = 4° 27' LT
D = 2° 47'
R = 2058.78'
T = 80.00'
L = 159.95'
E = 135'
RC = 402 + 57.20
RT = 404 + 17.13

± R/W
PI = 406 + 28.34 Lt
Δ = 7° 50'
D = 4° 07'
T = 97.77
L = 195.26
R = 1428.23
RC = 405 + 30.55
RT = 407 + 25.81



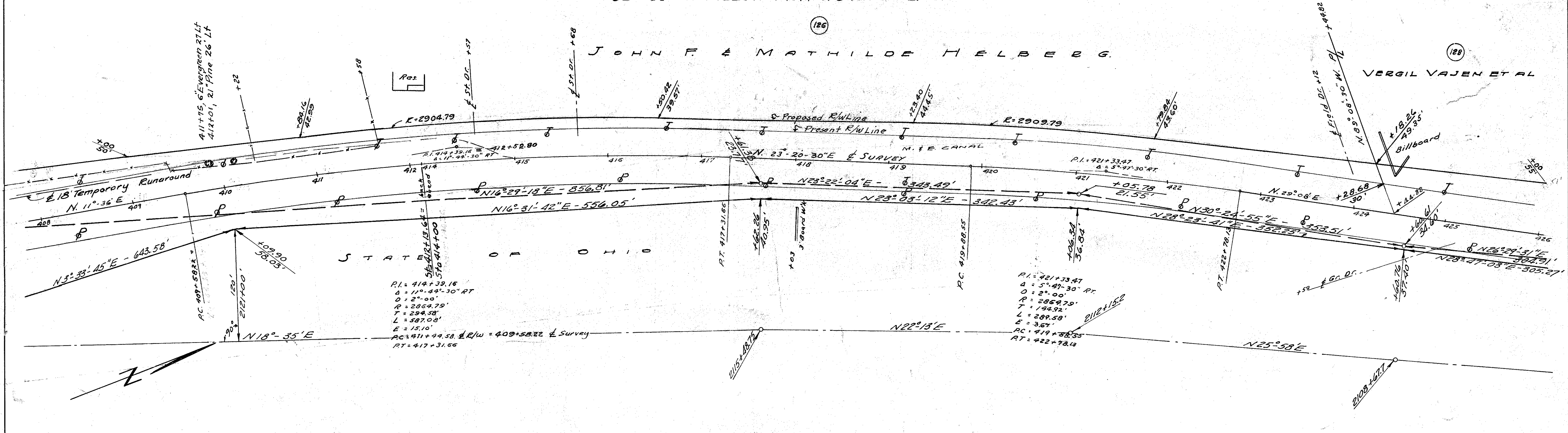
NOTE:
See Note Page 16

RI = 394 + 52.73
Δ = 11° 48' LT
D = 1° 00'
R = 5729.58'
T = 592.10'
L = 1180.00'
E = 30.51'
RC = 388 + 60.63
RT = 400 + 40.63

7.93 Ac. ±

SEC. 21 NAPOLEON TWP. T. 5 N. R. 6 E.
SEC. 22 NAPOLEON TWP. T. 5 N. R. 6 E.

JOHN F. & MATHILDE HELBERG



RI = 414 + 32.16
Δ = 11° 44' 30" RT
D = 2° 00'
R = 2864.79'
T = 294.58'
L = 387.08'
E = 151.0'
RC = 411 + 44.58 ± R/W = 409 + 58.22 ± Survey
RT = 417 + 31.66

RI = 421 + 33.47
Δ = 5° 47' 30" RT
D = 2° 00'
R = 2869.79'
T = 144.92'
L = 289.58'
E = 3.67'
RC = 419 + 38.55
RT = 422 + 38.14

9-27-90	Rev. W. R/W Line Sta. 392+34 to 394+40
7-9-62	Rev. Canal Lands from Sta. 2102+25.5 to 2140
Date	Revision

HENRY COUNTY
HEN-24-0.00
R/W PLANS

DATE 9-25-1959 DRAWN BY R.P. J.S.
 REVISED
 LENGTH OF PROJECT 8.689 MI.

DEFIANCE COUNTY
DEF-24-1859

