

STATE OF OHIO
 DEPARTMENT OF HIGHWAYS AND PUBLIC WORKS
 DEPARTMENT OF HIGHWAYS
 BUREAU OF CONSTRUCTION

DEFIANCE - NAPOLEON ROAD

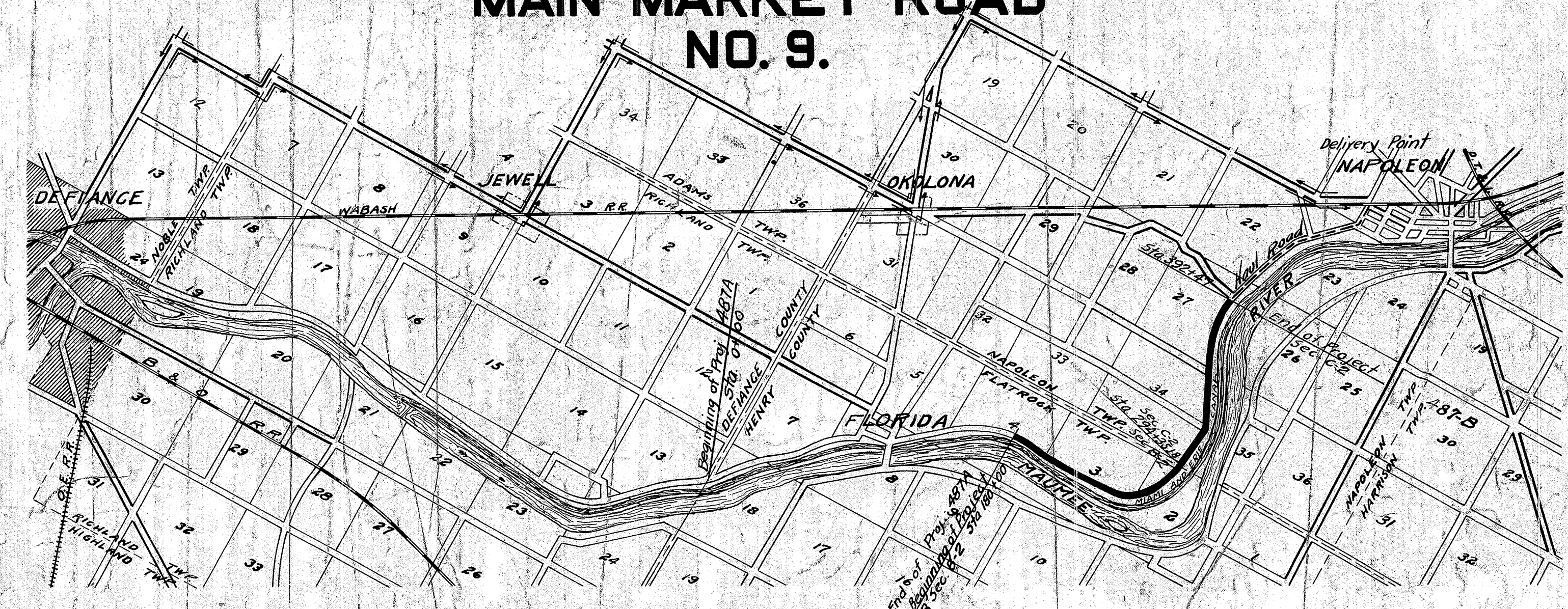
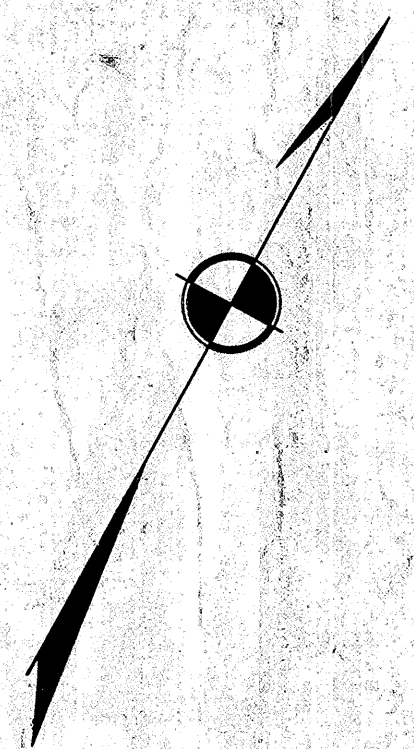
I.C.H. No. 316. SEC. B-2. - C-2. PET. No. 5270
 HENRY COUNTY
 FLATROCK - NAPOLEON TWPS. APR. 1926
 MAIN MARKET ROAD
 NO. 9.

INDEX

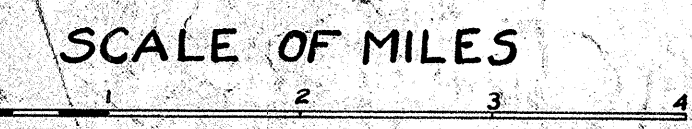
Title Page	p.1.
Typical Cross Sections	p.2.
Plans and Profile	p.3-9
Cross Sections	p.10-22.
Structural Plans	p.22-26.
Summary Sheet	p.27.

CONVENTIONAL SIGNS

- State Line
- County Line
- Township Line
- Section Line
- Property Line not fenced
- Center Line
- City or Village Line
- Fence
- Telephone or Telegraph
- Steam Railroad
- Electric Line
- Guard Rail
- Drain Pipe - new
- Drain Pipe - old



LOCATION PLAN



PORTION TO BE IMPROVED

DETOURS SHOWN THUS

IMPROVED ROADS

SCALES

- Plan 1" = 100'
- Profile (Vertical) 1" = 10'
- Profile (Horizontal) 1" = 100'
- Cross Sections 1" = 5'

SUPPLEMENTAL PRINTS OF STRUCTURAL DRAWINGS.

- Drawing Number 300
- Drawing Number 301
- Drawing Number 305
- Drawing Number 105 Const.
- Drawing Number 100 or 98

Approved:
 Date: 1/14/26 Chief Engr. Bureau of Construction

Approved: _____
 Date: _____ Chief Engr. Bureau of Maintenance.

Approved: _____
 Date: _____ Chief Engr. Bureau of Maintenance.

The Standard Specifications of the State of Ohio, Division of Highways, in force on date of contract will govern this improvement.

I hereby approve these plans and declare that the making of this improvement will require the closing to traffic of the highway and that detours will be provided as shown on the plans and estimates.

Approved:
 Date: 9-5-27 Resident Engineer.

Approved:
 Date: 11/30/27 Res. Dep. State Highway Commissioner.

Approved:
 Date: _____ State Highway Engineer.

Approved:
 Date: _____ Director of Highways and Public Works.

Recommended for Approval: _____
 Date: _____ District Engineer, Bureau of Public Roads.

Recommended for Approval: _____
 Date: _____ Chief Engineer, Bureau of Public Roads

Approved: _____
 Date: _____ Chief of Bureau.

We the Commissioners of Henry County hereby approve these plans and certify that the right-of-way 60 feet wide is available for the construction, maintenance and repair of the above highway

Date: 5/26/26 County Commissioners.



FED RD DIST NO	STATE	FED AID PROJECT	FISCAL YEAR
10	OHIO	487-B	1927

I.C.H. 316-SEC. B-2 & C-2
HENRY COUNTY

3/27

Left Edge of Pavement	Width	Station	Grade Elev.	Right Width	Edge of Pavement
695.72	9.00	179+69.2	695.87	9.00	695.72
695.94	9.00	179+94.2	695.85	9.13	695.70
696.17	9.00	180+19.2	695.84	9.54	695.69
696.40	9.00	180+44.2	695.83	10.21	695.68
696.63	9.00	180+69.2	695.82	11.15	695.67
696.86	9.00	180+94.2	695.81	11.94	695.66
697.11	9.00	181+19.2	695.82	12.25	695.67
697.14	9.00	181+50	695.85	12.25	695.70
697.16	9.00	181+75	695.87	12.25	695.72
697.19	9.00	182+00	695.90	12.25	695.75
697.22	9.00	182+32.53	695.93	12.25	695.78
697.01	9.00	182+57.53	695.96	11.94	695.81
696.79	9.00	182+82.53	695.98	11.15	695.83
696.58	9.00	183+07.53	696.01	10.21	695.86
696.36	9.00	183+32.53	696.03	9.54	695.88
696.15	9.00	183+57.53	696.06	9.13	695.91
695.93	9.00	183+82.53	696.08	9.00	695.93

75.10 sq. yds. extra pavement

Left Edge of Pavement	Width	Station	Grade Elev.	Right Width	Edge of Pavement
695.35	9.00	188+28	695.50	9.00	695.38
695.18	9.13	188+53	695.33	9.00	695.42
695.00	9.54	188+78	695.15	9.00	695.66
694.83	10.21	189+03	694.98	9.00	695.55
694.65	11.15	189+28	694.80	9.00	695.61
694.48	11.94	189+53	694.63	9.00	695.68
694.30	12.25	189+78	694.45	9.00	695.74
694.15	12.25	190+00	694.30	9.00	695.59
693.98	12.25	190+25	694.13	9.00	695.42
693.80	12.25	190+50	693.95	9.00	695.24
693.63	12.25	190+75	693.78	9.00	695.07
693.45	12.25	191+00	693.60	9.00	694.89
693.28	12.25	191+25	693.43	9.00	694.72
693.10	12.25	191+50	693.25	9.00	694.54
692.93	12.25	191+75	693.08	9.00	694.37
692.75	12.25	192+00	692.90	9.00	694.19
692.67	12.25	192+11	692.82	9.00	694.11
692.53	12.25	192+36	692.68	9.00	693.73
692.43	12.25	192+61	692.58	9.00	693.39
692.36	12.25	192+86	692.51	9.12	693.08
692.32	12.25	193+11	692.47	9.51	692.80
692.31	11.94	193+36	692.46	10.15	692.55
692.34	11.15	193+61	692.49	11.05	692.34

142.93 sq. yds. extra pavement

Left Edge of Pavement	Width	Station	Grade Elev.	Right Width	Edge of Pavement
692.34	11.15	193+61	692.49	11.05	692.34
692.62	10.21	193+86	692.54	11.82	692.39
692.96	9.54	194+11	692.64	12.12	692.49
693.30	9.13	194+36	692.74	12.12	692.59
693.53	9.00	194+61	692.84	12.12	692.69
693.97	9.00	194+86	692.94	12.12	692.79
694.31	9.00	195+11	693.04	12.12	692.89
694.47	9.00	195+50	693.20	12.12	693.05
694.57	9.00	195+75	693.30	12.12	693.15
694.70	9.00	196+08.38	693.43	12.12	693.28
694.86	9.00	196+33.38	693.53	11.82	693.38
694.92	9.00	196+58.38	693.63	11.05	693.48
694.29	9.00	196+83.38	693.73	10.15	693.58
694.15	9.00	197+08.38	693.83	9.15	693.68
694.01	9.00	197+33.38	693.93	9.12	693.78
693.88	9.00	197+58.38	694.03	9.00	693.88

98.36 sq. yds. extra pavement

Left Edge of Pavement	Width	Station	Grade Elev.	Right Width	Edge of Pavement
694.35	9.00	199+13	694.50	9.00	694.35
694.57	9.00	199+38	694.50	9.10	694.35
694.78	9.00	199+63	694.49	9.38	694.34
694.98	9.00	199+88	694.47	9.86	694.32
695.16	9.00	200+13	694.43	10.56	694.28
695.34	9.00	200+38	694.39	11.22	694.24
695.53	9.00	200+63	694.36	11.50	694.21
695.47	9.00	201+00	694.30	11.50	694.15
695.43	9.00	201+25	694.26	11.50	694.11
695.39	9.00	201+50	694.22	11.50	694.07
695.35	9.00	201+75	694.18	11.50	694.03
695.32	9.00	202+00	694.13	11.50	694.00
695.30	9.00	202+25	694.13	11.50	693.98
695.06	9.00	202+44.69	694.11	11.22	693.96
694.85	9.00	202+69.69	694.12	10.56	693.97
694.64	9.00	202+94.69	694.13	9.86	693.98
694.45	9.00	203+19.69	694.16	9.38	694.01
694.29	9.00	203+44.69	694.22	9.10	694.07
694.14	9.00	203+69.69	694.29	9.00	694.14

73.24 Sq. yds. extra pavement

Sta. 180+00 Beginning of Road Old Project No. 487-B
Beginning of Project

Sta. 180+30
Extend old 12" C.I.P. Culvert to the left 6 ft. and
build a new 54" N.I. Catch Basin at end 21' left of E.
Remove old brick Catch Basin. Headwall on right O.K.
Remove old brick Catch Basin.
Total length 65'

MIAMI
Δ = 21°-20'
D = 10°-0'
E = 10.07'
T = 107.93'
L = 213.33'
R = 573.14'

NOTE: grade line shown is crown of finished pavement, Type 'M(ST)'.
Grade line is lowered 0.16 Ft. for Type 'C'.
For grading only, Grade line shown to be lowered .23 Ft.

B.M. Sta. 86+00
Spike in locust 28' right of E.
Elev. 695.07

B.M. Sta. 194+00
Spike in Elm, 30' left of E.
Elev. 688.70

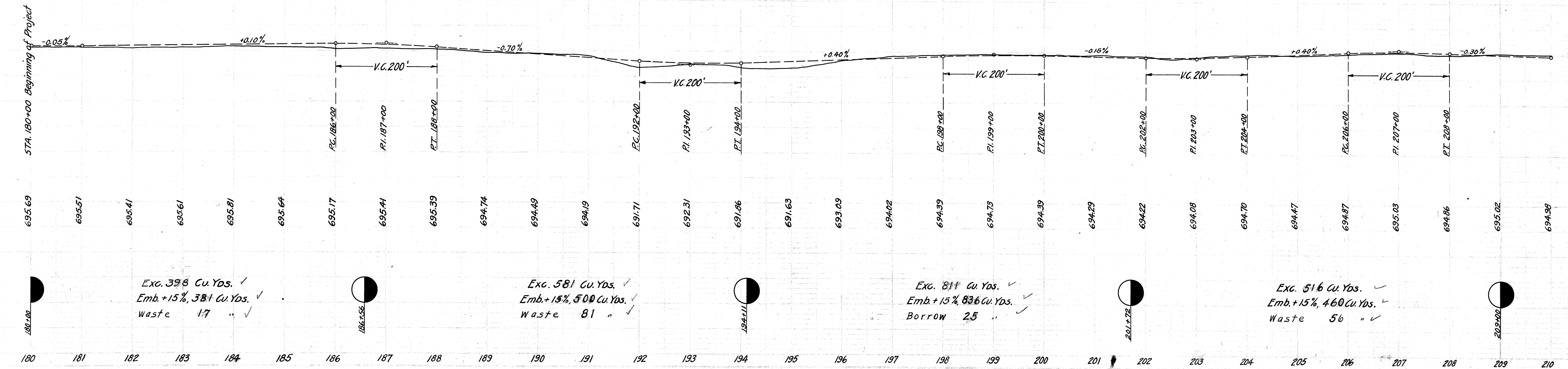
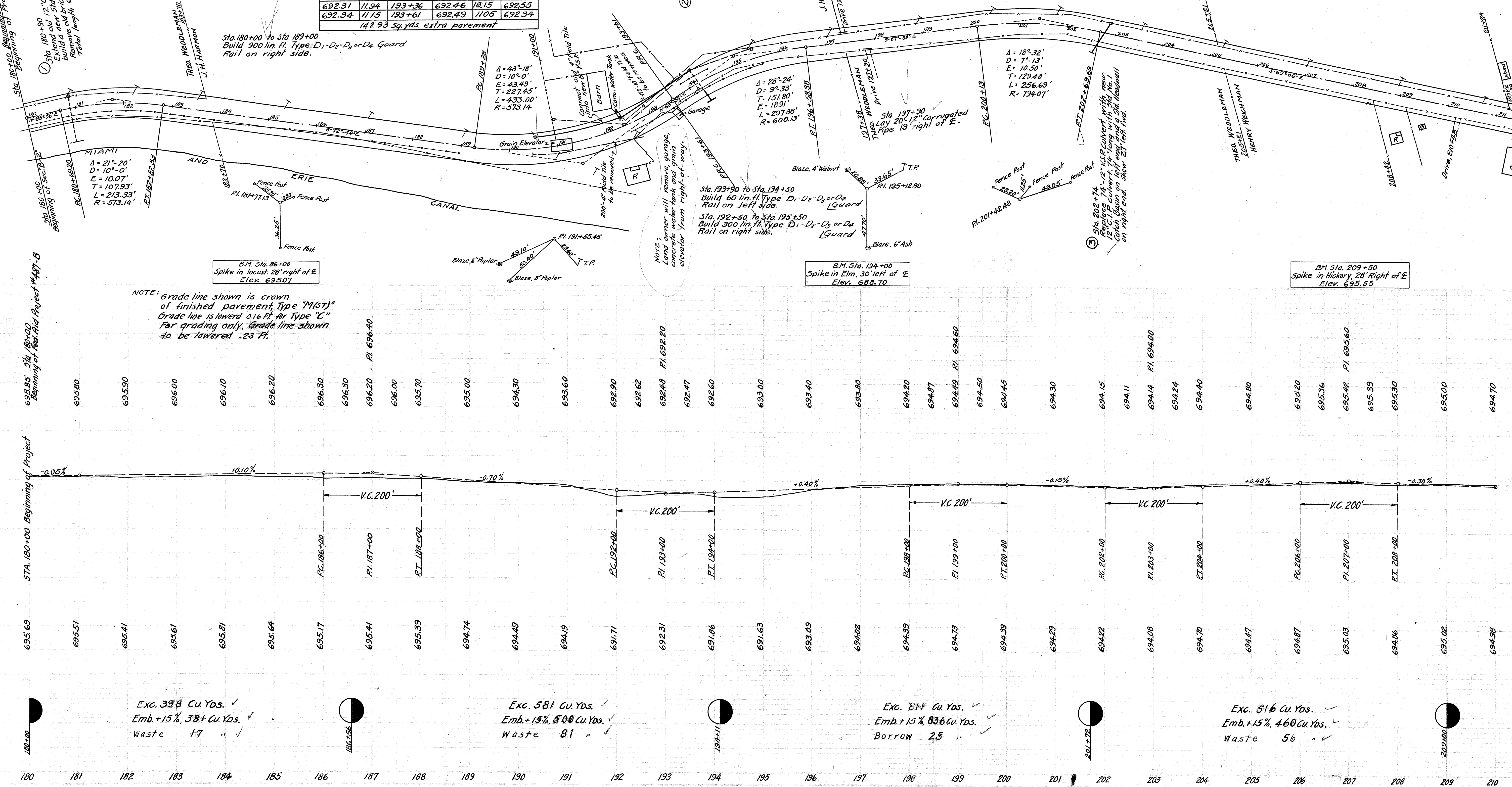
B.M. Sta. 209+50
Spike in Hickory, 28' Right of E.
Elev. 695.55

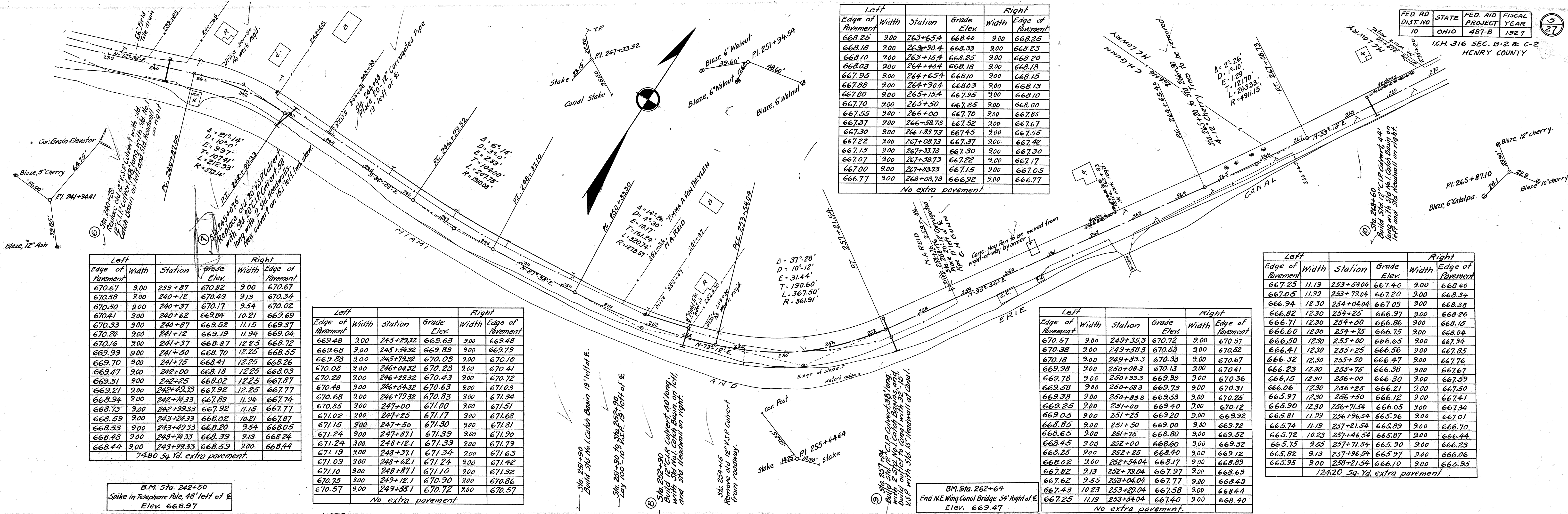
Exc. 398 Cu. Yds. ✓
Emb. +15%, 381 Cu. Yds. ✓
Waste 17 " ✓

Exc. 581 Cu. Yds. ✓
Emb. +15%, 500 Cu. Yds. ✓
Waste 81 " ✓

Exc. 811 Cu. Yds. ✓
Emb. +15%, 836 Cu. Yds. ✓
Borrow 25 " ✓

Exc. 516 Cu. Yds. ✓
Emb. +15%, 460 Cu. Yds. ✓
Waste 56 " ✓





Left		Station	Grade Elev.	Right	
Edge of Pavement	Width			Width	Edge of Pavement
668.25	9.00	263+65.4	668.40	9.00	668.25
668.18	9.00	263+90.4	668.33	9.00	668.23
668.10	9.00	263+15.4	668.25	9.00	668.20
668.03	9.00	264+40.4	668.18	9.00	668.18
667.95	9.00	264+65.4	668.10	9.00	668.15
667.88	9.00	264+90.4	668.03	9.00	668.13
667.80	9.00	265+15.4	667.95	9.00	668.10
667.70	9.00	265+50	667.85	9.00	668.00
667.55	9.00	266+00	667.70	9.00	667.85
667.37	9.00	266+38.73	667.52	9.00	667.67
667.30	9.00	266+83.79	667.45	9.00	667.55
667.22	9.00	267+08.73	667.37	9.00	667.42
667.15	9.00	267+33.73	667.30	9.00	667.30
667.07	9.00	267+58.73	667.22	9.00	667.17
667.00	9.00	267+83.73	667.15	9.00	667.05
666.77	9.00	268+08.73	666.92	9.00	666.77

No extra pavement

Left		Right	
Edge of Pavement	Width	Station	Grade Elev.
670.67	9.00	239+87	670.82
670.58	9.00	240+12	670.49
670.50	9.00	240+37	670.17
670.41	9.00	240+62	669.84
670.33	9.00	240+87	669.52
670.24	9.00	241+12	669.19
670.16	9.00	241+37	668.87
669.99	9.00	241+50	668.70
669.70	9.00	241+75	668.41
669.47	9.00	242+00	668.18
669.31	9.00	242+25	668.02
669.21	9.00	242+43.33	667.92
668.94	9.00	242+73.33	667.89
668.73	9.00	242+99.33	667.92
668.59	9.00	243+24.33	668.02
668.53	9.00	243+43.33	668.20
668.48	9.00	243+73.33	668.39
668.44	9.00	243+99.33	668.59

74.80 Sq. Yd. extra pavement.

Left		Right	
Edge of Pavement	Width	Station	Grade Elev.
669.48	9.00	245+29.32	669.63
669.68	9.00	245+54.32	669.83
669.88	9.00	245+79.32	670.03
670.08	9.00	246+04.32	670.23
670.28	9.00	246+29.32	670.43
670.48	9.00	246+54.32	670.63
670.68	9.00	246+79.32	670.83
670.85	9.00	247+00	671.00
671.02	9.00	247+25	671.17
671.15	9.00	247+50	671.30
671.24	9.00	247+75	671.39
671.19	9.00	248+12.1	671.34
671.09	9.00	248+62.1	671.24
671.10	9.00	248+87.1	671.10
670.75	9.00	249+12.1	670.90
670.57	9.00	249+38.1	670.72

No extra pavement

Left		Right	
Edge of Pavement	Width	Station	Grade Elev.
670.57	9.00	249+35.3	670.72
670.38	9.00	249+58.3	670.53
670.18	9.00	249+83.3	670.33
669.98	9.00	250+08.3	670.13
669.78	9.00	250+33.3	669.93
669.58	9.00	250+58.3	669.73
669.38	9.00	250+83.3	669.53
669.25	9.00	251+00	669.40
669.05	9.00	251+25	669.20
668.85	9.00	251+50	669.00
668.65	9.00	251+75	668.80
668.45	9.00	252+00	668.60
668.25	9.00	252+25	668.40
668.02	9.00	252+54.04	668.17
667.82	9.13	252+79.04	667.97
667.62	9.55	253+04.04	667.77
667.43	10.23	253+29.04	667.58
667.25	11.19	253+54.04	667.40

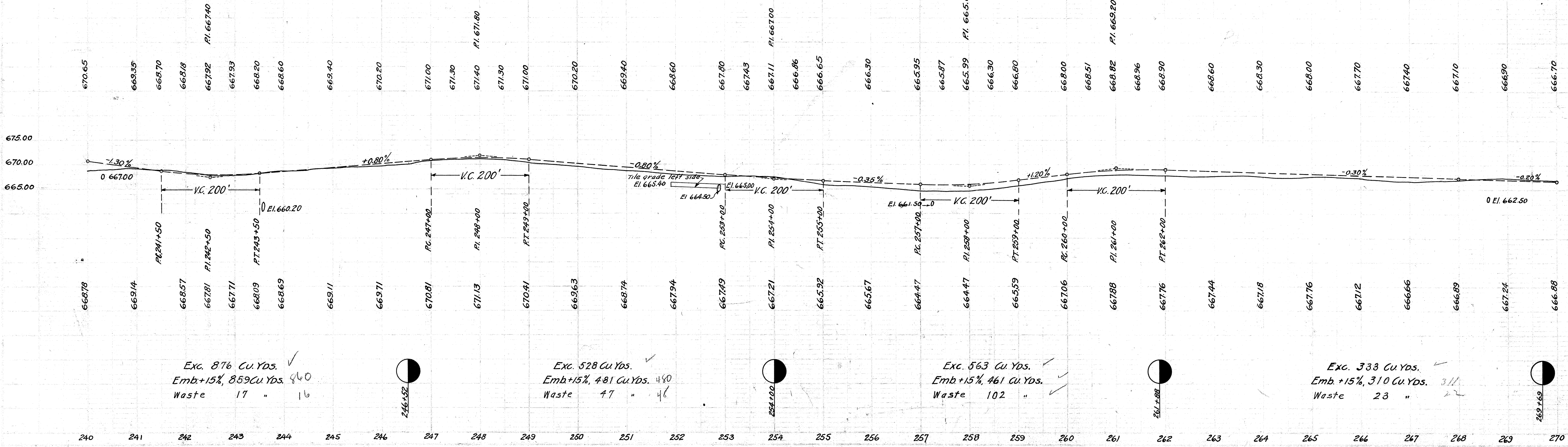
No extra pavement.

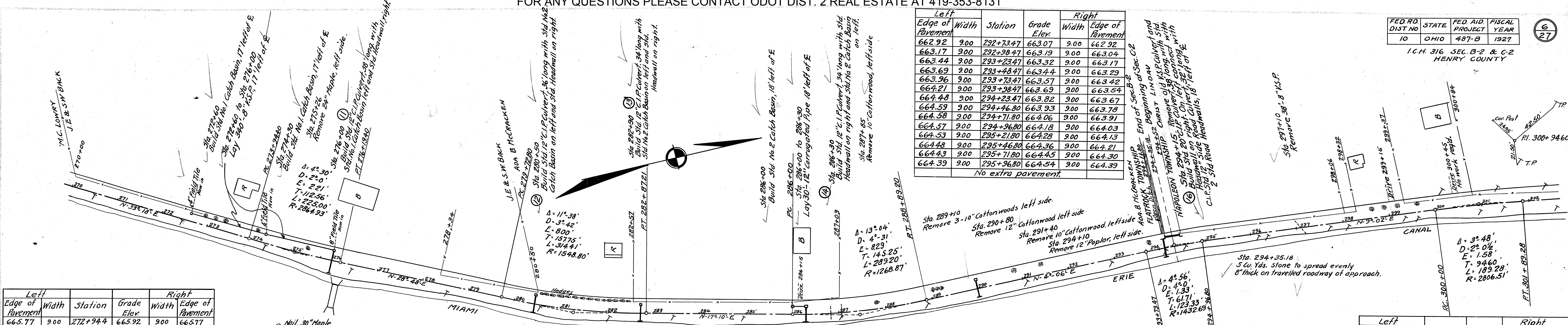
Left		Right	
Edge of Pavement	Width	Station	Grade Elev.
667.25	11.19	253+54.04	667.40
667.05	11.99	253+79.04	667.20
666.94	12.30	254+04.04	667.09
666.82	12.30	254+25	666.97
666.71	12.30	254+50	666.86
666.60	12.30	254+75	666.75
666.50	12.30	255+00	666.65
666.41	12.30	255+25	666.56
666.32	12.30	255+50	666.47
666.23	12.30	255+75	666.38
666.15	12.30	256+00	666.30
666.06	12.30	256+25	666.21
665.97	12.30	256+50	666.12
665.90	12.30	256+75.54	666.05
665.81	11.99	256+96.54	665.96
665.74	11.19	257+21.54	665.89
665.72	10.23	257+46.54	665.87
665.75	9.55	257+71.54	665.90
665.82	9.13	257+96.54	665.97
665.95	9.00	258+21.54	666.10

124.20 Sq. Yd. extra pavement

B.M. Sta. 242+50
Spike in Telephone Pole, 48' left of E
Elev. 668.97

NOTE: Grade Line shown is crown of finished pavement, Type "MIST"
Grade Line is lowered 0.16 Ft. for Type "C"
For grading only, Grade Line shown to be lowered .23 Ft.





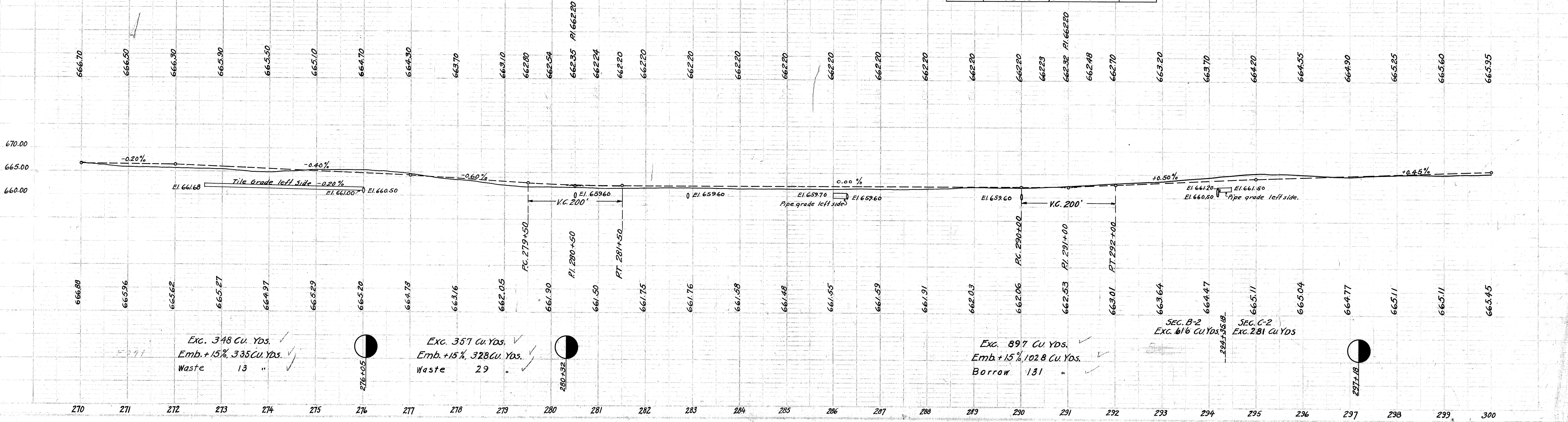
Left Edge of Pavement	Width	Station	Grade Elev.	Right Edge of Pavement
665.77	9.00	272+94.4	665.92	665.77
665.67	9.00	273+19.4	665.82	665.75
665.57	9.00	273+44.4	665.72	665.73
665.47	9.00	273+69.4	665.62	665.71
665.37	9.00	273+94.4	665.52	665.69
665.27	9.00	274+19.4	665.42	665.67
665.17	9.00	274+44.4	665.32	665.65
665.05	9.00	274+75	665.20	665.53
664.95	9.00	275+00	665.10	665.43
664.85	9.00	275+25	665.00	665.33
664.67	9.00	275+69.4	664.82	665.15
664.57	9.00	275+94.4	664.72	664.97
664.47	9.00	276+19.4	664.62	664.72
664.37	9.00	276+44.4	664.52	664.61
664.27	9.00	276+69.4	664.42	664.43
664.17	9.00	276+94.4	664.32	664.25
664.03	9.00	277+19.4	664.20	664.03
No extra pavement				

Left Edge of Pavement	Width	Station	Grade Elev.	Right Edge of Pavement
663.11	9.00	278+72.8	663.26	663.11
662.96	9.00	278+97.8	663.11	663.09
662.81	9.00	279+22.8	662.96	663.07
662.66	9.00	279+47.8	662.81	663.05
662.52	9.00	279+72.8	662.67	663.02
662.39	9.00	279+97.8	662.54	663.02
662.29	9.00	280+22.8	662.44	663.00
662.20	9.00	280+50	662.35	662.98
662.13	9.00	280+75	662.28	662.91
662.09	9.00	281+00	662.24	662.87
662.06	9.00	281+25	662.21	662.84
662.05	9.00	281+50	662.20	662.83
662.05	9.00	281+75	662.20	662.83
662.05	9.00	282+00	662.20	662.83
662.05	9.00	282+25	662.20	662.83
662.05	9.00	282+50	662.20	662.83
662.05	9.00	282+75	662.20	662.83
662.05	9.00	283+00	662.20	662.83
662.05	9.00	283+25	662.20	662.83
662.05	9.00	283+50	662.20	662.83
662.05	9.00	283+75	662.20	662.83
662.05	9.00	284+00	662.20	662.83
No extra pavement				

Left Edge of Pavement	Width	Station	Grade Elev.	Right Edge of Pavement
662.05	9.00	285+00	662.20	662.05
662.05	9.00	285+25	662.20	662.05
662.05	9.00	285+50	662.20	662.35
662.05	9.00	285+75	662.20	662.50
662.05	9.00	286+00	662.20	662.65
662.05	9.00	286+25	662.20	662.80
662.05	9.00	286+50	662.20	662.95
662.05	9.00	286+75	662.20	662.95
662.05	9.00	287+00	662.20	662.95
662.05	9.00	287+25	662.20	662.95
662.05	9.00	287+50	662.20	662.95
662.05	9.00	287+75	662.20	662.95
662.05	9.00	288+00	662.20	662.95
662.05	9.00	288+25	662.20	662.95
662.05	9.00	288+50	662.20	662.95
662.05	9.00	288+75	662.20	662.80
662.05	9.00	289+00	662.20	662.65
662.05	9.00	289+25	662.20	662.50
662.05	9.00	289+50	662.20	662.35
662.05	9.00	289+75	662.20	662.20
No extra pavement				

Left Edge of Pavement	Width	Station	Grade Elev.	Right Edge of Pavement
665.45	9.00	299+00	665.60	665.45
665.62	9.00	299+25	665.69	665.54
665.79	9.00	299+50	665.78	665.63
665.96	9.00	299+75	665.87	665.72
666.12	9.00	300+00	665.95	665.80
666.28	9.00	300+25	666.03	665.88
666.43	9.00	300+50	666.10	665.95
666.48	9.00	300+75	666.15	666.00
666.53	9.00	301+00	666.20	666.05
666.56	9.00	301+25	666.23	666.08
666.52	9.00	301+50	666.24	666.09
666.46	9.00	301+75	666.26	666.11
666.37	9.00	301+99.28	666.25	666.10
666.28	9.00	302+14.28	666.24	666.09
666.19	9.00	302+39.28	666.23	666.08
666.10	9.00	302+64.28	666.22	666.07
666.06	9.00	302+72.24	666.21	666.06
No extra pavement				

NOTE: Grade Line shown is crown of finished pavement, Type "M" (S) Grade Line is lowered 0.16 Ft. for Type "C" For grading only, Grade Line shown to be lowered .23 Ft.



Left				Right			
Edge of Pavement	Width	Station	Grade Elev.	Width	Edge of Pavement	Station	Grade Elev.
663.51	9.00	317+68.8	663.66	9.00	663.51	317+68.8	663.66
663.58	9.00	317+93.8	663.73	9.00	663.65	317+93.8	663.80
663.67	9.00	318+18.8	663.82	9.00	663.81	318+18.8	663.90
663.75	9.00	318+43.8	663.90	9.00	663.96	318+43.8	664.04
663.84	9.00	318+68.8	663.99	9.00	664.12	318+68.8	664.20
663.93	9.00	318+93.8	664.08	9.00	664.28	318+93.8	664.36
664.02	9.00	319+18.8	664.17	9.00	664.44	319+18.8	664.52
664.08	9.00	319+43.8	664.23	9.00	664.50	319+43.8	664.58
664.13	9.00	320+00	664.28	9.00	664.55	320+00	664.63
664.12	9.00	320+25	664.27	9.00	664.54	320+25	664.62
664.08	9.00	320+52.13	664.23	9.00	664.50	320+52.13	664.58
664.02	9.00	320+77.13	664.17	9.00	664.37	320+77.13	664.45
663.94	9.00	321+02.13	664.09	9.00	664.22	321+02.13	664.30
663.86	9.00	321+27.13	664.01	9.00	664.07	321+27.13	664.15
663.77	9.00	321+52.13	663.92	9.00	663.91	321+52.13	664.00
663.70	9.00	321+77.20	663.85	9.00	663.78	321+77.20	663.86

No extra pavement

Left				Right			
Edge of Pavement	Width	Station	Grade Elev.	Width	Edge of Pavement	Station	Grade Elev.
665.62	9.00	309+22.7	665.77	9.00	665.62	309+22.7	665.77
665.58	9.00	309+47.7	665.73	9.00	665.68	309+47.7	665.83
665.54	9.00	309+72.7	665.69	9.00	665.74	309+72.7	665.89
665.51	9.00	309+97.7	665.66	9.00	665.81	309+97.7	665.95
665.47	9.00	310+22.7	665.62	9.00	665.87	310+22.7	666.01
665.43	9.00	310+47.7	665.58	9.00	665.93	310+47.7	666.07
665.39	9.00	310+72.7	665.54	9.00	665.99	310+72.7	666.13
665.35	9.00	311+00	665.50	9.00	666.05	311+00	666.19
665.28	9.00	311+50	665.43	9.00	666.08	311+50	666.22
665.20	9.00	312+00	665.35	9.00	666.00	312+00	666.14
665.13	9.00	312+50	665.28	9.00	665.93	312+50	666.07
665.05	9.00	313+00	665.20	9.00	665.85	313+00	665.99
665.00	9.00	313+50	665.15	9.00	665.80	313+50	665.94
664.89	9.00	313+70.13	665.04	9.00	665.73	313+70.13	665.87
664.82	9.00	313+95.13	664.97	9.00	665.66	313+95.13	665.80
664.73	9.00	314+20.13	664.88	9.00	665.57	314+20.13	665.71
664.62	9.00	314+45.13	664.77	9.00	665.42	314+45.13	665.56
664.50	9.00	314+70.13	664.65	9.00	665.30	314+70.13	665.44
664.38	9.00	314+95.13	664.53	9.00	665.18	314+95.13	665.32
664.24	9.00	315+20.13	664.39	9.00	665.04	315+20.13	665.18

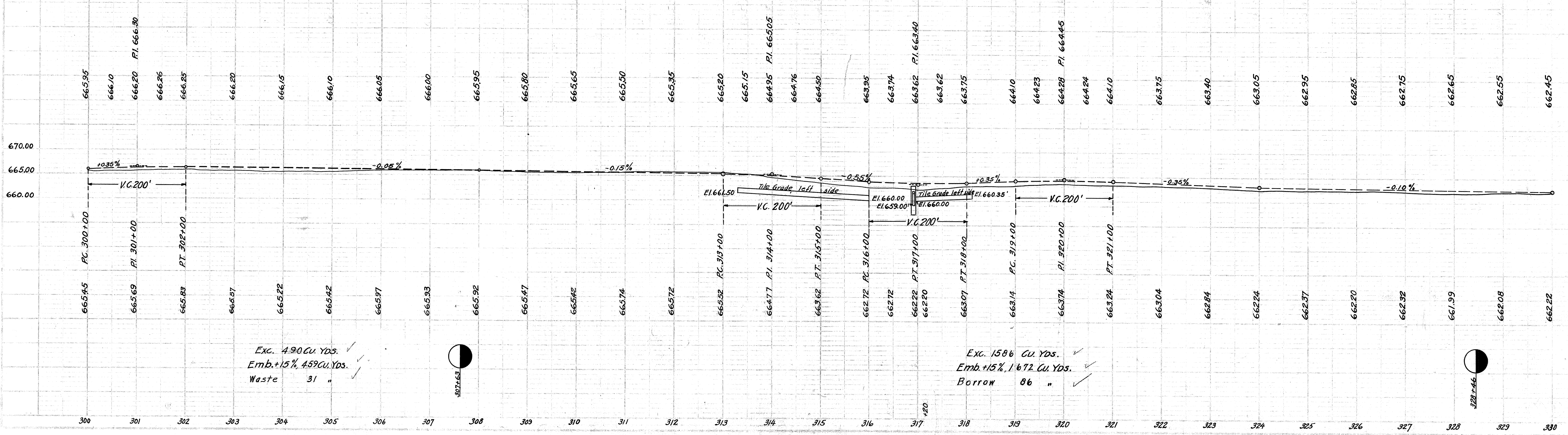
No extra pavement

Left				Right			
Edge of Pavement	Width	Station	Grade Elev.	Width	Edge of Pavement	Station	Grade Elev.
663.70	9.00	321+72.20	663.85	9.00	663.78	321+72.20	663.93
663.63	9.00	321+97.20	663.78	9.00	663.80	321+97.20	663.88
663.54	9.00	322+17.20	663.69	9.00	663.80	322+17.20	663.88
663.45	9.00	322+42.20	663.60	9.00	663.79	322+42.20	663.87
663.36	9.00	322+67.20	663.51	9.00	663.78	322+67.20	663.86
663.28	9.00	322+92.20	663.43	9.00	663.77	322+92.20	663.85
663.25	9.00	323+00	663.40	9.00	663.76	323+00	663.84
663.08	9.00	323+50	663.23	9.00	663.59	323+50	663.67
662.90	9.00	324+00	663.05	9.00	663.41	324+00	663.49
662.85	9.00	324+50	663.00	9.00	663.36	324+50	663.44
662.80	9.00	325+00	662.95	9.00	663.31	325+00	663.39
662.75	9.00	325+50	662.90	9.00	663.26	325+50	663.34
662.74	9.00	325+61.7	662.89	9.00	663.25	325+61.7	663.33
662.71	9.00	325+86.7	662.86	9.00	663.13	325+86.7	663.21
662.69	9.00	326+11.7	662.84	9.00	663.03	326+11.7	663.11
662.66	9.00	326+36.7	662.81	9.00	662.92	326+36.7	663.00
662.64	9.00	326+61.7	662.79	9.00	662.81	326+61.7	662.89

No extra pavement

Left				Right			
Edge of Pavement	Width	Station	Grade Elev.	Width	Edge of Pavement	Station	Grade Elev.
666.07	9.00	302+72.24	666.22	9.00	666.07	302+72.24	666.22
666.06	9.00	302+80.24	666.21	9.00	666.08	302+80.24	666.23
666.05	9.00	303+05.24	666.20	9.00	666.13	303+05.24	666.28
666.03	9.00	303+30.24	666.18	9.00	666.17	303+30.24	666.32
666.02	9.00	303+55.24	666.17	9.00	666.22	303+55.24	666.37
666.01	9.00	303+80.24	666.16	9.00	666.27	303+80.24	666.42
666.00	9.00	304+05.24	666.15	9.00	666.32	304+05.24	666.47
665.99	9.00	304+22.24	666.14	9.00	666.35	304+22.24	666.50
665.97	9.00	304+50	666.12	9.00	666.33	304+50	666.48
665.95	9.00	305+00	666.10	9.00	666.31	305+00	666.46
665.92	9.00	305+50	666.07	9.00	666.28	305+50	666.43
665.90	9.00	306+00	666.05	9.00	666.26	306+00	666.41
665.87	9.00	306+150	666.02	9.00	666.23	306+150	666.38
665.85	9.00	307+00	666.00	9.00	666.21	307+00	666.36
665.84	9.00	307+21.55	665.99	9.00	666.20	307+21.55	666.35
665.83	9.00	307+46.55	665.98	9.00	666.13	307+46.55	666.28
665.82	9.00	307+71.55	665.97	9.00	666.06	307+71.55	666.21
665.80	9.00	307+96.55	665.95	9.00	666.08	307+96.55	666.23
665.77	9.00	308+21.55	665.92	9.00	666.09	308+21.55	666.24
665.73	9.00	308+46.55	665.88	9.00	666.05	308+46.55	666.20
665.69	9.00	308+71.55	665.84	9.00	666.01	308+71.55	666.16

No extra pavement

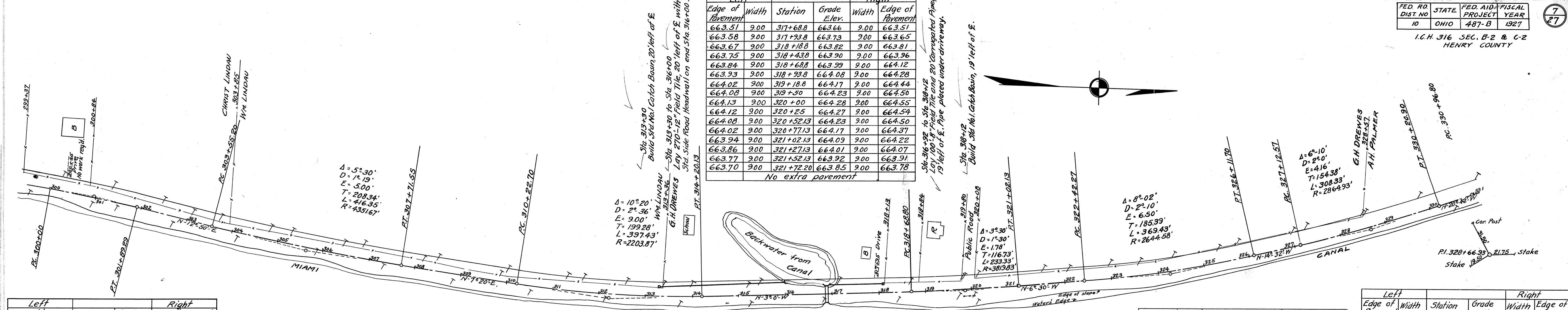


NOTE: Grade Line shown is crown of finished pavement, Type "M(ST)"
Grade Line is lowered 0.16 Ft. for Type "C"
For grading only, grade line shown to be lowered .23 Ft.

B.M. Sta. 315+55
Spike in Oak, Left side
Elev. 664.04

Sta. 316+90
Remove old 2" concrete curb and replace with 3" x 6" concrete curb
35 Ft. long, 8" tile to run thru wing.

Sta. 319+94
5 Cu. Yds. of stone to be spread evenly 8" thick on travelled roadway of approach.



Left Edge of Pavement	Width	Station	Grade Elev.	Right Width	Edge of Pavement
662.27	9.00	330+58.85	662.42	9.00	662.47
662.26	9.00	330+71.8	662.41	9.00	662.44
662.25	9.00	330+96.8	662.40	9.00	662.49
662.24	9.00	331+21.8	662.39	9.00	662.54
662.23	9.00	331+46.8	662.38	9.00	662.59
662.21	9.00	331+71.5	662.36	9.00	662.57
662.20	9.00	331+99.22	662.35	9.00	662.56
662.19	9.13	332+24.22	662.34	9.00	662.55
662.18	9.54	332+49.22	662.33	9.00	662.54
662.17	10.21	332+74.22	662.32	9.00	662.50
662.15	11.15	332+99.22	662.30	9.00	663.05

No extra pavement

Left Edge of Pavement	Width	Station	Grade Elev.	Right Width	Edge of Pavement
668.25	9.00	347+40.07	667.98	9.00	667.83
668.55	9.00	347+65.07	668.22	9.00	668.07
668.85	9.00	347+90.07	668.46	9.00	668.31
668.94	9.00	348+1.00	668.55	9.00	668.40
669.41	9.00	348+5.00	669.02	9.00	668.87
669.89	9.00	349+1.00	669.50	9.00	669.35
670.36	9.00	349+5.00	669.97	9.00	669.82
670.84	9.00	350+0.00	670.45	9.00	670.30
671.23	9.00	350+5.00	670.84	9.00	670.69
671.35	9.00	350+6.795	670.96	9.00	670.81
671.35	9.00	350+92.95	671.05	9.00	670.90
671.35	9.00	351+17.95	671.14	9.00	670.99
671.29	9.00	351+42.95	671.17	9.00	671.02
671.20	9.00	351+67.95	671.17	9.00	671.02
671.06	9.00	351+92.95	671.12	9.00	670.97
670.90	9.00	352+17.95	671.05	9.00	670.90

No extra pavement

Left Edge of Pavement	Width	Station	Grade Elev.	Right Width	Edge of Pavement
662.15	11.15	332+99.22	662.30	9.00	663.05
662.14	11.94	333+24.22	662.29	9.00	663.31
662.13	12.25	333+49.22	662.28	9.00	663.57
662.11	12.25	333+75	662.26	9.00	663.55
662.10	12.25	334+1.00	662.25	9.00	663.54
662.08	12.25	334+40.74	662.23	9.00	663.52
662.08	12.25	334+41.88	662.23	9.00	663.51
662.07	12.25	334+66.88	662.22	9.00	663.26
662.05	11.94	334+91.88	662.19	9.00	663.00
662.04	11.15	335+16.88	662.19	9.00	662.75
662.03	10.21	335+41.88	662.18	9.00	662.50
662.02	9.60	335+66.88	662.17	9.00	662.27
662.02	9.54	335+66.88	662.17	9.00	662.25
662.01	9.17	335+89.60	662.16	9.11	662.17
662.01	9.15	335+90.74	662.16	9.13	662.01

76.74 sq. yd. extra pavement

Left Edge of Pavement	Width	Station	Grade Elev.	Right Width	Edge of Pavement
662.01	9.15	335+90.74	662.16	9.13	662.01
662.01	9.13	335+91.88	662.15	9.14	662.00
662.20	9.01	336+14.88	662.14	9.44	661.99
662.22	9.00	336+16.88	662.14	9.49	661.99
662.41	9.00	336+39.6	662.13	9.98	661.98
662.62	9.00	336+64.6	662.12	10.76	661.97
662.83	9.00	336+89.6	662.11	11.46	661.96
663.03	9.00	337+14.6	662.09	11.75	661.94
663.24	9.00	337+39.6	662.08	11.75	661.93
663.25	9.00	337+40.74	662.08	11.75	661.93
663.25	9.00	337+75	662.06	11.75	661.91
663.24	9.00	338+0.00	662.05	11.75	661.90
663.23	9.00	338+25	662.04	11.75	661.89
663.22	9.00	338+49.6	662.03	11.75	661.88
662.87	9.00	338+74.6	662.02	11.46	661.87
662.52	9.00	338+99.6	662.00	10.76	661.85
662.17	9.00	339+24.6	661.99	9.98	661.84
662.05	9.00	339+49.6	661.98	9.44	661.83
661.93	9.00	339+74.6	661.96	9.11	661.81
661.80	9.00	339+99.6	661.95	9.00	661.80

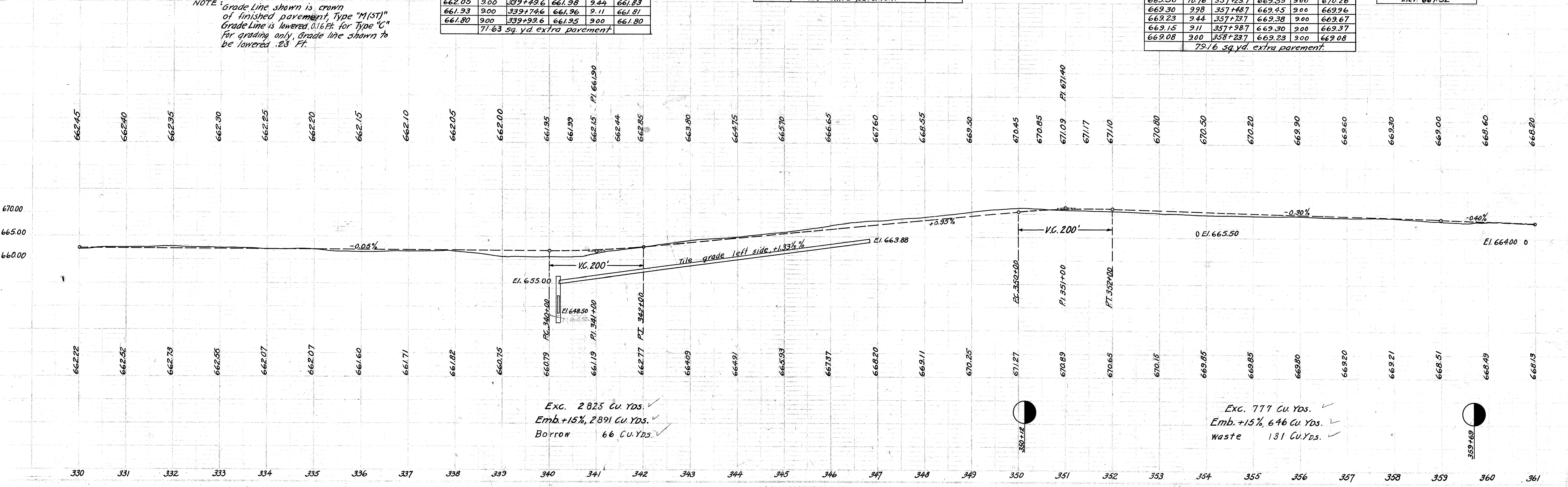
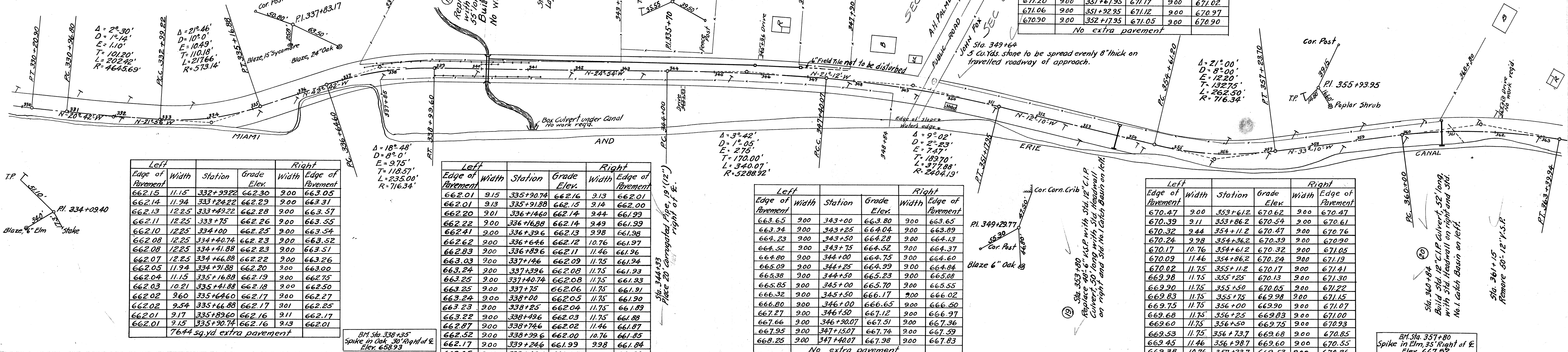
71.63 sq. yd. extra pavement

Left Edge of Pavement	Width	Station	Grade Elev.	Right Width	Edge of Pavement
663.65	9.00	343+0.00	663.80	9.00	663.65
663.94	9.00	343+25	664.04	9.00	663.89
664.23	9.00	343+50	664.28	9.00	664.13
664.52	9.00	343+75	664.52	9.00	664.37
664.80	9.00	344+0.00	664.75	9.00	664.60
665.09	9.00	344+25	664.99	9.00	664.84
665.38	9.00	344+50	665.23	9.00	665.08
665.85	9.00	345+0.00	665.70	9.00	665.55
666.32	9.00	345+50	666.17	9.00	666.02
666.80	9.00	346+0.00	666.65	9.00	666.50
667.27	9.00	346+50	667.12	9.00	666.97
667.66	9.00	346+90.07	667.51	9.00	667.36
667.95	9.00	347+15.07	667.74	9.00	667.59
668.25	9.00	347+40.07	667.98	9.00	667.83

No extra pavement

Left Edge of Pavement	Width	Station	Grade Elev.	Right Width	Edge of Pavement
670.47	9.00	353+61.2	670.62	9.00	670.47
670.39	9.11	353+86.2	670.54	9.00	670.61
670.32	9.44	354+11.2	670.47	9.00	670.76
670.24	9.98	354+36.2	670.39	9.00	670.90
670.17	10.76	354+61.2	670.32	9.00	671.05
670.09	11.46	354+86.2	670.24	9.00	671.19
670.02	11.75	355+11.2	670.17	9.00	671.41
669.98	11.75	355+25	670.13	9.00	671.30
669.90	11.75	355+50	670.05	9.00	671.22
669.83	11.75	355+75	669.98	9.00	671.15
669.75	11.75	356+0.00	669.90	9.00	671.07
669.68	11.75	356+25	669.83	9.00	671.00
669.60	11.75	356+50	669.75	9.00	670.93
669.53	11.75	356+75.7	669.68	9.00	670.85
669.45	11.46	356+98.7	669.60	9.00	670.55
669.38	10.76	357+23.7	669.53	9.00	670.26
669.30	9.98	357+48.7	669.45	9.00	669.96
669.23	9.44	357+73.7	669.38	9.00	669.67
669.15	9.11	357+98.7	669.30	9.00	669.37
669.08	9.00	358+23.7	669.23	9.00	669.08

79.16 sq. yd. extra pavement



NOTE: Grade Line shown is crown of finished pavement, Type "M(ST)" Grade Line is lowered 0.16 Ft. for Type "C" for grading only, Grade line shown to be lowered .23 Ft.

BM Sta. 338+35 Spike in Oak, 30' Right of E. Elev. 658.93

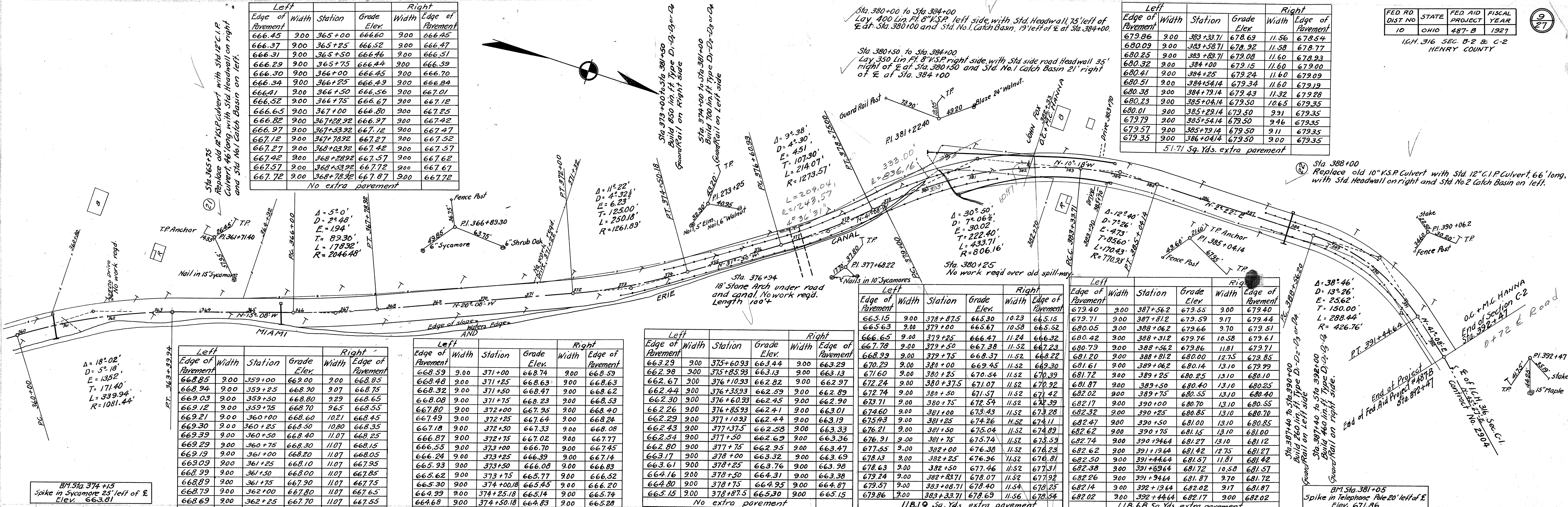
BM Sta. 357+80 Spike in Elm, 35' Right of E. Elev. 667.92

Left				Right			
Edge of Pavement	Width	Station	Grade Elev.	Width	Edge of Pavement	Station	Grade Elev.
666.45	9.00	365+00	666.60	9.00	666.45		
666.37	9.00	365+25	666.52	9.00	666.47		
666.31	9.00	365+50	666.46	9.00	666.51		
666.29	9.00	365+75	666.44	9.00	666.59		
666.30	9.00	366+00	666.45	9.00	666.70		
666.34	9.00	366+25	666.49	9.00	666.84		
666.41	9.00	366+50	666.56	9.00	667.01		
666.52	9.00	366+75	666.67	9.00	667.12		
666.65	9.00	367+00	666.80	9.00	667.25		
666.82	9.00	367+25	666.97	9.00	667.42		
666.97	9.00	367+50	667.12	9.00	667.47		
667.12	9.00	367+75	667.27	9.00	667.52		
667.27	9.00	368+00	667.42	9.00	667.57		
667.42	9.00	368+25	667.57	9.00	667.62		
667.57	9.00	368+50	667.72	9.00	667.67		
667.72	9.00	368+75	667.87	9.00	667.72		

No extra pavement

Left				Right			
Edge of Pavement	Width	Station	Grade Elev.	Width	Edge of Pavement	Station	Grade Elev.
679.86	9.00	383+33.71	678.69	11.56	678.54		
680.09	9.00	383+38.71	678.92	11.58	678.77		
680.25	9.00	383+83.71	679.08	11.60	678.93		
680.32	9.00	384+00	679.15	11.60	679.00		
680.41	9.00	384+25	679.24	11.60	679.09		
680.51	9.00	384+54.14	679.34	11.60	679.19		
680.38	9.00	384+79.14	679.43	11.32	679.28		
680.23	9.00	385+04.14	679.50	10.65	679.35		
680.01	9.00	385+29.14	679.50	9.91	679.35		
679.79	9.00	385+54.14	679.50	9.46	679.35		
679.57	9.00	385+79.14	679.50	9.11	679.35		
679.35	9.00	386+04.14	679.50	9.00	679.35		

51.71 Sq. Yds. extra pavement



Left				Right			
Edge of Pavement	Width	Station	Grade Elev.	Width	Edge of Pavement	Station	Grade Elev.
668.85	9.00	359+00	668.90	9.00	668.85		
668.94	9.00	359+25	668.90	9.07	668.75		
669.03	9.00	359+50	668.80	9.29	668.65		
669.12	9.00	359+75	668.70	9.65	668.55		
669.21	9.00	360+00	668.60	10.21	668.45		
669.30	9.00	360+25	668.50	10.80	668.35		
669.39	9.00	360+50	668.40	11.07	668.25		
669.29	9.00	360+75	668.30	11.07	668.15		
669.19	9.00	361+00	668.20	11.07	668.05		
669.09	9.00	361+25	668.10	11.07	667.95		
668.99	9.00	361+50	668.00	11.07	667.85		
668.89	9.00	361+75	667.90	11.07	667.75		
668.79	9.00	362+00	667.80	11.07	667.65		
668.69	9.00	362+25	667.70	11.07	667.55		
668.59	9.00	362+50	667.60	11.07	667.45		
668.49	9.00	362+75	667.50	11.07	667.35		
668.43	9.00	362+89.94	667.44	11.07	667.29		
668.14	9.00	363+14.94	667.34	10.80	667.19		
667.85	9.00	363+39.94	667.24	10.21	667.09		
667.56	9.00	363+64.94	667.14	9.65	666.99		
667.27	9.00	363+89.94	667.04	9.29	666.89		
667.04	9.00	364+14.94	667.00	9.07	666.85		
666.85	9.00	364+39.94	667.00	9.00	666.85		

81.62 Sq. Yds. extra pavement

Left				Right			
Edge of Pavement	Width	Station	Grade Elev.	Width	Edge of Pavement	Station	Grade Elev.
668.59	9.00	371+00	668.74	9.00	668.59		
668.48	9.00	371+25	668.63	9.00	668.63		
668.32	9.00	371+50	668.47	9.00	668.62		
668.08	9.00	371+75	668.23	9.00	668.53		
667.80	9.00	372+00	667.95	9.00	668.40		
667.49	9.00	372+25	667.64	9.00	668.24		
667.18	9.00	372+50	667.33	9.00	668.08		
666.87	9.00	372+75	667.02	9.00	667.77		
666.55	9.00	373+00	666.70	9.00	667.45		
666.24	9.00	373+25	666.39	9.00	667.14		
665.93	9.00	373+50	666.08	9.00	666.83		
665.62	9.00	373+75	665.77	9.00	666.52		
665.30	9.00	374+00.18	665.45	9.00	666.20		
664.99	9.00	374+25.18	665.14	9.00	665.74		
664.68	9.00	374+50.18	664.83	9.00	665.28		
664.37	9.00	374+75.18	664.52	9.00	664.82		
664.05	9.00	375+00.18	664.20	9.00	664.35		
663.74	9.00	375+25.18	663.89	9.00	663.89		
663.43	9.00	375+50.18	663.58	9.00	663.43		

No extra pavement

Left				Right			
Edge of Pavement	Width	Station	Grade Elev.	Width	Edge of Pavement	Station	Grade Elev.
663.29	9.00	375+60.93	663.44	9.00	663.29		
662.98	9.00	375+85.93	663.13	9.00	663.13		
662.67	9.00	376+10.93	662.82	9.00	662.97		
662.44	9.00	376+35.93	662.39	9.00	662.89		
662.26	9.00	376+60.93	662.41	9.00	663.01		
662.29	9.00	377+10.93	662.44	9.00	663.19		
662.43	9.00	377+35.93	662.58	9.00	663.33		
662.54	9.00	377+60.93	662.69	9.00	663.36		
662.80	9.00	377+85.93	662.95	9.00	663.47		
663.17	9.00	378+00	663.32	9.00	663.69		
663.61	9.00	378+25	663.76	9.00	663.98		
664.16	9.00	378+50	664.31	9.00	664.38		
664.80	9.00	378+75	664.95	9.00	664.87		
665.15	9.00	378+87.5	665.30	9.00	665.15		

No extra pavement

Left				Right			
Edge of Pavement	Width	Station	Grade Elev.	Width	Edge of Pavement	Station	Grade Elev.
665.15	9.00	378+87.5	665.30	10.23	665.15		
665.63	9.00	379+00	665.67	10.58	665.52		
666.65	9.00	379+25	666.47	11.24	666.32		
667.78	9.00	379+50	667.38	11.52	667.23		
668.99	9.00	379+75	668.37	11.52	668.22		
670.29	9.00	380+00	669.45	11.52	669.30		
671.60	9.00	380+25	670.54	11.52	670.39		
672.24	9.00	380+37.5	671.07	11.52	670.92		
672.74	9.00	380+50	671.57	11.52	671.42		
673.71	9.00	380+75	672.54	11.52	672.39		
674.60	9.00	381+00	673.43	11.52	673.28		
675.43	9.00	381+25	674.26	11.52	674.11		
676.21	9.00	381+50	675.04	11.52	674.89		
676.91	9.00	381+75	675.74	11.52	675.59		
677.55	9.00	382+00	676.38	11.52	676.23		
678.13	9.00	382+25	676.96	11.52	676.81		
678.63	9.00	382+50	677.46	11.52	677.31		
679.24	9.00	382+83.71	678.07	11.52	677.92		
679.57	9.00	383+08.71	678.40	11.54	678.25		
679.86	9.00	383+33.71	678.69	11.56	678.54		

118.19 Sq. Yds. extra pavement

Left				Right			
Edge of Pavement	Width	Station	Grade Elev.	Width	Edge of Pavement	Station	Grade Elev.
679.40	9.00	387+56.2	679.55	9.00	679.40		
679.71	9.00	387+81.2	679.59	9.17	679.44		
680.05	9.00	388+06.2	679.66	9.70	679.51		
680.42	9.00	388+31.2	679.76	10.58	679.61		
680.79	9.00	388+56.2	679.86	11.81	679.71		
681.20	9.00	388+81.2	680.00	12.75	679.85		
681.61	9.00	389+06.2	680.14	13.10	679.99		
681.72	9.00	389+25	680.25	13.10	680.10		
681.87	9.00	389+50	680.40	13.10	680.25		
682.02	9.00	389+75	680.55	13.10	680.40		
682.17	9.00	390+00	680.70	13.10	680.55		
682.32	9.00	390+25	680.85	13.10	680.70		
682.47	9.00	390+50	681.00	13.10	680.85		
682.62	9.00	390+75	681.15	13.10	681.00		
682.74	9.00	390+94.6	681.27	13.10	681.12		
682.62	9.00	391+19.64	681.42	12.75	681.27		
682.50	9.00	391+44.64	681.57	11.81	681.42		
682.38	9.00	391+69.64	681.72	10.58	681.57		
682.26	9.00	391+94.64	681.87	9.70	681.72		
682.14	9.00	392+19.64	682.02	9.17	681.87		
682.02	9.00	392+44.64	682.17	9.00	682.02		

118.68 Sq. Yds. extra pavement

