

HEN-424-6.96

TOWNSHIP 5 NORTH, RANGE 6 EAST

SECTION 27, NAPOLEON TOWNSHIP

CITY OF NAPOLEON, HENRY COUNTY, OHIO

PROJECT CONTROL

PROJECT CONTROL WAS DERIVED FROM G.P.S. OBSERVATIONS AS PERFORMED IN MAY OF 2010, AND ARE RELATIVE TO OHIO STATE PLANE COORDINATES (GROUND, NORTH ZONE NAD 83 (CORS96)).

PROJECT ADJUSTMENT FACTORS = 0.99992895 (GROUND TO GRID)
1.00007106 (GRID TO GROUND)

BASIS OF BEARINGS

THE BASIS OF BEARINGS ON THESE PLANS ARE BASED ON G.P.S. OBSERVATIONS AS PERFORMED IN MAY OF 2010, AND ARE RELATIVE TO OHIO STATE PLANE COORDINATES (GROUND, NORTH ZONE NAD 83 (CORS96)).

O.D.O.T. PLANS REFERENCED

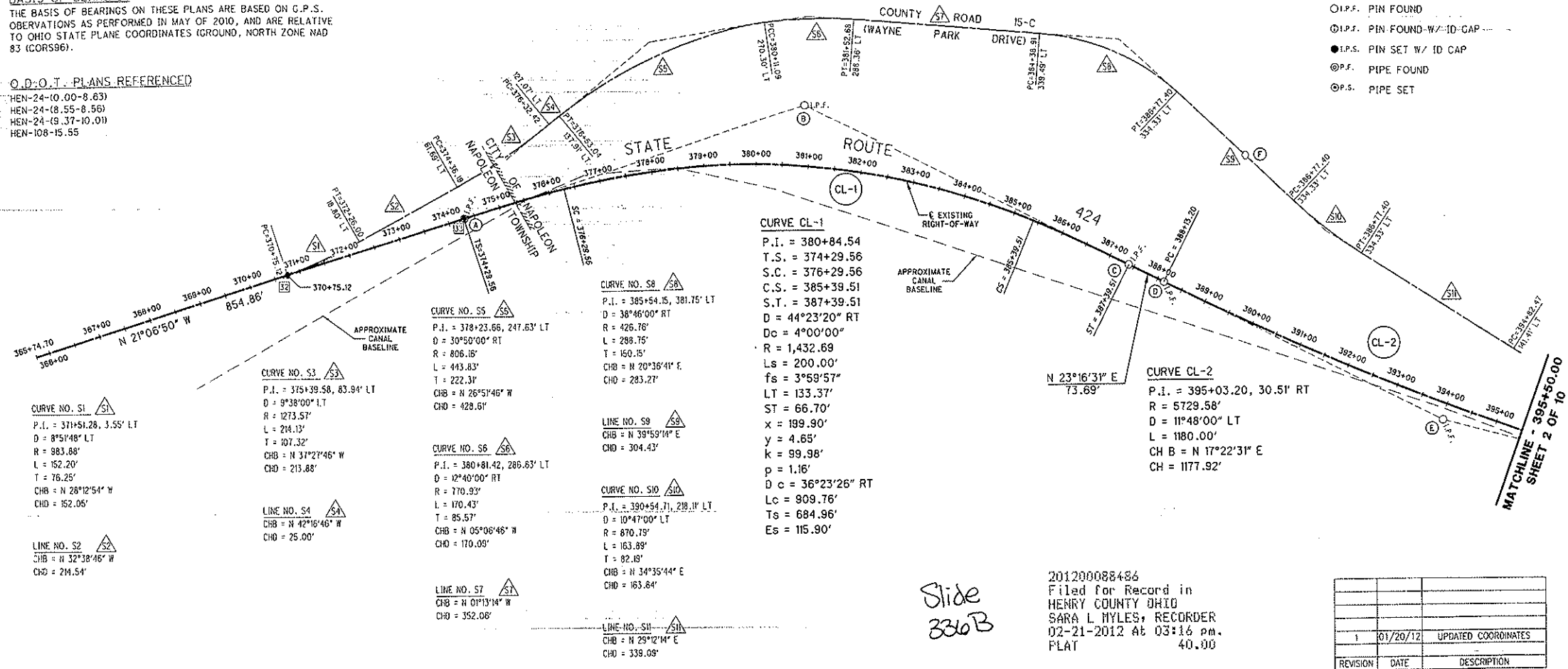
- HEN-24-10.00-8.63
- HEN-24-18.55-8.56
- HEN-24-19.37-10.01
- HEN-108-15.55

MONUMENT LEGEND

- EXISTING R/W MONUMENT BOX
- EXISTING CONCRETE POST
- EXISTING CONCRETE MONUMENT
- STONE FOUND
- SPIKE FOUND
- 3/8" X 4" MAGNETIZED SPIKE
- I.P.F. PIN FOUND
- I.P.F. PIN FOUND W/ ID-CAP
- I.P.S. PIN SET W/ ID CAP
- P.F. PIPE FOUND
- P.S. PIPE SET



P.L.O. NO. 88197
D.J.H. REVIEWER
C.M.C. COUNTY RECORDER



CURVE CL-1
 P.I. = 380+84.54
 T.S. = 374+29.56
 S.C. = 376+29.56
 C.S. = 385+39.51
 S.T. = 387+39.51
 D = 44°23'20" RT
 Dc = 4°00'00"
 R = 1,432.69
 Ls = 200.00'
 fs = 3°59'57"
 LT = 133.37'
 ST = 66.70'
 x = 199.90'
 y = 4.65'
 k = 99.98'
 p = 1.16'
 Dc = 36°23'26" RT
 Lc = 909.76'
 Ts = 684.96'
 Es = 115.90'

CURVE CL-2
 P.I. = 395+03.20, 30.51 RT
 R = 5729.58'
 D = 11°48'00" LT
 L = 1180.00'
 CH B = N 17°22'31" E
 CH = 1177.92'

CURVE NO. S1
 P.I. = 371+51.28, 3.55' LT
 D = 8°54'48" LT
 R = 983.88'
 L = 152.20'
 T = 76.25'
 CHB = N 28°12'54" W
 CHD = 152.05'

CURVE NO. S3
 P.I. = 375+39.58, 83.94' LT
 D = 9°38'00" LT
 R = 1273.57'
 L = 214.13'
 T = 107.32'
 CHB = N 31°21'46" W
 CHD = 213.88'

CURVE NO. S5
 P.I. = 378+23.66, 247.63' LT
 D = 30°50'00" RT
 R = 806.16'
 L = 443.83'
 T = 222.31'
 CHB = N 26°51'46" W
 CHD = 428.61'

CURVE NO. S8
 P.I. = 385+54.15, 381.75' LT
 D = 38°46'00" RT
 R = 426.76'
 L = 289.75'
 T = 150.15'
 CHB = N 20°36'41" E
 CHD = 283.27'

LINE NO. S9
 CHB = N 39°59'14" E
 CHD = 304.43'

CURVE NO. S10
 P.I. = 390+54.71, 218.11' LT
 D = 10°47'00" LT
 R = 870.79'
 L = 163.89'
 T = 82.18'
 CHB = N 34°35'44" E
 CHD = 163.84'

LINE NO. S11
 CHB = N 25°12'14" E
 CHD = 339.09'

FOUND MONUMENTATION

REF #	STATION E R/W	OFFSET	DESCRIPTION	STATE PLANE COORDINATES (GROUND)	
				NORTHING	EASTING
(A)	374+30.38	0.05' LT	1" ROD FOUND - USED	622110.55	1514783.94
(B)	380+84.54	115.90' LT	5/8" REBAR FOUND (P.T.) - USED & HELD	622748.78	1514537.54
(C)	387+39.17	0.06' LT	3/4" ROD FOUND - USED	623377.71	1514808.01
(D)	388+13.34	0.01' RT	1" ROD FOUND - USED	623445.82	1514837.38
(E)	394+03.20	30.51' RT	5/8" REBAR FOUND (P.T.) - USED & HELD	623989.61	1515071.29
(F)	388+46.83	283.05' LT	SPIKE FOUND - USED	623586.94	1514589.85

MONUMENTATION TO BE SET

REF #	STATION E R/W	OFFSET	DESCRIPTION	STATE PLANE COORDINATES (GROUND)	
				NORTHING	EASTING
(G)	370+75.12		3/8" X 4" MAGNETIZED SPIKE (P.T.)	621779.15	1514911.96
(H)	374+29.56		3/8" X 4" MAGNETIZED SPIKE (P.T.)	622109.80	1514784.28

Slide 336B

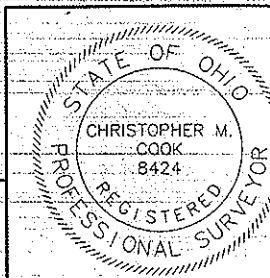
201200088486
 Filed for Record in
 HENRY COUNTY OHIO
 SARA L. HYLES, RECORDER
 02-21-2012 At 03:16 pm.
 PLAT 40.00

REVISION	DATE	DESCRIPTION
1	01/20/12	UPDATED COORDINATES

I HEREBY CERTIFY THAT THIS PLAT IS A TRUE DELINEATION OF A SURVEY MADE FOR THE OHIO DEPARTMENT OF TRANSPORTATION IN FEBRUARY 2011 BY COLUMBUS ENGINEERING CONSULTANTS, INC. AND IS BASED UPON A FIELD SURVEY OF CENTERLINE AND R/W MONUMENTATION FOUND, CENTERLINE OF THE EXISTING ROADWAY AND RECORDED DEED DESCRIPTIONS.

AS PART OF THE PROJECT I HAVE REESTABLISHED THE LOCATIONS OF THE EXISTING PROPERTY LINE AND CENTERLINE OF EXISTING RIGHT-OF-WAY FOR PROPERTY TAXES CONTAINED HEREIN.

PLANS PREPARED BY:
COLUMBUS ENGINEERING CONSULTANTS, INC.
 340 MICHIGAN AVENUE, COLUMBUS, OHIO 43215
 PHONE: (614) 228-3500



C.M.C.
 CHRISTOPHER M. COOK, P.S.

P.S. 8424 2/3/2012
 SURVEYOR NO. Date

RECEIVED	20
RECORDED	20
BOOK	PAGE
COUNTY RECORDER	

CENTERLINE PLAT
 STA. 365+74.70 TO STA. 395+50.00

HEN-424-6.96

PROJECT CONTROL

PROJECT CONTROL WAS DERIVED FROM G.P.S. OBSERVATIONS AS PERFORMED IN MAY OF 2010, AND ARE RELATIVE TO OHIO STATE PLANE COORDINATES (GROUND, NORTH ZONE NAD 83 (COR596)).

PROJECT ADJUSTMENT FACTORS = 0.99992895 (GROUND TO GRID)
1.00007106 (GRID TO GROUND)

BASIS OF BEARINGS

THE BASIS OF BEARINGS ON THESE PLANS ARE BASED ON G.P.S. OBSERVATIONS AS PERFORMED IN MAY OF 2010, AND ARE RELATIVE TO OHIO STATE PLANE COORDINATES (GROUND, NORTH ZONE NAD 83 (COR596)).

O.D.O.T. PLANS REFERENCED

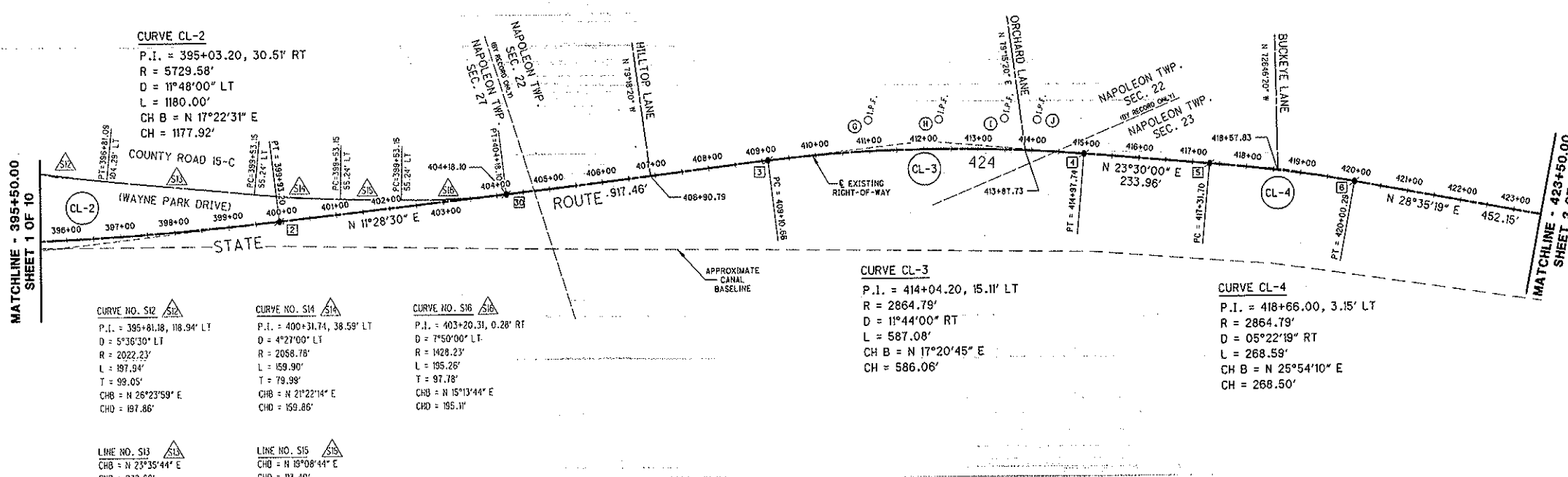
- HEN-24-10.00-8.63)
- HEN-24-18.55-8.56)
- HEN-24-19.37-10.01)
- HEN-108-15.55

HEN-424-6.96

**TOWNSHIP 5 NORTH, RANGE 6 EAST
SECTIONS 22, 23, & 27, NAPOLEON TOWNSHIP
CITY OF NAPOLEON, HENRY COUNTY, OHIO**

MONUMENT LEGEND

- ☒ EXISTING R/W MONUMENT BOX
- EXISTING CONCRETE POST
- ⊙ EXISTING CONCRETE MONUMENT
- STONE FOUND
- ⊗ SPIKE FOUND
- ▲ 3/8" X 4" MAGNETIZED SPIKE
- I.P.F. PIN FOUND
- ⊙ I.P.F. PIN FOUND W/ ID CAP
- I.P.S. PIN SET W/ ID CAP
- ⊙ P.F. PIPE FOUND
- ⊙ P.S. PIPE SET



CURVE NO. S12
P.I. = 395+81.18, 118.94' LT
D = 5°36'30" LT
R = 2022.23'
L = 197.94'
T = 99.05'
CH B = N 26°23'59" E
CH D = 197.86'

CURVE NO. S14
P.I. = 400+31.74, 38.59' LT
D = 4°27'00" LT
R = 2058.78'
L = 159.90'
T = 79.99'
CH B = N 21°22'14" E
CH D = 159.86'

CURVE NO. S16
P.I. = 403+20.31, 0.28' RT
D = 7°50'00" LT
R = 1428.23'
L = 195.26'
T = 97.78'
CH B = N 15°13'44" E
CH D = 195.11'

CURVE CL-3
P.I. = 414+04.20, 15.11' LT
R = 2864.79'
D = 11°44'00" RT
L = 587.08'
CH B = N 17°20'45" E
CH D = 586.06'

CURVE CL-4
P.I. = 418+66.00, 3.15' LT
R = 2864.79'
D = 05°22'19" RT
L = 268.59'
CH B = N 25°54'10" E
CH D = 268.50'

LINE NO. S13
CH B = N 23°35'44" E
CH D = 272.69'

LINE NO. S15
CH B = N 19°08'44" E
CH D = 113.40'

FOUND MONUMENTATION

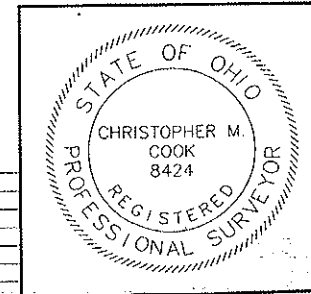
REF #	STATION & R/W	OFFSET	DESCRIPTION	STATE PLANE COORDINATES (GROUND)	
				NORTHING	EASTING
(C)	411+00.87	57.60' LT	1-1/4" PIPE FOUND - USED	625669.18	1515360.04
(H)	412+28.42	55.12' LT	1-1/4" PIPE FOUND - USED	625793.14	1515399.46
(I)	413+47.11	57.9' LT	3/4" REBAR FOUND - USED	625908.49	1515436.19
(J)	414+08.88	57.62' LT	1-1/4" PIPE FOUND - USED	625965.36	1515458.19

MONUMENTATION TO BE SET

REF #	STATION & R/W	OFFSET	DESCRIPTION	STATE PLANE COORDINATES (GROUND)	
				NORTHING	EASTING
[2]	399+93.20		3/8" X 4" MAGNETIZED SPIKE (P.T.)	624589.87	1515188.51
[3]	409+10.66		3/8" X 4" MAGNETIZED SPIKE (P.C.)	625468.98	1515371.60
[4]	414+97.74		3/8" X 4" MAGNETIZED SPIKE (P.T.)	626028.39	151546.33
[5]	417+31.70		3/8" X 4" MAGNETIZED SPIKE (P.C.)	626243.40	1515638.56
[6]	420+00.29		3/8" X 4" MAGNETIZED SPIKE (P.T.)	626484.92	1515755.85
[9]	404+18.10		3/8" X 4" MAGNETIZED SPIKE (P.T.)	624986.27	1515273.61

Slide 337A

201200088487
Filed for Record in
HENRY COUNTY OHIO
SARA L HYLES, RECORDER
02-21-2012 At 03:16 PM.
PLAT 40.00



PLANS PREPARED BY:
COLUMBUS ENGINEERING CONSULTANTS, INC.
840 MICHIGAN AVENUE, COLUMBUS, OHIO 43215
PHONE: (614) 228-3500
DATE: DECEMBER 15, 2011

REVISION	DATE	DESCRIPTION
1	01/20/12	UPDATED COORDINATES

N

HORIZONTAL SCALE IN FEET

P.L.D. NO. 88197

DATE DESIGNED: D.J.H.
DATE REVIEWED: C.M.C.

CENTERLINE PLAT
STA. 395+50.00 TO STA. 423+50.00

HEN-424-6.96

2 / 10

PROJECT CONTROL

PROJECT CONTROL WAS DERIVED FROM G.P.S. OBSERVATIONS AS PERFORMED IN MAY OF 2010, AND ARE RELATIVE TO OHIO STATE PLANE COORDINATES (GROUND, NORTH ZONE NAD 83 (CORS98)).

PROJECT ADJUSTMENT FACTORS = 0.99992895 (GROUND TO GRID)
1.00007106 (GRID TO GROUND)

BASIS OF BEARINGS

THE BASIS OF BEARINGS ON THESE PLANS ARE BASED ON G.P.S. OBSERVATIONS AS PERFORMED IN MAY OF 2010, AND ARE RELATIVE TO OHIO STATE PLANE COORDINATES (GROUND, NORTH ZONE NAD 83 (CORS98)).

O.D.O.T. PLANS REFERENCED

- HEN-24-10.00-8.63
- HEN-24-18.55-8.56
- HEN-24-19.37-10.01
- HEN-108-15.55

HEN-424-6.96

TOWNSHIP 5 NORTH, RANGE 6 EAST

SECTION 23, NAPOLEON TOWNSHIP

CITY OF NAPOLEON, HENRY COUNTY, OHIO

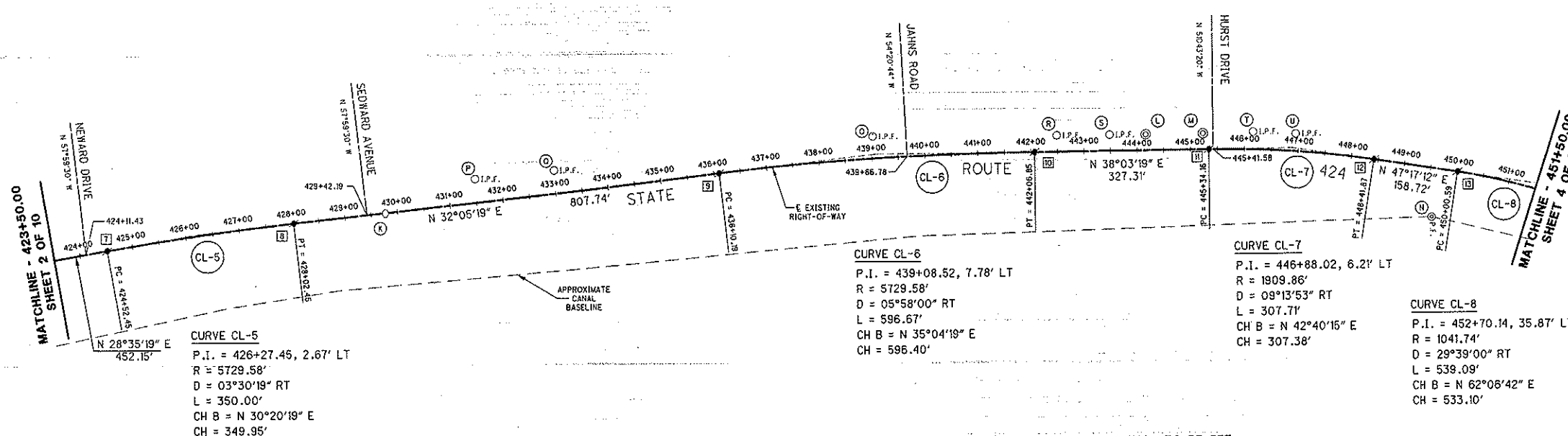
MONUMENT LEGEND

- EXISTING R/W MONUMENT BOX
- EXISTING CONCRETE POST
- EXISTING CONCRETE MONUMENT
- STONE FOUND
- SPIKE FOUND
- 3/8" X 4" MAGNETIZED SPIKE
- I.P.F. PIN FOUND
- I.P.F. PIN FOUND W/ ID CAP
- I.P.S. PIN SET W/ ID CAP
- P.F. PIPE FOUND
- P.S. PIPE SET



P.L.D. NO. 88197

P.W. DESIGNER D.J.H. P.W. REVIEWER C.M.C.



CURVE CL-5
P.I. = 426+27.45, 2.67' LT
R = 5729.58'
D = 03°30'19" RT
L = 350.00'
CH B = N 30°20'19" E
CH = 349.95'

CURVE CL-6
P.I. = 439+08.52, 7.78' LT
R = 5729.58'
D = 05°58'00" RT
L = 596.67'
CH B = N 35°04'19" E
CH = 596.40'

CURVE CL-7
P.I. = 446+88.02, 6.21' LT
R = 1909.86'
D = 09°13'53" RT
L = 307.71'
CH B = N 42°40'15" E
CH = 307.38'

CURVE CL-8
P.I. = 452+70.14, 35.87' LT
R = 1041.74'
D = 29°39'00" RT
L = 539.09'
CH B = N 62°08'42" E
CH = 533.10'

FOUND MONUMENTATION

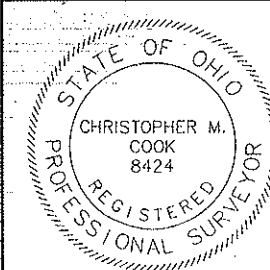
REF #	STATION C R/W	OFFSET	DESCRIPTION	STATE PLANE COORDINATES (GROUND)	
				NORTHING	EASTING
(X)	429+77.36	0.59' RT	SPIKE FOUND - USED	627331.83	1516242.38
(L)	444+16.36	30.00' LT	5/8" REBAR IN CONCRETE FOUND - USED & HELD	628539.83	1517026.35
(M)	445+23.54	30.00' LT	5/8" REBAR IN CONCRETE FOUND - USED & HELD	628824.28	1517092.35
(N)	449+65.38	90.89' RT	3/4" PIPE BENT FOUND - USED	628857.15	1517483.25
(O)	439+04.45	41.17' LT	PIN FOUND W/ CAP (R/L'S #7758) - USED	628137.13	1516707.01
(P)	431+52.01	52.12' LT	5/8" REBAR FOUND - USED	627504.10	1516296.45
(Q)	433+01.81	44.20' LT	5/8" REBAR FOUND - USED	627630.53	1516376.80
(R)	442+48.49	30.83' LT	5/8" REBAR FOUND - USED	628408.21	1516922.15
(S)	443+48.50	30.43' LT	5/8" REBAR FOUND IN CONCRETE - USED	628486.72	1516984.09
(T)	446+15.32	33.33' LT	1/2" REBAR FOUND - USED	628698.51	1517148.54
(U)	446+93.10	32.90' LT	5/8" REBAR FOUND - USED	628757.44	1517148.54

MONUMENTATION TO BE SET

REF #	STATION C R/W	OFFSET	DESCRIPTION	STATE PLANE COORDINATES (GROUND)	
				NORTHING	EASTING
(7)	424+52.45		3/8" X 4" MAGNETIZED SPIKE (P.C.)	626881.95	1515972.21
(8)	428+02.45		3/8" X 4" MAGNETIZED SPIKE (P.T.)	627183.97	1516148.97
(9)	436+10.19		3/8" X 4" MAGNETIZED SPIKE (P.C.)	627868.31	1516578.07
(10)	442+06.85		3/8" X 4" MAGNETIZED SPIKE (P.T.)	628356.42	1516920.76
(11)	445+34.16		3/8" X 4" MAGNETIZED SPIKE (P.C.)	628614.15	1517122.52
(12)	448+41.87		3/8" X 4" MAGNETIZED SPIKE (P.T.)	628640.15	1517330.86
(13)	450+00.59		3/8" X 4" MAGNETIZED SPIKE (P.C.)	628947.82	1517447.48

Slide 337B

201200088488
Filed for Record in
HENRY COUNTY OHIO
SARA L. MYLES, RECORDER
02-21-2012 At 03:16 pm.
PLAT 40.00



PLANS PREPARED BY:
COLUMBUS ENGINEERING CONSULTANTS, INC.
840 MICHIGAN AVENUE, COLUMBUS, OHIO 43215
PHONE: (614) 228-3500
DATE: DECEMBER 15, 2011

REVISION	DATE	DESCRIPTION
1	01/20/12	UPDATED COORDINATES

CENTERLINE PLAT
STA. 423+50.00 TO STA. 451+50.00

HEN-424-6.96

HEN-424-6.96

TOWNSHIP 5 NORTH, RANGE 6 EAST

SECTION 23, NAPOLEON TOWNSHIP

CITY OF NAPOLEON, HENRY COUNTY, OHIO

PROJECT CONTROL

PROJECT CONTROL WAS DERIVED FROM G.P.S. OBSERVATIONS AS PERFORMED IN MAY OF 2010, AND ARE RELATIVE TO OHIO STATE PLANE COORDINATES (GROUND, NORTH ZONE NAD 83 (CORS96)).

PROJECT ADJUSTMENT FACTORS = 0.99992895 (GROUND TO GRID)
1.00007106 (GRID TO GROUND)

BASIS OF BEARINGS

THE BASIS OF BEARINGS ON THESE PLANS ARE BASED ON G.P.S. OBSERVATIONS AS PERFORMED IN MAY OF 2010, AND ARE RELATIVE TO OHIO STATE PLANE COORDINATES (GROUND, NORTH ZONE NAD 83 (CORS96)).

O.D.O.T. PLANS REFERENCED

- HEN-24-10.00-8.631
- HEN-24-18.55-8.561
- HEN-24-19.37-10.011
- HEN-108-15.55

MONUMENT LEGEND

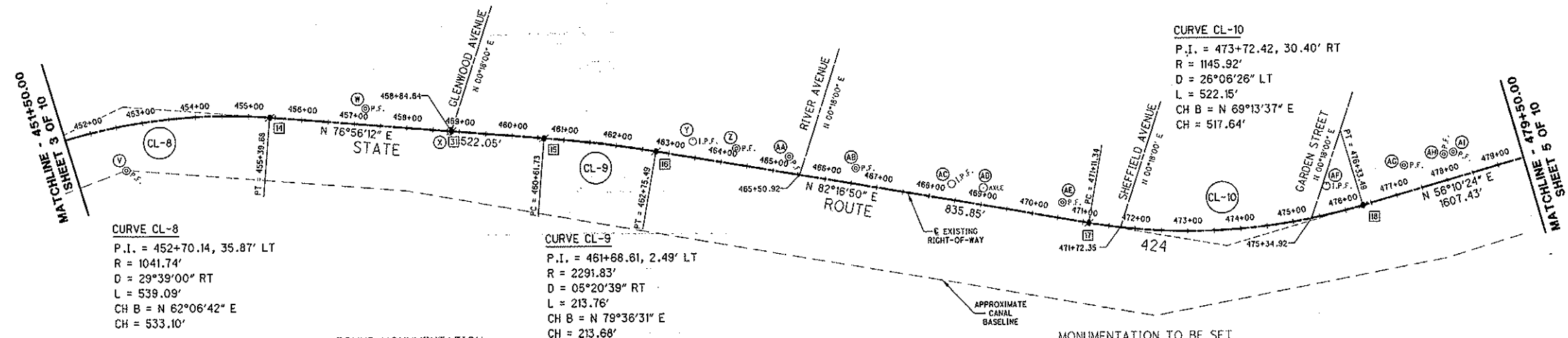
- ⊠ EXISTING R/W MONUMENT BOX
- EXISTING CONCRETE POST
- ⊙ EXISTING CONCRETE MONUMENT
- ⊡ STONE FOUND
- ⊙ SPIKE FOUND
- ⚡ 3/8" X 4" MAGNETIZED SPIKE
- I.P.F. PIN FOUND
- ⊙ I.P.F. PIN FOUND W/ ID CAP
- I.P.S. PIN SET W/ ID CAP
- ⊙ P.F. PIPE FOUND
- ⊙ P.S. PIPE SET

N

200'
HORIZONTAL
SCALE IN FEET

P.L.D. NO. 88197

R/W DESIGNER DJH
R/W CHECKER CMC



CURVE CL-8
P.I. = 452+70.14, 35.87' LT
R = 1041.74'
D = 29°39'00" RT
L = 539.09'
CH B = N 62°06'42" E
CH = 533.10'

CURVE CL-9
P.I. = 461+88.61, 2.49' LT
R = 2291.83'
D = 05°20'39" RT
L = 213.76'
CH B = N 79°38'31" E
CH = 213.68'

CURVE CL-10
P.I. = 473+72.42, 30.40' RT
R = 1145.92'
D = 26°06'26" LT
L = 522.15'
CH B = N 69°13'37" E
CH = 517.64'

FOUND MONUMENTATION

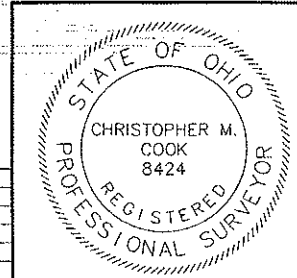
REF #	STATION C R/W	OFFSET	DESCRIPTION	STATE PLANE COORDINATES (GROUND)	
				NORTHING	EASTING
(V)	452+52.55	83.99' RT	3/4" PIPE FOUND BENT - USED	629021.22	1517691.90
(N)	457+19.60	30.75' RT	3/4" PIPE FOUND - USED	629267.87	1518086.45
(X)	458+82.14	0.00	SPIKE FOUND - USED & HELD	629274.58	1518252.26
(Y)	463+40.71	30.00' LT	PIN FOUND W/ CAP (R.L.S #7758) - USED	629392.20	1518697.97
(Z)	464+24.19	30.07' LT	3/4" PIPE FOUND - USED & HELD	629403.48	1518780.69
(AA)	465+25.46	30.93' LT	3/4" PIPE FOUND - USED	629417.93	1518880.93
(AB)	466+53.98	29.66' LT	3/4" PIPE FOUND - USED	629433.94	1519008.45
(AC)	468+38.56	29.37' LT	5/8" REBAR FOUND - USED	629459.04	1519191.31
(AD)	468+98.99	32.53' LT	1" SQUARE AXLE FOUND - USED	629469.70	1519250.86
(AE)	470+54.07	30.00' LT	3/4" PIPE FOUND - USED & HELD	629488.02	1519404.87
(AF)	475+75.93	53.52' LT	PIN FOUND W/ CAP (MAXON #6656) - USED	629664.65	1519873.52
(AG)	477+29.35	50.57' LT	3/4" PIPE FOUND - USED	629744.95	1520001.12
(AH)	478+07.35	49.14' LT	1-1/4" PIPE FOUND - USED	629787.18	1520065.71
(AI)	478+25.60	48.57' LT	1-1/4" PIPE FOUND - USED	629796.86	1520082.19

MONUMENTATION TO BE SET

REF #	STATION C R/W	OFFSET	DESCRIPTION	STATE PLANE COORDINATES (GROUND)	
				NORTHING	EASTING
(M)	455+39.68		3/8" X 4" MAGNETIZED SPIKE (P.T.)	629197.17	1517918.66
(O)	460+67.73		3/8" X 4" MAGNETIZED SPIKE (P.C.)	629315.17	1518427.19
(P)	462+75.49		3/8" X 4" MAGNETIZED SPIKE (P.T.)	629353.71	1518637.37
(Q)	471+11.34		3/8" X 4" MAGNETIZED SPIKE (P.C.)	629465.98	1519465.65
(R)	476+33.49		3/8" X 4" MAGNETIZED SPIKE (P.T.)	629649.57	1519949.64
(S)	458+84.64		3/8" X 4" MAGNETIZED SPIKE (P.T.)	629275.14	1518254.69

Side
338A

201200088489
Filed for Record in
HENRY COUNTY OHIO
SARA L HYLES, RECORDER
02-21-2012 At 03:16 pm.
PLAT 40.00



PLANS PREPARED BY:
COLUMBUS ENGINEERING CONSULTANTS, INC.
840 MICHIGAN AVENUE, COLUMBUS, OHIO 43215
PHONE: (614) 228-3500
DATE: DECEMBER 15, 2011

REVISION	DATE	DESCRIPTION
1	01/20/12	UPDATED COORDINATES

CENTERLINE PLAT
STA. 451+50.00 TO STA. 479.50.00

HEN-424-6.96

4 / 10

PROJECT CONTROL

PROJECT CONTROL WAS DERIVED FROM G.P.S. OBSERVATIONS AS PERFORMED IN MAY OF 2010, AND ARE RELATIVE TO OHIO STATE PLANE COORDINATES (GROUND, NORTH ZONE NAD 83 (CORS96)).

PROJECT ADJUSTMENT FACTORS = 0.99992895 (GROUND TO GRID)
1.00007106 (GRID TO GROUND)

BASIS OF BEARINGS

THE BASIS OF BEARINGS ON THESE PLANS ARE BASED ON G.P.S. OBSERVATIONS AS PERFORMED IN MAY OF 2010, AND ARE RELATIVE TO OHIO STATE PLANE COORDINATES (GROUND, NORTH ZONE NAD 83 (CORS96)).

O.D.O.T. PLANS REFERENCED

HEN-24-(0.00-8.63)
HEN-24-(8.55-8.56)
HEN-24-(9.37-10.01)
HEN-108-15.55

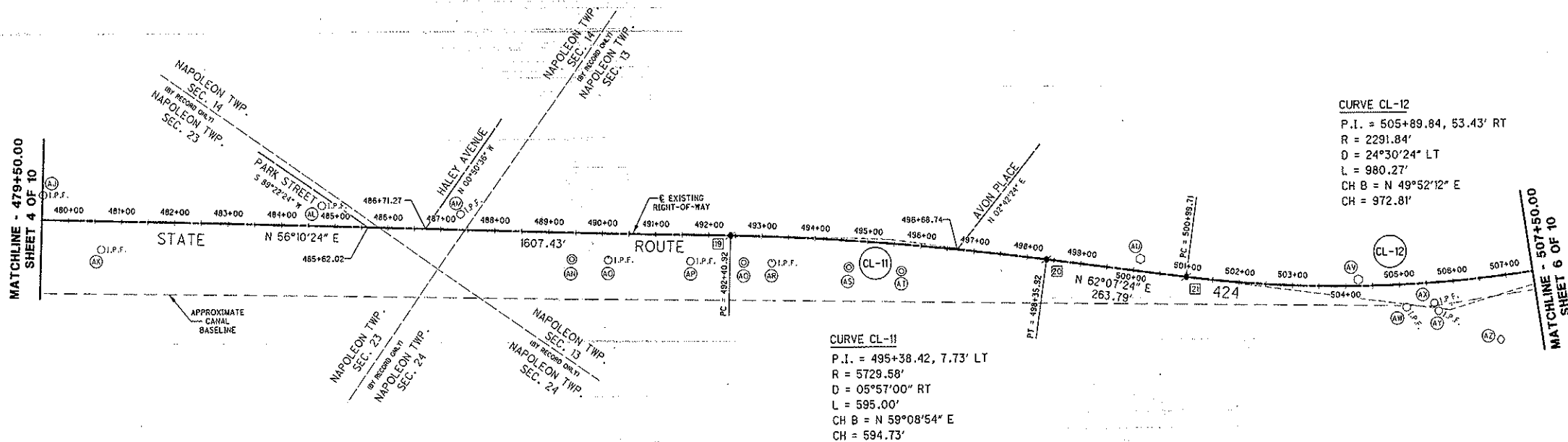
HEN-424-6.96

**TOWNSHIP 5 NORTH, RANGE 6 EAST
SECTIONS 13, 14, & 23, NAPOLEON TOWNSHIP
CITY OF NAPOLEON, HENRY COUNTY, OHIO**

MONUMENT LEGEND

- ⊠ EXISTING R/W MONUMENT BOX
- EXISTING CONCRETE POST
- ⊙ EXISTING CONCRETE MONUMENT
- ⊠ STONE FOUND
- ⌘ SPIKE FOUND
- ★ 3/8" X 4" MAGNETIZED SPIKE
- I.P.F. PIN FOUND
- ⊙ I.P.F. PIN FOUND W/ ID CAP
- I.P.S. PIN SET W/ ID CAP
- ⊙ P.F. PIPE FOUND
- ⊙ P.S. PIPE SET

P.L.D. NO. 80197
 R/W DESIGNER DJH
 S/W REVIEWER CMC



FOUND MONUMENTATION

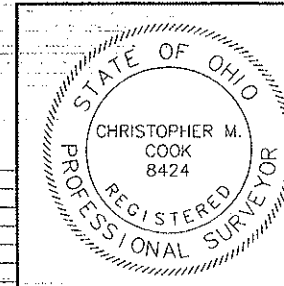
REF #	STATION E R/W	OFFSET	DESCRIPTION	STATE PLANE COORDINATES (GROUND)	
				NORTHING	EASTING
(A)	479+50.89	45.21' LT	1" PIN FOUND - USED	629865.21	1520187.57
(A)	480+63.07	53.48' RT	3/4" PIPE FOUND - USED	629844.29	1520336.28
(AL)	484+74.26	38.38' LT	3/4" PIN FOUND - USED	630149.51	1520626.73
(AM)	487+36.14	29.37' LT	3/4" PIPE FOUND - USED	630287.80	1520849.29
(AN)	489+43.61	50.00' RT	CHISLED "X" ON 2" ALUMINUM DISC (FINCH & ASSOCIATES INC) - USED & HELD	630337.36	1521065.82
(AO)	490+12.16	50.00' RT	3/4" PIPE BENT - USED	630375.52	1521122.77
(AP)	491+66.57	49.23' RT	1" SOLID PIN, 14" BELOW GROUND - USED	630462.12	1521250.62
(AC)	492+67.03	50.03' RT	CHISLED "X" ON 2" ALUMINUM DISC (FINCH & ASSOCIATES INC) - USED & HELD	630517.20	1521334.36
(AR)	493+20.51	49.50' RT	PIN FOUND W/ CAP (PS# 6842) - USED	630546.75	1521378.39
(AS)	494+67.07	50.08' RT	CHISLED "X" ON 2" ALUMINUM DISC (FINCH & ASSOCIATES INC) - USED & HELD	630623.89	1521501.49
(AT)	495+67.07	50.09' RT	CHISLED "X" ON 2" ALUMINUM DISC (FINCH & ASSOCIATES INC) - USED & HELD	630675.03	1521586.41
(AU)	500+09.99	22.90' LT	20" CONCRETE POST, 5' HIGH - USED	630951.02	1521938.71
(AV)	504+23.42	11.99' LT	20" CONCRETE POST, 5' HIGH - USED	631153.46	1522296.21
(AW)	505+11.09	43.04' RT	1/4" PIN FOUND - USED	631162.76	1522399.81
(AX)	505+62.08	38.33' RT	5/8" REBAR BENT FOUND - USED	631198.95	1522437.29
(AY)	505+68.88	53.60' RT	5/8" REBAR BENT FOUND - USED	631191.58	1522452.36
(AZ)	506+76.37	118.57' RT	SPIKE FOUND - USED	631215.81	1522579.16

MONUMENTATION TO BE SET

REF #	STATION E R/W	OFFSET	DESCRIPTION	STATE PLANE COORDINATES (GROUND)	
				NORTHING	EASTING
(18)	492+40.92		3/8" X 4" MAGNETIZED SPIKE (P.C.)	630544.40	1521284.97
(19)	498+35.92		3/8" X 4" MAGNETIZED SPIKE (P.T.)	630849.39	1521795.55
(21)	500+99.71		3/8" X 4" MAGNETIZED SPIKE (P.C.)	630972.73	1522028.73

Slide
338B

201200033490
Filed for Record in
HENRY COUNTY OHIO
SARA L NYLES, RECORDER
02-21-2012 At 03:16 p.m.
PLAT 40.00



PLANS PREPARED BY:
COLUMBUS ENGINEERING CONSULTANTS, INC.
840 MICHIGAN AVENUE, COLUMBUS, OHIO 43215
PHONE: (614) 228-3500
DATE: DECEMBER 15, 2011

REVISION	DATE	DESCRIPTION
1	01/20/12	UPDATED COORDINATES

CENTERLINE PLAT
 STA. 479+50.00 TO STA. 507+50.00

HEN-424-6.96

HEN-424-6.96

TOWNSHIP 5 NORTH, RANGE 6 EAST SECTION 13, NAPOLEON TOWNSHIP CITY OF NAPOLEON, HENRY COUNTY, OHIO

PROJECT CONTROL

PROJECT CONTROL WAS DERIVED FROM G.P.S. OBSERVATIONS AS PERFORMED IN MAY OF 2010, AND ARE RELATIVE TO OHIO STATE PLANE COORDINATES (GROUND, NORTH ZONE NAD 83 (CORS96)).

PROJECT ADJUSTMENT FACTORS = 0.99992895 (GROUND TO GRID)
1.00007106 (GRID TO GROUND)

BASIS OF BEARINGS

THE BASIS OF BEARINGS ON THESE PLANS ARE BASED ON G.P.S. OBSERVATIONS AS PERFORMED IN MAY OF 2010, AND ARE RELATIVE TO OHIO STATE PLANE COORDINATES (GROUND, NORTH ZONE NAD 83 (CORS96)).

O.D.O.T. PLANS REFERENCED

HEN-24-(0.00-8.63)
HEN-24-(8.55-8.56)
HEN-24-(9.37-10.01)
HEN-108-15.55

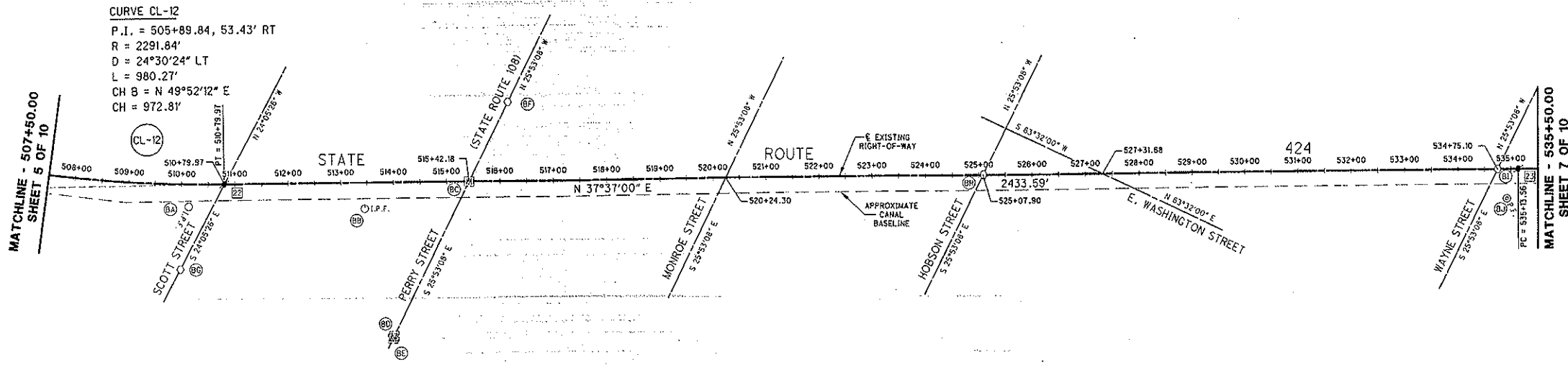
MONUMENT LEGEND

- ◻ EXISTING R/W MONUMENT BOX
- EXISTING CONCRETE POST
- ⊙ EXISTING CONCRETE MONUMENT
- △ STONE FOUND
- ⊗ SPIKE FOUND
- ✱ 3/8" X 4" MAGNETIZED SPIKE
- I.P.F. PIN FOUND
- ⊙ I.P.F. PIN FOUND W/ ID CAP
- I.P.S. PIN SET W/ ID CAP
- ⊙ P.F. PIPE FOUND
- ⊙ P.S. PIPE SET



P.L.O. NO. 88197

R/W DESIGNER DJH
P.A. REVIEWER CMC



CURVE CL-12
P.I. = 505+89.84, 53.43' RT
R = 2291.84'
D = 24°30'24" LT
L = 980.27'
CH B = N 49°52'12" E
CH = 972.81'

MATCHLINE - 507+50.00
SHEET 5 OF 10

MATCHLINE - 535+50.00
SHEET 7 OF 10

FOUND MONUMENTATION

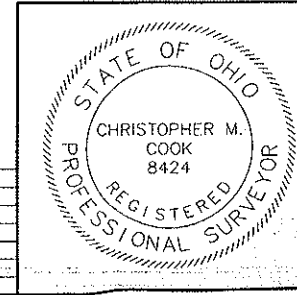
REF #	STATION ± R/W	OFFSET	DESCRIPTION	STATE PLANE COORDINATES (GROUND)	
				NORTHING	EASTING
(A)	510+13.84	42.26' RT	1/2" REBAR FOUND - USED	631621.18	1522764.12
(B)	513+45.03	49.52' RT	5/8" REBAR FOUND W/ CAP (I#8305) - USED	631779.46	1522973.54
(C)	515+42.18	0.00' RT	1" STEEL ROD FOUND IN MONUMENT BOX USED & HELD	631965.84	1523054.64
(D)	513+42.18	290.76' RT	1" STEEL ROD FOUND IN MONUMENT BOX USED & HELD	631673.60	1523196.50
(E)	513+95.00	295.22' RT	1" STEEL ROD FOUND IN MONUMENT BOX USED & HELD	631669.08	1523198.65
(F)	516+16.86	149.82' LT	SPIKE FOUND - USED & HELD	632116.45	1522981.56
(G)	510+00.51	160.71' RT	SPIKE FOUND - USED	631435.19	1522846.77
(H)	525+08.74	0.57' LT	NAIL W/ WASHER FOUND - USED	632731.82	1523644.16
(I)	534+75.10	0.00' RT	NAIL W/ WASHER FOUND - USED & HELD	633496.93	1524234.45
(J)	534+92.22	55.25' RT	3/4" PIPE IN CONCRETE FOUND - USED	633476.77	1524288.66

MONUMENTATION TO BE SET

REF #	STATION ± R/W	OFFSET	DESCRIPTION	STATE PLANE COORDINATES (GROUND)	
				NORTHING	EASTING
(K)	510+79.97		3/8" X 4" MAGNETIZED SPIKE (P.T.)	631699.73	1522772.53
(L)	535+13.56		3/8" X 4" MAGNETIZED SPIKE (P.C.)	633527.40	1524257.93

Slide
339A

201200088491
Filed for Record in
HENRY COUNTY OHIO
SARA L. MYLES, RECORDER
02-21-2012 At 03:16 PM.
PLAT 40.00



PLANS PREPARED BY:
COLUMBUS ENGINEERING CONSULTANTS, INC.
840 MICHIGAN AVENUE, COLUMBUS, OHIO 43215
PHONE: (614) 228-3500
DATE: DECEMBER 15, 2011

REVISION	DATE	DESCRIPTION
1	01/20/12	UPDATED COORDINATES

CENTERLINE PLAT
STA. 507+50.00 TO STA. 535+50.00

HEN-424-6.96

6 / 10

HEN-424-6.96
TOWNSHIP 5 NORTH, RANGE 6
SECTIONS 13 & 18, NAPOLEON TOWNSHIP
TOWNSHIP 5 NORTH, RANGE 7
SECTION 7, LIBERTY TOWNSHIP
CITY OF NAPOLEON, HENRY COUNTY, OHIO

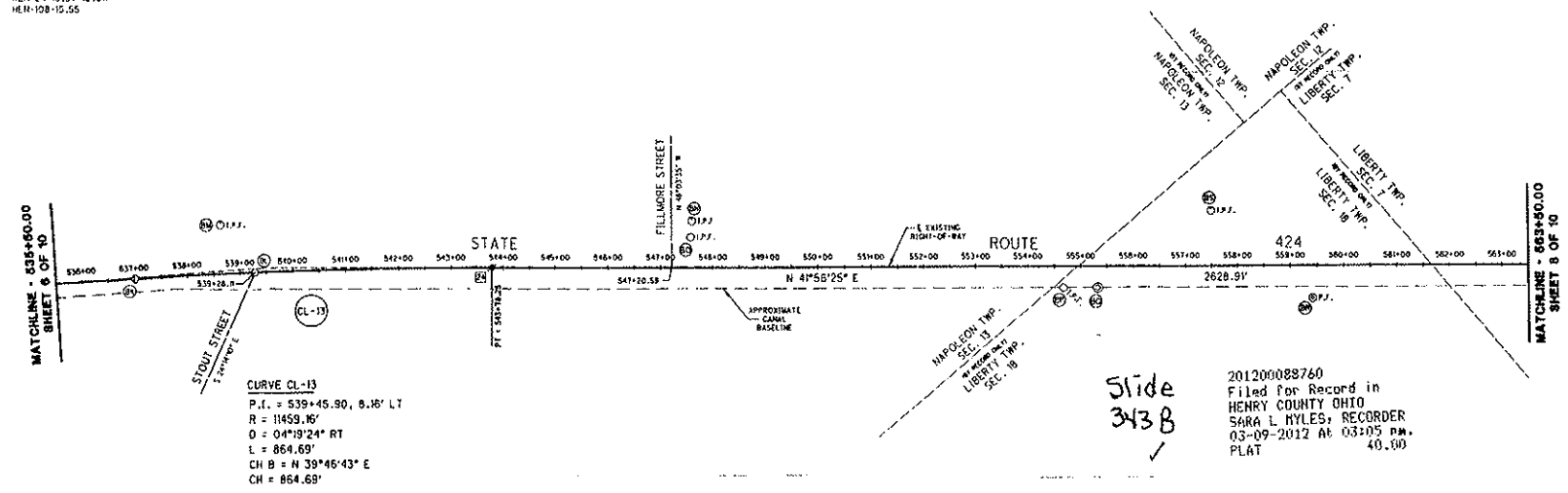
PROJECT CONTROL
 PROJECT CONTROL WAS DERIVED FROM G.P.S. OBSERVATIONS AS PERFORMED IN MAY 01 2010, AND ARE RELATIVE TO OHIO STATE PLANE COORDINATES (GROUND, NORTH ZONE NAD 83 (COPS96))

PROJECT ADJUSTMENT FACTORS - 0.99997895 (GROUND TO GRID) 1.00002106 (GRID TO GROUND)

BASIS OF BEARINGS
 THE BASIS OF BEARINGS ON THESE PLANS ARE BASED ON G.P.S. OBSERVATIONS AS PERFORMED IN MAY OF 2010, AND ARE RELATIVE TO OHIO STATE PLANE COORDINATES (GROUND, NORTH ZONE NAD 83 (COPS96)).

O.D.O.T. PLANS REFERENCED
 HEN-24-10.00-B.631
 HEN-24-18.55-B.661
 HEN-24-19.33-10.011
 HEN-108-15.55

- MONUMENT LEGEND**
- Ⓚ EXISTING R/W MONUMENT BOX
 - Ⓞ EXISTING CONCRETE POST
 - Ⓢ EXISTING CONCRETE MONUMENT
 - Ⓛ STONE FOUND
 - Ⓢ SPIKE FOUND
 - Ⓢ 3/8" X 4" MAGNETIZED SPIKE
 - Ⓢ PIN FOUND
 - Ⓢ PIN FOUND W/ 10 CAP
 - Ⓢ PIN SET W/ 10 CAP
 - Ⓢ PIPE FOUND
 - Ⓢ PIPE SET



CURVE CL-13
 P.I. = 539+45.90, 8.16' LT
 R = 11459.16'
 Δ = 04°19'24" RT
 L = 864.69'
 CH B = N 39°46'43" E
 CH = 864.69'

201200089760
 Filed for Record in
 HENRY COUNTY OHIO
 SARA L. NILES, RECORDER
 03-09-2012 At 03:05 P.M.
 PLAT 40.00

FOUND MONUMENTATION

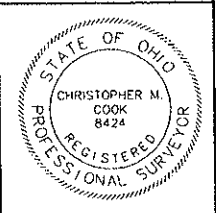
REF #	STATION	OFFSET	DESCRIPTION	STATE PLANE COORDINATES (GROUND)	
				NORTHING	EASTING
Ⓚ	537+01.44	0.06' RT	SPIKE FOUND - USED	633615.23	1524313.87
Ⓢ	538+26.08	0.06' RT	SPIKE W/ WASHER FOUND - USED	633851.06	1524616.88
Ⓢ	539+66.35	83.20' LT	3/4" PIPE FOUND W/ CAP (#5842) - USED	633882.63	1524405.49
Ⓢ	547+59.78	86.06' LT	5/8" REBAR FOUND W/ CAP (#5922) - USED	634534.84	1525000.06
Ⓢ	547+57.16	57.65' LT	5/8" REBAR FOUND - USED	634512.16	1525021.42
Ⓢ	554+67.57	40.20' RT	1" PIN FOUND - USED	634915.19	1525069.00
Ⓢ	555+32.35	40.19' RT	2" PIN FOUND - USED	634925.22	1525071.14
Ⓢ	559+41.61	61.42' RT	1" PIPE FOUND - USED	635333.66	1525301.66
Ⓢ	557+48.13	104.52' LT	PIN FOUND W/ CAP (REL'S #5603) FOUND - USED	635281.79	1525648.94

MONUMENTATION TO BE SET

REF #	STATION	OFFSET	DESCRIPTION	STATE PLANE COORDINATES (GROUND)	
				NORTHING	EASTING
Ⓢ	543+78.25		3/8" X 4" MAGNETIZED SPIKE (P. 7.1)	634811.71	1524811.03

PLANS PREPARED BY:
COLUMBUS ENGINEERING CONSULTANTS, INC.
 840 BIRMGHAM AVENUE, COLUMBUS, OHIO 43215
 PHONE: (614) 228-3500
 DATE: DECEMBER 12, 2011

REVISION	DATE	DESCRIPTION
3	03/09/12	CORRECTED RANGE NUMBER
2	02/27/12	CORRECTED RANGE NUMBER
1	01/20/12	UPDATED COORDINATES



CENTERLINE PLAT
 STA. 535+00.00 TO STA. 563+00.00
 HEN-424-6.96
 7 / 10

PROJECT CONTROL

PROJECT CONTROL WAS DERIVED FROM G.P.S. OBSERVATIONS AS PERFORMED IN MAY OF 2010, AND ARE RELATIVE TO OHIO STATE PLANE COORDINATES (GROUND, NORTH ZONE NAD 83 (CORS96)).

PROJECT ADJUSTMENT FACTORS = 0.99992895 (GROUND TO GRID)
1.00007106 (GRID TO GROUND)

BASIS OF BEARINGS

THE BASIS OF BEARINGS ON THESE PLANS ARE BASED ON G.P.S. OBSERVATIONS AS PERFORMED IN MAY OF 2010, AND ARE RELATIVE TO OHIO STATE PLANE COORDINATES (GROUND, NORTH ZONE NAD 83 (CORS96)).

Q.D.O.T. PLANS REFERENCED

- HEN-24-10.00-8.63
- HEN-24-18.55-8.56
- HEN-24-19.37-10.01
- HEN-108-15.55

HEN-424-6.96

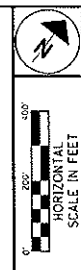
TOWNSHIP 5 NORTH, RANGE 7 EAST

SECTION 7, LIBERTY TOWNSHIP

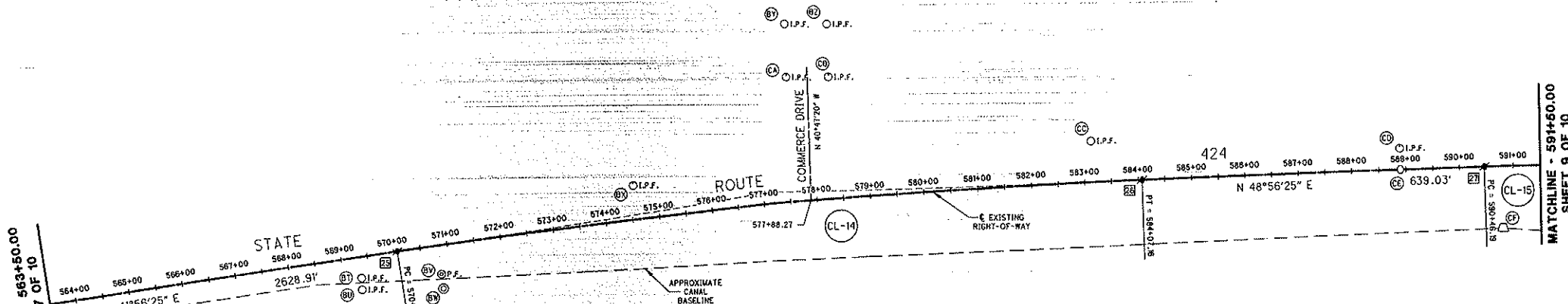
CITY OF NAPOLEON, HENRY COUNTY, OHIO

MONUMENT LEGEND

- ☐ EXISTING R/W MONUMENT BOX
- EXISTING CONCRETE POST
- ⊙ EXISTING CONCRETE MONUMENT
- △ STONE FOUND
- ⊘ SPIKE FOUND
- ✦ 3/8" X 4" MAGNETIZED SPIKE
- I.P.F. PIN FOUND
- ⊙ I.P.F. PIN FOUND W/ ID CAP
- I.P.S. PIN SET W/ ID CAP
- ⊙ P.F. PIPE FOUND
- ⊙ P.S. PIPE SET



P.L.O. NO. 88197
R.A. ENGINEER DJH
R.A. SURVEYOR CMC



CURVE CL-14
P.I. = 577+07.16, 21.41' LT
R = 11459.16'
D = 07°00'00" RT
L = 1400.00'
CH B = N 45°26'25" E
CH = 1399.13'

CURVE CL-15
P.I. = 596+95.39, 36.98' LT
R = 5729.16'
D = 12°59'05" RT
L = 1298.39'
CH B = N 55°25'58" E
CH = 1295.61'

FOUND MONUMENTATION

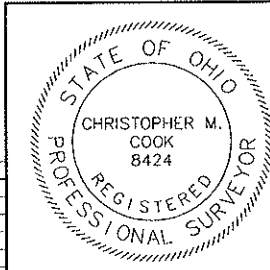
REF #	STATION & R/W	OFFSET	DESCRIPTION	STATE PLANE COORDINATES (GROUND)	
				NORTHING	EASTING
(U)	569+33.39	39.99' RT	5/8" REBAR FOUND - USED	636065.67	1526548.54
(V)	569+30.88	61.88' RT	1/2" REBAR LEANING EAST FOUND - USED	636049.17	1526563.15
(W)	570+82.03	54.73' RT	3/4" PIPE FOUND - USED	636165.96	1526658.79
(X)	570+81.52	82.19' RT	CONCRETE MONUMENT W/ NAIL FOUND - USED	636147.09	1526678.76
(Y)	574+58.07	64.60' LT	1/2" REBAR FOUND W/ CAP (R.L.S 5922) - USED	636521.70	1526829.67
(Z)	577+68.41	334.36' LT	1/2" REBAR LEANING WEST FOUND W/ CAP (WORLINE ASSOC 6741) - USED	636935.70	1526861.97
(A)	578+46.08	329.84' LT	1/2" REBAR FOUND W/ CAP (WORLINE ASSOC 6741) - USED	636987.88	1526922.69
(B)	577+62.56	234.41' LT	1/2" REBAR FOUND - USED	636859.34	1526921.45
(C)	578+40.75	230.02' LT	1/2" REBAR FOUND - USED	636812.29	1526987.80
(D)	583+14.62	77.64' LT	5/8" REBAR FOUND - USED	637126.04	1527444.00
(E)	588+90.16	40.10' LT	5/8" REBAR FOUND W/ CAP - USED	637476.47	1527902.85
(F)	588+80.91	0.00' RT	SPIKE W/ WASHER FOUND - USED & HELD	637446.06	1527929.00
(G)	590+78.00	116.56' RT	BURIED STONE FOUND - USED	637481.23	1528146.96

MONUMENTATION TO BE SET

REF #	STATION & R/W	OFFSET	DESCRIPTION	STATE PLANE COORDINATES (GROUND)	
				NORTHING	EASTING
(H)	570+07.16		3/8" X 4" MAGNETIZED SPIKE (P.C.)	636147.27	1526568.09
(I)	584+07.16		3/8" X 4" MAGNETIZED SPIKE (P.T.)	637120.97	1527565.00
(J)	590+46.19		3/8" X 4" MAGNETIZED SPIKE (P.T.)	637548.72	1528046.85

Slide 342A

201200088618
Filed for Record in
HENRY COUNTY OHIO
SARA L MYLES, RECORDER
02-29-2012 At 03:40 PM.
PLAT 40.00



PLANS PREPARED BY:
COLUMBUS ENGINEERING CONSULTANTS, INC.
840 MICHIGAN AVENUE, COLUMBUS, OHIO 43215
PHONE: (614) 228-3900
DATE: DECEMBER 15, 2011

REVISION	DATE	DESCRIPTION
2	02/22/12	CORRECTED RANGE NUMBER
1	01/20/12	UPDATED COORDINATES

CENTERLINE PLAT
STA. 563+50.00 TO STA. 591+50.00

HEN-424-6.96

HEN-424-6.96

TOWNSHIP 5 NORTH, RANGE 7 EAST

SECTION 7, LIBERTY TOWNSHIP

CITY OF NAPOLEON, HENRY COUNTY, OHIO

PROJECT CONTROL

PROJECT CONTROL WAS DERIVED FROM G.P.S. OBSERVATIONS AS PERFORMED IN MAY OF 2010, AND ARE RELATIVE TO OHIO STATE PLANE COORDINATES (GROUND, NORTH ZONE NAD 83 (ICORS86)).

PROJECT ADJUSTMENT FACTORS = 0.99992895 (GROUND TO GRID)
1.00007106 (GRID TO GROUND)

BASIS OF BEARINGS

THE BASIS OF BEARINGS ON THESE PLANS ARE BASED ON G.P.S. OBSERVATIONS AS PERFORMED IN MAY OF 2010, AND ARE RELATIVE TO OHIO STATE PLANE COORDINATES (GROUND, NORTH ZONE NAD 83 (ICORS86)).

O.D.O.T. PLANS REFERENCED

- HEN-24-10.00-8.63
- HEN-24-18.55-8.56
- HEN-24-18.37-10.01
- HEN-108-15.55

MONUMENT LEGEND

- ☐ EXISTING R/W MONUMENT BOX
- EXISTING CONCRETE POST
- ⊙ EXISTING CONCRETE MONUMENT
- ⊠ STONE FOUND
- ⚡ SPIKE FOUND
- ⚡ 3/8" X 4" MAGNETIZED SPIKE
- ⊙ I.P.F. PIN FOUND
- ⊙ I.P.F. PIN FOUND W/ ID CAP
- I.P.S. PIN SET W/ ID CAP
- ⊙ P.F. PIPE FOUND
- ⊙ P.S. PIPE SET

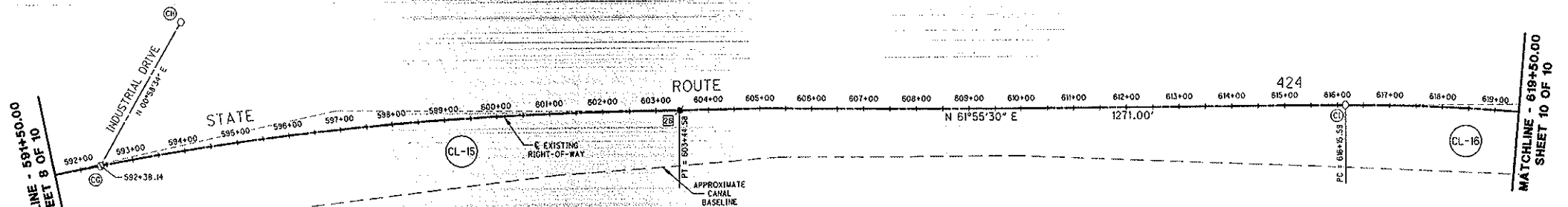


88197

DESIGNER: D.J.H.
CHECKER: C.H.C.

CENTERLINE PLAT
STA. 591+50.00 TO STA. 619+50.00

HEN-424-6.96



CURVE CL-15

P.I. = 596+95.39, 36.98' LT
R = 5729.16'
D = 12°59'05" RT
L = 1298.39'
CH B = N 55°25'58" E
CH = 1295.61'

CURVE CL-16

P.I. = 632+70.97, 389.13' LT
R = 3819.46'
D = 49°39'54" RT
L = 3310.77'
CH B = N 86°45'27" E
CH = 3208.09'

FOUND MONUMENTATION

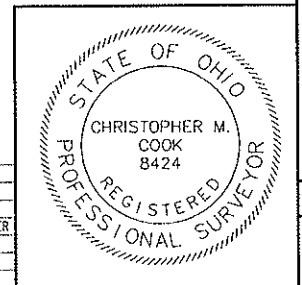
REF #	STATION ± R/W	OFFSET	DESCRIPTION	STATE PLANE COORDINATES (GROUND)	
				NORTHING	EASTING
⊙	592+37.93	0.25' RT	SPIKE W/ WASHER FOUND - USED	637672.02	1528193.66
⊙	594+32.79	244.27' LT	SPIKE FOUND - USED	637987.22	1528199.03
⊙	616+15.24	0.21' LT	SPIKE FOUND - USED	638882.01	1530234.78

MONUMENTATION TO BE SET

REF #	STATION ± R/W	OFFSET	DESCRIPTION	STATE PLANE COORDINATES (GROUND)	
				NORTHING	EASTING
⚡	603+44.58		3/8" X 4" MAGNETIZED SPIKE (P.C.)	638283.82	1829113.73

Side
342B

201200088619
Filed for Record in
HENRY COUNTY OHIO
SARA L MYLES, RECORDER
02-29-2012 At 03:40 pm.
PLAT 40.00



PLANS PREPARED BY:
COLUMBUS ENGINEERING CONSULTANTS, INC.
840 MICHIGAN AVENUE, COLUMBUS, OHIO 43215
PHONE: (614) 228-3500
DATE: DECEMBER 15, 2011

REVISION	DATE	DESCRIPTION
2	02/22/12	CORRECTED RANGE NUMBER
1	01/20/12	UPDATED COORDINATES

PROJECT CONTROL

PROJECT CONTROL WAS DERIVED FROM G.P.S. OBSERVATIONS AS PERFORMED IN MAY OF 2010, AND ARE RELATIVE TO OHIO STATE PLANE COORDINATES (GROUND, NORTH ZONE NAD 83 (CORS96)).

PROJECT ADJUSTMENT FACTORS = 0.99992895 (GROUND TO GRID)
1.00007106 (GRID TO GROUND)

BASIS OF BEARINGS

THE BASIS OF BEARINGS ON THESE PLANS ARE BASED ON G.P.S. OBSERVATIONS AS PERFORMED IN MAY OF 2010, AND ARE RELATIVE TO OHIO STATE PLANE COORDINATES (GROUND, NORTH ZONE NAD 83 (CORS96)).

O.D.O.T. PLANS REFERENCED

HEN-24-10.00-8.631
HEN-24-18.55-8.561
HEN-24-19.37-10.011
HEN-108-15.55

HEN-424-6.96

TOWNSHIP 5 NORTH, RANGE 7 EAST

SECTIONS 6 & 7, LIBERTY TOWNSHIP

CITY OF NAPOLEON, HENRY COUNTY, OHIO

MONUMENT LEGEND

- ☐ EXISTING R/W MONUMENT BOX
- EXISTING CONCRETE POST
- ⊙ EXISTING CONCRETE MONUMENT
- STONE FOUND
- ⊗ SPIKE FOUND
- ✱ 3/8" X 4" MAGNETIZED SPIKE
- I.P.S. PIN FOUND
- ⊙ I.P.S. PIN FOUND W/ ID CAP
- I.P.S. PIN SET W/ ID CAP
- ⊙ P.F. PIPE FOUND
- ⊙ P.S. PIPE SET



200
100
0
100
200
HORIZONTAL
SCALE IN FEET

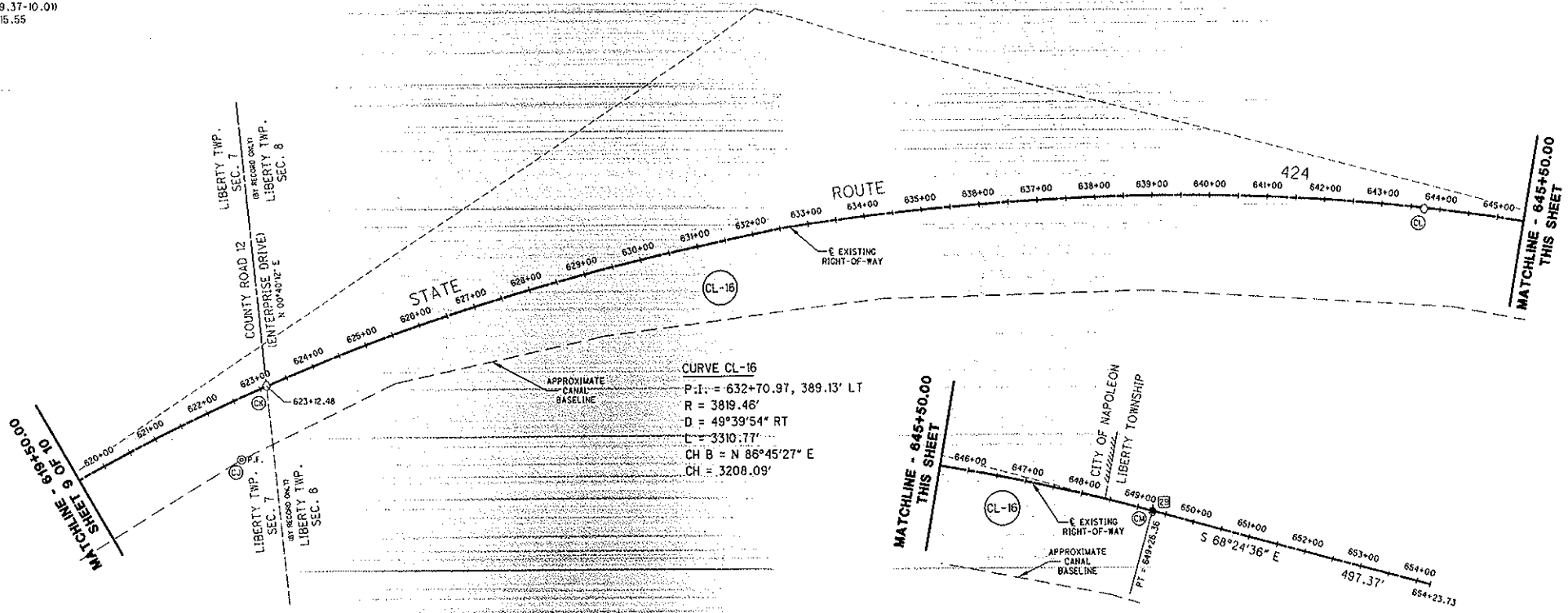
P.L.C. NO. 88197

R/W DESIGNER DJH
P.A. REVIEWER CMC

CENTERLINE PLAT
STA. 619+50.00 TO STA. 654+30.54

HEN-424-6.96

10 / 10



FOUND MONUMENTATION

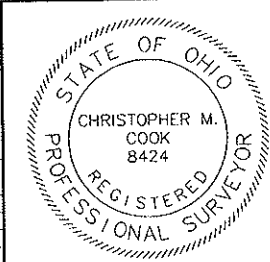
REF #	STATION ± R/W	OFFSET	DESCRIPTION	STATE PLANE COORDINATES (GROUND)	
				NORTHING	EASTING
⊙	622+17.92	98.72' RT	PIPE FOUND (CANAL SURVEY MARKER) - USED	639029.15	1530818.94
⊙	623+12.66	0.53' LT	SPIKE FOUND - USED	637182.76	1530876.51
⊙	643+72.75	1.44' RT	SPIKE FOUND - USED	639227.79	1532910.09
⊙	649+26.84	1.06' RT	SPIKE FOUND - USED	639062.28	1533438.20

MONUMENTATION TO BE SET

REF #	STATION ± R/W	OFFSET	DESCRIPTION	STATE PLANE COORDINATES (GROUND)	
				NORTHING	EASTING
⊙	649+26.36		3/8" X 4" MAGNETIZED SPIKE (P.T.)	639063.44	1533438.13

Slide
343A

20120088620
Filed for Record in
HENRY COUNTY OHIO
SARA L. MYLES, RECORDER
02-29-2012 At 03:40 PM.
PLAT 40.00



PLANS PREPARED BY:
COLUMBUS ENGINEERING CONSULTANTS, INC.
840 MICHIGAN AVENUE, COLUMBUS, OHIO 43215
PHONE: (614) 228-3500
DATE: DECEMBER 15, 2011

REVISION	DATE	DESCRIPTION
2	02/22/12	CORRECTED RANGE NUMBER
1	01/20/12	UPDATED COORDINATES