

# 2002

STATE OF OHIO  
 DEPARTMENT OF HIGHWAYS AND PUBLIC WORKS  
 DIVISION OF HIGHWAYS  
 BUREAU OF CONSTRUCTION

FED. RD. DIST. NO.	STATE	FED. AID PROJECT YEAR	FISCAL YEAR
	OHIO	1925	

I.C.H. 316 SEC. C-1 & NAPOLEON HENRY COUNTY

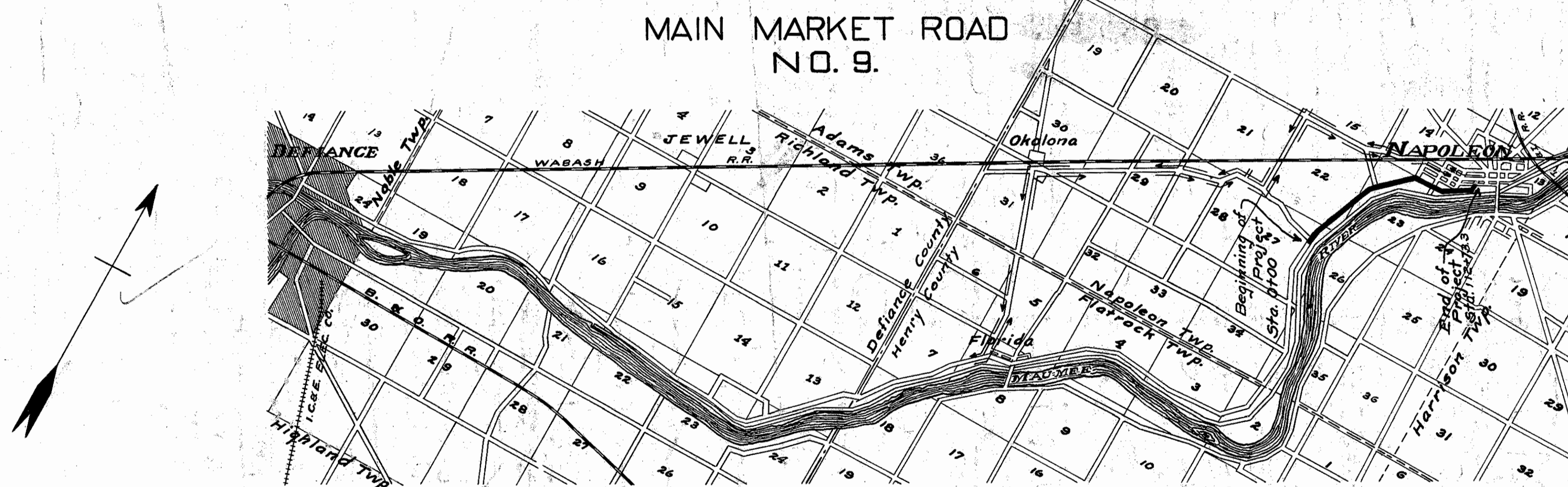
DEFIANCE-NAPOLEON ROAD  
 I.C.H. No. 316. SEGS. C1-NAPOLEON PET. No. 5270  
 HENRY COUNTY  
 NAPOLEON TWP. MAY 1925.

INDEX

Title Page	p. 1.
Typical Cross Section	p. 2.
Plans and Profile	p. 3-6.
Cross Sections	p. 7-13.
Structural Plans	p.
Summary Sheet	p. 14.

SCALES

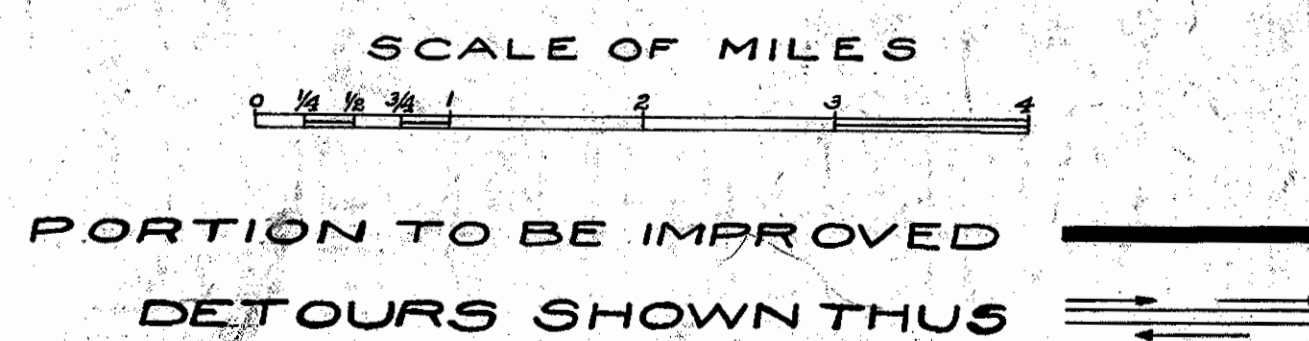
Plan	1"=100'
Profile (Vertical)	1"=10'
Profile (Horizontal)	1"=100'
Cross Sections	1"=5'



CONVENTIONAL SIGNS

State line	—————
County line	-----
Township line	- - - - -
Section line	- · - · -
Property line not fenced	—————
Center line	—————
City or village line	—————
Fence	× × × × ×
Telephone or Telegraph	TTTTTTTT
Steam railroad	—————
Electric line	—————

LOCATION PLAN



We the Commissioners of Henry County hereby approve these plans and certify that the right of way 60 feet wide is available for the construction, maintenance and repair of the above highway.

Charles Wahl  
 F. W. Detmer  
 C. W. Miller  
 Date, 7/13/25 County Commissioners.

I hereby approve these plans and declare that the making of this improvement will require the closing to traffic of the highway and that detours will be provided as shown on the plan and estimates.

Approved: *J. W. Harper*  
 Date, 7/10/25 Resident Engineer

Approved: *M. J. Henshaw*  
 Date 7/13/25 Division Engineer

Approved: *G. J. Allmeyer*  
 Date, 7/13/25 State Highway Engineer

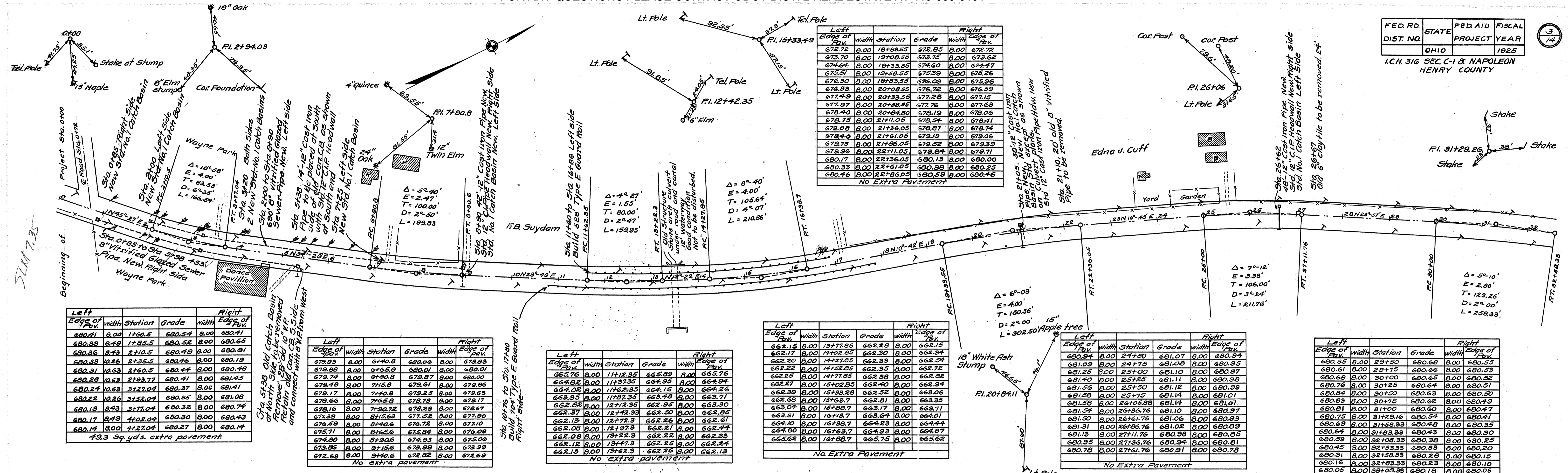
Approved: *L. A. Bullock*  
 Date, 7/13/25 Director of Highways and Public Works



The Standard Specifications of the State of Ohio Division of Highways in force on date of Contract will govern this improvement.

FED. RD. DIST. NO.	STATE	FED. AID PROJECT	FISCAL YEAR
	OHIO		1925

I.C.H. 316 SEC. C-1 & NAPOLEON HENRY COUNTY



Left Edge of Pav.	Width	Station	Grade	Right Edge of Pav.
672.72	8.00	18+88.55	672.85	672.72
673.70	8.00	19+08.55	673.75	673.62
674.64	8.00	19+33.55	674.60	674.47
675.51	8.00	19+58.55	675.59	675.26
676.30	8.00	19+83.55	676.39	676.39
676.93	8.00	20+08.55	676.72	676.59
677.49	8.00	20+33.55	677.28	677.15
677.97	8.00	20+58.55	677.72	677.68
678.40	8.00	20+84.00	678.19	678.06
678.75	8.00	21+11.05	678.54	678.41
679.08	8.00	21+36.05	678.87	678.74
679.40	8.00	21+61.05	679.19	679.06
679.73	8.00	21+86.05	679.52	679.39
679.96	8.00	22+11.05	679.84	679.71
680.17	8.00	22+36.05	680.13	680.00
680.33	8.00	22+61.05	680.38	680.25
680.46	8.00	22+86.05	680.59	680.46

No Extra Pavement

Left Edge of Pav.	Width	Station	Grade	Right Edge of Pav.
680.41	8.00	17+60.5	680.54	680.41
680.39	8.49	17+85.5	680.52	680.65
680.36	8.43	21+10.5	680.49	680.91
680.33	10.26	21+35.5	680.46	680.19
680.31	10.63	21+60.5	680.44	680.49
680.28	10.63	21+85.5	680.41	680.45
680.24	10.63	21+21.04	680.37	680.41
680.22	10.26	21+52.04	680.35	680.09
680.19	8.43	21+77.04	680.32	680.74
680.17	8.43	21+27.04	680.30	680.43
680.14	8.00	21+27.04	680.27	680.14

79.3 Sq. Yds. extra pavement

Left Edge of Pav.	Width	Station	Grade	Right Edge of Pav.
679.93	8.00	6+40.8	680.06	679.93
679.74	8.00	6+65.8	679.87	680.01
679.74	8.00	6+90.8	679.87	680.01
679.43	8.00	7+15.8	679.61	679.86
679.17	8.00	7+40.8	679.25	679.63
678.66	8.00	7+65.8	678.79	678.17
678.16	8.00	7+90.8	678.29	678.67
677.39	8.00	8+15.8	677.52	677.90
676.59	8.00	8+40.8	676.72	677.10
675.71	8.00	8+65.8	675.84	676.09
674.80	8.00	8+90.8	674.93	675.06
673.86	8.00	9+15.8	673.99	673.39
672.69	8.00	9+40.8	672.82	672.69

No extra pavement

Left Edge of Pav.	Width	Station	Grade	Right Edge of Pav.
665.76	8.00	11+12.35	665.89	665.76
664.82	8.00	11+37.35	664.95	664.94
664.02	8.00	11+62.35	664.15	664.26
663.55	8.00	11+87.35	663.48	663.71
662.82	8.00	12+12.35	662.95	663.30
662.37	8.00	12+37.35	662.50	662.85
662.13	8.00	12+62.35	662.26	662.61
662.08	8.00	12+87.35	662.21	662.44
662.09	8.00	13+12.35	662.22	662.33
662.12	8.00	13+37.35	662.25	662.24
662.13	8.00	13+62.35	662.26	662.13

No extra pavement

Left Edge of Pav.	Width	Station	Grade	Right Edge of Pav.
662.15	8.00	13+77.85	662.28	662.15
662.17	8.00	14+02.85	662.30	662.34
662.20	8.00	14+27.85	662.33	662.34
662.25	8.00	14+52.85	662.38	662.38
662.27	8.00	14+77.85	662.40	662.34
662.39	8.00	15+02.85	662.52	662.34
662.68	8.00	15+27.85	662.81	663.35
663.04	8.00	15+52.85	663.17	663.71
663.51	8.00	15+77.85	663.64	664.01
664.10	8.00	16+02.85	664.23	664.44
664.80	8.00	16+27.85	664.93	664.97
665.62	8.00	16+52.85	665.75	665.62

No Extra Pavement

Left Edge of Pav.	Width	Station	Grade	Right Edge of Pav.
680.94	8.00	24+50	681.07	680.94
681.09	8.00	24+75	681.08	680.95
681.25	8.00	25+00	681.10	680.98
681.40	8.00	25+25	681.11	680.98
681.56	8.00	25+50	681.12	680.98
681.58	8.00	25+75	681.14	681.01
681.58	8.00	26+00	681.14	681.01
681.54	8.00	26+25	681.10	680.97
681.30	8.00	26+50	681.06	680.93
681.31	8.00	26+75	681.02	680.89
681.13	8.00	27+00	680.98	680.85
680.95	8.00	27+25	680.94	680.81
680.78	8.00	27+50	680.91	680.78

No Extra Pavement

Left Edge of Pav.	Width	Station	Grade	Right Edge of Pav.
680.55	8.00	29+50	680.68	680.55
680.61	8.00	29+75	680.66	680.53
680.68	8.00	30+00	680.65	680.52
680.76	8.00	30+25	680.67	680.51
680.84	8.00	30+50	680.63	680.50
680.83	8.00	30+75	680.62	680.49
680.81	8.00	31+00	680.60	680.47
680.75	8.00	31+25	680.54	680.41
680.69	8.00	31+50	680.48	680.35
680.64	8.00	31+75	680.43	680.30
680.59	8.00	32+00	680.38	680.25
680.45	8.00	32+25	680.33	680.20
680.31	8.00	32+50	680.28	680.15
680.16	8.00	32+75	680.23	680.10
680.05	8.00	33+00	680.18	680.05

No Extra Pavement

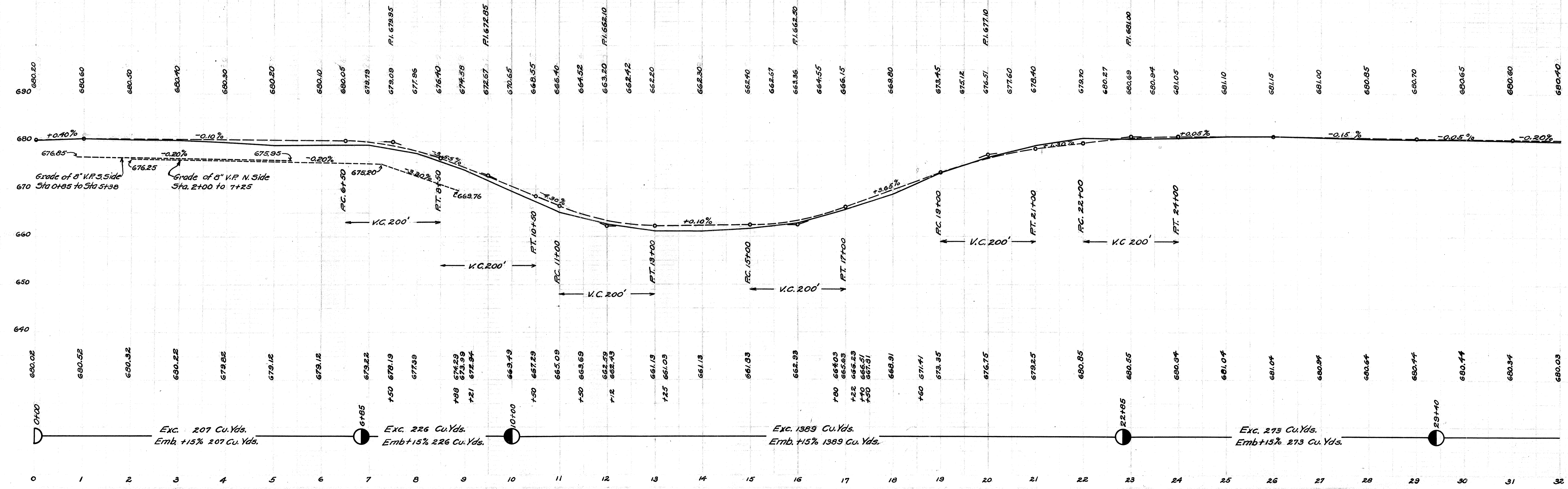
B.M. Sta. 1+21 Spike Burr Oak W.S. El. 680.85

Note: Grade line shown is crown of finished pavement. Types A & B Type C is .20' lower.

B.M. Sta. 15+43 Spike tel. pole N. Side El. 657.73

B.M. Sta. 20+20 Spike tel. pole S. Side El. 678.10

B.M. Sta. 23+ Spike Cedar N. Side El. 683.83



FED. RD. DIST. NO.	STATE	FED. AID PROJECT	FISCAL YEAR
	OHIO		1925

I.C.H. 316 SEC. C-1 & NAPOLÉON HENRY COUNTY

Left Edge of Pav.	Width	Station	Grade	Right Edge of Pav.	
679.31	8.00	36+80.65	679.44	8.00	679.31
679.30	8.00	37+05.65	679.39	8.00	679.26
679.30	8.00	37+30.65	679.34	8.00	679.21
679.29	8.00	37+55.65	679.29	8.00	679.16
679.29	8.00	37+80.65	679.24	8.00	679.11
679.26	8.00	38+05.65	679.21	8.00	679.08
679.31	8.00	38+30.65	679.26	8.00	679.13
679.36	8.00	38+55.65	679.31	8.00	679.18
679.41	8.00	38+80.65	679.36	8.00	679.23
679.49	8.00	39+13.99	679.43	8.00	679.30
679.54	8.00	39+47.3	679.49	8.00	679.36
679.59	8.00	39+72.3	679.54	8.00	679.41
679.64	8.00	39+97.3	679.59	8.00	679.46
679.68	8.00	40+22.3	679.63	8.00	679.50
679.74	8.00	40+47.3	679.69	8.00	679.56
679.74	8.00	40+72.3	679.74	8.00	679.61
679.75	8.00	40+97.3	679.79	8.00	679.66
679.75	8.00	41+22.3	679.84	8.00	679.71
679.76	8.00	41+47.3	679.89	8.00	679.76

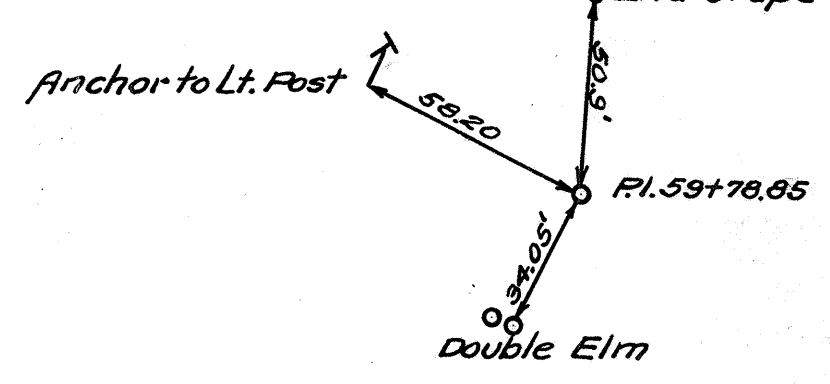
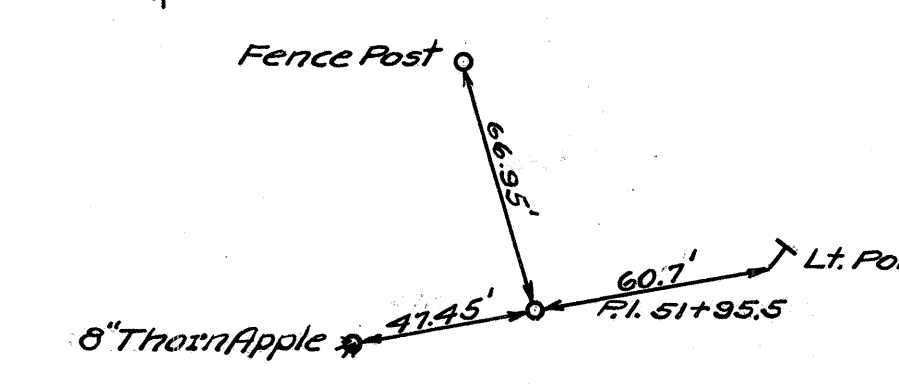
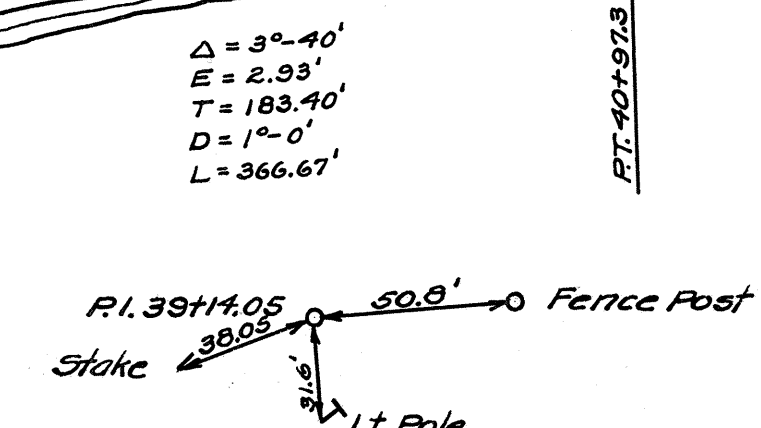
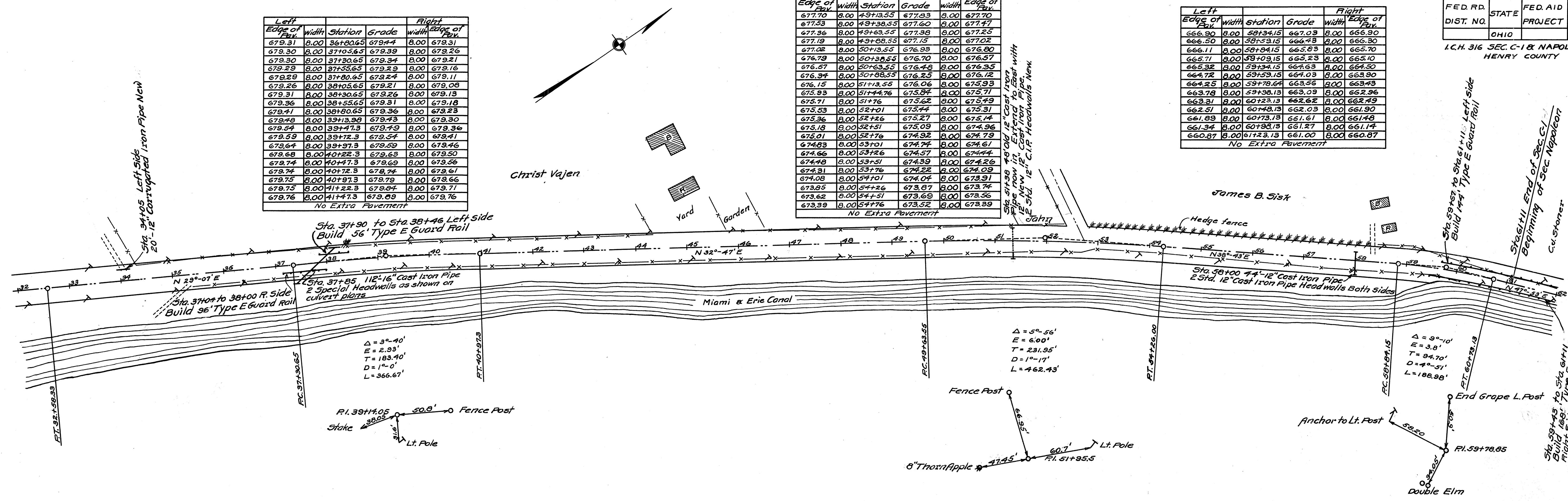
No Extra Pavement

Left Edge of Pav.	Width	Station	Grade	Right Edge of Pav.	
677.70	8.00	49+33.55	677.93	8.00	677.70
677.53	8.00	49+38.55	677.60	8.00	677.47
677.36	8.00	49+43.55	677.36	8.00	677.25
677.19	8.00	49+48.55	677.15	8.00	677.02
677.02	8.00	50+33.55	676.99	8.00	676.80
676.79	8.00	50+38.55	676.70	8.00	676.57
676.57	8.00	50+43.55	676.43	8.00	676.35
676.34	8.00	50+48.55	676.25	8.00	676.12
676.15	8.00	51+13.55	676.06	8.00	675.93
675.93	8.00	51+18.55	675.84	8.00	675.71
675.71	8.00	51+23.55	675.62	8.00	675.49
675.53	8.00	52+01	675.44	8.00	675.31
675.36	8.00	52+26	675.27	8.00	675.14
675.18	8.00	52+51	675.09	8.00	674.96
675.01	8.00	52+76	674.92	8.00	674.79
674.83	8.00	53+01	674.74	8.00	674.61
674.66	8.00	53+26	674.57	8.00	674.44
674.48	8.00	53+51	674.49	8.00	674.26
674.31	8.00	53+76	674.32	8.00	674.09
674.08	8.00	54+01	674.04	8.00	673.91
673.85	8.00	54+26	673.87	8.00	673.74
673.62	8.00	54+51	673.69	8.00	673.56
673.39	8.00	54+76	673.52	8.00	673.39

No Extra Pavement

Left Edge of Pav.	Width	Station	Grade	Right Edge of Pav.	
666.90	8.00	58+34.15	667.03	8.00	666.90
666.50	8.00	58+39.15	666.73	8.00	666.30
666.11	8.00	58+44.15	666.53	8.00	666.10
665.71	8.00	58+49.15	666.23	8.00	665.70
665.32	8.00	58+54.15	665.93	8.00	665.30
664.92	8.00	58+59.15	665.63	8.00	664.90
664.52	8.00	58+64.15	665.33	8.00	664.50
664.12	8.00	58+69.15	665.03	8.00	664.10
663.72	8.00	58+74.15	664.73	8.00	663.70
663.32	8.00	58+79.15	664.43	8.00	663.30
662.92	8.00	58+84.15	664.13	8.00	662.90
662.52	8.00	58+89.15	663.83	8.00	662.50
662.12	8.00	58+94.15	663.53	8.00	662.10
661.72	8.00	58+99.15	663.23	8.00	661.70
661.32	8.00	59+04.15	662.93	8.00	661.30
660.92	8.00	59+09.15	662.63	8.00	660.90
660.52	8.00	59+14.15	662.33	8.00	660.50
660.12	8.00	59+19.15	662.03	8.00	660.10
660.07	8.00	59+24.15	661.73	8.00	660.07

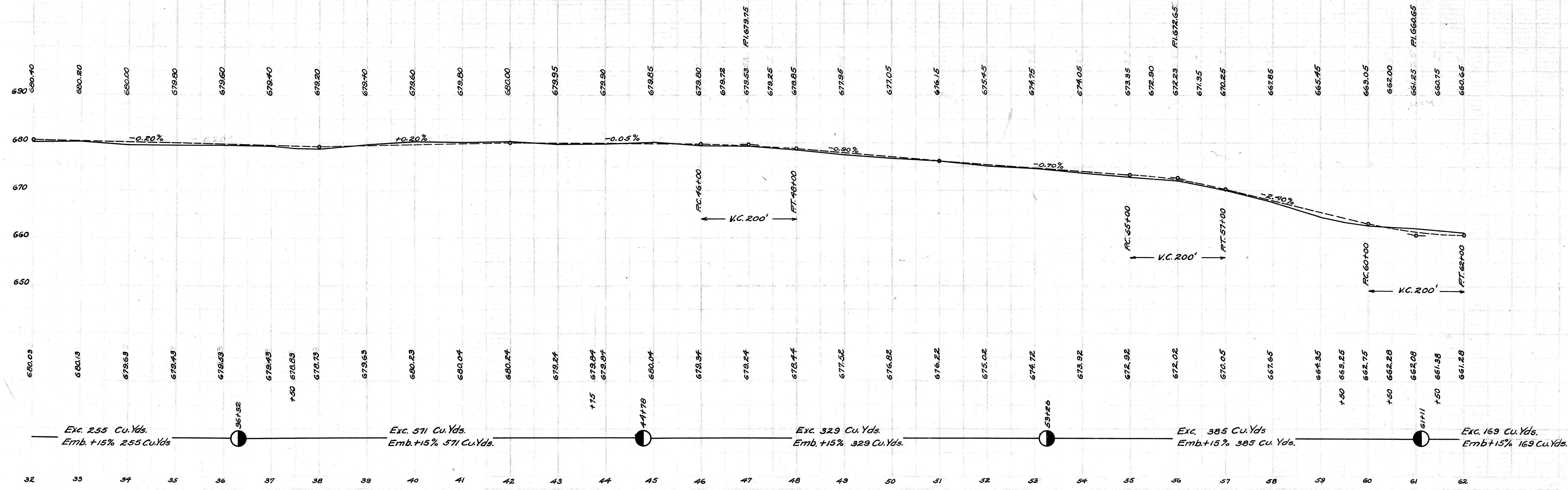
No Extra Pavement



B.M. Sta. 33+85 Spike Walnut South side El. 668.42

Note: Grade line shown is crown of finished pavement. Types 'A' & 'B' Type 'C' is .20' lower.

B.M. Sta. 59+02 Spike yard post N.S. Road El. 671.06



FED. RD. DIST. NO.	STATE	FED. AID. PROJECT	FISCAL YEAR
I.C.H. 316	OHIO	SEC. C-1-X	1925

NAPOLEON HENRY COUNTY

Left Edge of Pav.	Width	Station	Grade	Width	Right Edge of Pav.
660.32	8.00	62+42.2	660.65	8.00	660.32
660.78	8.00	62+67.2	660.65	8.00	660.32
661.09	8.00	62+92.2	660.65	9.74	660.32
661.41	8.00	63+17.2	660.65	10.74	660.32
661.72	8.00	63+42.2	660.65	11.20	660.32
661.72	8.00	63+67.2	660.65	11.20	660.32
661.72	8.00	63+91.52	660.65	11.20	660.32
661.73	8.00	64+15.85	660.66	11.20	660.33
661.81	8.00	64+40.85	660.74	11.20	660.61
661.87	8.00	64+65.85	660.89	10.74	660.76
662.00	8.00	64+90.85	661.11	9.74	660.98

72.2 Sq. Yds. Extra Pavement

Left Edge of Pav.	Width	Station	Grade	Width	Right Edge of Pav.
670.95	8.00	70+24.45	671.08	8.00	670.95
671.34	8.00	70+49.45	671.0	8.00	671.24
671.74	8.00	70+74.45	671.66	8.00	671.54
672.12	8.00	70+99.45	671.94	8.00	671.81
672.52	8.00	71+24.45	672.23	8.00	672.10
672.81	8.00	71+49.45	672.52	8.00	672.39
673.10	8.00	71+74.45	672.81	8.00	672.68
673.27	8.00	71+99.45	673.09	8.00	672.96
673.46	8.00	72+24.45	673.38	8.00	673.25
673.64	8.00	72+49.45	673.67	8.00	673.54
673.83	8.00	72+74.45	673.96	8.00	673.83

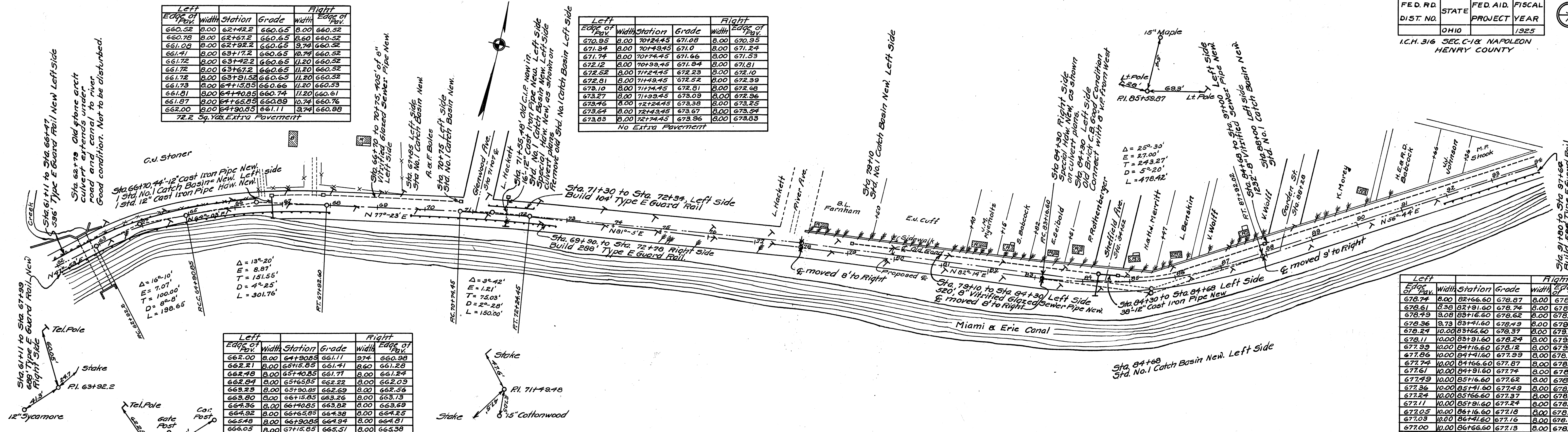
No Extra Pavement

Left Edge of Pav.	Width	Station	Grade	Width	Right Edge of Pav.
678.74	8.00	82+66.60	678.87	8.00	678.74
678.61	8.38	82+91.60	678.74	8.00	678.84
678.79	8.08	83+16.60	678.62	8.00	678.97
678.36	8.73	83+41.60	678.49	8.00	679.10
678.24	10.00	83+66.60	678.37	8.00	679.25
678.11	10.00	83+91.60	678.24	8.00	679.12
678.39	10.00	84+16.60	678.12	8.00	679.00
677.86	10.00	84+41.60	677.93	8.00	678.87
677.74	10.00	84+66.60	677.87	8.00	678.75
677.61	10.00	84+91.60	677.74	8.00	678.62
677.49	10.00	85+16.60	677.62	8.00	678.50
677.36	10.00	85+41.60	677.49	8.00	678.37
677.24	10.00	85+66.60	677.37	8.00	678.25
677.11	10.00	85+91.60	677.24	8.00	678.12
677.05	10.00	86+16.60	677.18	8.00	678.06
677.03	10.00	86+41.60	677.16	8.00	678.04
677.00	10.00	86+66.60	677.13	8.00	678.01
676.98	10.00	86+91.60	677.11	8.00	677.99
676.95	10.00	87+16.60	677.08	8.00	677.96
676.93	10.00	87+41.60	677.06	8.00	677.94
676.90	8.73	87+66.60	677.03	8.00	677.91
676.88	8.08	87+91.60	677.01	8.00	677.89
676.85	8.38	88+16.60	676.98	8.00	677.86
676.83	8.00	88+41.60	676.96	8.00	677.83

113.37 Sq. Yds. Extra Pavement

Left Edge of Pav.	Width	Station	Grade	Width	Right Edge of Pav.
662.00	8.00	64+90.85	661.77	9.74	660.98
662.21	8.00	65+15.85	661.71	8.60	661.28
662.48	8.00	65+40.85	661.77	8.00	661.24
662.54	8.00	65+65.85	662.22	8.00	662.09
663.23	8.00	65+90.85	662.69	8.00	662.56
663.80	8.00	66+15.85	663.26	8.00	663.13
664.36	8.00	66+40.85	663.82	8.00	663.69
664.92	8.00	66+65.85	664.38	8.00	664.25
665.48	8.00	66+90.85	664.94	8.00	664.81
666.05	8.00	67+15.85	665.51	8.00	665.38
666.65	8.00	67+42.6	666.11	8.00	665.98
667.04	8.00	67+67.6	666.67	8.00	666.54
667.43	8.00	67+92.6	667.23	8.00	667.10
667.84	8.00	68+17.6	667.80	8.00	667.67
668.18	8.00	68+42.6	668.31	8.00	668.18

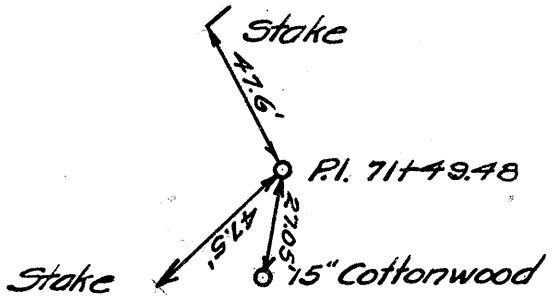
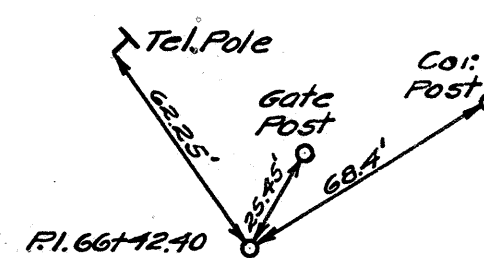
No Extra Pavement



$\Delta = 13^{\circ}20'$   
 $E = 2.87'$   
 $T = 151.55'$   
 $D = 4^{\circ}25'$   
 $L = 301.76'$

$\Delta = 3^{\circ}42'$   
 $E = 1.21'$   
 $T = 75.03'$   
 $D = 2^{\circ}28'$   
 $L = 150.00'$

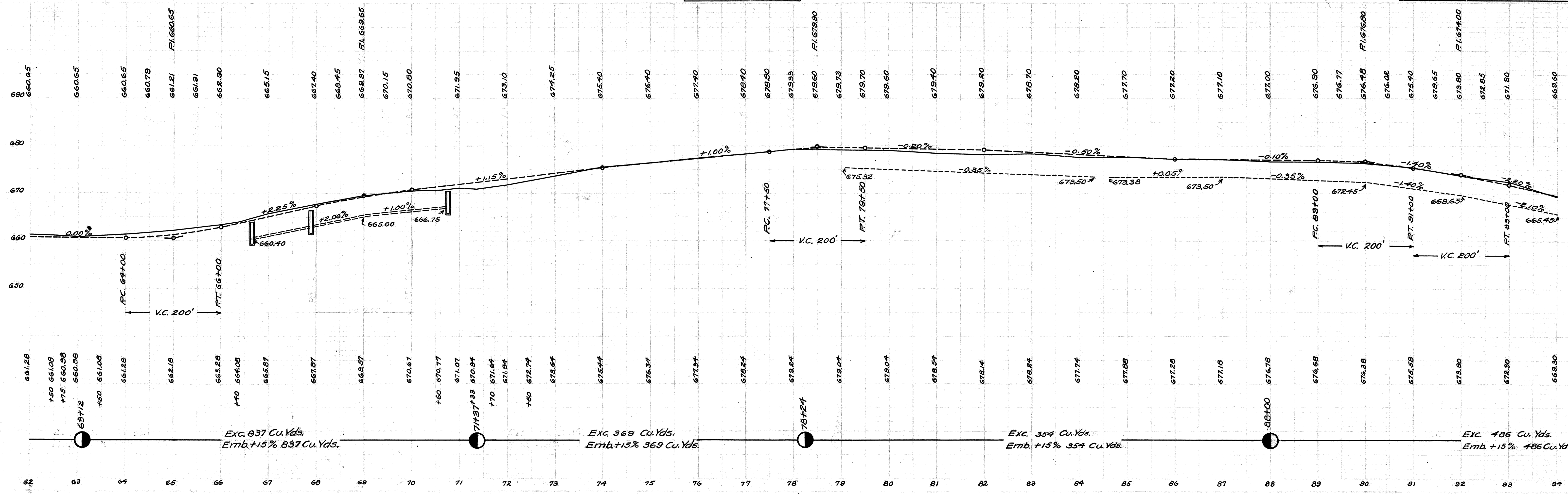
$\Delta = 25^{\circ}30'$   
 $E = 27.00'$   
 $T = 243.27'$   
 $D = 5^{\circ}20'$   
 $L = 478.42'$



B.M. Sta. 62+38  
 Spike tel. pole N. Side  
 El. 665.93

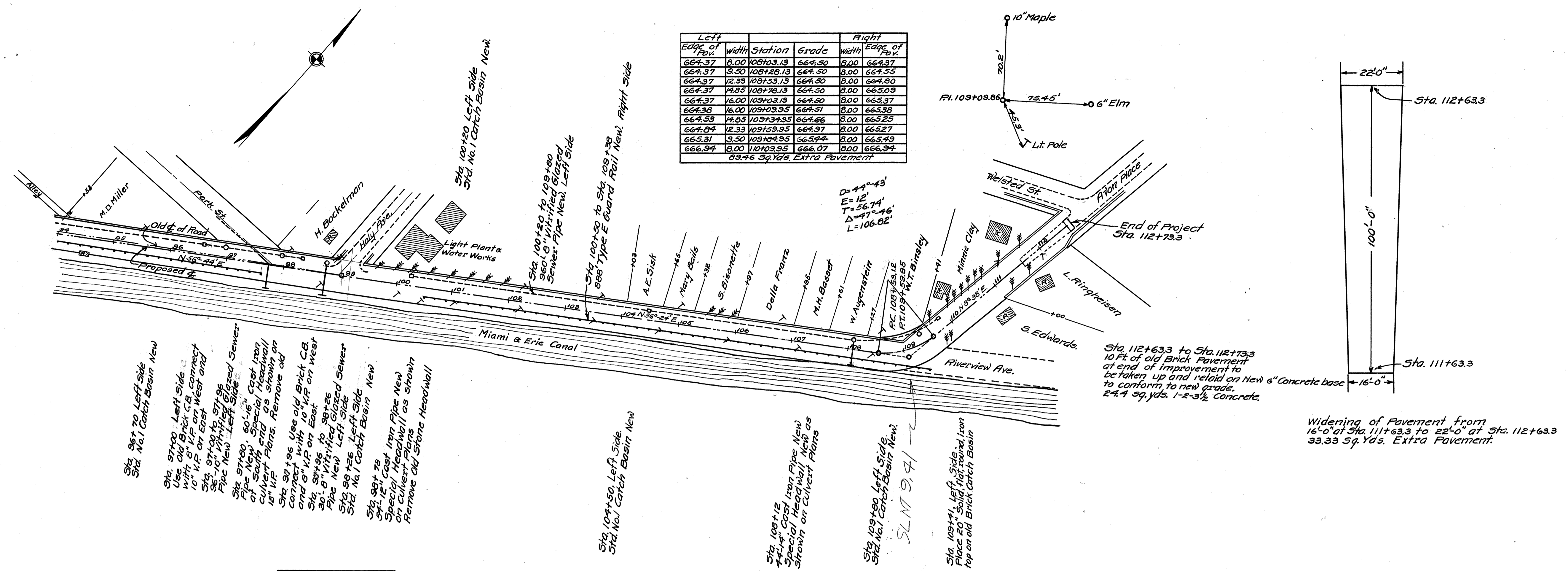
B.M. Sta. 77+10  
 Spike Cottonwood S.S.  
 El. 671.43

Note: Grade line shown is crown of finished pavement. Types 'A' & 'B' Type 'C' is .20' Lower.

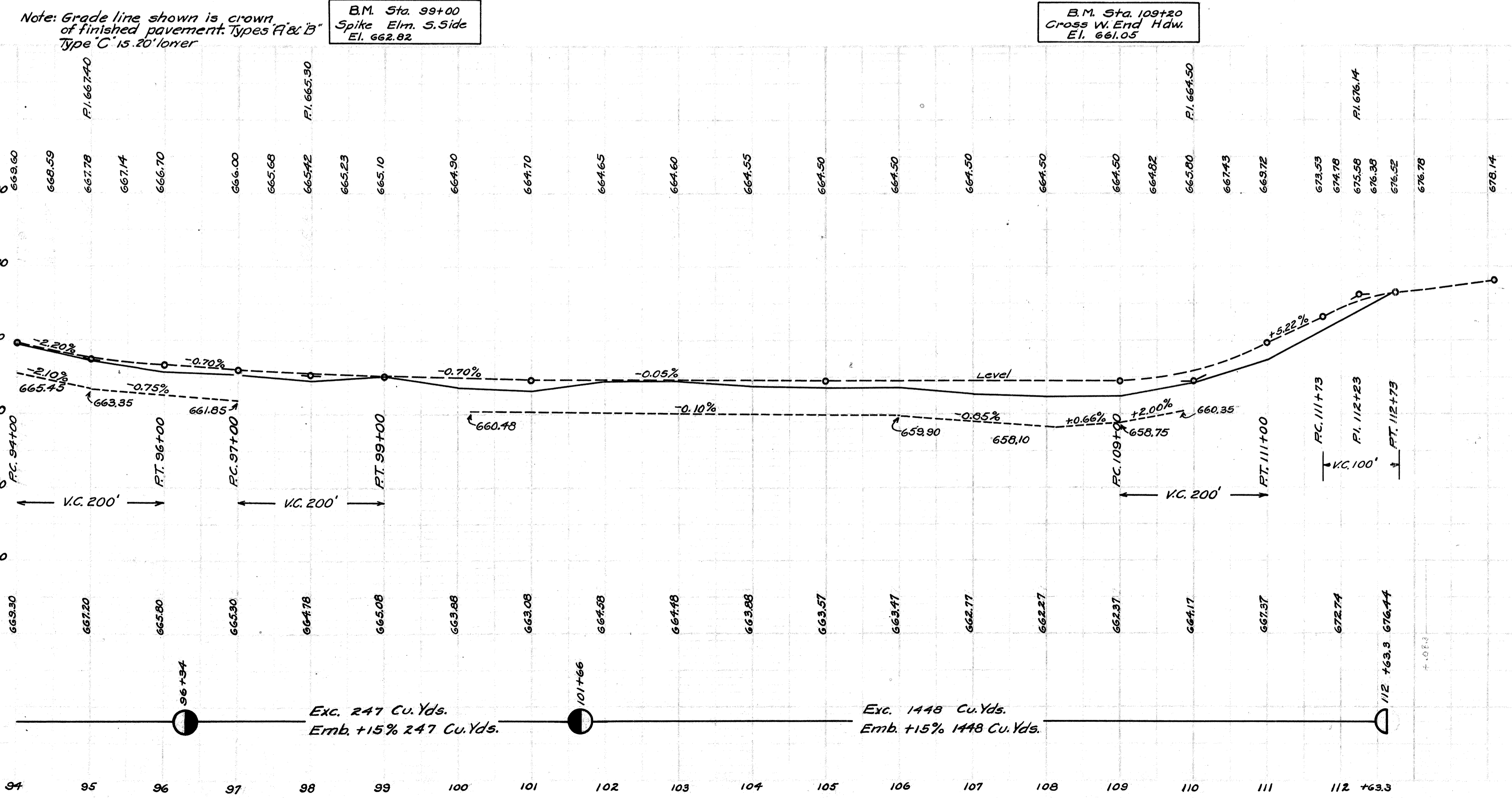


FED. RD. DIST. NO.	STATE	FED. AID PROJECT	FISCAL YEAR
	OHIO		1925

ICH.316 SEC. C-1 & NAPOLEON HENRY COUNTY



Left Edge of Pav.	Width	Station	Grade	Width	Right Edge of Pav.
664.37	8.00	100+03.13	664.30	8.00	664.37
664.37	8.50	100+20.13	664.30	8.00	664.35
664.37	12.33	100+33.13	664.30	8.00	664.30
664.37	14.33	100+48.13	664.30	8.00	665.09
664.37	16.00	100+58.13	664.30	8.00	665.37
664.38	16.00	100+59.35	664.31	8.00	665.38
664.33	14.83	100+34.35	664.66	8.00	665.23
664.04	12.33	100+35.35	664.97	8.00	665.27
665.31	9.50	100+04.95	665.74	8.00	665.49
666.94	8.00	110+03.95	666.07	8.00	666.94
83.76 Sq.Yds. Extra Pavement					



Widening of Pavement from 16'-0" at Sta. 111+63.3 to 22'-0" at Sta. 112+63.3 33.33 Sq. Yds. Extra Pavement.

Sta. 112+63.3 to Sta. 112+73.3 10 Ft. of old Brick Pavement at end of improvement to be taken up and relaid on New 6" Concrete base to conform to new grade. 2.44 Sq. Yds. 1-2-3/4 Concrete.

B.M. Sta. 109+20 Cross W. Elm. Haw. El. 661.05

B.M. Sta. 99+00 Spike Elm. S. Side El. 662.82