

FED. RD. DIST. NO.	STATE	PROJECT	FISCAL YEAR
2	OHIO		1946

HENRY COUNTY, S.H. 316, Sec. Napoleon (Pt.)

STATE OF OHIO DEPARTMENT OF HIGHWAYS

NAPOLEON — DEFIANCE ROAD

S.H. 316 SEC. NAPOLEON (PT.)

HENRY COUNTY

VILLAGE OF NAPOLEON

PART I

For Part 2 See Henry County S.H. 285, Sec. McClure, (Pt.)

CONVENTIONAL SIGNS.

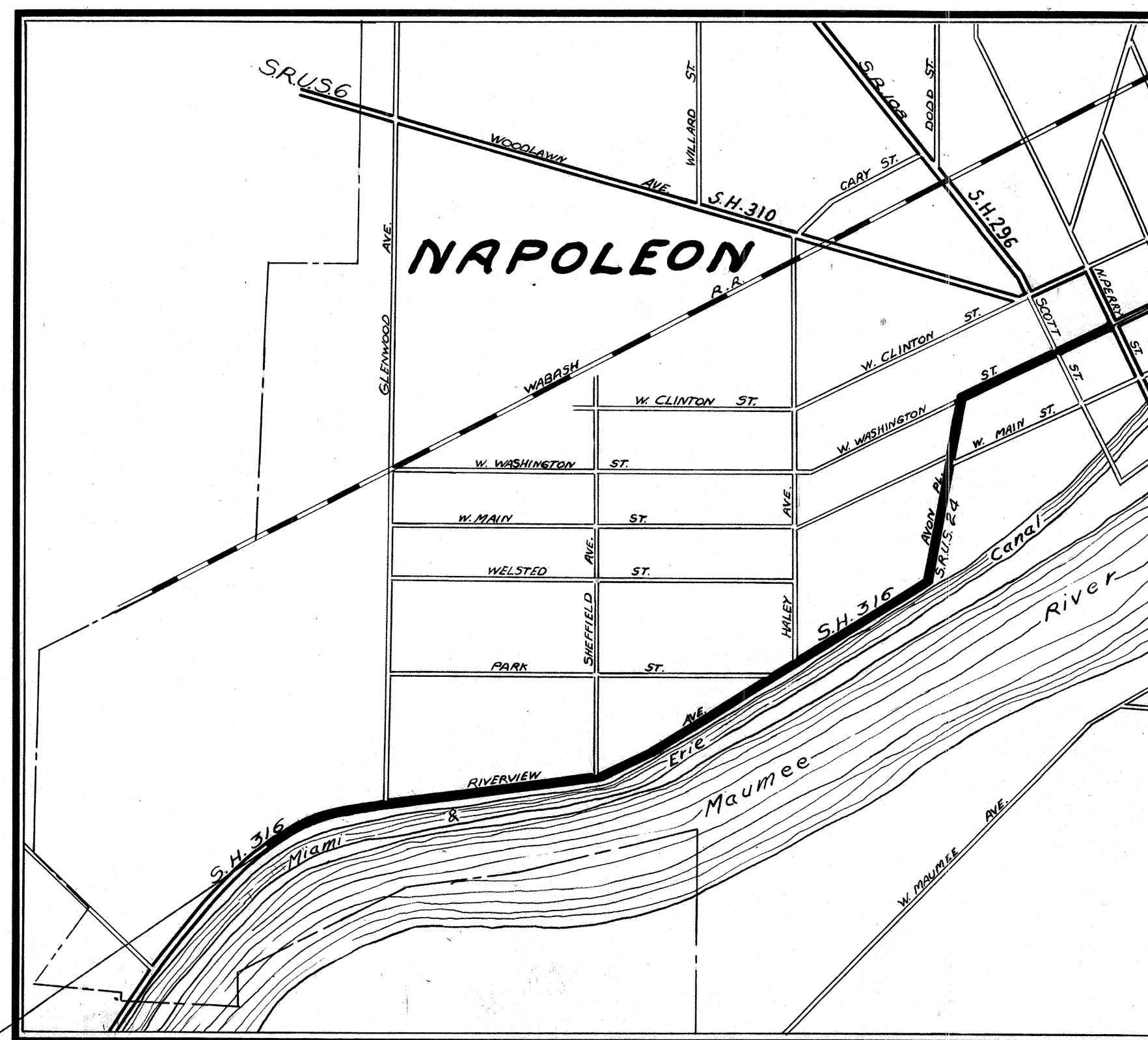
STATE LINE	-----
COUNTY LINE	=====
TOWNSHIP LINE	-----
SECTION LINE	-----
CENTER LINE	-----
PROPERTY LINE	-----
CITY OR VILLAGE LINE	-----
FENCE LINE	-X-X-X-X-
STEAM RAILROAD	=====
ELECTRIC RAILROAD	-----
POLE LINE	o-o-o-o-o
GUARD RAIL	-----
DRAIN PIPE, NEW	-----
DRAIN PIPE, OLD	-----

INDEX OF SHEETS.

Title Sheet	1
Typical Sections	2-3
General Notes	4
Plan and Profile	5-9
Summaries	4
Pavement Computations	4

LINE DATA.

Begin Project Part I Sta. 0+00.
 End Project Part I Sta. 70+52.
 Part I Gross Length = Net Length = 70.52 Lin. Ft. = 1.335 Mi.



LOCATION PLAN.

Delivery Point, Napoleon Average Haul, 1 Mile.
 SCALE: 1" = 800'

PORTION TO BE IMPROVED
 STATE HIGHWAYS
 OTHER HIGHWAYS

SCALES

PLAN 1" = 50'
 PROFILE - HORIZONTAL 1" = 50'
 PROFILE - VERTICAL 1" = 5'

The Standard Specifications of The State of Ohio, Department of Highways including changes and Supplemental Specifications listed in the Proposal shall govern this improvement.

I hereby approve these plans and declare that the making of this improvement will not require the closing to traffic of the highways and that traffic will be maintained as shown on the plans and estimates.

The Right of Way necessary for this improvement will be provided by the State of Ohio.

Approved: Arnold V. Finch
 Date 8-14-46 Ass't. to The Chief Engineer.

Approved: _____
 Date _____ Chief Engineer, Bureau of Maintenance.

Approved: _____
 Date _____ Chief Engineer, Bureau of Bridges & R.R. Crossings.

Approved: Charles E. ...
 Date 9-24-46 Chief Engineer, Bureau of Location & Design.

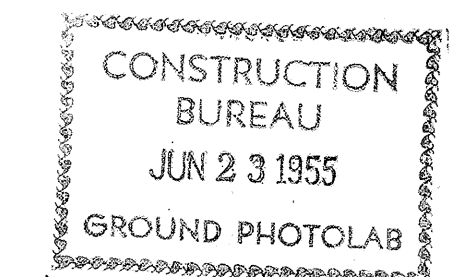
Approved: Edwin W. Ellis
 Date 9-24-46 First Asst. Director & Chief Engineer.

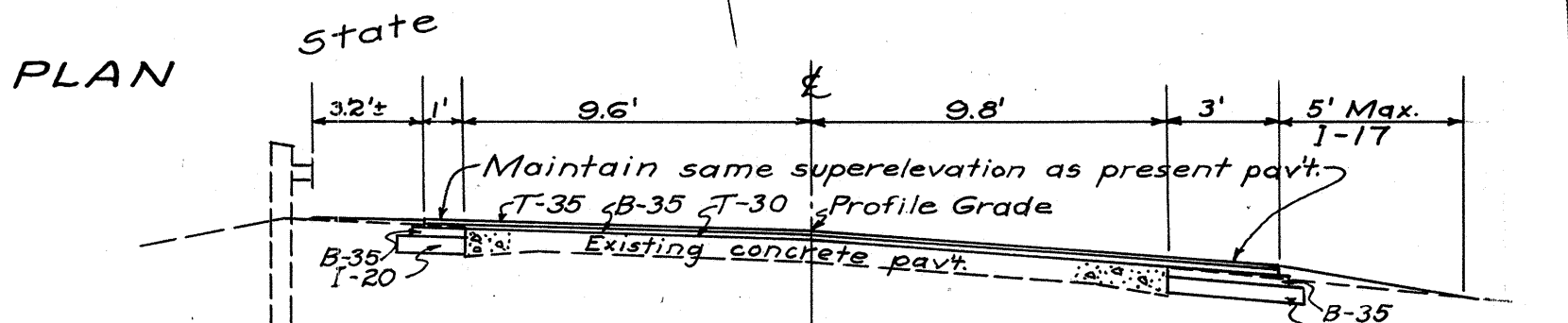
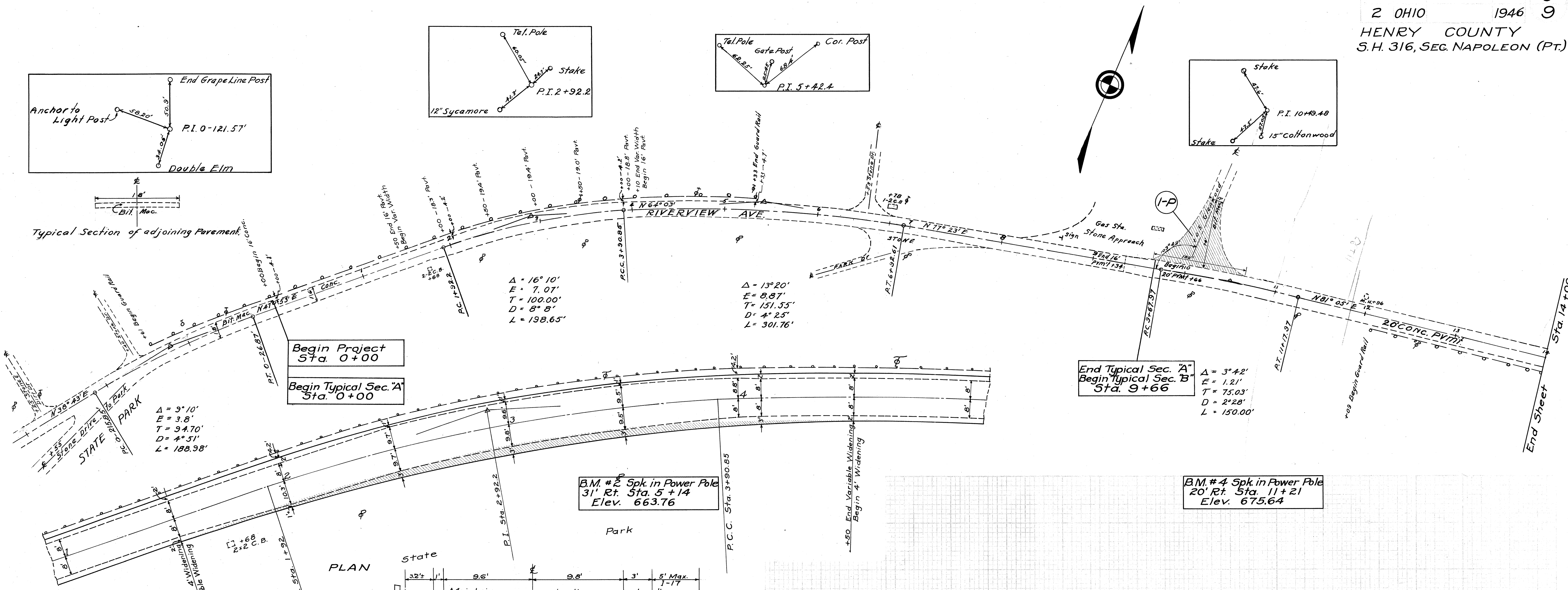
Approved: Perry T. Ford
 Date 9-24-46 Director of Highways.

PART I	
STANDARD DRAWINGS.	
G-707	6-1-42
I-12	7-1-42
I-8 C.B. No. 6	12-15-41
I-1,2,3,4&5	2-20-45

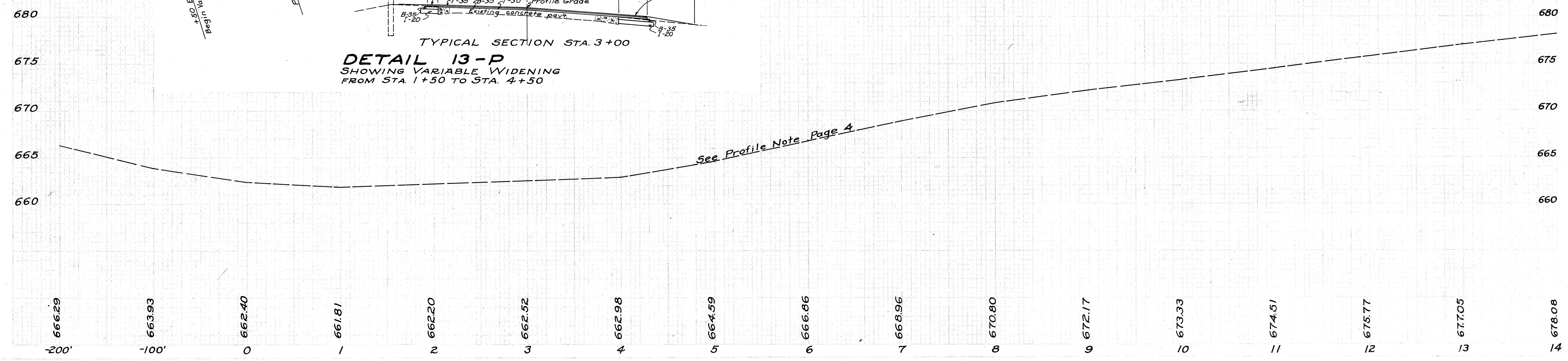
PART I	
SUPPLEMENTAL SPECIFICATIONS.	
S-122	4-15-37
177	Rev. 4-21-44
T-170.15	8-2-43
183	Rev. 5-1-45

FILE No.	HENRY COUNTY, S.H. 316, SEC. NAPOLEON (PT.)
DATE OF LETTING	1946
CONTRACT No.	

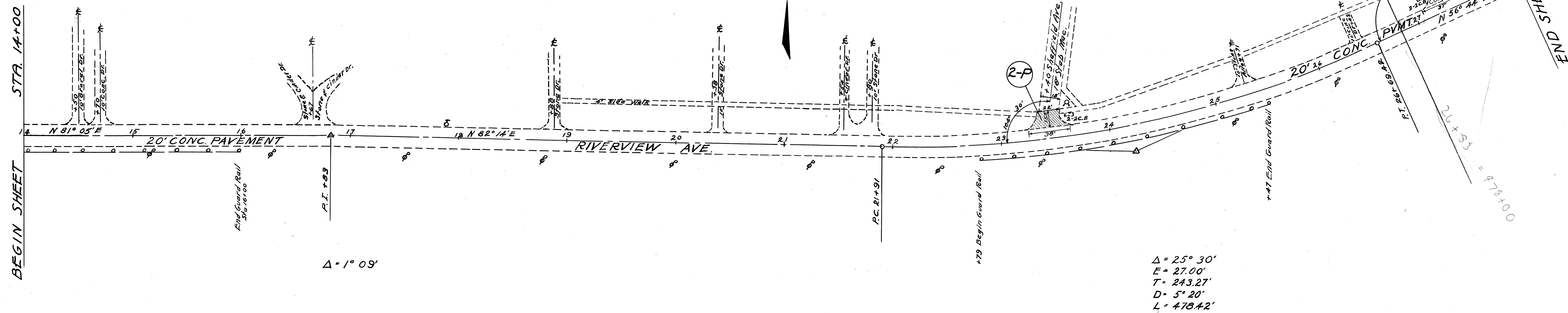




DETAIL 13-P
SHOWING VARIABLE WIDENING
FROM STA. 1+50 TO STA. 4+50

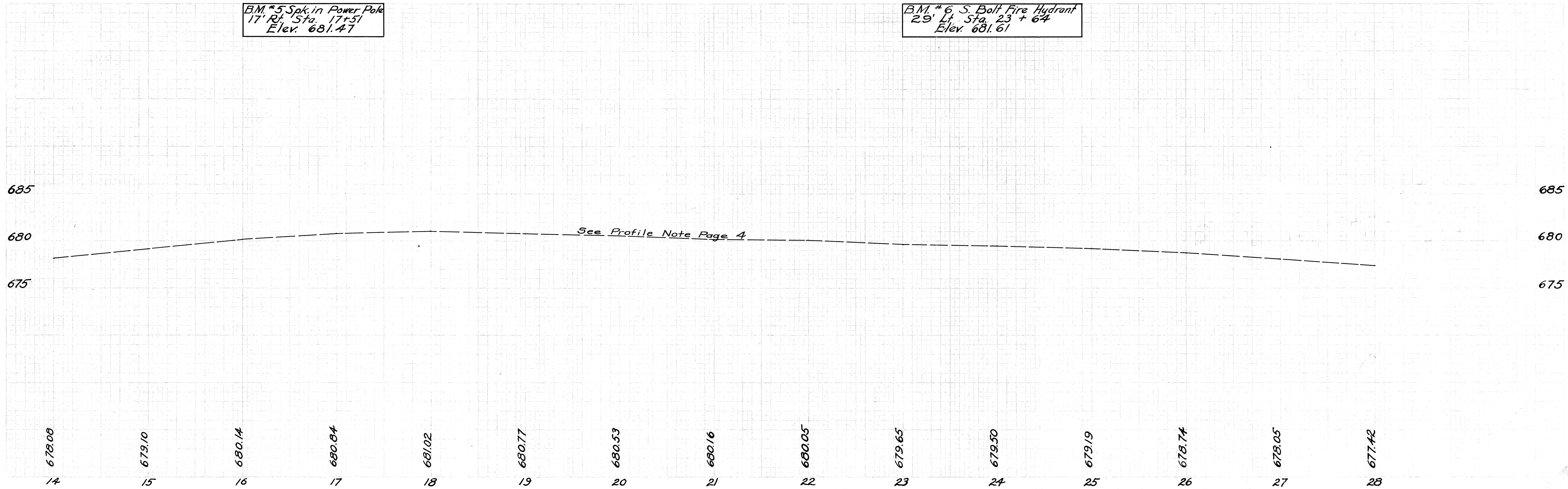


DIV. 2 OHIO 1946 6
 HENRY COUNTY 9
 S.H. 316, SEC. NAPOLEON (PT.)

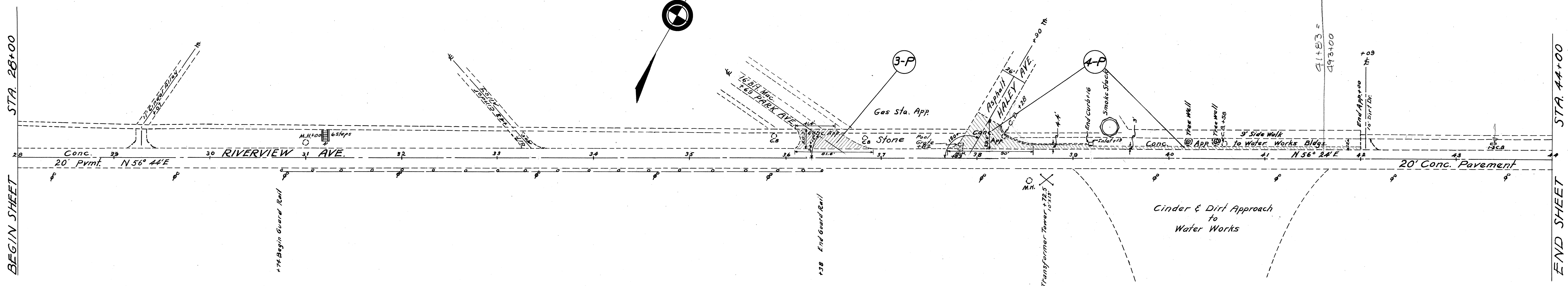
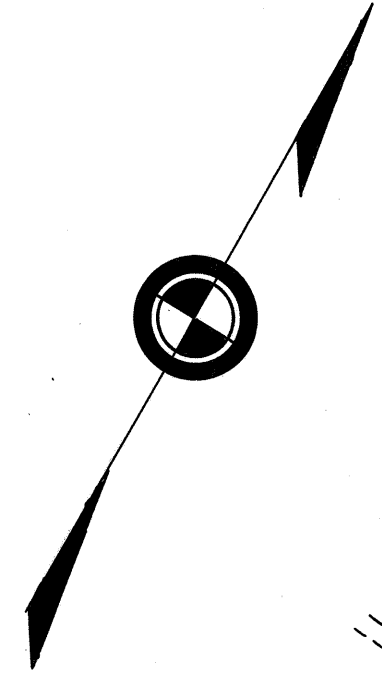


B.M. # 5 Spk. in Power Pole
 17' Rt. Sta. 17+51
 Elev. 681.47

B.M. # 6 S. Bolt Fire Hydrant
 29' Lt. Sta. 23+64
 Elev. 681.61



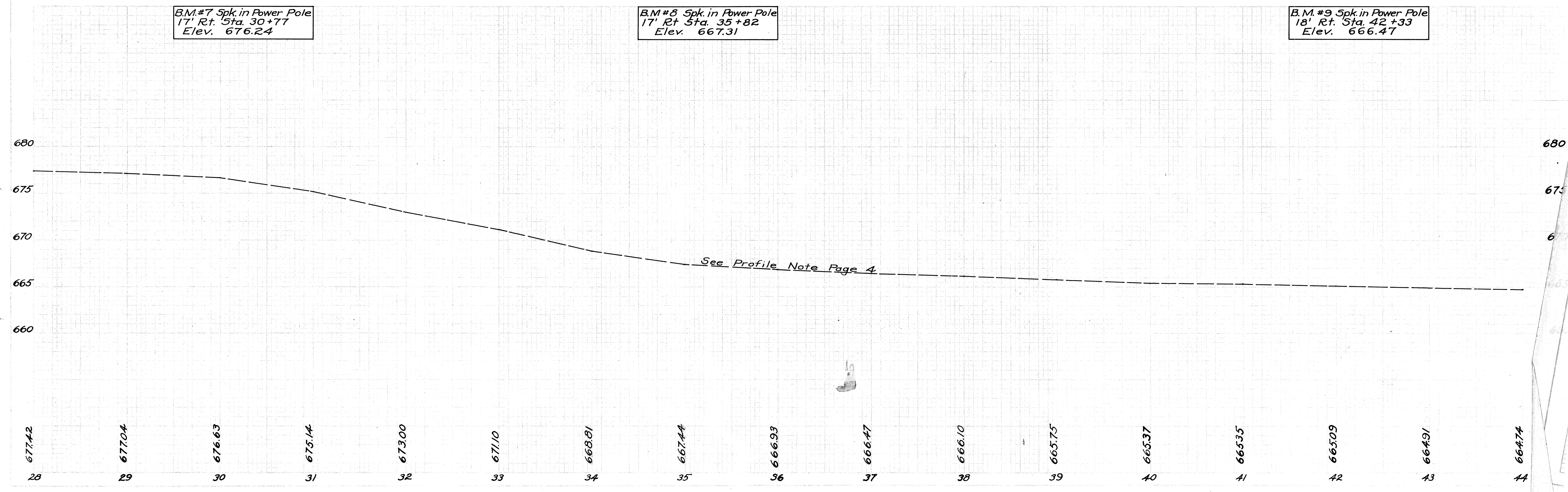
DIV. 2 OHIO 1946 7
 9
 HENRY COUNTY
 S.H. 316, SEC. NAPOLEON (PT)



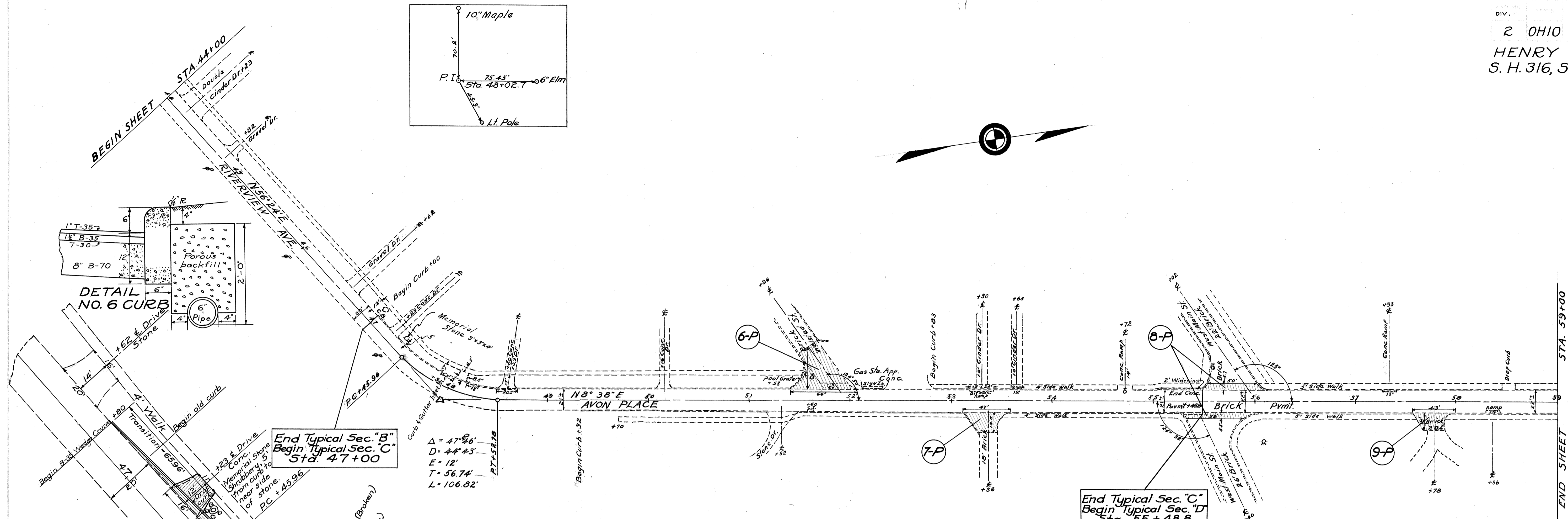
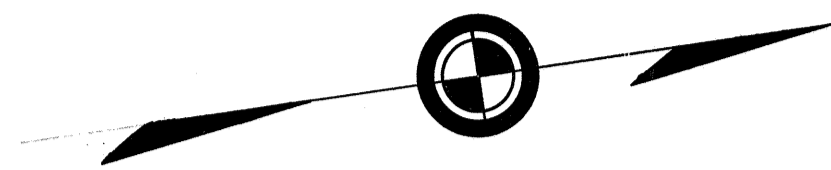
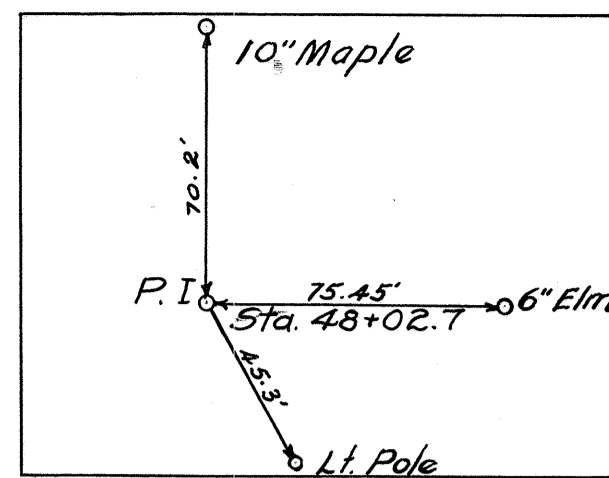
B.M.#7 Spk. in Power Pole
 17' Rt. Sta. 30+77
 Elev. 676.24

B.M.#8 Spk. in Power Pole
 17' Rt. Sta. 35+82
 Elev. 667.31

B.M.#9 Spk. in Power Pole
 18' Rt. Sta. 42+33
 Elev. 666.47



DIV. 8
 2 OHIO 1946 9
 HENRY COUNTY
 S. H. 316, SEC. NAPOLEON (PT.)

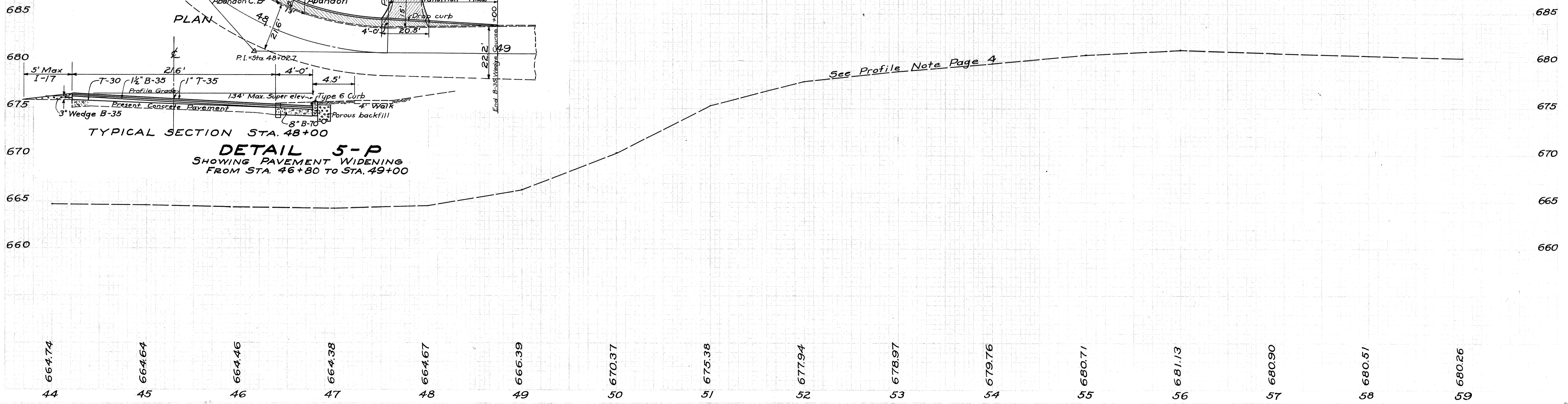


End Typical Sec. "B"
 Begin Typical Sec. "C"
 Sta. 47+00

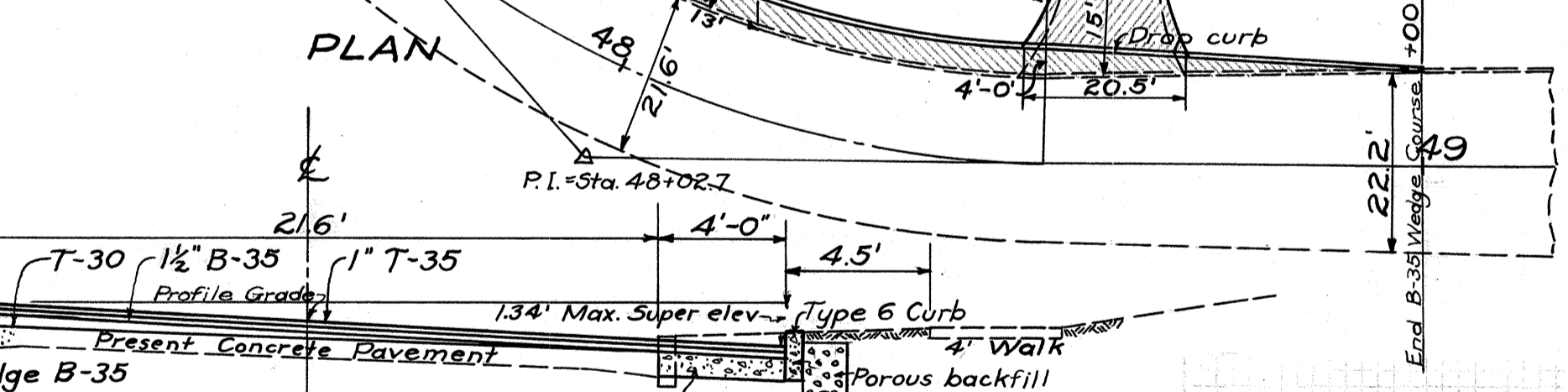
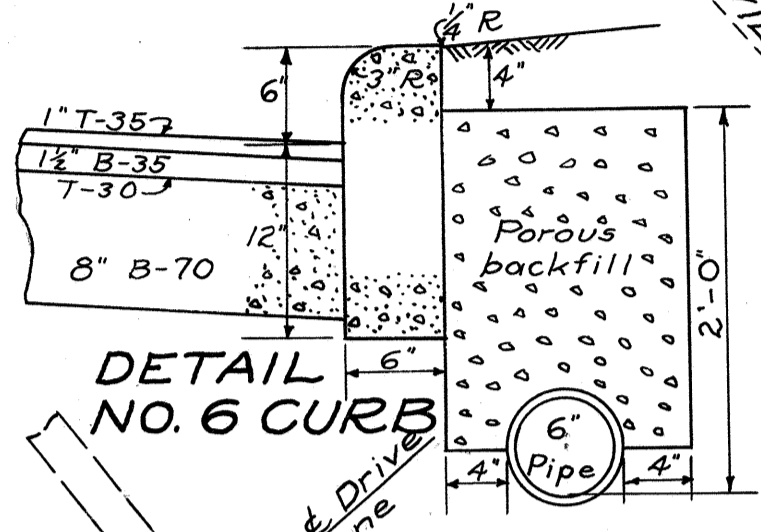
End Typical Sec. "C"
 Begin Typical Sec. "D"
 Sta. 55+48.8

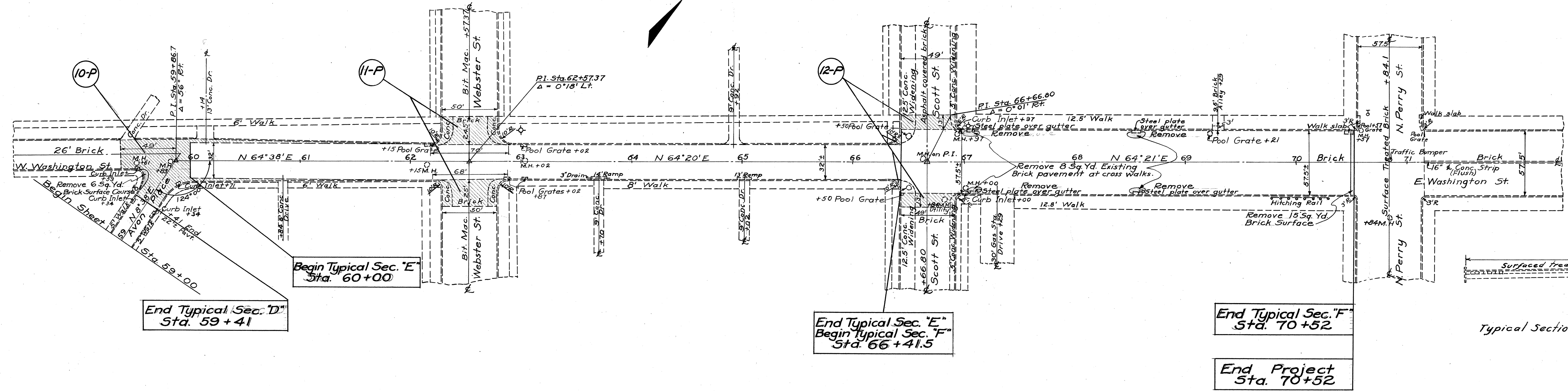
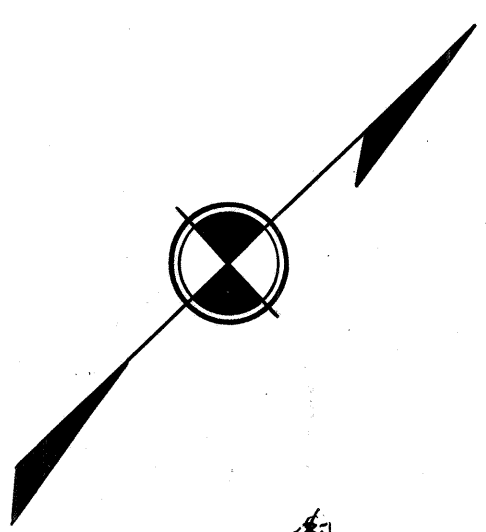
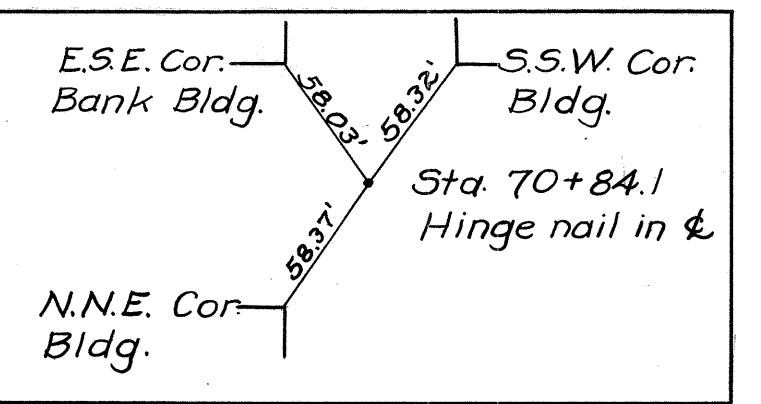
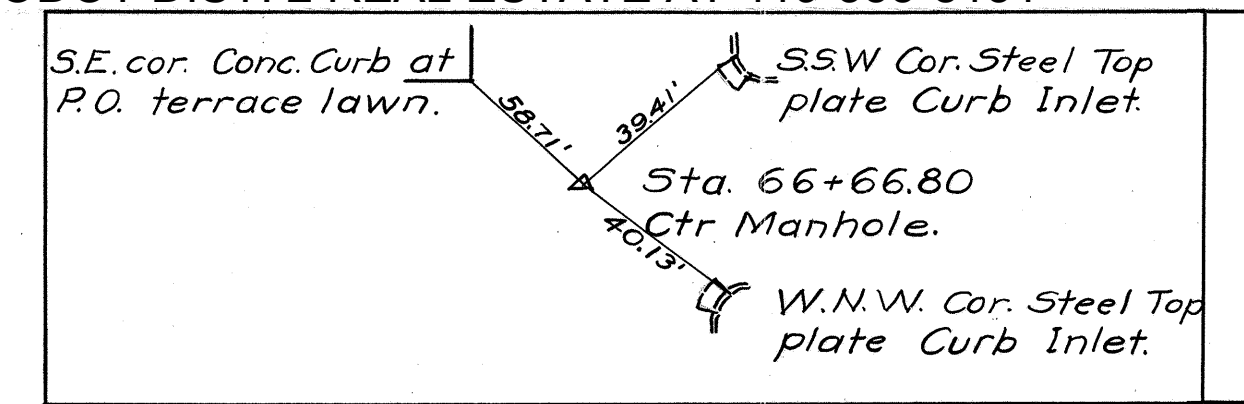
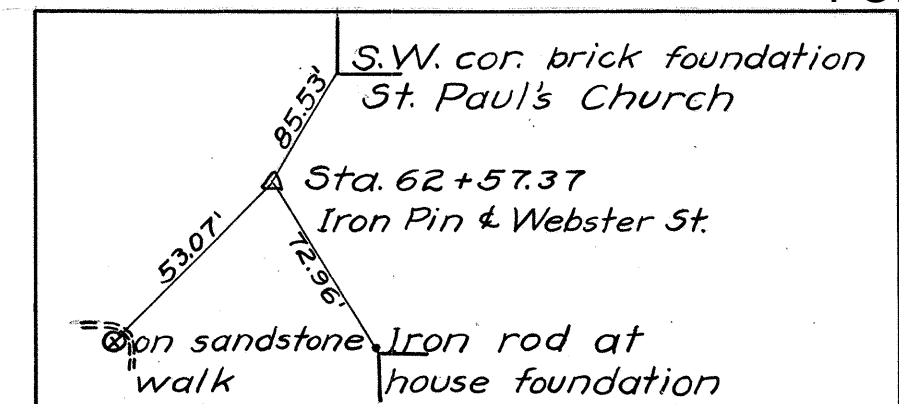
B.M. #10 Spk. in Power Pole
 44' Rt. Sta. 48+25
 Elev. 669.15

B.M. #12 Top E. Bolt Fire
 Hydrant 40' Rt. Sta. 56+09
 Elev. 684.07



TYPICAL SECTION STA. 48+00
DETAIL 5-P
 SHOWING PAVEMENT WIDENING
 FROM STA. 46+80 TO STA. 49+00





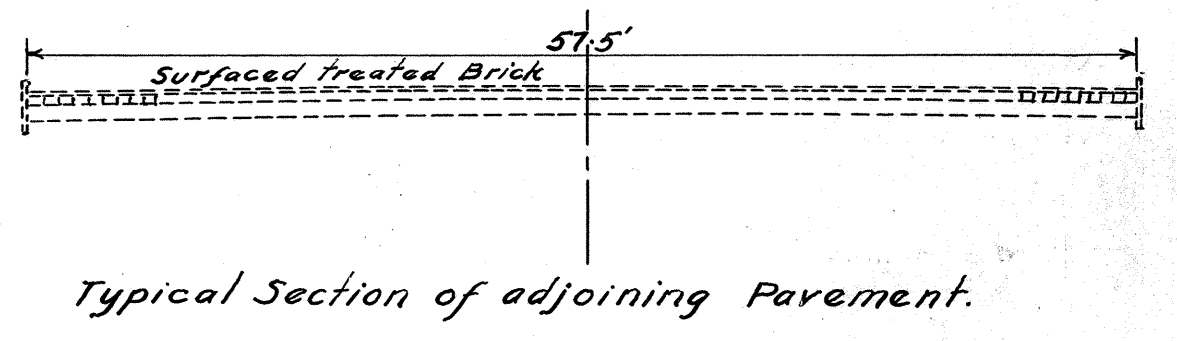
End Typical Sec. "D"
 Sta. 59+41

Begin Typical Sec. "E"
 Sta. 60+00

End Typical Sec. "E"
 Begin Typical Sec. "F"
 Sta. 66+41.5

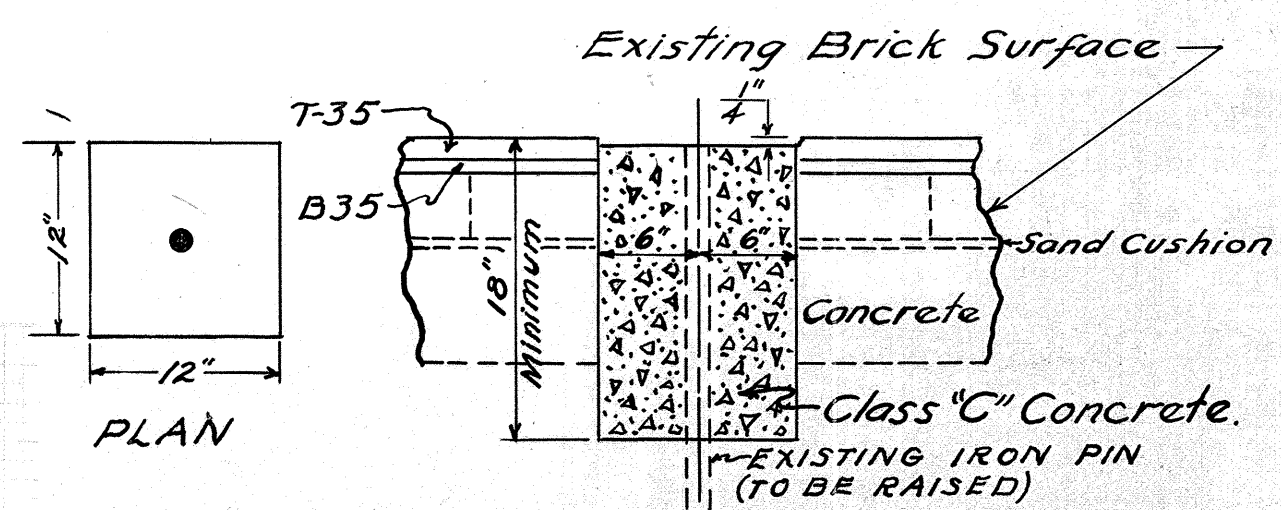
End Typical Sec. "F"
 Sta. 70+52

End Project
 Sta. 70+52



B.M. #14 Top W. Bolt
 Fire Hydrant, 26' Lt. Sta. 63+00
 Elev. 683.38

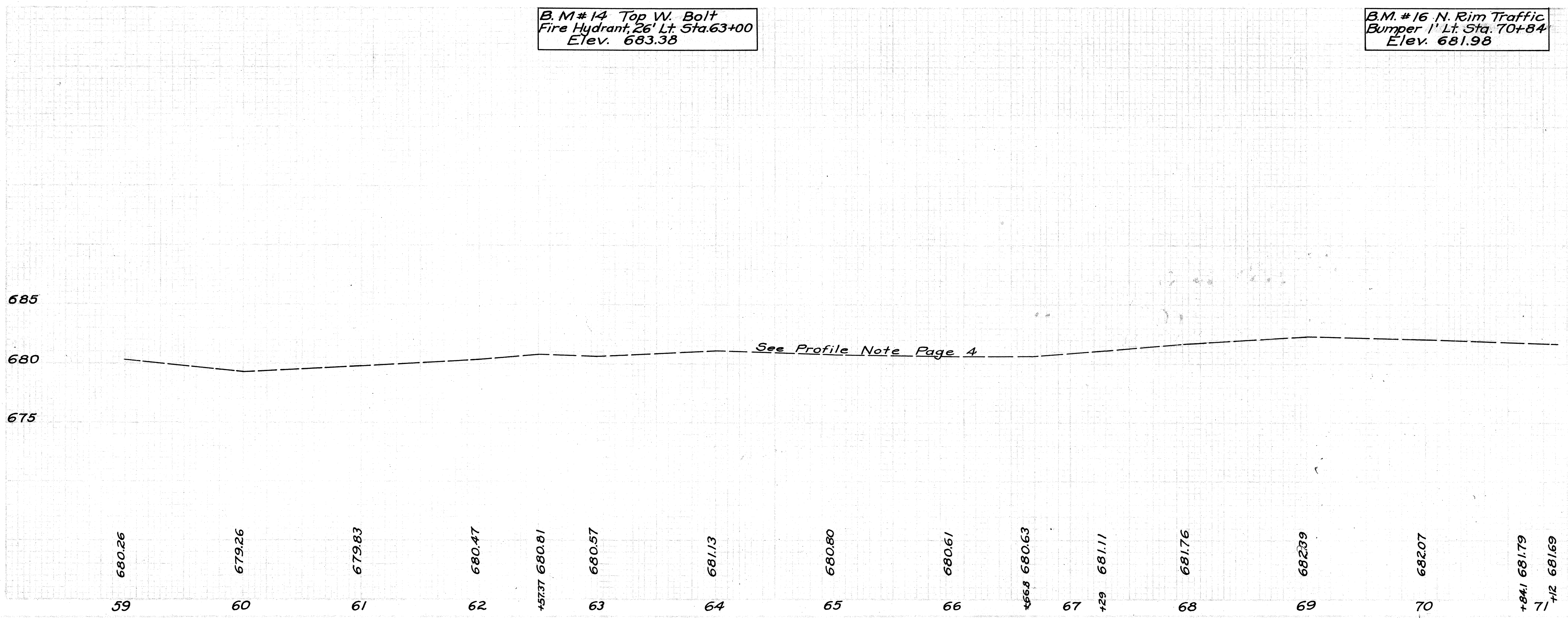
B.M. #16 N. Rim Traffic
 Bumper 1' Lt. Sta. 70+84
 Elev. 681.98



CROSS SECTION
 DETAIL SHOWING IRON PIN MONUMENT
 ADJUSTED TO GRADE.

Note: - Cost of necessary Pavement Removal, Raising Iron Pin and Class "C" Concrete is included in the Unit Price for adjusting Monuments to Grade, Item I-8

RESETTING IRON PIN
 Sta. 62+57.37 Side
 Cen. To General Summary, 1



HENRY-02 35-V13 54V