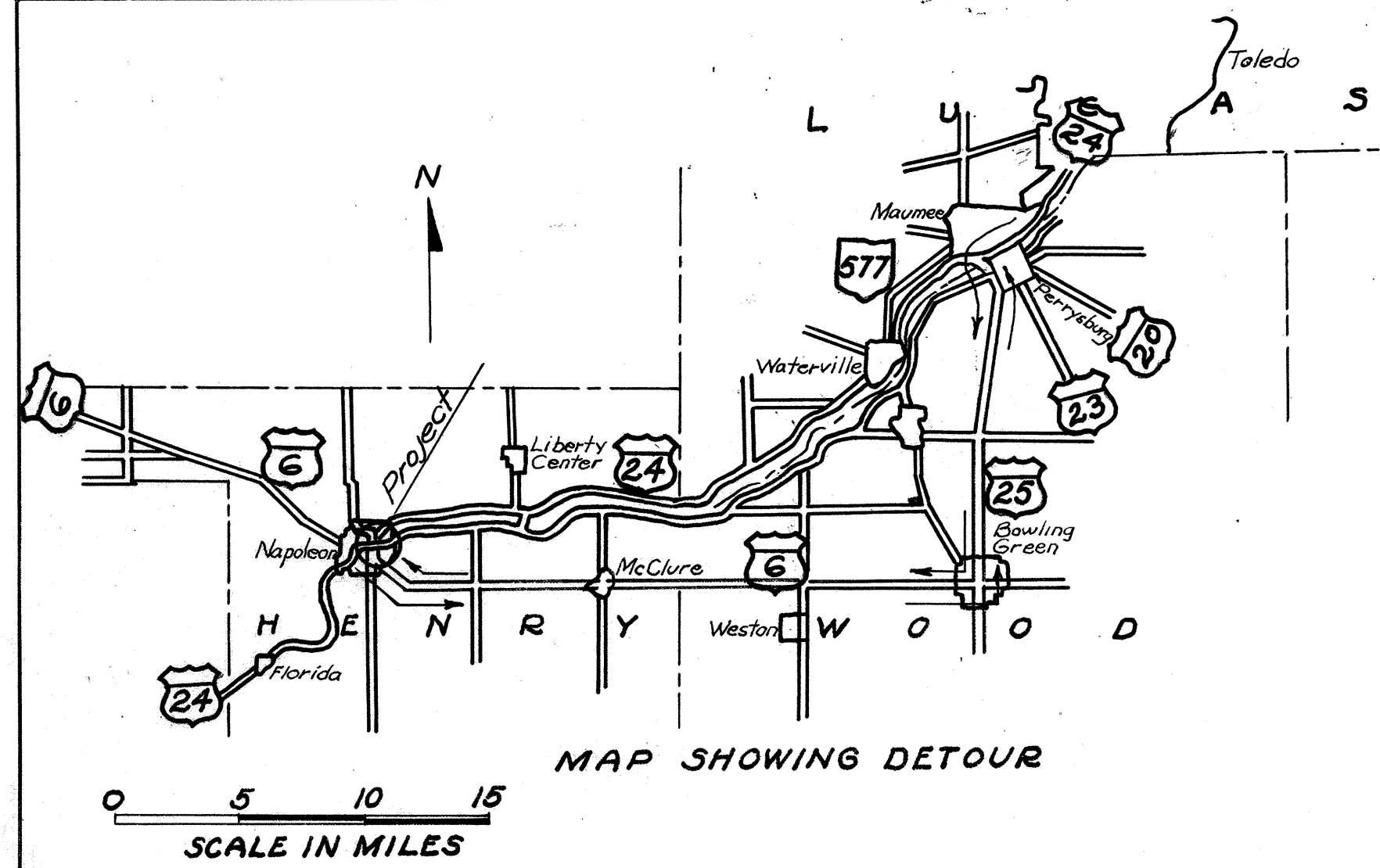


2007



STATE OF OHIO
DEPARTMENT OF HIGHWAYS
HEN-24-(10.01-10.26)
HENRY COUNTY
VILLAGE OF NAPOLEON

FED. RD. DIVISION	STATE	PROJECT	TYPE FUNDS
2	OHIO		1951

HENRY COUNTY
HEN 24-(10.01-10.26)

CONVENTIONAL	SIGNS
COUNTY LINE	_____
TOWNSHIP LINE	_____
SECTION LINE	_____
CORPORATION LINE	_____
FENCE LINE	_____
CENTER LINE	_____
POLE LINE	_____
RAILROAD	_____
GUARD RAIL	_____

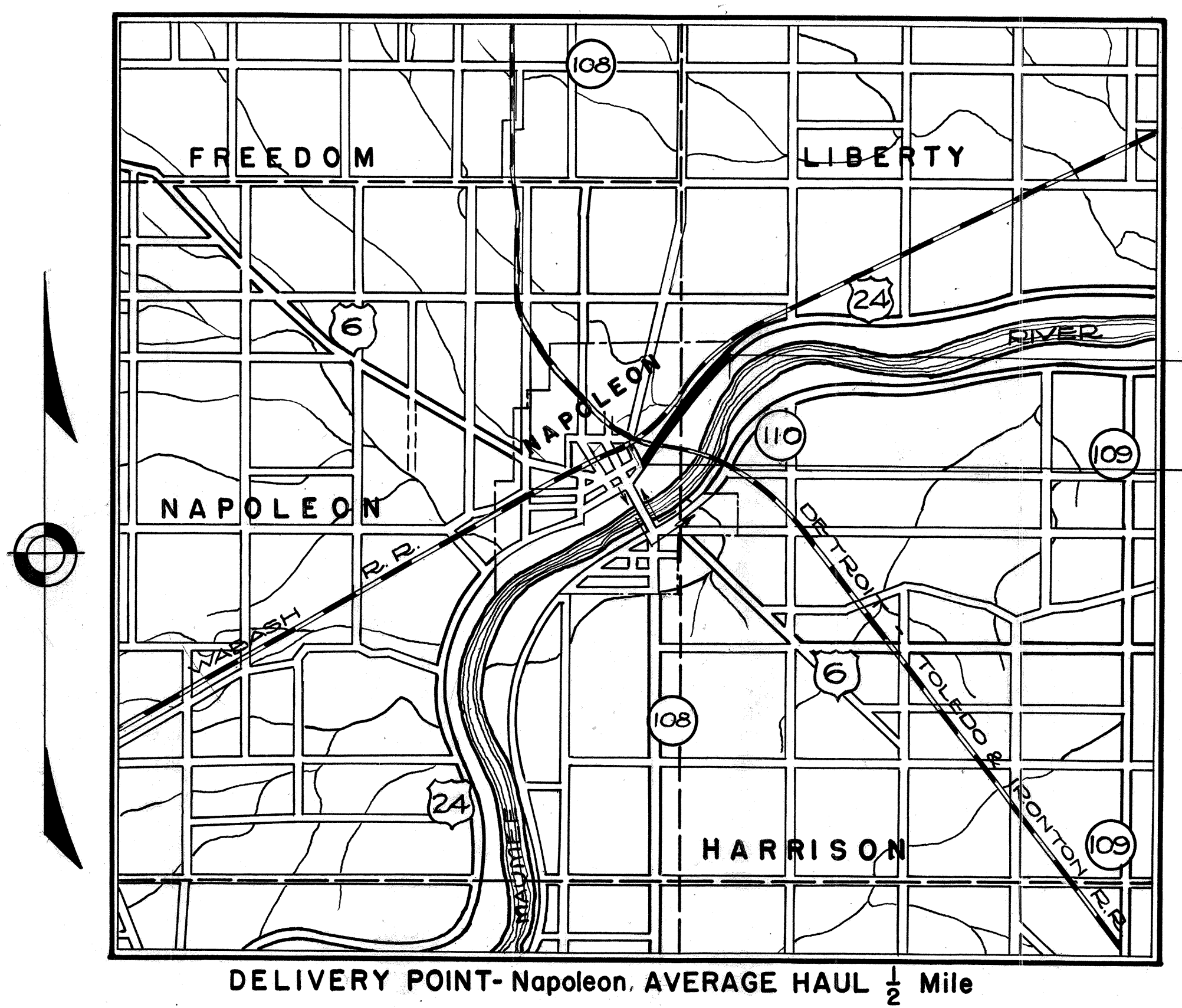
INDEX OF SHEETS

TITLE SHEET	1
TYPICAL SECTIONS	2
PAVEMENT COMPUTATIONS	3
GENERAL NOTES	3
GENERAL SUMMARY	3
SUB-SUMMARIES	4-5
DETAILS	5
PLAN & PROFILE	6-11
CROSS SECTIONS	12-14

The Standard Specifications of the State of Ohio, Department of Highways, including changes and Supplemental Specifications listed in the proposal shall govern this project.

The Right of way necessary for this improvement will be provided by the State of Ohio.

I hereby approve these plans and declare that the making of this improvement will require the closing to traffic of the highway and that detours will be provided as indicated on the plans.



End Project and Work Sta. 61+41.50

Begin Project and Work Sta. 0+210 Ft.

LINE DATA

BEGIN PROJECT AND WORK	STA. 0-210 Ft.
END PROJECT AND WORK	STA. 61+41.50
GROSS LENGTH = NET LENGTH =	6351.50 Lin. Ft.
	or 1.202 Miles

Scale 1" = 1 Mi.

PORTION TO BE IMPROVED STATE HIGHWAYS
OTHER ROADS
DETOURS (See Detour Map)

SCALES

PLAN 1" = 20' & 100'
PROFILE HORIZONTAL 1" = 20' & 100'
PROFILE VERTICAL 1" = 5' & 10'
CROSS SECTIONS 1" = 5'

Approved George W. Rubin
Date: June 12, 1951 Division Deputy Director

Approved _____
Date: _____ Chief Engineer, Bureau of Maintenance

Approved Richard P. ...
Date: 6-29-51 Chief Engineer, Bureau of Bridges & R.R. Crossings

Approved _____
Date: 8-17-51 Chief Engineer, Bureau of Location & Design

Approved _____
Date: 8-17-51 First Asst. Director & Chief Engineer

Approved _____
Date: 8-17-51 Director of Highways

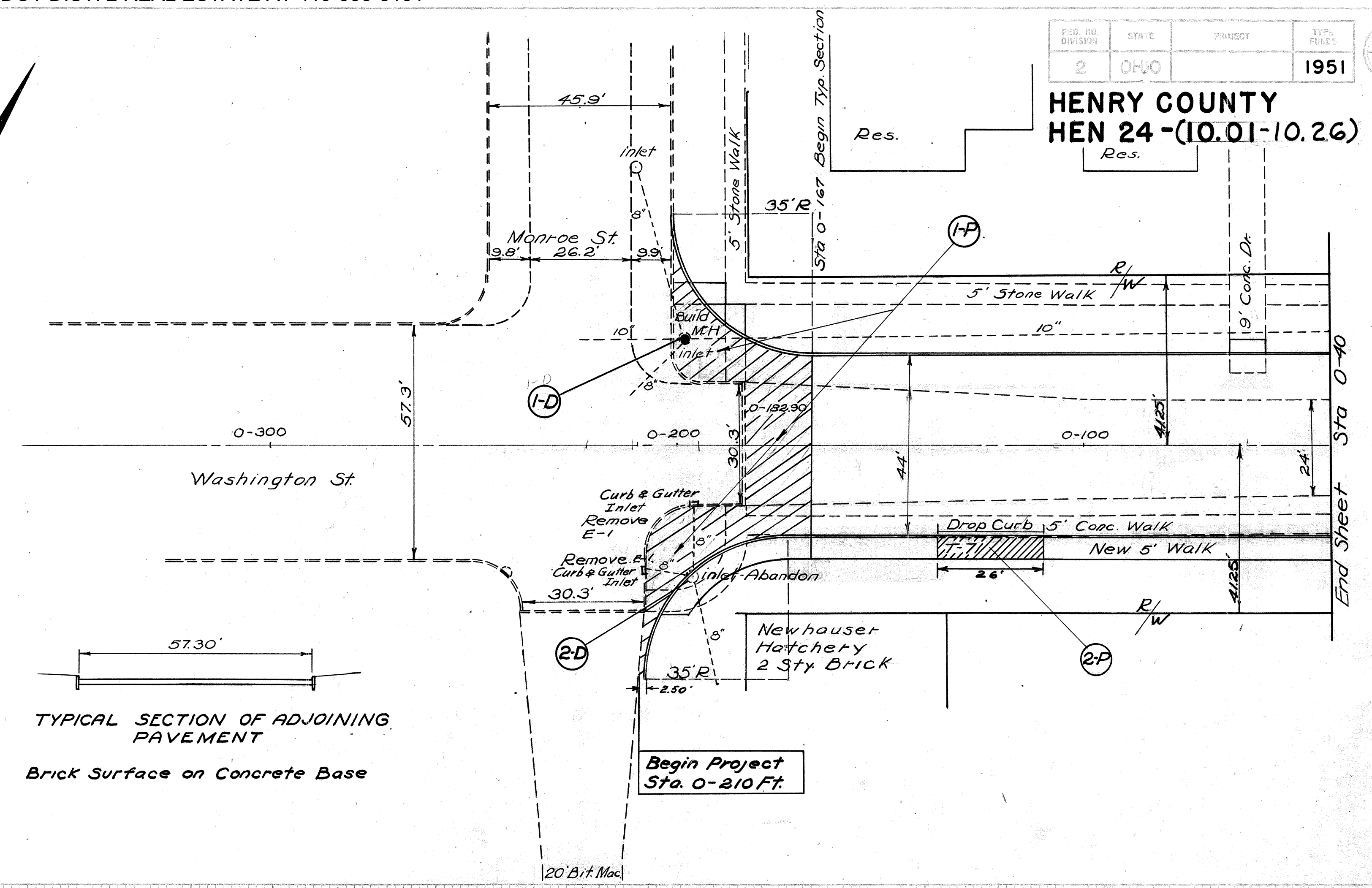
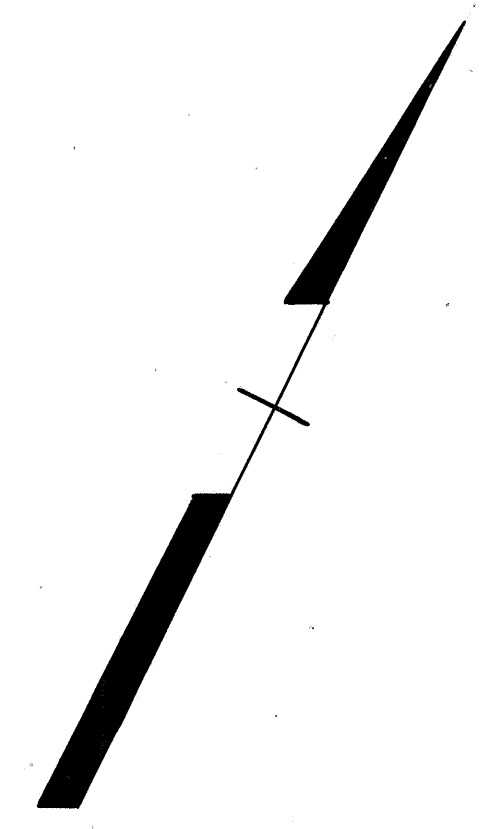
Print F. H. Sauer
Approved _____
Date: 7-5-51 Mayor, Village of Napoleon

SUPPLEMENTAL SPECIFICATIONS		STANDARD DRAWINGS	
5	5-28-48	G-307	5-1-51
T-171.19	Rev. 7-31-50	I-12, 3, 4 & 5	2-20-45
M-110.25	Rev. 7-25-51	R-1	5-16-51
		L-3	4-1-50
		L-3-A	4-1-50
		B-T-71E	1-2-51
		L-J. N#1	8-1-51
		T.J. N#1	8-1-51
		T.J. N#2	8-1-51
		T-J. N#3	8-1-51
		L-1	4-1-50
		I-B.C.B. 1-2-A & B	1-2-51
		I-B.C.B. N#3	5-15-51
		I-B.C.B. N#3A	5-15-51
		I-B.M.H. N#1	5-1-51
		T-1E	3-15-48
		I-15N#1	3-1-47
		I-15N#2	6-17-49
		B7.50-70-71E N#1	10-1-47

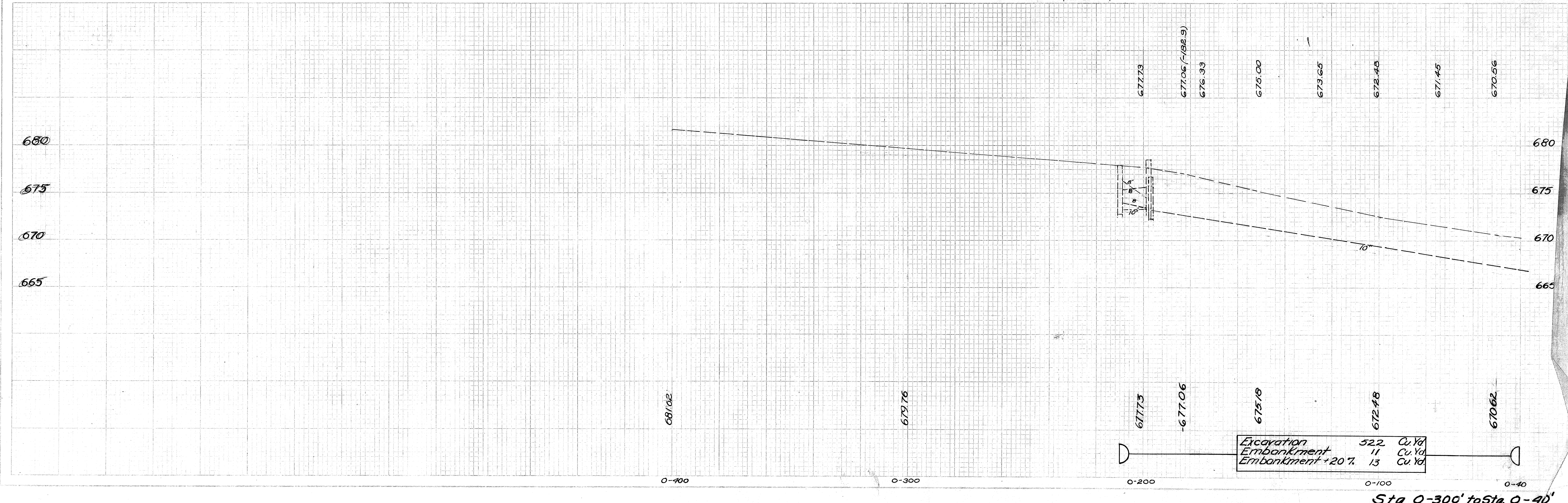
FILE NO.	SEC. HENRY COUNTY HEN-24-(10.01-10.26)
DATE OF LETTING	
CONTRACT NO.	

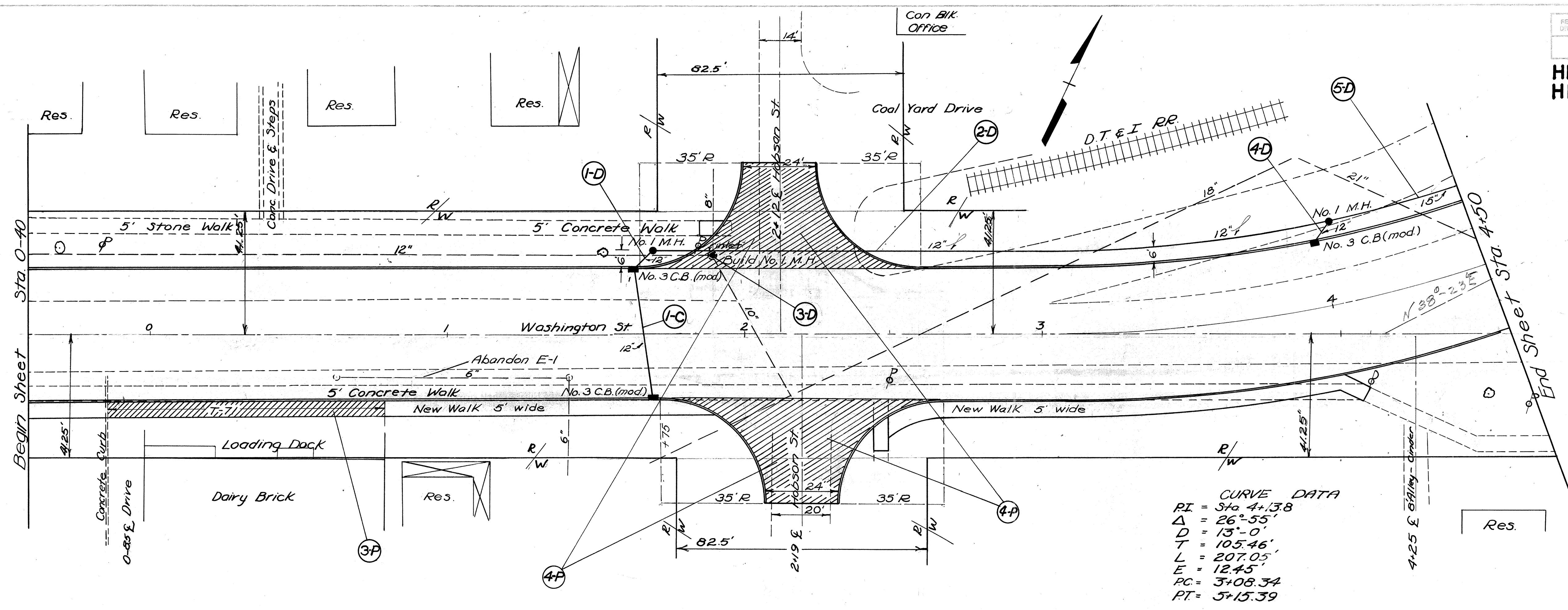
CONSTRUCTION BUREAU
JUN 23 1951
GROUND PHOTOLAB

HENRY COUNTY
HEN 24-(10.01-10.26)



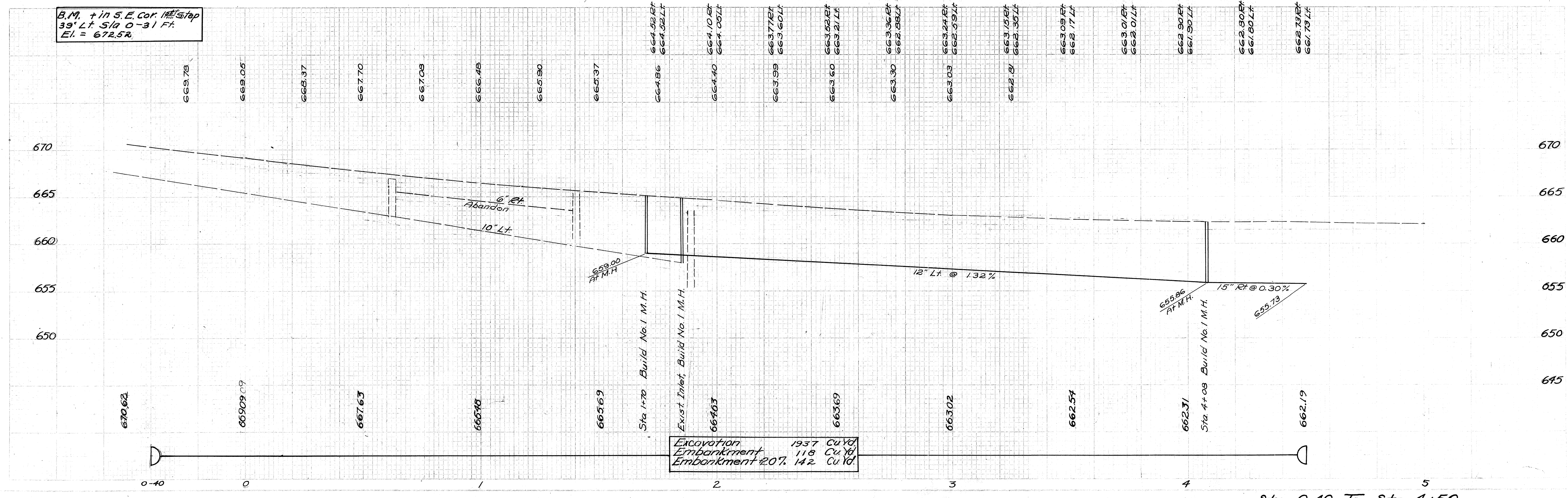
TYPICAL SECTION OF ADJOINING PAVEMENT
Brick Surface on Concrete Base





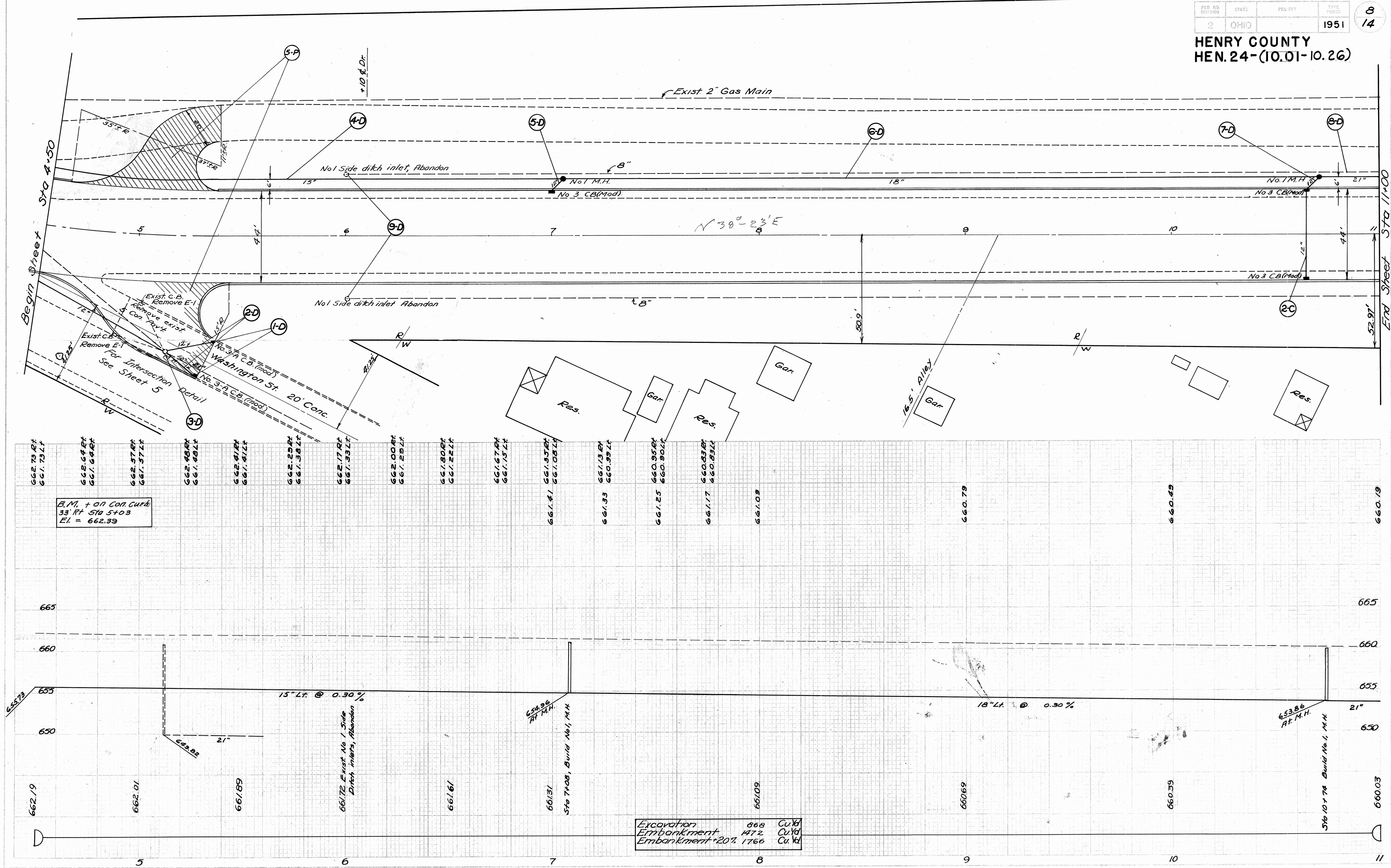
CURVE DATA
 PI = Sta 4+13.8
 $\Delta = 26^{\circ}55'$
 D = 13'-0"
 T = 105.46'
 L = 207.05'
 E = 12.45'
 PC = 3+08.34
 PT = 5+15.39

B.M. + in S.E. Cor. 1st Step
 39' Lt. Sta 0-31 Ft.
 El. = 672.52



FOR ANY QUESTIONS PLEASE CONTACT ODOT DIST. 2 REAL ESTATE AT 419-353-8131

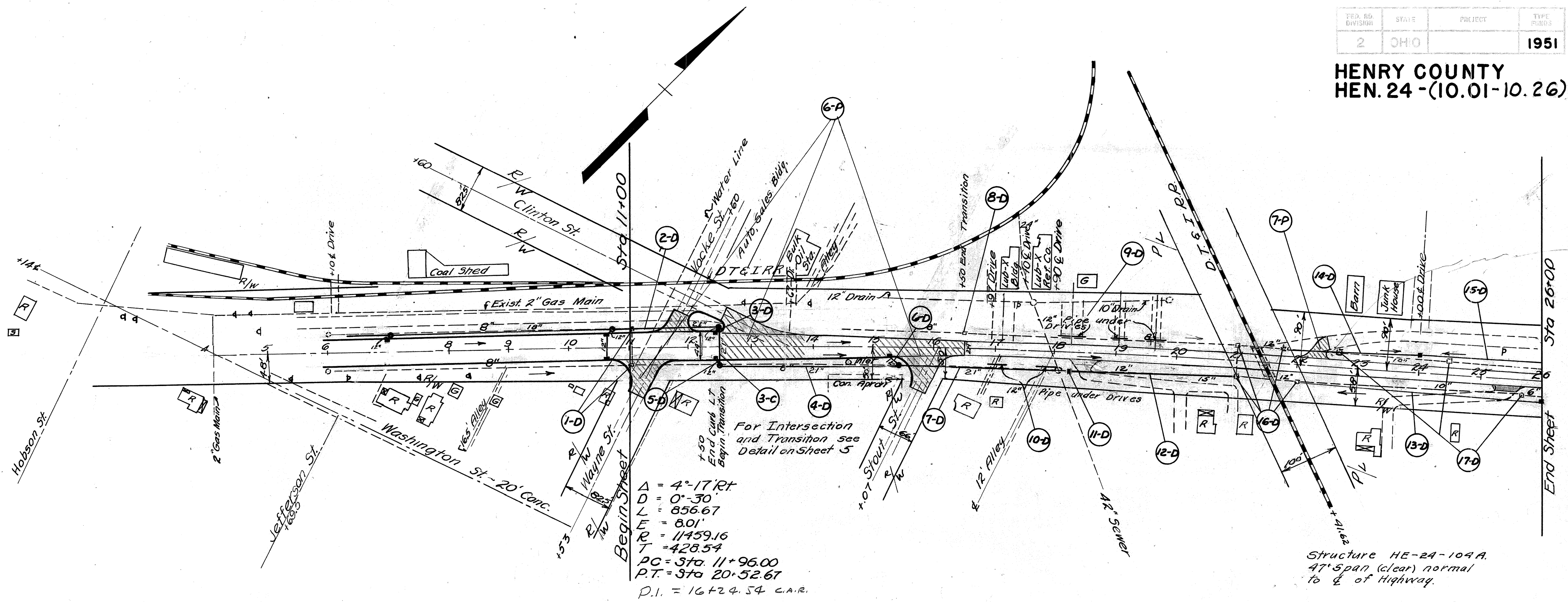
HENRY COUNTY
HEN. 24-(10.01-10.26)



662.73 RT	661.73 LT	662.64 RT	661.64 RT	662.57 RT	661.57 LT	662.48 RT	661.48 LT	662.41 RT	661.41 LT	662.29 RT	661.38 LT	662.17 RT	661.33 LT	662.00 RT	661.29 LT	661.80 RT	661.22 LT	661.67 RT	661.55 LT	661.51	661.33 RT	660.99 LT	661.25	660.95 RT	660.90 LT	661.17	660.83 RT	660.83 LT	661.09	660.79	660.49	660.19	
B.M. + on Con. Curb 33' RT Sta 5+03 E.I. = 662.39																																	

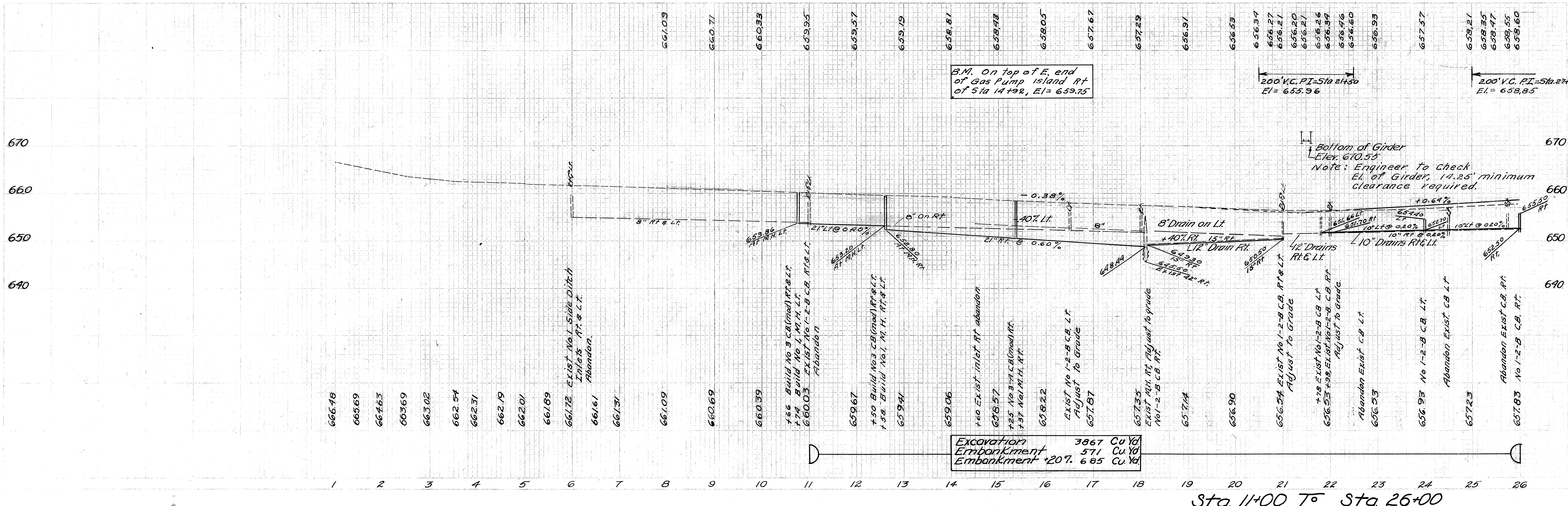
Excavation	868	Cu. Yd.
Embankment	472	Cu. Yd.
Embankment + 20%	1766	Cu. Yd.

HENRY COUNTY
HEN. 24 - (10.01-10.26)



$\Delta = 4^{\circ}17'RT$
 $D = 0^{\circ}30'$
 $L = 856.67$
 $R = 801'$
 $T = 11459.16$
 $Y = 428.54$
 $PC = Sta 11+95.00$
 $PT = Sta 20+52.67$
 $P.I. = 16+24.54 CAR.$

Structure HE-24-104A
47' span (clear) normal to $\frac{1}{2}$ of Highway.



B.M. On top of E. end of Gas Pump island RT of Sta 14+92, El = 659.75

200' V.C. PI = Sta 21+50
El = 655.96

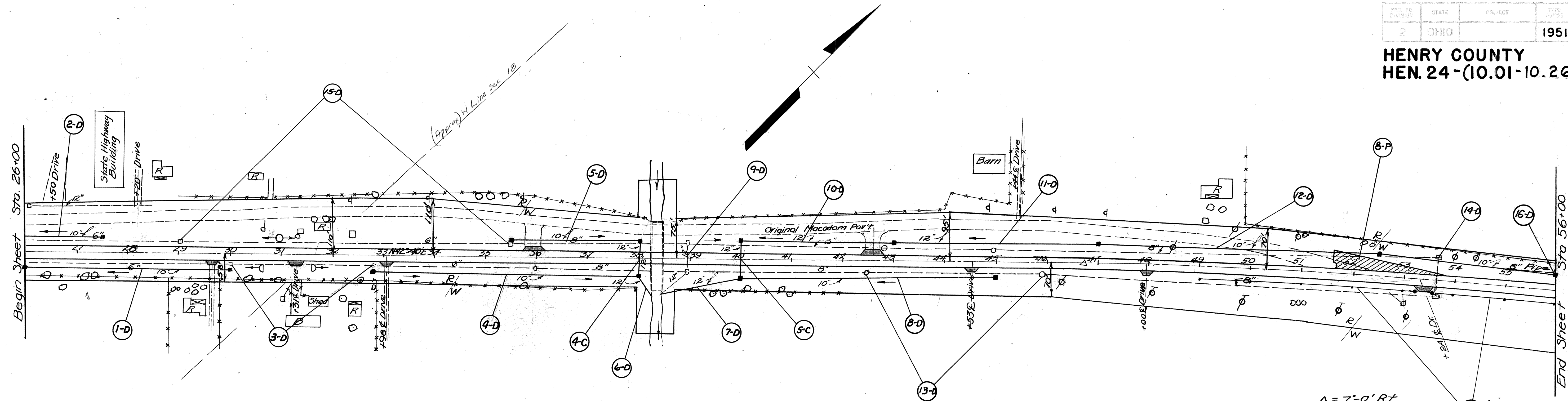
200' V.C. PI = Sta 24+00
El = 658.85

Bottom of Girder
Elev. 670.55
Note: Engineer to Check El. of Girder, 14.25' minimum clearance required.

Excavation 3867 Cu. Yd.
Embankment 571 Cu. Yd.
Embankment +20% 685 Cu. Yd.

Sta 11+00 To Sta 26+00

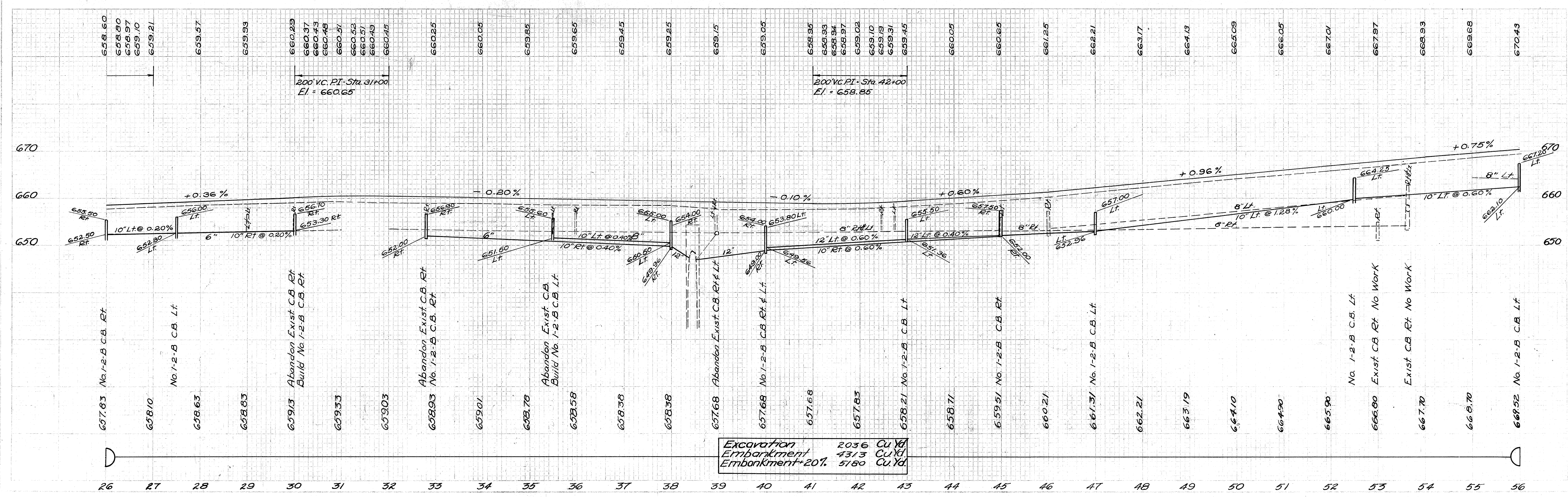
HENRY COUNTY
HEN. 24-(10.01-10.26)



HE- 24-107
Stone Arch
19'-6" Span 10' Rise
Length = 120'
Depth of Fill over Crown = 5' ±
Condition - Fair

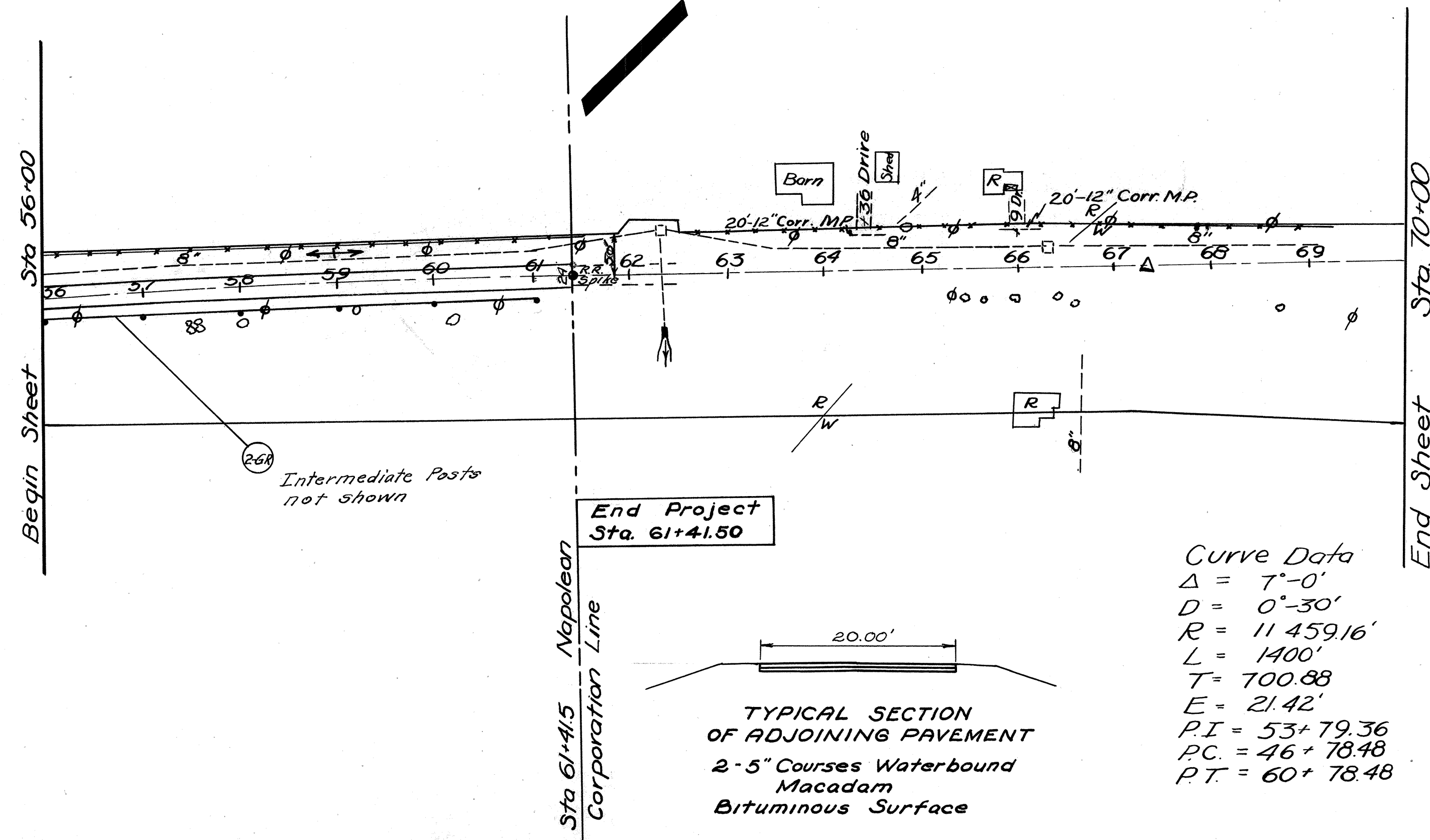
Δ = 7'-0" RT
D = 0° 50'
T = 700.88
L = 1400'
E = 21.42'
P.I. = Sta. 53+79.36
P.C. = Sta. 46+78.48
P.T. = Sta. 60+78.48

FOR ANY QUESTIONS PLEASE CONTACT ODOT DIST. 2 REAL ESTATE AT 419-353-8131

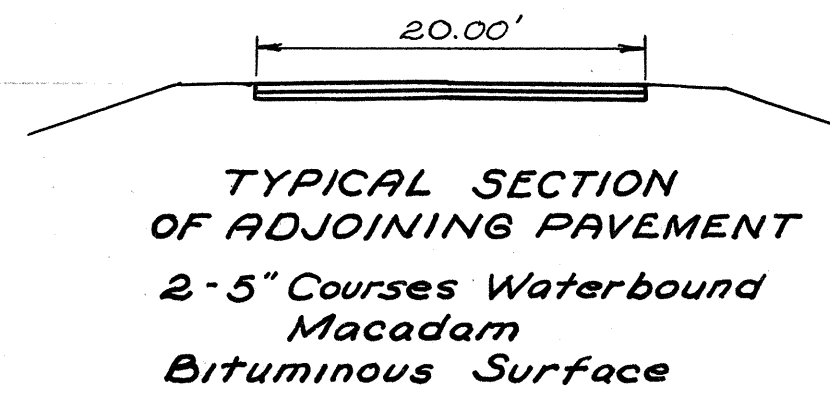


Sta 26+00 To Sta 56+00

HENRY COUNTY
HEN. 24-(10.01-10.26)



Curve Data
 $\Delta = 7^{\circ}-0'$
 $D = 0^{\circ}-30'$
 $R = 11459.16'$
 $L = 1400'$
 $T = 700.88'$
 $E = 21.42'$
 $PI = 53+79.36$
 $PC = 46+78.48$
 $PT = 60+78.48$



End Project
Sta. 61+41.50

Sta 61+41.5 Napoleon Corporation Line

Intermediate Posts not shown

B.M. on R.R. Spike on \perp
at Corp Line Sta. 61+41.50
E1 = 674.48

