

**HENRY COUNTY**  
**S.H. 51 SEC. Q (PT.)**  
**R/W PLANS**

DATE: NOV. 7, 1940. DRAWN BY R.H.P.  
 REVISED 3/14/41  
 LENGTH OF PROJECT = 17,009.82' = 3.222 MI.

1/4

R/W OK. as shown  
F.J.F.  
3/13/44

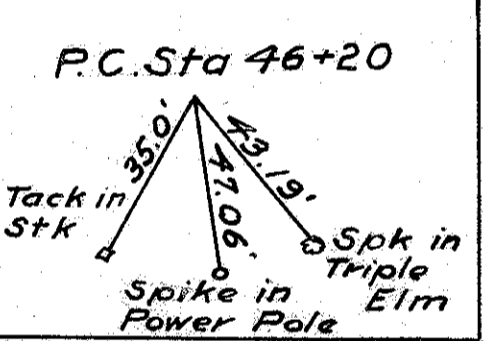
Scanned June 1997

SEC. 7

LIBERTY TWP.

T. 5 N. R. 7 E.

T. J. ROHRS



BEGINNING OF PROJECT  
S.H. 51 SEC. Q (PT.)  
Station 45+00

**CURVE DATA & CONSTRUCTION**  
 Δ = 7°00' RT  
 D = 0°30'  
 R = 11459.16'  
 L = 1400.0'  
 T = 700.88'  
 E = 21.42'  
 PI = 53+77.36'

**CURVE DATA & SURVEY**  
 Δ = 20°-0' RT  
 D = 0°-30'  
 R = 11459.16'  
 T = 2020.6'  
 L = 400.00' LENA REISER  
 E = 176.75'  
 PI = Sta 66+40.6'

R-247 S B-29

SEC. 7

LIBERTY TWP.

T. 5 N. R. 7 E.

PETER WALTERS  
VILLAGE OF NAPOLEON  
+195-8" Elm 41' Rt.  
+195-3-3" Elms 41' Rt.  
P.C. Sta. 46+20 & SURVEY  
+17-2" Pine 42' Lt.  
+15-10" Twin Cottonwood 47' Lt.  
+02-10" Cottonwood 48' Lt.  
+02-18" Pine Cottonwood 43' Lt.  
+36-12" 1/8" Twin Cottonwood 41' Lt.  
+64-18" Twin Cottonwood 38' Lt.

GEORGE SWIN ET AL.  
VILLAGE OF NAPOLEON  
+54-12" Sycamore 41' Rt.  
+89-10" Elm 42' Rt.  
+72-8" Twin Elm 42' Rt.  
+24-10" 1/4" Twin Ash 42' Rt.  
+88-16" Elm 55' Rt.  
+05-12" Twin Ash 56' Rt.  
+13-10" Elm 57' Rt.  
+07-8" 1/2" Twin Ash 63' Rt.  
+08-16" Elm 63' Rt.  
+91-8" Ash 64' Rt.  
+93-8" Elm 63' Rt.  
+95-8" Elm 64' Rt.  
+128-8" Locust 67' Rt.

SARAH C. HUSTON  
CORP. LINE  
+16-8" Ash 15' Rt.  
+54-10" Ash 16' Rt.  
+62-18" Elm 14' Rt.  
+80-10" Locust 21' Rt.  
+67-10" Locust 20' Rt.  
+17-10" Ash 34' Rt.  
+20-10" Apple 30' Rt.  
+17-10" Ash 34' Rt.

ROSE H. ATKINS  
CORP. LINE  
+14-8" Elm 15' Rt.  
+53-5" 1/2" Twin Thorn-apple 14' Rt.  
+92-6" 1/2" Twin Apple 25' Rt.  
+40-14" Elm 10' Rt.  
+87-14" Elm 11' Rt.  
+92-14" Twin Locust 5' Rt.  
+94-12" Twin Locust 6' Rt.  
+38-8" Elm 4' Rt.  
+59-12" Elm 15' Rt.  
P.C. Sta 67+31.33 & CONS.  
= Sta 67+29.47  
31.18' Lt.  
+62-8" 1/2" Locusts 10' Rt.

B-2A



HENRY COUNTY  
S.H. 51  
SEC. Q (PT.)  
R/W PLANS

2  
4

DATE: NOV. 7, 1940. DRAWN BY R.H.P.  
REVISED 3/1/41  
LENGTH OF PROJECT = 17,009.82' = 3.222 MI.

SEC. 7 LIBERTY TWP. T. 5 N. R. 7 E.

ROSE H. ATKINS

ROSE H. ATKINS

SEC. 7 LIBERTY TWP.

LIBERTY TWP.

T. 5 N. R. 7 E.

T. J. ROHRS

WM. H. SNYDER

T. J. ROHRS

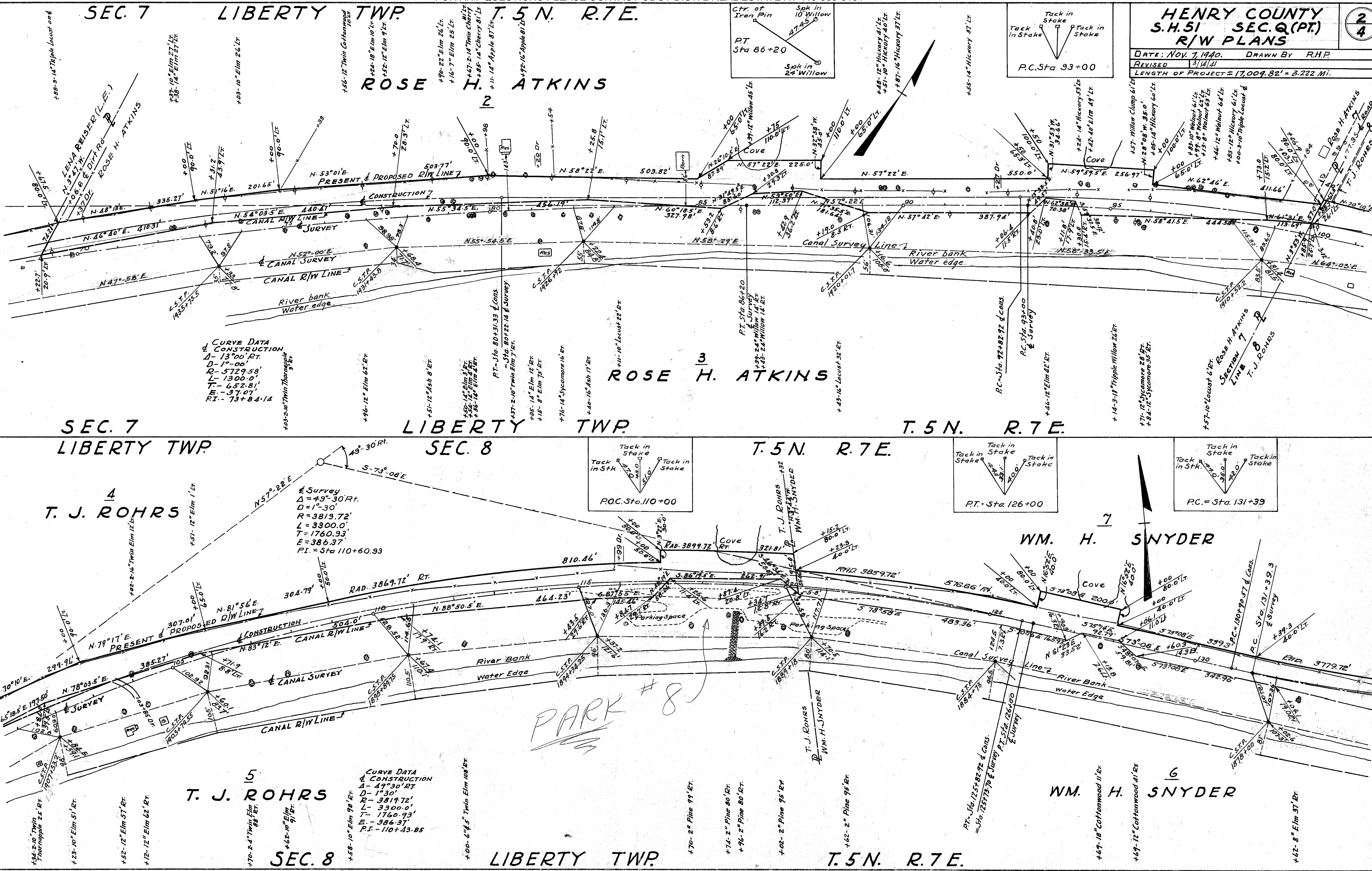
WM. H. SNYDER

SEC. 8 LIBERTY TWP.

LIBERTY TWP.

T. 5 N. R. 7 E.

PARK #8



Surveyed June 1947



FOR ANY QUESTIONS PLEASE CONTACT ODOT DIST. 2 REAL ESTATE AT 419-353-8131

SEC. 8

LIBERTY TWP.

T. 5 N. R. 7 E.

SEC. 9

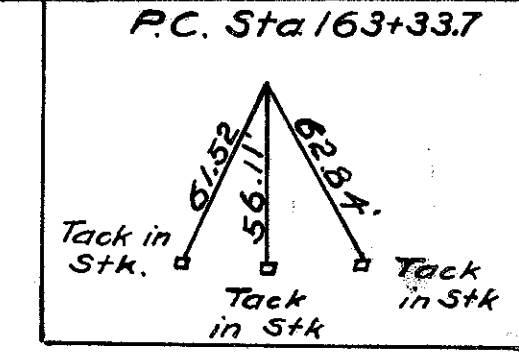
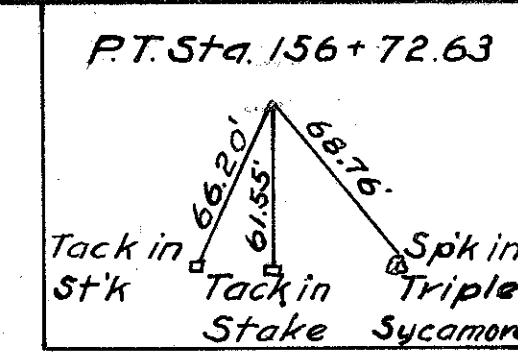
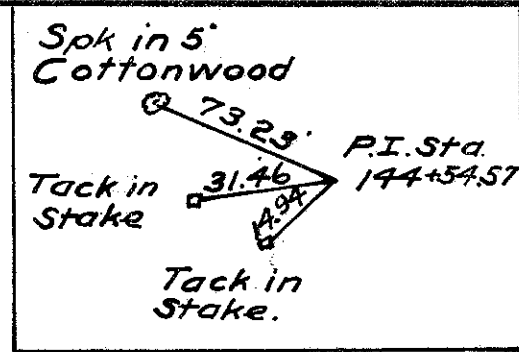
HENRY COUNTY S.H. 51 SEC. 9 (PT.) R/W PLANS

3/4

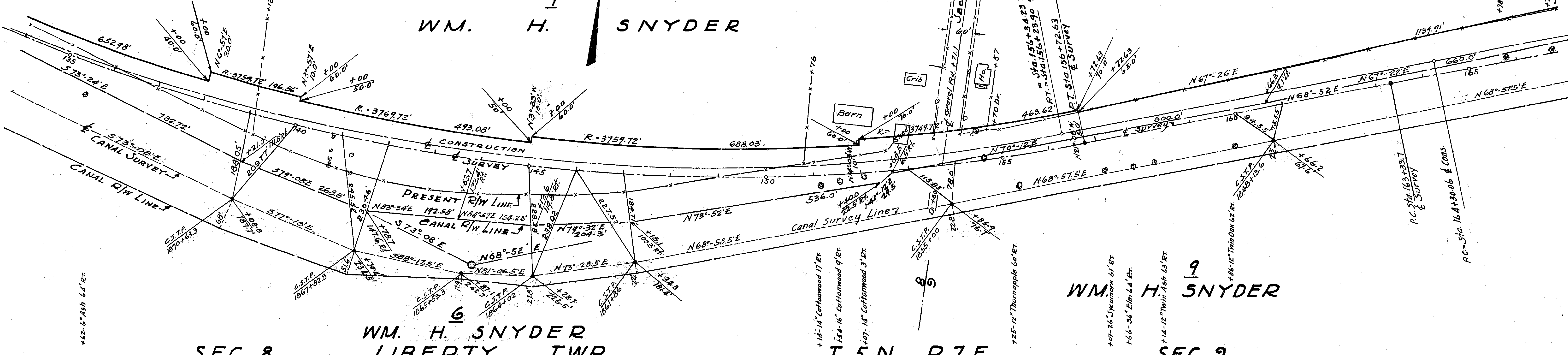
DATE: NOV. 7, 1940. DRAWN BY RHP  
REVISED 3/14  
LENGTH OF PROJECT = 17,009.82' = 3.222 Mi.

CURVE DATA & CONSTRUCTION  
Δ = 38° 00' Lt.  
D = 1° 30'  
R = 3819.72'  
T = 1315.27'  
L = 2533.33'  
E = 220.13'  
P.I. = Sta. 144+05.84

Curve Data on Survey  
Δ = 38° 00' Lt.  
D = 1° 30'  
R = 3819.72'  
T = 1315.27'  
L = 2533.33'  
E = 220.13'  
P.I. = Sta. 144+54.57



WM. H. SNYDER



SEC. 8

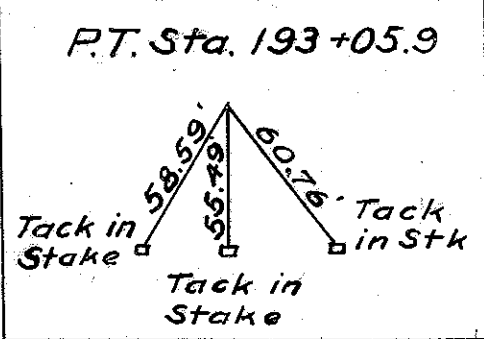
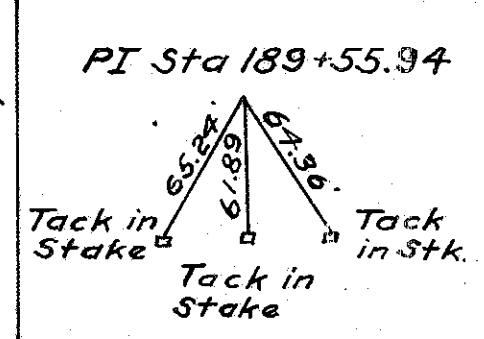
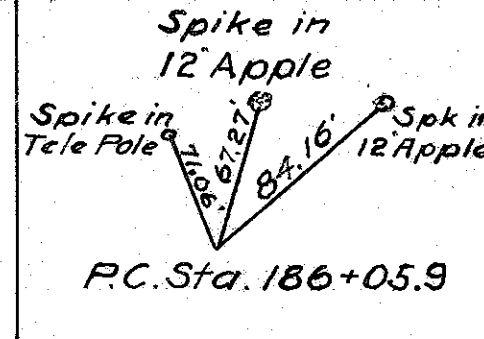
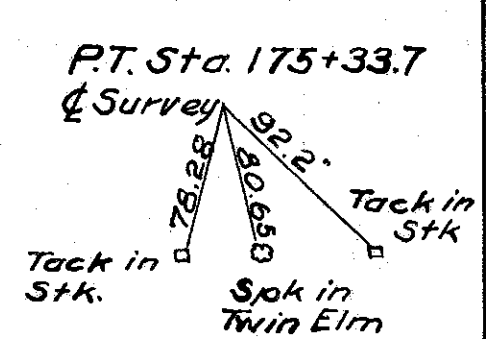
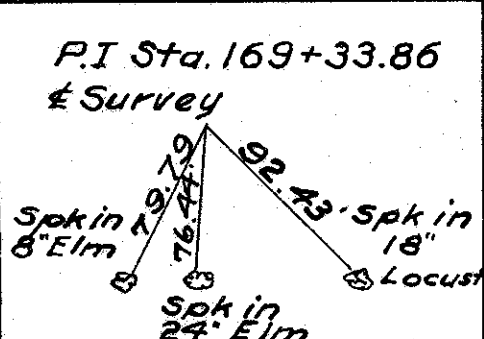
LIBERTY TWP.

T. 5 N. R. 7 E.

SEC. 9

LIBERTY TWP.

T. 5 N. R. 7 E.



ALBERT & MARY RICKENBERG

SEC. 9

LIBERTY TWP.

T. 5 N. R. 7 E.

FRED ZAHREND

Curve on Survey  
Δ = 1° 10' Lt  
D = 0° 10'  
R = 34377.48  
T = 350.04'  
L = 700.00'  
E = 1.72'  
P.I. = Sta. 189+55.94

Curve on Canal R/W Line  
Δ = 3° 00' Rt  
D = 0° 15'  
R = 22918.32'  
T = 600.16'  
L = 1200'  
E = 7.84'  
P.I. = Sta. 169+33.86

CURVE DATA & CONSTRUCTION  
Δ = 3° 00' Rt  
D = 0° 15'  
R = 22918.32'  
T = 600.16'  
L = 1200.0'  
E = 7.84'  
P.I. = Sta. 170+30.22

CURVE DATA & CONSTRUCTION  
Δ = 1° 10' Lt  
D = 0° 10'  
R = 34377.48'  
T = 350.04'  
L = 700.00'  
E = 1.72'  
P.I. = Sta. 189+55.58

ALBERT & EMMA RICKENBERG

ADDIE L. ZAHREND

SEC. 9

LIBERTY TWP.

T. 5 N. R. 7 E.

Stained  
June 1997

FOR ANY QUESTIONS PLEASE CONTACT ODOT DIST. 2 REAL ESTATE AT 419-353-8131

SECTION 9

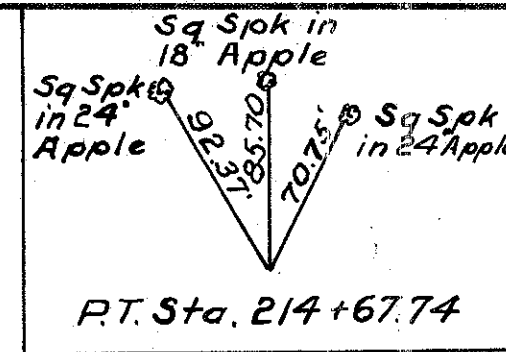
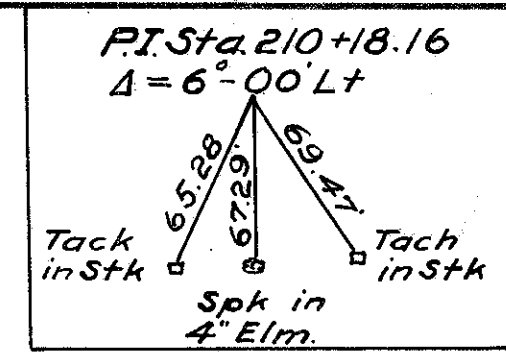
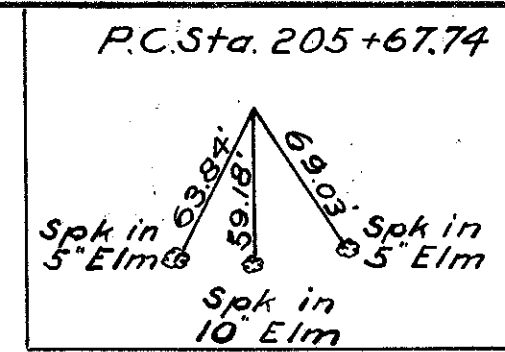
LIBERTY TWP. T.5N. R.7E.

SEC. 10

**HENRY COUNTY**  
**S.H. 51 SEC. Q (PT.)**  
**R/W PLANS**

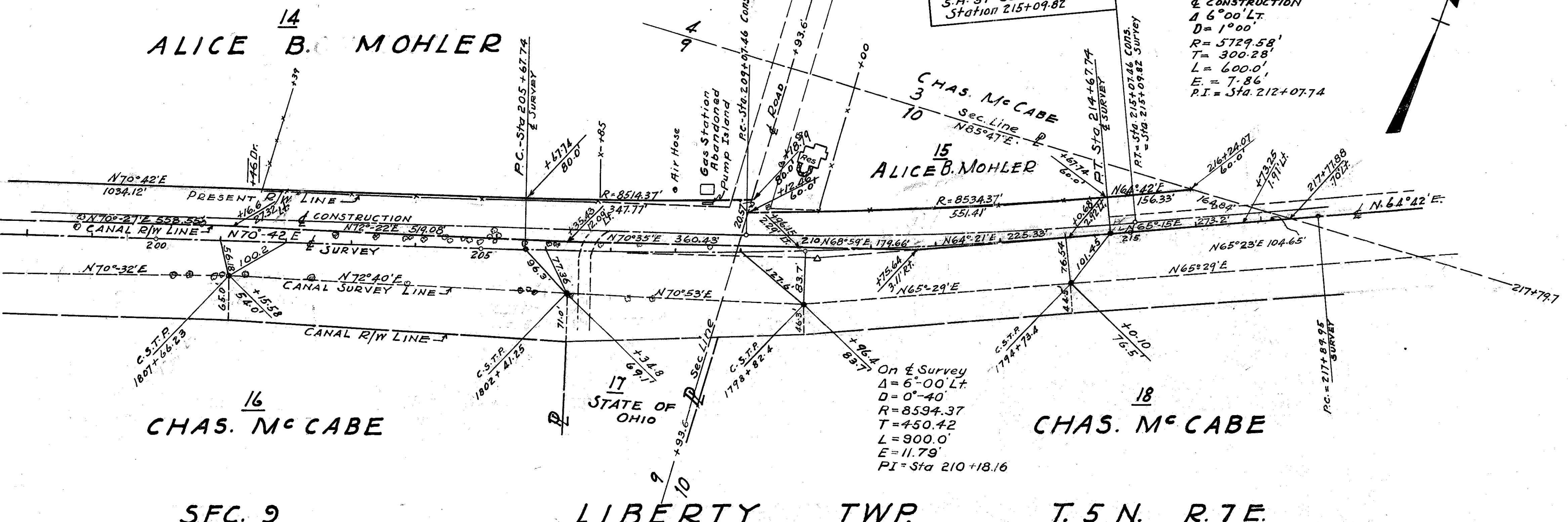
DATE: NOV. 7, 1940 DRAWN BY: R.H.P.  
 REVISED 3/1/41  
 LENGTH OF PROJECT = 17009.82' = 3.222 Mi.

4  
4



**CURVE DATA & CONSTRUCTION**  
 $\Delta = 6^{\circ}00' \text{ LT}$   
 $D = 1^{\circ}00'$   
 $R = 5729.58'$   
 $T = 300.28'$   
 $L = 600.0'$   
 $E = 7.86'$   
 $P.I. = \text{Sta. } 212+07.74$

**END OF PROJECT**  
 S.H. 51 SEC. Q (PT.)  
 Station 215+09.82



B-5A