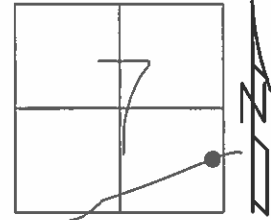


O.D.O.T. DISTRICT 2 SURVEY OFFICE (USE ONLY)

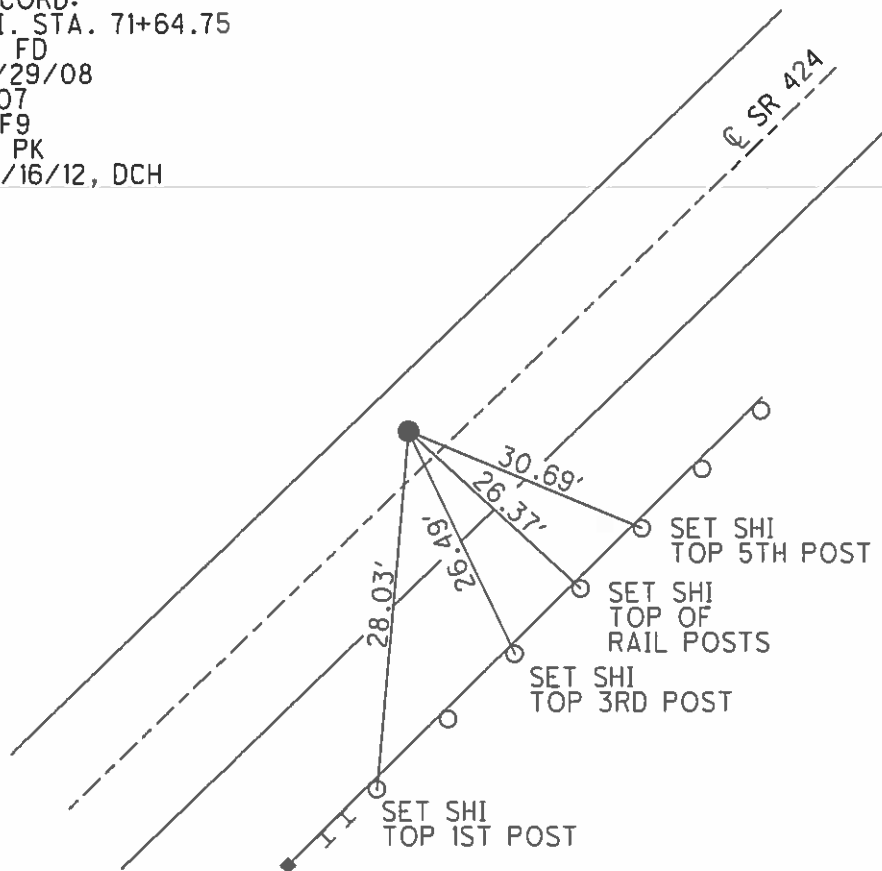
PERSONNEL _____ REFERENCE NO. 8 SHEET 8 OF 48
 NOTES HOMAN DATE 5-8-12 ROUTE SR 424
 H.C. ROUSOS WEATHER CLOUDY COUNTY HENRY
 R.C. HARBAUGH TEMP. 45° TOWNSHIP FLATROCK
 _____ SECTION 7
 _____ T 4 N R 6 E

TYPE MONUMENT _____ PK _____
 ON SURFACE - ~~BELOW~~ _____ ON _____
 LEFT - ~~C~~ PAV'T - ~~RIGHT~~ _____ 4.2 _____
7.8 TO LT EDGE PAVEMENT
 S.L.M. _____ 71+67

Grid: Northing: 606015.077 Easting: 1498659.444



RECORD:
 P.I. STA. 71+64.75
 OK FD
 12/29/08
 #107
 REF9
 FD PK
 02/16/12, DCH



O.D.O.T. DISTRICT 2 SURVEY OFFICE

PERSONNEL _____

REFERENCE NO. 8

SHEET 3 OF 43

NOTES HOFFMAN

H.C. LOUISIANA

R.C. PARISH

DATE 4-1-91

WEATHER CLOUDY

TEMP. 40°

ROUTE SR 424

COUNTY HENRY

TOWNSHIP FLATROCK

SECTION 7

Set P.K./WASHER
5-9-91
C.L.

T4 NR 6 E

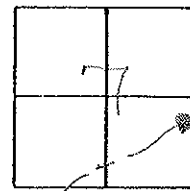
TYPE MONUMENT 2" CP/WASHER

ON SURFACE - BELOW YES

LEFT - & PAV'T. - RIGHT 4.0

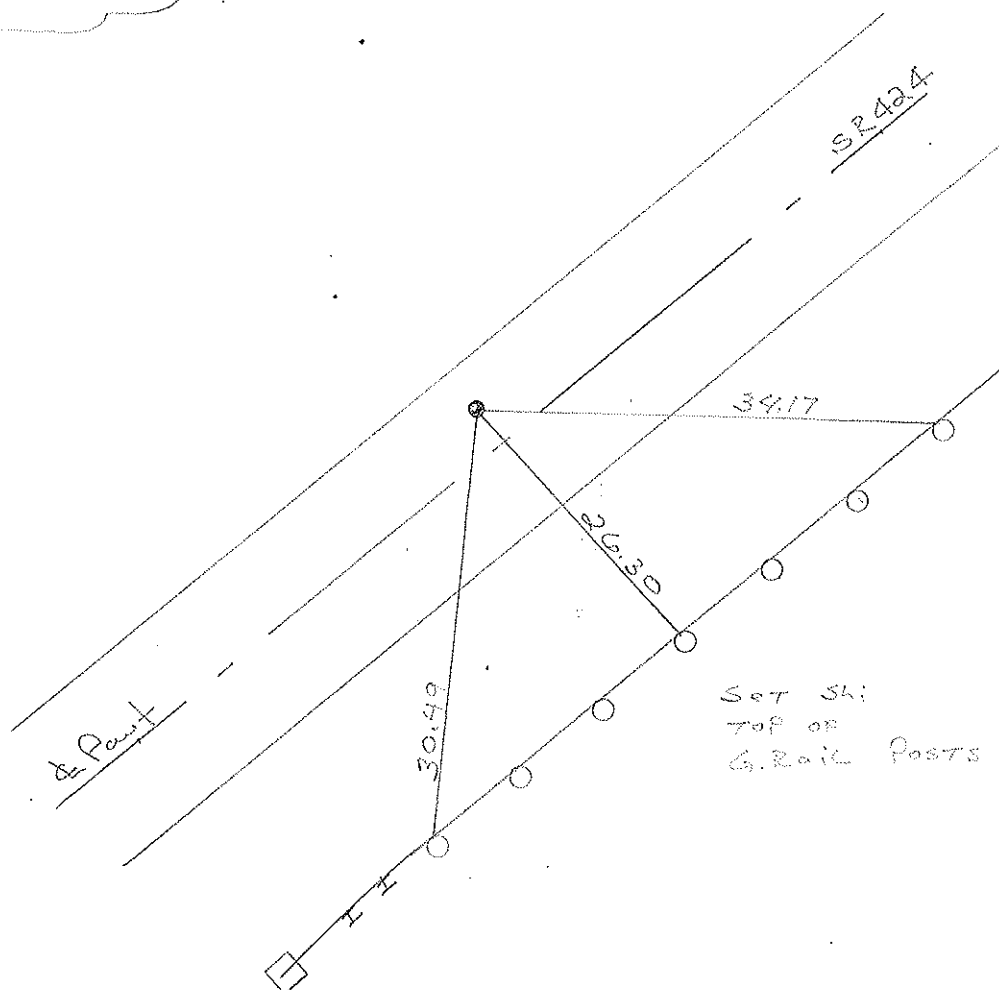
7.8 TO LT. EDGE PAVEMENT

S.L.M. 71+67



RECORD:

P.I. Sta. 71+64.75



County HENRY S.R. 424

Township FLATROCK

Section 7-8

T4N, R6E

Personnel Hoffman

Householder

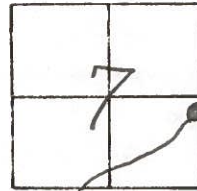
#8

Date 6-17-81

Weather clear

Temp. +70°

OIC
10-26-81
S.W.M.



Fd. R.R. SPK. @ SURFACE

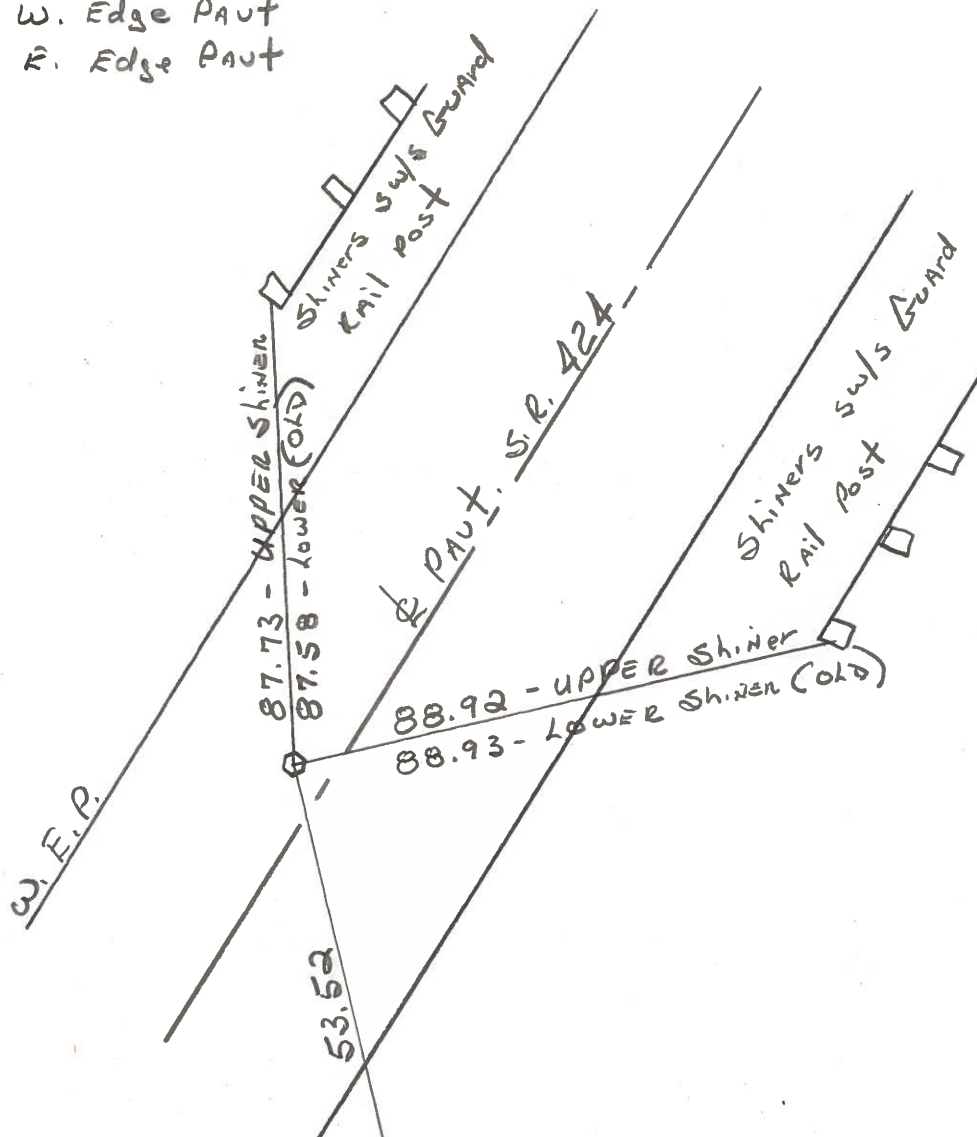
4.1' Lt. of & PAUT.

8.1' to W. Edge PAUT

15.5' to E. Edge PAUT

PROJECT STA ± 71+87

RE-SET 2" SPK/WASHER



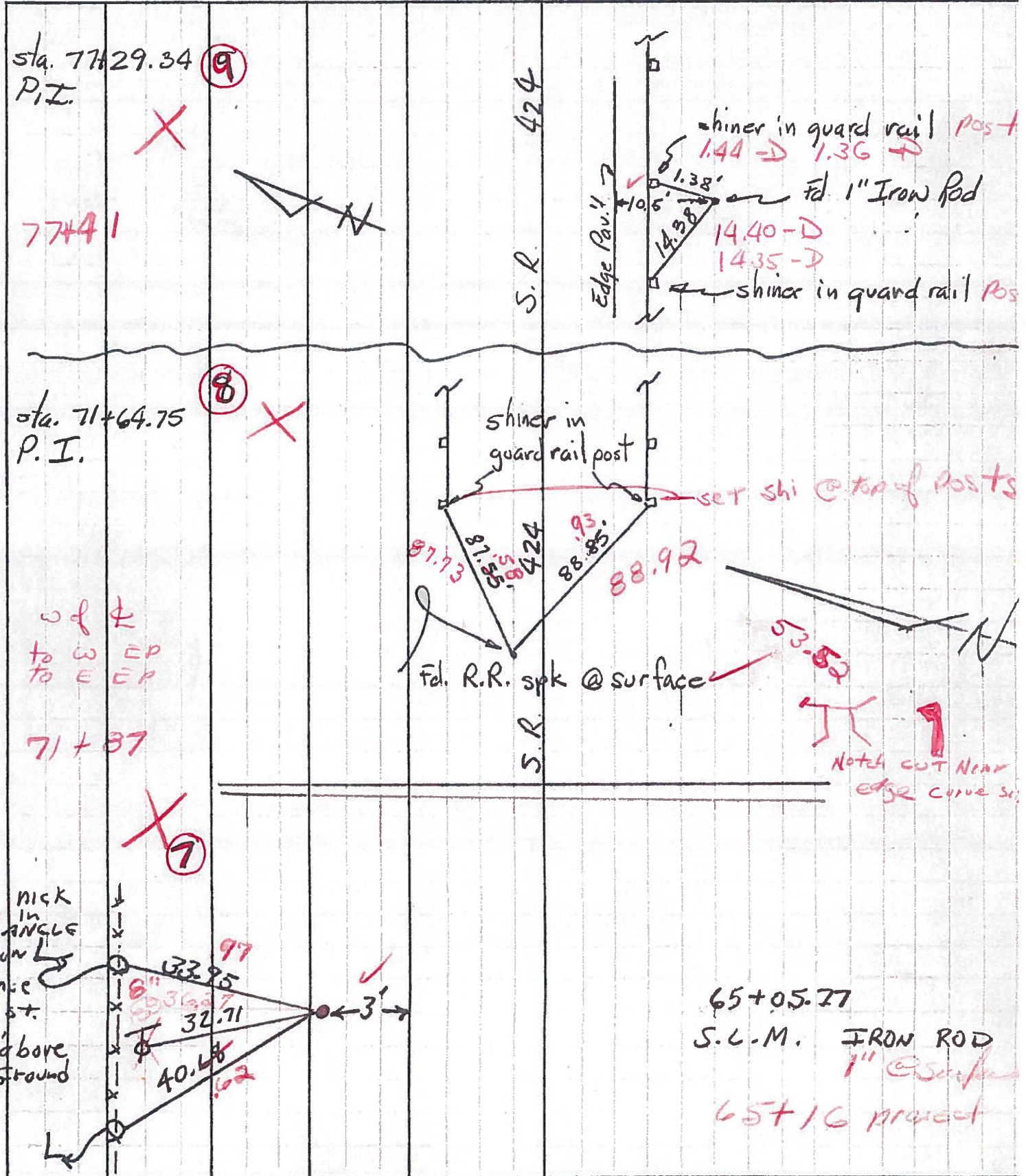
P.I. STA. 71+64.75-REC.

Notch near Edge, 2' up on Curve
Sign Post

PERSONNEL TITLE PERSONNEL TITLE
 Tomsic _____
 Neusek _____
 Vangs _____

COUNTY HENRY DATE MAY - 2 - 74
 S. R. 424 WEATHER cloudy
 SEC. _____ TEMP. 60°

DESCRIPTION Reference 424 0+00 = Defiance Co. line
 LEFT CENTER LINE RIGHT JOB NO.



| PERSONNEL | TITLE | PERSONNEL | TITLE | PERSONNEL | TITLE | PERSONNEL | TITLE |
|-----------|-------|-----------|-------|-------------|------------------------------|-----------|----------|
| Loays | | | | COUNTY | He. | DATE | 12-20-54 |
| Pessafall | | | | S. R. | 24 | WEATHER | Cloudy |
| Latta | | | | SEC | Def. Co. Line to East | TEMP. | 20° |
| Beck | | | | DESCRIPTION | Witnesses to Control Points. | JOB NO. | |



checked 4-16-62

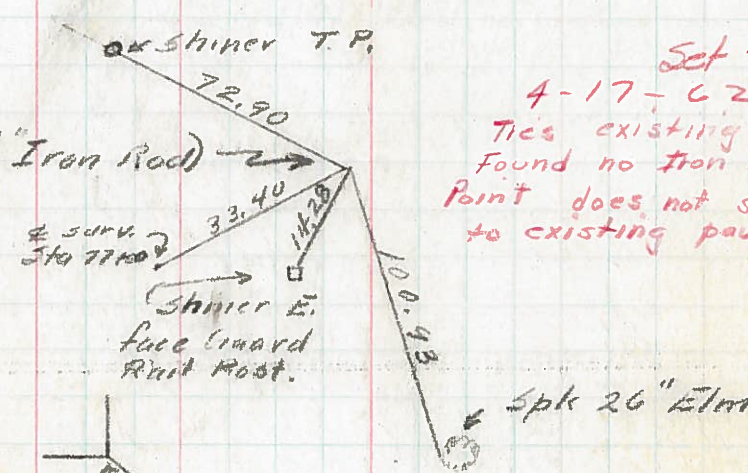
✓ P.I. Sta. 71+64.75 (Lag Screw in Pav't)

Δ = 6°-21' RT

D = 2°-20'

T = 179.25

8



Set 7-27-62 - Burnside
4-17-62
Ties existing
Found no iron rod - did not replace
Point does not seem to conform
to existing pavement

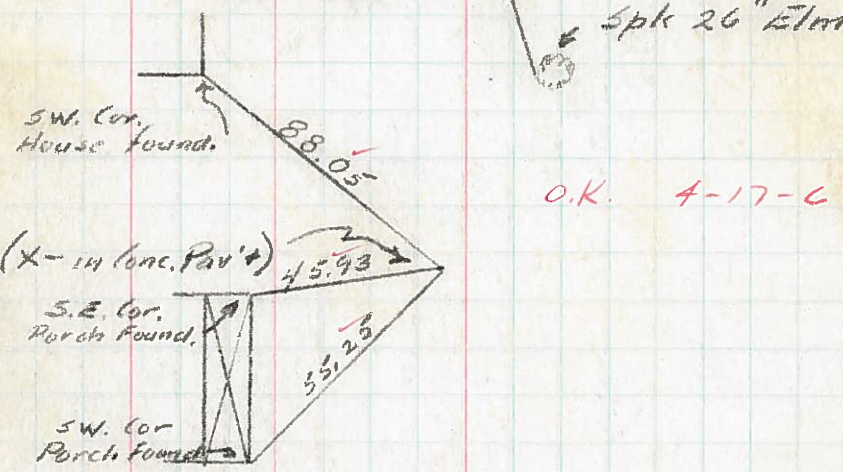
✓ P.I. Sta 77+29.34 (1/2" Iron Rod)

Δ = 16°-00' LT

D = 3°-00'

T = 268.42

9



O.K. 4-17-62

✓ P.I. Sta. 92+09.42 (X-14 Conc. Pav't)

Δ = 43°-47' RT

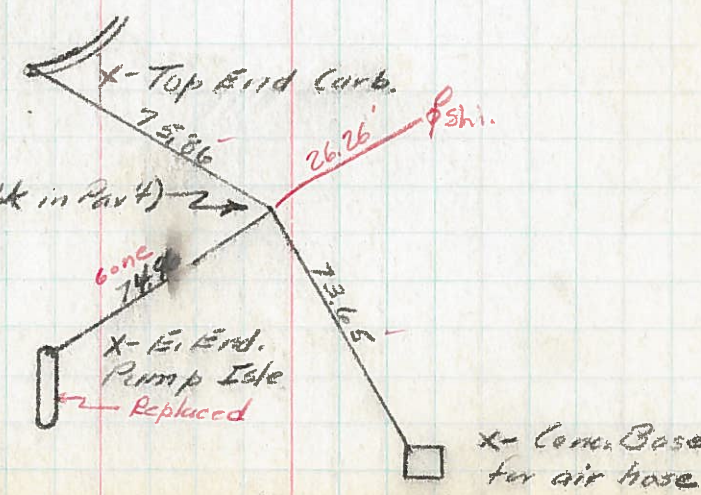
D = 5°-00'

Ls = 200'

Ts = 561.02

Δc = 33°-47'

10



✓ P.I. Sta 105+39.32 (R.R. Spk in Pav't)

Δ = 27°-00' LT

D = 14°-30'

T = 97.91

11

X- Corner Base for air hose