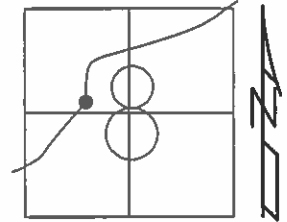


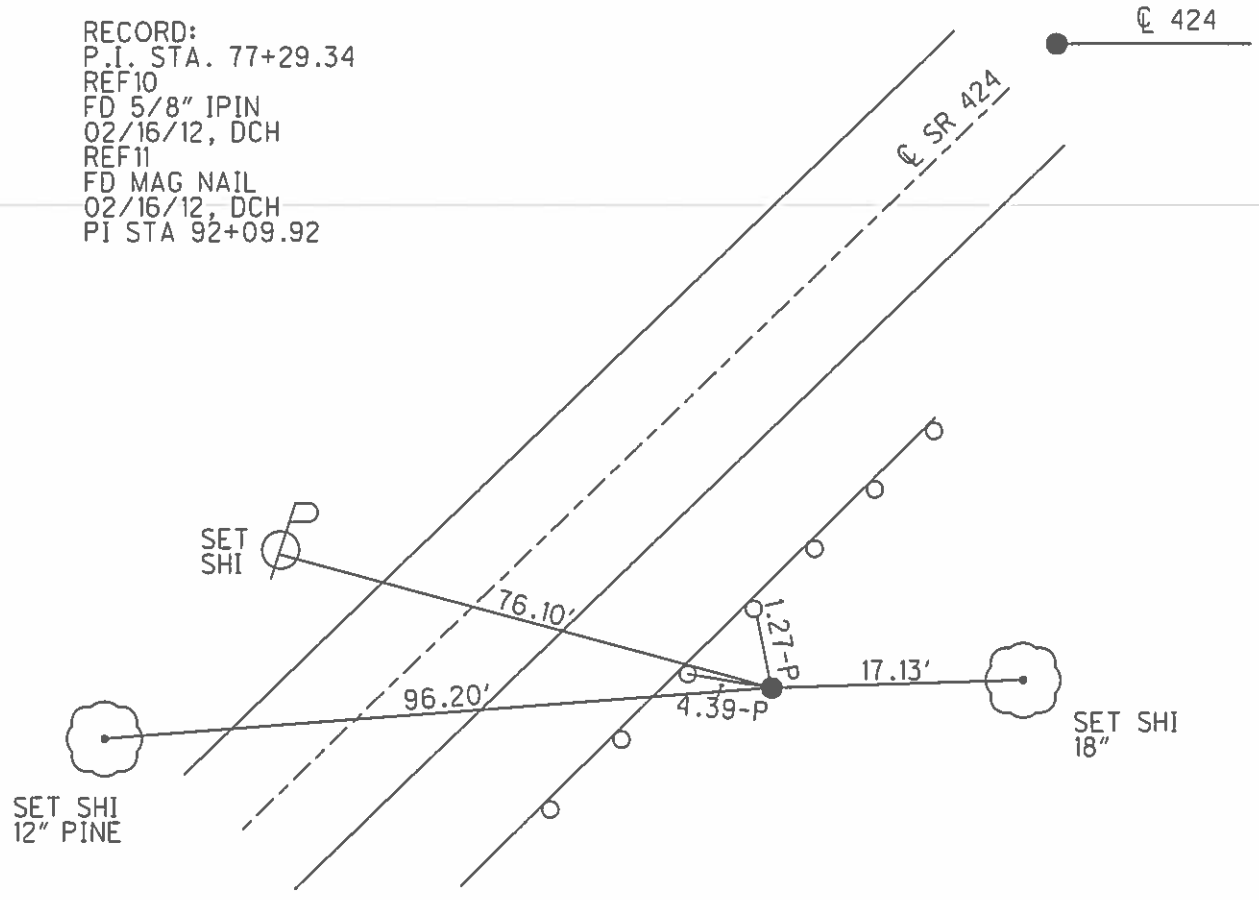
O.D.O.T. DISTRICT 2 SURVEY OFFICE (USE ONLY)

PERSONNEL _____ REFERENCE NO. 9 SHEET 9 OF 48
 NOTES HOMAN DATE 03/06/12 ROUTE SR 424
 H.C. HOMAN WEATHER CLOUDY COUNTY HENRY
 R.C. ROUSOS TEMP. 40° TOWNSHIP FLATROCK
 _____ SECTION 8
 _____ T 4 N R 6 E

TYPE MONUMENT 1" IRON ROD
~~ON SURFACE~~ - BELOW 3"
~~LEFT - C PAV'T~~ - RIGHT 22.2
10.9 TO RT EDGE PAVEMENT
 S.L.M. 77+29
 Grid: Northing: 606349.855 Easting: 1499114.107



RECORD:
 P.I. STA. 77+29.34
 REF10
 FD 5/8" IPIN
 02/16/12, DCH
 REF11
 FD MAG NAIL
 02/16/12, DCH
 PI STA 92+09.92



O.D.O.T. DISTRICT 2 SURVEY OFFICE

PERSONNEL

REFERENCE NO. 9

SHEET 9 OF 43

NOTES HOFFMAN

H.C. LOEHRKE

DATE 4-1-91

ROUTE SR 424

R.C. BARNHART

WEATHER CLOUDY

COUNTY HENRY

TEMP. 40°

TOWNSHIP FLAT ROCK

SECTION 8

T 4 N R 6 E

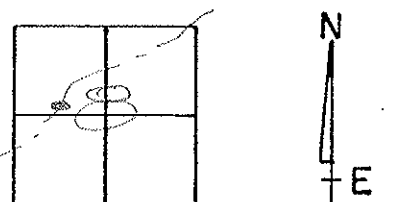
TYPE MONUMENT 1" IRON ROD

ON SURFACE - BELOW 3"

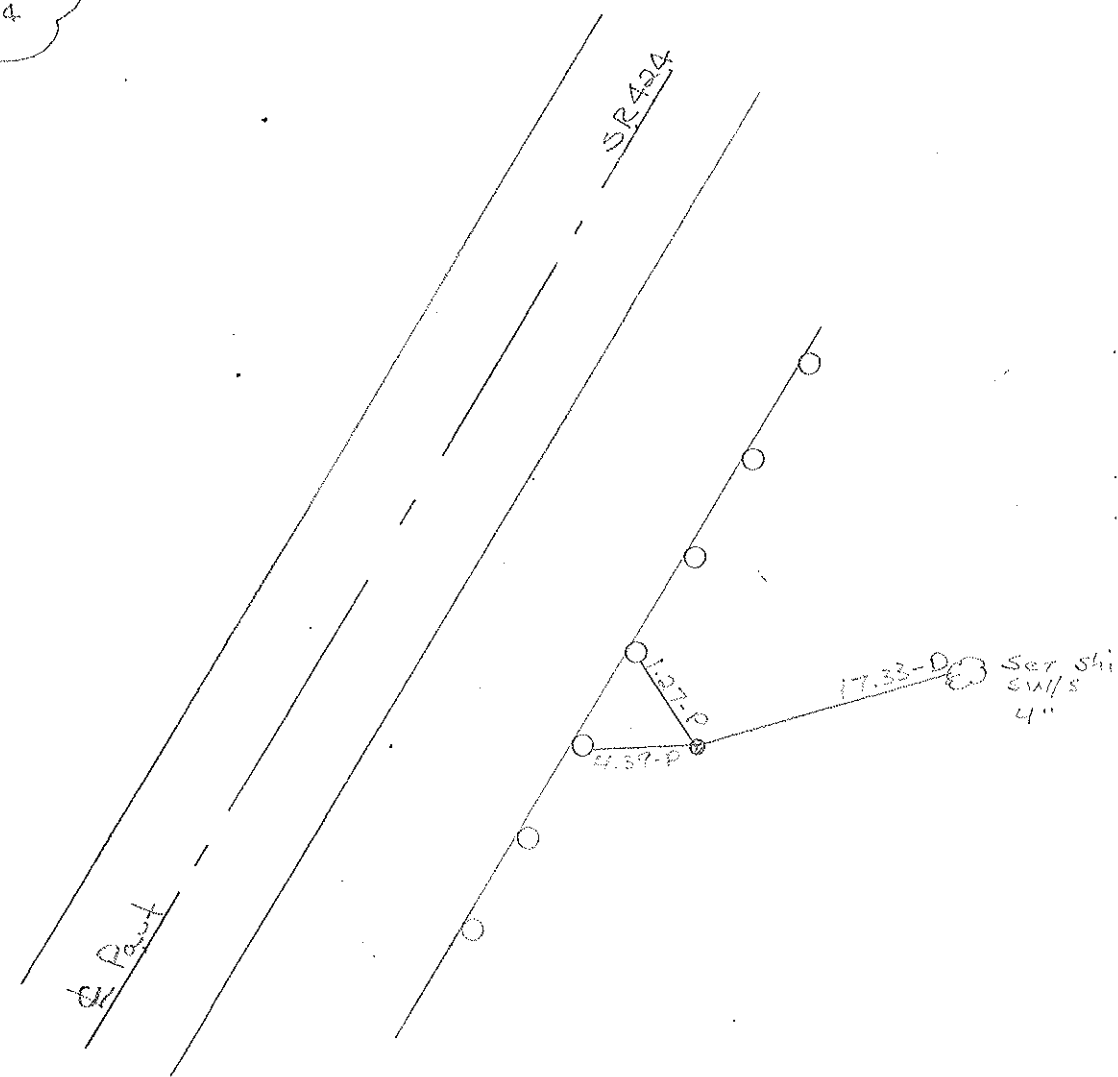
LEFT - C PAV'T. - RIGHT 22.2

10.9 TO RT EDGE PAVEMENT

S.L.M. 77+29



Records:
P.I. sta. 77+29.34



County Henry S.R. 424

Township FLATROCK

Section 8

T4N, R6E

Personnel Hoffman
Householder

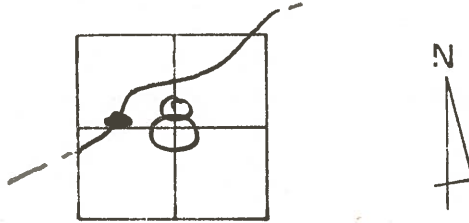
Date 6-17-81

Weather Clear

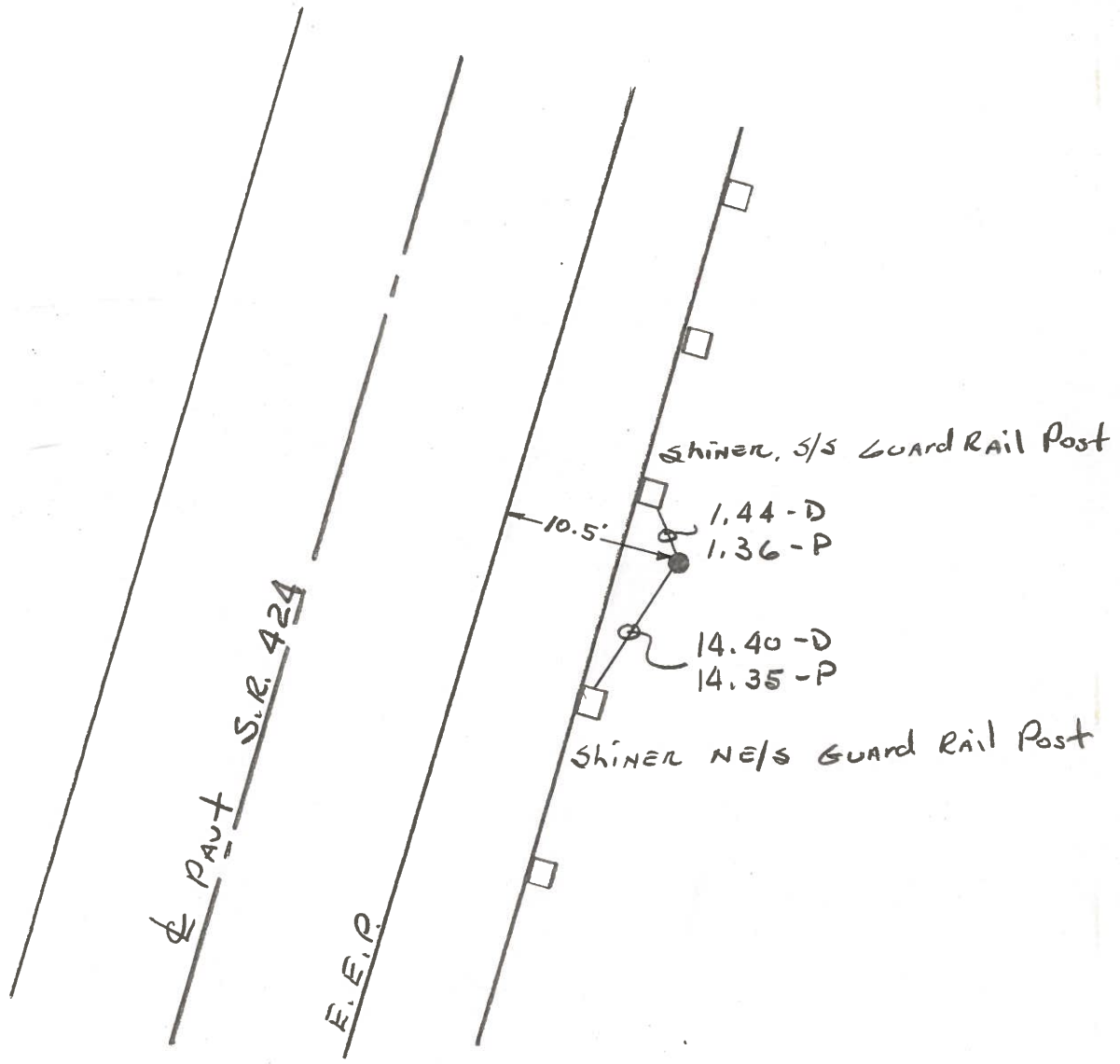
Temp. +70°

OK
10-26-81
S.W.H.

#9

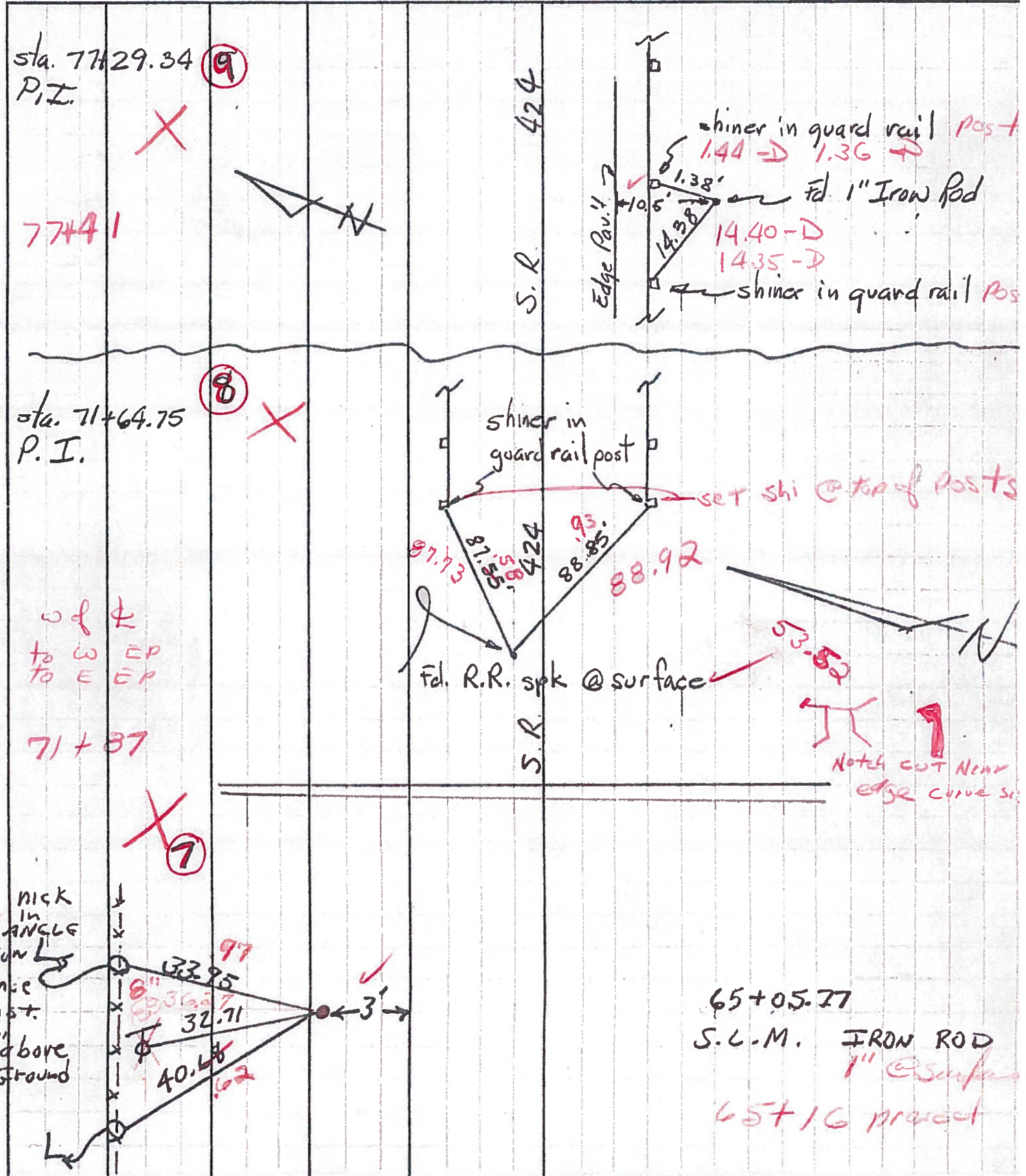


Fd. 1" IRON Rod, 2" Below Surface PROJECT STA ± 77 + 41
21.9 S. OF E PAVE.



P.I. STA. 77 + 29.34 - REC.

PERSONNEL Tomsic	TITLE	PERSONNEL	TITLE	COUNTY	HENRY	DATE	MAY - 2 - 74
Neusex				S. R.	424	WEATHER	cloudy
Yangs				SEC.		TEMP.	60°
DESCRIPTION	Reference	424	0+00 = Defiance Co. line	JOB NO.			



4.1 w of E
8.1 to W EP
5.5 to E EP

65+05.77
S.L.M. IRON ROD
1" @ surface
65+16 project

PERSONNEL	TITLE	PERSONNEL	TITLE	PERSONNEL	TITLE	PERSONNEL	TITLE
Loays				COUNTY	He.	DATE	12-20-54
Pessafall				S. R.	24	WEATHER	Cloudy
Latta				SEC	Def. Co. Line to East	TEMP.	20°
Beck				DESCRIPTION	Witnesses to Control Points.	JOB NO.	



checked 4-16-62

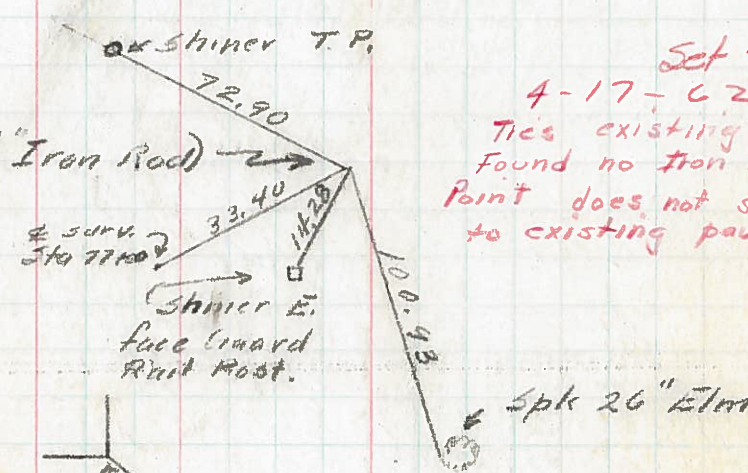
✓ P.I. Sta. 71+64.75 (Lag Screw in Pav't)

Δ = 6°-21' RT

D = 2°-20'

T = 179.25

(8)



Set 7-27-62 - Burnside

4-17-62

Ties existing

Found no iron rod - did not replace

Point does not seem to conform to existing pavement

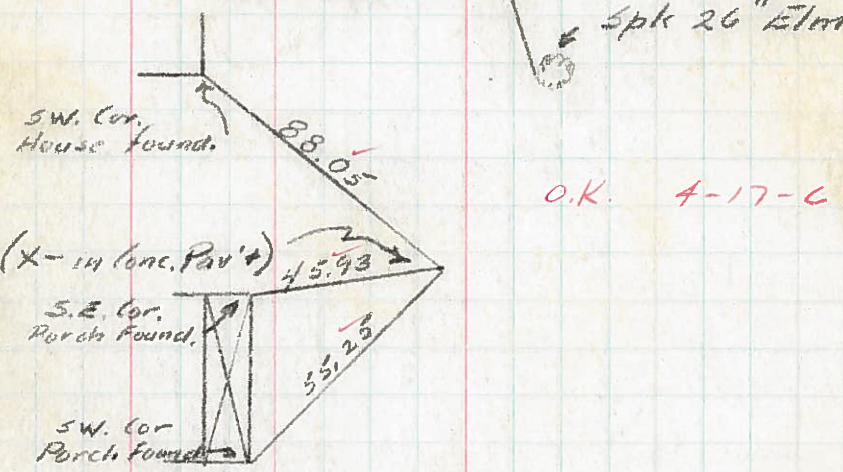
✓ P.I. Sta 77+29.34 (1/2" Iron Rod)

Δ = 16°-00' LT

D = 3°-00'

T = 268.42

(9)



O.K. 4-17-62

✓ P.I. Sta. 92+09.42 (X-14 Conc. Pav't)

Δ = 43°-47' RT

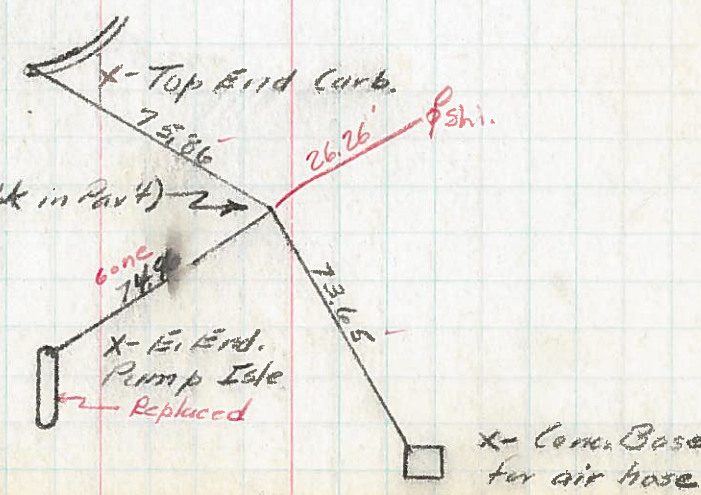
D = 5°-00'

Ls = 200'

Ts = 561.02

Δc = 33°-47'

(10)



✓ P.I. Sta 105+39.32 (R.R. Spk in Pav't)

Δ = 27°-00' LT

D = 14°-30'

T = 97.91

(11)