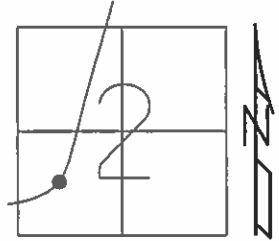


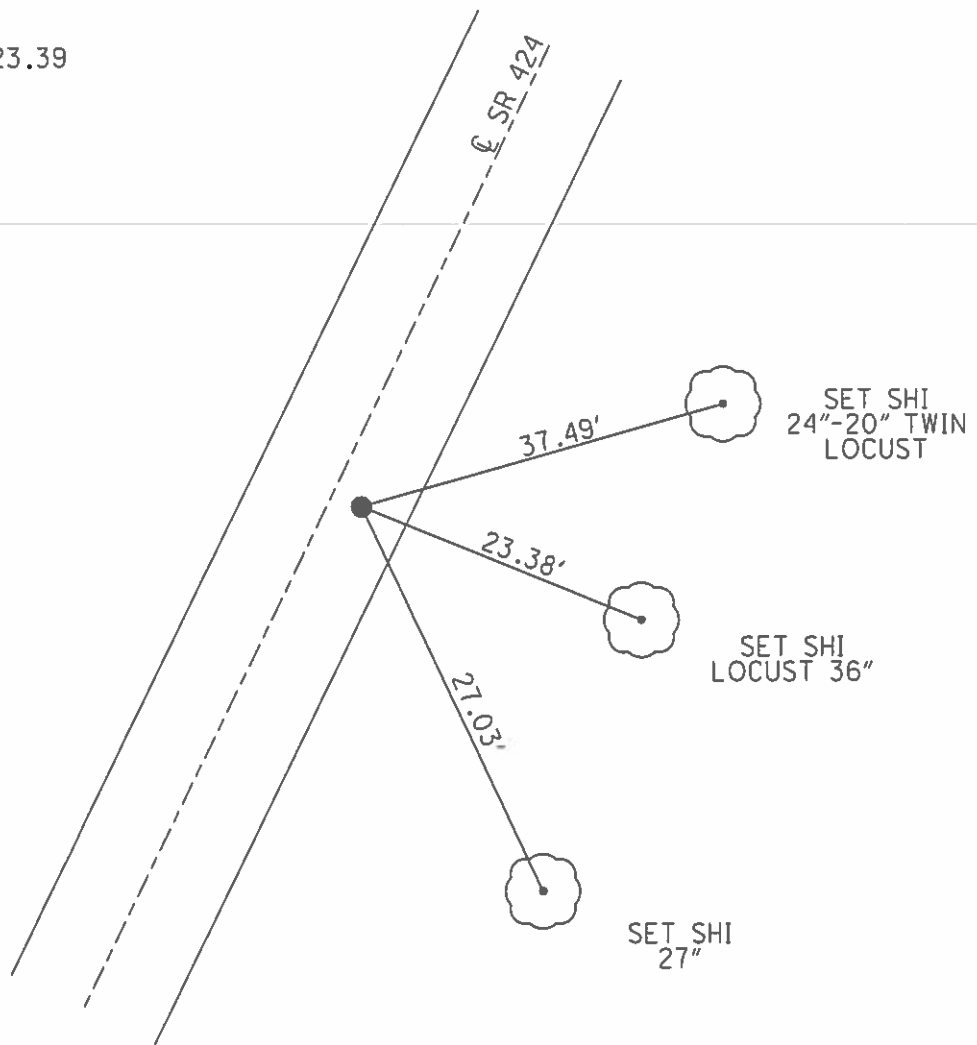
**O.D.O.T. DISTRICT 2 SURVEY OFFICE (USE ONLY)**

PERSONNEL	REFERENCE NO.	<u>13</u>	SHEET	<u>24</u>	OF	<u>48</u>
NOTES	<u>HOMAN</u>	DATE	<u>03/07/12</u>	ROUTE	<u>SR 424</u>	
H.C.	<u>HOMAN</u>	WEATHER	<u>CLEAR</u>	COUNTY	<u>HENRY</u>	
R.C.	<u>ROUSOS</u>	TEMP.	<u>50°</u>	TOWNSHIP	<u>FLATROCK</u>	
				SECTION	<u>2</u>	
				T	<u>4</u>	N
				R	<u>6</u>	E

TYPE MONUMENT \_\_\_\_\_ PK/WASHER \_\_\_\_\_  
 ON SURFACE - ~~BELOW~~ \_\_\_\_\_ 3"  
~~LEFT - C PAV'T~~ - RIGHT \_\_\_\_\_ 4.5'  
 \_\_\_\_\_ 7.7 TO RT EDGE PAVEMENT  
 S.L.M. \_\_\_\_\_ 263+95  
 Grid: Northing: 611746.479 Easting: 1515418.917



RECORD:  
 P.I. STA. 264+23.39  
 OK FD  
 12/29/08  
 2" DEEP  
 #122  
 REF25  
 FD PK  
 02/21/12 DCH



# O.D.O.T. DISTRICT 2 SURVEY OFFICE

PERSONNEL \_\_\_\_\_

REFERENCE NO. 13

SHEET 24 OF 43

NOTES Hoffman

H.C. Looniks

R.C. R. K. ...

DATE 4-3-91

WEATHER clear

TEMP. 40°

ROUTE SR 424

COUNTY HENRY

TOWNSHIP FLATROCK

SECTION 2

T 4 N R 6 E

set P.K. / WASHER  
5-23-91  
C.H.

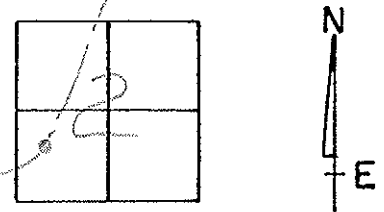
TYPE MONUMENT P.K. / WASHER

ON SURFACE - BELOW 1/8"

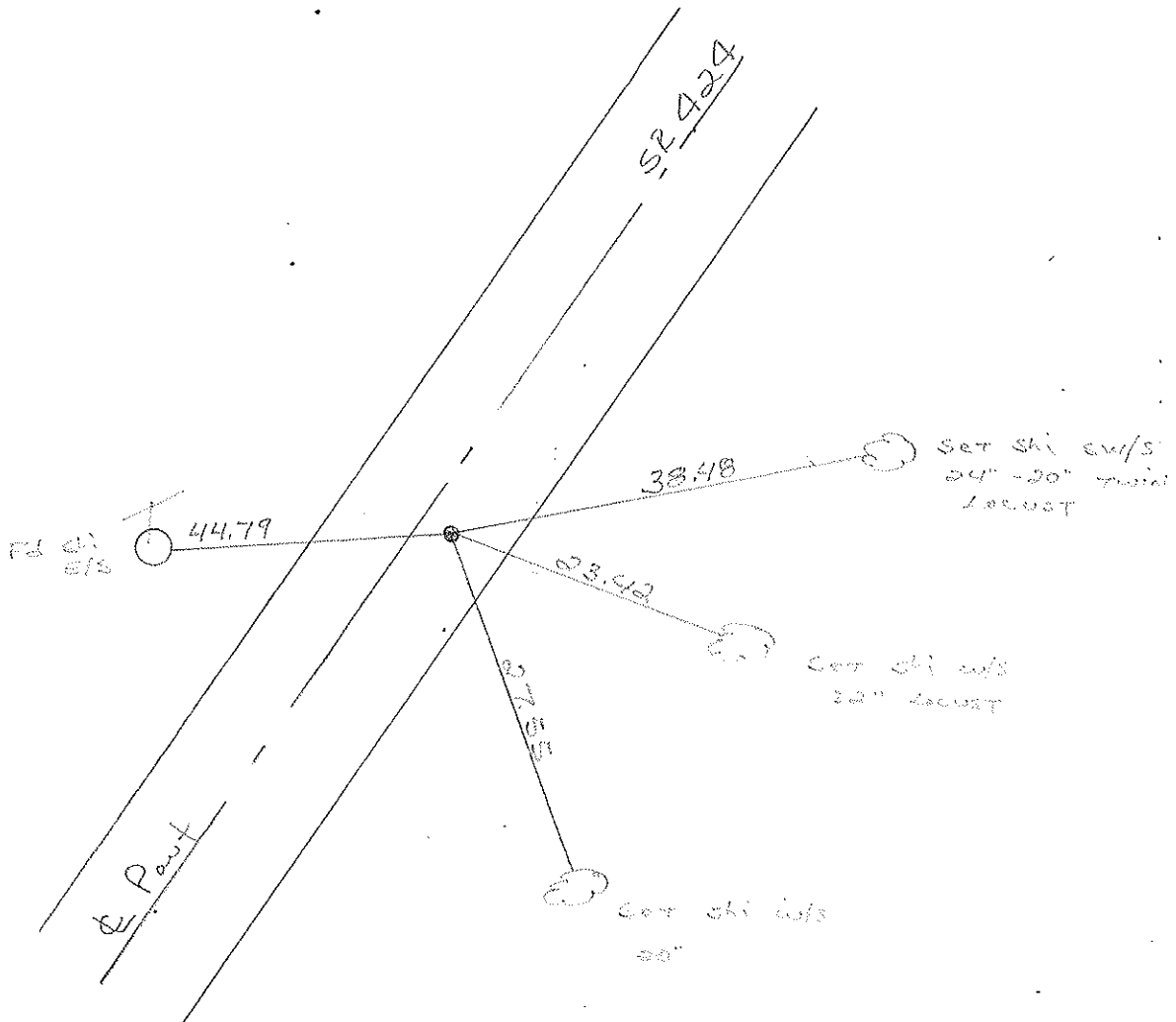
LEFT - CL PAV'T. - RIGHT 4.5'

7.7 TO RT. EDGE PAVEMENT

S.L.M. 263 + 95



RECORD:  
P.I. Sta. 264+23.39



Q.D.O.T. DISTRICT 2 SURVEY OFFICE

SHEET \_\_\_\_\_ OF \_\_\_\_\_

County HENRY S.R. 424

Date MARCH 29, 83

Township FLATROCK

Weather CLEAR

Section 2

Temp. +30°

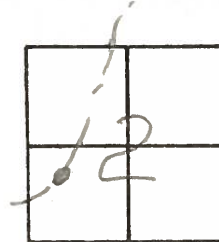
T4N, R6E

Personnel HOFFMAN

LOEBKE

HOUSEHOLDER

BARNHISEL



Fd R.R. spk @ SURFACE

4.5' Rt of & Post

7.3' TO E.E.P.

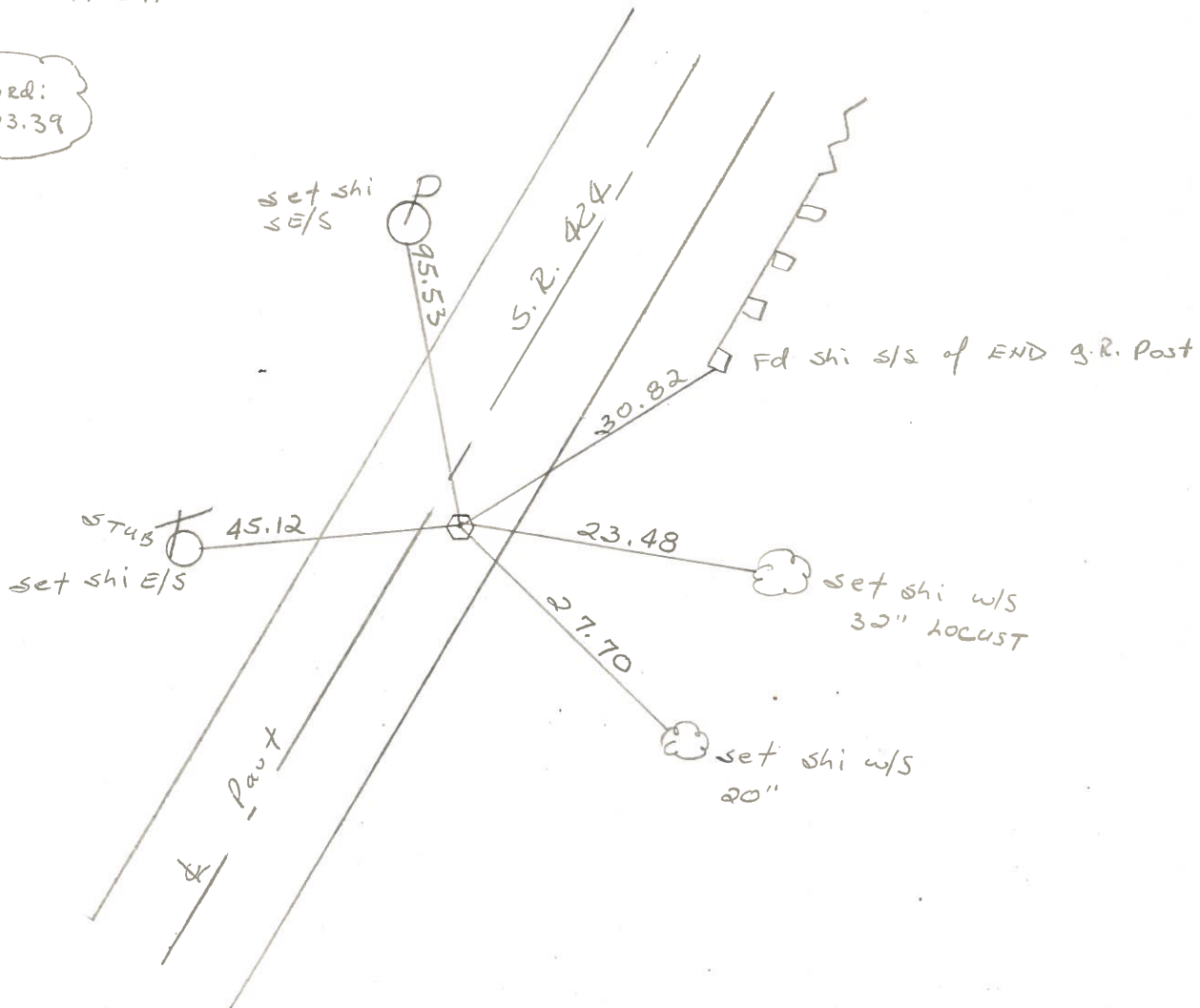
15.7' TO W.E.P.

(13)

SLM 264+37

Set P.K./washer  
5-31-83 SWH

P.I. Record:  
264+23.39



PERSONNEL TITLE PERSONNEL TITLE

Tomsic \_\_\_\_\_

Neuser \_\_\_\_\_

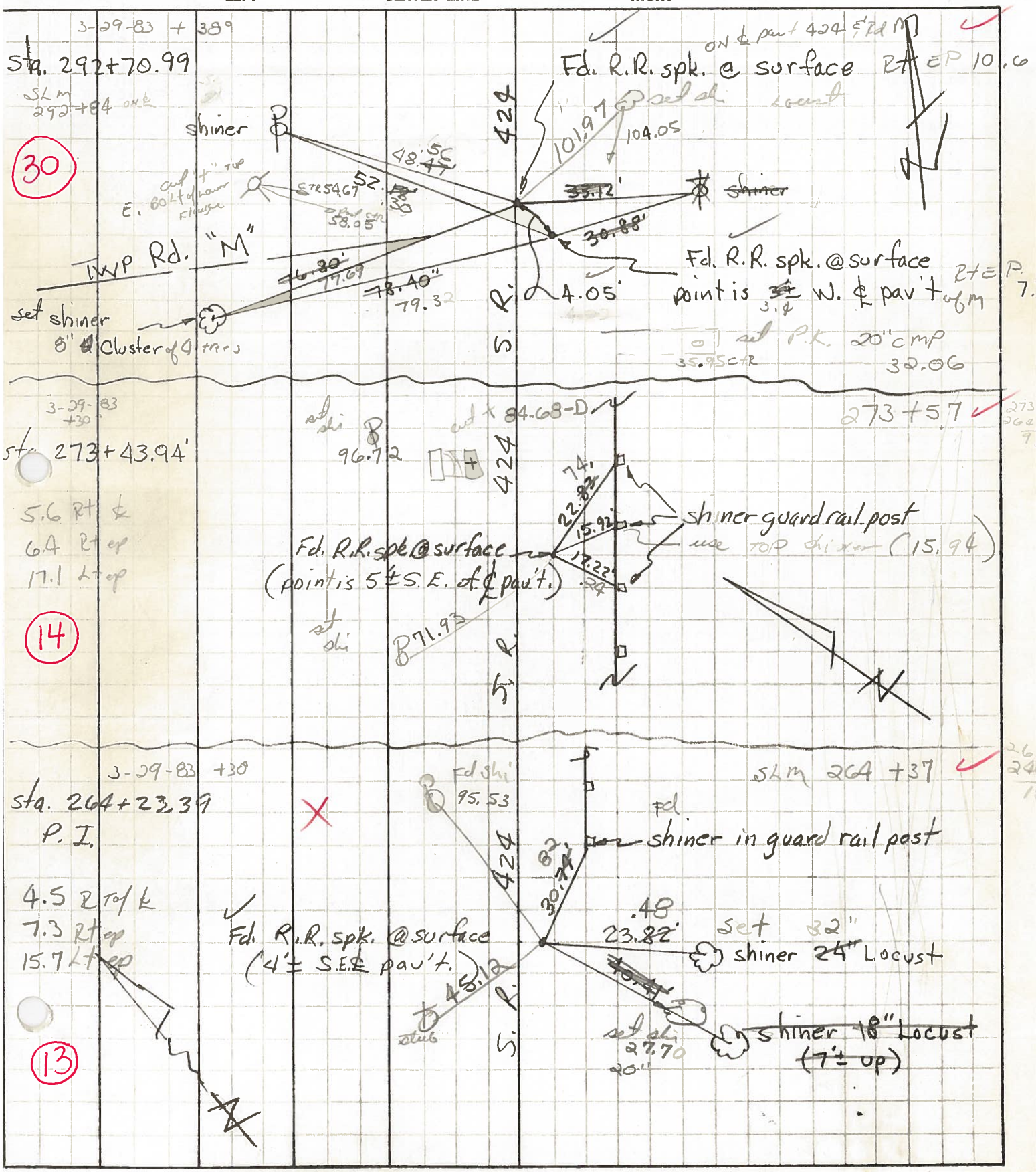
Granata \_\_\_\_\_

COUNTY HENRY DATE MAY 30, 1974

S. R. 424 WEATHER \_\_\_\_\_

SEC. \_\_\_\_\_ TEMP. \_\_\_\_\_

DESCRIPTION LEFT CENTER LINE RIGHT JOB NO.



30

14

13

3-29-83 + 389

Sta. 292+70.99

SLM 292+84 OK

shiner

WYP Rd. "M"

set shiner 8" Cluster of 9 trees

424

48.56

52.80

57.54

58.05

78.40"

79.32

S. R.

ON & part 424 S.R.M

F.d. R.R. spk. @ surface RT EP 10.0

101.9

104.05

35.72

shiner

F.d. R.R. spk. @ surface point is 3.4 W. & part of m

01 at P.K. 20' CMP 32.06

35.95

3-29-83 + 30

Sta. 273+43.94

5.6 RT &

6.4 RT ep

17.1 L top

424

96.72

74.1

22.82

15.92

17.22

71.93

S. R.

273+57

shiner guard rail post use TOP shi. (15.94)

shiner in guard rail post

3-29-83 + 30

Sta. 264+23.39

P. I.

4.5 RT of k

7.3 RT ep

15.7 L top

424

95.53

30.72

45.12

S. R.

SLM 264 + 37

shiner in guard rail post

set 32" shiner 24" Locust

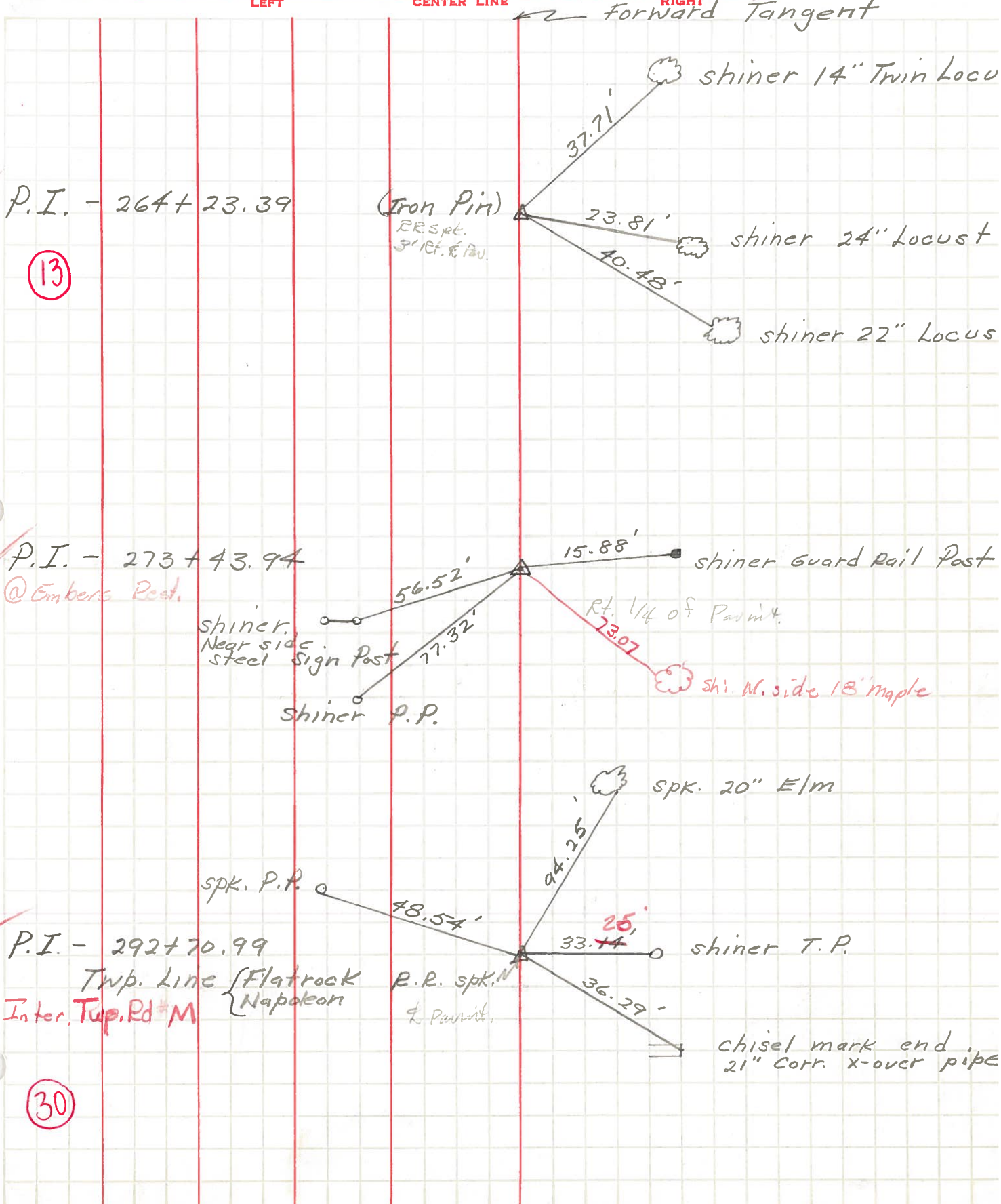
shiner 18" Locust (7" up)

set shi 27.70 20.1



PERSONNEL	TITLE	PERSONNEL	TITLE	COUNTY	DATE	WEATHER	TEMP.
Hoover				Henry	4-		
Hoff				U.S.R. 24			
Delventhal							

DESCRIPTION Witnesses to Control Points (P.I.'s) JOB NO. \_\_\_\_\_



(13)

(30)