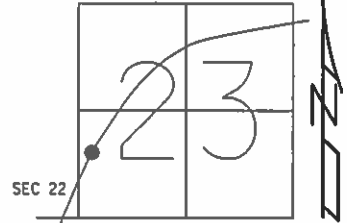


O.D.O.T. DISTRICT 2 SURVEY OFFICE (USE ONLY)

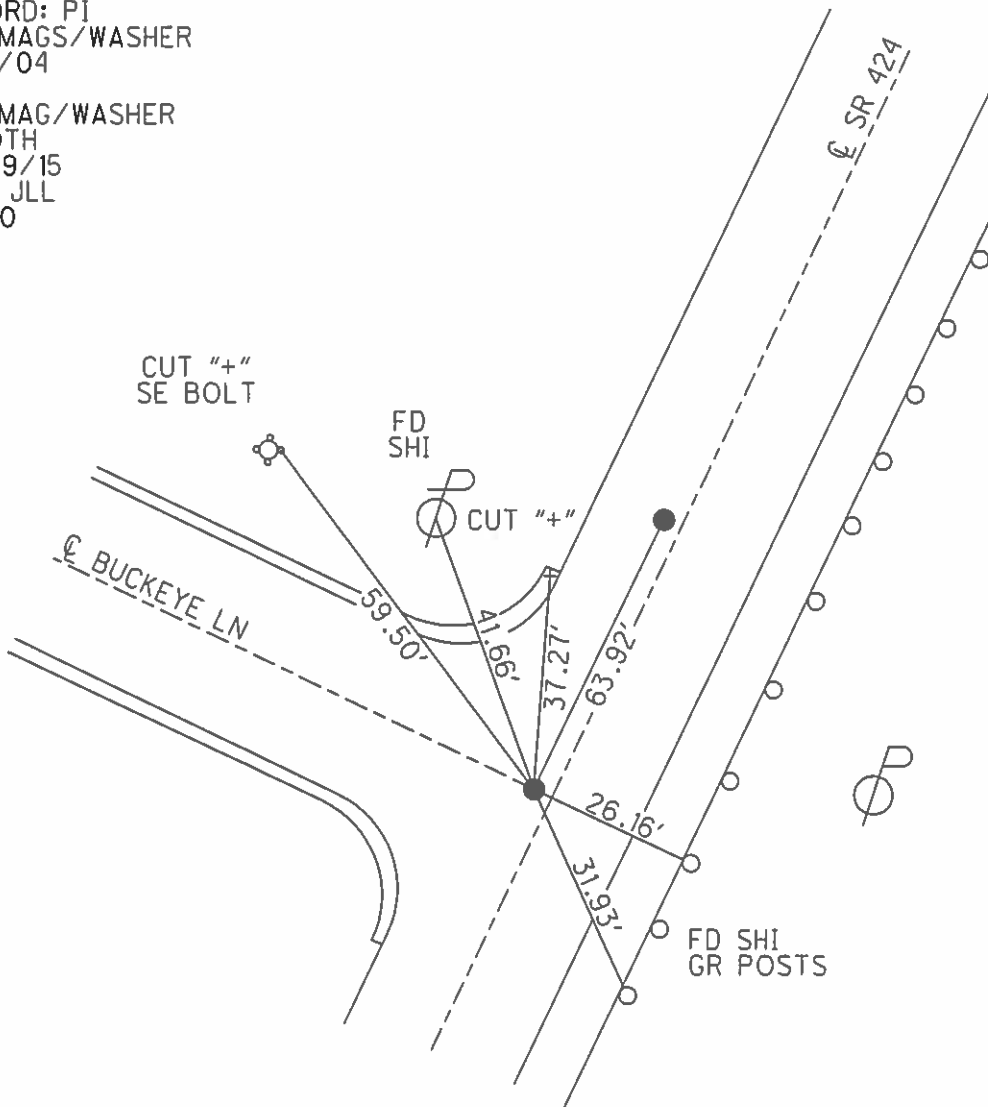
PERSONNEL _____ REFERENCE NO. 40 SHEET 4 OF 25
 NOTES HOMAN DATE 07/07/14 ROUTE SR 424
 H.C. LEU WEATHER CLOUDY COUNTY HENRY
 R.C. THOMAS TEMP. 75° TOWNSHIP NAPOLEAN
 _____ SECTION 23
 _____ T 5 N R 6 E

TYPE MONUMENT _____ MAG/WASHER _____
 ON SURFACE - ~~BELOW~~ _____ ON _____
 LEFT - ~~C PAV'T~~ - RIGHT 3.3'
15.3' TO RT EDGE PAVEMENT
 S.L.M. 418+91

Grid: Northing: 626295.914 Easting: 1515566.346



RECORD: PJ
 SET MAGS/WASHER
 11/01/04
 DCH
 SET MAG/WASHER
 @ BOTH
 07/29/15
 DCH, JLL
 REF 40



O.D.O.T. DISTRICT 2 SURVEY OFFICE

PERSONNEL

REFERENCE NO. 40

SHEET 2 OF 29

NOTES HOMAN

H.C. BARNHISEL

R.C. HOOVER

DATE 9-01-04

WEATHER SUN

TEMP. +72°

ROUTE S.R. 424

COUNTY HENRY

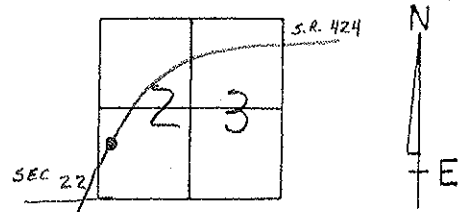
TOWNSHIP NAPOLEON

SECTION 23

T 5 N R 6 E

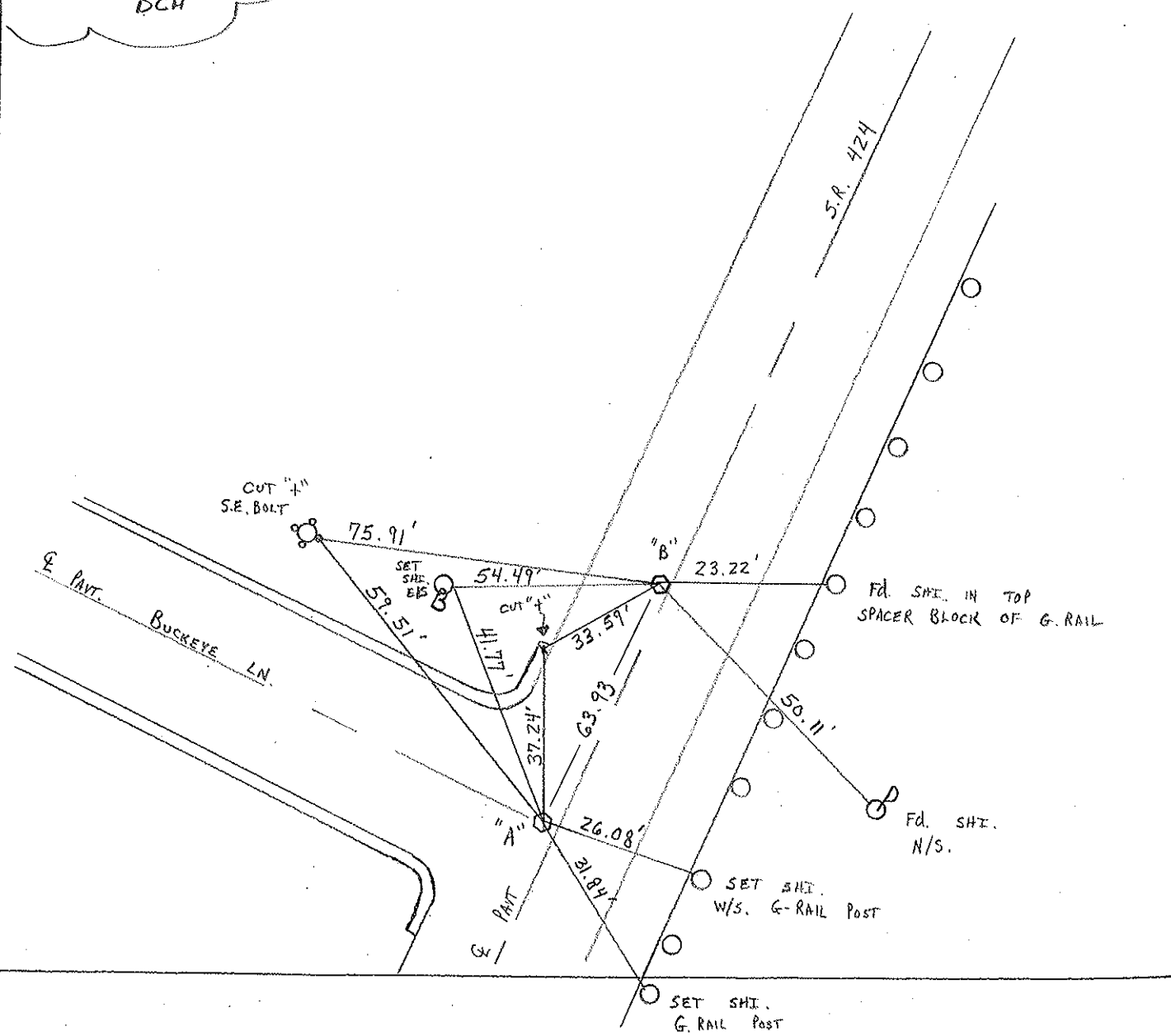
MC-DRAWING

	Pt "A"	Pt "B"
TYPE MONUMENT	P.K. / WASHER	P.K. / WASHER
ON SURFACE - BELOW	SURFACE	SURFACE
LEFT- & PAW'T. - RIGHT	3.3' LT &	0.5' LT &
15.3 TO RT EDGE PAVEMENT		11.0' TO LT. EOP
S.L.M.	418 + 91	419 + 56



Reset Nags/Washers
11/01/04
DCH

RECORD = PI



O.D.O.T. DISTRICT 2 SURVEY OFFICE

PERSONNEL _____

REFERENCE NO. _____

SHEET _____ OF _____

NOTES BARNHISEL

H.C. _____

DATE 9-21-90

ROUTE 424

R.C. HOFFMAN

WEATHER CLEAR

COUNTY HENRY

TEMP. +65°

TOWNSHIP Napoleon

SECTION 23

T S N R W E

TYPE MONUMENT Sm RR Spk

ON SURFACE - BELOW yes

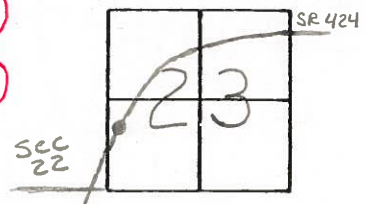
LEFT- & PAV'T. - RIGHT 0.5

11.7 TO LT EDGE PAVEMENT

S.L.M. 419+56

40A

40B



P.I.

Set P.K.'s & Washers
10-4-90
mB

