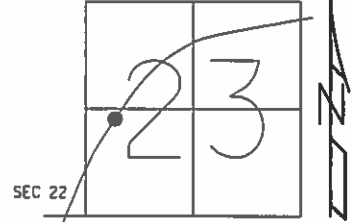


O.D.O.T. DISTRICT 2 SURVEY OFFICE (USE ONLY)

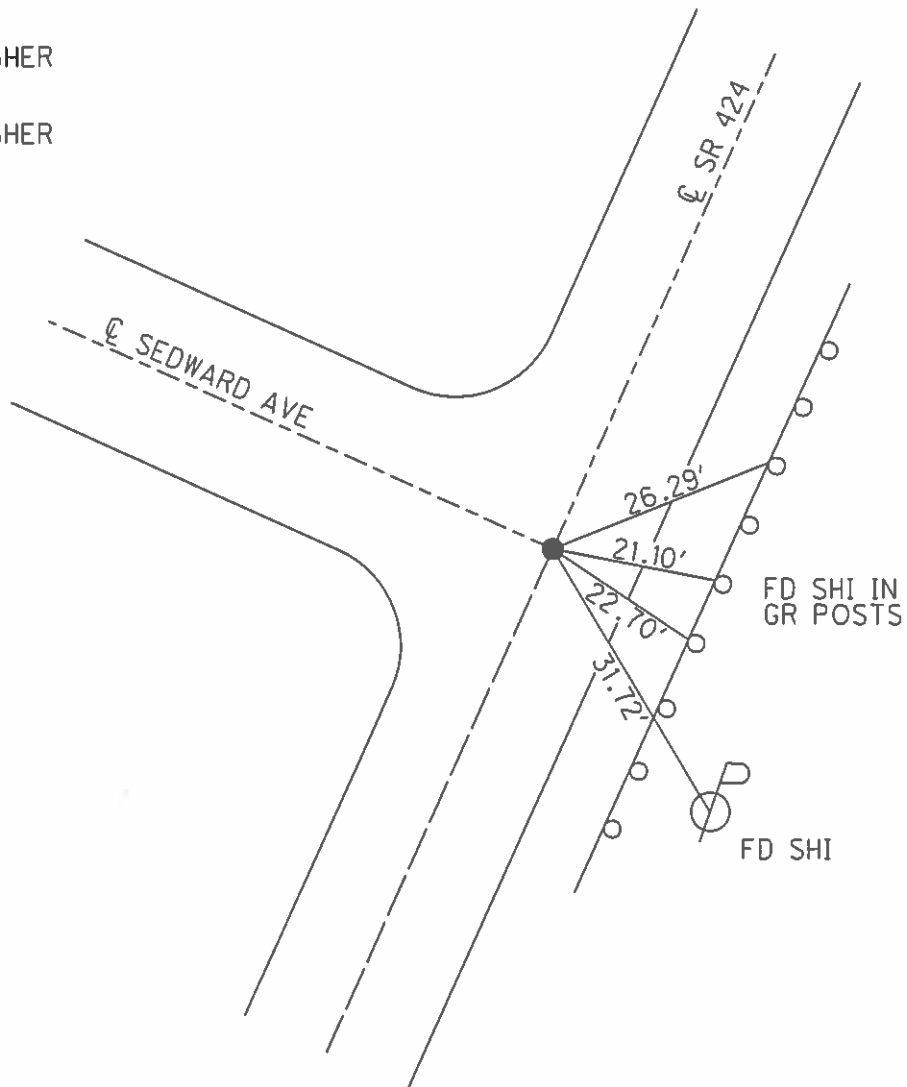
PERSONNEL _____ REFERENCE NO. 42 SHEET 7 OF 25
 NOTES HOMAN DATE 07/07/14 ROUTE SR 424
 H.C. LEU WEATHER CLOUDY COUNTY HENRY
 R.C. THOMAS TEMP. 75° TOWNSHIP NAPOLEAN
 _____ SECTION 23
 _____ T 5 N R 6 E

TYPE MONUMENT MAG/WASHER
 ON SURFACE - ~~BELOW~~ ON
~~LEFT - C PAVT - RIGHT~~ 3.8'
8.2' TO RT EDGE PAVEMENT
 S.L.M. 430+36

Grid: Northing: 627287.278 Easting: 1516134.794



RECORD:
 SET MAG/WASHER
 11/01/04
 DCH
 SET MAG/WASHER
 07/29/15
 DCH, JLL
 REF42



O.D.O.T. DISTRICT 2 SURVEY OFFICE

PERSONNEL

REFERENCE NO. 42

SHEET 4 OF 29

NOTES HOMAN

H.C. BARNHISEL

R.C. HOKER

MC-DRAWING

DATE 9-01-04

WEATHER SUN

TEMP. +74°

ROUTE S.R. 424

COUNTY HENRY

TOWNSHIP NAPOLEON

SECTION 23

T 5 N R 6 E

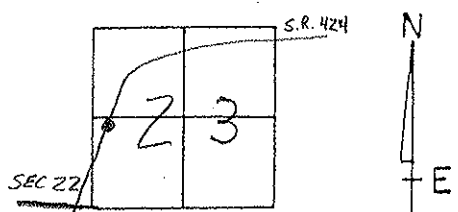
TYPE MONUMENT P.K. / WASHER

ON SURFACE - BELOW SURFACE

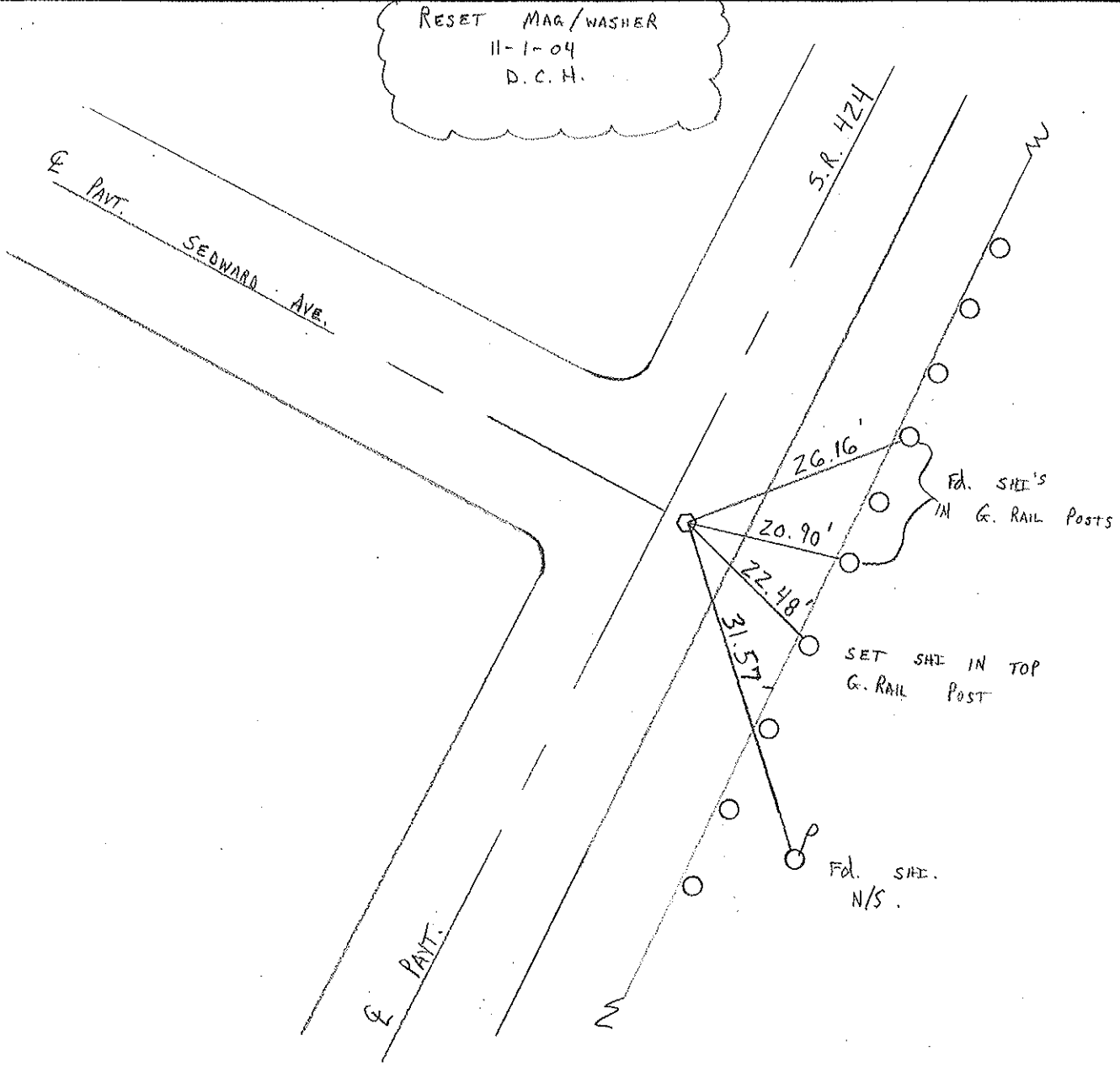
~~LEFT~~ - PAV'T. - RIGHT 3.8' RT ON SEWARD

8.2' TO RT. EDGE PAVEMENT

S.L.M. 430 + 36



RESET MAG/WASHER
 11-1-04
 D.C.H.



Fd. SHI.
N/S.

O.D.O.T. DISTRICT 2 SURVEY OFFICE

PERSONNEL _____ REFERENCE NO. _____ SHEET _____ OF _____

NOTES BARNHISEL

H.C. " "

R.C. HOFFMAN

DATE 9-21-90

WEATHER CLEAR

TEMP. +65°

ROUTE 424

COUNTY HENRY

TOWNSHIP NAPOLEON

SECTION 23

T 5 N R 6 E

TYPE MONUMENT P.K. NAIL

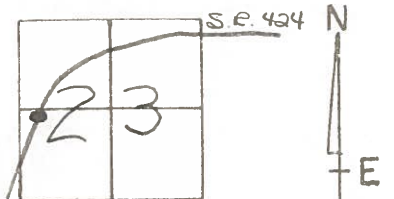
ON SURFACE - BELOW YES

LEFT - Q PAV'T. - RIGHT 4.0

S.I TO RT EDGE PAVEMENT

S.L.M. 430 + 36 (ON Q OF Sedward)

42



Sec 22

Set P.K. & Washer
10-4-90
mB

