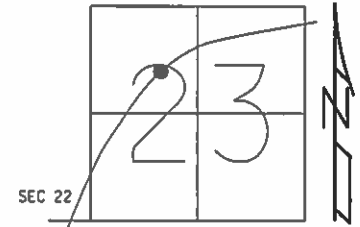


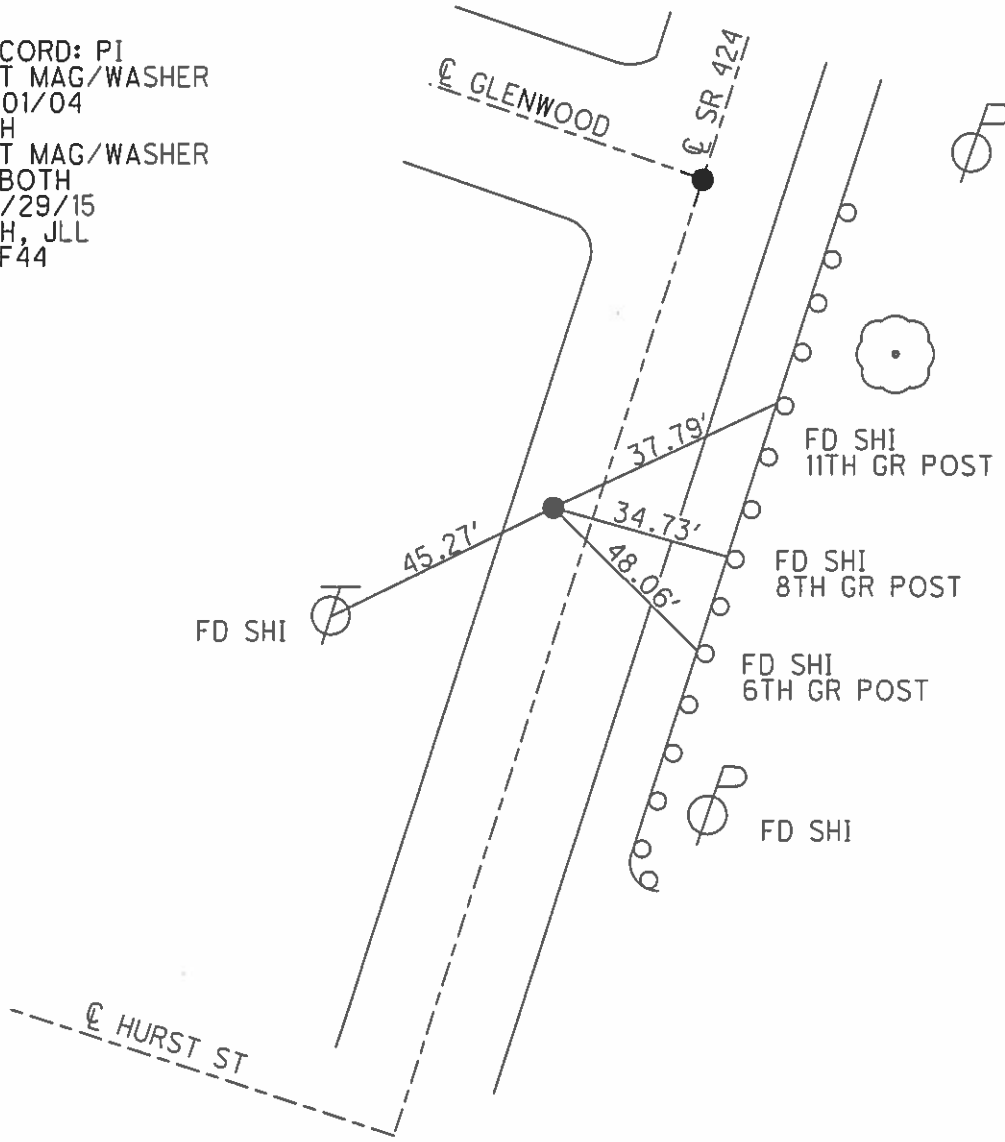
O.D.O.T. DISTRICT 2 SURVEY OFFICE (USE ONLY)

PERSONNEL _____ REFERENCE NO. 44 SHEET 9 OF 25
 NOTES HOMAN DATE 07/07/14 ROUTE SR 424
 H.C. LEU WEATHER CLOUDY COUNTY HENRY
 R.C. THOMAS TEMP. 75° TOWNSHIP NAPOLEAN
 _____ SECTION 23
 _____ T 5 N R 6 E

TYPE MONUMENT _____ MAG/WASHER _____
 ON SURFACE - ~~BELOW~~ _____ ON _____
 LEFT - ~~C PAV'T~~ - ~~RIGHT~~ _____ 9.0'
2.7' TO LT EDGE PAVEMENT
 S.L.M. _____ 448+01
 Grid: Northing: 628729.884 Easting: 1517147.522



RECORD: PI
 SET MAG/WASHER
 11/01/04
 DCH
 SET MAG/WASHER
 @ BOTH
 07/29/15
 DCH, JLL
 REF 44



O.D.O.T. DISTRICT 2 SURVEY OFFICE

PERSONNEL

REFERENCE NO. 44

SHEET 6 OF 29

NOTES Homan

H.C. BARNHISEL

DATE 9-01-04

ROUTE S.R. 424

R.C. HOOBER

WEATHER SUN

COUNTY HENRY

TEMP. +74°

TOWNSHIP NAPOLEON

MC-Drawing

SECTION 23

T 5 N 6 E

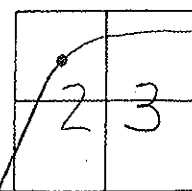
TYPE MONUMENT P.K. / WASHER

ON SURFACE - ~~BELOW~~ SURFACE

LEFT - ~~CL~~ PAV'T. - RIGHT 9.0' LT &

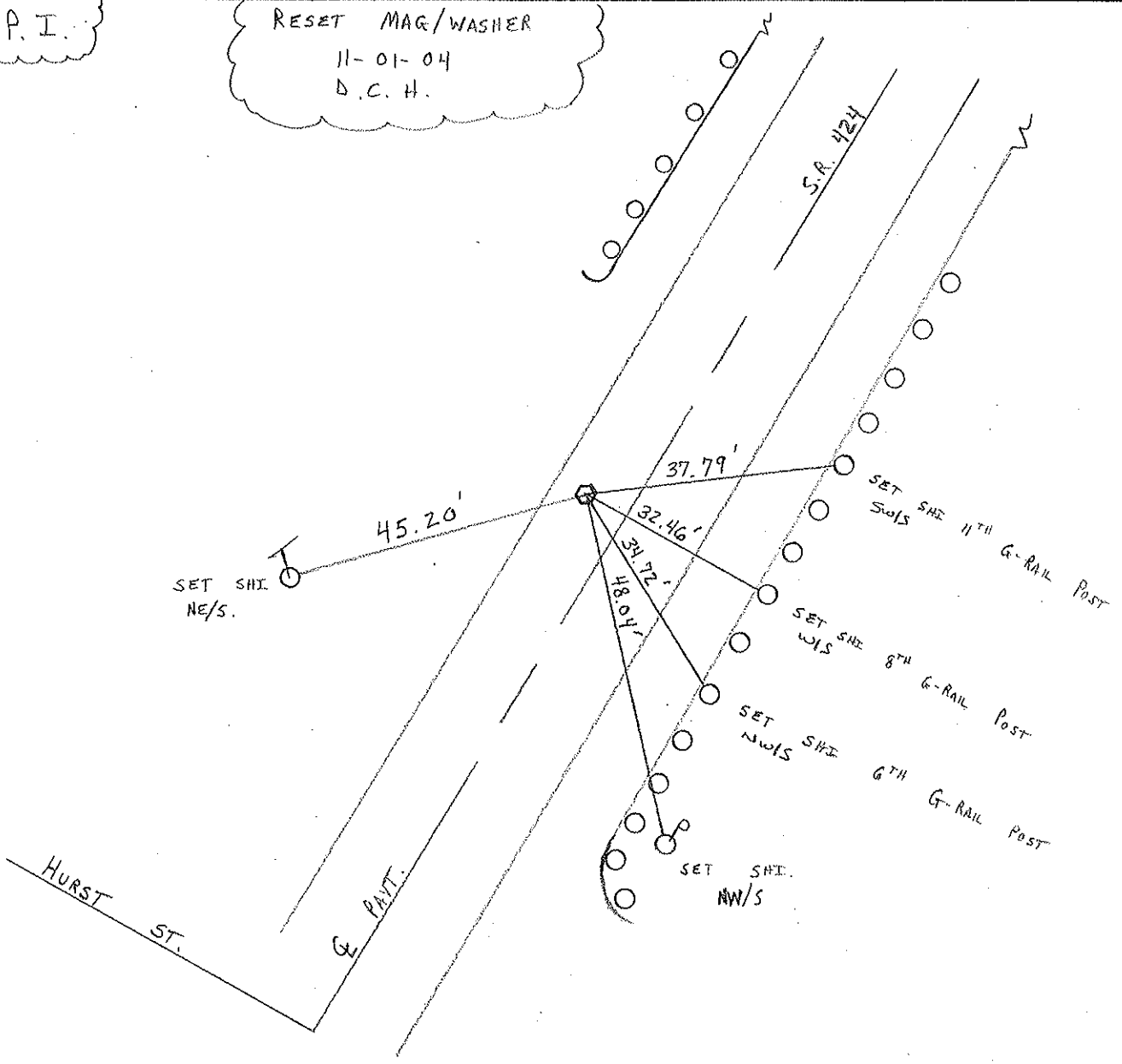
2.7' TO LT. EDGE PAVEMENT

S.L.M. 448+01



P.I.

RESET MAG/WASHER
 11-01-04
 D.C.H.



O.D.O.T. DISTRICT 2 SURVEY OFFICE

PERSONNEL _____

REFERENCE NO. _____

SHEET _____ OF _____

NOTES BARNHISEL

H.C. _____

DATE 9-21-90

ROUTE 424

R.C. HOFFMAN

WEATHER CLEAR

COUNTY HENRY

TEMP. +65°

TOWNSHIP Napoleon

SECTION 23

T 5 N R 6 E

TYPE MONUMENT Sm CE Spk

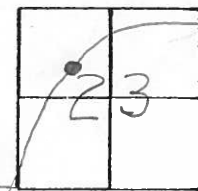
44

ON SURFACE - BELOW yes

LEFT- & PAV'T. - RIGHT 8.7

3.0 TO RT EDGE PAVEMENT

S.L.M. 448+01



Sec. 22

P.I.

Set P.K. & Washer
10-4-90
MB

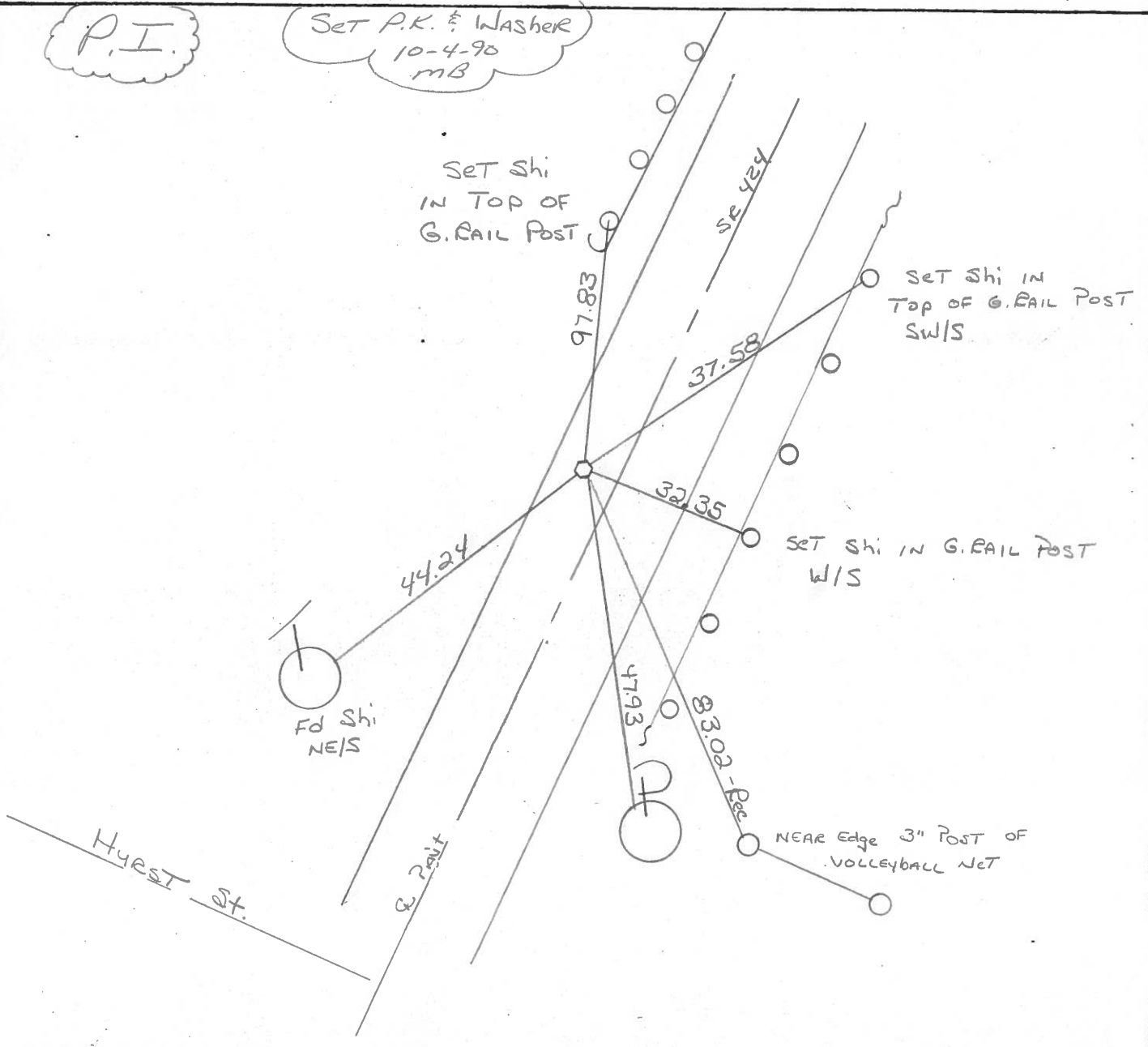
Set Shi
IN TOP OF
G. RAIL POST

Set Shi IN
TOP OF G. RAIL POST
SW/S

Set Shi IN G. RAIL POST
W/S

Fd Shi
NE/S

NEAR Edge 3" POST OF
VOLLEYBALL NET



County HENRY S.R. 424

Date 7-26-79

Township NAPOLEON

Weather CLEAR

Section 23

Temp. +80°

T5N, R6E

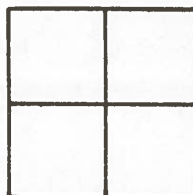
Personnel BURNSIDE

BOWERS

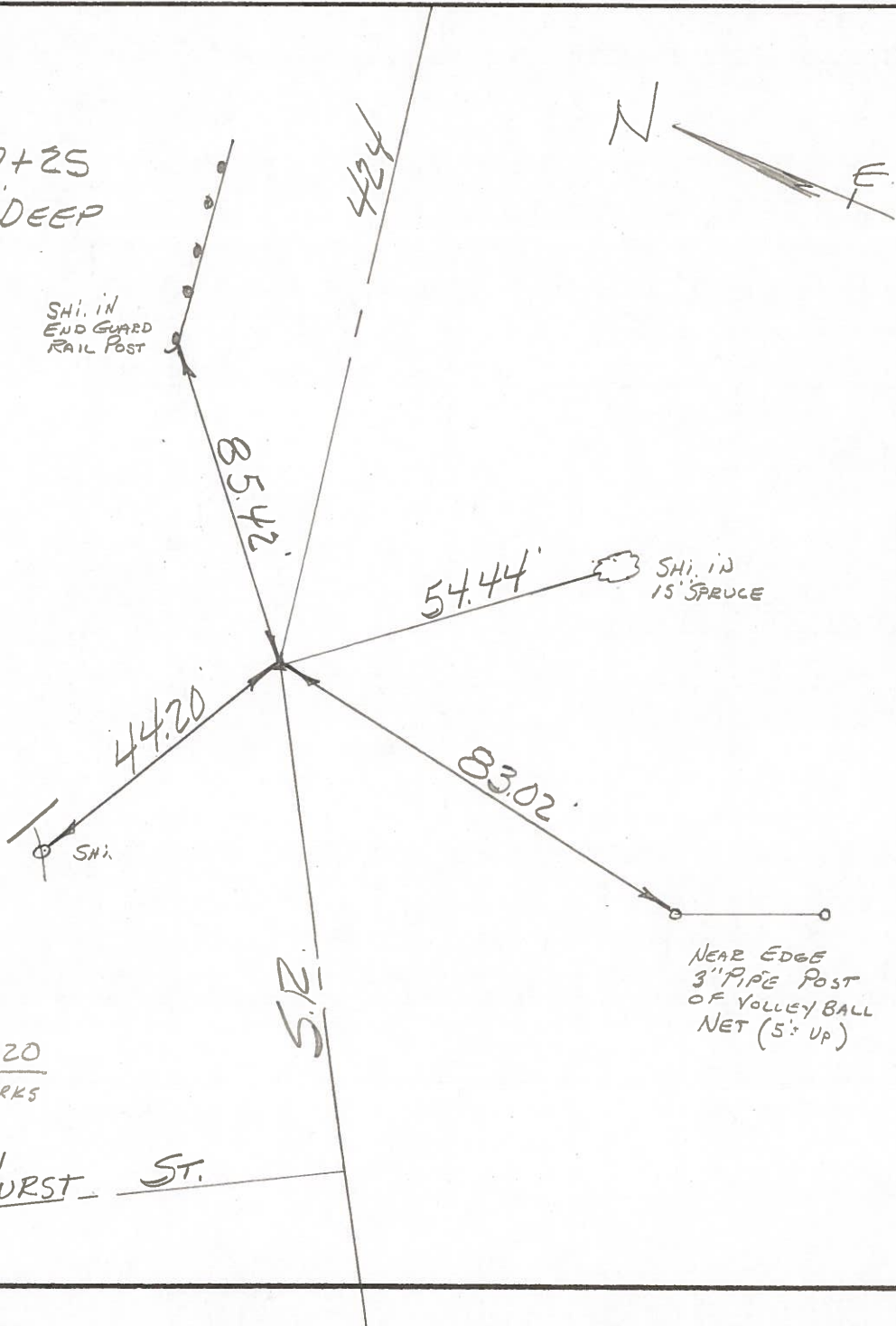
KNAPE

MEAD

(44)



P.I.
S.L.M. STA. 447+25
FD. R.R. SPK. 3" DEEP
E 8' LT. OF CTR.
PAVE.



RES² 1020
THE CLARKS

HURST ST.