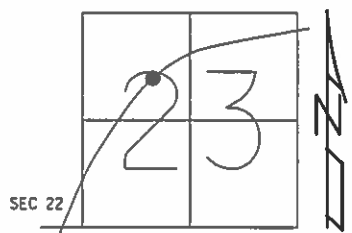


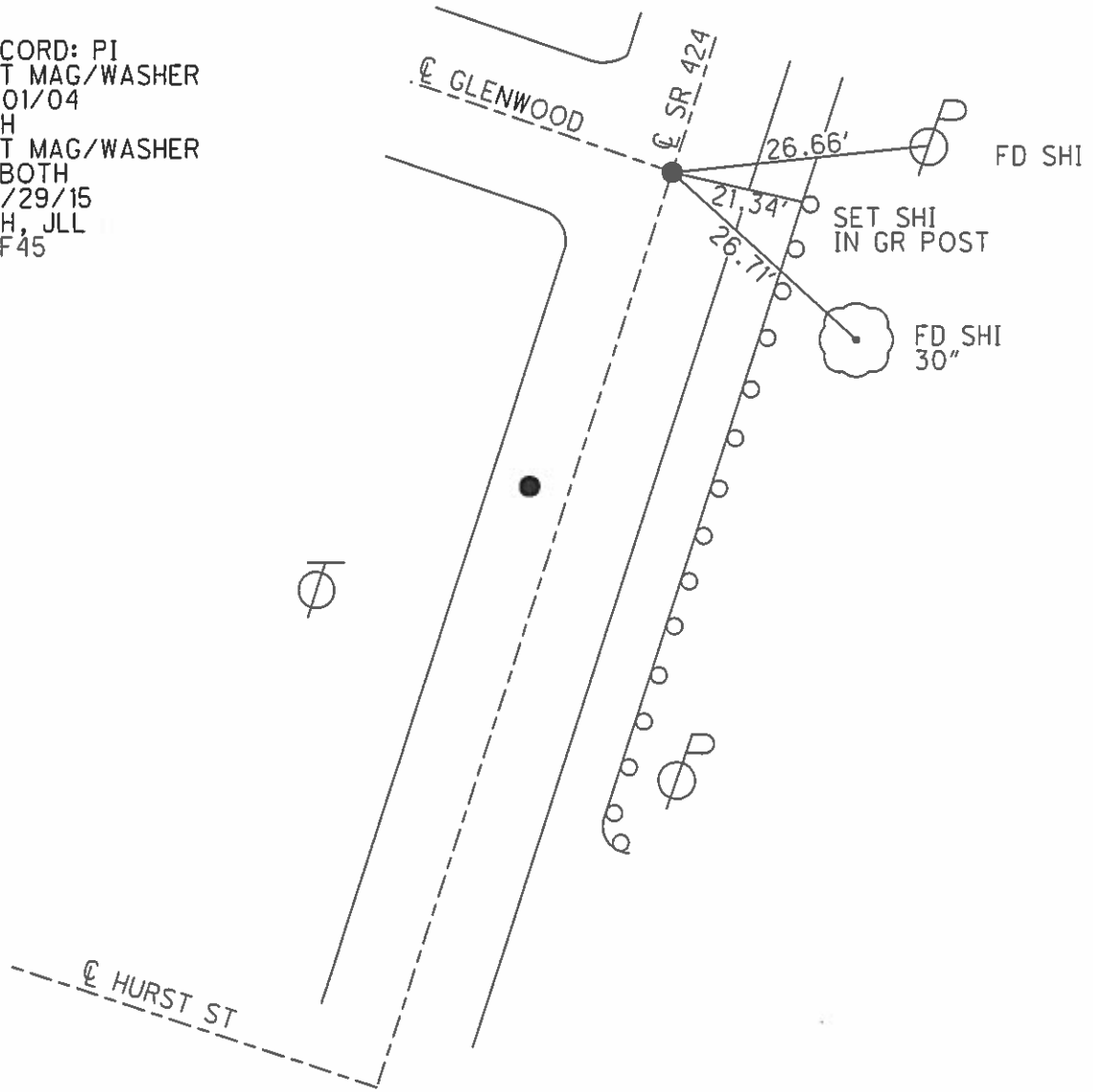
O.D.O.T. DISTRICT 2 SURVEY OFFICE (USE ONLY)

PERSONNEL \_\_\_\_\_ REFERENCE NO. 45 SHEET 10 OF 25  
 NOTES HOMAN DATE 07/07/14 ROUTE SR 424  
 H.C. LEU WEATHER CLOUDY COUNTY HENRY  
 R.C. THOMAS TEMP. 75° TOWNSHIP NAPOLEAN  
 SECTION 23  
 T 5 N R 6 E

TYPE MONUMENT \_\_\_\_\_ MAG/WASHER \_\_\_\_\_  
 ON SURFACE - ~~BELOW~~ \_\_\_\_\_ ON \_\_\_\_\_  
~~LEFT~~ - ☉ PAV'T - ~~RIGHT~~ \_\_\_\_\_ ON \_\_\_\_\_  
 \_\_\_\_\_ TO \_\_\_\_\_ EDGE PAVEMENT  
 S.L.M. \_\_\_\_\_  
 Grid: Northing: 629229.854 Easting: 1518144.591



RECORD: PI  
 SET MAG/WASHER  
 11/01/04  
 DCH  
 SET MAG/WASHER  
 @ BOTH  
 07/29/15  
 DCH, JLL  
 REF 45



# O.D.O.T. DISTRICT 2 SURVEY OFFICE

PERSONNEL \_\_\_\_\_ REFERENCE NO. \_\_\_\_\_ SHEET \_\_\_\_\_ OF \_\_\_\_\_

NOTES BAENHISEL

H.C. " "

R.C. HOFFMAN

DATE 9-21-90

WEATHER CLEAR

TEMP. +65°

ROUTE 424

COUNTY Henry

TOWNSHIP Napoleon

SECTION 23

T 5 N R 6 E

45

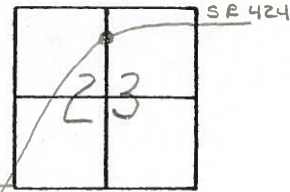
TYPE MONUMENT Sm RR Spk

ON SURFACE - BELOW yes

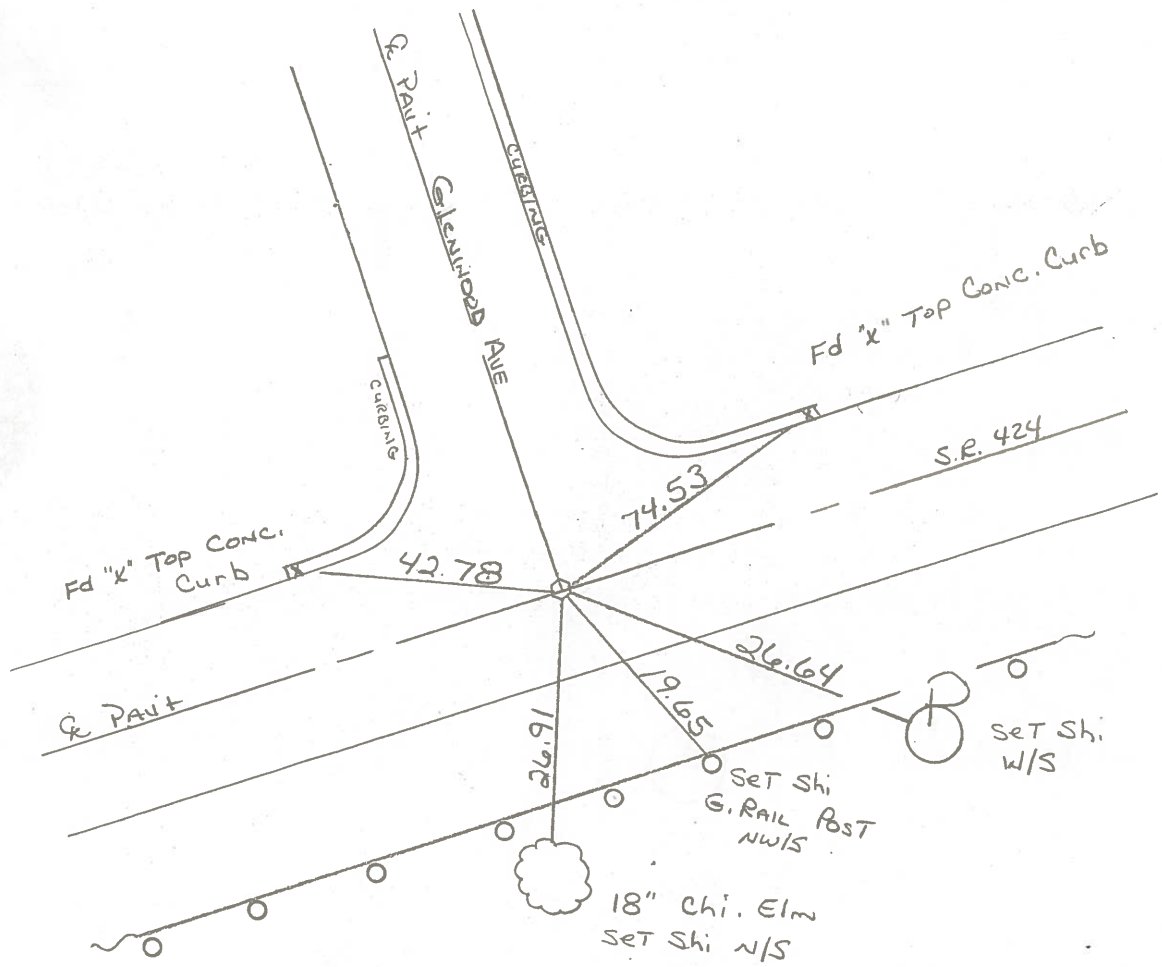
LEFT- & PAV'T. - RIGHT yes & Glenwood Ave.

12.2 TO RT EDGE PAVEMENT

S.L.M. 459+43



Set P.K. & Washer  
10-4-90  
MB



ODOT. DISTRICT 2 SURVEY OFFICE

Sht. 6 of 6

County HENRY S.R. 424

Date 7-26-79

Township NAPOLEON

Weather CLEAR

Section 13 ?

Temp. +80°

T5N, R6E

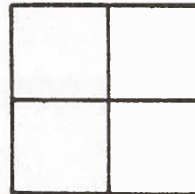
Personnel BURNSIDE

BOWERS

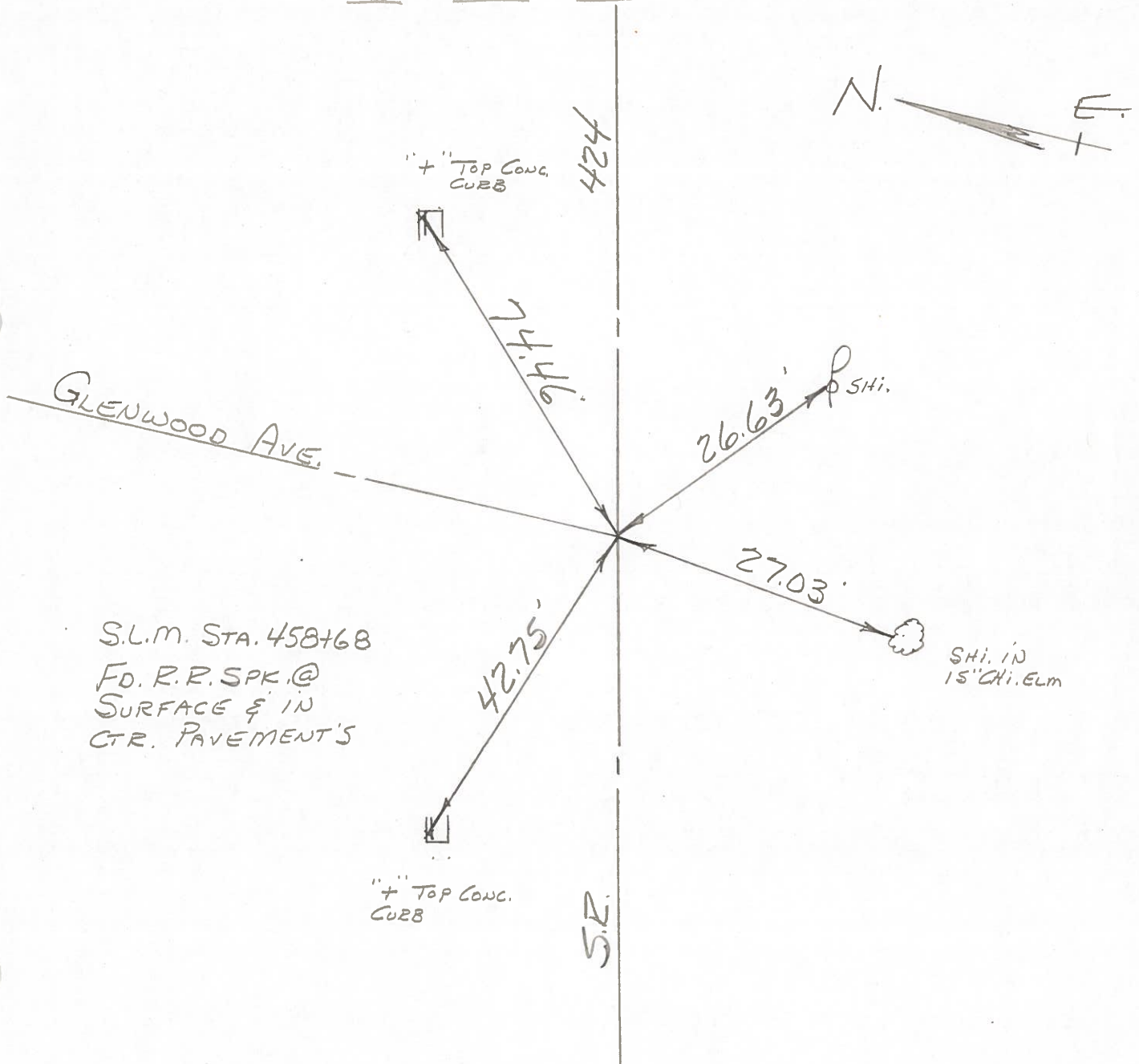
KNAPE

MEAD

#45



END POINT CHECK



PERSONNEL	TITLE	PERSONNEL	TITLE
Tomsic			
Vanyo			
Granata			

COUNTY HENRY DATE JUNE 26, 1970  
 S. R. 424 WEATHER \_\_\_\_\_  
 SEC. \_\_\_\_\_ TEMP. \_\_\_\_\_

DESCRIPTION \_\_\_\_\_ LEFT \_\_\_\_\_ CENTER LINE \_\_\_\_\_ RIGHT \_\_\_\_\_ JOB NO. \_\_\_\_\_

