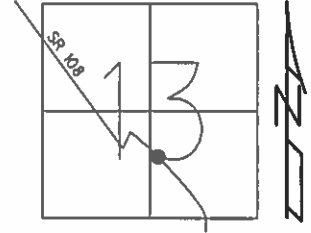


O.D.O.T. DISTRICT 2 SURVEY OFFICE (USE ONLY)

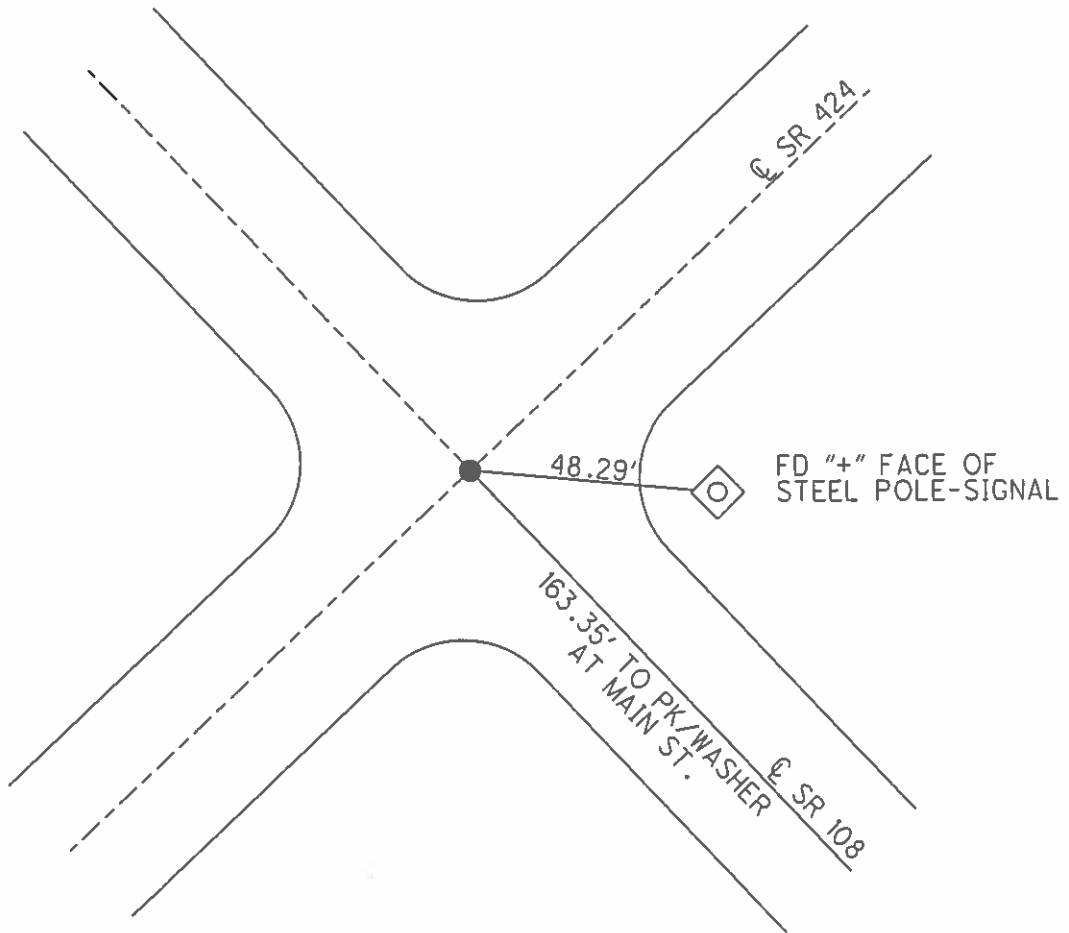
PERSONNEL \_\_\_\_\_ REFERENCE NO. 49 SHEET 11 OF 25  
 NOTES HOMAN DATE 07/07/14 ROUTE SR 424  
 H.C. LEU WEATHER CLOUDY COUNTY HENRY  
 R.C. THOMAS TEMP. 75° TOWNSHIP NAPOLEAN  
 \_\_\_\_\_ SECTION 13  
 \_\_\_\_\_ T 5 N R 6 E

TYPE MONUMENT \_\_\_\_\_ MON BOX \_\_\_\_\_  
 ON SURFACE - ~~BELOW~~ \_\_\_\_\_ ON \_\_\_\_\_  
~~LEFT~~ - ℄ PAV'T - ~~RIGHT~~ \_\_\_\_\_ ON \_\_\_\_\_  
 \_\_\_\_\_ TO \_\_\_\_\_ EDGE PAVEMENT  
 S.L.M. \_\_\_\_\_ 516+19 \_\_\_\_\_



Grid: Northing: 631920.951 Easting: 1522946.630

RECORD:  
 NEEDS TO BE  
 RESET FROM  
 RIVER BRIDGE  
 PLAN  
 GPS, REF 46  
 IRON PIN  
 IN MON BOX



O.D.O.T. DISTRICT 2 SURVEY OFFICE

PERSONNEL

REFERENCE NO. 49

SHEET 8 OF 29

NOTES BARNHISEL

H.C. CANTERBURY

R.C. HOOVER

DATE 9/03/04

WEATHER CLEAR

TEMP. +75°

ROUTE S.R. 424

COUNTY HENRY

TOWNSHIP NAPOLSON

SECTION 13

T 5 N R 6 E

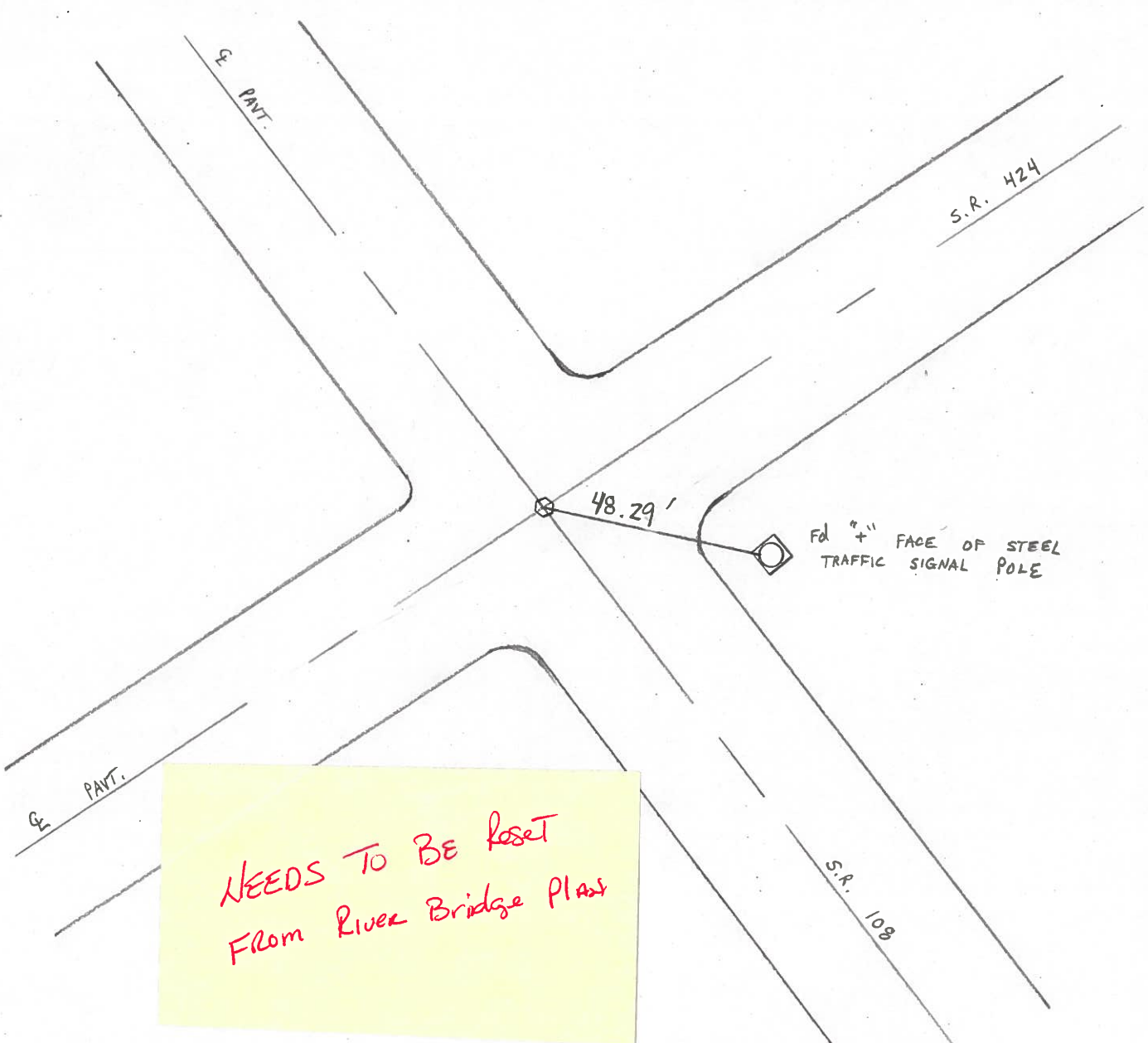
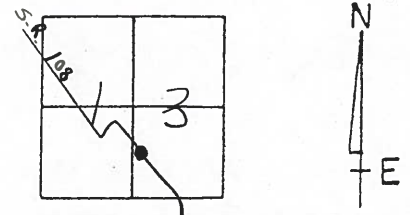
TYPE MONUMENT MAG NAIL

ON SURFACE - ~~BELOW~~ SURFACE

~~LEFT - & PAV'T. - RIGHT~~ & BOTH

~~TO~~ EDGE PAVEMENT

S.L.M. 516 +19



*NEEDS TO BE RESET  
FROM RIVER BRIDGE PLANS*

PERSONNEL	TITLE	PERSONNEL	TITLE	COUNTY	DATE
HOMAN	Ø			HEN	1-14-02
CORDES	T W			S.R. 108	WEATHER sun
				SEC. 15.61	TEMP 30°
DESCRIPTION ESTABLISH & R/M AND SUR. OF SR 108					JOB NO. 423290

