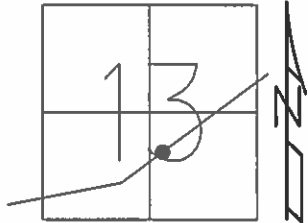


O.D.O.T. DISTRICT 2 SURVEY OFFICE (USE ONLY)

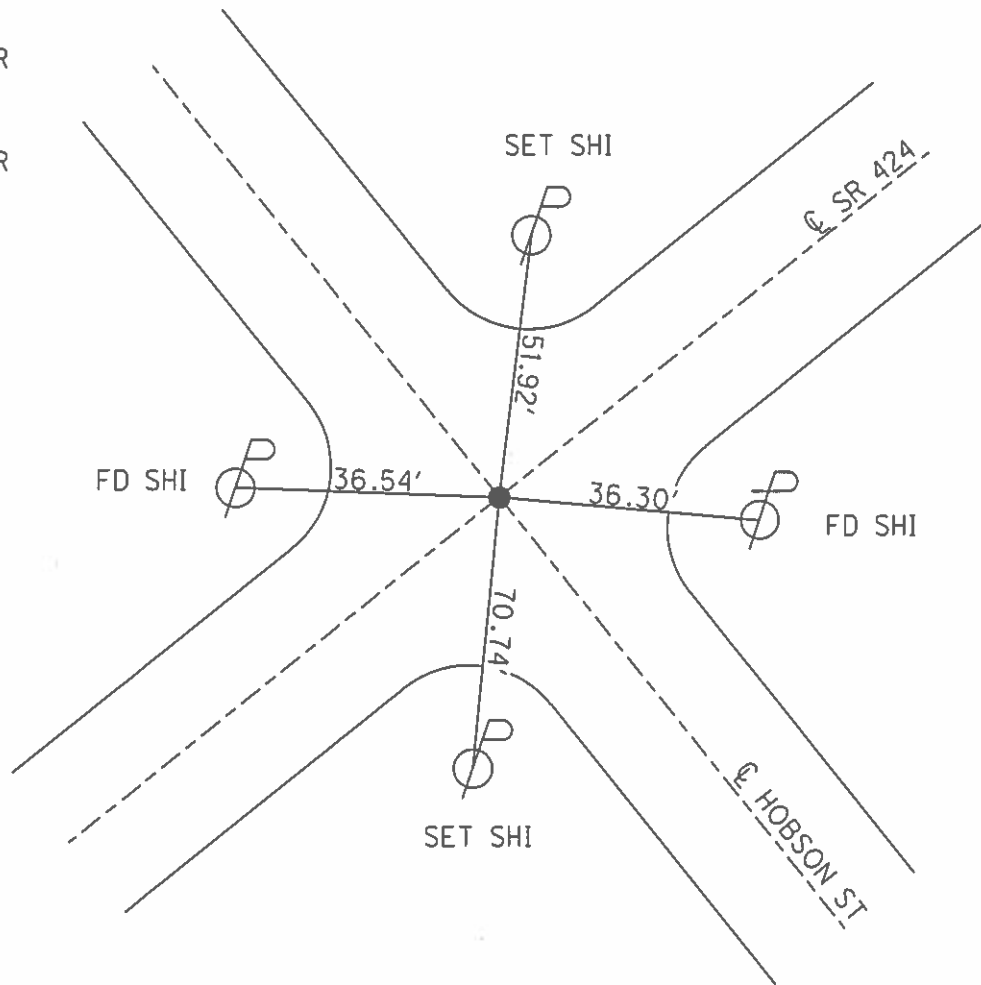
PERSONNEL \_\_\_\_\_ REFERENCE NO. 50 SHEET 12 OF 25  
 NOTES HOMAN DATE 07/07/14 ROUTE SR 424  
 H.C. LEU WEATHER CLOUDY COUNTY HENRY  
 R.C. THOMAS TEMP. 80° TOWNSHIP NAPOLEAN  
 \_\_\_\_\_ SECTION 13  
 \_\_\_\_\_ T 5 N R 6 E

TYPE MONUMENT \_\_\_\_\_ PK SHANK \_\_\_\_\_  
~~ON SURFACE~~ - BELOW \_\_\_\_\_ 3"  
~~LEFT~~ - ☉ PAV'T - ~~RIGHT~~ \_\_\_\_\_ ON \_\_\_\_\_  
 \_\_\_\_\_ TO \_\_\_\_\_ EDGE PAVEMENT  
 S.L.M. \_\_\_\_\_ 525+77



Grid: Northing: 632686.791 Easting: 1523536.132

RECORD:  
 SET MAG/WASHER  
 11/03/04  
 MB  
 REF 47  
 SET MAG/WASHER  
 07/29/15  
 DCH, JLL



# O.D.O.T. DISTRICT 2 SURVEY OFFICE

PERSONNEL

REFERENCE NO. 50

SHEET 9 OF 29

NOTES BARNHISEL

H.C. CANTERBURY

R.C. HOOVER

DATE 9/03/04

WEATHER CLEAR

TEMP. +75°

ROUTE S.R. 424

COUNTY HENRY

TOWNSHIP NAPOLEON

SECTION 13

T 5 N R 6 E

MC-DRAWING

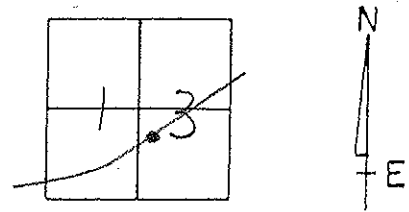
TYPE MONUMENT P.K. / WASHER

ON SURFACE - BELOW SURFACE

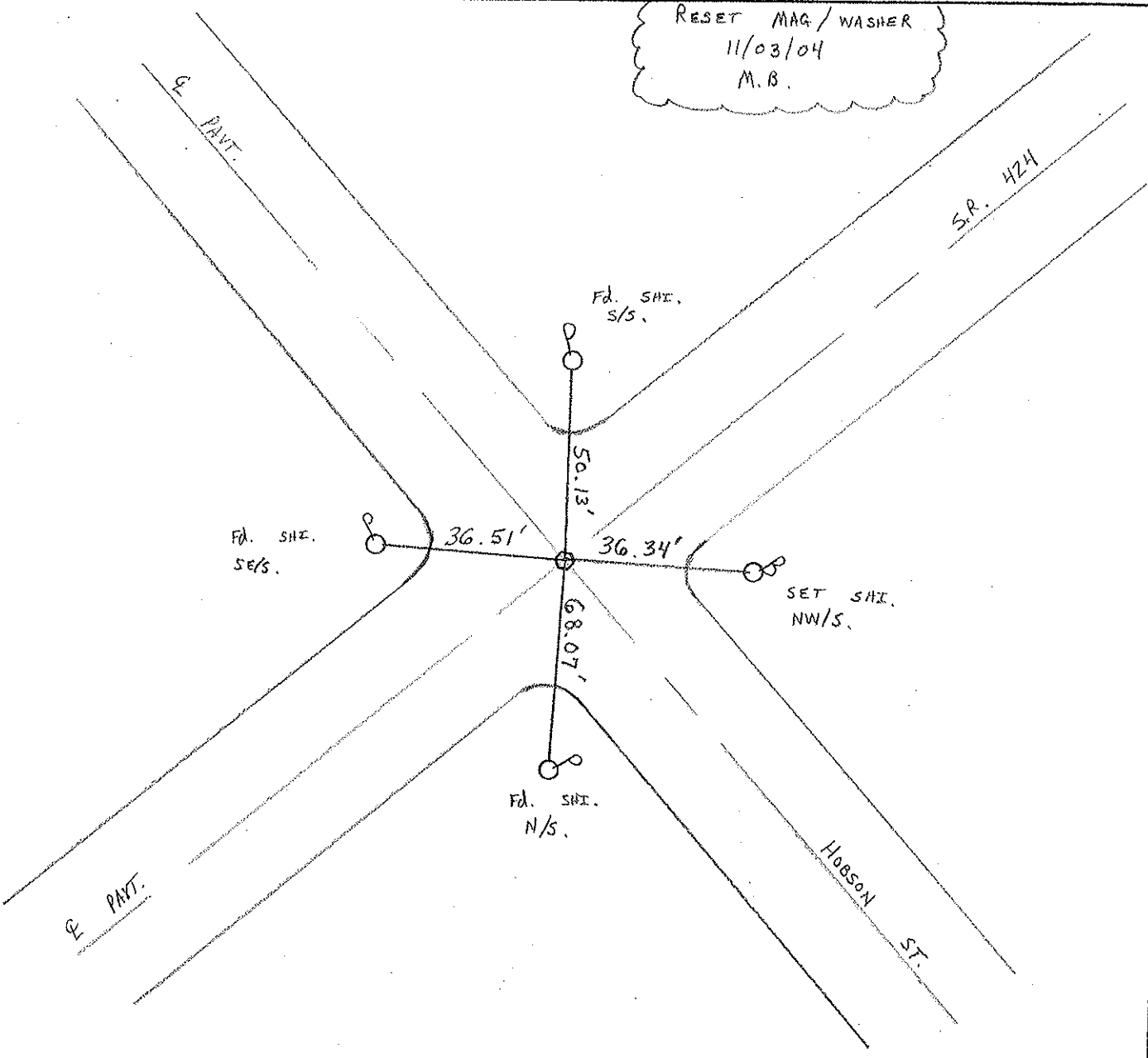
~~LEFT - & PAV'T. - RIGHT & PAVT~~

~~- JO - EDGE PAVEMENT~~

S.L.M. 525 + 77



RESET MAG/WASHER  
 11/03/04  
 M.B.



O.D.O.T. DISTRICT 2 SURVEY OFFICE

PERSONNEL

REFERENCE NO. 50

SHEET 1 OF 26

NOTES D. CURTIS

H.C. CANTERBURY

DATE 4-15-94

ROUTE S.R. 424

R.C. HERMILLER

WEATHER WINDY

COUNTY HENRY

VOGEL

TEMP. +68

TOWNSHIP NAPOLEON

LOEHRKE

SECTION 13

T 5 N R 6 E

TYPE MONUMENT RESET P.K. NAIL/WASHER

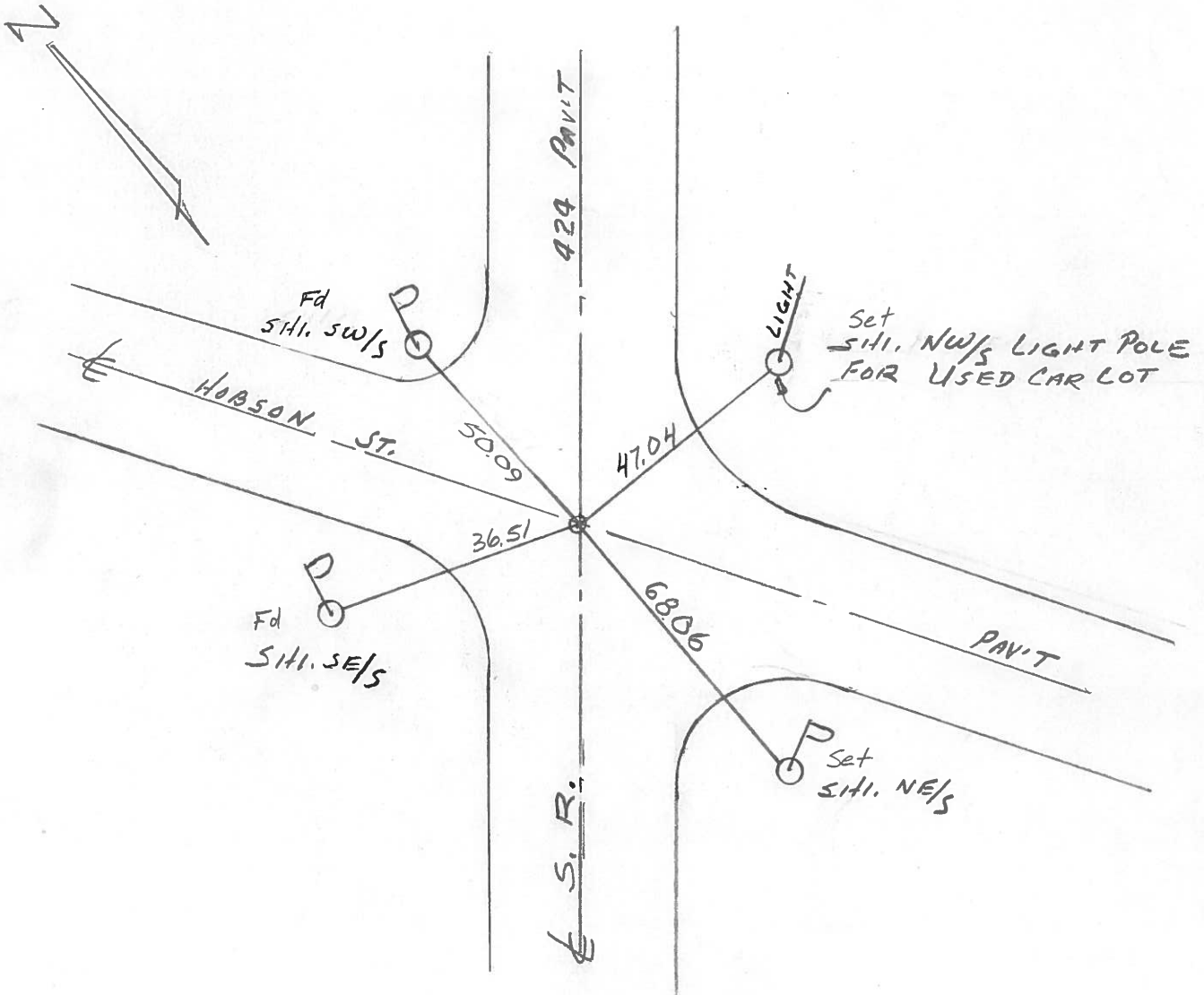
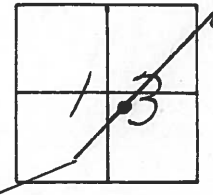
B-2-94  
C.L.

ON SURFACE - BELOW ON SURFACE

LEFT- ☉ PAV'T. - RIGHT ☉ PAV'T

TO EDGE PAVEMENT

S.L.M. 525+73



Resurfaced 1994

O.D.O.T. DISTRICT 2 SURVEY OFFICE

SHEET 1 OF

County Henry S.R. 424

Date 7 July 82

Township Napoleon

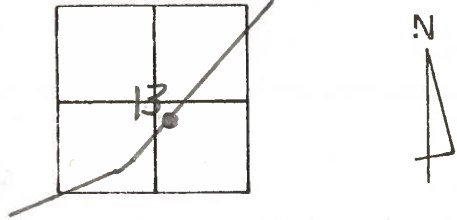
Weather W 50 m

Section 13

Temp. 75°

T N, R E

Personnel I. Stone  
R. Michalek  
P. Newson  
D. Curtis



REF. No. 50

