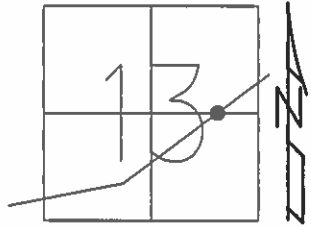


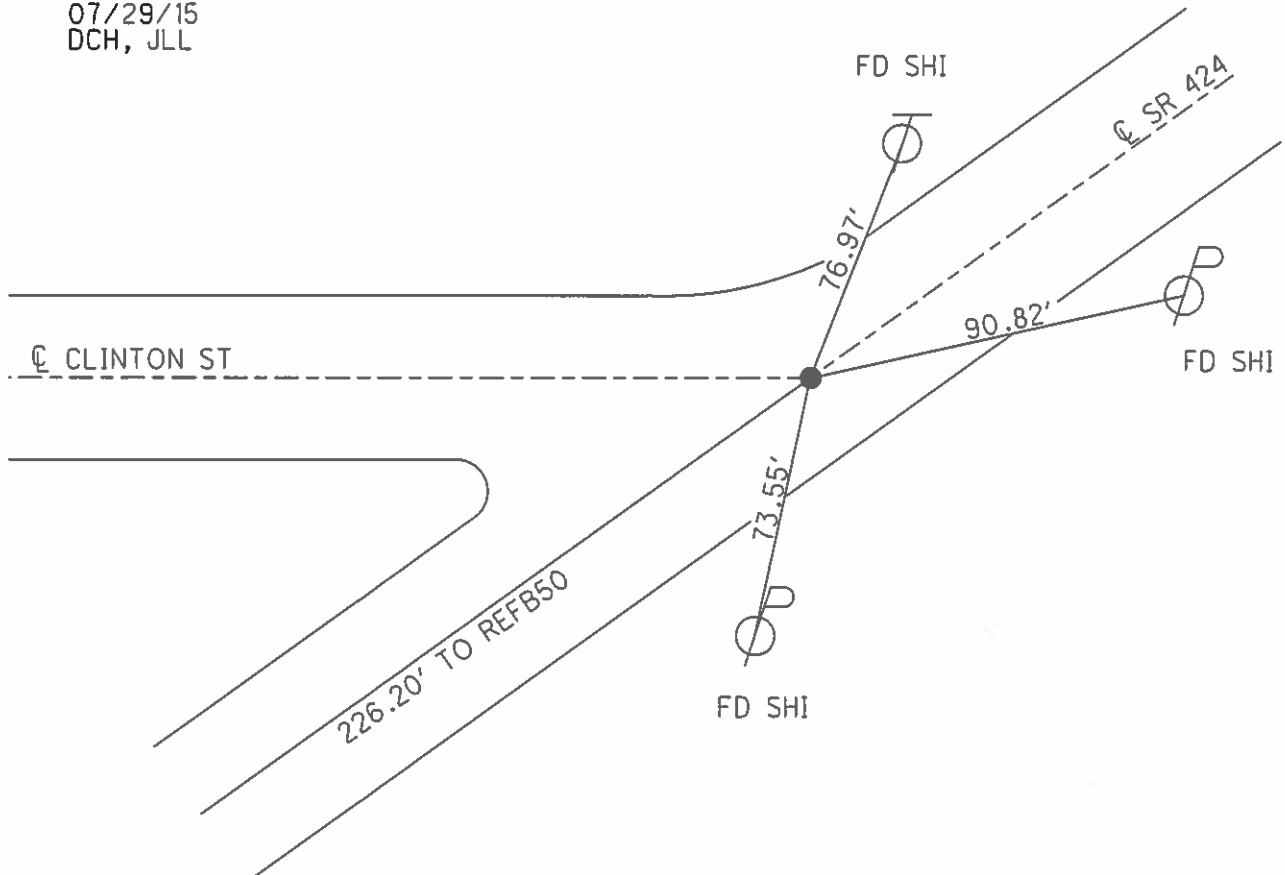
O.D.O.T. DISTRICT 2 SURVEY OFFICE (USE ONLY)

PERSONNEL _____ REFERENCE NO. 50 C SHEET 15 OF 25
 NOTES HOMAN DATE 07/10/14 ROUTE SR 424
 H.C. LEU WEATHER CLEAR COUNTY HENRY
 R.C. MEYER TEMP. 75° TOWNSHIP NAPOLEAN
 SECTION 13
 T 5 N R 6 E

TYPE MONUMENT MAG/WASHER
 ON SURFACE - ~~BELOW~~ ON
~~LEFT - C~~ PAV'T - ~~RIGHT~~ ON
20.8 TO RT EDGE PAVEMENT
 S.L.M. 537+42
 Grid: Northing: 633630.236 Easting: 1524265.745



RECORD:
 SET MAG/WASHER
 11/03/04
 MB
 REFC50
 SET MAG/W
 07/29/15
 DCH, JLL



O.D.O.T. DISTRICT 2 SURVEY OFFICE

PERSONNEL

REFERENCE NO. 50-C

SHEET 12 OF 29

NOTES BARNHISEL

H.C. CANTERBURY

R.C. HOOVER

MR - DRAWING

DATE 9/03/04

WEATHER CLEAR

TEMP. +75°

ROUTE S.R. 424

COUNTY HENRY

TOWNSHIP NAPOLÉON

SECTION 13

T 5 N R 6 E

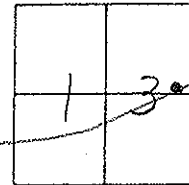
TYPE MONUMENT P.K. / WASHER

ON SURFACE - BELOW SURFACE

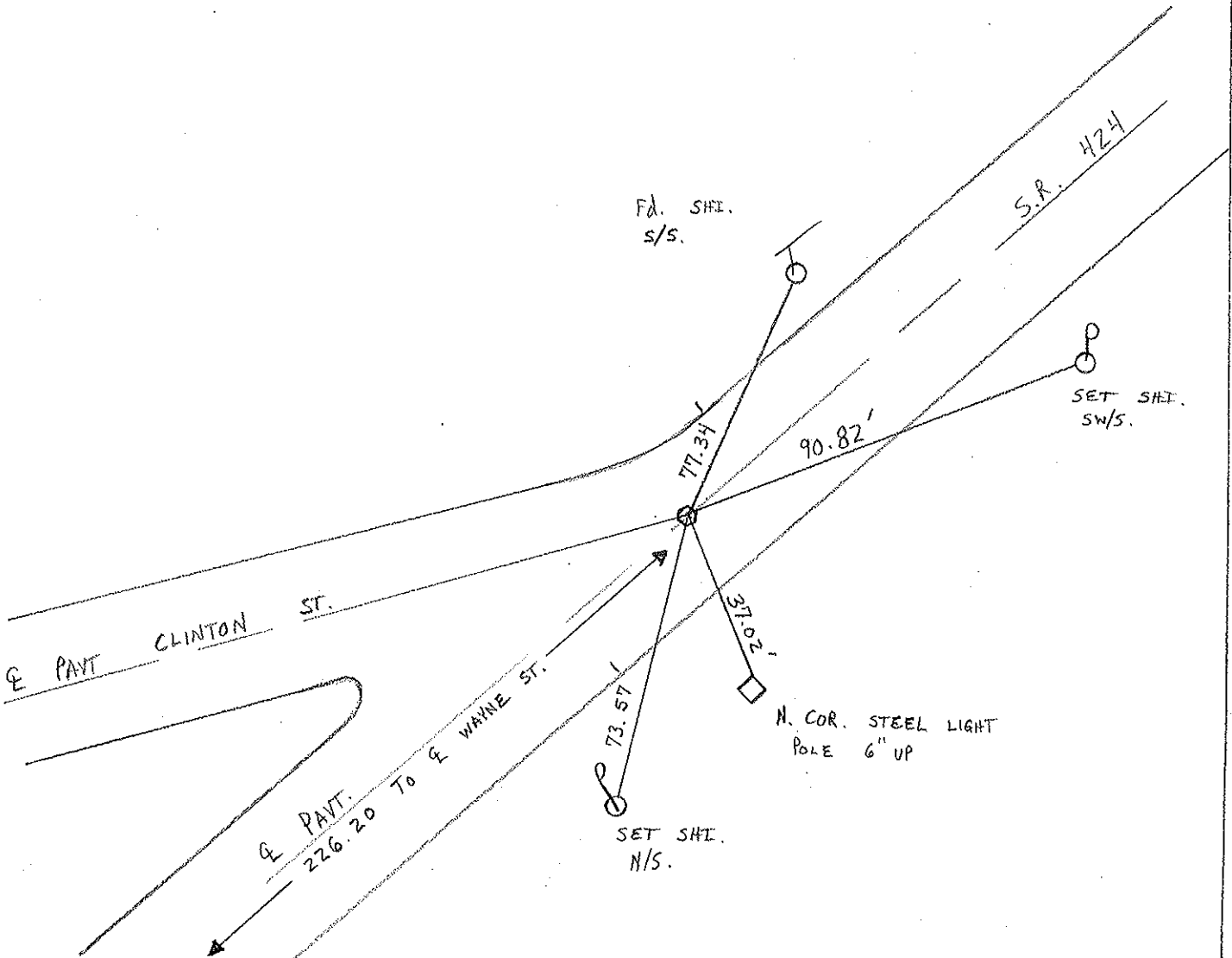
LEFT - Q PAV'T. - RIGHT Q BOTH

20.8 TO RT. EDGE PAVEMENT

S.L.M. 537+42



RESET MAR/WASHER
 11/03/04
 M.B.



O.D.O.T. DISTRICT 2 SURVEY OFFICE

PERSONNEL

REFERENCE NO. 50-C SHEET 4 OF 26

NOTES D. CURTIS

H.C. CANTERBURY

DATE 4-18-94

ROUTE S.R. 424

R.G. HERMILLER

WEATHER RAIN

COUNTY HENRY

VOGEL

TEMP. +65

TOWNSHIP NAPOLEON

CORDES

SECTION 13

T 5 N R 6 E

Set P.K./WASHER
B-2-94

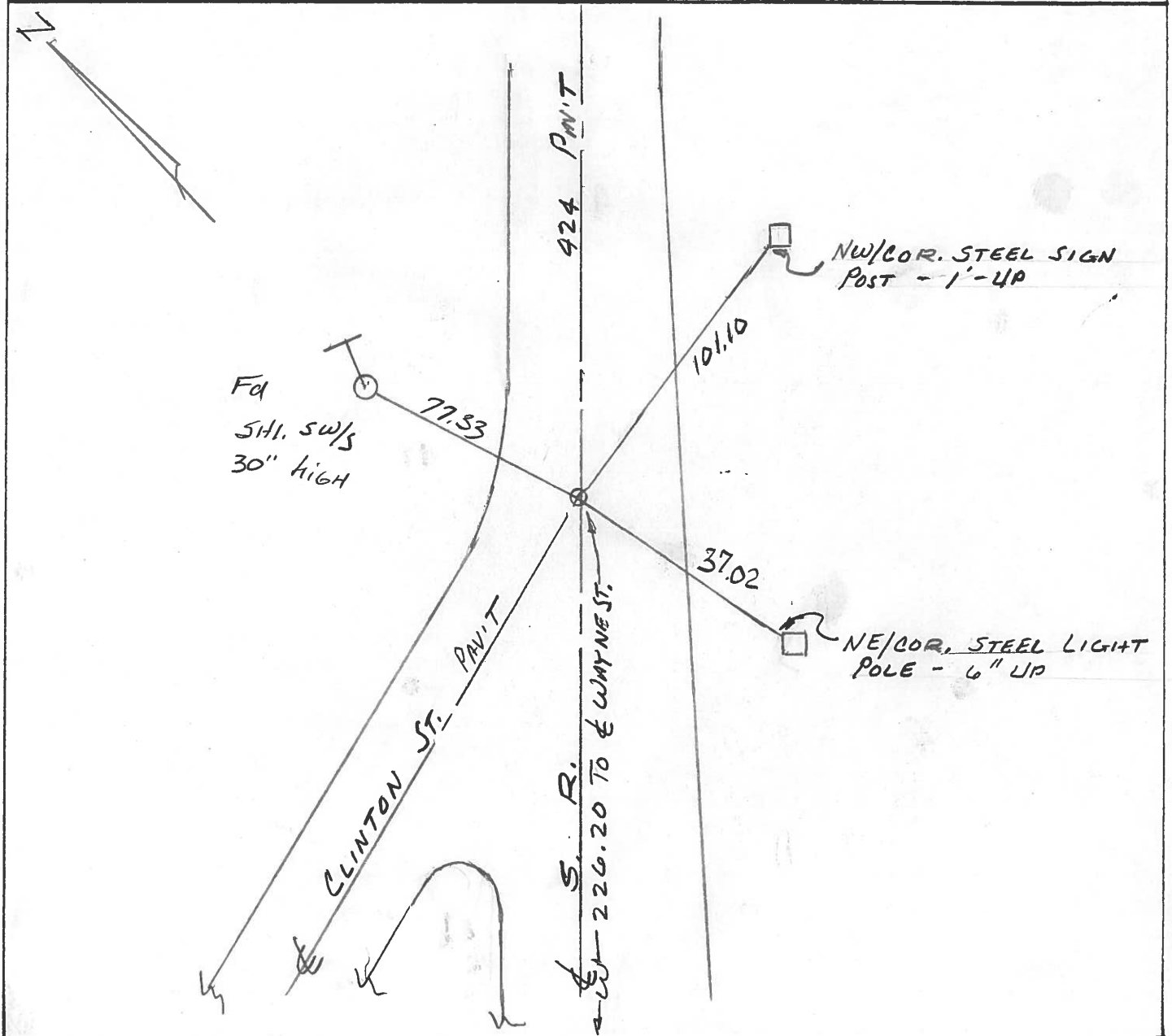
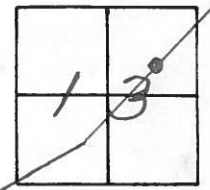
TYPE MONUMENT S.M. R. R. SPK.

ON SURFACE - ~~BELOW~~ ON SURFACE

LEFT- ☉ PAV'T. - RIGHT ☉ PAV'T

20.8 TO RT EDGE PAVEMENT

S.L.M. 544+00



County Henry S.R. 424

Date 7 July 02

Township Napoleon

Weather W.com

Section 13

Temp. 80°

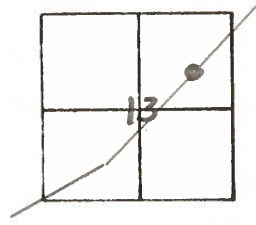
T N, R E

Personnel I. Stone

P. Newsen

R. Michalak

D. Curtis



REF. NO. 50-C

