



# O.D.O.T. DISTRICT 2 SURVEY OFFICE

PERSONNEL

REFERENCE NO. 51

SHEET 13 OF 29

NOTES BARNHISEL

H.C. CANTERBURY

R.C. HOOVER

DATE 9/03/04

WEATHER CLEAR

TEMP. +75°

ROUTE S.R. 424

COUNTY HENRY

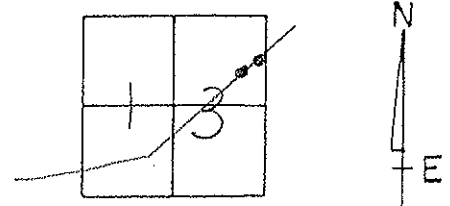
TOWNSHIP NAPOLEON

SECTION 13

T 5 N R 6 E

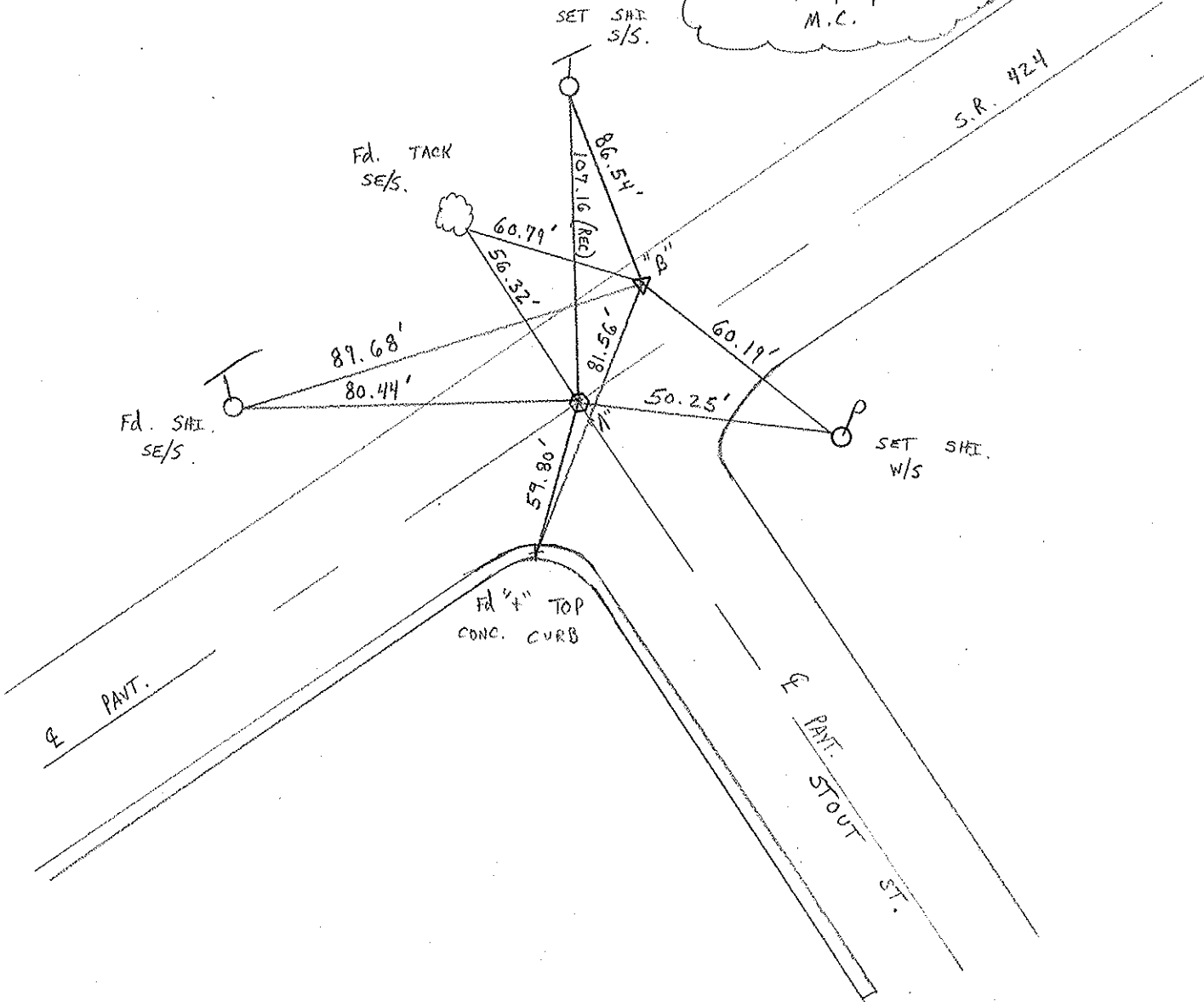
MC-DRAWING

	PT "A"	PT "B"
TYPE MONUMENT	P.K. / WASHER	P.K. / WASHER
ON SURFACE - BELOW	SURFACE	SURFACE
LEFT- & PAV'T. - RIGHT	ON & BOTH	8.1' LT &
	11.7' TO LT EDGE PAVEMENT	3.7' TO RT E.O.P.
S.L.M.	539+99	540+21



DIST. BETWEEN A+B = 21.86

RESET MAGS/WASHERS  
 11/03/04  
 M.C.



# O.D.O.T. DISTRICT 2 SURVEY OFFICE

PERSONNEL

REFERENCE NO. 51

SHEET 5 OF 26

NOTES J. CURTIS

H.C. CANTERBURY

DATE 4-18-94

ROUTE S.R. 424

R.C. HERMILLER

WEATHER RAIN

COUNTY HENRY

VOGEL

TEMP. +60

TOWNSHIP NAPOLEON

CORDER

SECTION 13

Set P.K. / WASHERS  
8-2-94  
C.L.

T 5 N R 6 E

TYPE MONUMENT Ⓐ = Lg R.R. SPK.

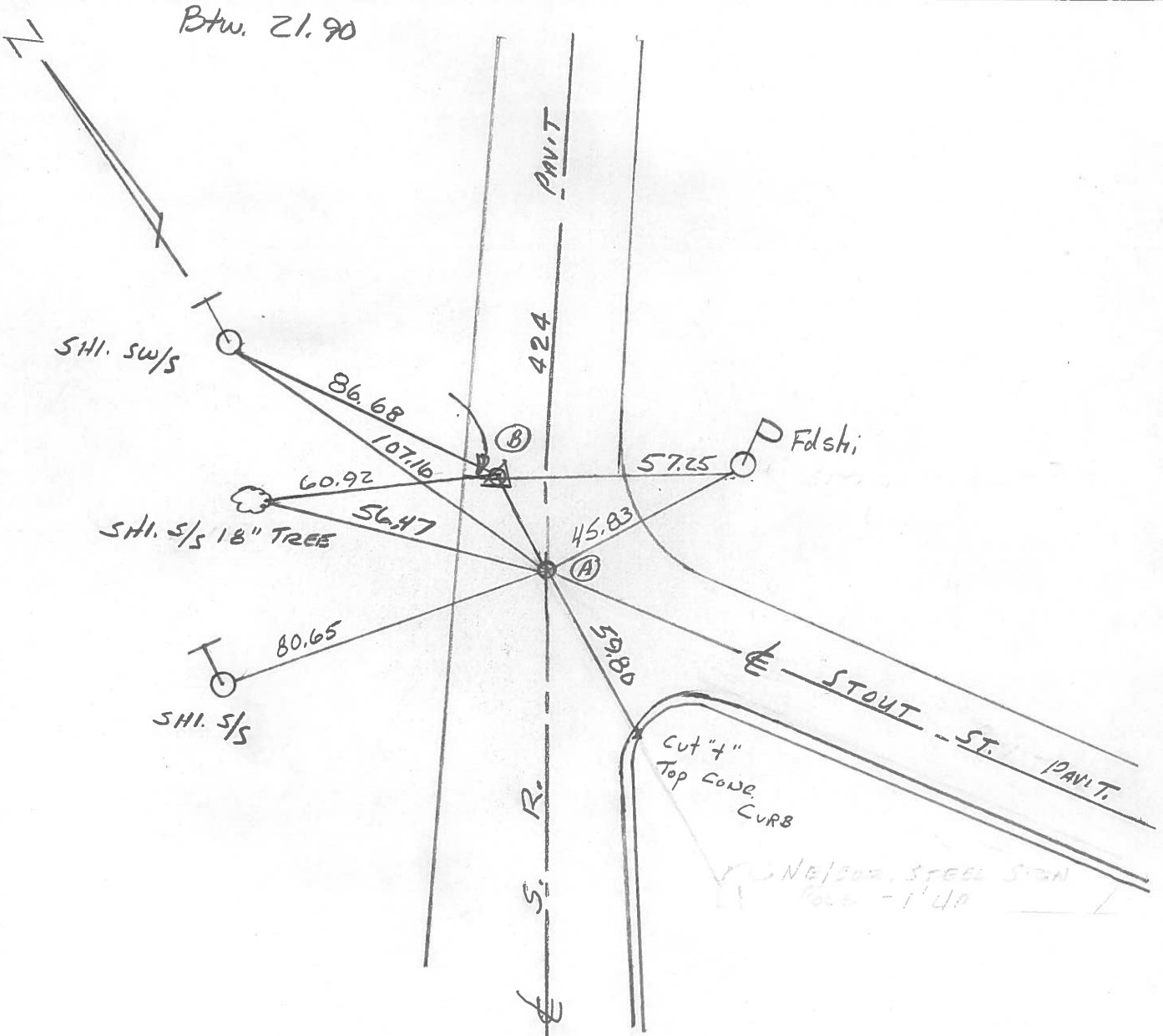
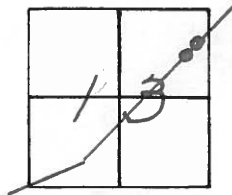
ON SURFACE - BELOW Ⓑ = Lg R.R. SPK.

LEFT - & PAV'T. - RIGHT Ⓒ = 3" BELOW

Ⓓ = 7.8' LT.

Ⓑ = TO LT. EDGE PAVEMENT

S.L.M. Ⓐ = 546 + 25 Ⓑ = 546 + 47



County Henry S.R. 424

Date 7 July 82

Township Napoleon

Weather Warm

Section 13

Temp. 81°

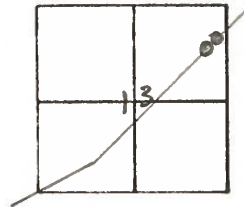
T N, R E

Personnel J. Stone

P. Neuser

R. Michalek

D. Coates



REF. NO. 51

