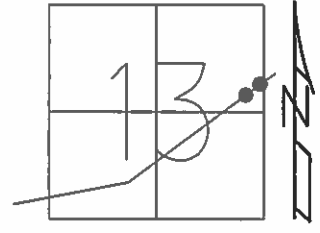


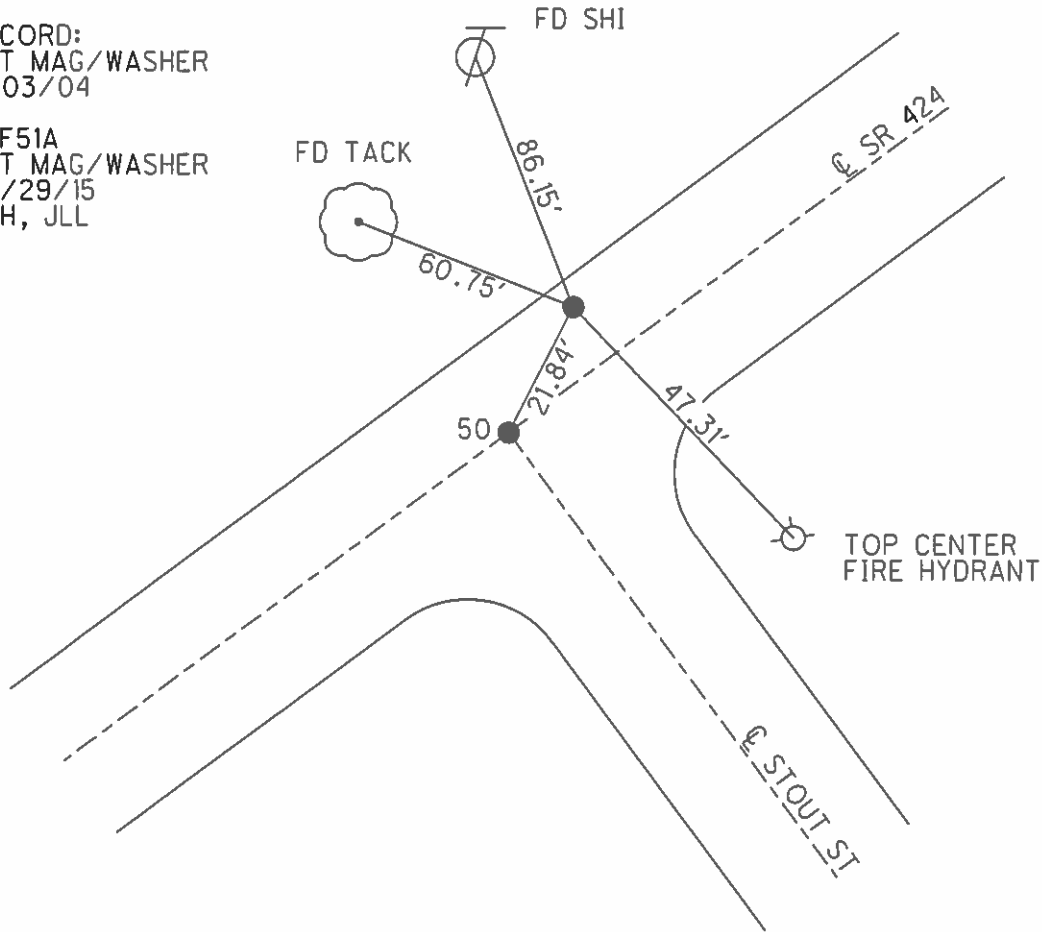
O.D.O.T. DISTRICT 2 SURVEY OFFICE (USE ONLY)

PERSONNEL _____ REFERENCE NO. 51 A SHEET 17 OF 25
 NOTES HOMAN DATE 07/10/14 ROUTE SR 424
 H.C. LEU WEATHER CLEAR COUNTY HENRY
 R.C. MEYER TEMP. 75° TOWNSHIP NAPOLEAN
 _____ SECTION 13
 _____ T 5 N R 6 E

TYPE MONUMENT _____ PK/WASHER _____
 ON SURFACE - ~~BELOW~~ _____ ON _____
 LEFT - ~~C PAV'T~~ - ~~RIGHT~~ _____ 8.1' _____
 _____ 3.7' TO LT EDGE PAVEMENT
 S.L.M. _____ 540+21
 Grid: Northing: 633826.782 Easting: 1524415.770



RECORD:
 SET MAG/WASHER
 11/03/04
 MC
 REF51A
 SET MAG/WASHER
 07/29/15
 DCH, JLL



O.D.O.T. DISTRICT 2 SURVEY OFFICE

PERSONNEL

REFERENCE NO. 51

SHEET 13 OF 29

NOTES BARNHISEL

H.C. CANTERBURY

R.C. HOOKE

DATE 9/03/04

WEATHER CLEAR

TEMP. +75°

ROUTE S.R. 424

COUNTY HENRY

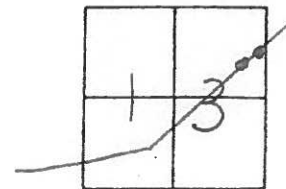
TOWNSHIP NAPOLEON

SECTION 13

T 5 N R 6 E

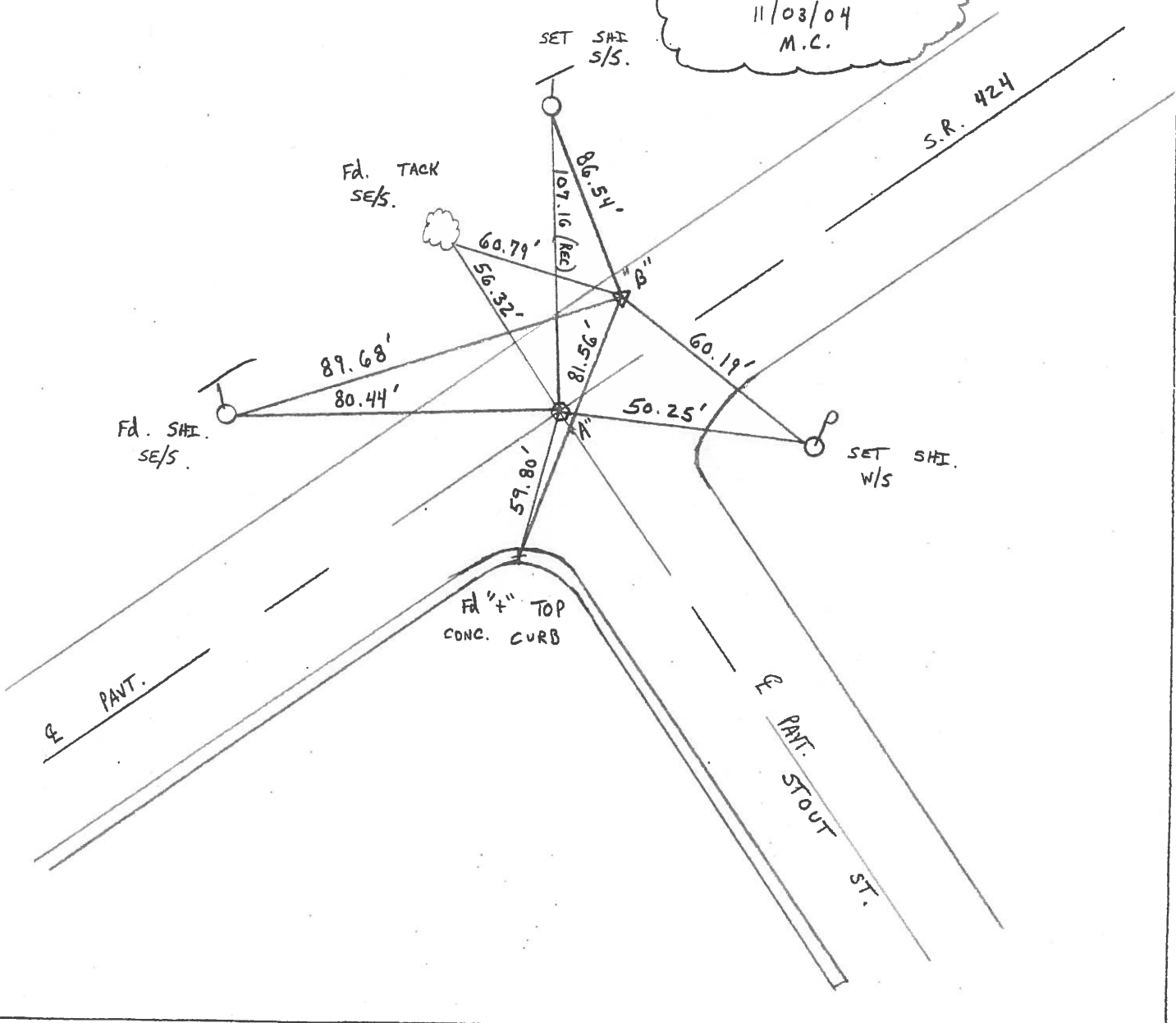
MC-DRAWING

	PT "A"	PT "B"
TYPE MONUMENT	P.K. / WASHER	P.K. / WASHER
ON SURFACE - BELOW	SURFACE	SURFACE
LEFT- & PAV'T. - RIGHT	ON & BOTH	8.1' LT &
11.7' TO LT EDGE PAVEMENT		3.7' TO LT E.O.P.
S.L.M.	539+99	540+21



DIST. BETWEEN A+B = 21.86

RESET MAGS/WASHERS
 11/03/04
 M.C.



O.D.O.T. DISTRICT 2 SURVEY OFFICE

PERSONNEL

REFERENCE NO. 51

SHEET 5 OF 26

NOTES D. CURTIS

H.C. CANTERBURY

DATE 4-18-94

ROUTE S.R. 424

R.C. HERMILLER

WEATHER RAIN

COUNTY HENRY

VOGEL

TEMP. 760

TOWNSHIP NAPOLEON

CORNER

SECTION 13

Set P.K. / WASHERS
8-2-94
C.L.

T 5 N R 6 E

TYPE MONUMENT Ⓐ = Lg R.R. SPK.

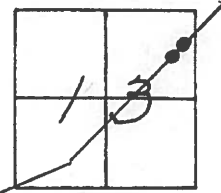
ON SURFACE - BELOW Ⓑ = Lg R.R. SPK.

LEFT - & PAV'T. - RIGHT Ⓒ = 3" BELOW

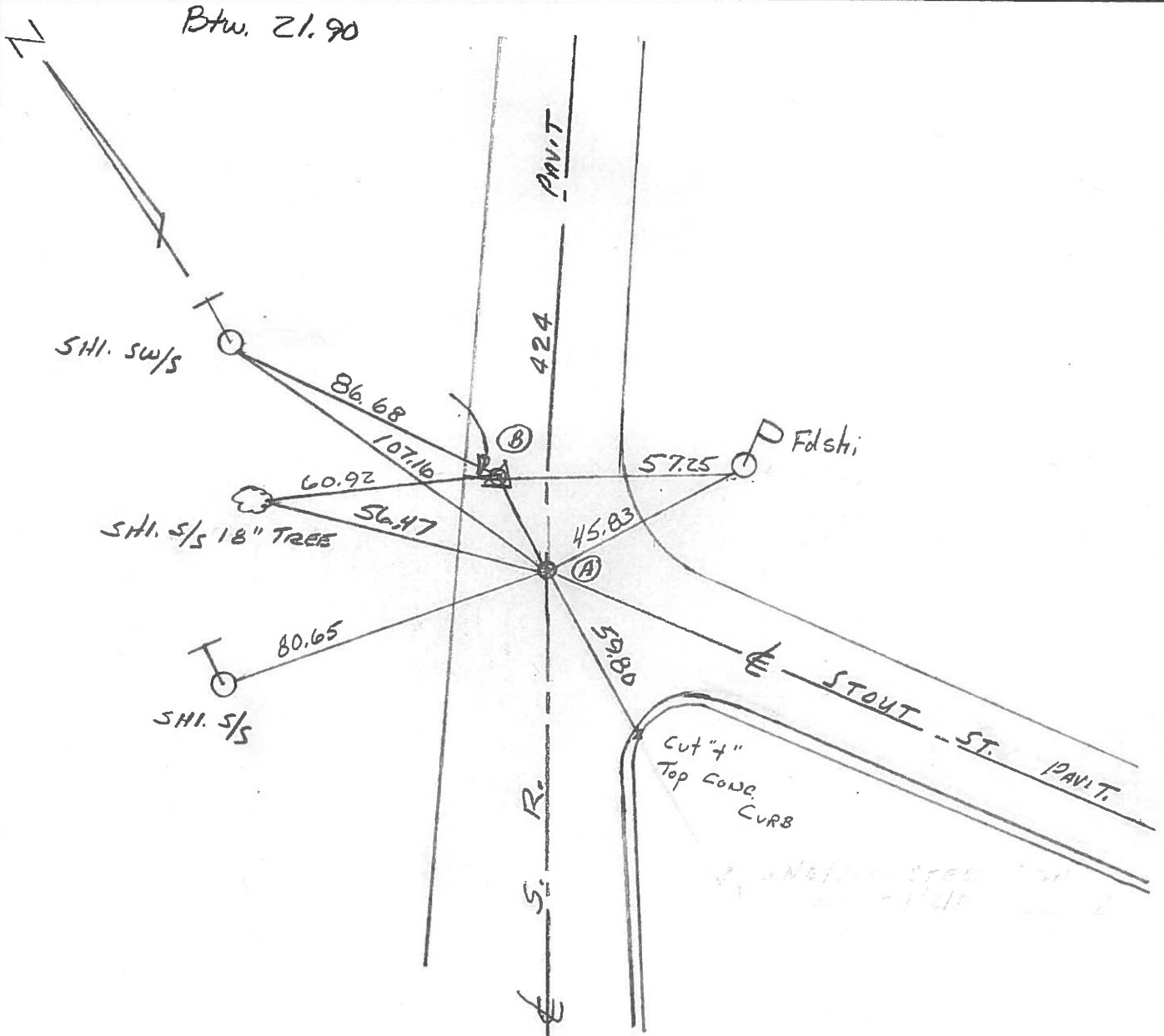
Ⓓ = 7.8' LT.

Ⓔ = TO LT. EDGE PAVEMENT

S.L.M. Ⓐ = 546 + 25 Ⓑ = 546 + 47



Btw. 21.90



County Henry S.R. 424

Date 7 July 82

Township Napoleon

Weather Warm

Section 13

Temp. 81°

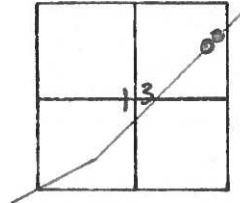
T N, R E

Personnel I. Stone

P. Newser

R. Michalak

D. Coates



REF. NO. 51

