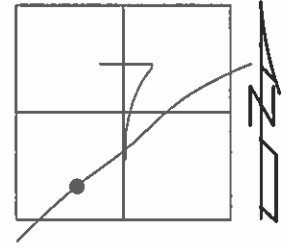


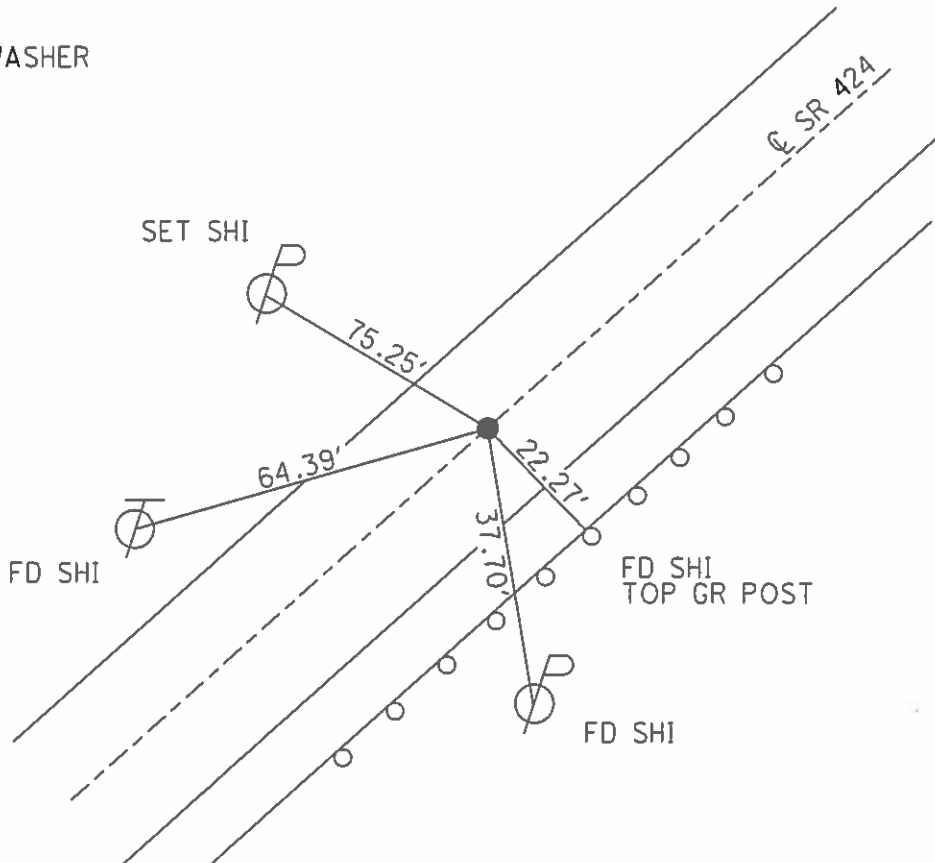
O.D.O.T. DISTRICT 2 SURVEY OFFICE (USE ONLY)

PERSONNEL _____ REFERENCE NO. 52 A SHEET 19 OF 25
 NOTES HOMAN DATE 07/10/14 ROUTE SR 424
 H.C. LEU WEATHER CLEAR COUNTY HENRY
 R.C. HOMAN TEMP. +80° TOWNSHIP LIBERTY
 _____ SECTION 7
 _____ T 5 N R 7 E

TYPE MONUMENT _____ MAG _____
 ON SURFACE - ~~BELOW~~ _____ ON _____
~~LEFT~~ - Q PAV'T - ~~RIGHT~~ _____ ON _____
11.4' TO LT EDGE PAVEMENT
 S.L.M. _____ 584+75
 Grid: Northing: 637080.999 Easting: 1527453.783



RECORD:
 SET MAG/WASHER
 11/03/04
 MB
 REFA52
 SET PK/WASHER
 10/27/15
 DCH, JLL



O.D.O.T. DISTRICT 2 SURVEY OFFICE

PERSONNEL

REFERENCE NO. 52-A

SHEET 15 OF 29

NOTES BARNHISEL

H.C. CANTERBURY

R.C. HOOKER

DATE 9/03/04

WEATHER CLOUDY

TEMP. + 80°

ROUTE S.R. 424

COUNTY HENRY

TOWNSHIP LIBERTY

SECTION 7

T 5 N R 7 E

MC-DRAWING

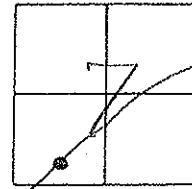
TYPE MONUMENT P.K. / WASHER

ON SURFACE - BELOW SURFACE

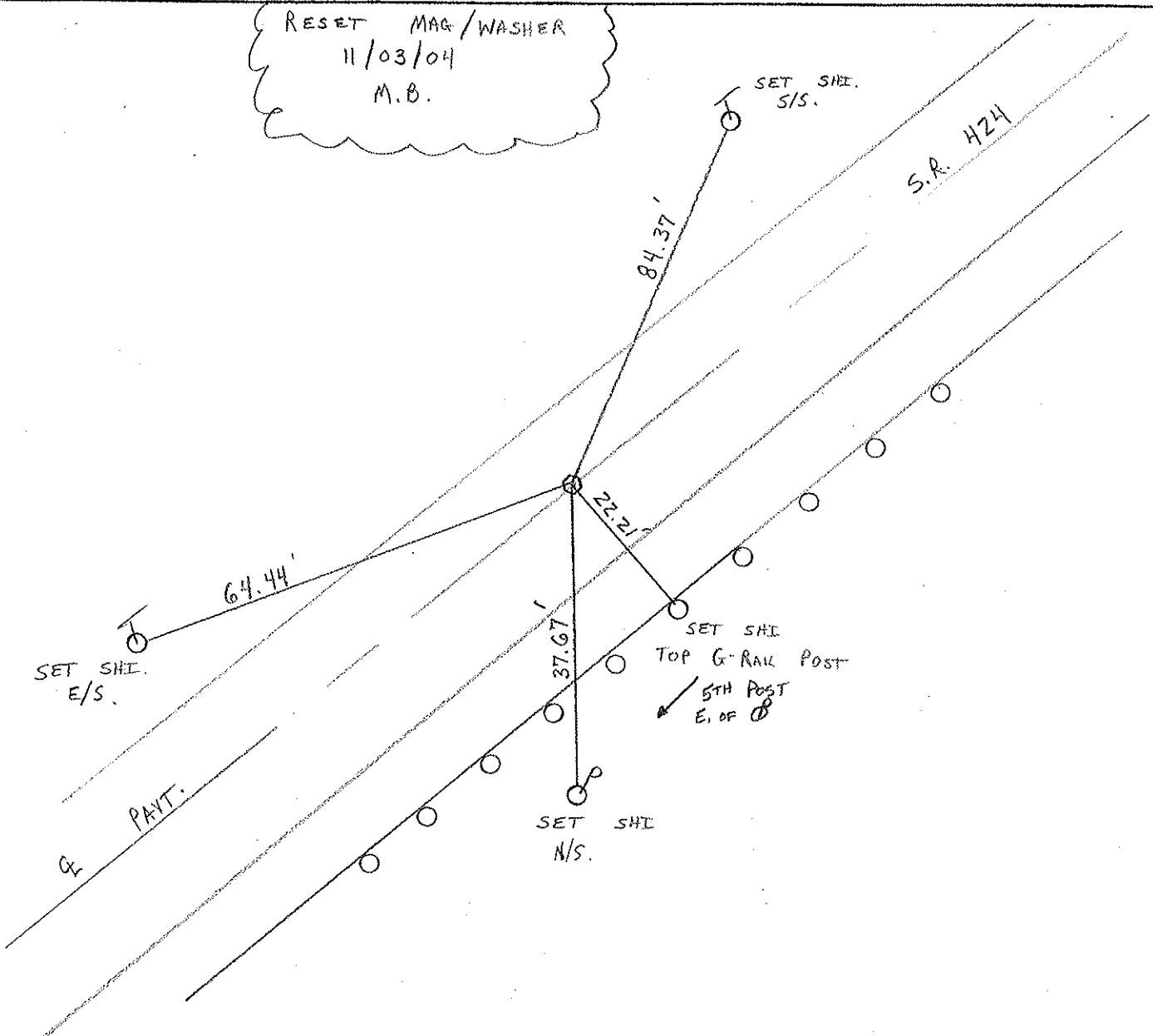
~~LEFT - & PAV'T. - RIGHT~~ ON &

11.4' TO LT. EDGE PAVEMENT

S.L.M. 584 + 75



RESET MAG/WASHER
 11/03/04
 M.B.



O.D.O.T. DISTRICT 2 SURVEY OFFICE

PERSONNEL

REFERENCE NO. 52-A SHEET 7 OF 26

NOTES J. CURTIS

H.C. CANTERBURY

DATE 4-18-94

ROUTE S.R. 424

R.C. HEMILLER

WEATHER RAIN

COUNTY HENRY

CORDES

TEMP. +65

TOWNSHIP LIBERTY

VOGEL

SECTION 7

Set P.K. / WASHER
8-2-94
C.L.

T 5 N R 7 E

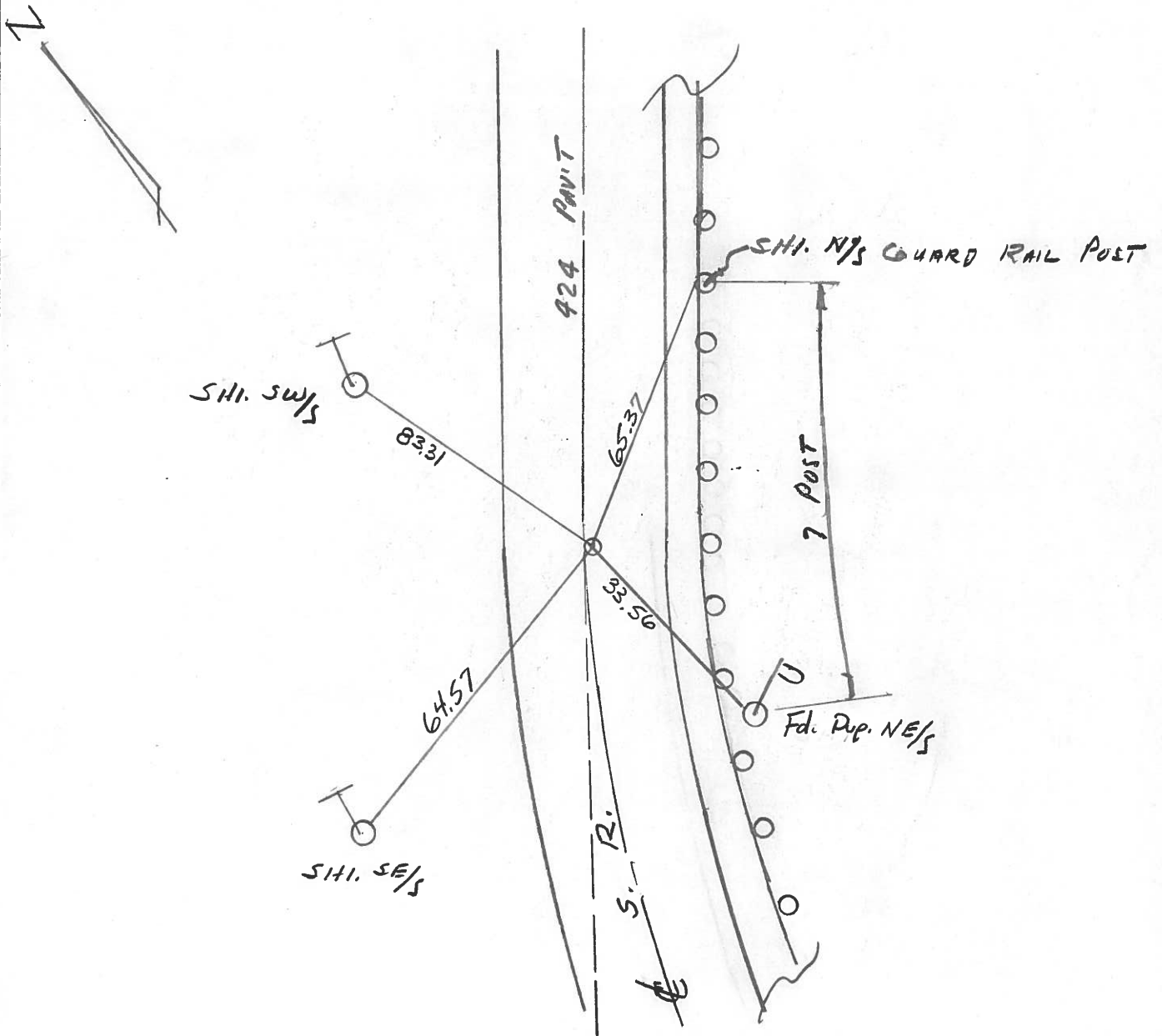
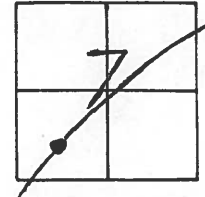
TYPE MONUMENT PK NAIL

ON SURFACE - ~~BELOW~~ ON SURFACE

LEFT - ~~C~~ PAV'T. - RIGHT 0.4' RT. OF C

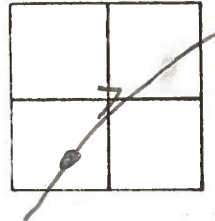
11.7 TO Lt. EDGE PAVEMENT

S.L.M. 590 + 97

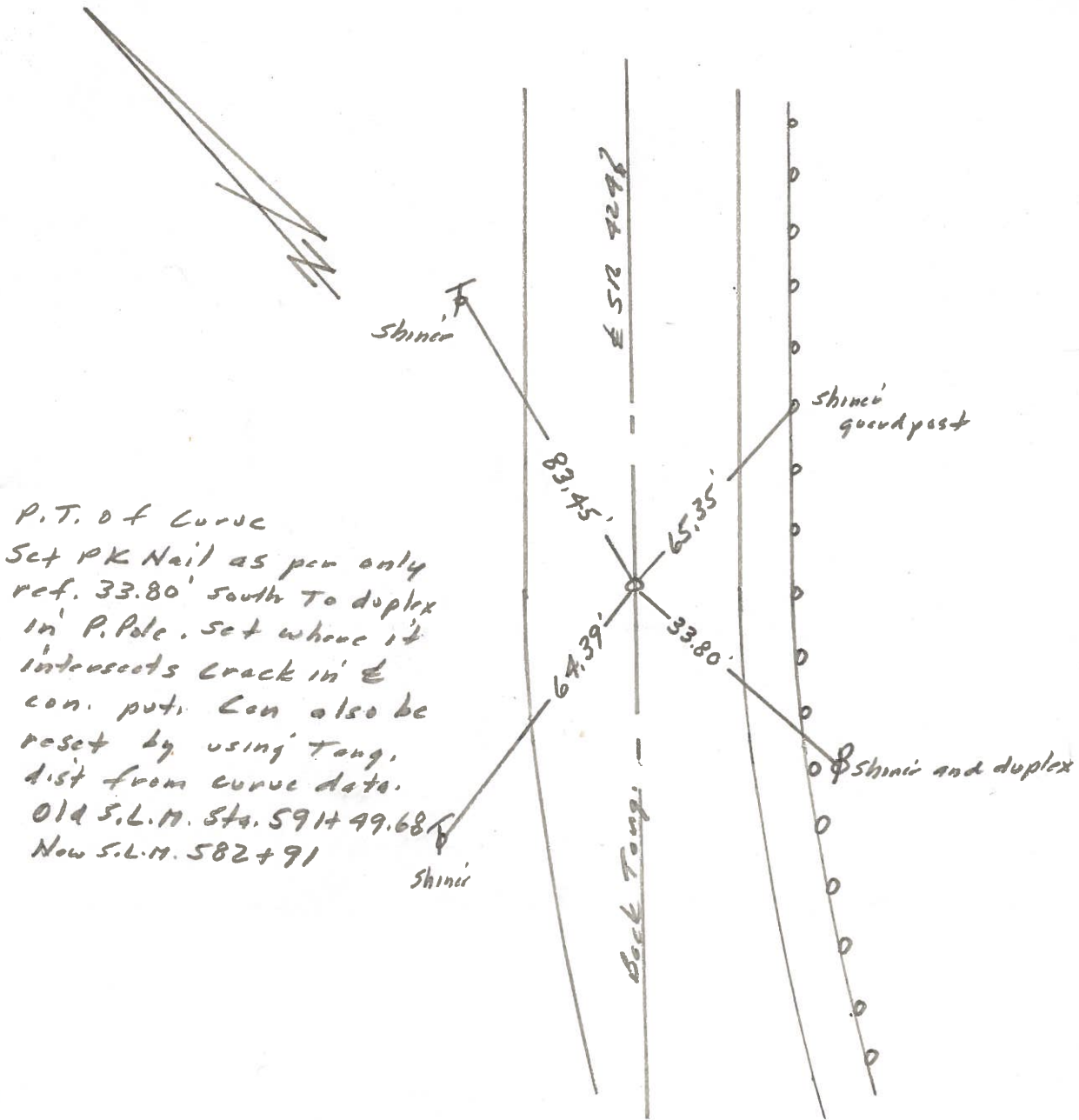


County Henry S.R. 424
 Township Harrison Liberty
 Section 7
 T N, R E
 Personnel I. Stone
P. Neuser
R. Michalak
D. Curtis

Date 7 July 82
 Weather Warm
 Temp. 84°



REF. NO. 52-A



P.T. of Curve
 Set PK Nail as per only
 ref. 33.80' south to duplex
 in P. Pole. Set where it
 intersects crack in E
 con. put. Con also be
 reset by using Tang.
 dist from curve data.
 Old S.L.M. Sta. 591+49.68
 Now S.L.M. 582+91

PERSONNEL	TITLE	PERSONNEL	TITLE
Tomsic			
Neuser			
Granata			
Vandy			

COUNTY Henry DATE Sept. 4, 1973

S. R. 424 WEATHER _____

SEC. _____ TEMP. _____

DESCRIPTION _____ LEFT _____ CENTER LINE _____ RIGHT _____ JOB NO. 246

