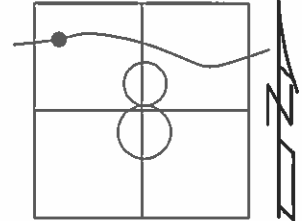


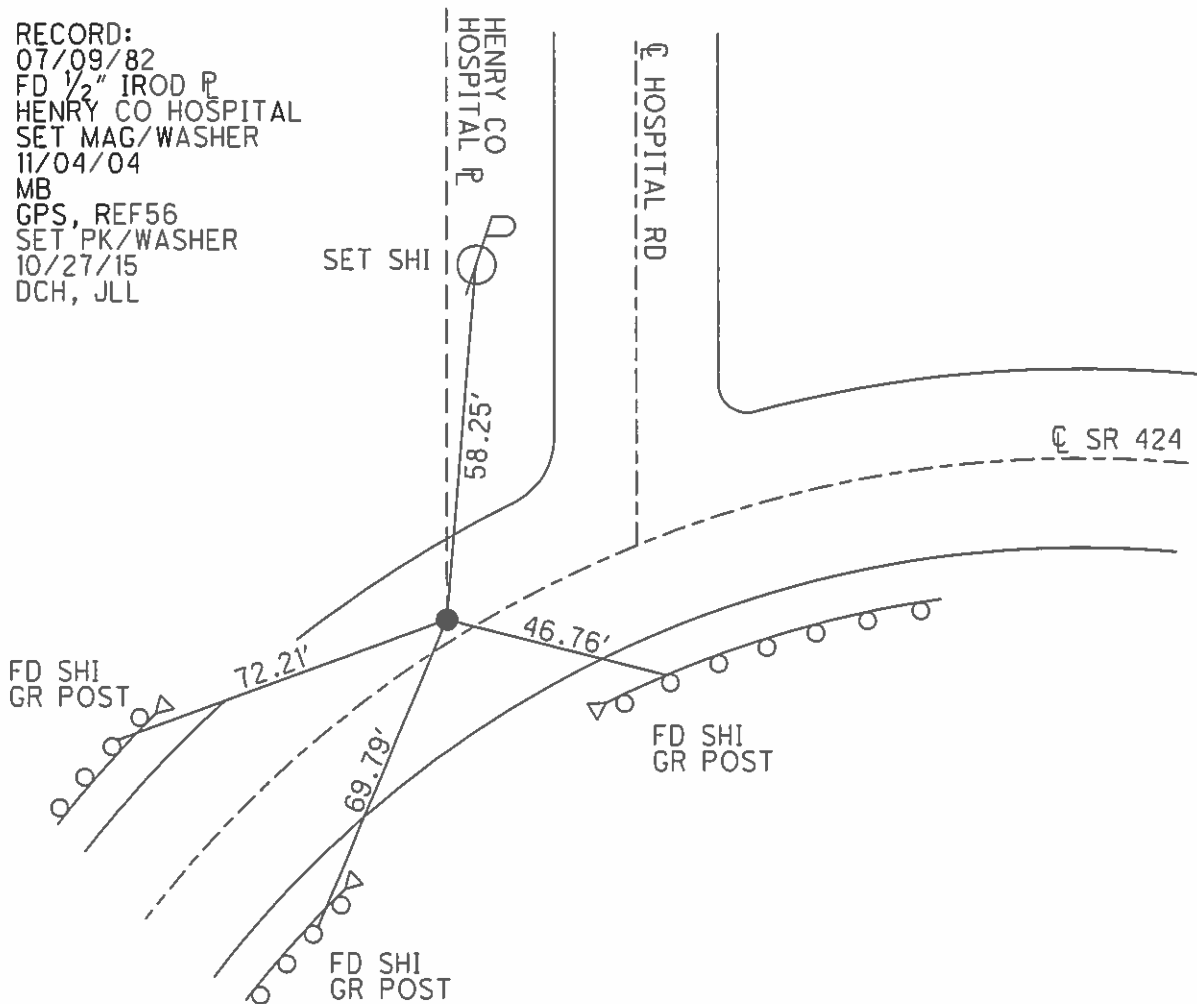
O.D.O.T. DISTRICT 2 SURVEY OFFICE (USE ONLY)

PERSONNEL _____ REFERENCE NO. 54 A SHEET 24 OF 25
 NOTES HOMAN DATE 07/10/14 ROUTE SR 424
 H.C. LEU WEATHER CLEAR COUNTY HENRY
 R.C. MEYER TEMP. +80° TOWNSHIP LIBERTY
 _____ SECTION 8
 _____ T 5 N R 7 E

TYPE MONUMENT _____ MAG _____
 ON SURFACE - ~~BELOW~~ _____ ON _____
 LEFT - ~~C PAV'T~~ - RIGHT _____ 2.0'
 _____ 14.6' TO RT EDGE PAVEMENT
 S.L.M. _____ 644+28
 Grid: Northing: 639183.728 Easting: 1532799.796



RECORD:
 07/09/82
 FD 1/2" IROD P
 HENRY CO HOSPITAL
 SET MAG/WASHER
 11/04/04
 MB
 GPS, REF56
 SET PK/WASHER
 10/27/15
 DCH, JLL



O.D.O.T. DISTRICT 2 SURVEY OFFICE

PERSONNEL

REFERENCE NO. 54-A

SHEET 20 OF 29

NOTES BARNHISEL

H.C. CANTERBURY

R.C. HOOVER

DATE 9/08/04

WEATHER CLOUDY

TEMP. +65°

ROUTE S.R. 424

COUNTY HENRY

TOWNSHIP LIBERTY

SECTION 8

T 5 N R 7 E

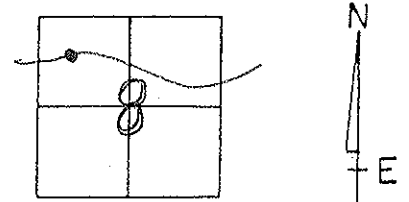
TYPE MONUMENT P.K. / WASHER

ON SURFACE - BELOW SURFACE

LEFT - ☉ PAV'T. - RIGHT ☉ 2.0' LT ☉

14.6' TO RT. EDGE PAVEMENT

S.L.M. 644 + 28

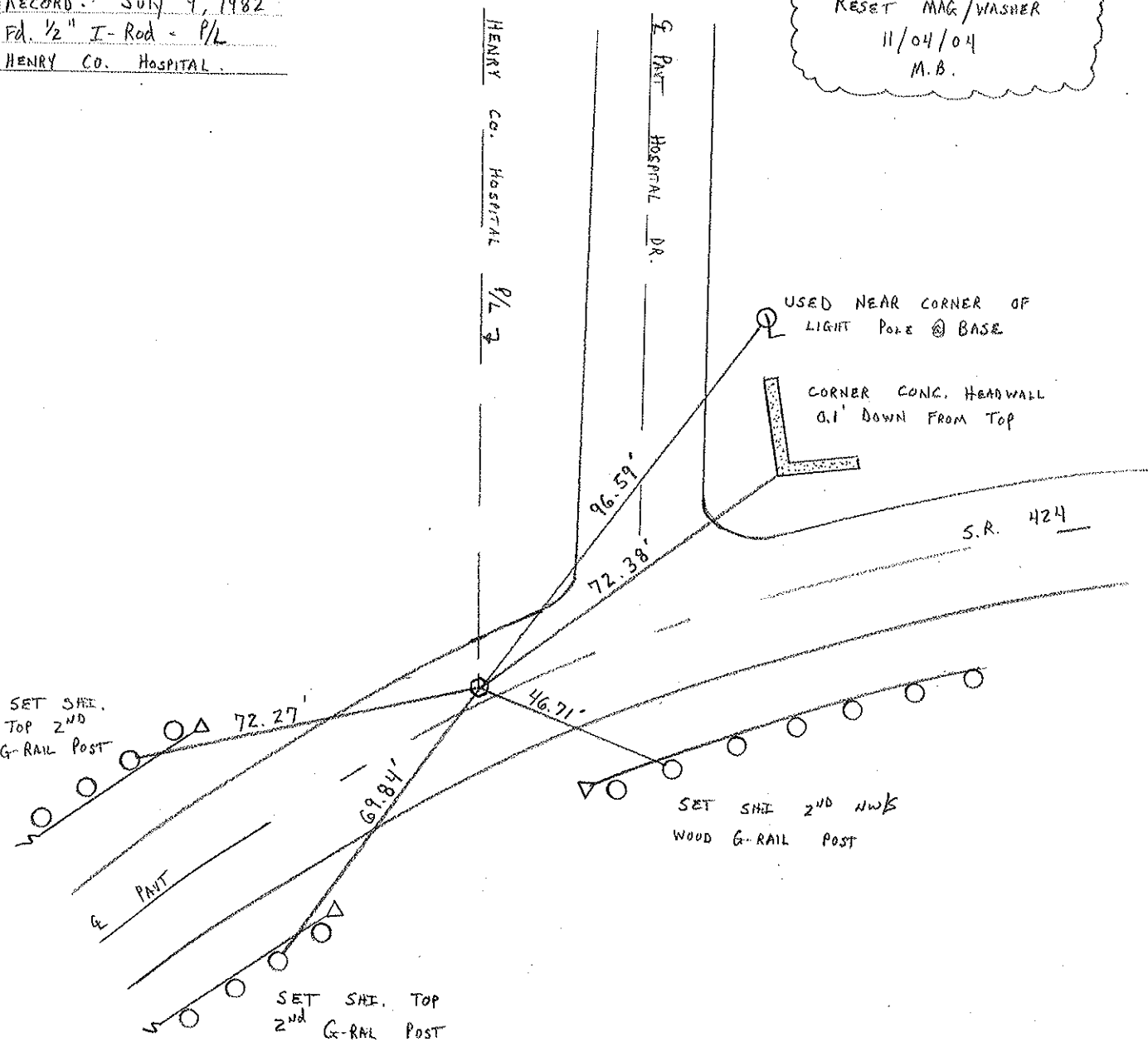


RECORD: July 9, 1982

Fd. 1/2" I-Rod - P/L

HENRY CO. HOSPITAL

RESET MAG/WASHER
 11/04/04
 M.B.



O.D.O.T. DISTRICT 2 SURVEY OFFICE

PERSONNEL

REFERENCE NO. 54-A

SHEET 12 OF 26

NOTES D. CURTIS

H.C. CANTERBURY

R.C. HERMILLER

CORDES

VOGEL

DATE 4-18-94

WEATHER Cloudy

TEMP. +68

ROUTE S.R. 424

COUNTY HENRY

TOWNSHIP LIBERTY

SECTION 8

T 5 N R 7 E

SET P.K./WASHER
8-2-94
C.L.

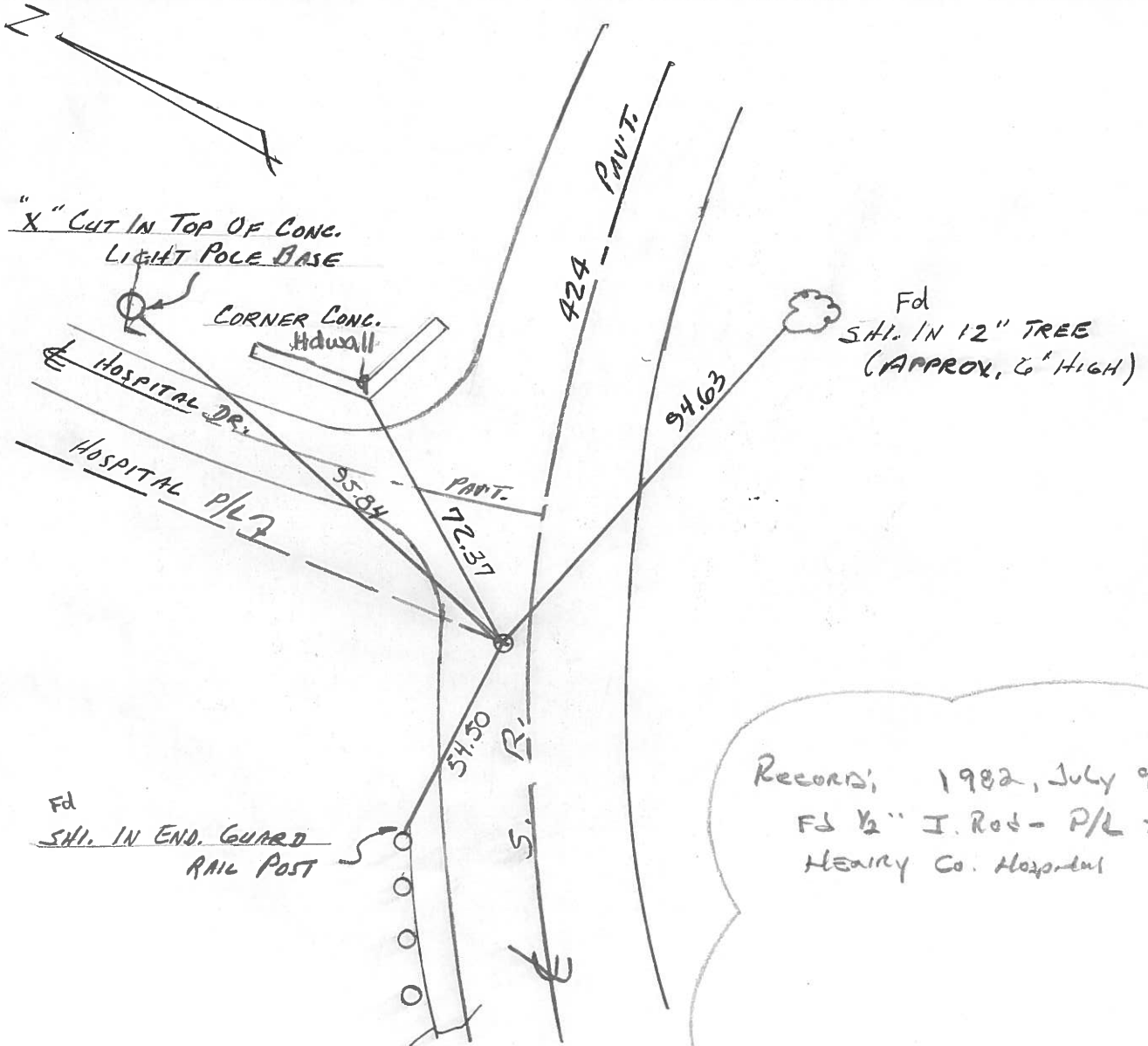
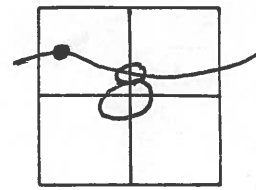
TYPE MONUMENT 1/2" I. ROD

ON SURFACE - BELOW 2" BELOW

LEFT - PAV'T. - RIGHT 2.0' Lt. E

TO EDGE PAVEMENT

S.L.M. 650 + 36



Records, 1982, July 9
Fd 1/2" I. Rod - P/L to
Henry Co. Hospital

County Henry S.R. 424

Date 9 July 82

Township Harrison LIBERTY

Weather Fair

Section 8

Temp. 78°

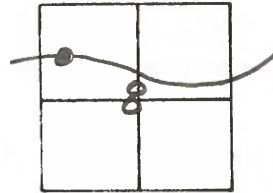
T N, R E

Personnel I. Stone

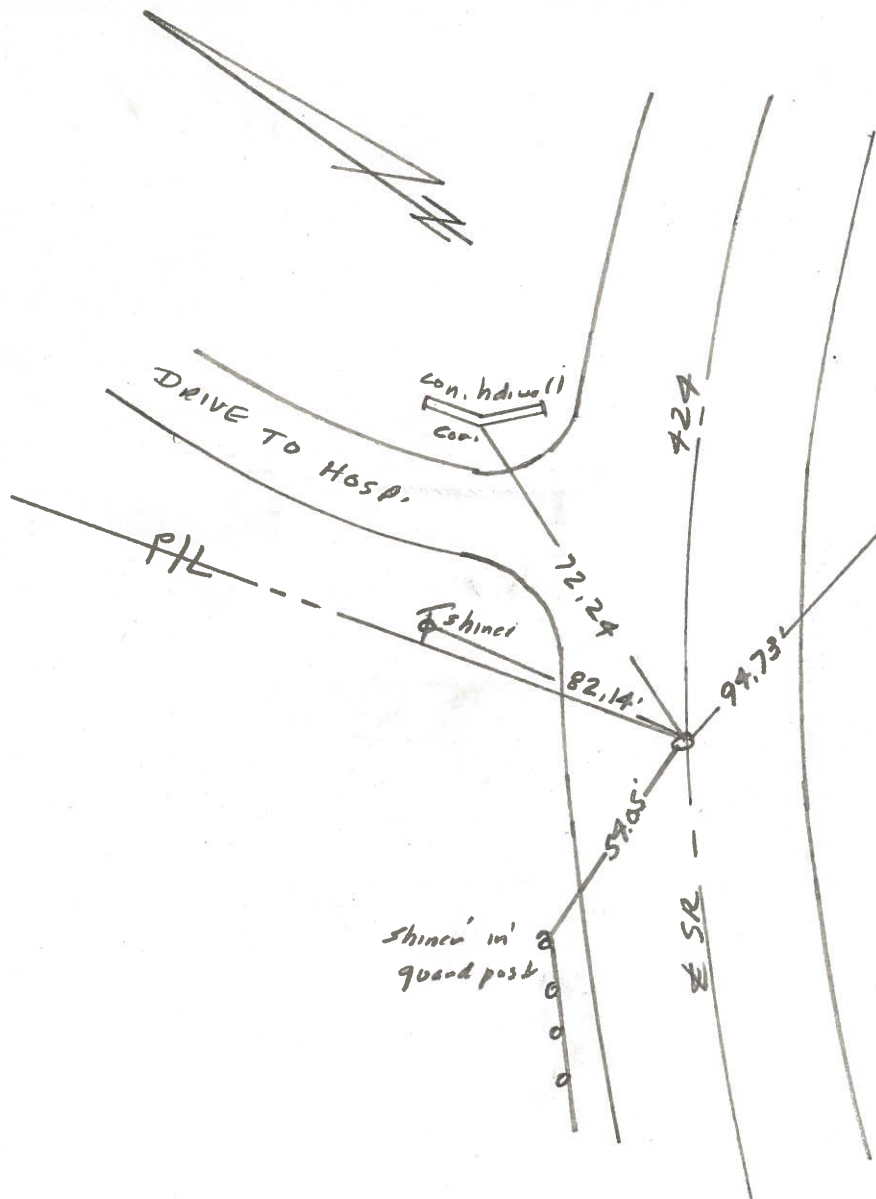
P. Neuse

R. Michalek

D. Curtis



REF. No. 54-A



Fd. 1/2" I. Rod - P/L TO
Henry Co. Hospital
56.17 Sta, 642+59.
10.0' To N. edge put.
13.6' To S. edge put.