

O.D.O.T. DISTRICT 2 SURVEY OFFICE (USE ONLY)

PERSONNEL

REFERENCE NO. 56 A

SHEET 2 OF 15

NOTES BARNHEISEL DATE 9/8/04
H.C. CANTERBURY WEATHER WINDY
R.C. HOOKER TEMP. 65°

ROUTE SR 424
COUNTY HENRY
TOWNSHIP LIBERTY
SECTION 9

DWG BY NIESE PID _____

T 5 N R 7 E

TYPE MONUMENT P.K./WASHER

ON SURFACE - ~~BELOW~~ ON

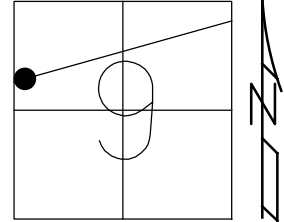
OFFSET CL PAVEMENT 1.7' ~~LT~~ : RT

9.9' TO RT EDGE PAVEMENT

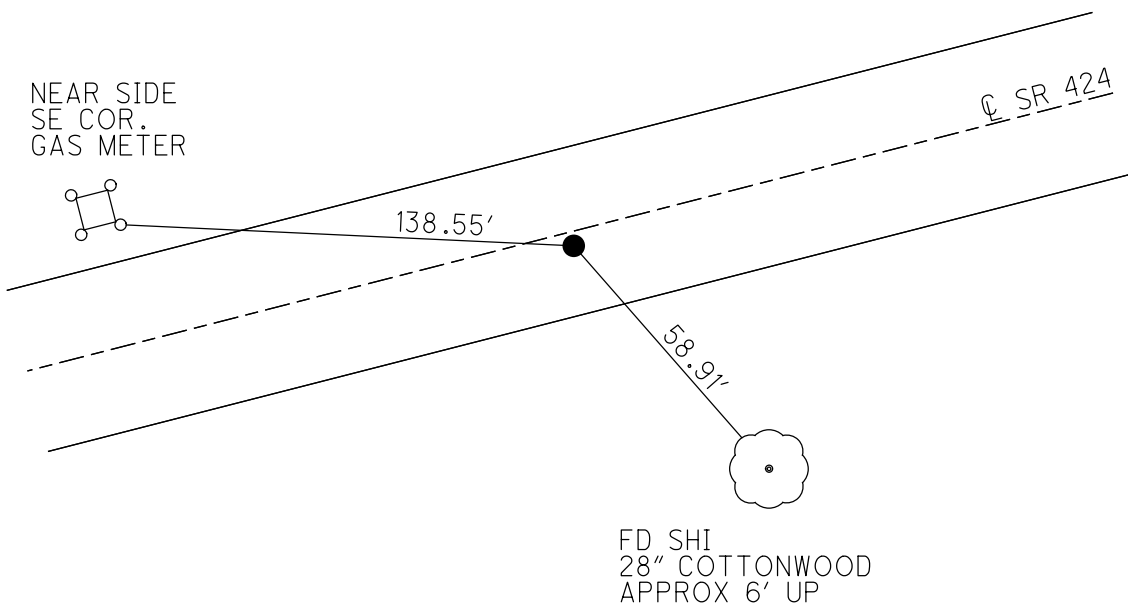
STATION: 680+30

HORZ. DATUM: _____ GEOID: _____

GRID: NORTHING: _____ EASTING: _____



RECORD:
FD P.K./WASHER
9/8/04, MB
SET MAG/WASHER
10/27/04, MC



O.D.O.T. DISTRICT 2 SURVEY OFFICE

PERSONNEL

REFERENCE NO. 56-A

SHEET 23 OF 29

NOTES BARNHISEL

H.C. CANTERBURY

R.C. HOOGER

M.C. - DRAWING

DATE 9/08/04

WEATHER WINDY

TEMP. +65°

ROUTE S.R. 424

COUNTY HENRY

TOWNSHIP LIBERTY

SECTION 9

T 5 N R 7 E

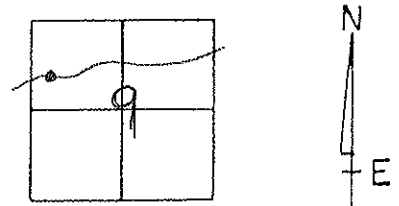
TYPE MONUMENT P.K. / WASHER

ON SURFACE - BELOW SURFACE

LEFT - ♀ PAV'T. - RIGHT 1.7' RT ♀

9.9 TO RT. EDGE PAVEMENT

S.L.M. 680 + 30



RESET MAG/WASHER
 10/27/04
 M.C.

NEAR SIDE
S/E COR. GAS METER



138.55'

♀ PAVT.

58.91'

S.R. 424



Fd. SHI NW/5
 28" COTTONWOOD
 Approx 6' up

O.D.O.T. DISTRICT 2 SURVEY OFFICE

PERSONNEL

REFERENCE NO. 56-A SHEET 15 OF 26

NOTES D. CURTIS

H.C. CANTERBURY

DATE 4-13-94

ROUTE S.R. 424

R.C. HERMILLER

WEATHER WINDY

COUNTY HENRY

CORDES

TEMP. +68

TOWNSHIP LIBERTY

VOGEL

SECTION 9

T 5 N R 7 E

TYPE MONUMENT P.K. NAIL

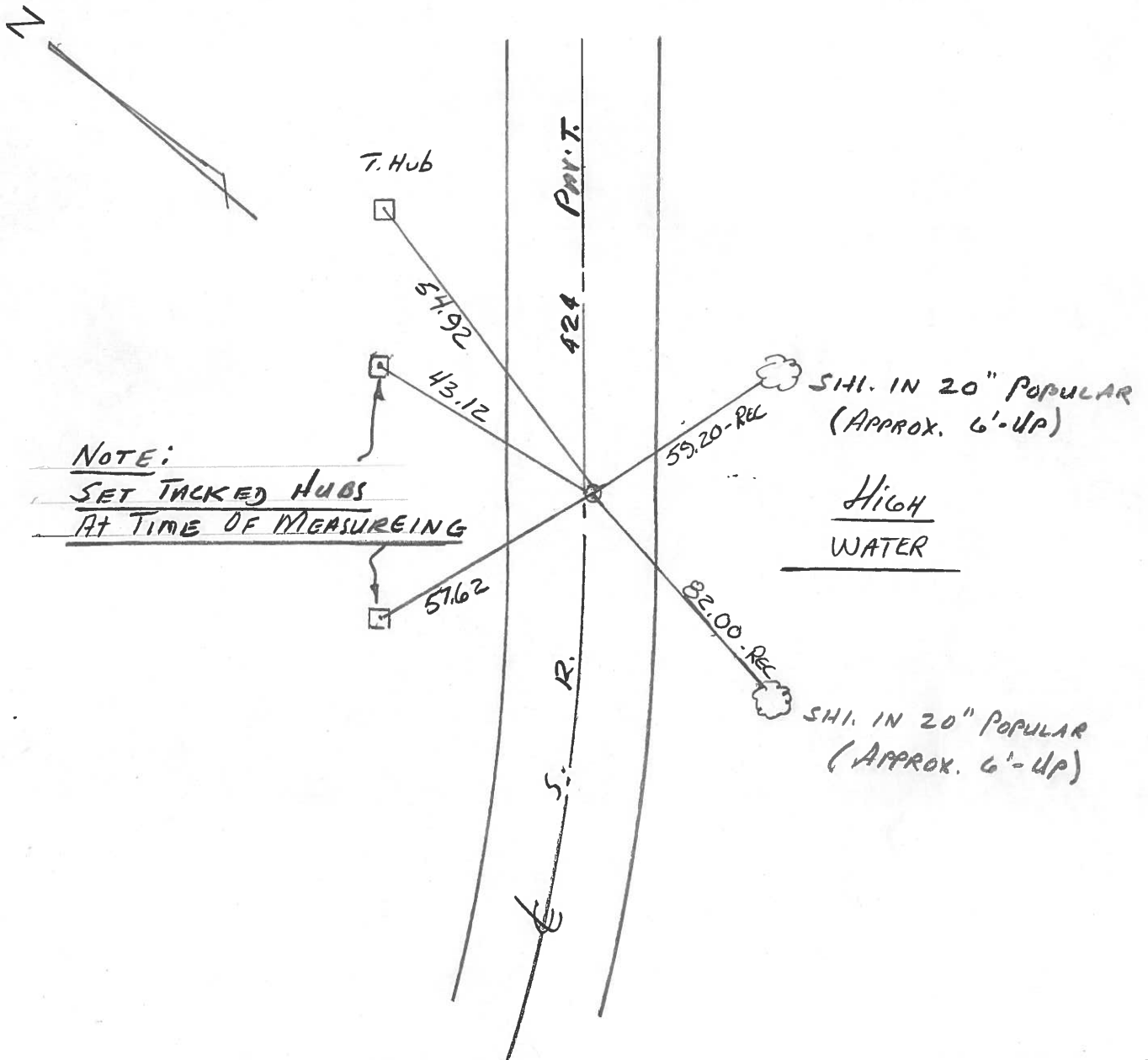
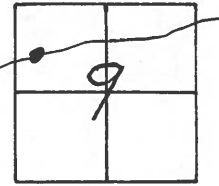
Set P.K./WASHER
8-2-94
C.L.

ON SURFACE - ~~BELOW~~ ON SURFACE

LEFT- ~~C~~ PAV'T. - RIGHT 1.7' RT. E PAV'T

11.0 TO RT EDGE PAVEMENT

S.L.M. 686 + 51



O.D.O.T. DISTRICT 2 SURVEY OFFICE

SHEET 15 OF

County Henry S.R. 424

Date 7 July 82

Township Harrison LIBERTY

Weather Warm

Section 9

Temp. 81°

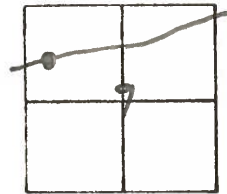
T N, R E

Personnel L. Stone

P. Newson

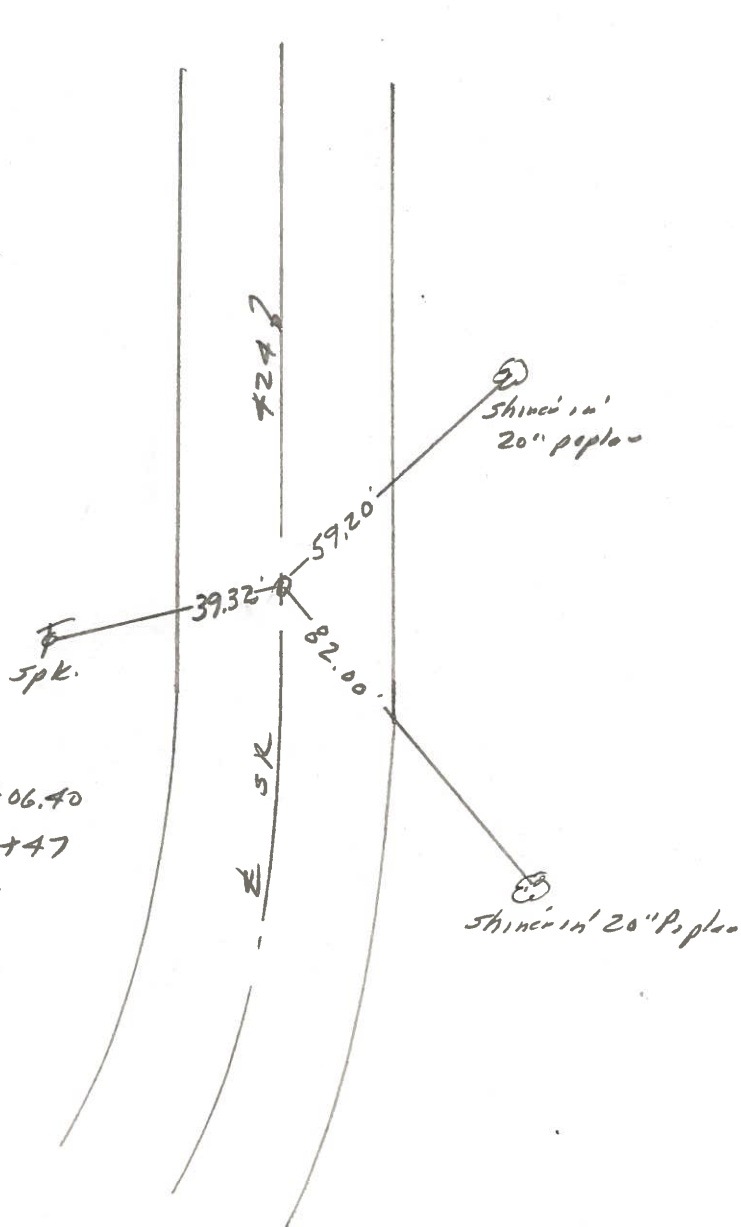
R. Michalski

D. Curtis



REF. No. 56-A

Fd. PK Nail
P.T. old SLM, 687+06.40
New SLM Sta. 678+47
13.3' to N. edge put,
10.4' to S. edge put.



PERSONNEL	TITLE	PERSONNEL	TITLE
Tomsic			
Nesser			
Granata			
Janyo			

COUNTY Henry DATE Sept. 13, 1973

S. R. 424 WEATHER _____

SEC. _____ TEMP. _____

DESCRIPTION _____ LEFT _____ CENTER LINE _____ RIGHT _____ JOB NO. _____

