

O.D.O.T. DISTRICT 2 SURVEY OFFICE (USE ONLY)

PERSONNEL _____

REFERENCE NO. 57

SHEET 3 OF 15

NOTES BARNHISEL

DATE 9/8/04

ROUTE SR 424

H.C. CANTERBURY

WEATHER CLOUDY

COUNTY HENRY

R.C. HOOKER

TEMP. 65°

TOWNSHIP LIBERTY

SECTION 9

DWG BY NIESE PID _____

T 5 N R 7 E

TYPE MONUMENT P.K./WASHER

ON SURFACE - ~~BELOW~~ ON

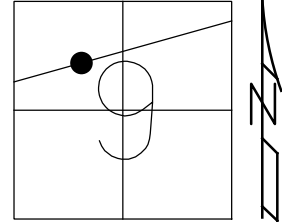
OFFSET Q PAVEMENT 6.8' LT : ~~RT~~

5.1' TO LT EDGE PAVEMENT

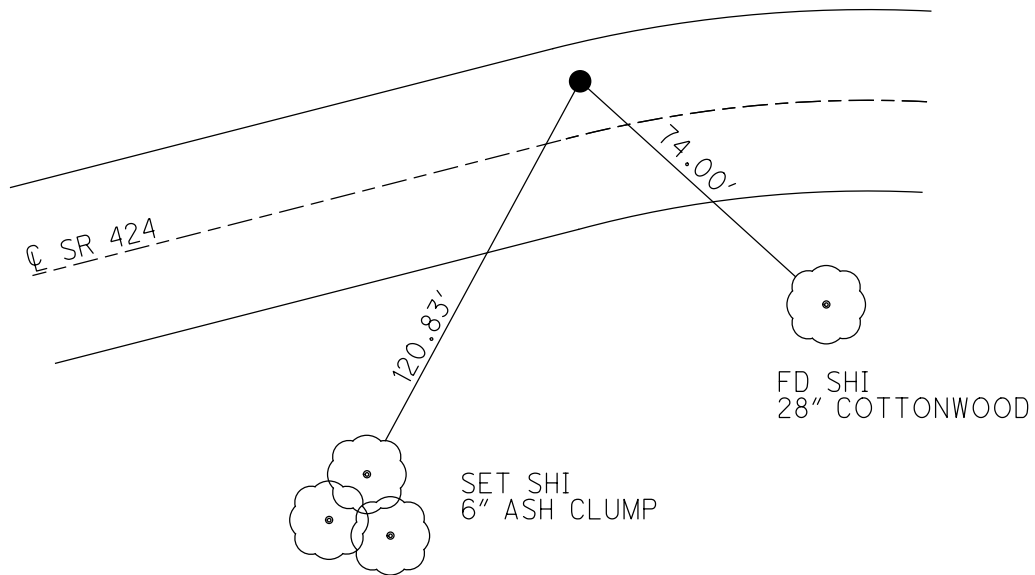
STATION: 694+40

HORZ.DATUM: _____ GEOID: _____

GRID: NORTHING: _____ EASTING: _____



RECORD:
 FD P.K./WASHER
 9/8/04, MB
 SET MAG/WASHER
 10/27/04, MC



O.D.O.T. DISTRICT 2 SURVEY OFFICE

PERSONNEL

REFERENCE NO. 57

SHEET 24 OF 29

NOTES BARNISEL

H.C. CANTERBURY

R.C. HOOKE

MC-DRAWING

DATE 9/08/04

WEATHER CLOUDY

TEMP. +65

ROUTE S.R. 424

COUNTY HENRY

TOWNSHIP LIBERTY

SECTION 9

T 5 N R 7 E

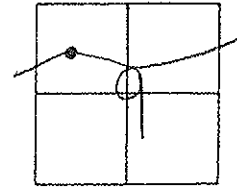
TYPE MONUMENT P.K. / WASHER

ON SURFACE - ~~BELOW~~ SURFACE

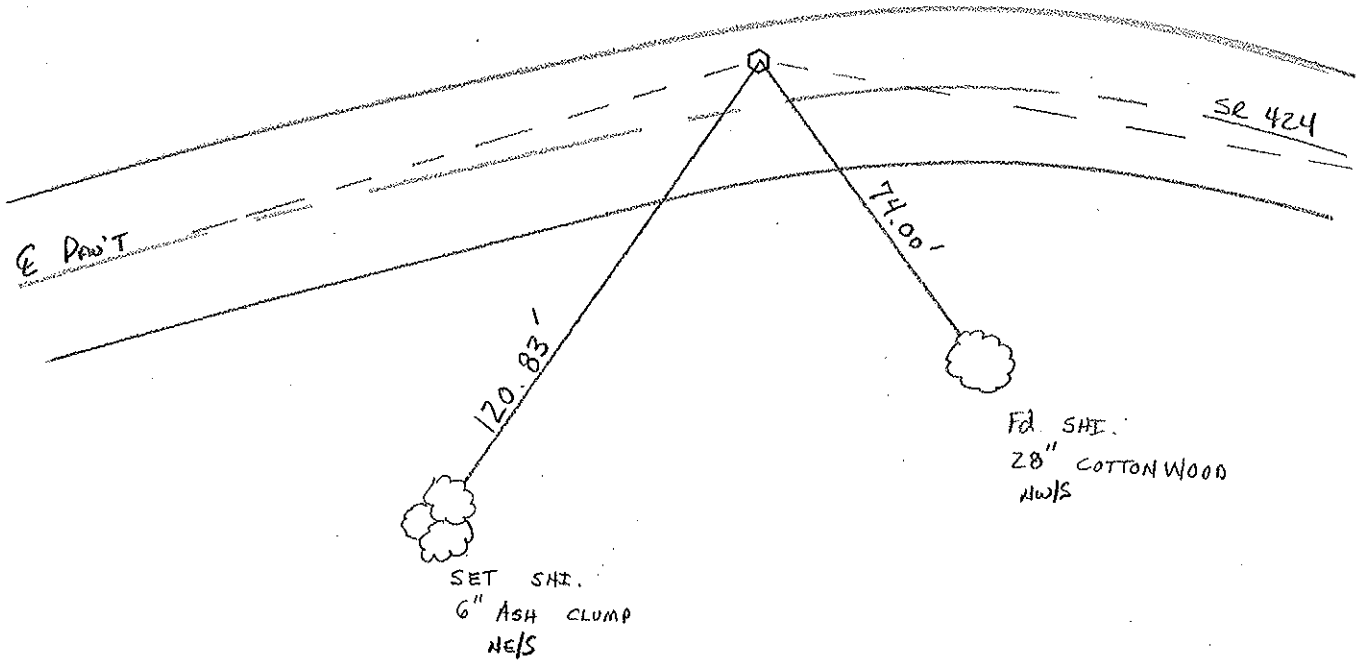
LEFT - ~~C. PAV'T.~~ - RIGHT 6.8' LT & PAVT

5.1' TO LT. EDGE PAVEMENT

S.L.M. 694 + 40



RESET MAG/WASHER
10/27/04
M.C.



O.D.O.T. DISTRICT 2 SURVEY OFFICE

PERSONNEL

REFERENCE NO. 57

SHEET 14 OF 26

NOTES D. CURTIS

H.C. CANTERBURY

DATE 4-19-94

ROUTE S.R. 424

R.C. VOGEL

WEATHER Cloudy

COUNTY HENRY

LOEHRKE

TEMP. +60

TOWNSHIP LIBERTY

SECTION 9

T 5 N R 7 E

Set P.K. / WASHER
8-2-94

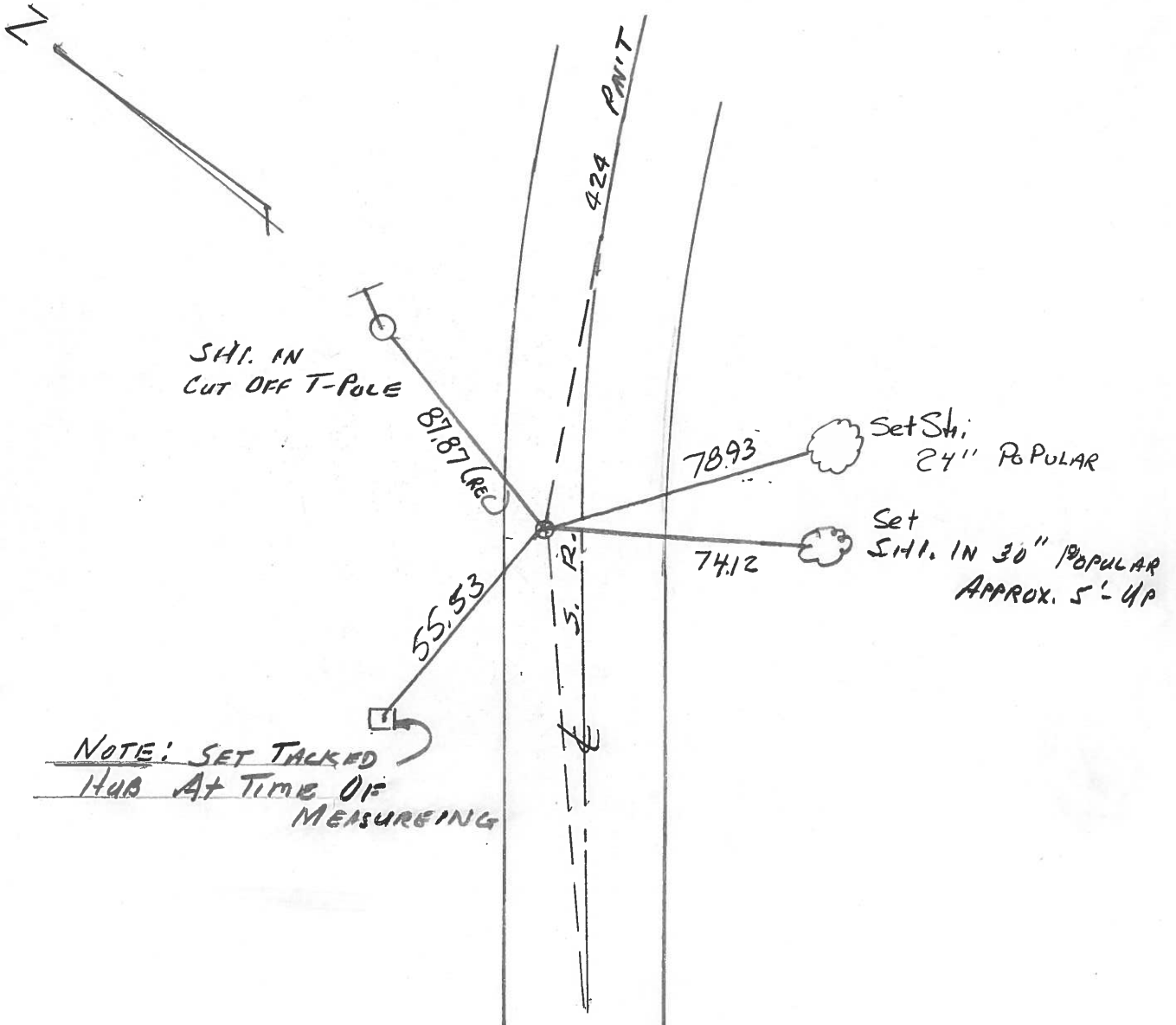
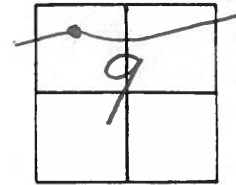
TYPE MONUMENT 1/2" IRON PIN

ON SURFACE - BELOW 2" BELOW SURFACE

LEFT - PAV'T. - RIGHT 6.5' LT. & PAV'T.

6.2 TO LT EDGE PAVEMENT

S.L.M. 700 + 61

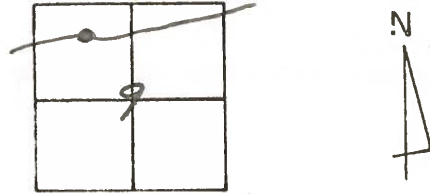


O.D.O.T. DISTRICT 2 SURVEY OFFICE

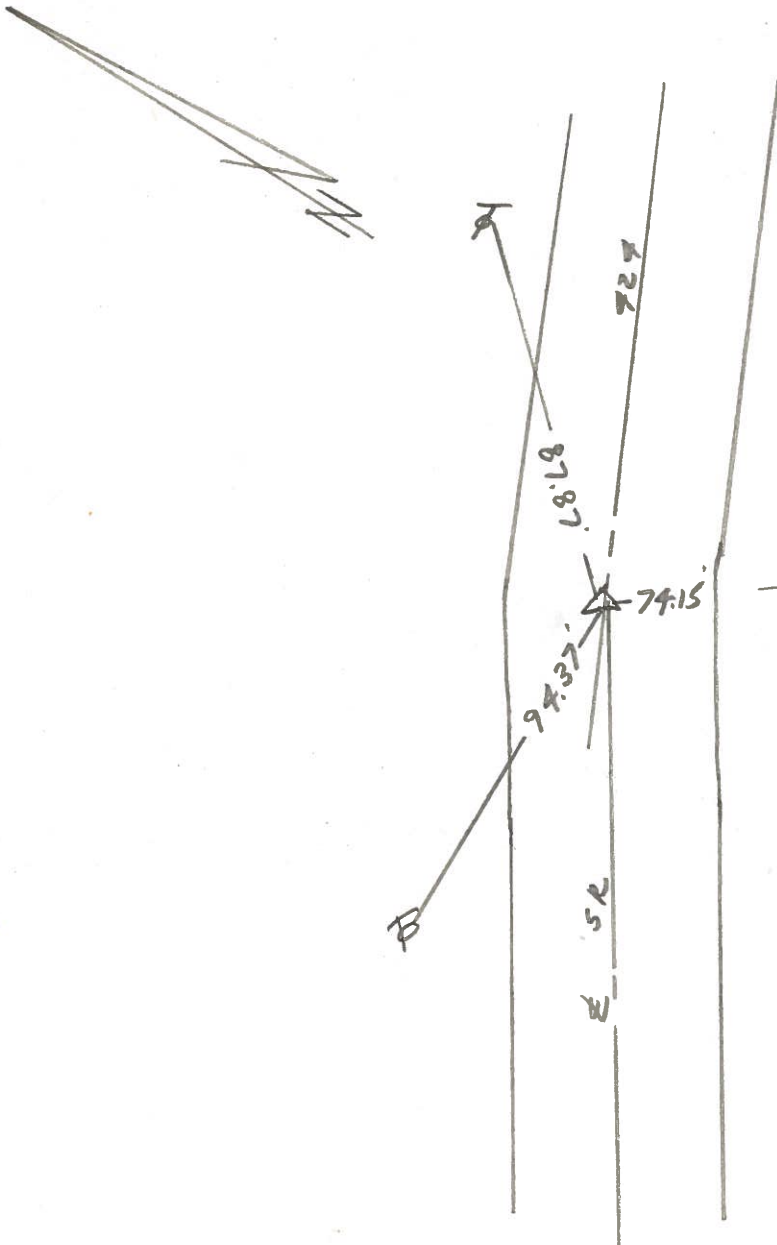
SHEET 16 OF

County Henry S.R. 424
 Township Harrison LIBERTY
 Section 9
 T N, R E
 Personnel J. Stone
P. Neuse
R. Michalak
D. Curtis

Date 9 July 82
 Weather Warm
 Temp. 84°



REF. NO. 57



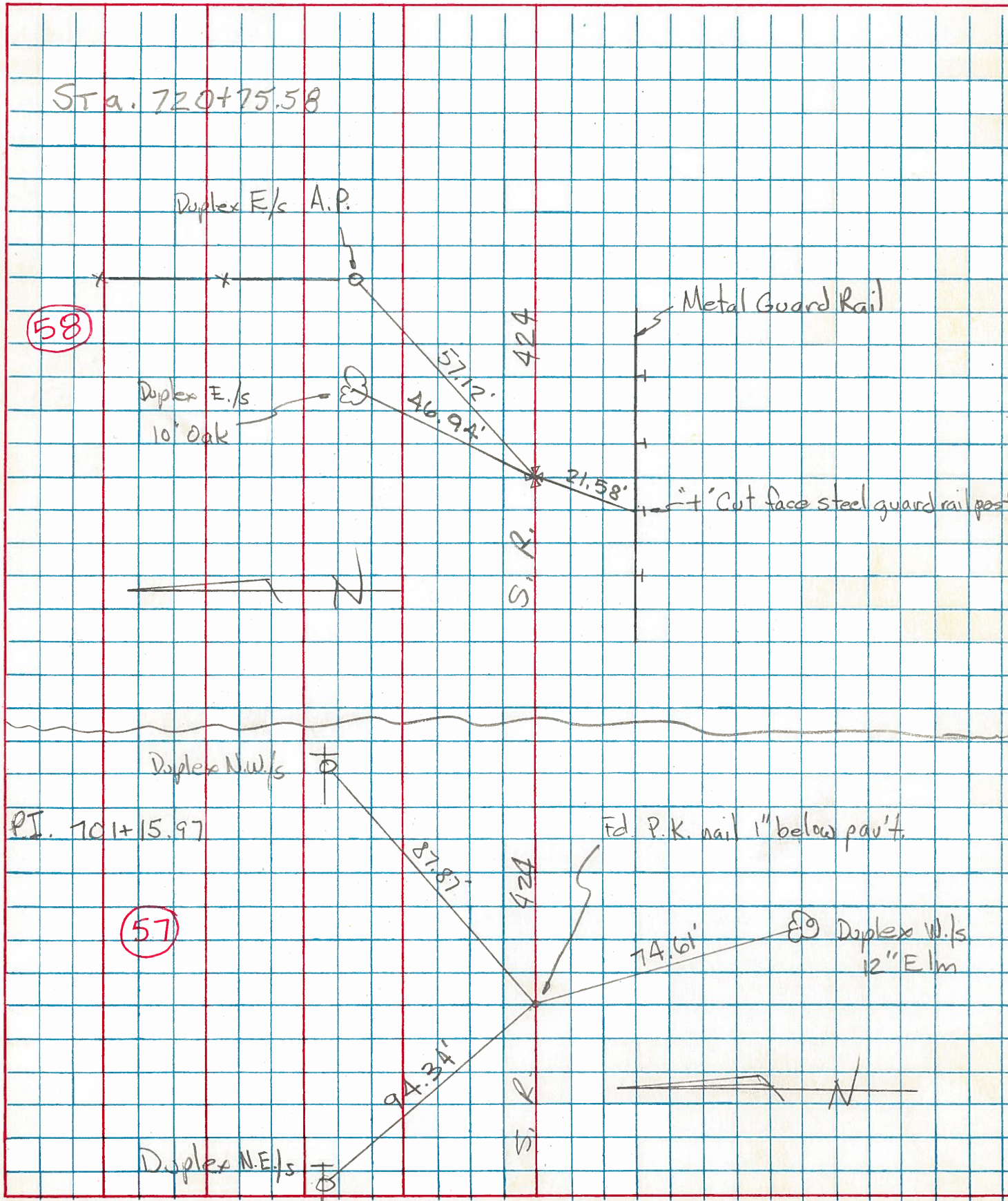
⑤
 Shinc 18" Turn
 5' up

Fd. 1. Pin P.I. 012 S.L.M.
 Sta. 701+15.97 - New S.L.M.
 Sta. 692+58
 5.5' To N. edge post
 18.5' To S. edge post

PERSONNEL	TITLE	PERSONNEL	TITLE
Tomsic			
Neuser			
Granata			
Vanyo			

COUNTY Henry DATE Sept. 14, 1977
 S. R. 424 WEATHER _____
 SEC. _____ TEMP. _____

DESCRIPTION _____ LEFT _____ CENTER LINE _____ RIGHT _____ JOB NO. _____



PERSONNEL TITLE PERSONNEL TITLE

Beach

COUNTY Henry

DATE Apr. 59

Ruffer

S. R. US-24

WEATHER

Knape

SEC. 11.22

TEMP.

Delventhal

DESCRIPTION

E Constr.

JOB NO.

LEFT

CENTER LINE

RIGHT

CURVE # 4

P.I. Sta. 701+15.97

$\Delta - 2^{\circ}57' \text{ Rt.}$

D - 0°17'

T - 520.73'

L - 1041.18'

E - 6.71'

R - 20222.04'

P.C. 695+95.24

P.T. 706+36.42

P.C. Sta. 695+95.24
Est. P.K. w/shiner

Dup. W. Side

59.21'

57.38'

73.98'

Dup. SE Side
19" Cotton

Dup. SW Side
21" Cotton

Dup. SE Side
19" Cotton

P.T. Sta. 706+36.42
Est. P.K. w/shiner

Dup. NW Side

60.64'

72.29'

97.53'

Dup. NW Side
30" Elm

Dup. SW Side
32" Elm

Dup. W. Side
37" Elm

P.I. Sta. 701+15.97
Est. P.R. spk

65.10'

45.97'

49.24'

Dup. SW Side
22" Elm

Dup. E. Side
27" Elm

Dup. E. Side
31" Elm

