

O.D.O.T. DISTRICT 2 SURVEY OFFICE (USE ONLY)

PERSONNEL

REFERENCE NO. 61

SHEET 9 OF 15

NOTES CURTIS

DATE 4/19/94

ROUTE (OLD) SR 424

H.C. CANTERBURY

WEATHER PARTLY CLOUDY

COUNTY HENRY

R.C. VOGEL  
LOEHRKE

TEMP. 64°

TOWNSHIP LIBERTY

DWG BY NIESE PID \_\_\_\_\_

SECTION 9

T 5 N R 7 E

TYPE MONUMENT LG.R.R.SPIKE

~~ON SURFACE~~ - BELOW 2"

OFFSET CL PAVEMENT 8.4' ~~RT~~ : RT

3.2' TO RT EDGE PAVEMENT

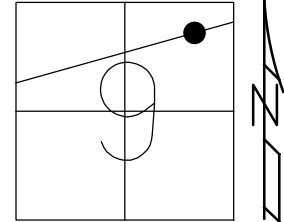
STATION: 742+37

HORZ.DATUM: \_\_\_\_\_

GEOID: \_\_\_\_\_

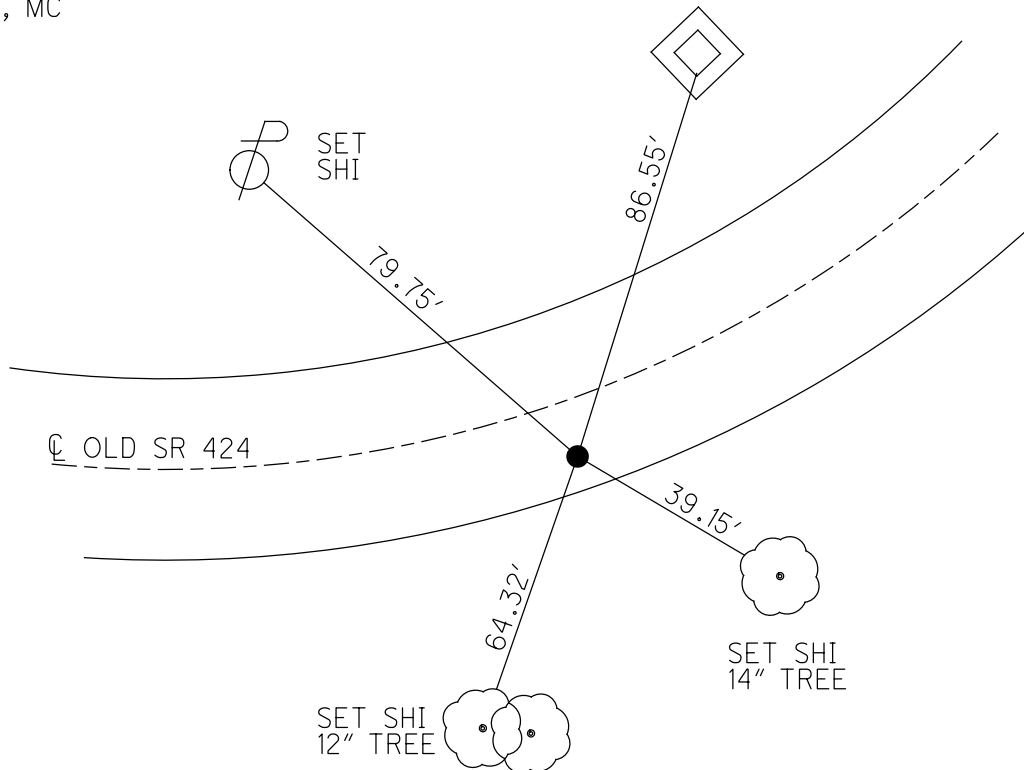
GRID: NORTHING: \_\_\_\_\_

EASTING: \_\_\_\_\_



RECORD: P.I.  
STA 742+91.47  
FD LG R.R. SPIKE  
4/19/94, MC

"+" CUT SW COR.  
STEEL GRATE OF CB



# O.D.O.T. DISTRICT 2 SURVEY OFFICE

PERSONNEL

REFERENCE NO. 61

SHEET 21 OF 26

NOTES D. CURTIS

H.C. CANTERBURY

R.C. VOGEL

LOEHRKE

DATE 4-13-94

WEATHER Pt Cloudy

TEMP. 764

ROUTE (OLD) S. R. 424

COUNTY HENRY

TOWNSHIP LIBERTY

SECTION 9

T 5 N R 7 E

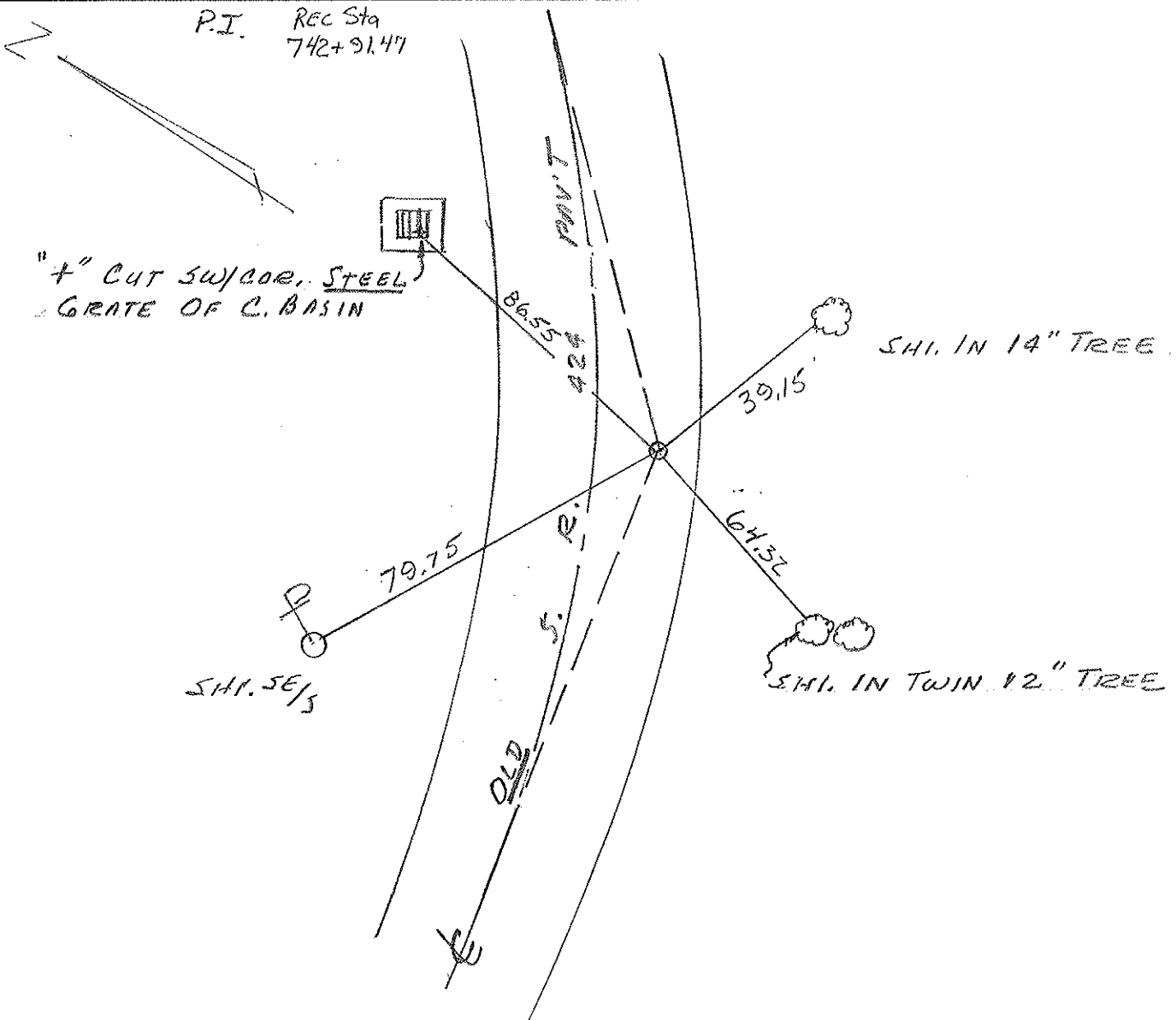
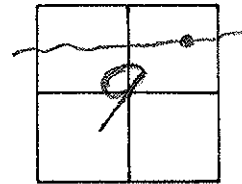
TYPE MONUMENT LG. R. R. SPK.

ON SURFACE - BELOW 2" BELOW SURFACE

LEFT-0 PAV'T. - RIGHT 8.4' RT. 0 PAV'T

3.2' TO RT. EDGE PAVEMENT

S.L.M. 742 + 37



PERSONNEL	TITLE	PERSONNEL	TITLE	COUNTY	DATE
Beach				Henry	Apr. 59
Rutter				US-24	
Knape					
Delventhal				11.22	

DESCRIPTION ± constr. LEFT CENTER LINE RIGHT JOB NO. \_\_\_\_\_

CURVE # (6)

P.I. Sta. 742+91.47  
 $\Delta - 5^{\circ} 58' 1/2''$  Lt.  
 D -  $1^{\circ}$   
 T - 299.03'  
 L - 597.50'  
 E - 7.80'  
 R - 5729.58

P.C. Sta. 739+92.44  
 P.T. Sta. 745+89.94

