

O.D.O.T. DISTRICT 2 SURVEY OFFICE (USE ONLY)

PERSONNEL

REFERENCE NO. 65

SHEET 15 OF 15

NOTES CURTIS

DATE 4/19/94

ROUTE (OLD) SR 424

H.C. CANTERBURY

WEATHER SUNNY

COUNTY HENRY

R.C. VOGEL

TEMP. 64°

TOWNSHIP LIBERTY

LOEHRKE

DWG BY NIESE PID \_\_\_\_\_

SECTION 9

T 5 N R 7 E

TYPE MONUMENT P.K. NAIL

ON SURFACE - ~~BELOW~~ ON

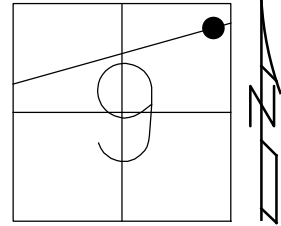
OFFSET Q PAVEMENT ON LT : RT

12.0' TO LT EDGE PAVEMENT

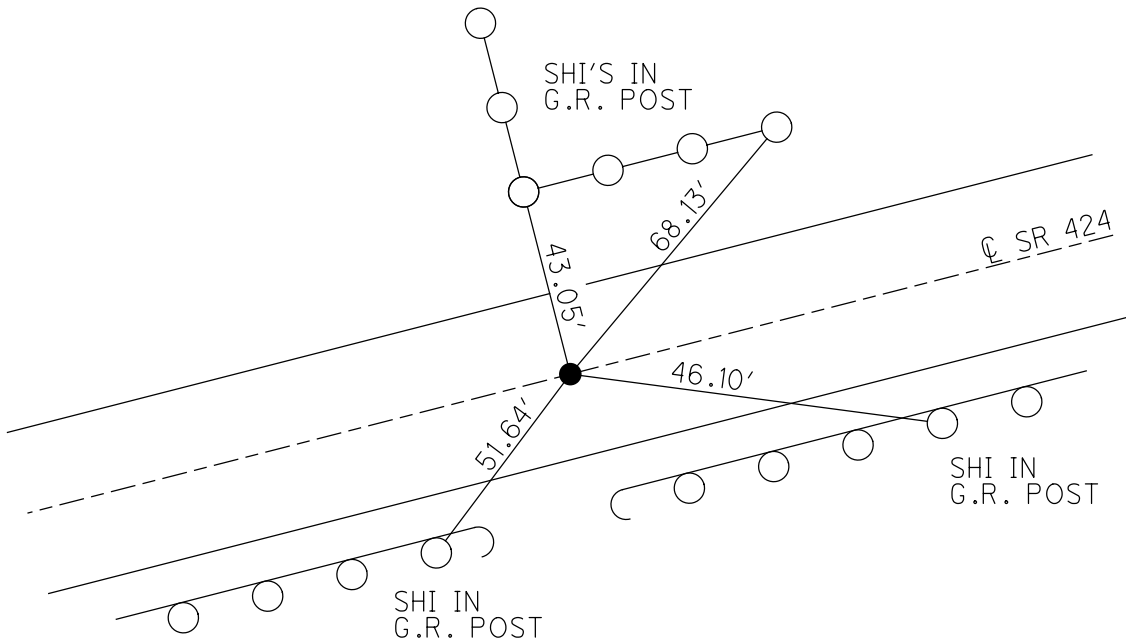
STATION: 766+78

HORZ. DATUM: \_\_\_\_\_ GEOID: \_\_\_\_\_

GRID: NORTHING: \_\_\_\_\_ EASTING: \_\_\_\_\_



RECORD:  
FD P.K./NAIL  
4/19/94, MC



# O.D.O.T. DISTRICT 2 SURVEY OFFICE

PERSONNEL

REFERENCE NO. 65

SHEET 25 OF 26

NOTES D. CURTIS

H.C. CANTERBURY

DATE 4-19-94

ROUTE OLD S.R. 424

R.C. VOGEL

WEATHER Sunny

COUNTY HENRY

LOEHRKE

TEMP. +64

TOWNSHIP LIBERTY

SECTION 9

T 5 N R 7 E

TYPE MONUMENT P.K. NAIL

ON SURFACE -- ~~BELOW~~ ON SURFACE

LEFT -- ~~PAV'T.~~ -- RIGHT ON E. PAV'T.

12.0 TO LT. EDGE PAVEMENT

S.L.M. 766 + 78

