

FED. RD. DIVISION	STATE	PROJECT	FISCAL YEAR
2	OHIO		1948

1  
14

LUCAS COUNTY  
LUC-2-( 5.76- 9.14)

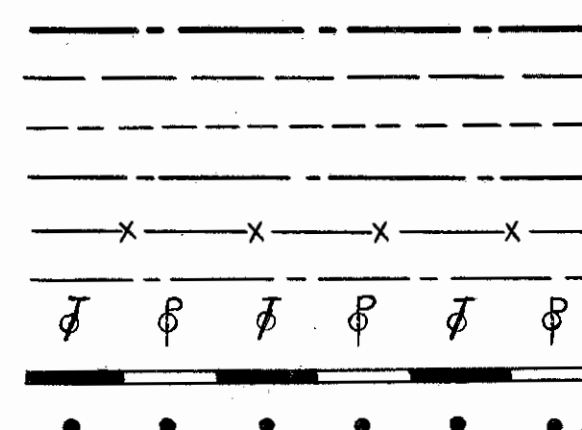
352

# STATE OF OHIO DEPARTMENT OF HIGHWAYS LUC-2-( 5.76- 9.14) LUCAS COUNTY SPRINGFIELD & ADAMS TOWNSHIPS

### CONVENTIONAL

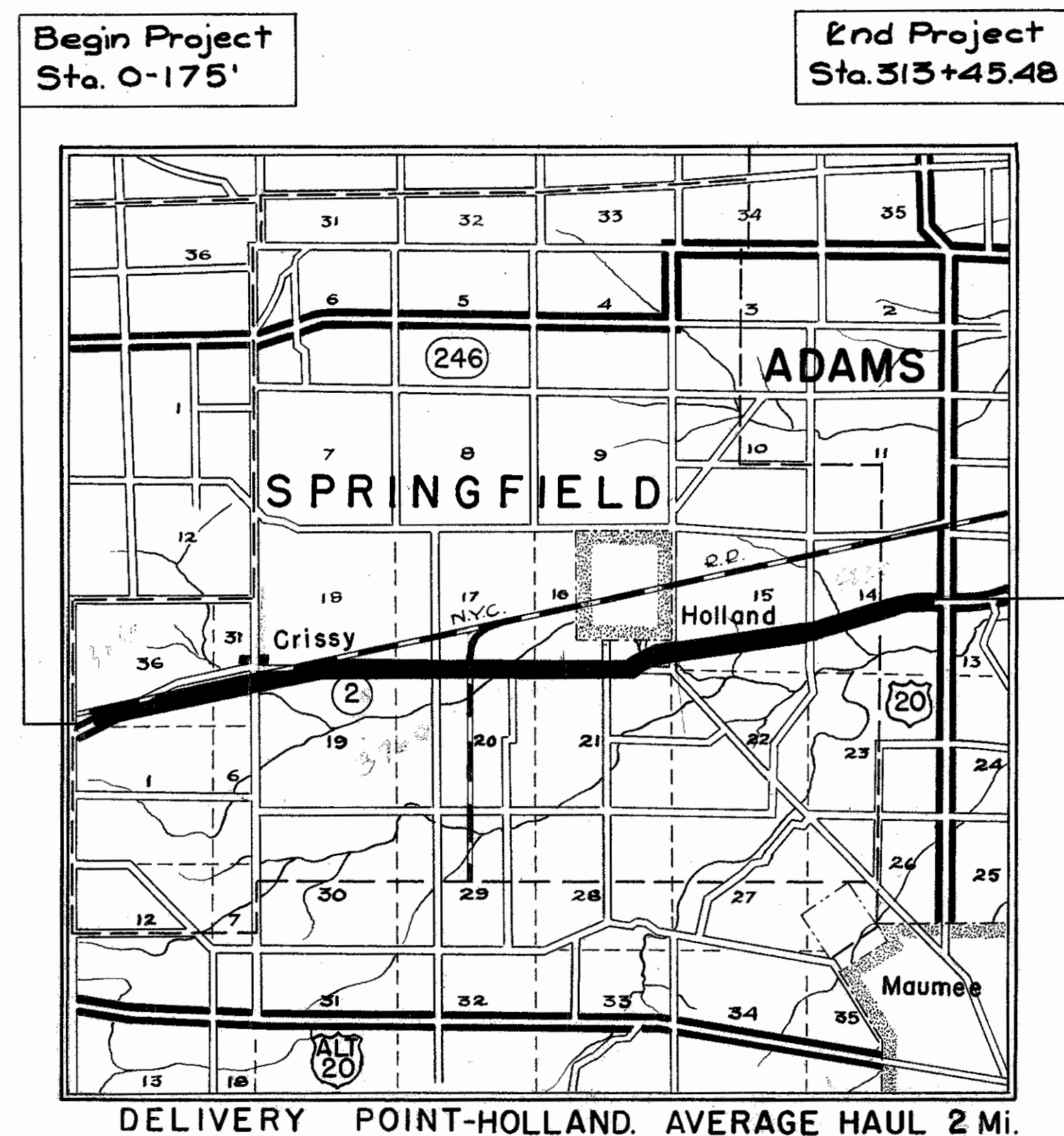
COUNTY LINE  
TOWNSHIP LINE  
SECTION LINE  
CORPORATION LINE  
FENCE LINE  
CENTER LINE  
POLE LINE  
STEAM RAILROAD  
GUARD RAIL

### SIGNS



### INDEX OF SHEETS

TITLE SHEET	1
TYPICAL SECTIONS	2
GENERAL NOTES	3
PAVEMENT COMPUTATIONS	3
GENERAL SUMMARY	3
PLAN & PROFILE	4-14



### LOCATION PLAN

Scale 1" = 1 MI.

PORTION TO BE IMPROVED  
STATE HIGHWAYS  
OTHER ROADS  
DETOURS

### SCALES

PLAN 1" = 100'  
PROFILE HORIZONTAL 1" = 100'  
PROFILE VERTICAL 1" = 5'  
CROSS SECTIONS

### LINE DATA

BEGIN PROJECT	STA.	0-175'
END PROJECT	STA.	313+45.48
GROSS LENGTH	=	31520.48 Lin.ft.
DEDUCT FOR RAILROAD		9.0 Lin.ft.
NET LENGTH	=	31511.48 Linft or 5.968 Miles

SUPPLEMENTAL SPECIFICATIONS	STANDARD DRAWINGS
None	None

The Standard Specifications of the State of Ohio, Department of Highways, including changes and Supplemental Specifications listed in the proposal shall govern this improvement.

The right of way necessary for this improvement will be provided by the State of Ohio.

I hereby approve these plans and declare that the making of this improvement will not require the closing to traffic of the Highway and that provisions for the maintenance and safety of traffic will be as set forth on the plans and estimates.

Approved: Wilford B. Robison  
Date: 4-12-48 Division Deputy Director

Approved: \_\_\_\_\_  
Date: \_\_\_\_\_ Chief Engineer, Bureau of Maintenance

Approved: W. H. Logue  
Date: 5-4-48 Chief Engineer, Bureau of Bridges & R.R. Crossings

Approved: George J. Thompson  
Date: 5-11-48 Chief Engineer, Bureau of Location & Design

Approved: Frank M. Williams  
Date: 5-11-48 First Asst. Director & Chief Engineer

Approved: Earl L. Reeb  
Date: 5-11-48 Director of Highways

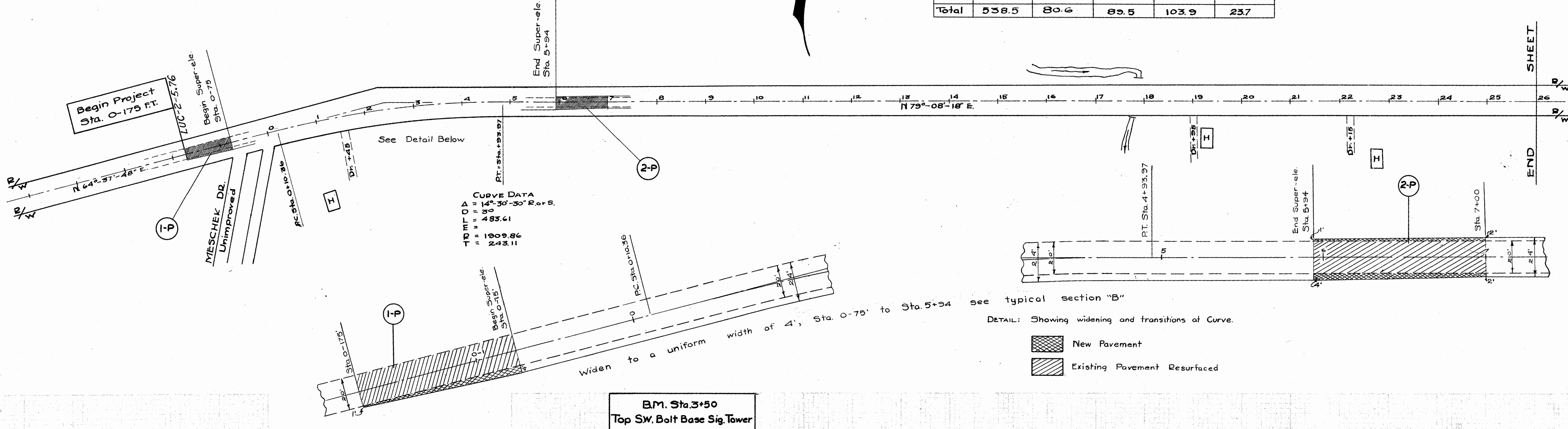
CONSTRUCTION BUREAU  
JUN 28 1955  
GROUND PHOTOLAB

FILE	LUCAS COUNTY-LUC-2-( 5.76 - 9.14)
No.	DATE OF LETTING _____ 19__
	CONTRACT No. _____

QUANTITIES "P"

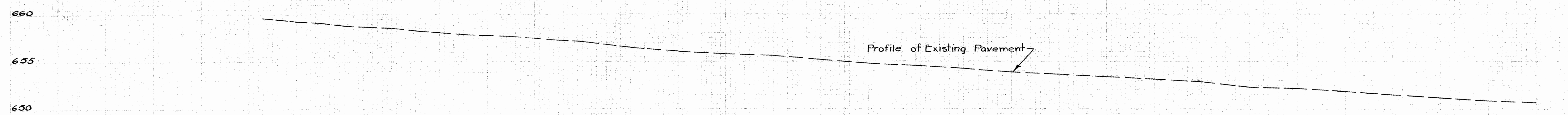
Ref No.	F-35 Sq.Yds.	B-35 Sq.Yds.	B-35-3" Sq.Yds.	B-20 Sq.Yds.	E-1 Cu.Yds.
1-P	250.0	27.7	30.6	352	8
2-P	288.5	52.9	58.9	68.7	15.7
Total	538.5	80.6	89.5	103.9	23.7

TYPICAL SECTION OF ADJOINING PAVEMENT  
 20' Concrete Pavement



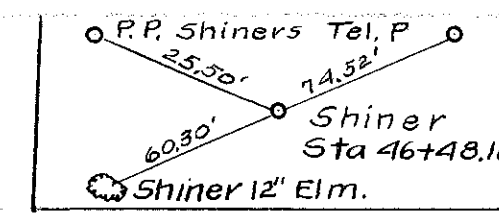
CURVE DATA  
 TRMFOA  
 = 14° 30' 30" R.O.S.  
 = 483.61  
 = 1909.86  
 = 243.11

BM. Sta. 3+50  
 Top SW. Bolt Base Sig. Tower  
 N.Y.C.R.R. Elev. 660.28



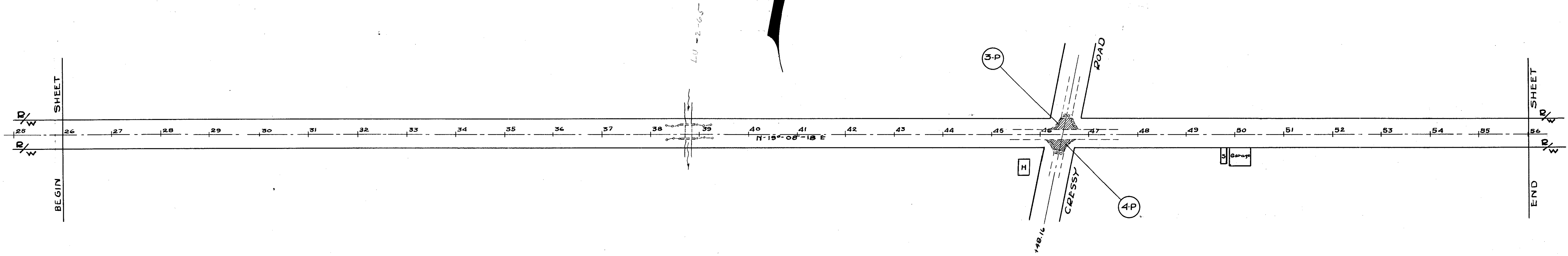
- 0+00.5 659.60
- 0+05.0 659.60
- 0+10.0 659.31
- 0+15.0 659.12
- 0+20.0 658.93
- 0+25.0 658.74
- 0+30.0 658.55
- 0+35.0 658.36
- 0+40.0 658.17
- 0+45.0 657.98
- 0+50.0 657.80
- 0+55.0 657.65
- 0+60.0 657.47
- 0+65.0 657.30
- 0+70.0 657.14
- 0+75.0 656.53
- 0+80.0 656.14
- 0+85.0 655.89
- 0+90.0 655.55
- 0+95.0 655.21
- 1+00.0 654.98
- 1+05.0 654.59
- 1+10.0 654.85
- 1+15.0 655.93
- 1+20.0 653.71
- 1+25.0 653.45
- 1+30.0 653.16
- 1+35.0 652.90
- 1+40.0 652.28
- 1+45.0 652.21
- 1+50.0 651.24
- 1+55.0 651.52
- 1+60.0 651.13
- 1+65.0 650.77
- 1+70.0 650.65

SHEET  
 END



LUCAS COUNTY  
LUC-2-( 5.76- 9.14)

5  
14

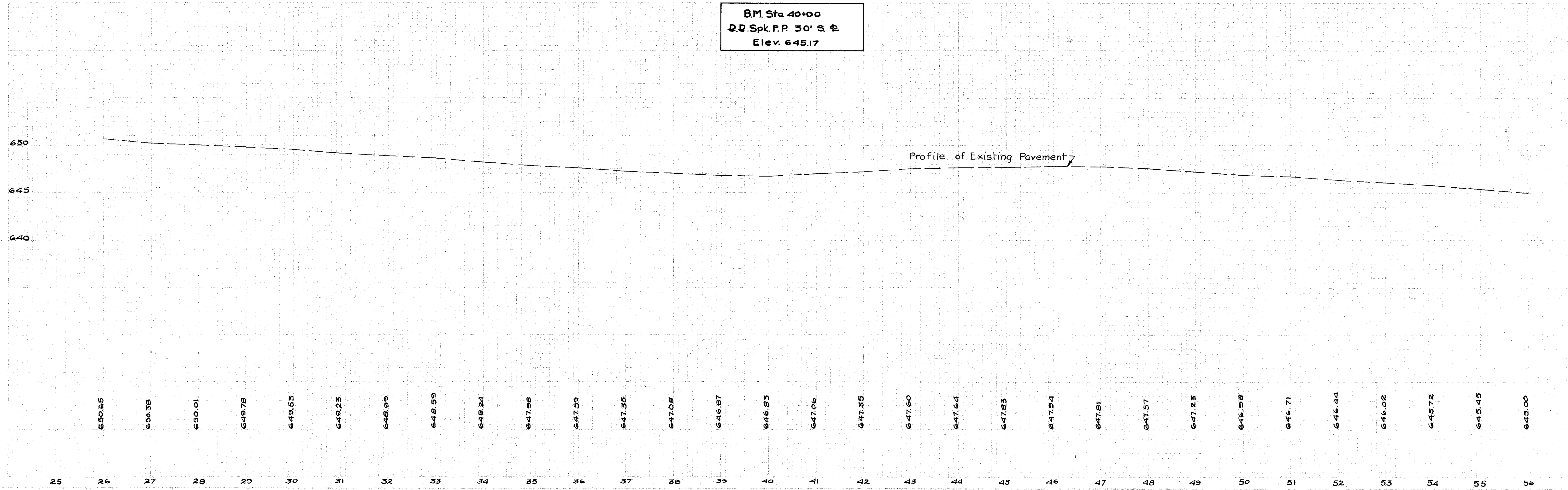


QUANTITIES "P"

Def No.	T-35 Sq. Yds.
3-P	92
4-P	92
Total	184

Existing Pavement to be Resurfaced

B.M. Sta 40+00  
D.D. Spk. P.P. 30' S E  
Elev. 645.17

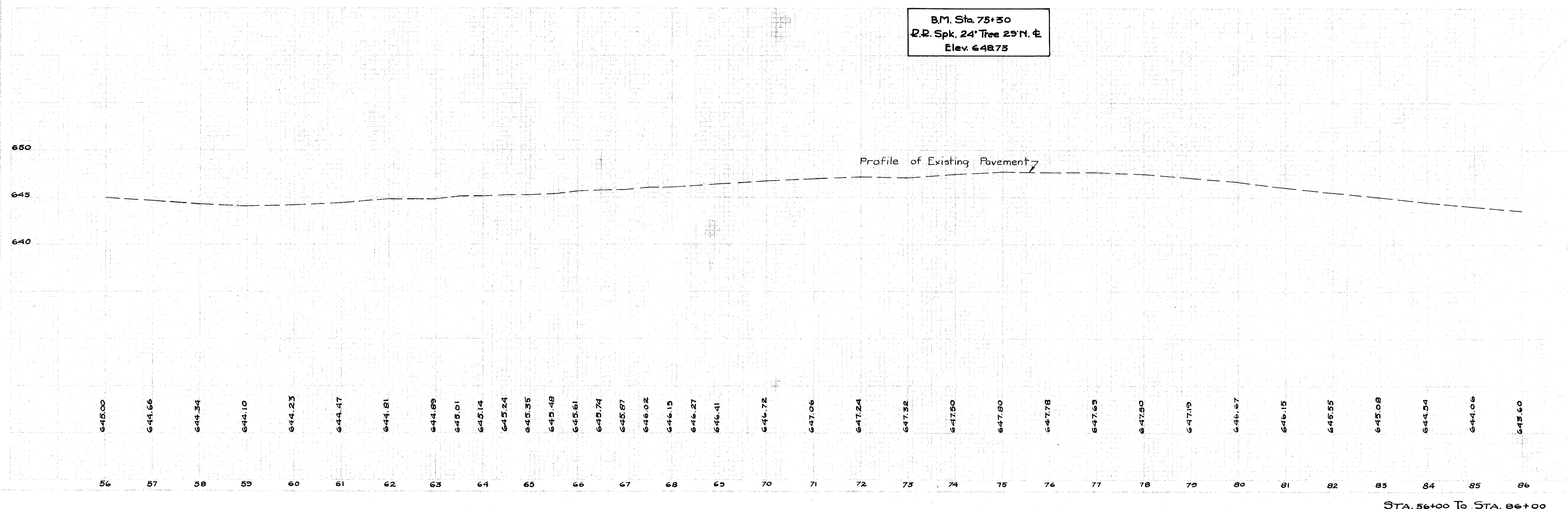
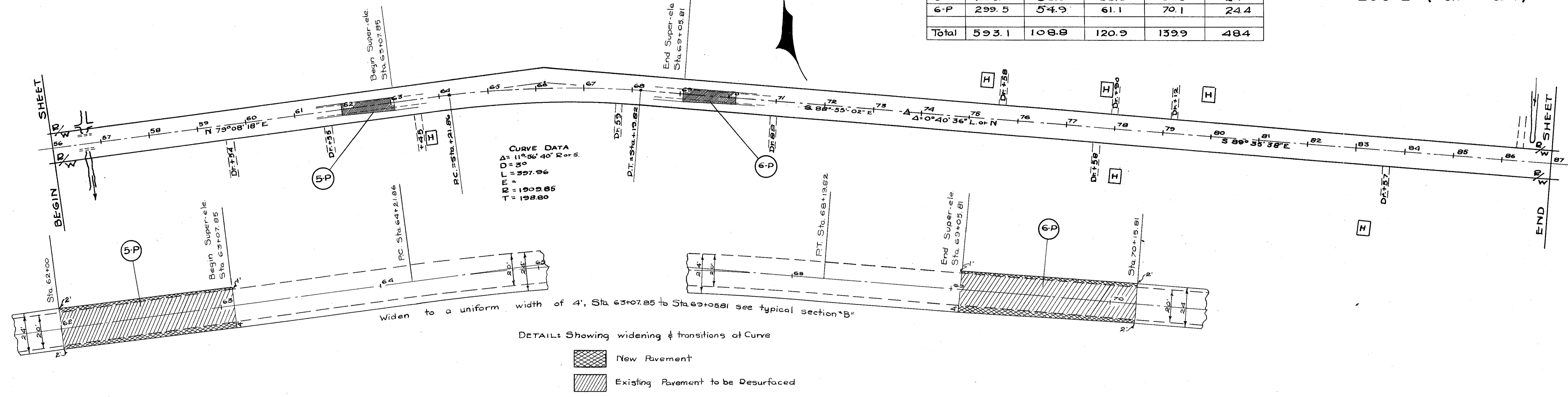


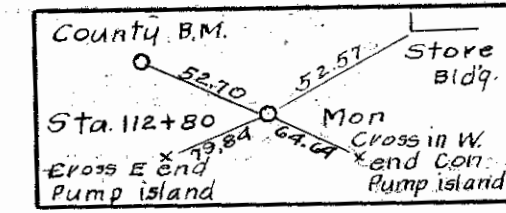
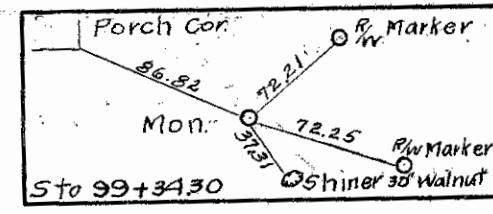
STA. 26+00 To STA. 56+00

1948  
LUCAS COUNTY  
LUC-2-( 5.76- 9.14)

QUANTITIES "P"

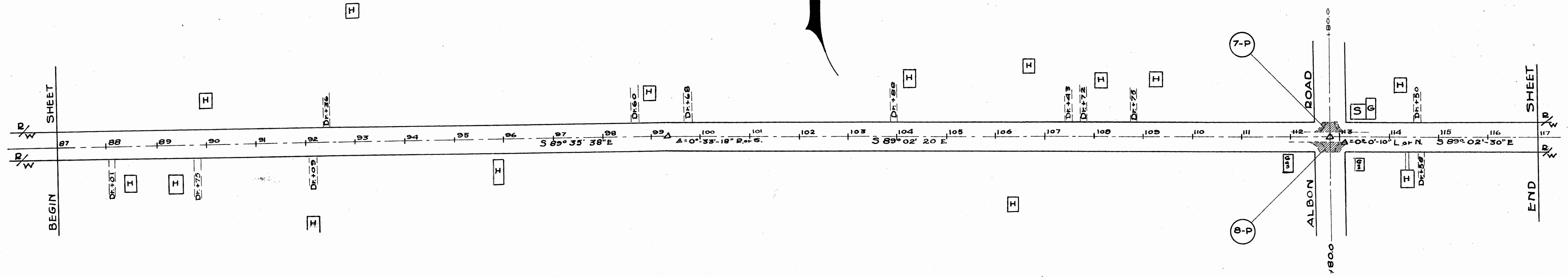
Def. No	T-35 Sq. Yds.	B-35 Sq. Yds.	B-35-3" Sq. Yds.	B-20 Sq. Yds.	E-1 Cu. Yds.
5-P	293.6	53.9	59.8	69.8	24
6-P	299.5	54.9	61.1	70.1	24.4
Total	593.1	108.8	120.9	139.9	48.4





LUCAS COUNTY  
LUC-2-(5.76- 9.14)

7  
14



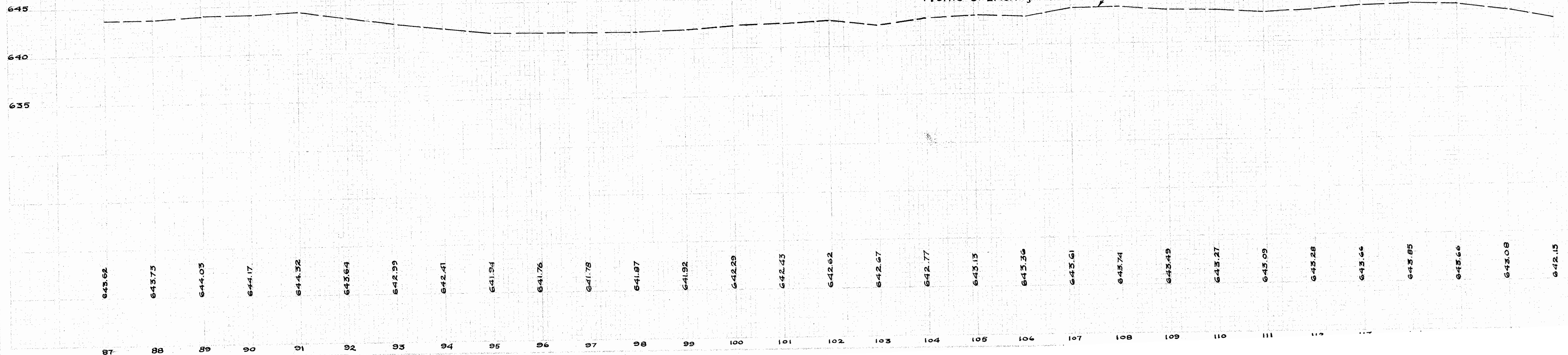
QUANTITIES "P"

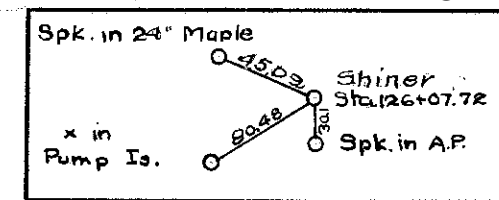
Ref. No.	T-35 Sq. Yds.	
7-P	100.0	70.0
8-P	100.0	70.0
Total	200.0	140.0

Existing Pavement to be Resurfaced.

B.M. Sta. 104+46  
R.R. Spk. in 15' Maple S. E  
Elev. 641.46

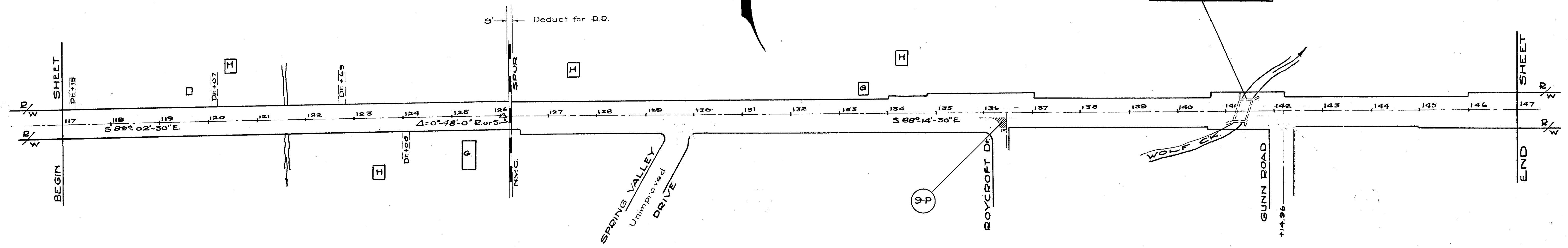
Profile of Existing Pavement





Lu-2-84  
 Type: Concrete Slab.  
 Span: 21' clear  
 Edwy: 44'-0'  
 Built: 1932  
 Load: H-15  
 ± Sta. 141+39

LUCAS COUNTY  
 LUC-2-( 5.76- 9.14)

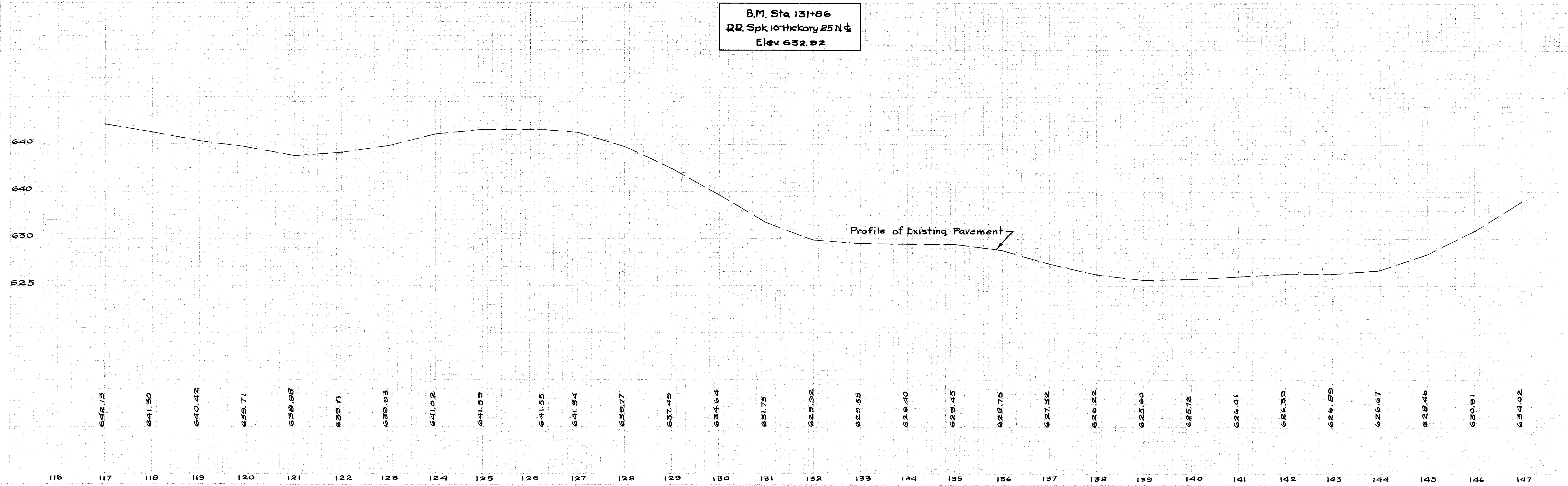


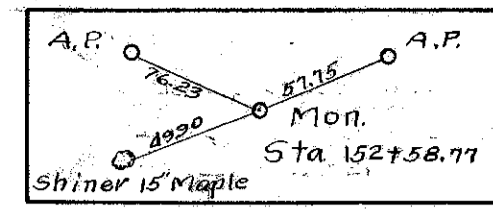
QUANTITIES "P"

Def. No.	F 35 Sq. Yds.	
9-P	36.2	
Total	36.2	

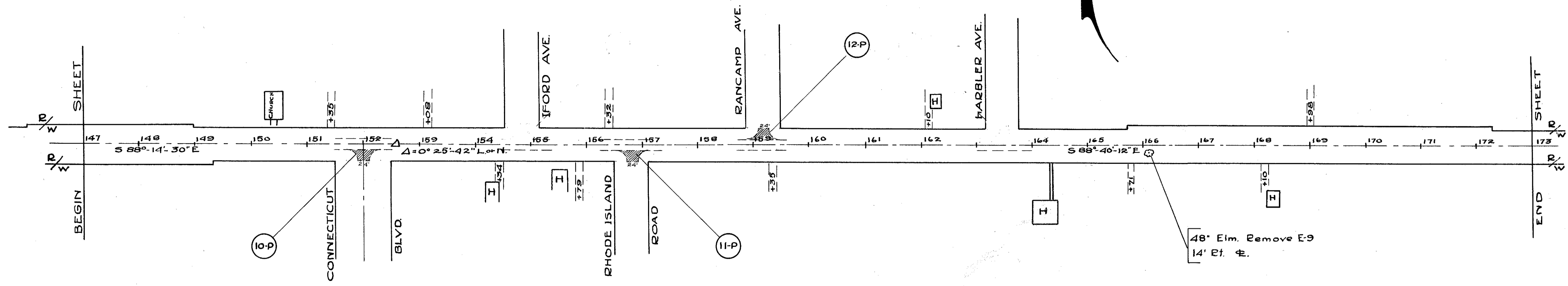
Existing Pavement to be Resurfaced

B.M. Sta. 131+86  
 RR Spk. 10 Hickory 25N ±  
 Elev 652.92





1948  
 LUCAS COUNTY  
 LUC-2-( 576-914)

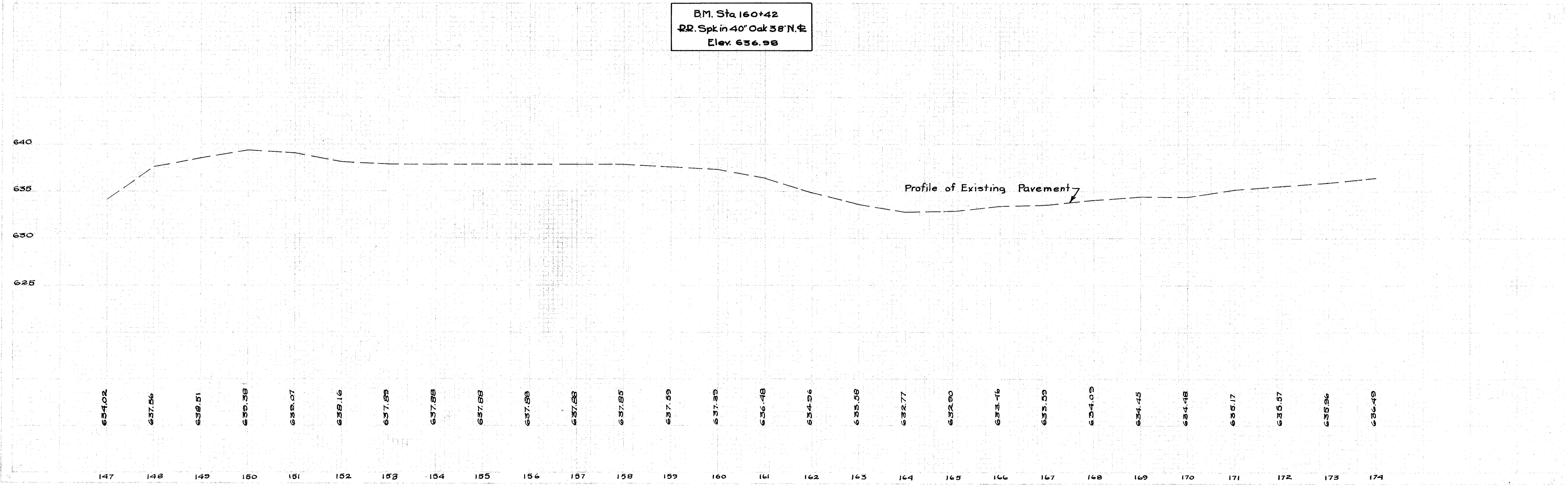


QUANTITIES "P"

Ref. No.	T-35 Sq. Yds.
10-P	72.4
11-P	72.4
12-P	72.4
Total	217.2

Existing Pavement to be Desurfaced

B.M. Sta 160+42  
 RR. Spk in 40' Oak 38' N. E  
 Elev. 636.98

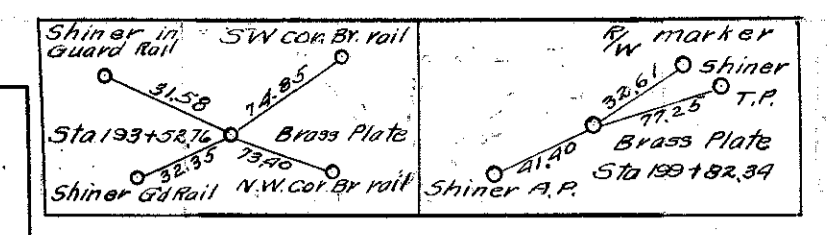
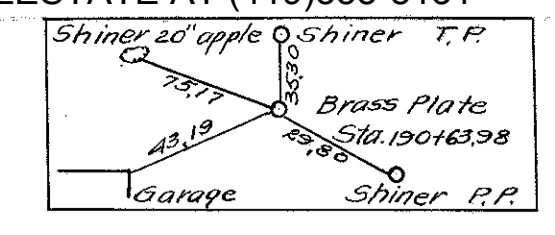
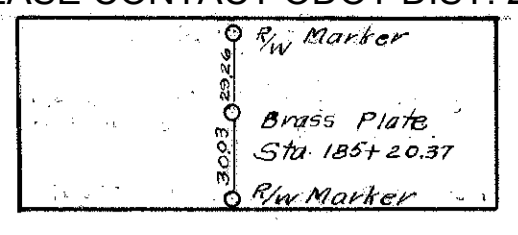


LUCAS COUNTY  
LUC - 2 - (5.76 - 9.14)

Q in Rump Is.  
Stake Sta. 178+83.15  
Tack N.E. cor. of  
814  
Witness Man.  
Note: Equation of Bearing.  
Sta. 178+83.15 S. 88°-45'-12" E Backs  
S. 75°-18'-00" E Ahead.

QUANTITIES "P"

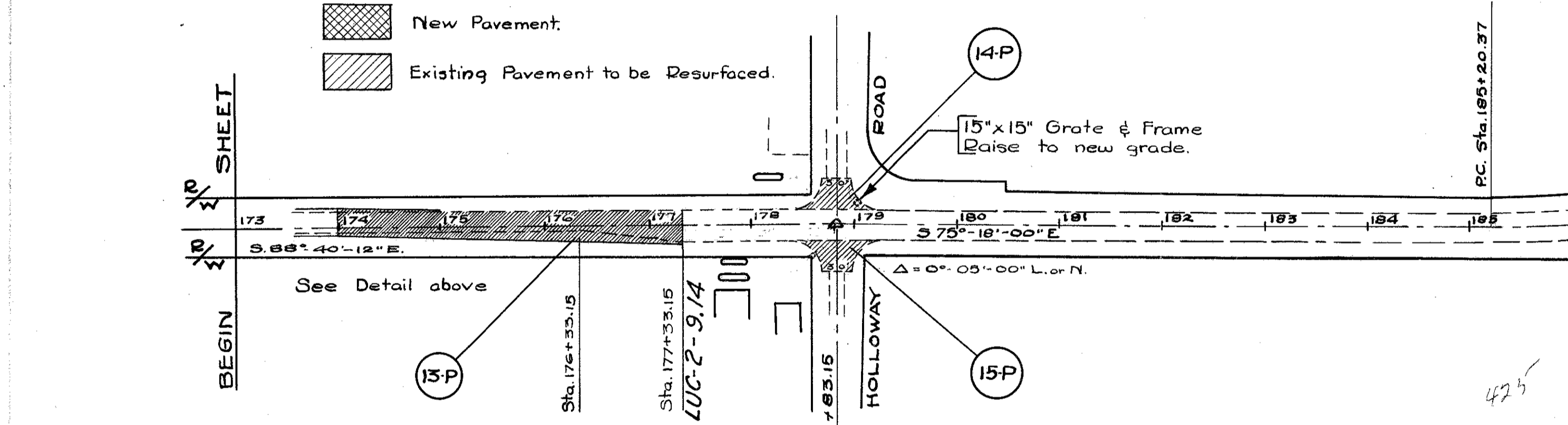
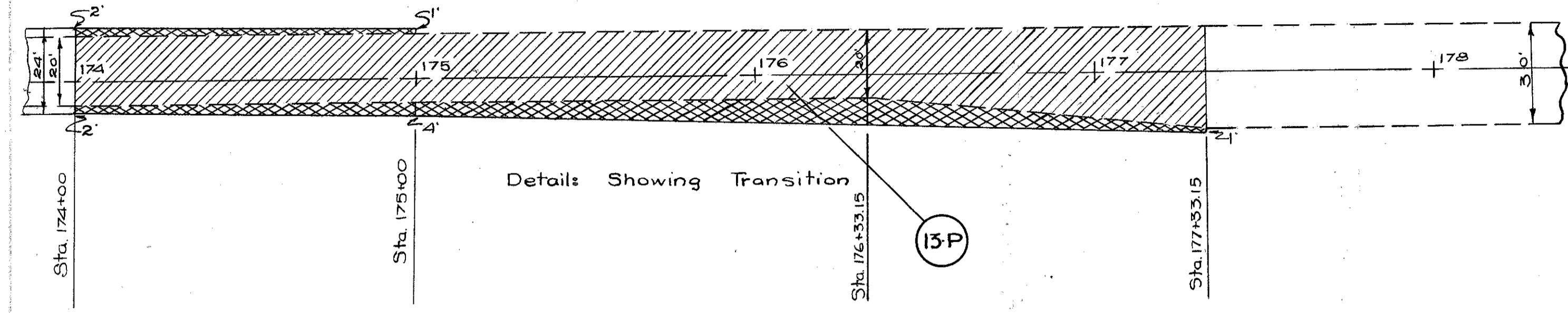
Ref. No.	T-35 Sq. Yds.	B-35 Sq. Yds.	B-35-3" Sq. Yds.	B-20 Sq. Yds.	E-1 Cu. Yds.
13-P	984.5	188.7	201.0	221	49.9
14-P	142.9				
15-P	142.9				
16-P	63.0				
17-P	35.0				
Total	1368.3	188.7	201.0	221	49.9



Br.No. Lu-2-94A  
Reinf. Conc. Beam  
Bridge over Wolf Ck.  
Sta. 194+38  
Roadway 44'-0"  
Clear span 26'-7"  
2-10 1/2" Approach slabs  
16' Long 30' Wide  
Built 1931  
No work required.

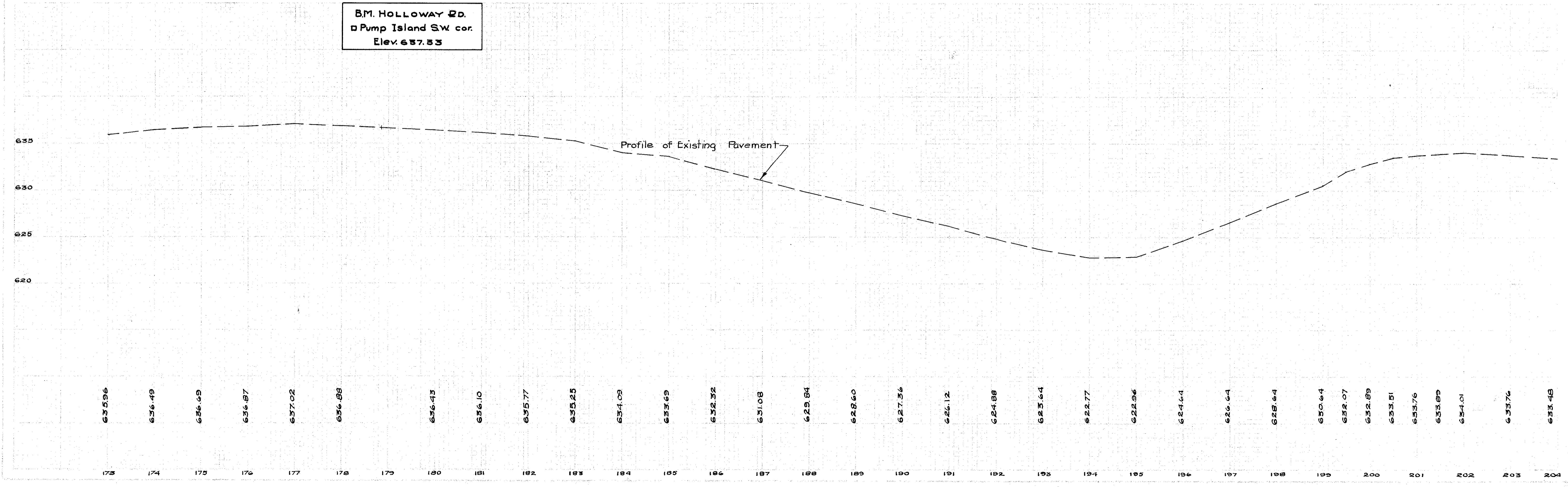
CURVE DATA  
Δ = 23°-23'-00" R or S  
D = 4°  
L = 634.58  
E = 1432.40  
T = 522.59

CURVE DATA  
Δ = 32°-37'-00" L or N  
D = 6°  
L = 543.61  
E = 964.93  
T = 279.39

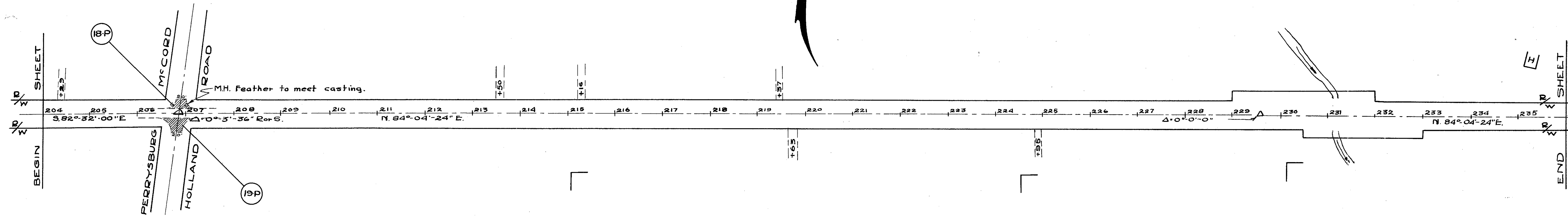
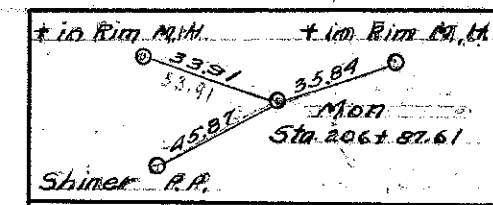


█ New Pavement.  
▨ Existing Pavement to be Resurfaced.

B.M. HOLLOWAY RD.  
□ Pump Island SW cor.  
Elev. 637.53





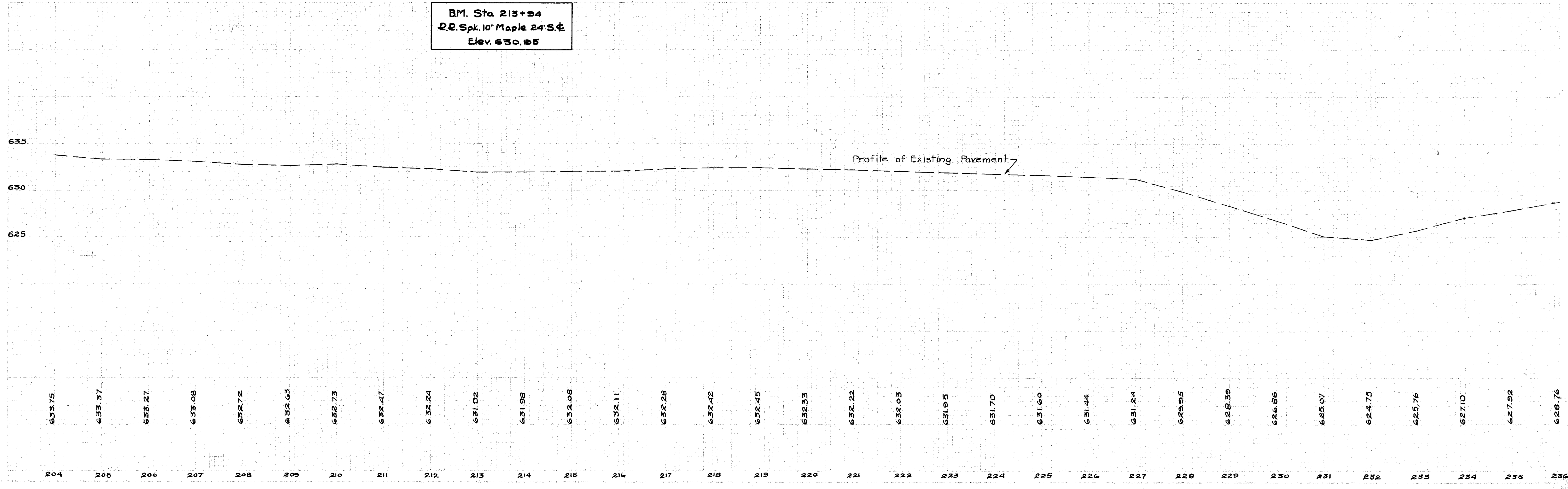


QUANTITIES "P"

Def No.	T-35 Sq. Yds.	
18-P	72.4	
19-P	90.0	
Total	162.4	

Existing Pavement to be Resurfaced

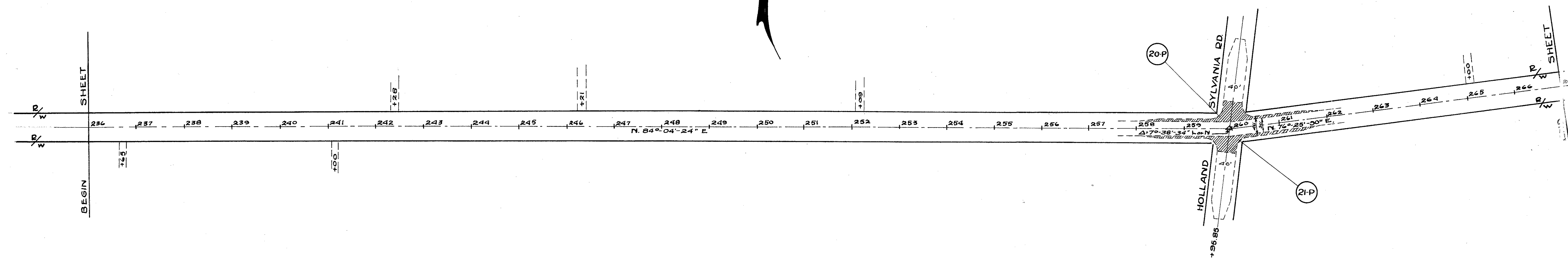
BM. Sta. 213+94  
R.R. Spk. 10' Maple 24'S.E.  
Elev. 630.95



Spl. P.A. 0.36.50  
 Witness mon.  
 Shiner T.P.  
 5215 0  
 3 1955 Plate  
 Sta. 2.50 + 9.5.55  
 Witness mon.

LUCAS COUNTY  
 LUC-2-( 5.76- 9.14)

12  
 14

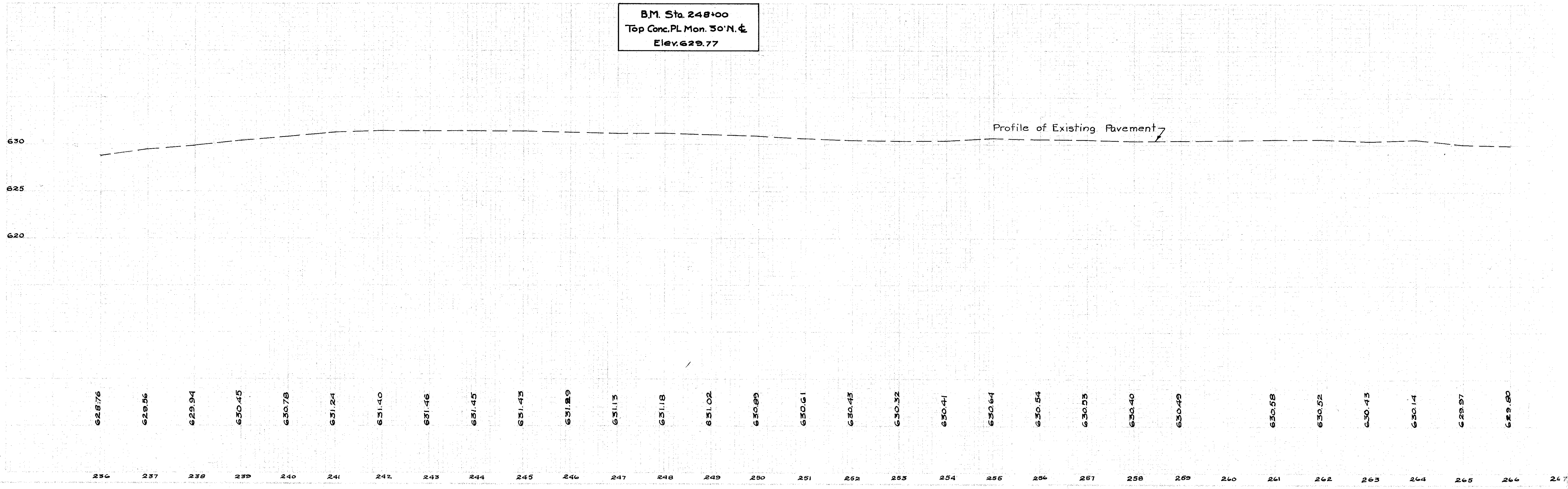


QUANTITIES "P"

Ref. No.	T-35 Sq. Yds.	
20-P	330	
21-P	330	
Total	660	

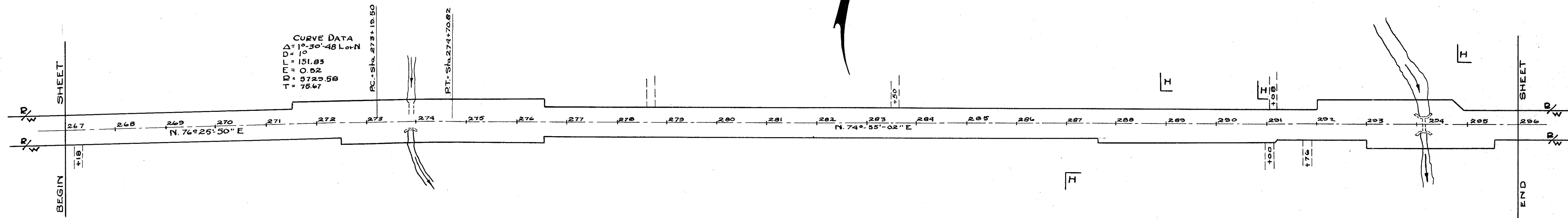
 Existing Pavement to be Resurfaced.

B.M. Sta. 248+00  
 Top Conc. PL Mon. 30' N. &  
 Elev. 629.77

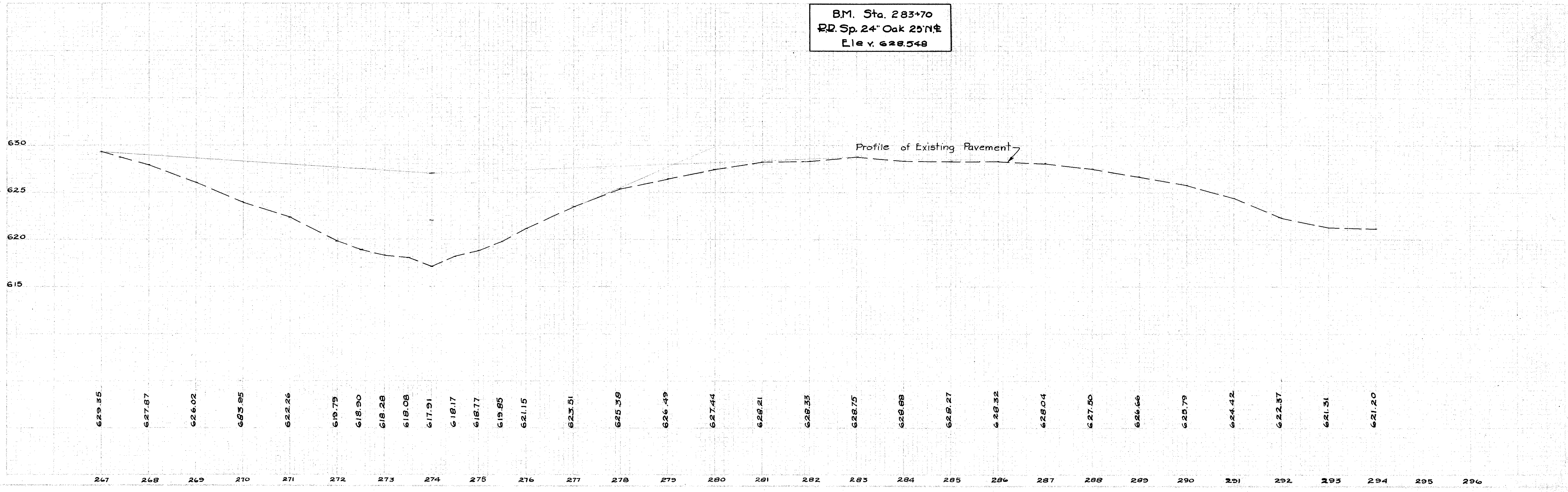


STA. 236+00 TO STA. 267+00

LUCAS COUNTY  
LUC-2-( 576-914)

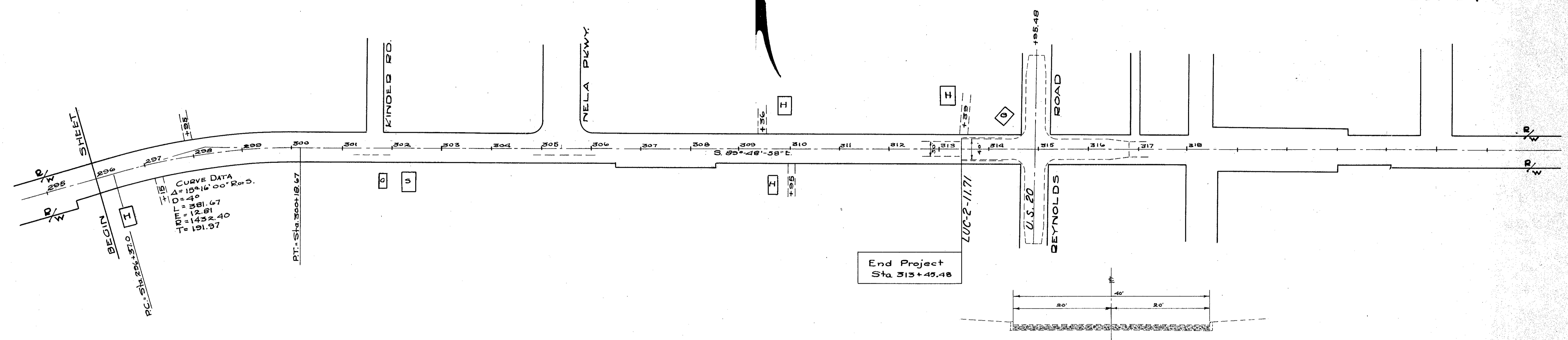


B.M. Sta. 283+70  
 R.D. Sp. 24" Oak 25" N.E.  
 Elev. 628.548

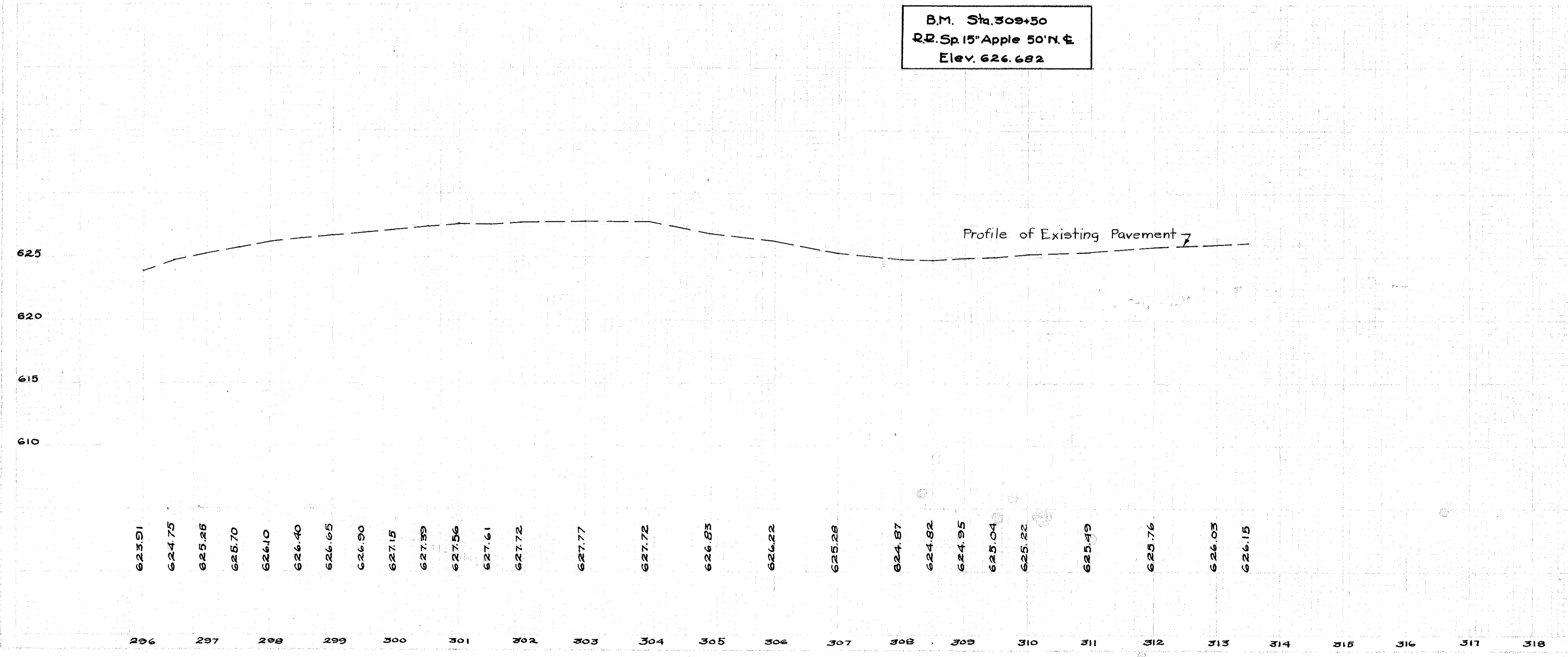


FOR ANY QUESTIONS PLEASE CONTACT ODOT DIST. 2 REALSTATE AT (419)353-8131

02 in 18"  
 Hickory  
 O Iron 5/8" Post  
 P.I. Sta. 298+28.97  
 in box  
 O Shiner in R.P.



B.M. Sta. 309+50  
 R.R. Sp. 15" Apple 50" N. &  
 Elev. 626.682



OS A-6