

STATE OF OHIO
DEPARTMENT OF HIGHWAYS

TOLEDO-WAUSEON ROAD

S.H. (I.C.H) NO. 20 SEC. H 3

LUCAS COUNTY

SPRINGFIELD TOWNSHIP

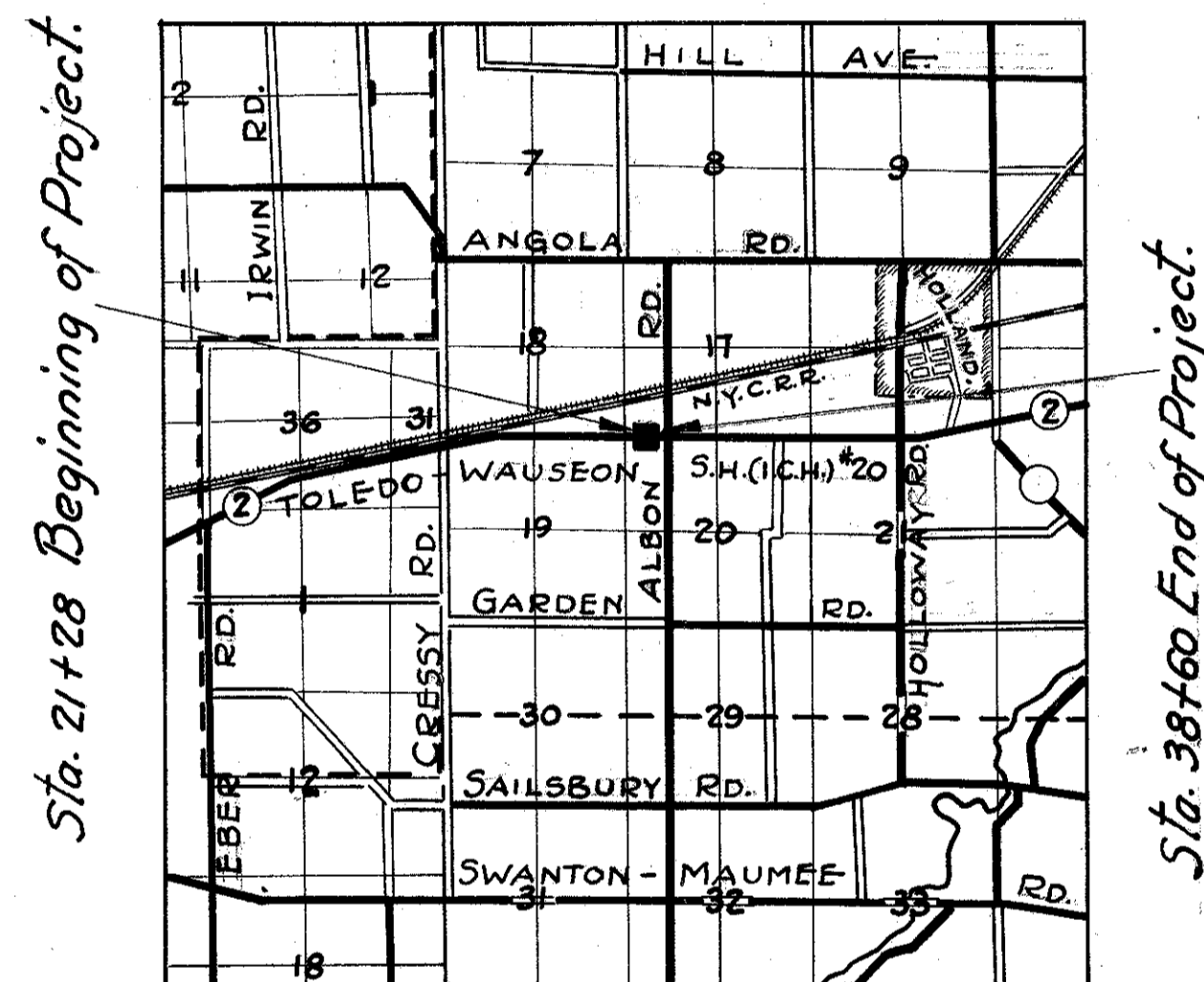
CONVENTIONAL SIGNS.

- County Line. -----
- Township Line. -----
- Section Line. -----
- Center Line. -----
- City or Village Line. -----
- Fence. -----
- Steam Railroad. -----
- Electric Line. -----
- Guard Rail. -----
- Drain Pipe - new. -----
- Drain Pipe - old. -----

The Standard Specifications of the STATE OF OHIO, Department of Highways in force on date of contract will govern this improvement.

I hereby approve these plans and declare that the making of the improvement will not require the closing to traffic of the highway.

M & R.



LOCATION PLAN

SCALE of MILES



PORTION TO BE IMPROVED

We the Commissioners of Lucas County here by approve these plans and certify that the right of way 60 feet wide is available for the construction, maintenance and repair of the above highway.

Date.....County Commissioners.

SCALES.

- Plan 1" = 50'
- Profile - Hor. 1" = 50'
- Profile - Vert. 1" = 5'
- Cross Sections. 1" = 5'

INDEX OF SHEETS.

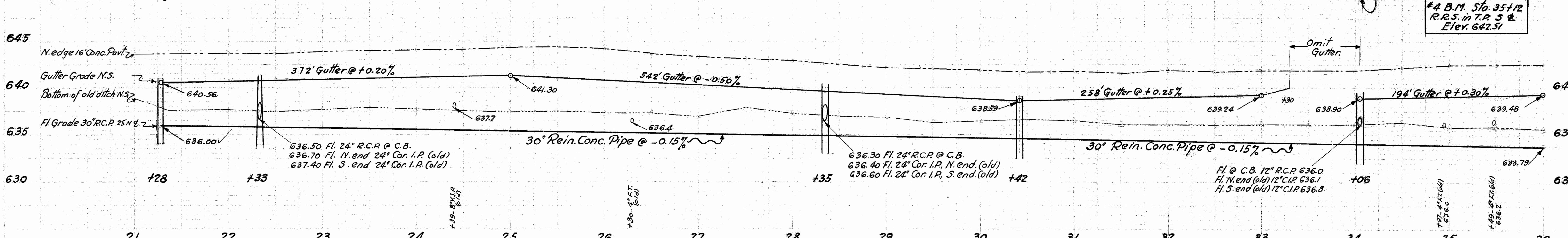
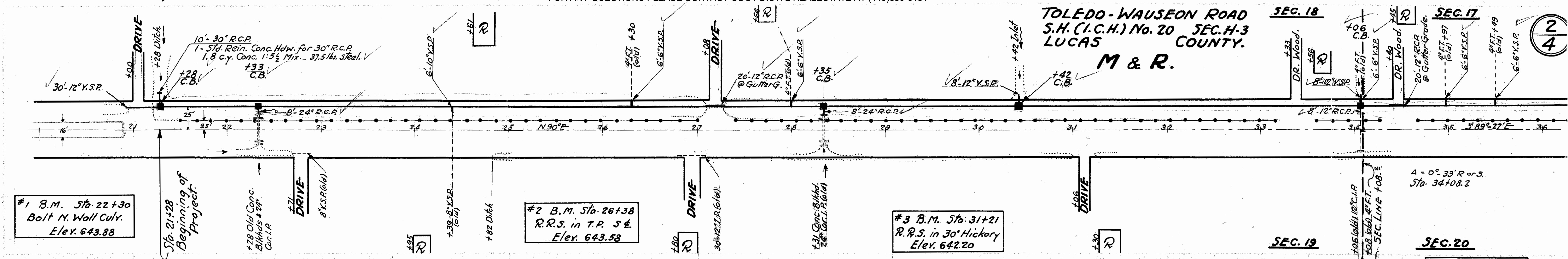
- Title Page - 1.
- Plans & Profile - 2.
- Cross Sections. - 3.
- Summary Sheet. 4.

- Approved: _____
Date: _____ Resident District Deputy Director.
- Approved: *John D. Fuller*
Date: 9-18-29 Resident Division Deputy Director.
- Approved: *E. S. Bright*
Date: 1-24-31 Chief Engineer Bureau of Construction.
- Approved: *Hyde R. Hadden*
Date: 2-22-32 Chief Engineer Bureau of Maintenance.
- Approved: _____
Date: _____ Chief Engineer Bureau of Bridges.
- Approved: *W. H. ...*
Date: 9-24-29 Chief Engineer.
- Approved: *Robert M. ...*
Date: 9-24-29 Director of Highways.
- Approved: _____
Date: _____ District Engineer Bureau of Public Roads.
- Approved: _____
Date: _____ Chief Engineer Bureau of Public Roads.
- Approved: _____
Date: _____ Chief of Bureau.



TOLEDO-WAUSEON ROAD
S.H. (I.C.H.) No. 20 SEC. H-3
LUCAS COUNTY.
M & R.

2
4



DRAINAGE NOTES.

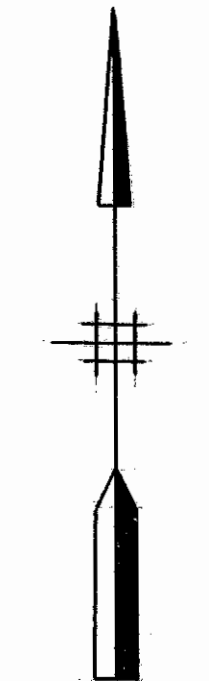
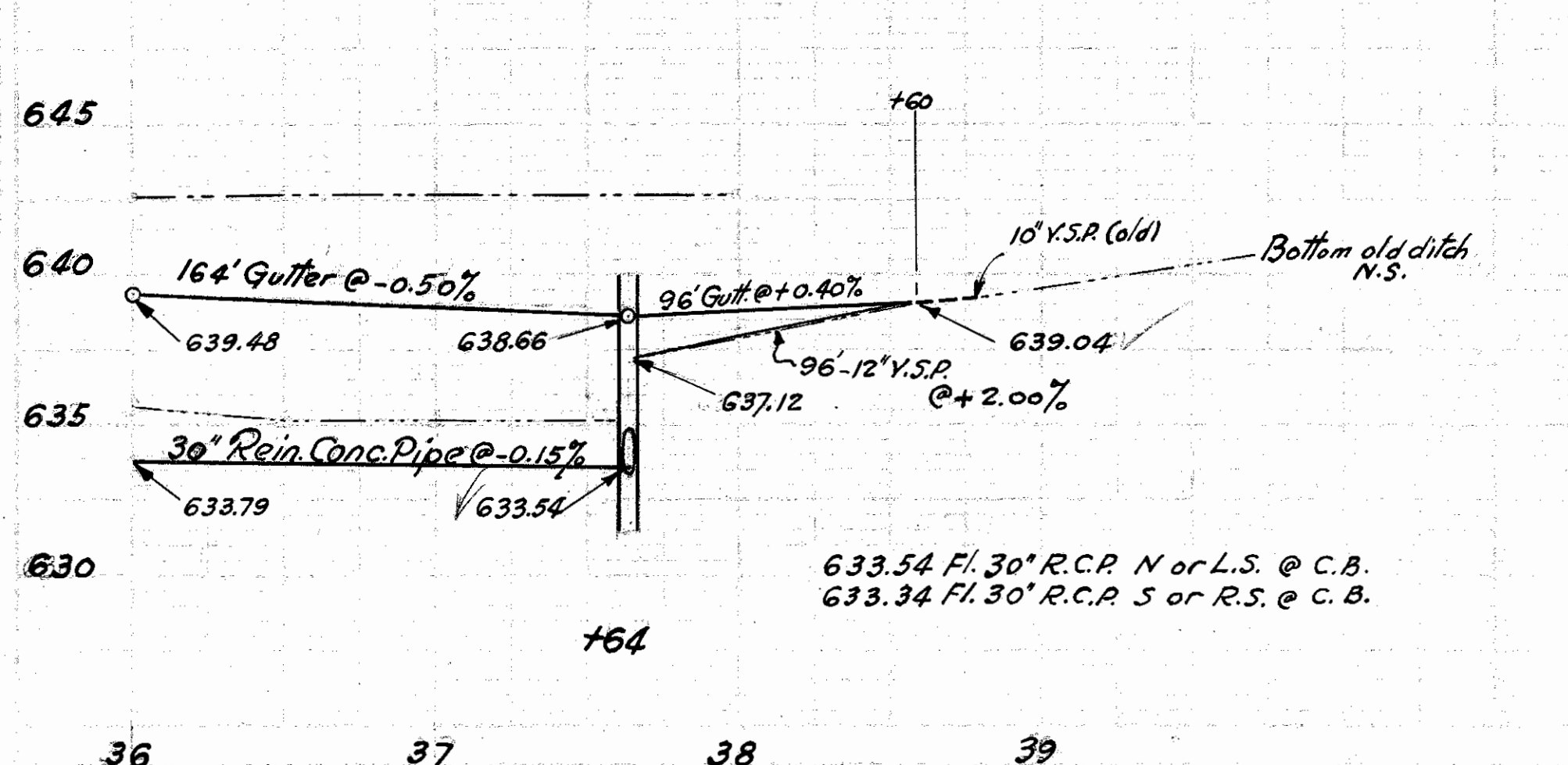
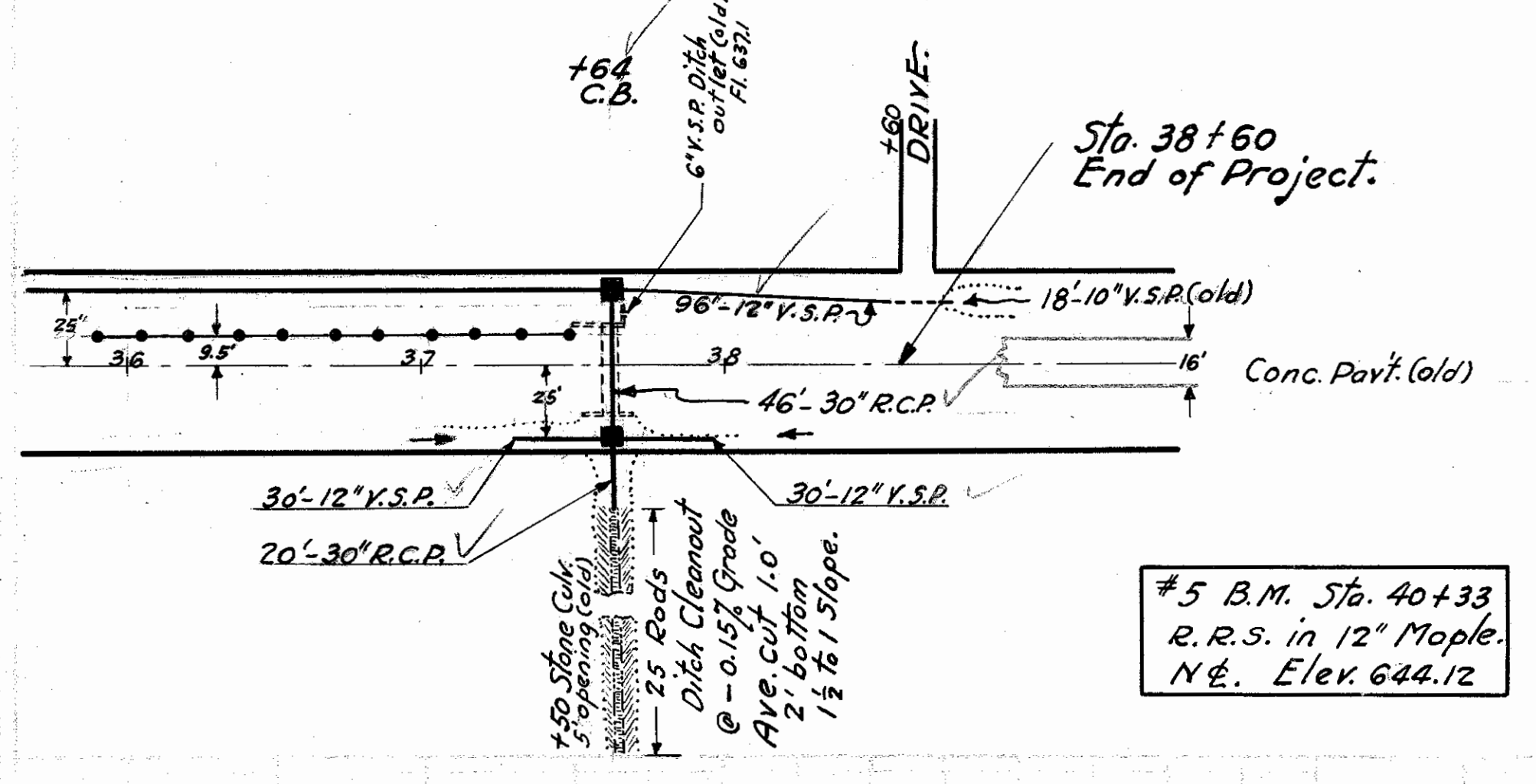
- Sta. 21+28 Const. 1 Std. No. 2 Conc. C.B. Mod. (4.5'x4.5' inside dims.)
Lay 10'-30" Rein. Conc. Pipe North & Const. 1-Std. Rein. Conc. Hdw. for 30" R.C.P. 1.8 cy. 1:5 1/2 Conc., 37.5 lbs. Steel, 1 cy. Exc.
Lay 30'-12" V.S.P. West. L.S.
- Sta. 21+28 to 37+64 - Lay 1636'-30" Rein. Conc. Pipe, L.S.
- Sta. 22+33 Const. 1-Std. No. 2 Conc. C.B. Mod. (4.5'x4.5' inside dims.)
Lay 8'-24" Rein. Conc. Pipe South connecting old 24" Cor. I.P., L.S.
- Sta. 28+35 Const. 1-Std. No. 2 Conc. C.B. Mod. (4.5'x4.5' inside dims.)
Lay 8'-24" Rein. Conc. Pipe South connecting old 24" Cor. I.P., L.S.
- Sta. 30+42 Const. 1-Std. No. 2 Conc. C.B. Mod. (4.5'x4.5' inside dims.)
Lay 8'-12" V.S.P. North. L.S.
- Sta. 34+06 Const. 1-Std. No. 2 Conc. C.B. Mod. (4.5'x4.5' inside dims.)
Lay 8'-12" Rein. Conc. Pipe South connecting old 12" C.I.P.
Lay 8'-12" V.S.P. North, L.S.
- Sta. 37+64 Const. 2-Std. No. 2 Conc. C.B.'s Mod. (4.5'x4.5' inside dims.)
Lay 46'-30" Rein. Conc. Pipe from C.B., L.S. to C.B., R.S. thro old 5'x5 1/2' culvert.
Lay 20'-30" Rein. Conc. Pipe South from C.B., R.S.
Lay 30'-12" V.S.P. West from C.B., R.S.
Lay 30'-12" V.S.P. East from C.B., R.S.
- Clean out 25 Rods of ditch South from outlet of 30" Rein. Conc. Pipe @ 0.15% grade.
- Sta. 37+64 to 38+60 - Lay 96'-12" V.S.P., L.S.

TILE CONNECTIONS.

- Sta. 24+39 Lay 6'-10" V.S.P., L.S.
- Sta. 26+30 Lay 6'-6" V.S.P., L.S.
- Sta. 28+00 Lay 6'-6" V.S.P., L.S.
- Sta. 34+06 Lay 6'-6" V.S.P., L.S.
- Sta. 34+97 Lay 6'-6" V.S.P., L.S.
- Sta. 35+49 Lay 6'-6" V.S.P., L.S.

PIPE FOR PRIVATE DRIVES.

- Sta. 27+08 - Lay 20'-12" Rein. Conc. Pipe - under drive at Gutter grade.
- Sta. 34+40 - Lay 20'-12" Rein. Conc. Pipe - under drive at Gutter grade.



H. Morgan
Snell