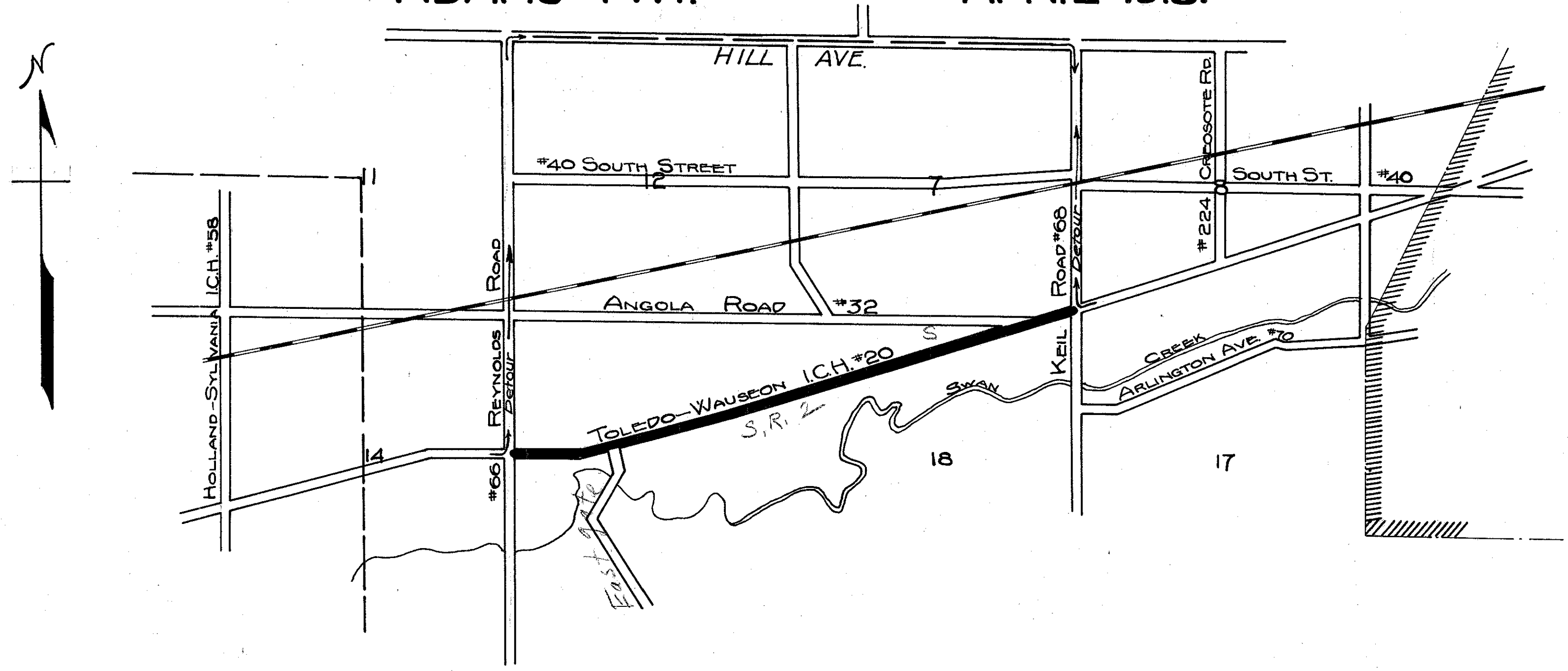


INDEX

Title page	p. 1
Plans & Profiles	p. 2-3
Typical Cross Section	p. 3
Cross Sections	p. 4-5
Structural Plans	p. 3

STATE HIGHWAY DEPARTMENT OF OHIO
 BUREAU OF CONSTRUCTION
SEC. J - TOLEDO-WAUSEON ROAD
 I.C.H. No 20 PET. No 3204
LUCAS COUNTY
 ADAMS TWP. APRIL 1918.



LOCATION PLAN
 SCALE - 3" = 1 Mile

PORTION TO BE IMPROVED
 IMPROVED DETOUR ROAD

CONVENTIONAL SIGNS

State Line	
County Line	
Township Line	
Section Line	
Property Line	
Center Line	
City or Village Line	
Steam Railroad	
Electric Line	

SCALES

Plan	1" = 100'
Profile (Vertical)	1" = 10'
Profile (Horizontal)	1" = 100'
Cross Sections	1" = 5'

Approved:
 Date 5-10-1918 County Surveyor

We, the Commissioners of Lucas County, hereby approve these plans and certify that the right-of-way is available for the construction of the above highway

Signed:
 C. M. Coan

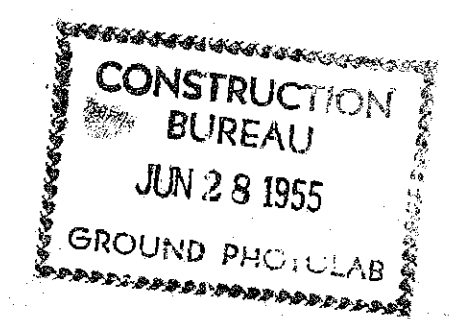
Date JUNE 28, 1918. County Commissioners

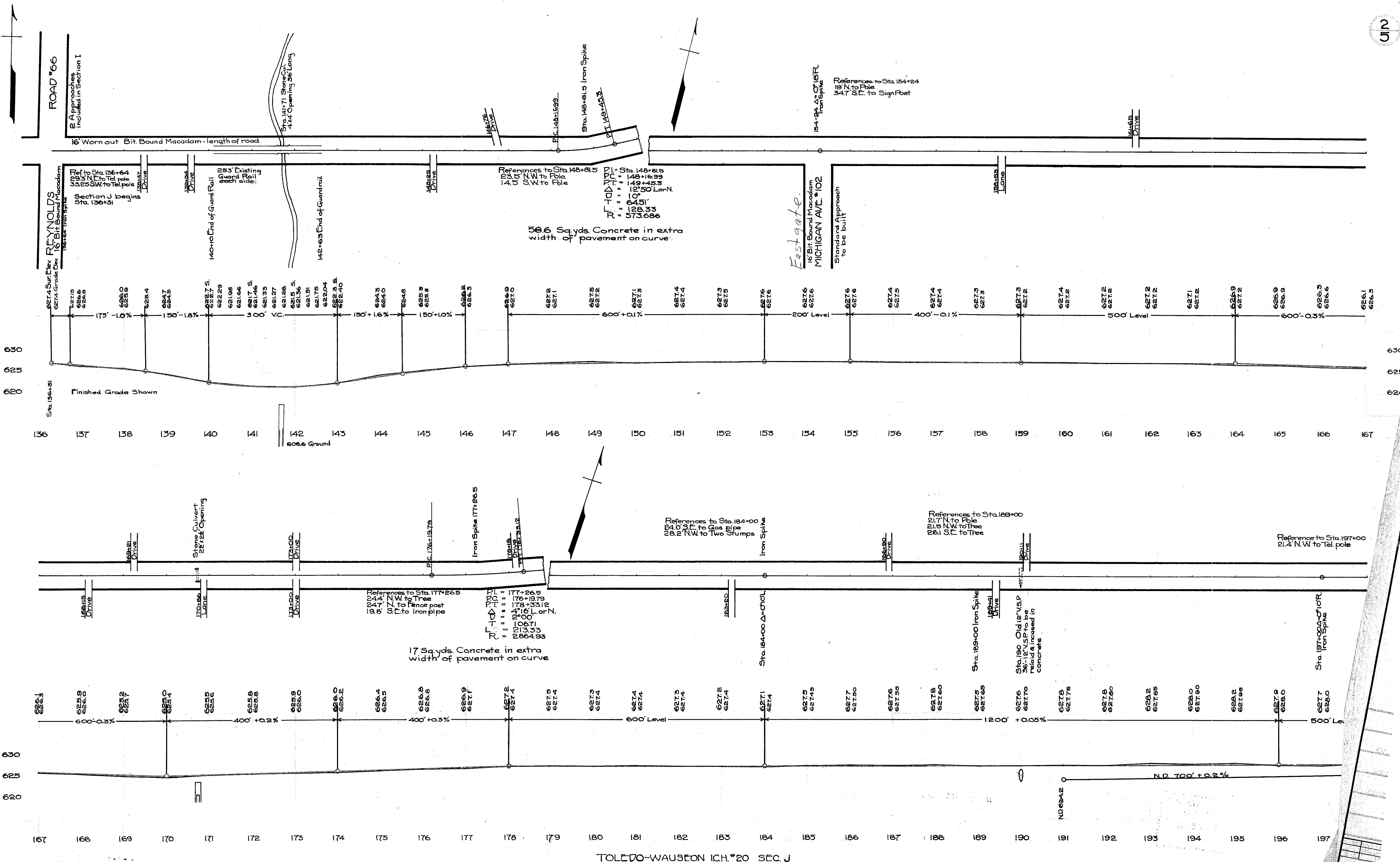
I hereby approve these plans and declare that the making of the improvement will require the closing to traffic of the highway and that the detours will be indicated by signs as shown on the plans and estimates

Approved:
 Date 5/12/18 Division Engineer

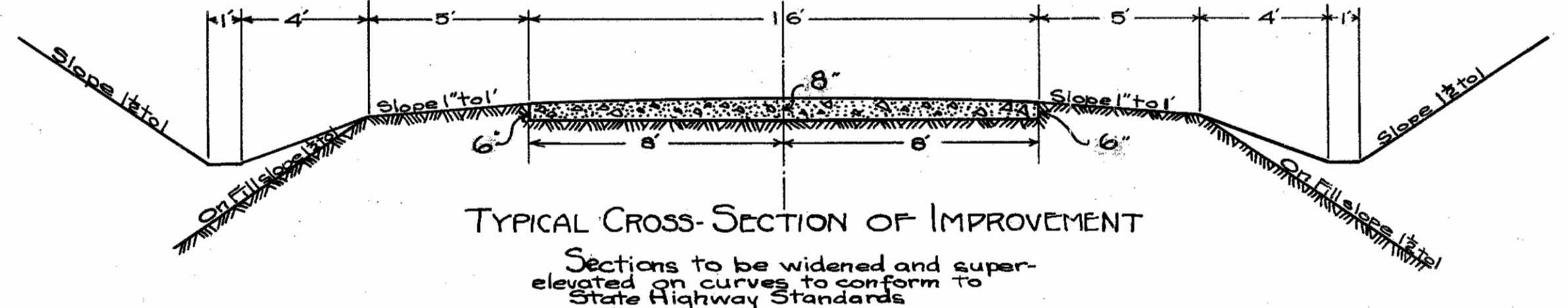
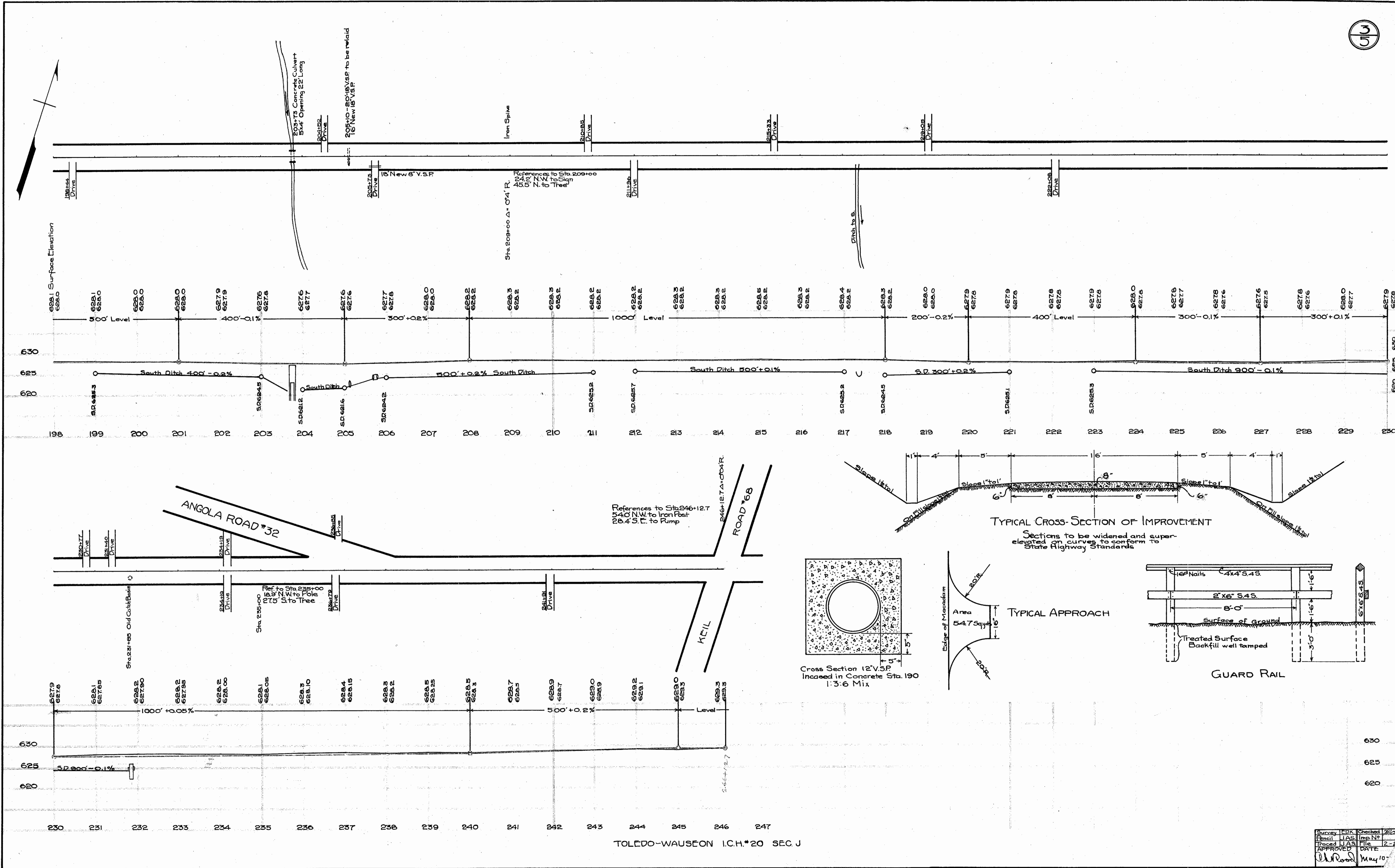
Approved:
 Date 5/24/18 Chief Highway Engineer

Approved:
 Date 6-24-18 State Highway Com.



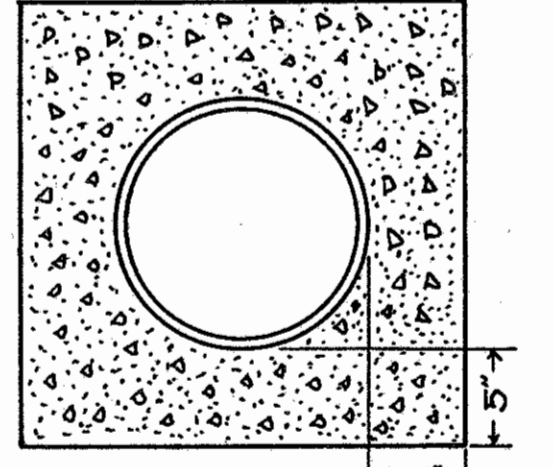


FOR ANY QUESTIONS PLEASE CONTACT ODOT DIST. 2 REALSTATE AT (419)353-8131

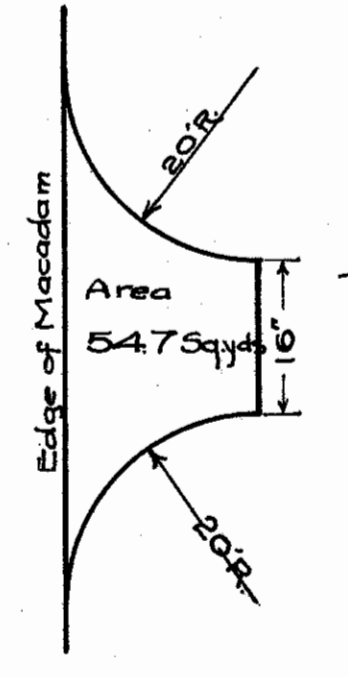


TYPICAL CROSS-SECTION OF IMPROVEMENT

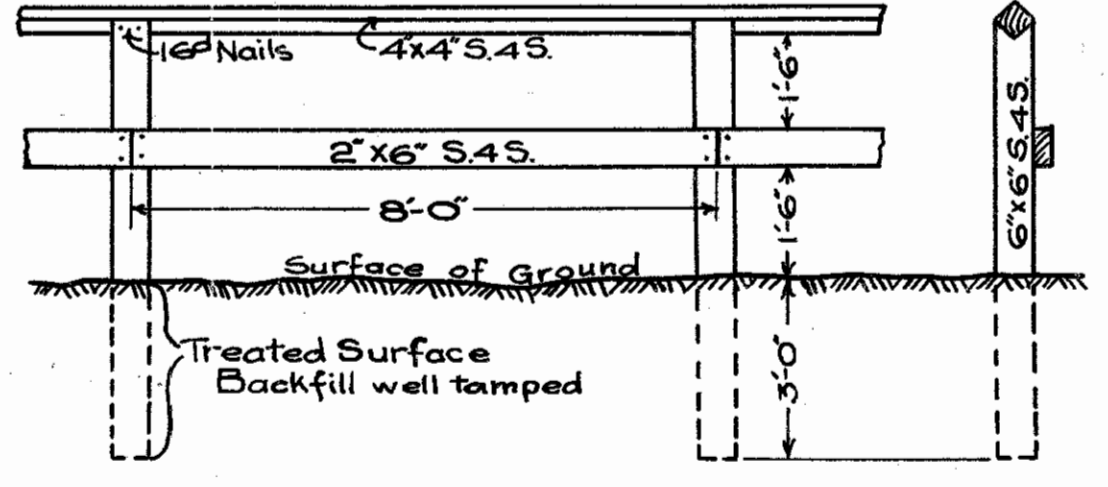
Sections to be widened and super-elevated on curves to conform to State Highway Standards



Cross Section 12" V. 3P
Increased in Concrete Sta. 190
1:3:6 Mix



TYPICAL APPROACH



GUARD RAIL

TOLEDO-WAUSEON I.C.H.#20 SEC J

Survey	EDK	Checked	2/22
Plan	JAS	Imp	NP
Trace	JAS	File	2-7
APPROVED	DATE		
<i>DR</i>	May 10		