

# STATE OF OHIO DEPARTMENT OF TRANSPORTATION LUC. S.R. 2 - 18.68 ANTHONY WAYNE BRIDGE MEDIAN BRIDGE SAFETY IMPROVEMENT CITY OF TOLEDO - LUCAS COUNTY

ISSUE 1

LUC-2-18.68 HHS, TOLEDO ANTHONY WAYNE BRIDGE MEDIAN	OHIO FHWA REGION 5 FEDERAL PROJECT
HHS-79(B) & ISSUE 1	

RECEIVED  
JUL 30 1977

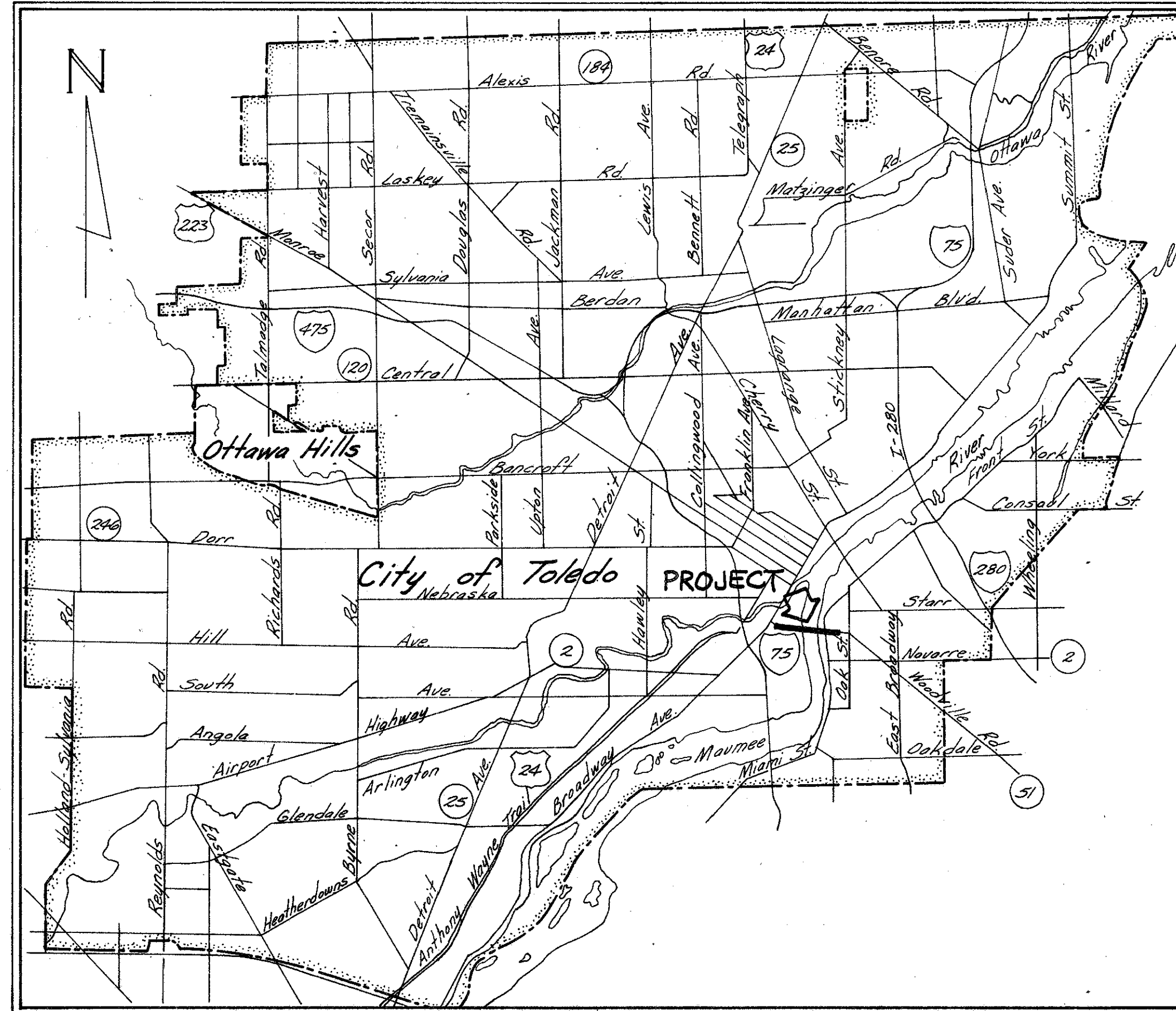
I, the duly authorized Contractual Officer, of the City of Toledo, do hereby approve these plans and certify that the necessary right of way is available. I do hereby agree, for and in behalf of said City, to maintain the project in a manner satisfactory to the Director of Transportation, State of Ohio, or his duly authorized representatives and will make ample provisions each year for such maintenance and repair. Done under authority of Sections 123.01, 559.02 and 559.02 et. seq. of the Revised Code of Ohio.

Date: 5/11/77

Walter Kane  
City of Toledo - City Manager

### CONVENTIONAL SIGNS

County Line	-----	Limited Access (only)	----- LA
Township Line	-----	Right of Way (only)	----- RW
Section Line	-----	Limited Access & Right of Way	----- LA & RW
Corporation Line	----- or -----	Existing Right of Way	-----
Fence Line (existing)	-x-x-	Property Line	--- (in existing fence) ---x-x---
Center Line	352 -----	Railroad	----- or -----
Trees, Stumps R, (to be removed)	⊗ ⊗	Guardrail (existing)	-o-o-
Utility Poles: Telephone, Power, Light	⊕ ⊕	Guardrail (proposed)	-o-o-



LOCATION MAP

SCALE IN MILES  
0 1/2 1 2

### 1977 SPECIFICATIONS

The standard specifications of the State of Ohio, Department of Transportation, including changes and supplemental specifications listed in the proposal shall govern this improvement.

The right of way for this improvement will be provided by the State of Ohio.

I hereby approve these plans and declare that the making of this improvement will not require the closing of the highway to traffic and that provisions for the maintenance and safety of traffic will be as set forth on the plans and estimates.

### INDEX OF SHEETS

Title Sheet	1
Typical Sections	2
General Notes	3
Maintenance of Traffic	3A
Closing Traffic Lanes Details	3B
General Summary & Sub-summaries	4
Plan & Profile	5-9
Expansion Joint Details	10-15
Precast Concrete Barrier Detail	16

Approved: James L. Andrews  
Date 5-19-77 District Deputy Director of Transportation

Approved: Robert B. Pfeiffer  
Date 8/23/77 Engineer, Bureau of Bridges and Structural Design

Approved: George P. McClain  
Date 8-25-77 Chief Engineer, Operations

Approved: David L. Wein  
Date 11-15-77 Director, Department of Transportation

SUPPLEMENTAL SPECIFICATIONS	
55 836	3-12-75

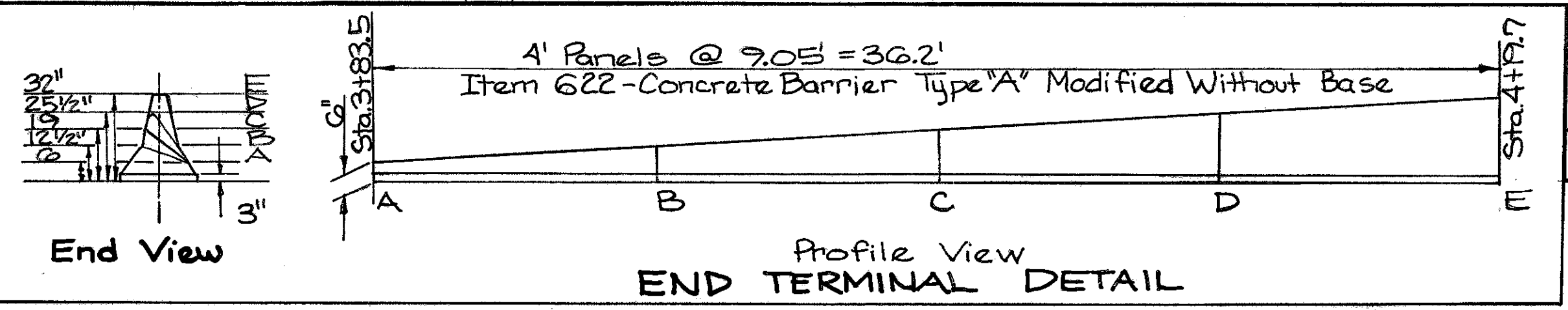
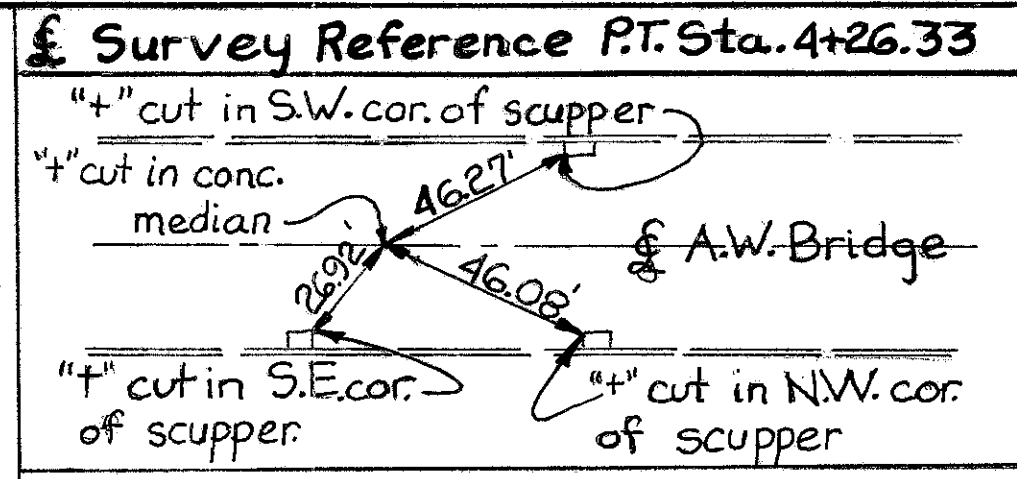
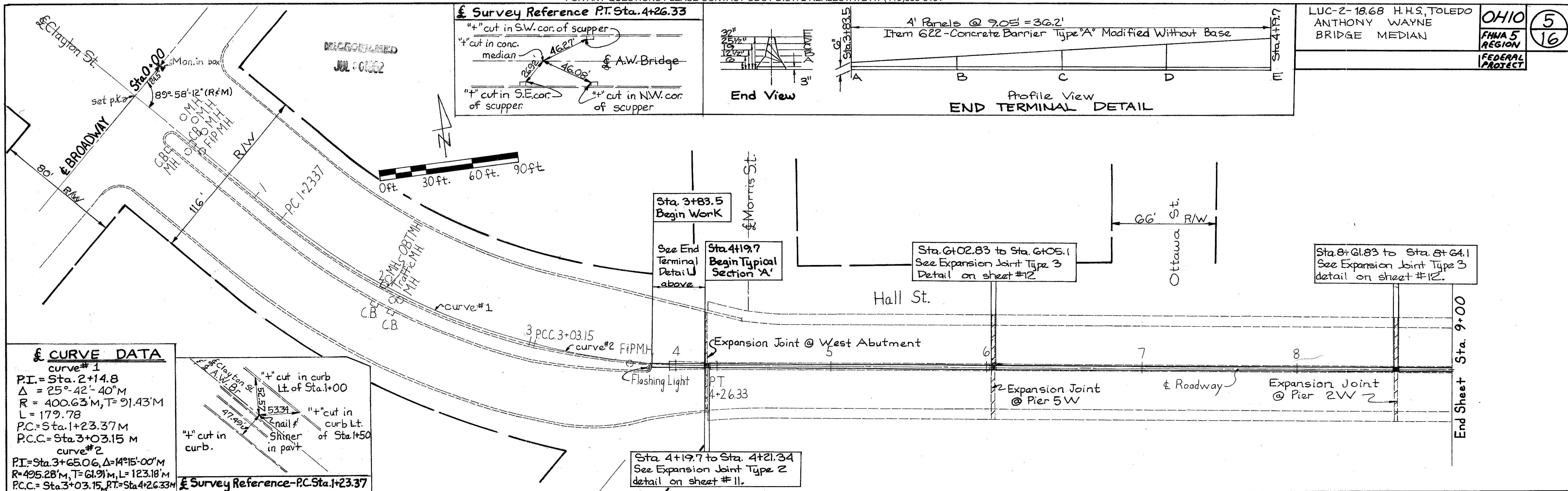
### LINE DATA

Project Length: 0.00 Ft. or 0.000 Miles  
Work Length: Sta. 3+83.50 to Sta. 41+27.66 =  
3744.16 Ft. or 0.709 Miles

SUPPLEMENTAL PRINTS OF STANDARD CONSTRUCTION DRAWINGS				
MC-3	6-1-73			
MC-9	1-1-74			

DEPARTMENT OF TRANSPORTATION FEDERAL HIGHWAY ADMINISTRATION	
APPROVED :	
DIVISION ADMINISTRATOR	DATE

Project: \_\_\_\_\_ Contract No. \_\_\_\_\_  
Date of Letting: \_\_\_\_\_



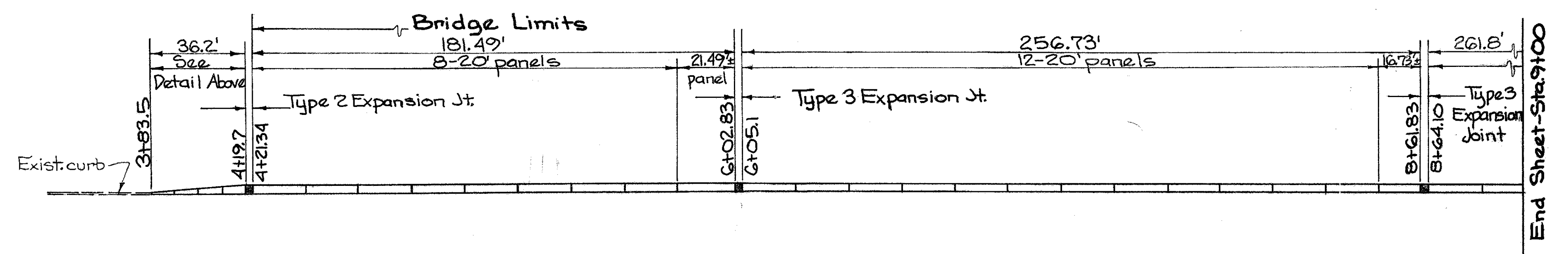
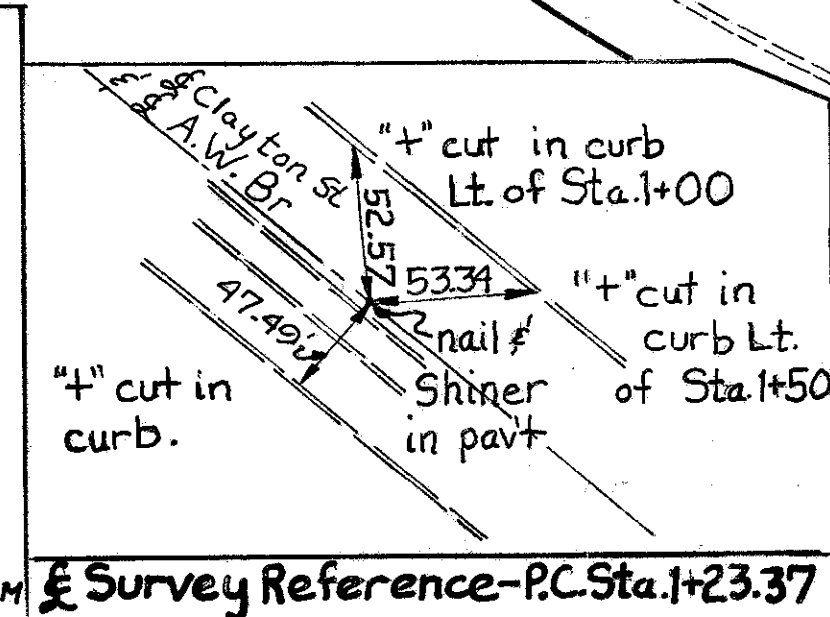
**Curve Data**

curve #1

P.I. = Sta. 2+14.8  
 $\Delta = 25^\circ 42' 40''$   
 $R = 400.63$  M,  $T = 91.43$  M  
 $L = 179.78$   
 $P.C. = \text{Sta. } 1+23.37$  M  
 $P.C.C. = \text{Sta. } 3+03.15$  M

curve #2

P.I. = Sta. 3+65.06,  $\Delta = 14^\circ 15' 00''$  M  
 $R = 495.28$  M,  $T = 61.91$  M,  $L = 123.18$  M  
 $P.C. = \text{Sta. } 3+03.15$ ,  $P.T. = \text{Sta. } 4+26.33$  M



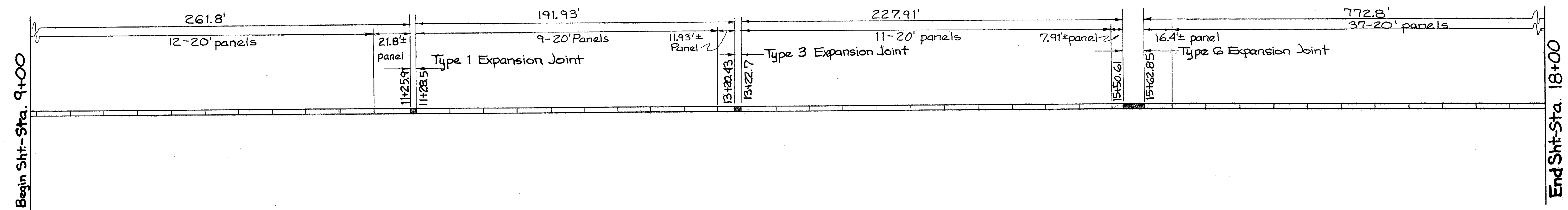
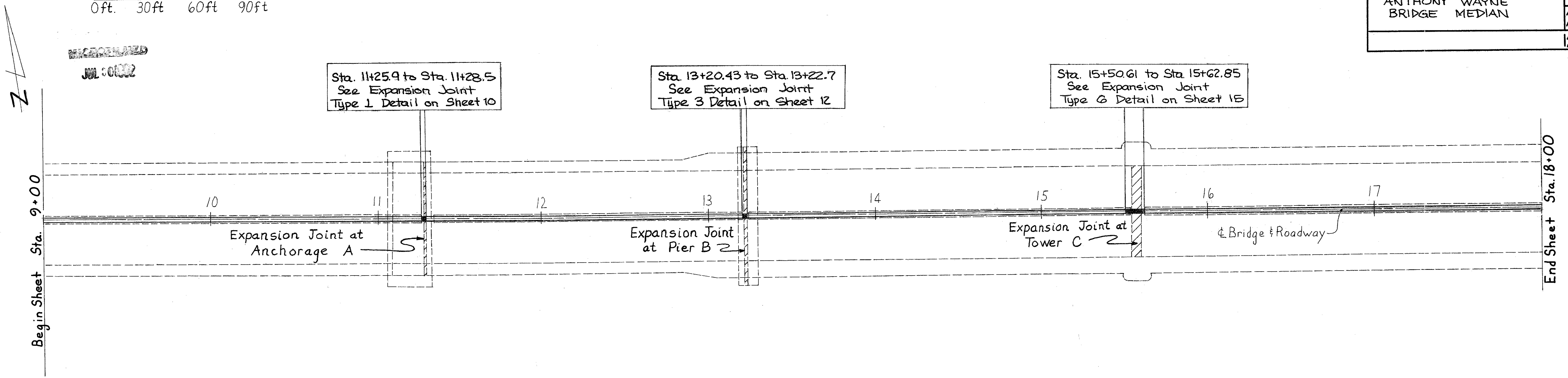
**NOTE 3**  
Concrete Barriers marked ± may be cast-in-place or may be precast at the option of the contractor after field verification of the actual length.

0ft. 30ft 60ft 90ft

LUC-2-18.68 H.H.S., TOLEDO  
ANTHONY WAYNE  
BRIDGE MEDIAN

OHIO  
FHWA 5  
REGION  
FEDERAL  
PROJECT

6  
16



**NOTE:**  
Concrete Barriers marked ± may be cast-in-place or may be precast at the option of the contractor after field verification of the actual length.

**ELEVATION OF  
CONCRETE BARRIER**



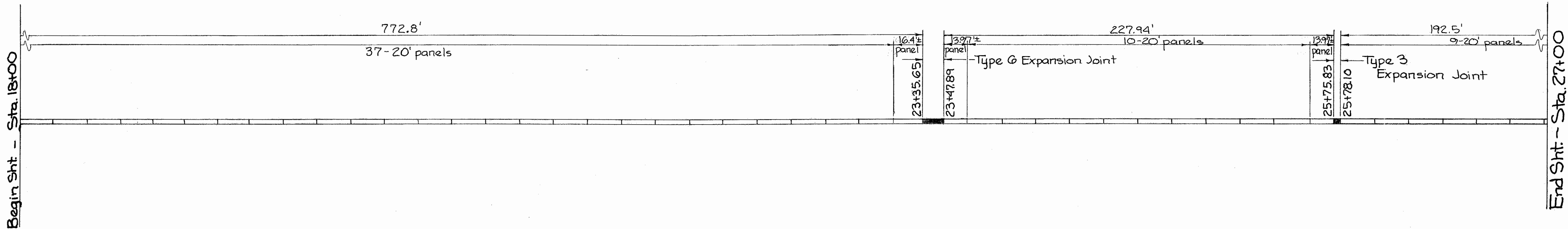
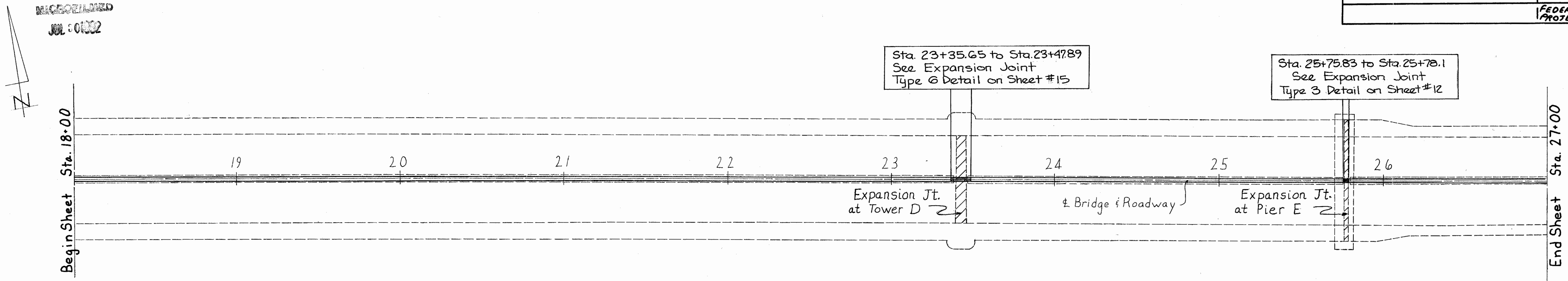
0ft. 30ft. 60ft. 90ft.

LUC 2-18.68 H.H.S., TOLEDO  
ANTHONY WAYNE  
BRIDGE MEDIAN

OHIO  
FHWA 5  
REGION  
FEDERAL  
PROJECT

7  
16

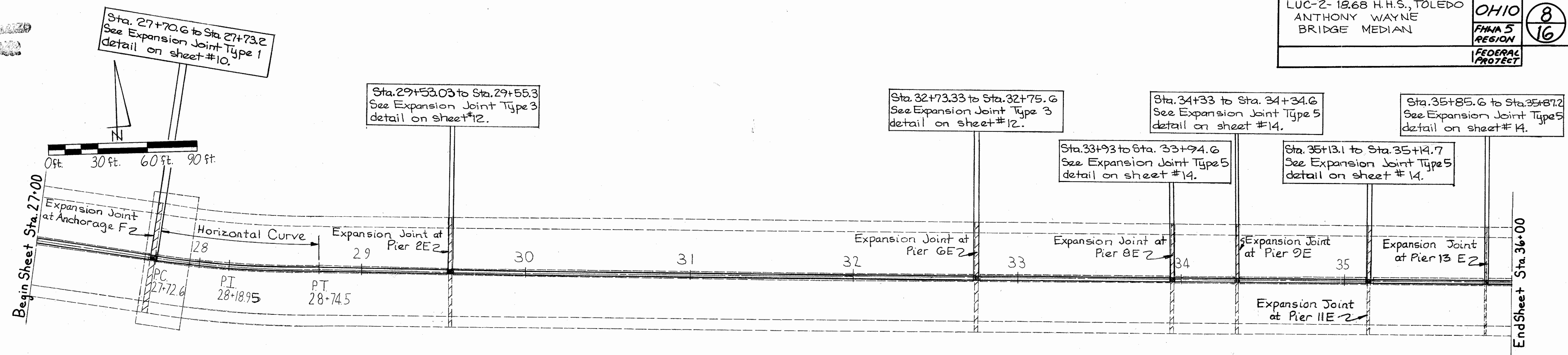
MICROFILMED  
JUL 01 2002



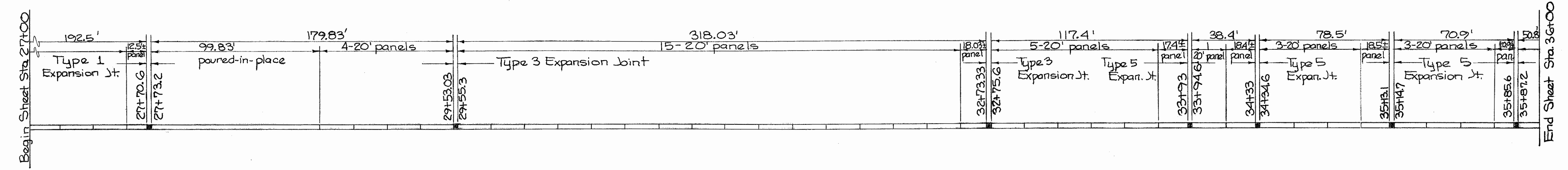
ELEVATION OF  
CONCRETE BARRIER

**NOTE:**  
Concrete Barriers marked ± may be cast-in-place or may be precast at the option of the contractor after field verification of the actual length.

JUL 2012



**§ CURVE DATA**  
 P.I. = Sta. 28+18.95  
 $\Delta = 7^{\circ}-56'-45''$  M  
 T = 55.50' AHEAD M  
 T = 46.50' BACK M  
 E = 2.61' M  
 P.C. = Sta. 27+72.60  
 P.T. = Sta. 28+74.50



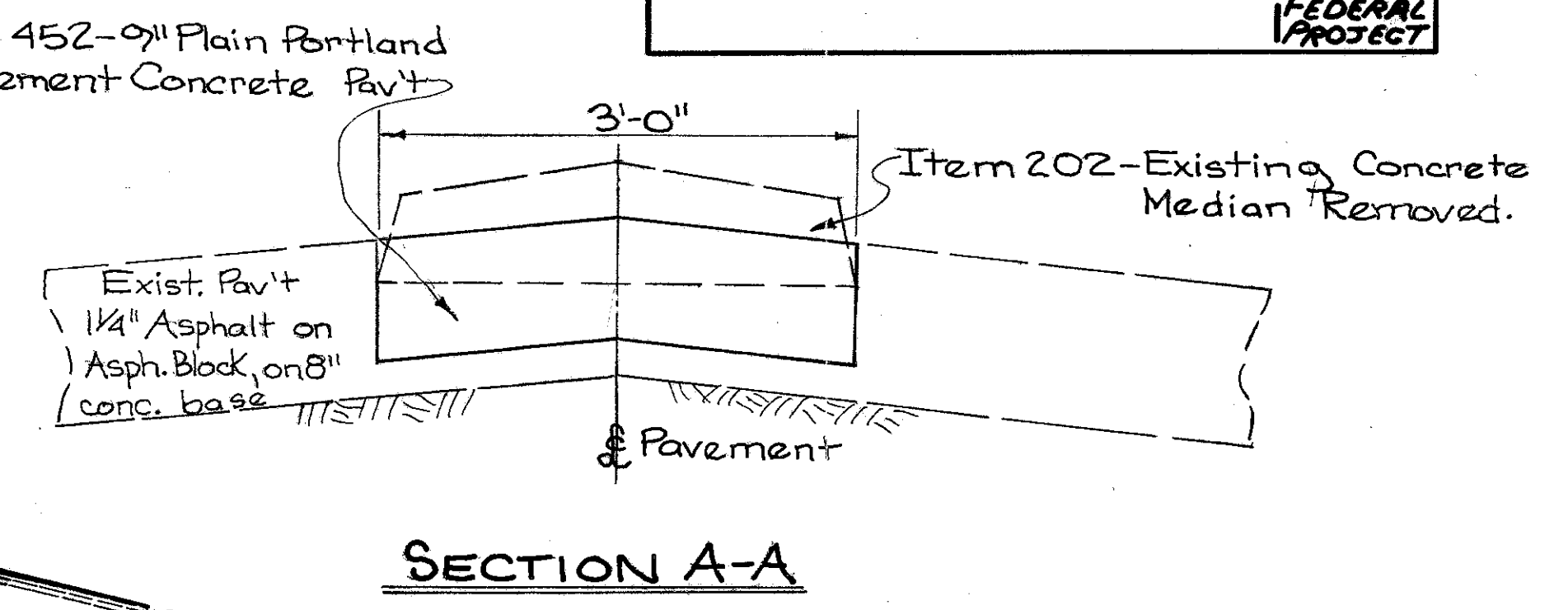
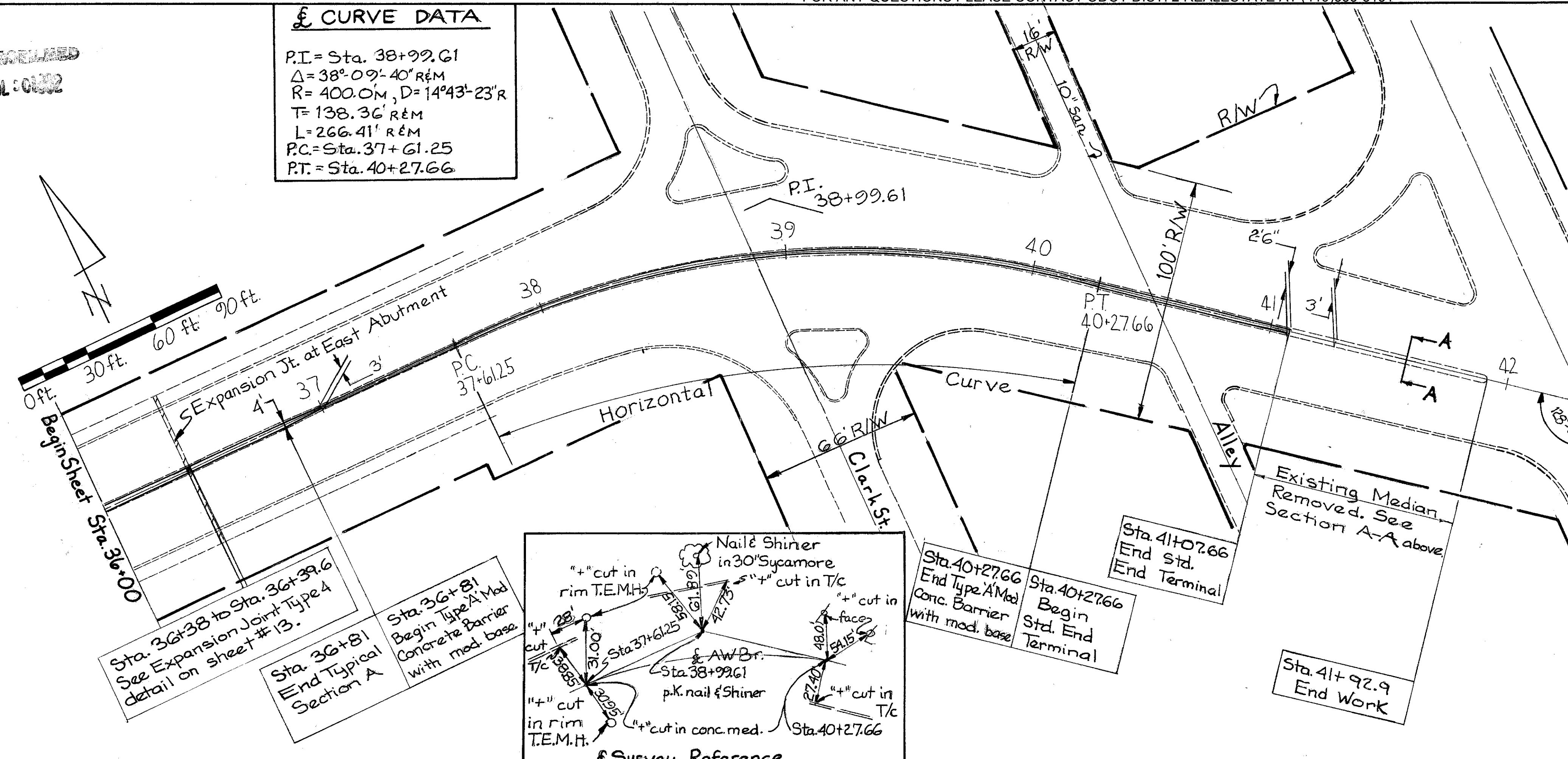
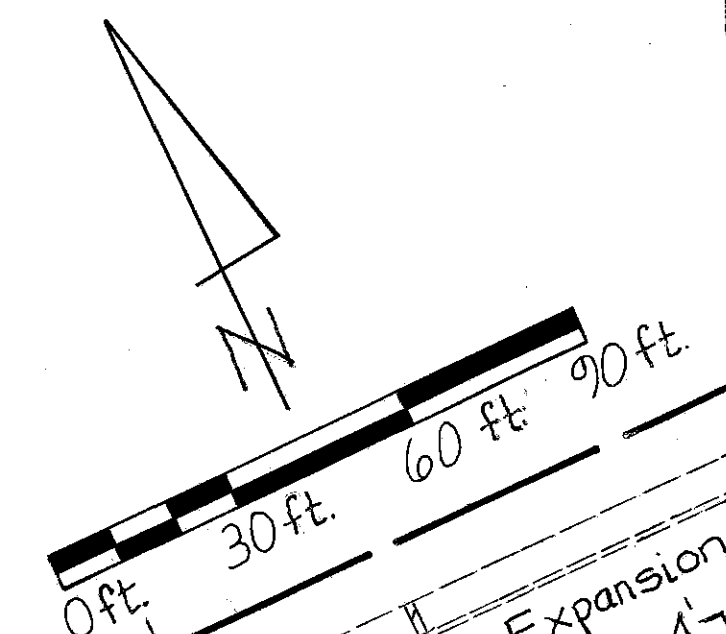
ELEVATION OF CONCRETE BARRIER

**NOTE:**  
 Concrete Barriers marked ± may be cast-in-place or may be precast at the option of the contractor after field verification of the actual length.

**CURVE DATA**

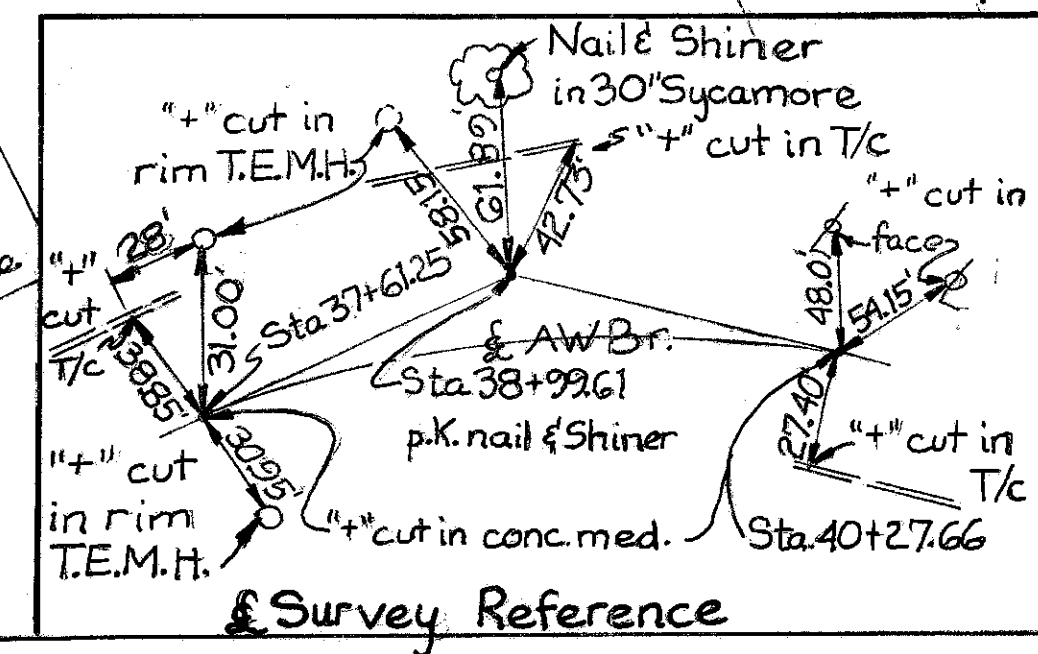
P.I. = Sta. 38+99.61  
 $\Delta = 38^{\circ}09'40''$  R&M  
 $R = 400.01$  M,  $D = 14^{\circ}43'23''$  R  
 $T = 138.36$  R&M  
 $L = 266.41$  R&M  
P.C. = Sta. 37+61.25  
P.T. = Sta. 40+27.66

REVISIONS  
JUL 01/02



Sta. 36+38 to Sta. 36+39.6  
See Expansion Joint Type 4 detail on sheet #13.

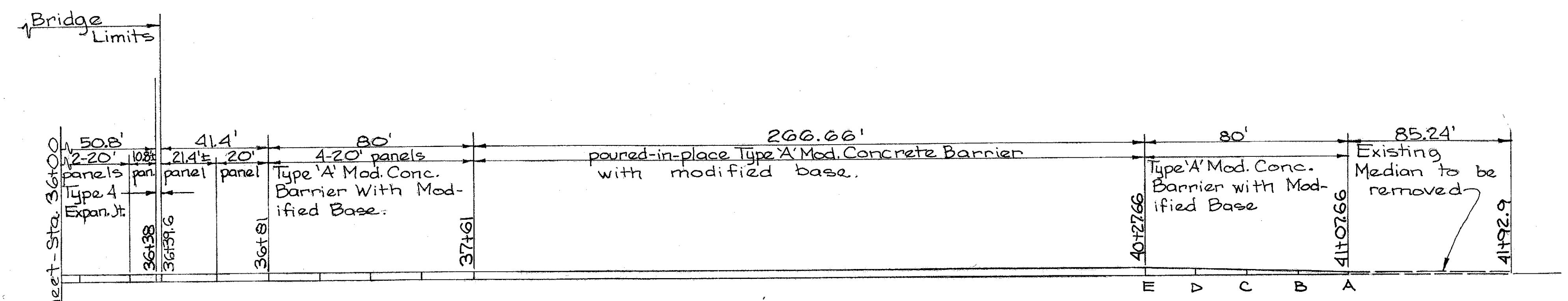
Sta. 36+81  
Begin Type 'A' Mod. Concrete Barrier with mod. base



Sta. 40+27.66  
End Type 'A' Mod. Conc. Barrier with mod. base

Sta. 41+07.66  
End Std. End Terminal

Sta. 41+92.9  
End Work

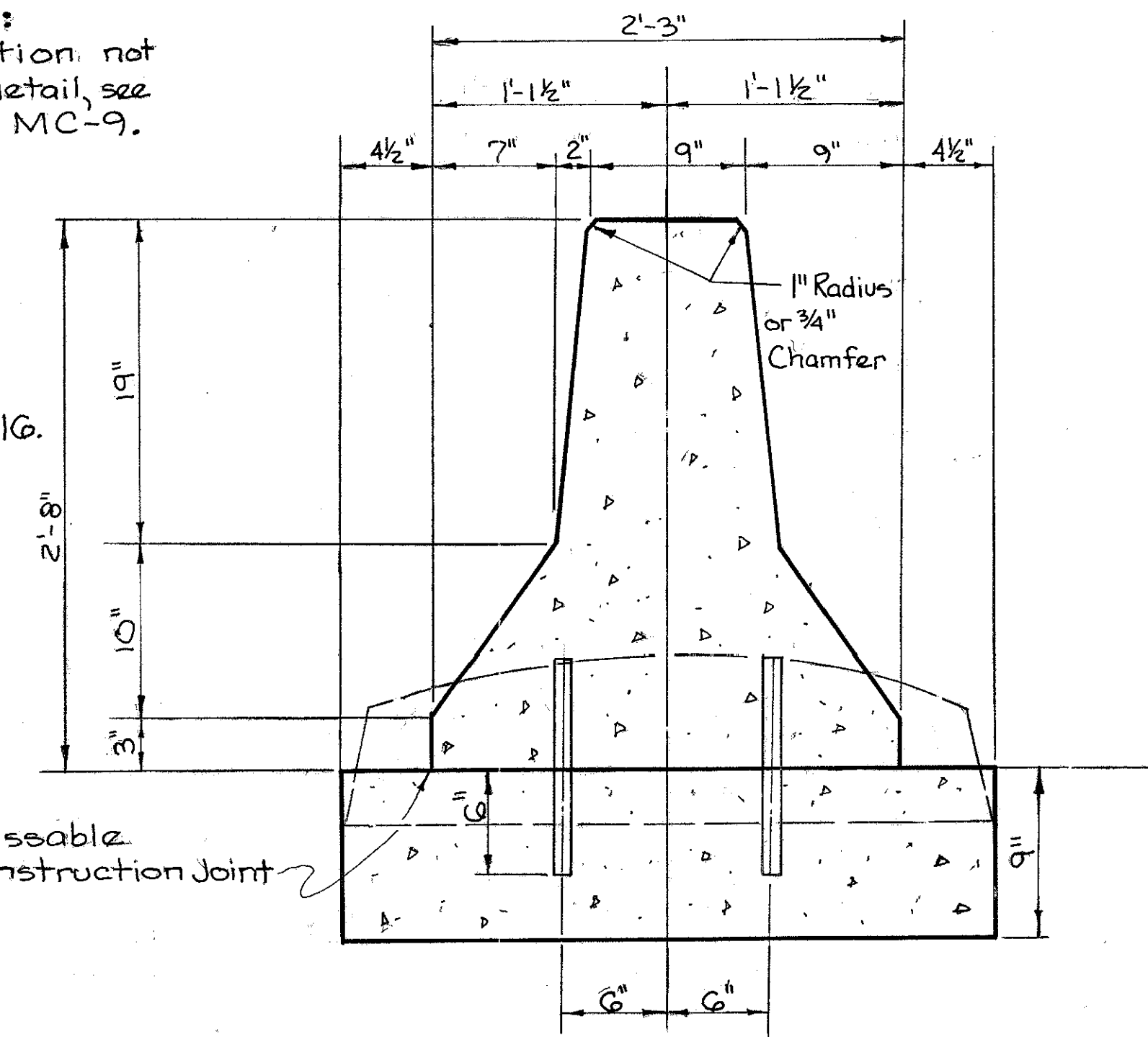


**NOTE:**  
Concrete Barriers marked ± may be cast-in-place or may be precast at the option of the contractor after field verification of the actual length.

ELEVATION OF CONCRETE BARRIER

**CONCRETE BARRIER MODIFIED:**  
for any information not shown on this detail, see ODOT Std. Dwg. MC-9.

**NOTE:**  
For Precast Barrier See Detail on Sht. #16.



ITEM 622-CONCRETE BARRIER TYPE A MODIFIED WITH MODIFIED BASE  
Sta. 36+81 to Sta. 41+07.66