

STATE OF OHIO
DEPARTMENT OF HIGHWAYS

FED. RD. DIST. NO.	STATE	PROJECT	FISCAL YEAR
10	OHIO		1944

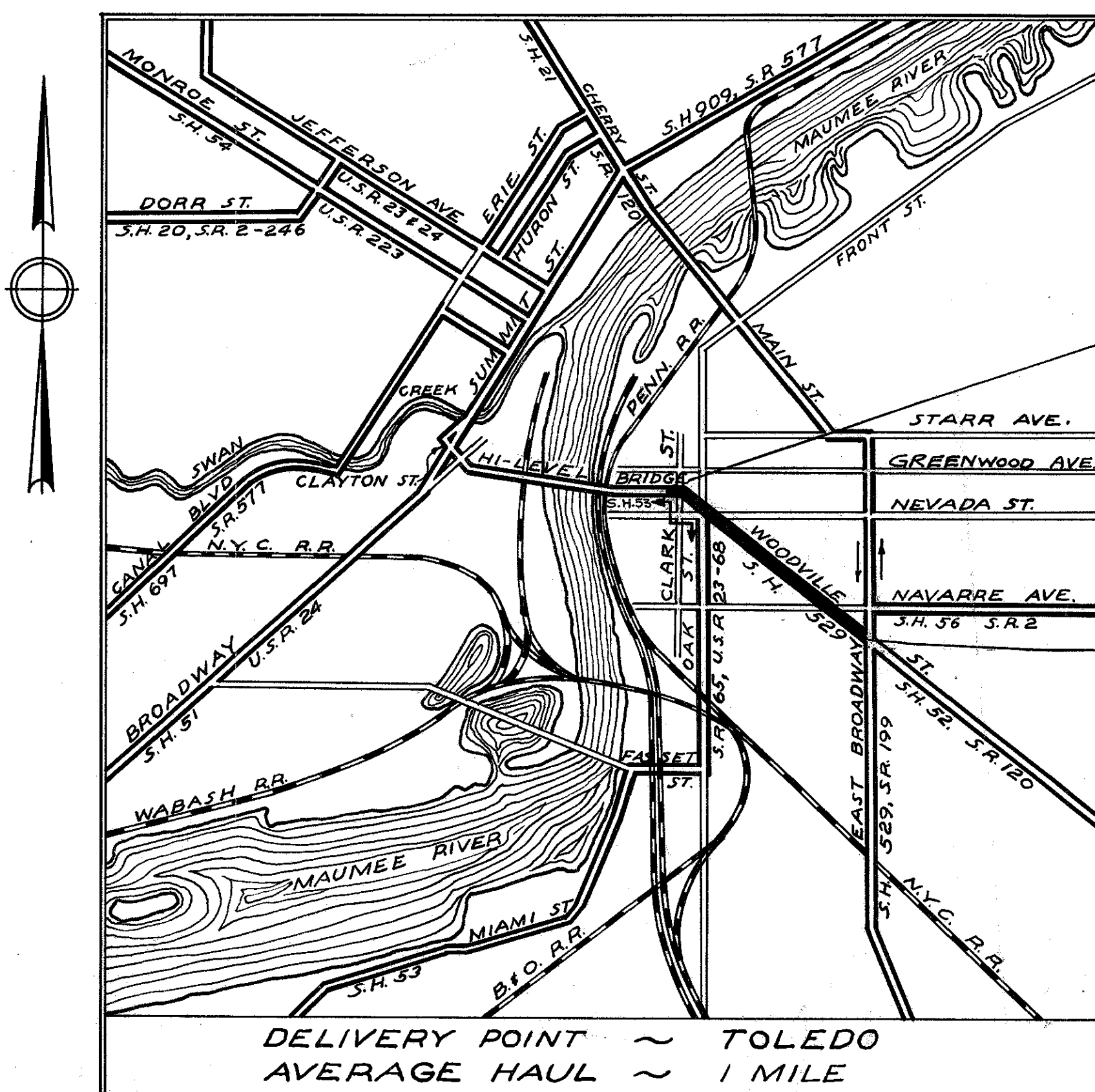
1
22

LUCAS COUNTY
S.H. 52, SEC. TOLEDO (PT.)
S.H. 53, SEC. TOLEDO (PT.)
S.H. 529, SEC. TOLEDO (PT.)

TOLEDO~ELMORE ROAD, S.H. 52, SEC. TOLEDO (PT.)
TOLEDO~GRAND RAPIDS ROAD, S.H. 53, SEC. TOLEDO (PT.)
FOSTORIA~TOLEDO ROAD, S.H. 529, SEC. TOLEDO (PT.)
LUCAS COUNTY
CITY OF TOLEDO

CONVENTIONAL SIGNS

COUNTY LINE	-----
TOWNSHIP LINE	- - - - -
SECTION LINE	- - - - -
CORPORATION LINE	- - - - -
PROPERTY LINE	-----
FENCE LINE	- x - x - x -
CENTER LINE	-----
STEAM RAILROAD	===== =====
POLE LINE	-----
HEDGE	~~~~~
DRAIN PIPE (NEW)	-----
DRAIN PIPE (OLD)	-----
GUARD RAIL	-----



LOCATION PLAN
Scale 1 inch = 2000 Feet

PORTION TO BE IMPROVED
STATE HIGHWAYS
OTHER STREETS
DETOUR

SCALES

PLAN 1" = 20'
PROFILE-HORIZONTAL 1" = 20'
PROFILE-VERTICAL 1" = 5'
CROSS SECTIONS 1" = 5'

The Standard Specifications of the State of Ohio, Department of Highways, including changes and Supplemental Specifications listed in the proposal shall govern this improvement.

I hereby approve these plans and declare that the making of this improvement will require the closing to traffic of the highway and that a detour will be provided as shown on the plans and estimates.

The right of way necessary for this improvement will be provided by the State of Ohio.

Approved: _____
Date: _____ Resident Division Deputy Director

Approved: _____
Date: _____ Chief Engineer Bureau of Maintenance

Approved: _____
Date: _____ Chief Engineer Bureau of Bridges & R.R. Crossings

Approved: *Murray Shaffer*
Date: 11/16/44 Chief Engineer Bureau of Location & Right of Way

Approved: *g. Blague*
Date: 11-16-44 First Asst. Director & Chief Engineer

Approved: *R. S. Jones*
Date: 11-16-44 Director of Highways.

INDEX OF SHEETS

TITLE SHEET	1
TYPICAL SECTION & JOINT SHEETS	2, 2A, 2B
PLAN AND PROFILE	3-9
CROSS SECTIONS	10-13
INTERSECTION PROFILES	14
RETAINING WALL DETAILS	15
MANHOLE CONNECTION, STEP, DRIVE & MONUMENT DETAILS	16
PRECAST TRAFFIC DIVIDER DETAILS	17
GENERAL NOTES	16, 18
TREE AND STUMP SCHEDULE	19
SUB-SUMMARIES	18-21
GENERAL SUMMARY	22

LINE DATA

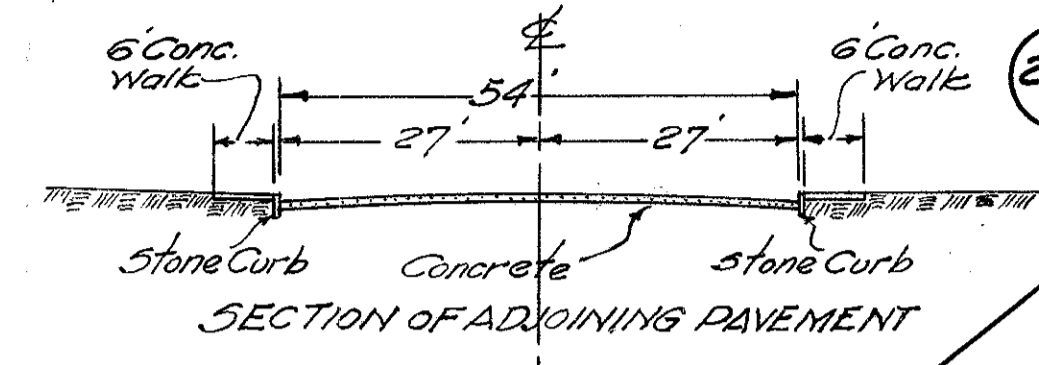
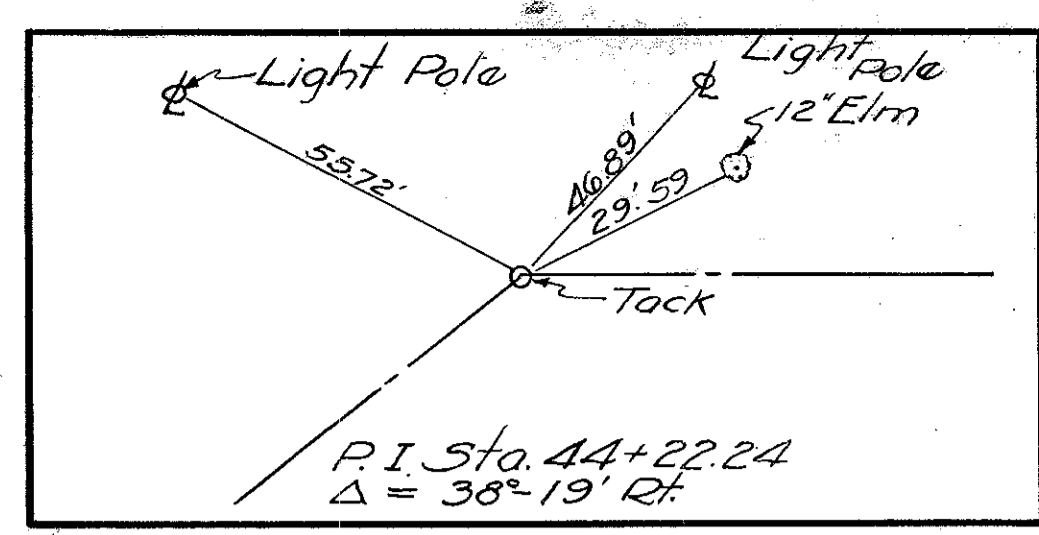
Begin Project, Station 42+82.74
End Project, Station 80+87.8
Gross Length = Net Length = 3805.06 Lin. Ft. or 0.720 Miles
Beginning of work on transition, Sta. 81+61.00
End of work on transition, Sta. 84+98.00
Gross Length = Net Length of work on transition = 337.00 Lin. Ft.
Net Length of work on Project = 4142.06 Lin. Ft. or 0.784 Miles.

STANDARD DRAWINGS		DRAWINGS	
E-5 No. 1	7-1-40	I-8 M.H. No. 1	3-1-39
L-2	12-1-41	B-T-71-E	10-1933
B-T-50-70-71E No. 1	12-1-43	B-T-71-R	8-24-44
G-7.07	6-1-42	I-8 M.H. No. 2	4-1-42
I-1, 2, 3, 4 & 5	3-1-39	I-8 M.H. No. 2	3-1-39
I-8 C.B. No. 6	12-15-41		
I-8 C.B. No. 3	12-15-41		

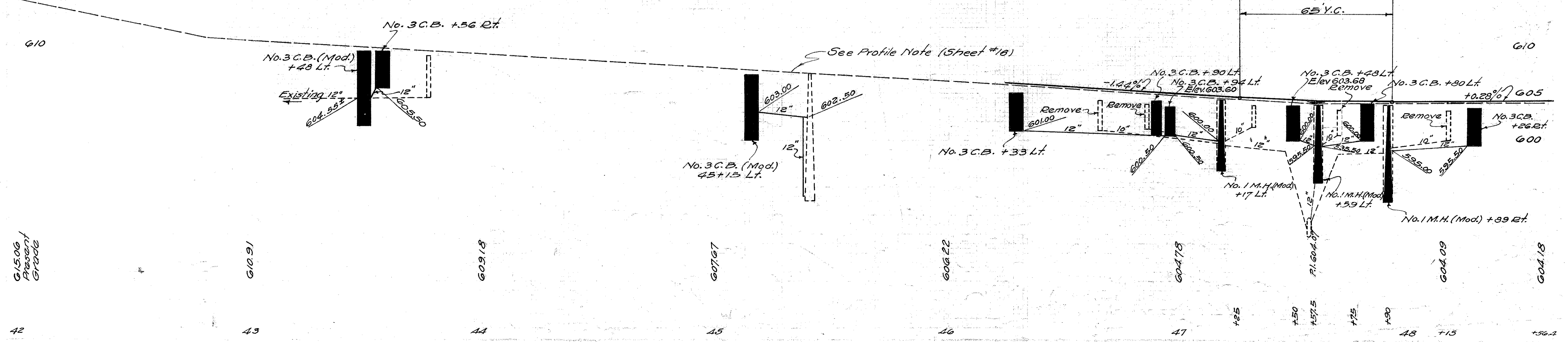
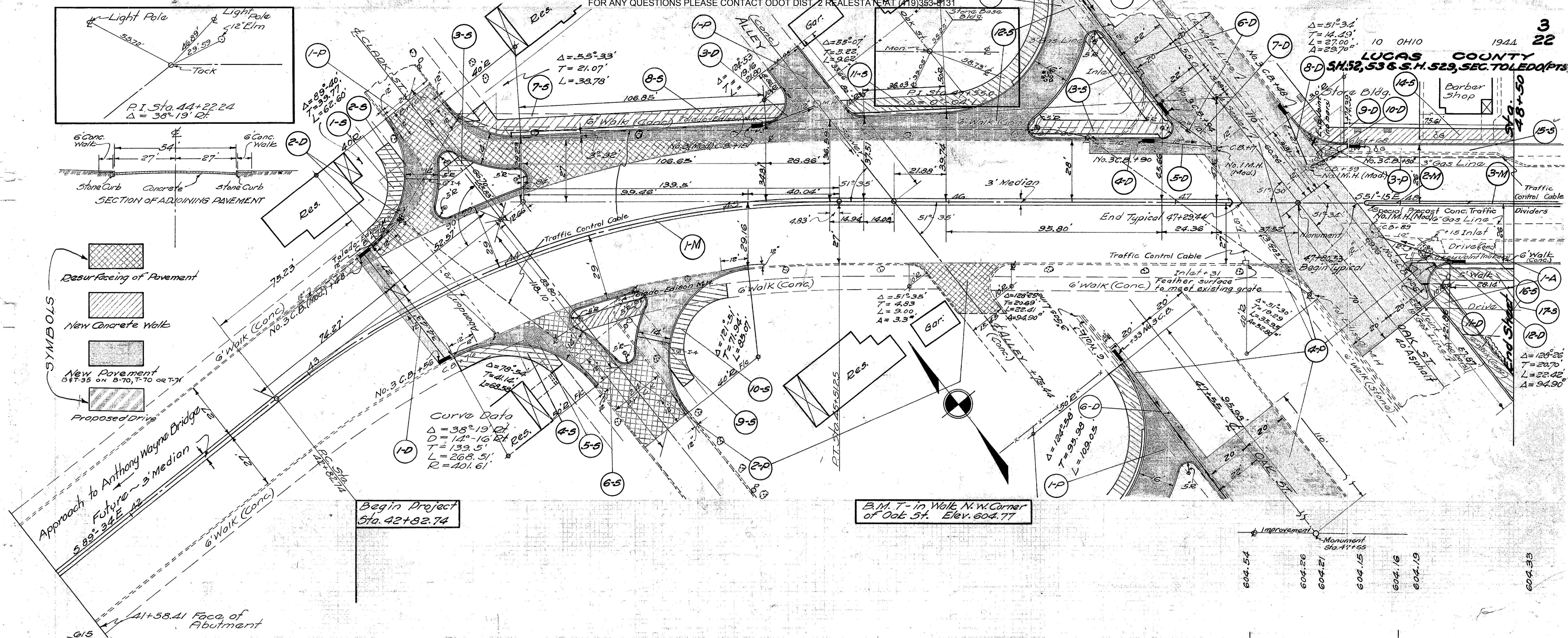
SUPPLEMENTAL SPECIFICATIONS		
E-305	Rev. 5-1-41	
112	Rev. 11-1-44	T-170.15
5-122	4-15-37	T-370.05
177	Rev. 4-21-44	M-102.12
178	Rev. 4-21-44	T-117
183	Rev. 8-24-44	

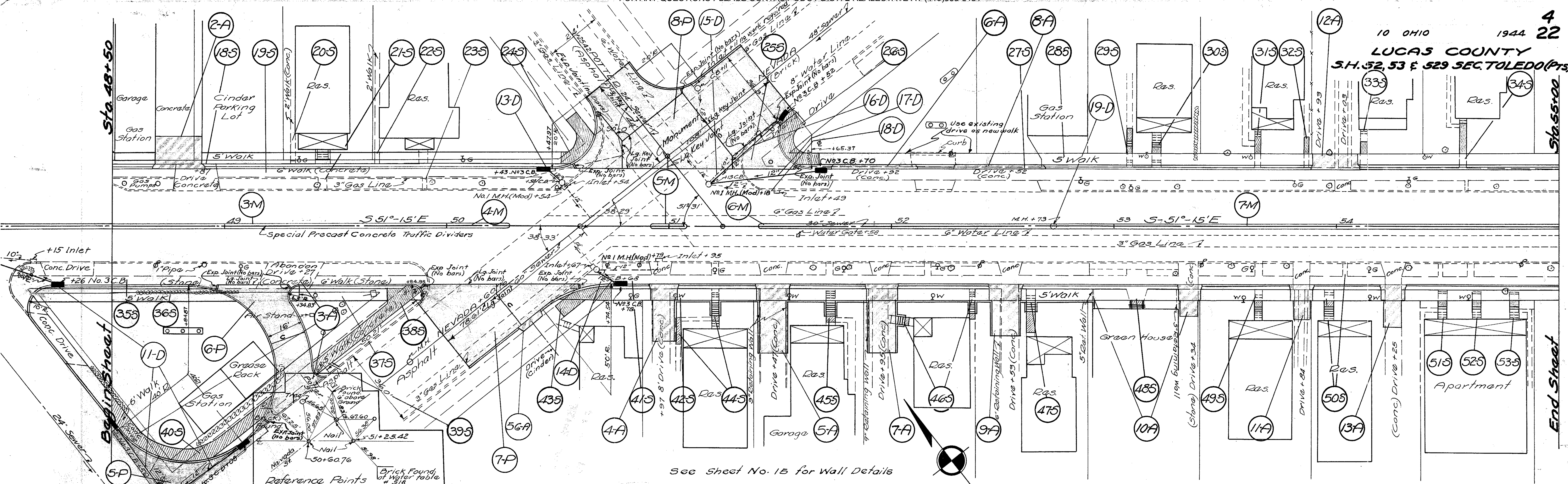
FILE NO. LUCAS COUNTY
S.H. 52, 53 & 529, SEC. TOLEDO (PTS.)
DATE OF LETTING 194
CONTRACT NO.

CONSTRUCTION BUREAU
JUN 29 1955
GROUND PHOTOLAB



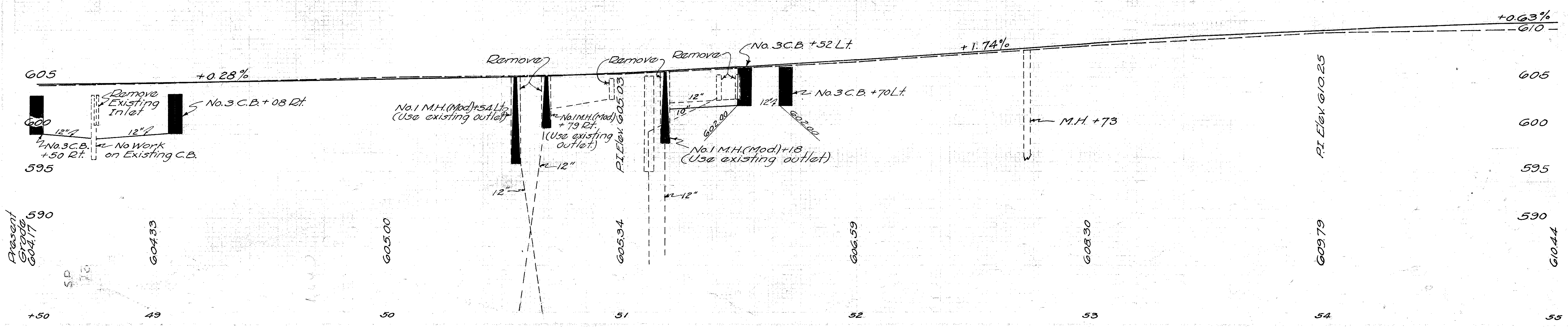
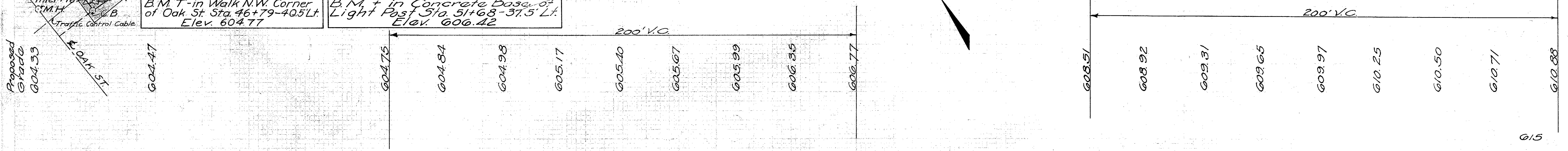
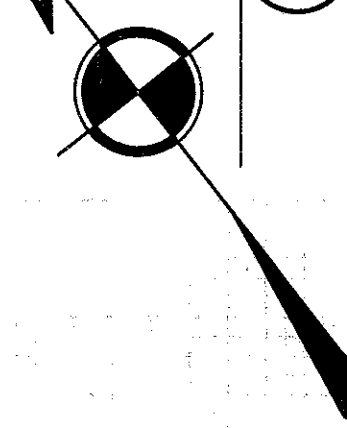
- SYMBOLS**
- Resurfacing of Pavement (diagonal hatching)
- New Concrete Walk (cross-hatching)
- New Pavement (stippled pattern)
- Proposed Drive (dashed line)

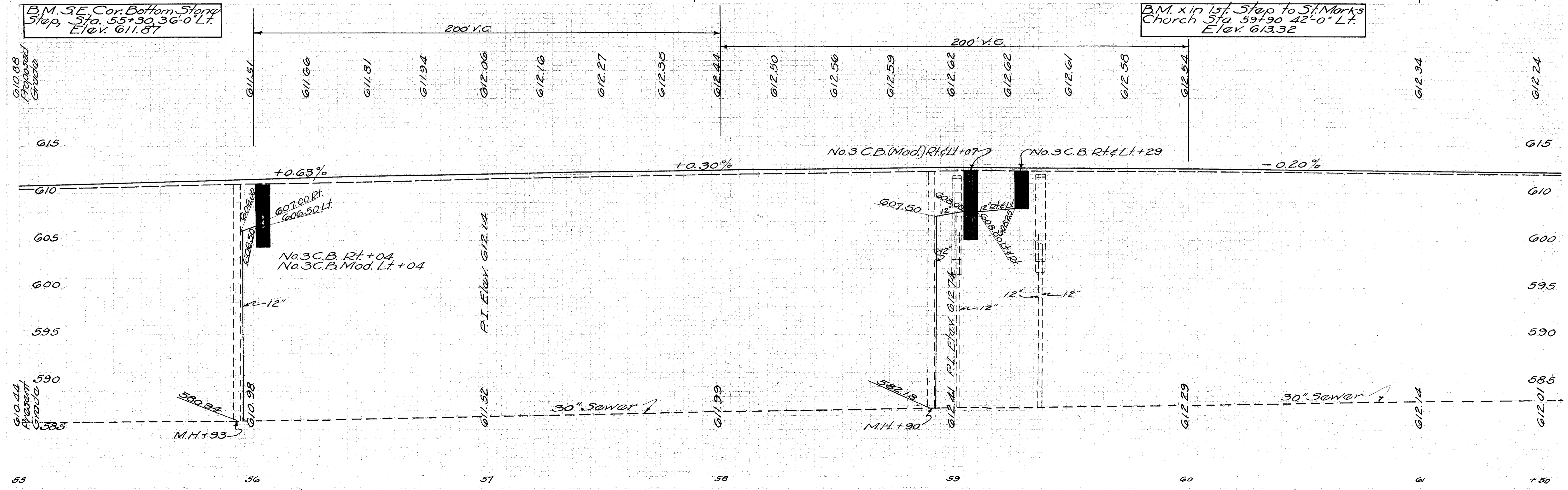
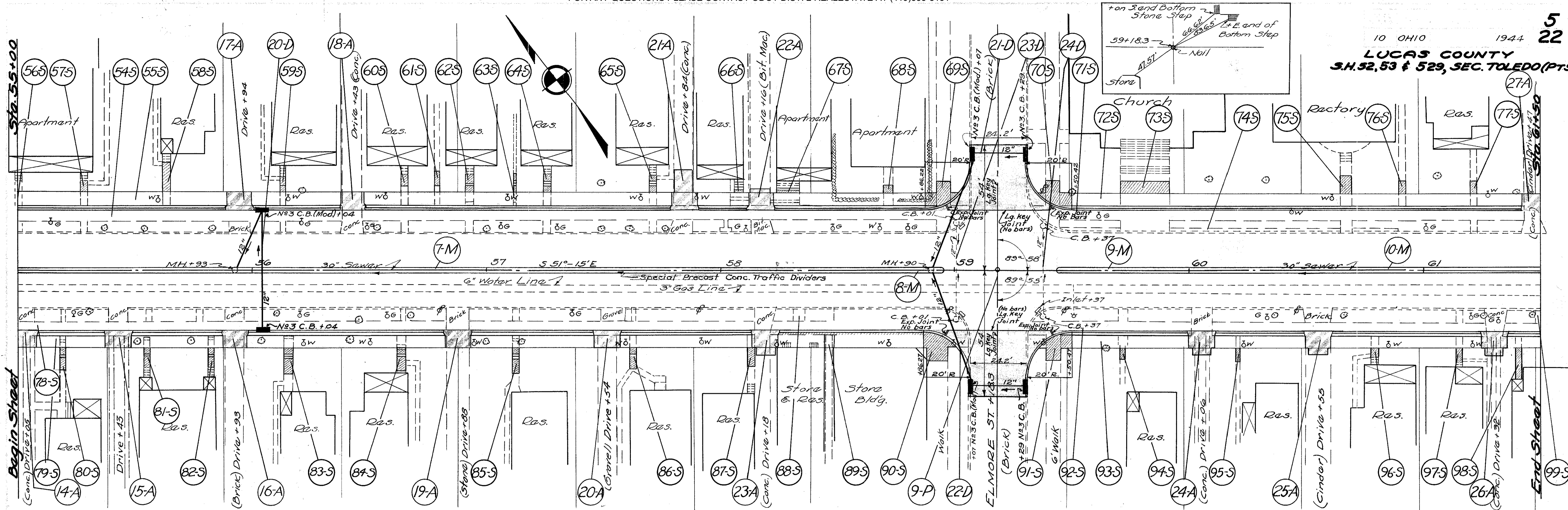


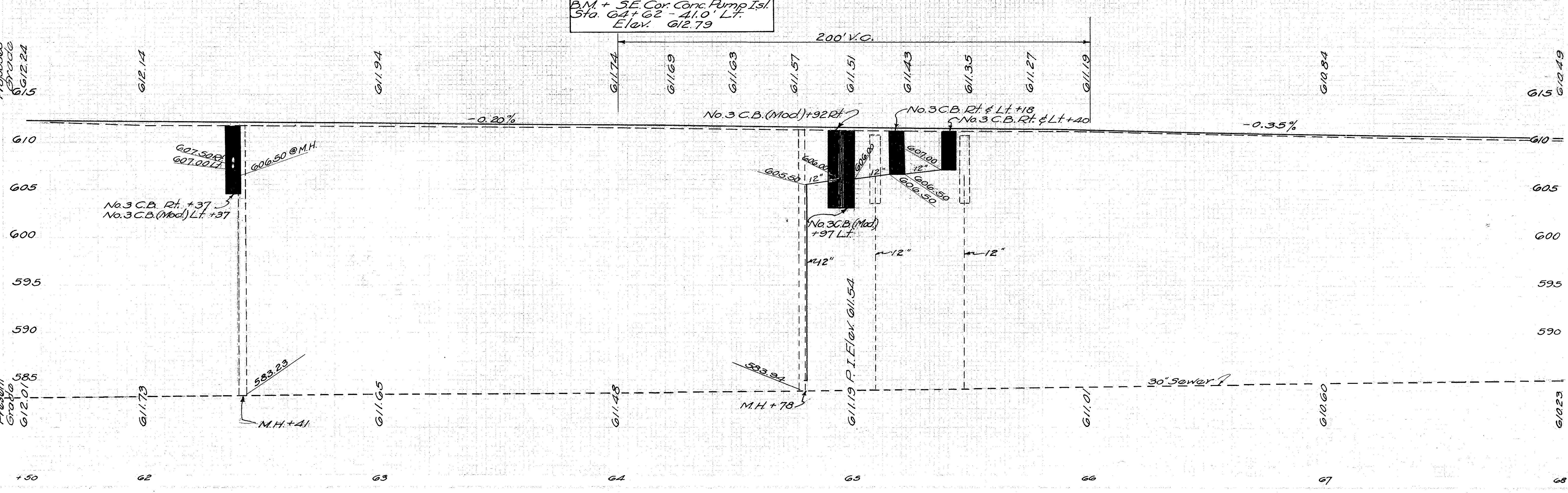
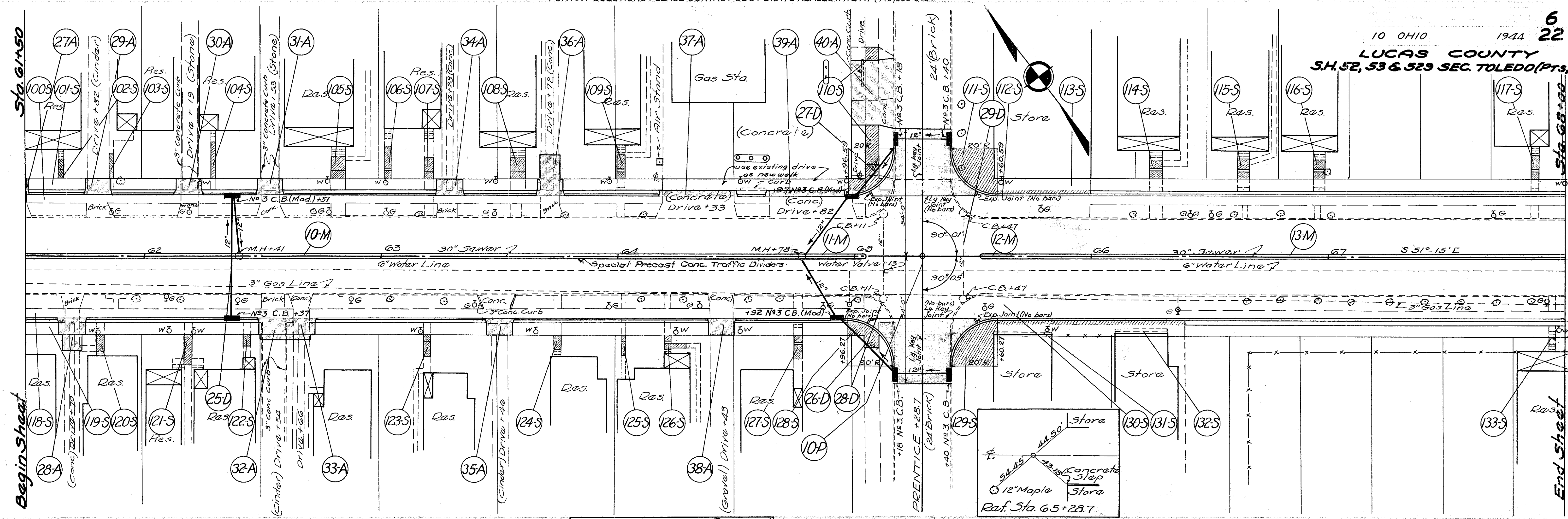


Reference Points
 B.M. T-in Walk N.W. Corner of Oak St Sta. 46+79-40.5 Lt. Elev. 604.77
 B.M. + in Concrete Base of Light Post Sta. 51+68-37.5 Lt. Elev. 606.42

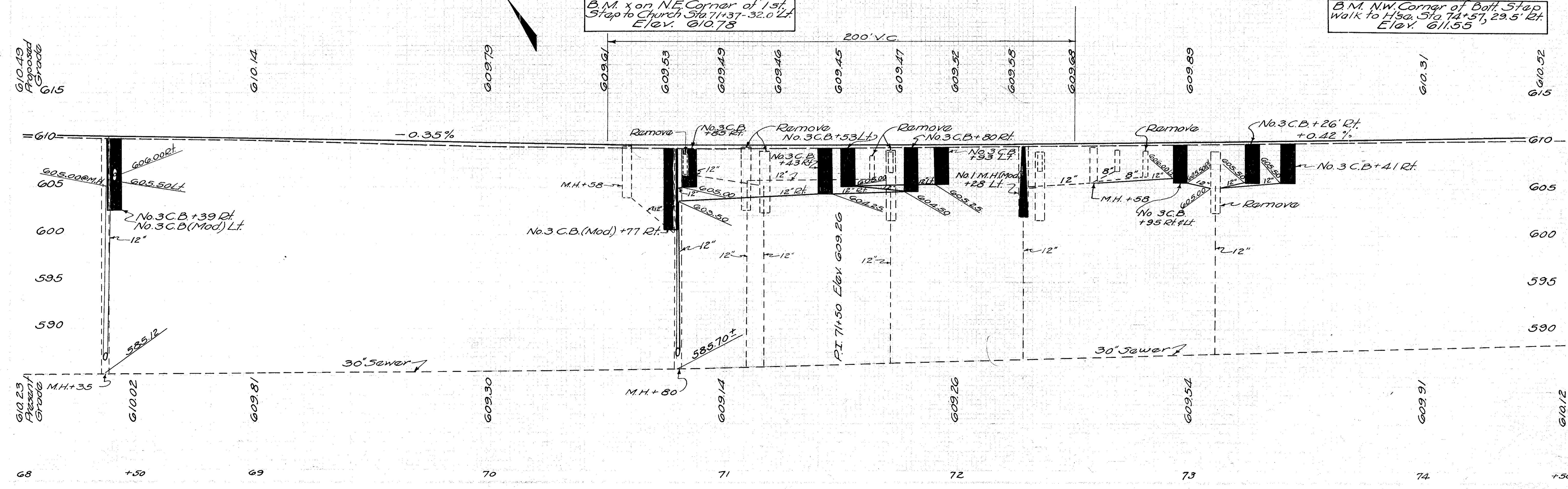
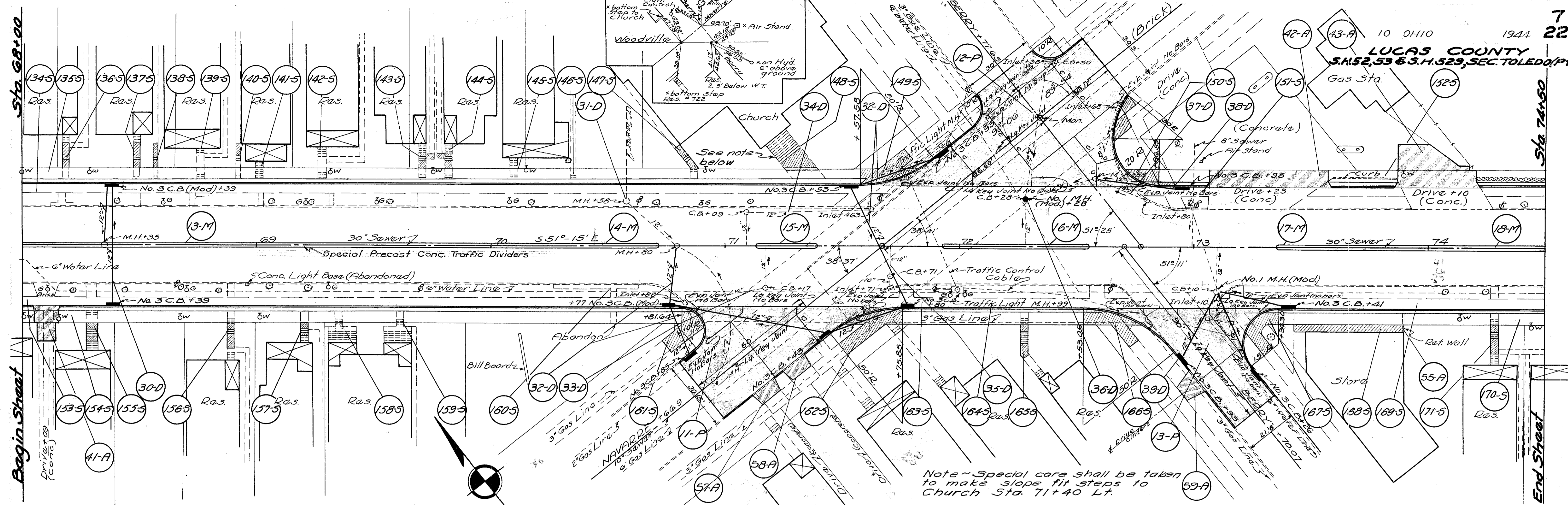
See Sheet No. 15 for Wall Details





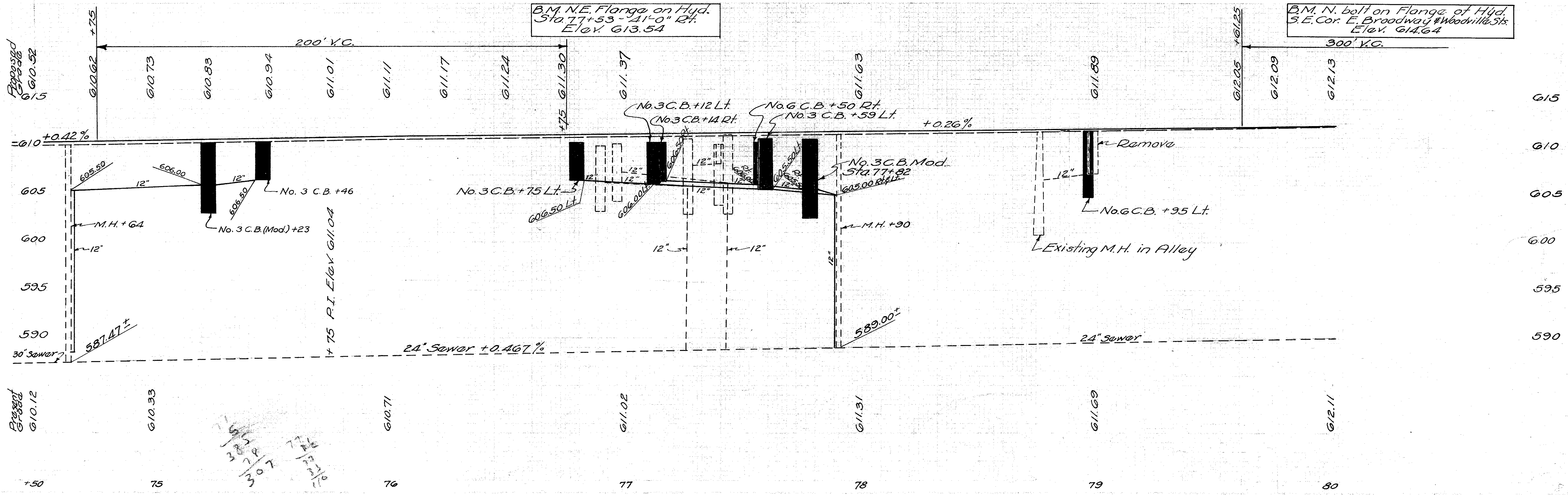
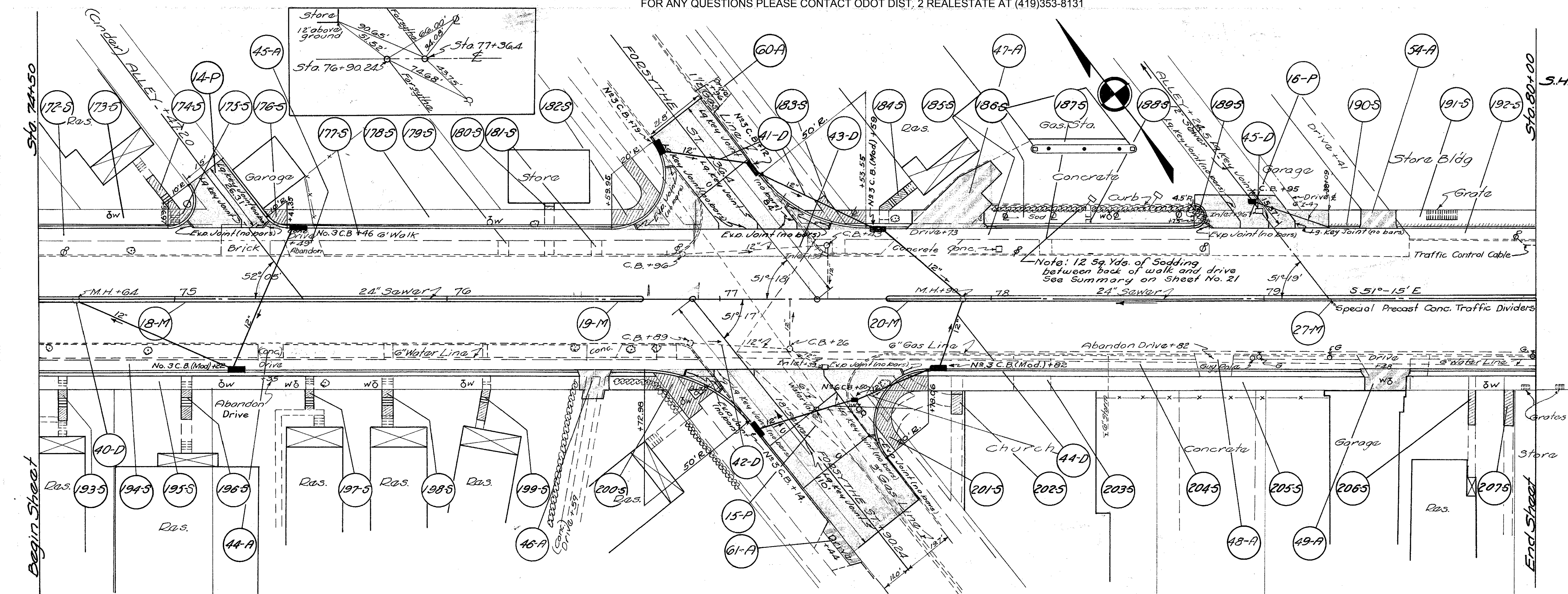


10 OHIO 1944
LUCAS COUNTY
S.H. 52, 53 & S.H. 523, SEC. TOLEDO/P.T.

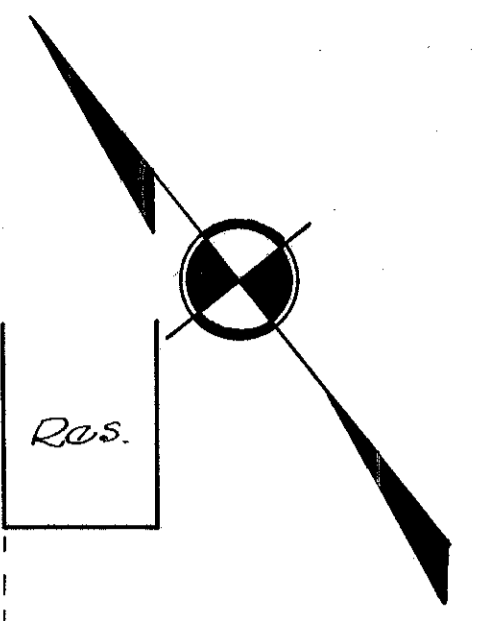
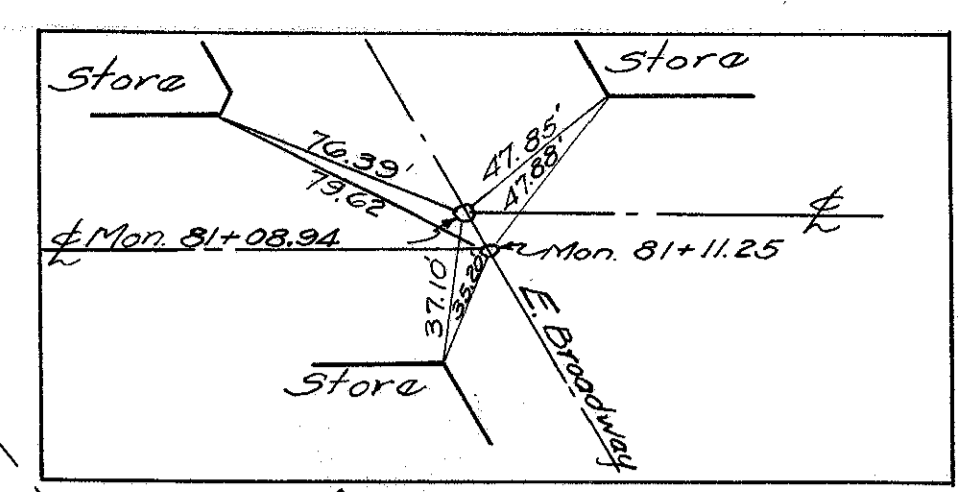
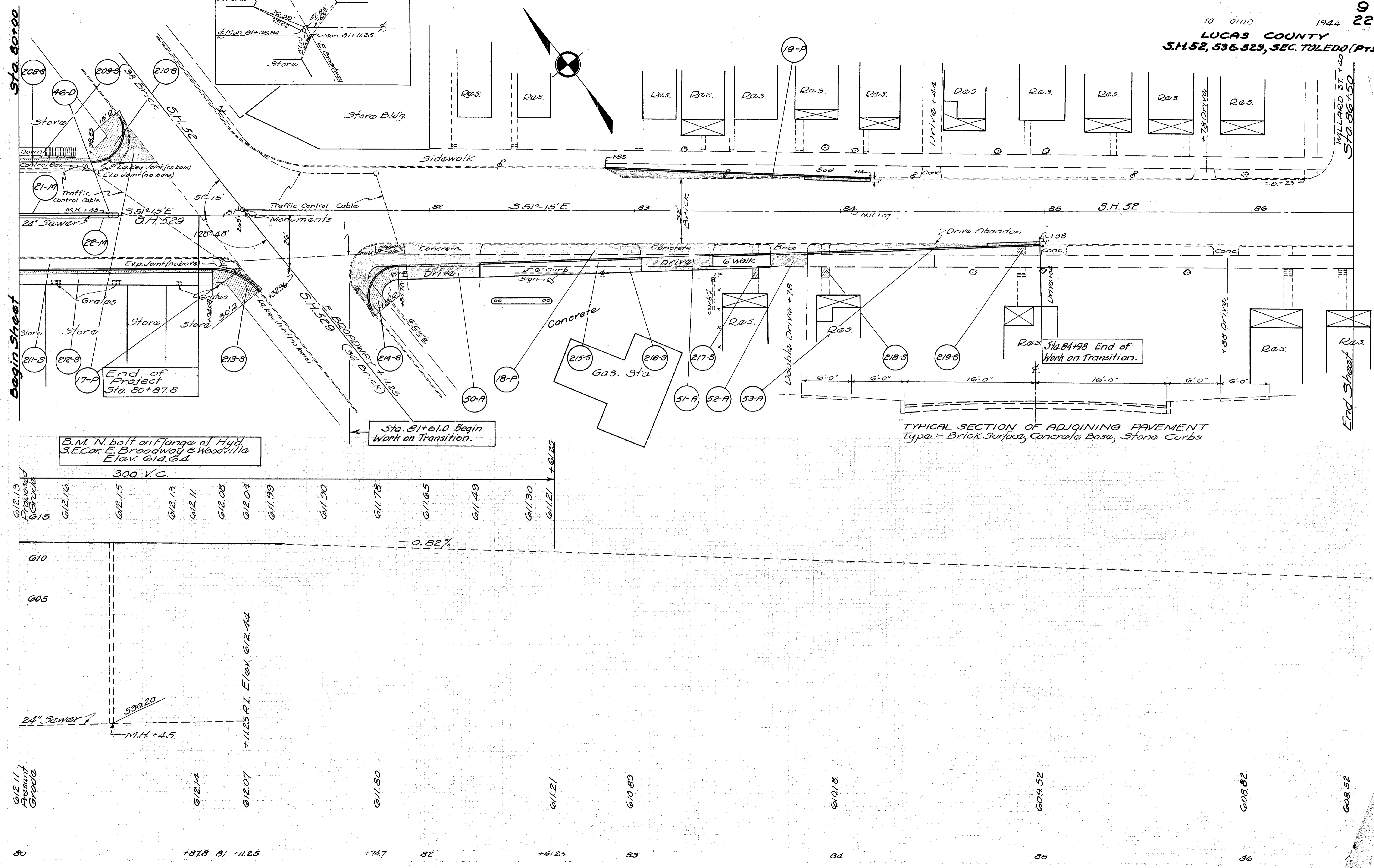


B.M. x on NE Corner of 1st. Stop to Church Sta. 71+37-32.0 Lt. Elev. 610.78

B.M. NW Corner of Bolt Stop walk to H's. Sta. 74+57, 29.5' Rt. Elev. 611.55



5/21/44
77
3/21/44
3/21/44
3/21/44



300 V.C.

G/12.13 Proposed Grade G/15	G/12.16	G/12.15	G/12.13	G/12.11	G/12.08	G/12.04	G/11.99	G/11.90	G/11.78	G/11.65	G/11.49	G/11.30	G/11.21
--------------------------------------	---------	---------	---------	---------	---------	---------	---------	---------	---------	---------	---------	---------	---------

- 0.82%

G/12.11 Present Grade	G/12.14	G/12.07	G/11.80	G/11.21	G/10.89	G/10.18	G/09.52	G/08.82	G/08.52
-----------------------------	---------	---------	---------	---------	---------	---------	---------	---------	---------

TYPICAL SECTION OF ADJOINING PAVEMENT
Type: - Brick Surface, Concrete Base, Stone Curbs

B.M. N. bolt on Flange of Hyd.
S.E. Cor. E. Broadway & Woodville
Elev. 614.64

Sta. 81+61.0 Begin
Work on Transition.

Sta. 84+98 End of
Work on Transition.

Begin Sheet

End Sheet

Sta. 80+00

WILLARD ST. +40
Sta. 86+50