

STATE OF OHIO DEPARTMENT OF TRANSPORTATION

LUCAS COUNTY, TOLEDO	OHIO	1
OAKDALE AVENUE	FHWA REGION 5	15
NAVARRE AVENUE	FEDERAL PROJECT	
F-79(9)	M-1W80(1)	

INDEX OF SHEETS

Title Sheet	Page 1
Typical Sections	Page 2
General Notes & Design Designation	Page 3 & 3A
General Summary	Page 4
Computations & Sub Summaries	Pages 4 to 6
Oakdale Avenue - Plan & Profile	Pages 7 to 10
Intersection Details	Page 10
Cross Section - Oakdale Avenue	Pages 11 to 13
Navarre Avenue - Plan	Pages 13 to 15

LUC-2-19.91 - NAVARRE AVE. F-79(9)
OAKDALE AVE. M-1W80(1)
CITY OF TOLEDO LUCAS COUNTY

I, the duly authorized Contractual Officer of the City of Toledo, do hereby approve these plans and certify that the necessary right of way is available. I do hereby agree, for and in behalf of said City, to maintain the project in a manner satisfactory to the Director of Transportation, State of Ohio, or his duly authorized representatives and will make ample provision each year for such maintenance and repair. Done under authority of Sections 723.11, 5557.02 and 5591.02 et. seq. of the Revised Code of Ohio.

Date: 1/12/79

Walter Kane
City of Toledo - City Manager

CONVENTIONAL SIGNS

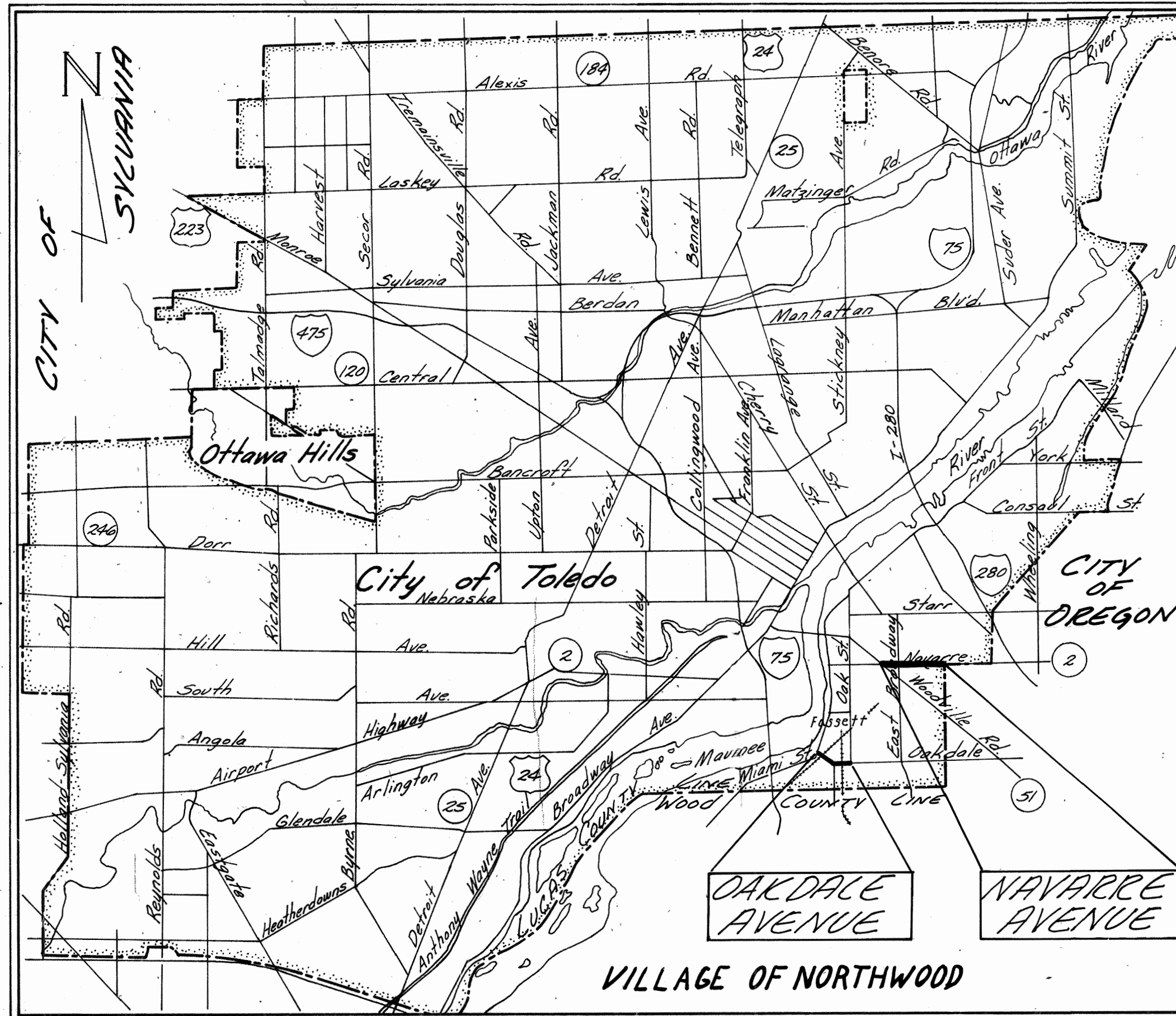
County Line	-----	Limited Access (only)	LA
Township Line	-----	Right of Way (only)	RW
Section Line	-----	Limited Access & Right of Way	LA & RW
Corporation Line	-----	Existing Right of Way	-----
Fence Line (existing)	-x-x-	Property Line (in existing fence)	-x-x-
Center Line	352 353	Railroad	-----
Trees	⊙	Guardrail (existing)	o-o
Stumps	⊙	Existing Gas Line	5" 42"
Utility Poles: Telephone, Power, Light	⊙	Existing Water Line	8" 40"
Existing Pavement Edge	(w/curb)	Existing Storm Sewer	12" 3"
Proposed Pavement Edge	(w/curb)	Proposed Storm Sewer	-----
Existing Sanitary Sewer	-----		

LEGEND

	Item 202 Concrete Walk and Pavement Removed
	Item 202 Asphalt Concrete Wearing Course Removed
	New Concrete Walk and Concrete Drives
	Item 410 Traffic Compacted Surface

CIVE DATA

WORK LENGTH		PROJECT LENGTH	
OAKDALE AVENUE M-1W80(1)		OAKDALE AVENUE M-1W80(1)	
Begin Work	Sta. 0+92	Begin Project	Sta. 1+17
Suspend Work	Sta. 4+90.70	Suspend Project	Sta. 4+90.70
Resume Work	Sta. 5+34.3	Resume Project	Sta. 5+34.3
Suspend Work	Sta. 7+29.7	Suspend Project	Sta. 7+29.7
Resume Work	Sta. 8+13.2	Resume Project	Sta. 8+13.2
Suspend Work	Sta. 15+83	Suspend Project	Sta. 15+83
Resume Work	Sta. 16+06	Resume Project	Sta. 16+06
End Work	Sta. 18+82.50	End Project	Sta. 18+82.50
TOTAL WORK LENGTH = 4,930.90 lin. ft. or 0.933 miles		TOTAL PROJECT LENGTH = 4,796.90 lin. ft. or 0.908 miles	
NAVARRE AVENUE F-79(9)		NAVARRE AVENUE F-79(9)	
Begin Work	Sta. 0+42	Begin Project	Sta. 0+77
Suspend Work	Sta. 7+185	Suspend Project	Sta. 6+98.5
Resume Work	Sta. 7+56	Resume Project	Sta. 7+75
End Work	Sta. 33+70	End Project	Sta. 33+35
TOTAL WORK LENGTH = 4,930.90 lin. ft. or 0.933 miles		TOTAL PROJECT LENGTH = 4,796.90 lin. ft. or 0.908 miles	



LOCATION MAP

SCALE IN MILES
0 1/2 1 2

Scale

Plan & Profile	0 10 20 30 40 50
Plan	0 20 40 60 80 100
Profile	0 20 40 60 80 100
Cross Sections - Hor. & Vert.	0 20 40 60 80 100

SUPPLEMENTAL SPECIFICATIONS

835-	1-13-77
1001-	1-3-77

SUPPLEMENTAL PRINTS OF STANDARD CONSTRUCTION DRAWINGS

BP-5	8-11-75	MC-1	6-13-69
BP-6	6-1-65	MC-3	6-1-73
BP-7	12-6-76	MC-4	7-26-76
BP-12	8-11-75	MH-1	6-12-75
		MH-3	6-12-75
		L-1	6-1-73
CB-3	1-1-76		
CB-3A	1-1-76		
CB-6	6-1-65		

Approved: James L. Finkbeiner
Date 2-24-78 District Deputy Director of Transportation

Approved: _____
Date _____ Engineer, Bureau of Bridges and Structural Design

Approved: R. E. Gutter
Date 8-1-78 Chief Engineer, Planning and Design

Approved: David L. Weir
Date 8-1-78 Director, Department of Transportation

DEPARTMENT OF TRANSPORTATION
FEDERAL HIGHWAY ADMINISTRATION

APPROVED:

DIVISION ADMINISTRATOR DATE

Project: LUC-2-19.91
Date of Letting: _____ Contract No. _____

Note: The paved berm shall be carried thru all stone drives

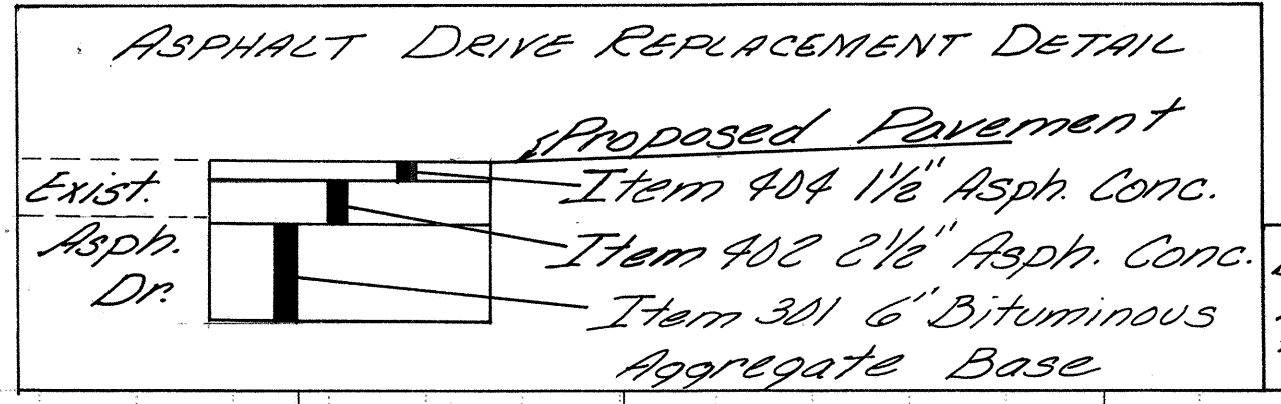
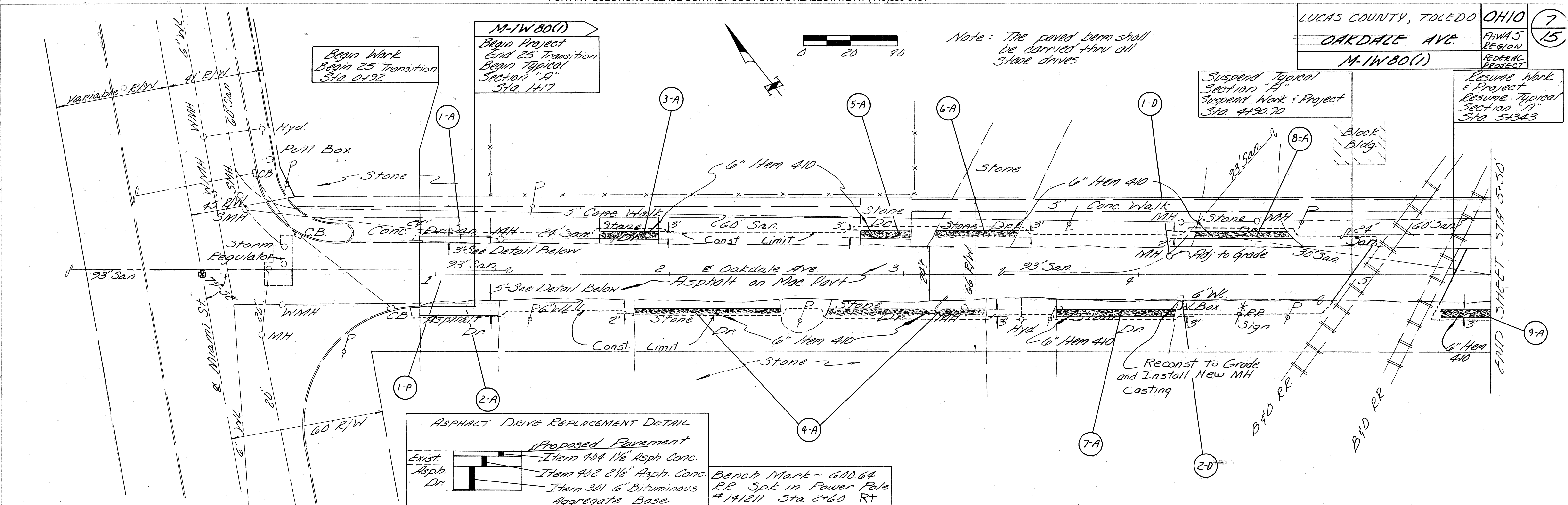
Begin Work
 Begin 25' Transition
 Sta 0+92

M-1W80(1)
 Begin Project
 End 25' Transition
 Begin Typical
 Section "A"
 Sta. 1+17

Suspend Typical
 Section "A"
 Suspend Work: Project
 Sta 4+92.70

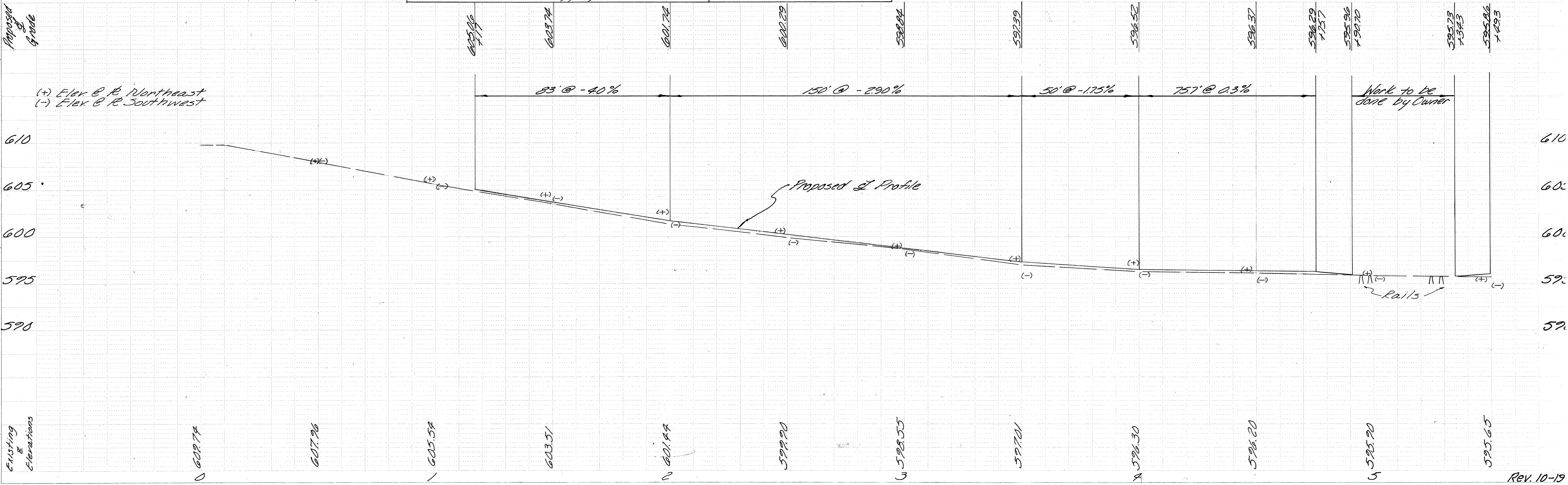
Resume Work
 & Project
 Resume Typical
 Section "A"
 Sta 5+34.3

PLAN	DATE
BY	
CHANGED	
PLOTTED	
ALIGNMENT CHECKED	
RT. OF WAY CHECKED	
NO.	



Bench Mark - 600.64
 RR Spt in Power Pole
 #141211 Sta 2+60 RT

PROFILE	DATE
BY	
CHANGED	
PLOTTED	
GRADES CHECKED	
B.M. NOTED	
STRUCTURE NOTATIONS CHECKED	
NO.	



Note:

All No. 6 CB shall have a 1' conc. apron 8 1/4" thick around the gutter frame and grate.

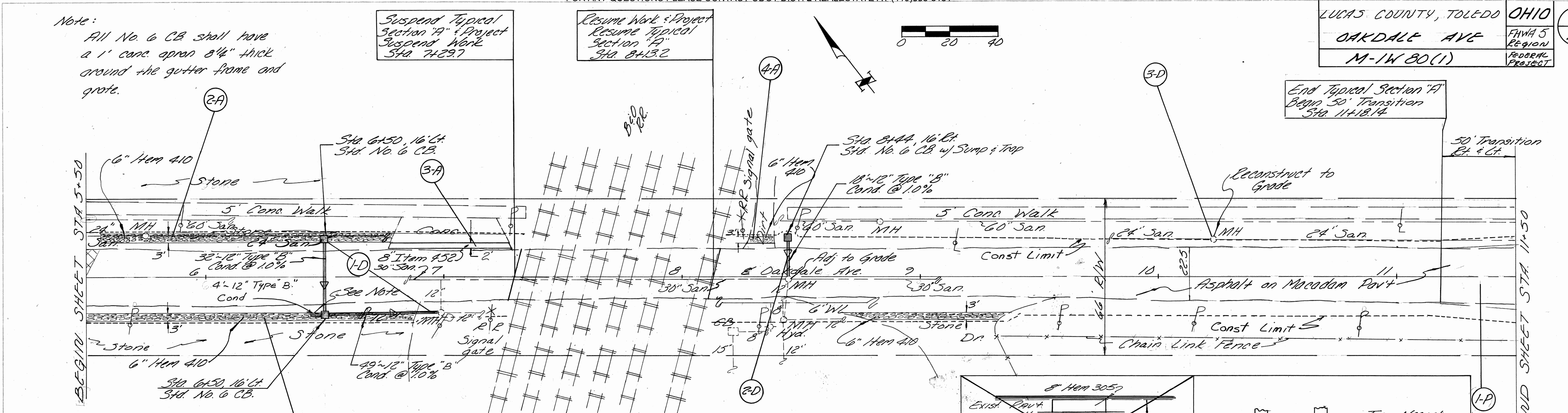
Suspend Typical Section "A" - Project Suspend Work STA 7+29.7

Resume Work - Project Resume Typical Section "A" STA 8+13.2

End Typical Section "A" Begin 50' Transition STA 11+18.14

PLAN	DATE
BY	
CHECKED	
NO.	
DATE	
NO.	
DATE	
NO.	
DATE	

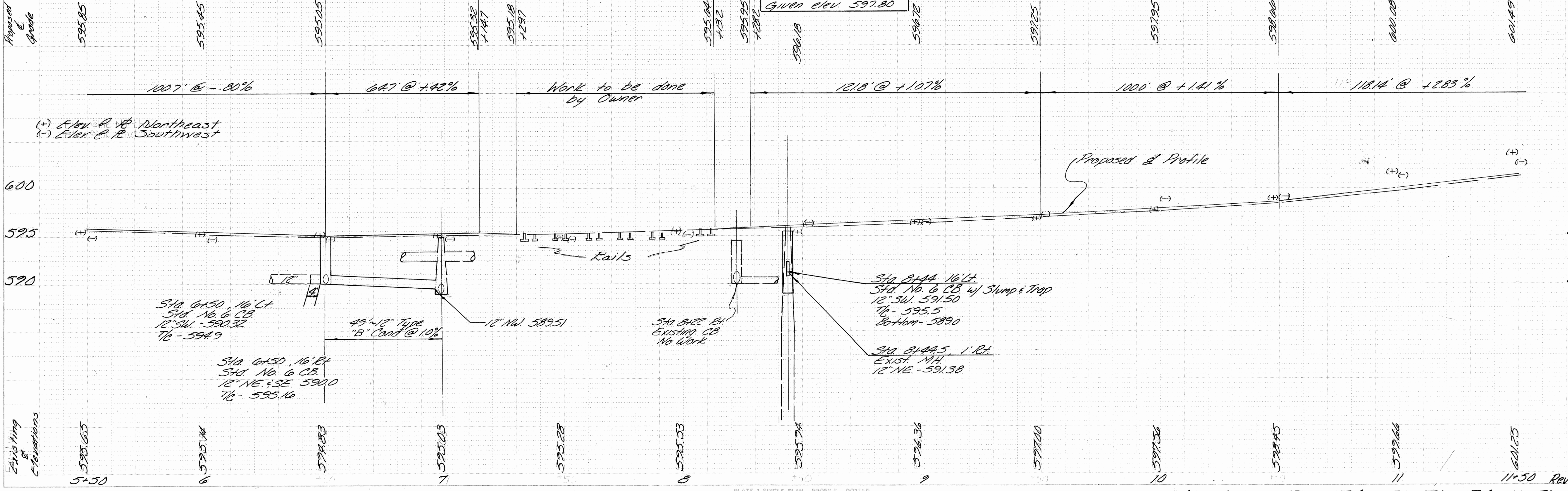
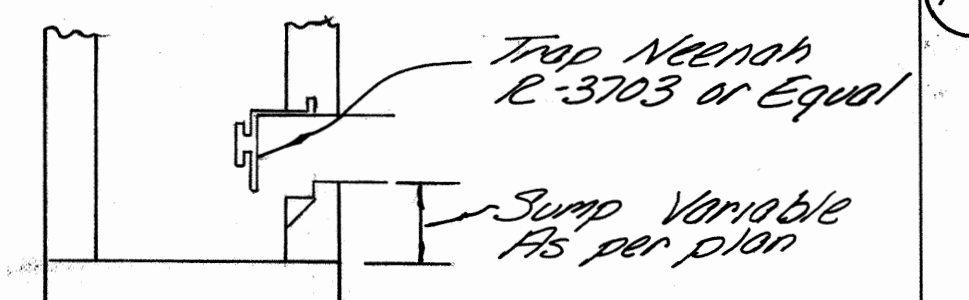
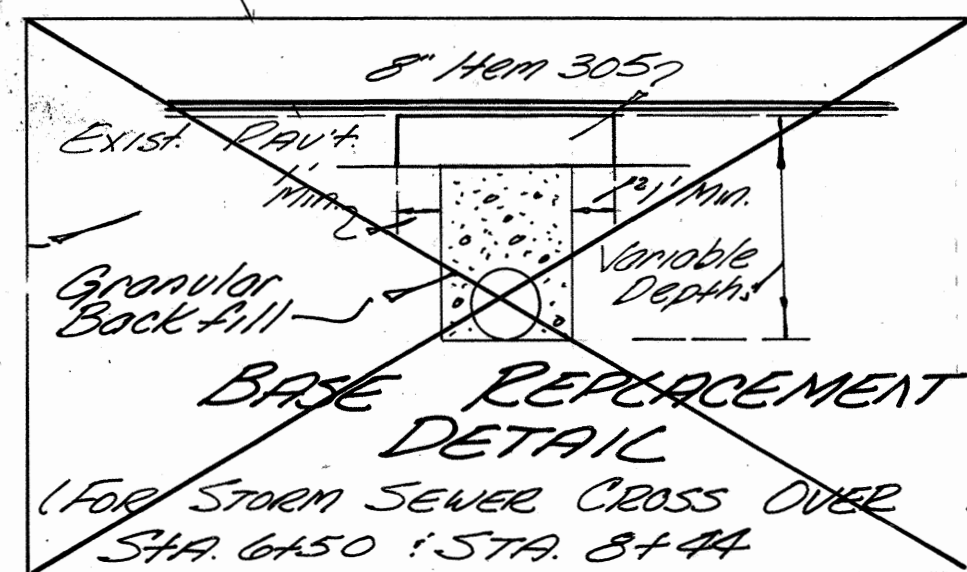
PROFILE	DATE
BY	
CHECKED	
NO.	
DATE	
NO.	
DATE	
NO.	
DATE	

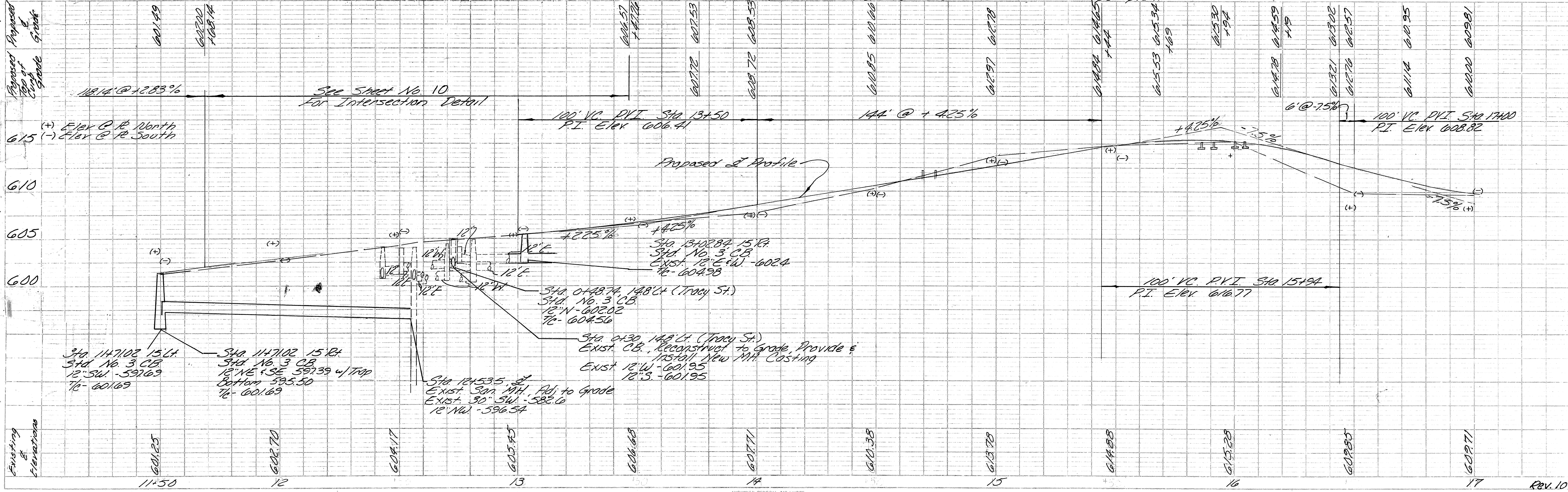
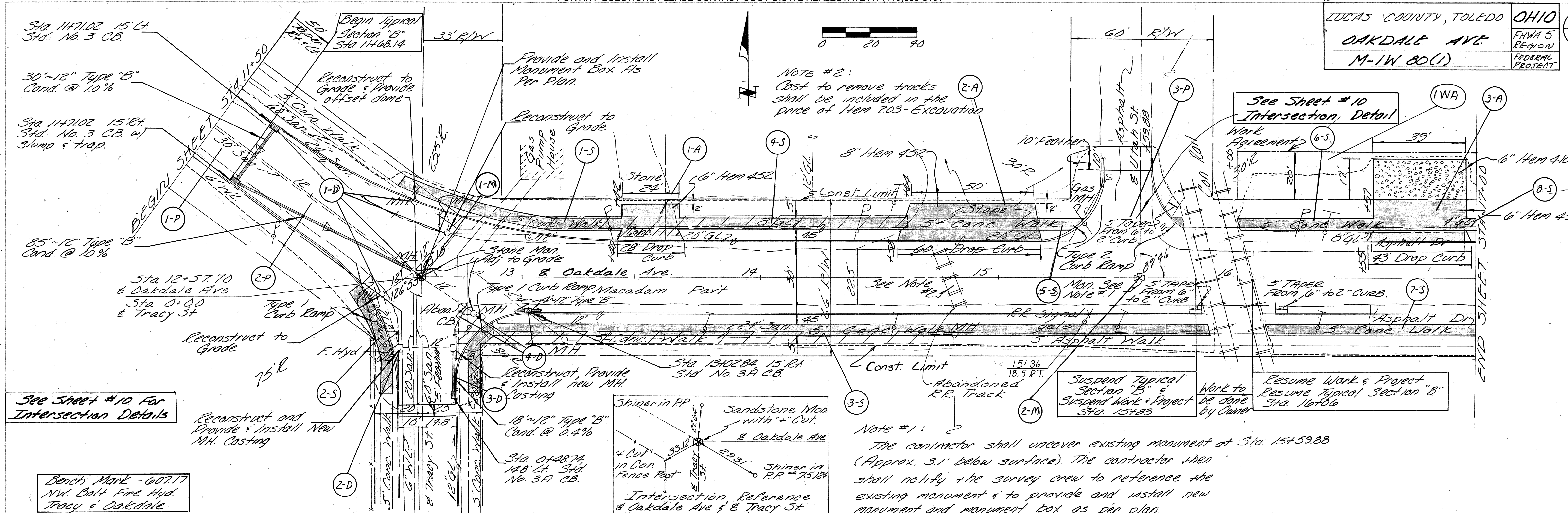


Bench Mark - 595.89
R.R. Spk in Power Pole
Sta 5+70 Lt.

NOTE:
Connect existing 12" sewer into the CB Sta. 6+50 Lt. with 4"-12" pipe. Existing elevation of the sewer is unknown. The contractor should locate this pipe to line and grade and set grade in the field.

Bench Mark - 597.98
USGS BM# X-312
STA 9+61.7, 29.5' Rt.
Given elev. 597.80

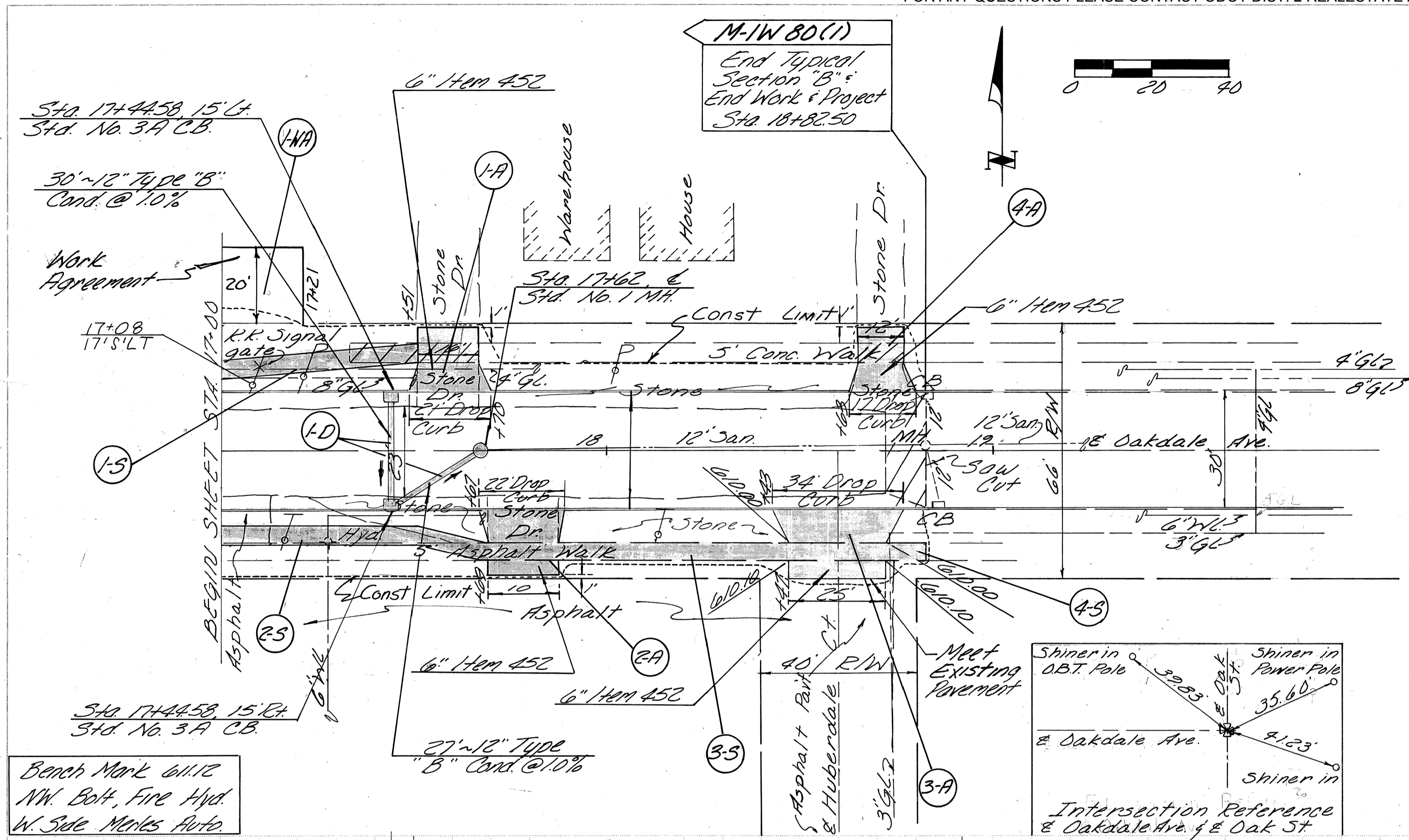




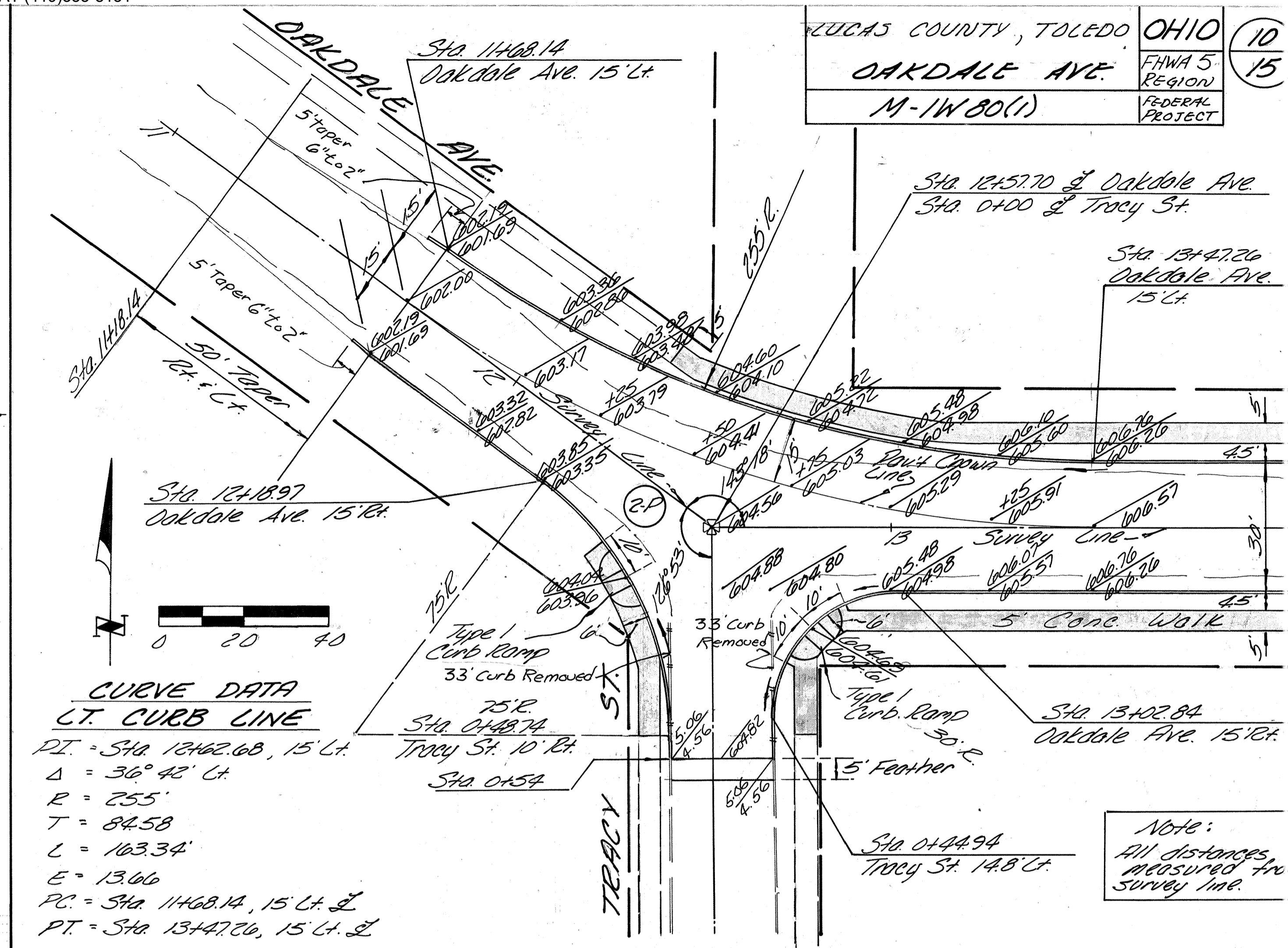
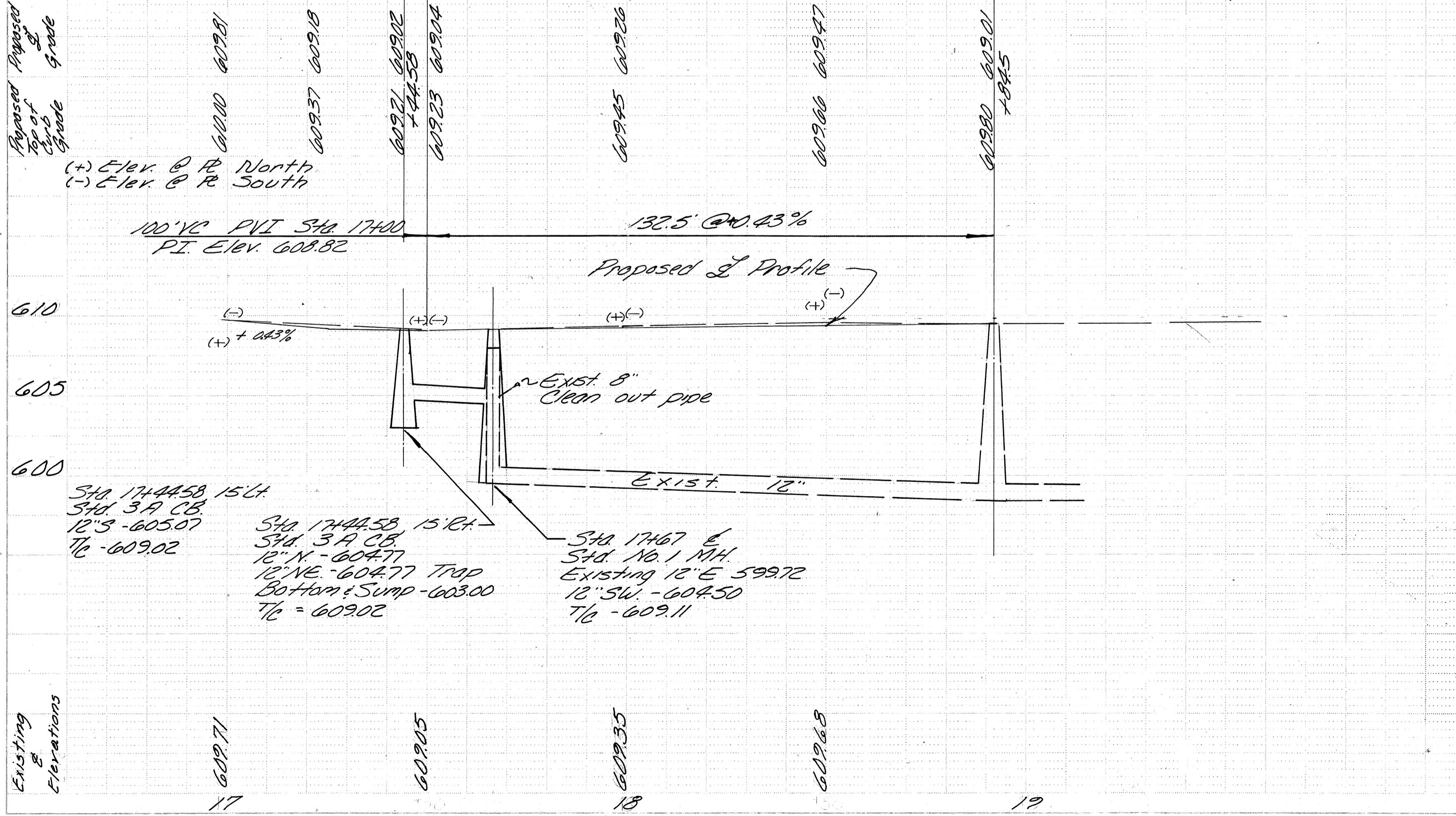
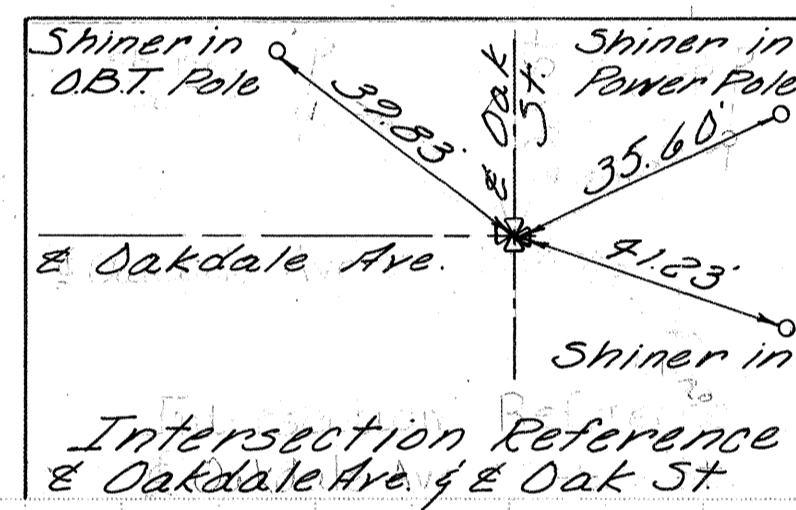
PLAN
DATE: _____
BY: _____
CHECKED: _____
NOTE: BLOCK, REVISIONS, CHANGES, ETC. MUST BE NOTED.
STRUCTURE NOTATIONS: INTERFERE.

DATE	BY	REVISION

DATE	BY	REVISION

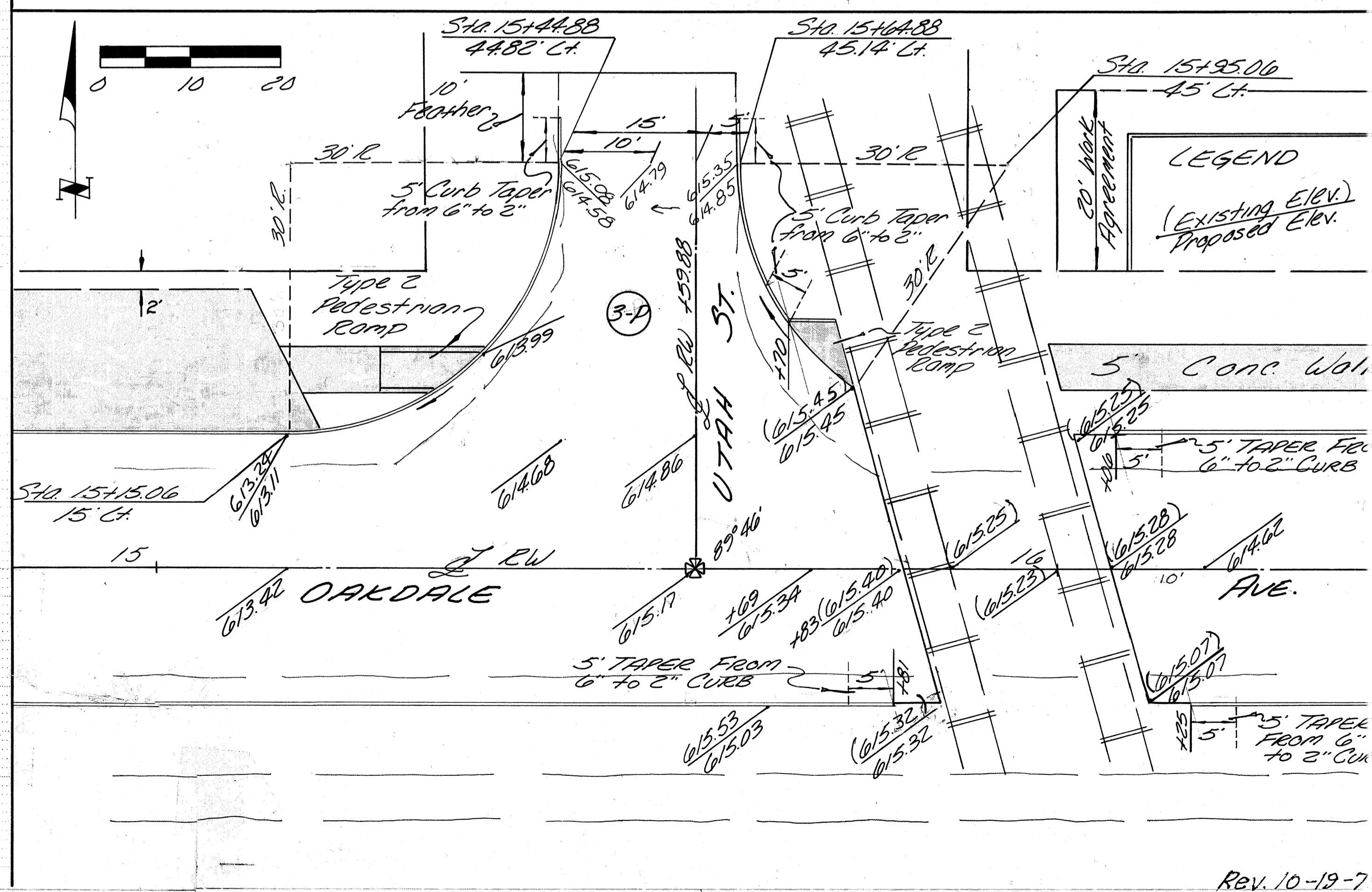


Bench Mark 61112
 NW. Bolt, Fire Hyd.
 W. Side Marks Auto.



CURVE DATA
LT. CURB LINE
 PI = Sta. 12+62.68, 15' Lt.
 Δ = 36° 48' Lt.
 R = 255'
 T = 84.58'
 L = 163.34'
 E = 13.66'
 PC = Sta. 11+68.14, 15' Lt. &
 Tracy St. 10' Rt.
 PT = Sta. 13+47.20, 15' Lt. &
 Tracy St. 10' Rt.

Note:
 All distances
 measured from
 survey line.

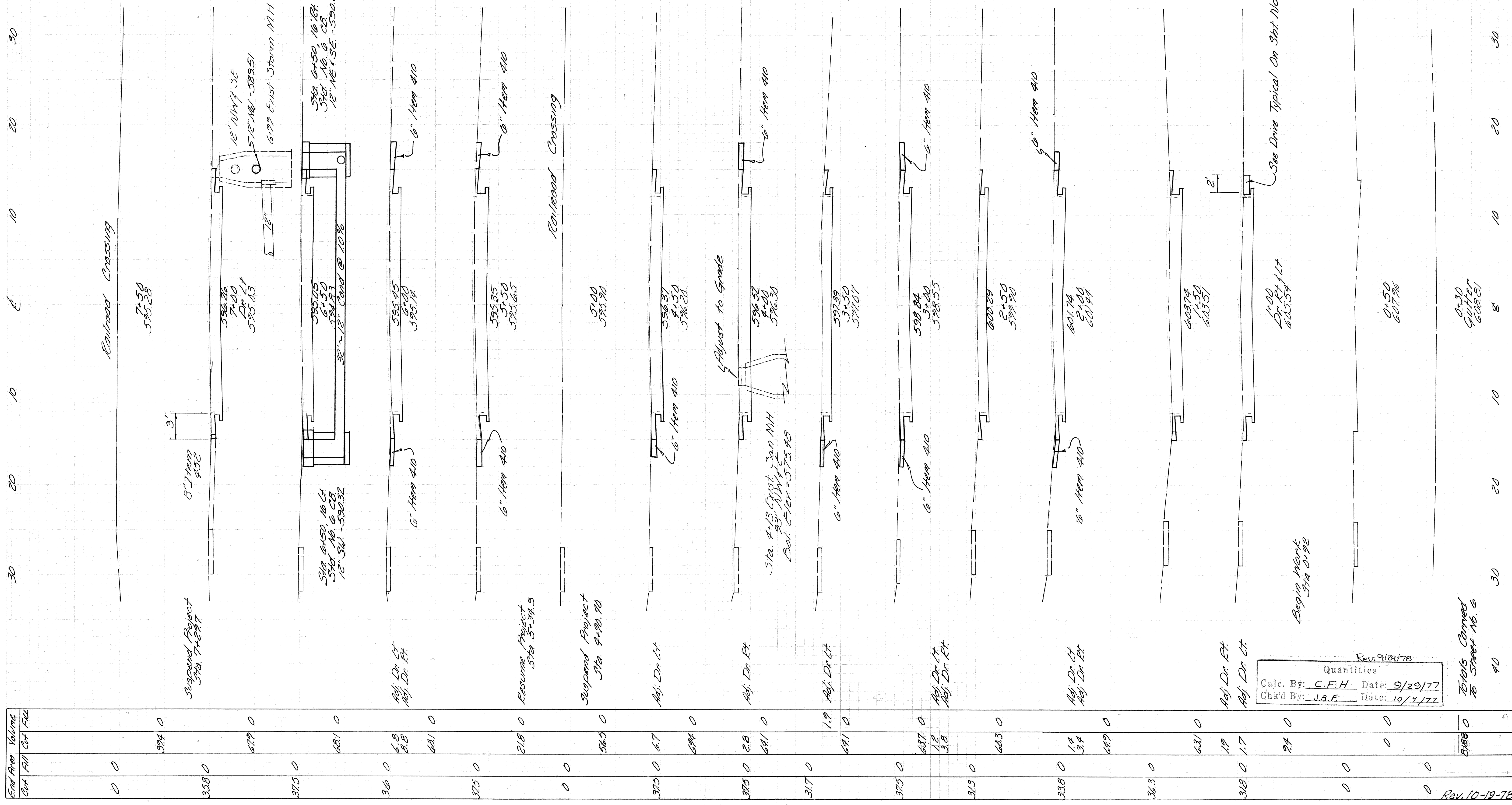


LEGEND
 (Existing Elev.)
 Proposed Elev.

LUCAS COUNTY, TOLEDO
OAKDALE AVENUE
M-1W80(1)

DHID
FHWA 5
REGION
FEDERAL
PROJECT

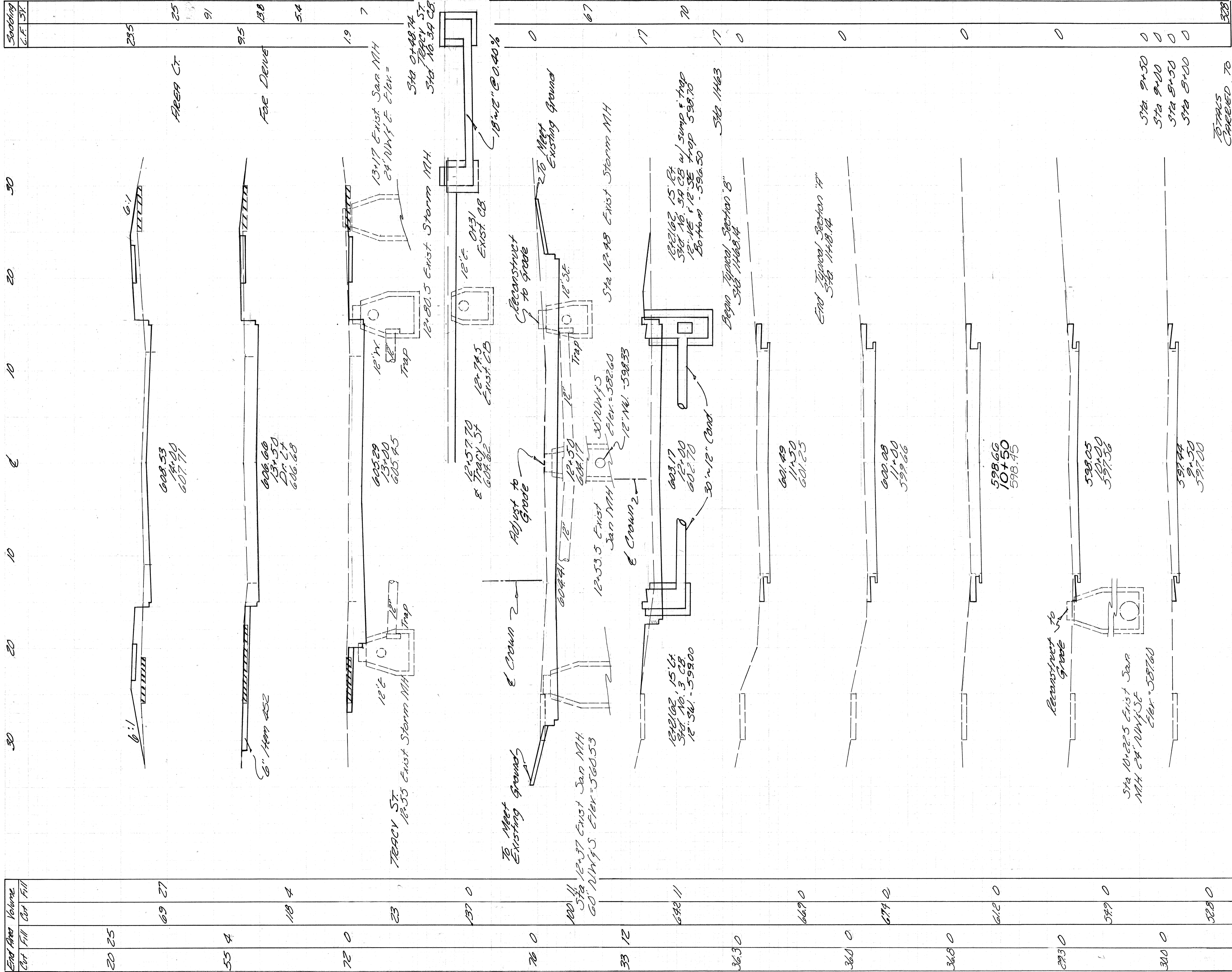
11
15



Rev. 9/29/78

Quantities	
Calc. By: C.F.H.	Date: 9/29/77
Chkd. By: J.A.E.	Date: 10/4/77

Details Covered
to Sheet 16.6



End Area	Vol. Cut	Vol. Fill
20	25	27
55	4	18
72	0	23
76	0	137
33	12	642
36.3	0	669
36.0	0	674
36.8	0	612
293	0	599
300	0	328
270	0	3.3
335	0	46
0	0	484
0	0	0
0	0	226
0	0	53

OAKDALE AVE. STA 8+00 TO STA 14+00

Quantities	
Calc. By: C.F.H.	Date: 9/29/77
Chk'd By: J.A.F.	Date: 10/4/77

LUCAS COUNTY, TOLEDO
OAKDALE AVENUE
M-1W80(1)

OHIO
FEDERAL
PROJECT

12
15

TOTALS
CHECKED TO
SHEET #6

8+22.5 EXIST. STORM MH 12"
Sta 8+22.5
12" SW. Trap - 589.00
Bottom - 589.00
12+20.5 EXIST. STORM MH 12"
Sta 12+20.5
12" SW. Trap - 582.60
Bottom - 582.60
12+17 EXIST. STORM MH 12"
Sta 12+17
12" SW. Trap - 582.60
Bottom - 582.60
12+20.5 EXIST. STORM MH 12"
Sta 12+20.5
12" SW. Trap - 582.60
Bottom - 582.60

8+22.5 EXIST. C.B. 23"
Sta 8+22.5
15" SW. Trap - 590.48
Bottom - 590.48

8+22.5 EXIST. C.B. 23"
Sta 8+22.5
15" SW. Trap - 590.48
Bottom - 590.48

8+22.5 EXIST. C.B. 23"
Sta 8+22.5
15" SW. Trap - 590.48
Bottom - 590.48

8+22.5 EXIST. C.B. 23"
Sta 8+22.5
15" SW. Trap - 590.48
Bottom - 590.48

8+22.5 EXIST. C.B. 23"
Sta 8+22.5
15" SW. Trap - 590.48
Bottom - 590.48

8+22.5 EXIST. C.B. 23"
Sta 8+22.5
15" SW. Trap - 590.48
Bottom - 590.48

8+22.5 EXIST. C.B. 23"
Sta 8+22.5
15" SW. Trap - 590.48
Bottom - 590.48

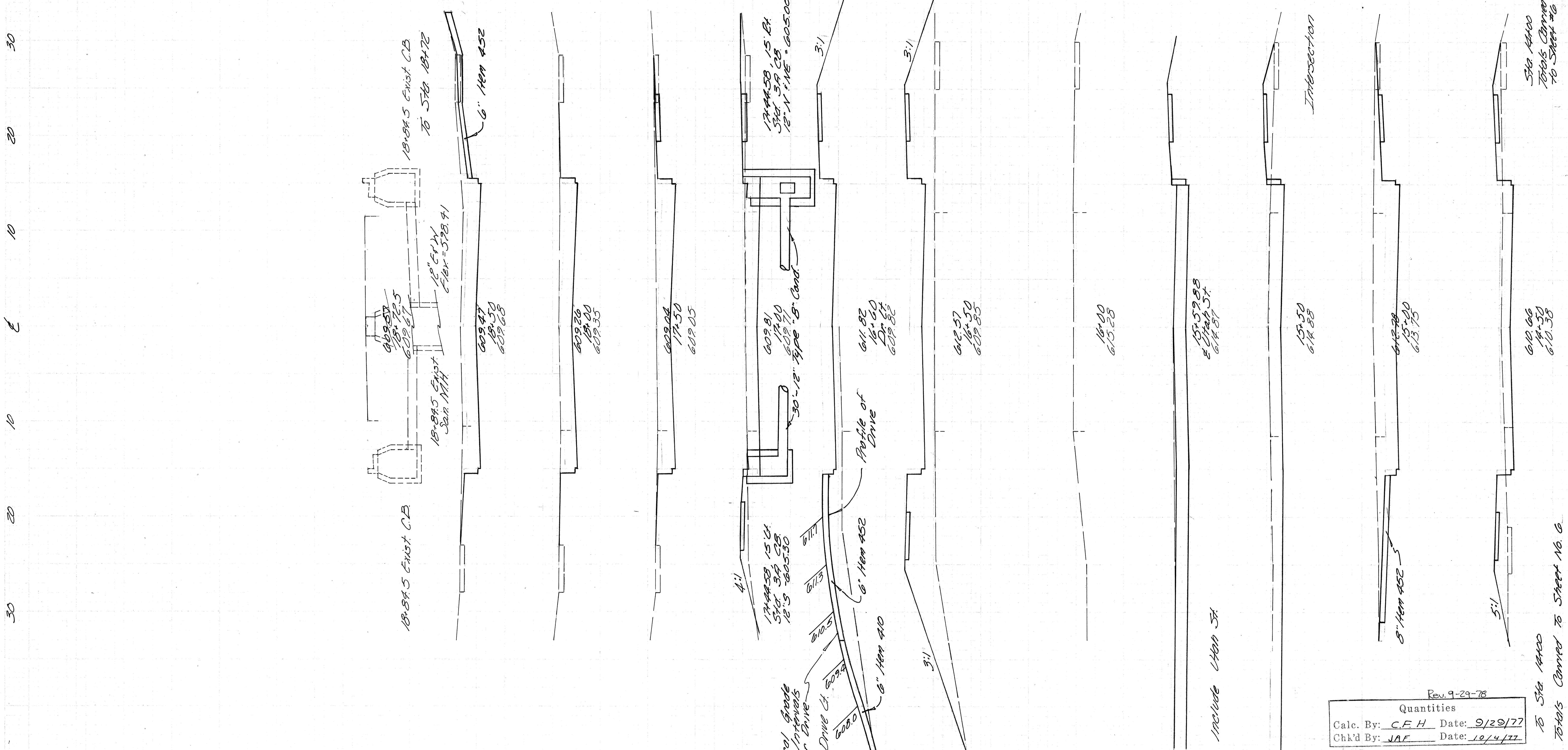
8+22.5 EXIST. C.B. 23"
Sta 8+22.5
15" SW. Trap - 590.48
Bottom - 590.48

8+22.5 EXIST. C.B. 23"
Sta 8+22.5
15" SW. Trap - 590.48
Bottom - 590.48

LUCAS COUNTY, TOLEDO
 OHIO
 OHIO REGION
 FEDERAL PROJECT

13
 15

Stationing	CF	SV
48	7.5	
64	15.5	
80	23	
107	40.5	
113	0	
125	9.5	
142	9.5	
158	18	
175	87.5	



End Area	Volume	Cut	Fill	Cut	Fill
67	0				
49	0			107	0
36	0			97	0
42	8			91	7
0	30			0	19
0	142			0	131
0	0			0	54
58	0			19	13
70	14			60	13
103	0			22	23
29	25			46	46
				835	429

Rev. 9-29-78
 Quantities
 Calc. By: C.F.H. Date: 9/29/77
 Chkd By: J.A.F. Date: 10/4/77