

FED. AID DIST. NO.	STATE	FED. AID PROJECT	FISCAL YEAR
10	OHIO	471-C	1928

S.H. (I.C.H.) 56 SECTION A
LUCAS COUNTY.

STATE OF OHIO
 DEPARTMENT OF HIGHWAYS
JERUSALEM ROAD
 S.H. (I.C.H.) No 56 SECTION A PET. No 6654
LUCAS COUNTY
 OREGON TOWNSHIP MAR. 1929.

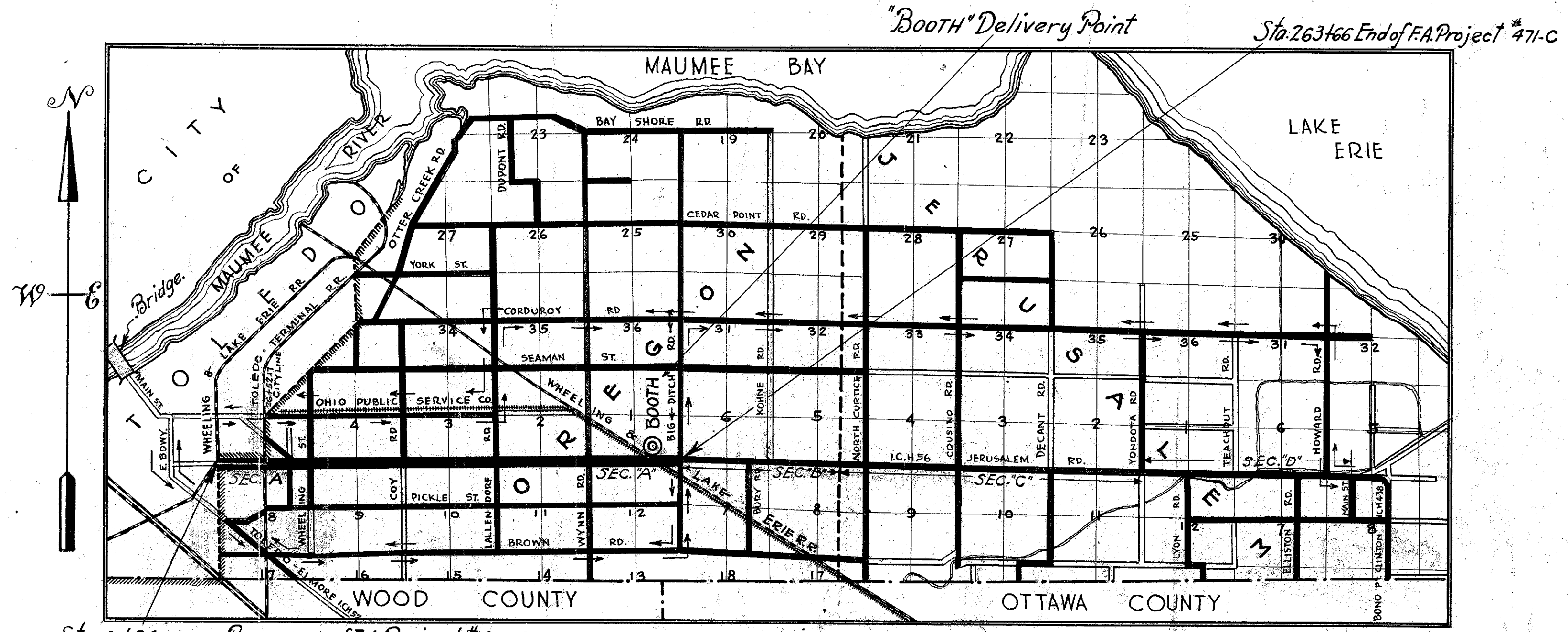
Ret May 8 - 1929
Ret May 27 - 29

The Standard Specifications of the State of Ohio, Department of Highways, in force on date of Contract will govern this improvement

I, hereby approve these plans and declare that the making of this improvement will require the closing to traffic of the highway and that detours will be provided as shown on the plan and estimates.

CONVENTIONAL SIGNS

State Line	----
County Line	-----
Township Line	-----
Section Line	-----
Property Line (not fenced)	-----
Center Line	o-----o
City or Village Line	-----
Fence	x x x
Telephone or Telegraph	--- --- ---
Steam Railroad	==== ==== ====
Electric Line
Guard Rail	-----
Drain Pipe New	-----
Drain Pipe Old	-----
Sanitary Line	-----
Water Line	-----
Gas Line	-----



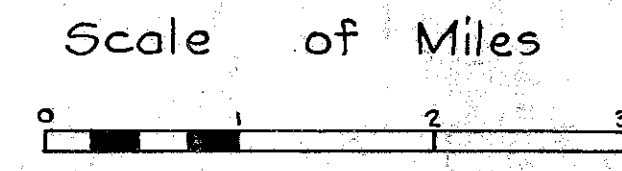
We, the Commissioners of Lucas County, do hereby approve these plans and certify that the right of way 60 ft. min. width is available for the construction, maintenance and repair of the above highway

Roy E. Davis
R. J. Grammitt
J. W. Winter

Date 3/25/29 County Commissioners

Sta. 0+26 - Beginning of F.A. Project #471-C.
 Sta. 0+26 - Beginning of Project.
 See note sheet #2 relative to Federal, State & County participation.

LOCATION PLAN



SCALES

PLAN	1" = 50'
PROFILE VERTICAL	1" = 10'
PROFILE HORIZONTAL	1" = 50'
CROSS SECTIONS	1" = 5'

PORTION TO BE IMPROVED.	=====
DETOURS SHOWN THUS.	====>>>====
IMPROVED ROADS.	====<<<====

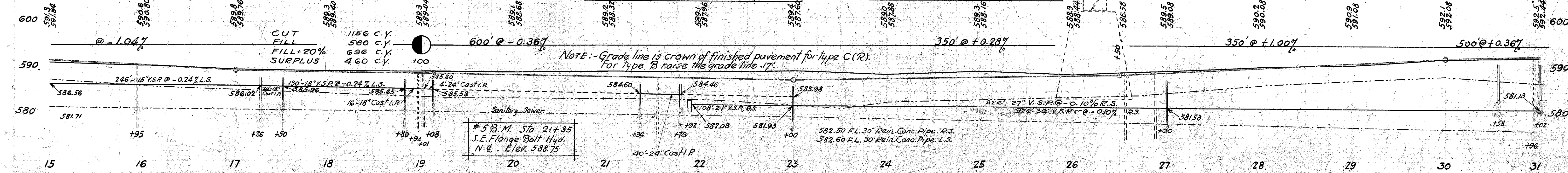
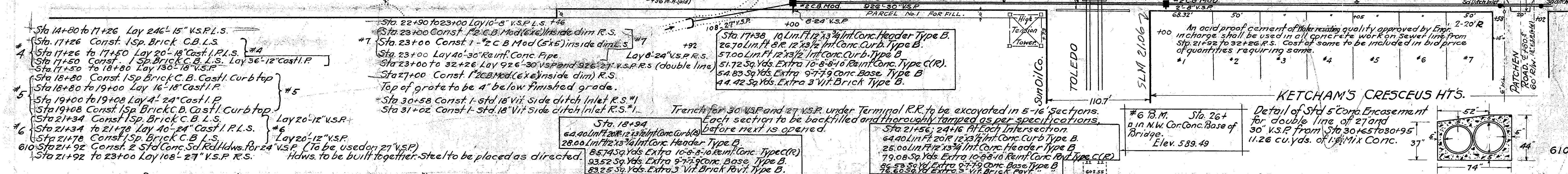
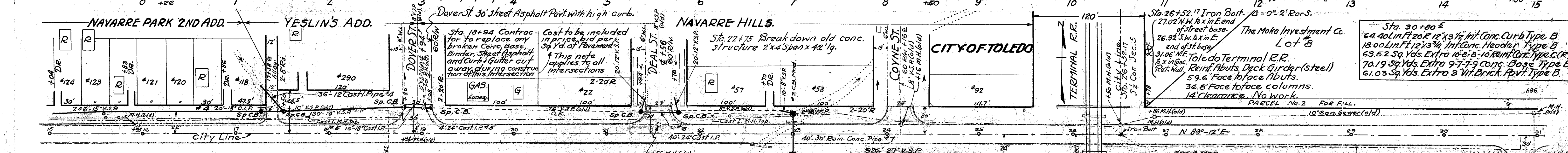
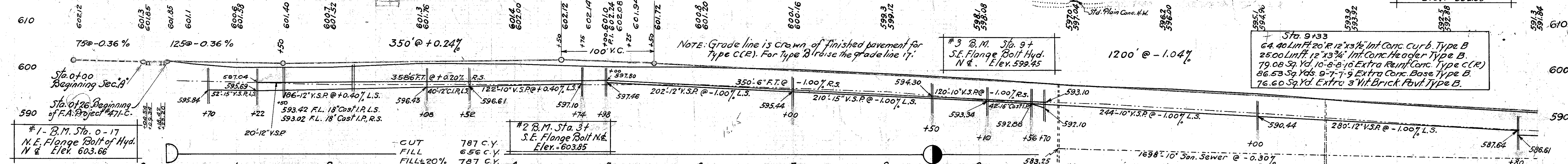
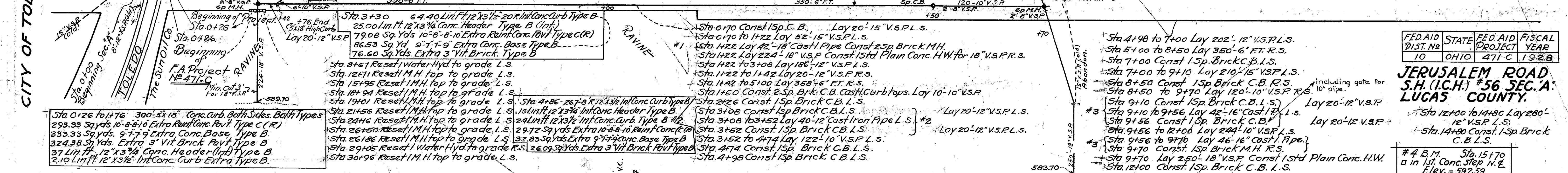
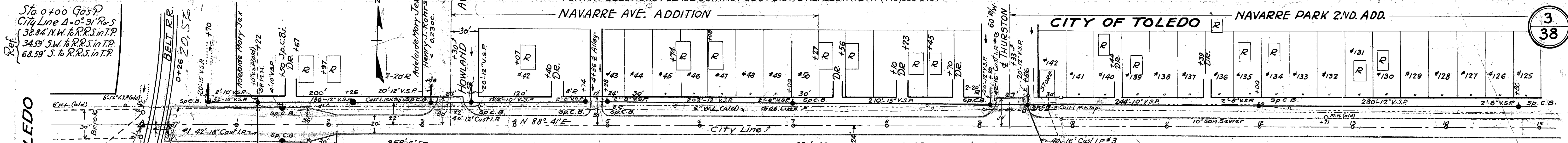
INDEX OF SHEETS.

TITLE PAGE.	1
TYPICAL CROSS SECTIONS.	2
PLANS & PROFILE.	3 - 11 incl.
SPECIAL DETAILS.	12
CROSS SECTIONS.	13 - 26 incl.
STRUCTURAL PLANS.	27 - 30 incl.
PUMPHOUSE PLANS.	31 - 35 incl.
SUMMARY SHEETS.	36 - 38 incl.

SUPPLEMENTAL PRINTS OF STRUCTURAL STANDARDS.
 DRAWINGS No. 95, 98, 100, 130, 300, 305.

CONSTRUCTION BUREAU
 JUN 30 1925
 GROUND PHOTOLAB

- Approved *C. L. Sawyer*
 Date 3-25-29 Resident District Deputy Director
- Approved *John F. Hallier*
 Date 4-5-29 Resident Division Deputy Director
- Approved *Wm. B. Roehrig*
 Date 5-6-29 Chief Engineer
 Bureau of Construction
- Approved _____
 Date _____ Chief Engineer
 Bureau of Maintenance
- Approved _____
 Date _____ Chief Engineer
 Bureau of Bridges
- Approved *Robt. D. Baighter*
 Date 5-7-29 Chief Engineer
- Approved *Robt. W. Ward*
 Date 5-7-29 Director of Highways
- Approved _____
 Date _____ District Engineer
 Bureau of Public Roads.
- Approved _____
 Date _____ Chief Engineer
 Bureau of Public Roads.
- Approved _____
 Date _____ Chief of Bureau.



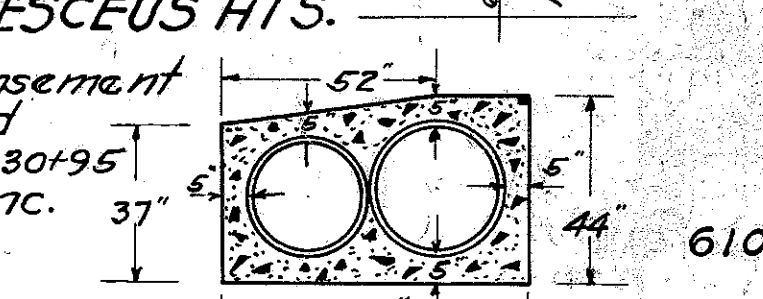
FED. AID DIST. NO.	STATE	FED. AID PROJECT	FISCAL YEAR
10	OHIO	471-C	1928

JERUSALEM ROAD S.H. (I.C.H.) #56 SEC. A LUCAS COUNTY.

Sta. 12+00 to 14+80 Lay 280'-12" V.S.P. L.S.
Sta. 14+80 Const. 1 Sp. Brick C.B. L.S.

#4 B.M. Sta. 15+70
in 1st Conc. Slab N.E.
Elev. = 592.59

Sta. 17+38	10 Lin. Ft. 12"x3 1/2" Int. Conc. Header Type B.
Sta. 17+38	26.70 Sq. Yds. Extra 10'-8"-10" Reinf. Conc. Type C(R).
Sta. 17+38	51.72 Sq. Yds. Extra 9'-7"-9" Conc. Base Type B.
Sta. 17+38	54.83 Sq. Yds. Extra 3 Vit. Brick Pavt. Type B.



Sta. 0+00 Gas P
City Line A=0°31'R.S.
38.84' N.W. to R.R.S. in T.P.
34.59' S.W. to R.R.S. in T.P.
68.59' S. to R.R.S. in T.P.

CITY OF TOLEDO

NAVARRA PARK 2ND. ADD.

NAVARRA AVE. ADDITION

CITY OF TOLEDO

RAVINE

NOTE: Grade line is crown of finished pavement for Type CCE. For Type B raise the grade line 17'.

Trench for 30" V.S.P. and 27" V.S.P. under Terminal R.R. to be excavated in 5-16' sections. Each section to be backfilled and thoroughly tamped as per specifications before next is opened.

An acid proof cement of water resisting quality approved by Engr. in charge shall be used in all concrete work on sewer line from Sta. 21+92 to 32+26 R.S. Cost of same to be included in bid price of quantities requiring same.

- Sta. 14+80 to 17+26 Lay 246'-15" V.S.P.L.S.
- Sta. 17+26 Const. 1 Sp. Brick C.B. L.S.
- Sta. 17+26 to 17+50 Lay 20'-18" Cast I.P.L.S.
- Sta. 17+50 Const. 1 Sp. Brick C.B. L.S.
- Sta. 17+50 to 18+00 Lay 130'-18" V.S.P.
- Sta. 18+00 Const. 1 Sp. Brick C.B. Castl. Curb top
- Sta. 18+00 to 19+00 Lay 16'-18" Cast I.P.
- Sta. 19+00 to 19+08 Lay 4'-24" Cast I.P.
- Sta. 19+08 Const. 1 Sp. Brick C.B. Castl. Curb top
- Sta. 21+34 Const. 1 Sp. Brick C.B. L.S.
- Sta. 21+34 to 21+78 Lay 40'-24" Cast I.P.L.S.
- Sta. 21+78 Const. 1 Sp. Brick C.B. L.S.
- Sta. 21+78 Const. 2 Std. Conc. Sd. Rd. Hdws. for 24" V.S.P. (To be used on 27" V.S.P.)
- Sta. 21+92 to 23+00 Lay 108'-27" V.S.P. R.S.

- Sta. 22+90 to 23+00 Lay 10'-8" V.S.P.L.S. +46
- Sta. 23+00 Const. 1 2" C.B. Mod. (6x6) inside dim R.S.
- Sta. 23+00 Const. 1-2" C.B. Mod. (5x5) inside dim R.S.
- Sta. 23+00 Lay 40'-30" Reinf. Conc. Pipe Lay 8'-24" V.S.P. R.S.
- Sta. 23+00 to 32+26 Lay 926'-29" V.S.P. R.S. (double line)
- Sta. 27+00 Const. 1 2" C.B. Mod. (6x6) inside dim R.S.
- Top of grate to be 4" below finished grade.
- Sta. 30+58 Const. 1-std. 18" Vit. Side ditch Inlet R.S. #1
- Sta. 31+02 Const. 1-std. 18" Vit. Side ditch Inlet R.S. #1

- Sta. 17+38 10 Lin. Ft. 12"x3 1/2" Int. Conc. Header Type B.
- Sta. 17+38 26.70 Sq. Yds. Extra 10'-8"-10" Reinf. Conc. Type C(R).
- Sta. 17+38 51.72 Sq. Yds. Extra 9'-7"-9" Conc. Base Type B.
- Sta. 17+38 54.83 Sq. Yds. Extra 3 Vit. Brick Pavt. Type B.
- Sta. 17+38 44.42 Sq. Yds. Extra 3 Vit. Brick Pavt. Type B.

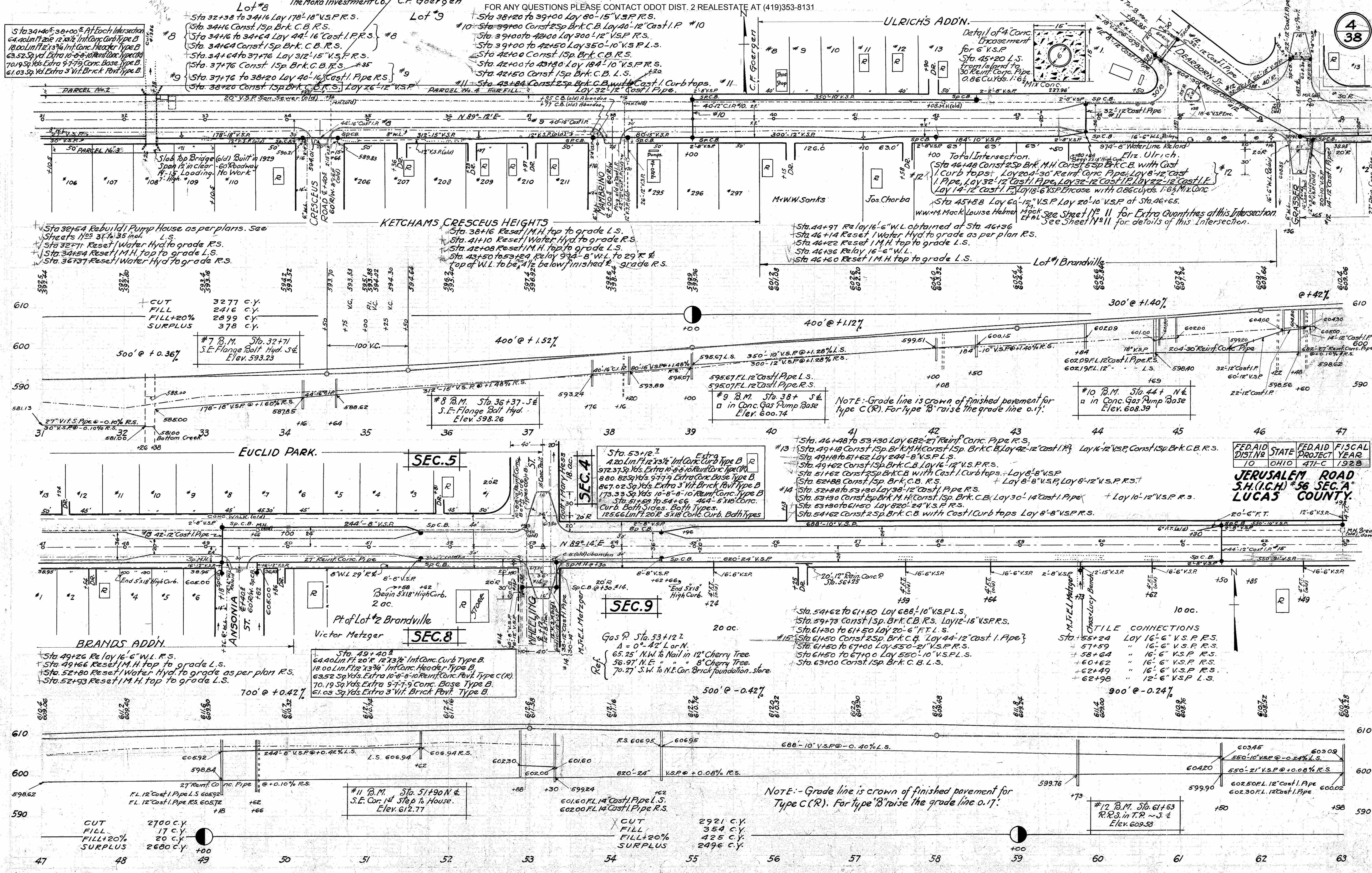
- Sta. 21+56 24+16 Ft. Each Intersection 64.40 Lin. Ft. 20" 12"x3 1/2" Int. Conc. Curb Type B.
- Sta. 21+56 25.00 Lin. Ft. 20" 12"x3 1/2" Int. Conc. Header Type B.
- Sta. 21+56 79.08 Sq. Yds. Extra 10'-8"-10" Reinf. Conc. Type C(R).
- Sta. 21+56 70.19 Sq. Yds. Extra 9'-7"-9" Conc. Base Type B.
- Sta. 21+56 61.03 Sq. Yds. Extra 3 Vit. Brick Pavt. Type B.

CUT 1156 C.Y.
FILL 580 C.Y.
FILL +20% 696 C.Y.
SURPLUS 460 C.Y.

NOTE: Grade line is crown of finished pavement for Type C(R). For Type B raise the grade line 17'.

#5 B.M. Sta. 21+35
S.E. Flange Bolt Hyd.
N.E. Elev. 588.75

#6 B.M. Sta. 26+
in N.W. Cor. Conc. Base of
Bridge
Elev. 589.49



Sta. 34+40 to 38+00 At Each Intersection
 64.40 Lin Ft. 12"x12" Int. Conc. Curb Type B
 18.00 Lin Ft. 12"x12" Int. Conc. Header Type B
 63.52 Sq. Yds. Extra 10'-8" Rein. Conc. Pavt. Type C
 70.19 Sq. Yds. Extra 9'-7" Conc. Base Type B
 61.03 Sq. Yds. Extra 3" Vit. Brick Pavt. Type B

Lot #8 The Moka Investment Co. C.F. Goergen
 Sta. 32+38 to 34+16 Lay 17'-18" V.S.P.R.S.
 Sta. 34+16 Const. 1 Sp. Brk. C.B.R.S.
 Sta. 34+64 Const. 1 Sp. Brk. C.B.R.S.
 Sta. 34+64 to 37+76 Lay 31/2" V.S.P.R.S.
 Sta. 37+76 Const. 1 Sp. Brk. C.B.R.S.
 Sta. 37+76 to 38+20 Lay 4'-16" Cast. I. Pipe R.S.
 Sta. 38+20 Const. 1 Sp. Brk. C.B.R.S. Lay 2'-12" V.S.P.

Lot #9 C.F. Goergen
 Sta. 38+20 to 39+00 Lay 8'-15" V.S.P.R.S.
 Sta. 39+00 Const. 2 Sp. Brk. C.B. Lay 4'-12" Cast. I. P. #10
 Sta. 39+00 to 42+00 Lay 3'-12" V.S.P.R.S.
 Sta. 39+00 to 42+50 Lay 3'-10" V.S.P.L.S.
 Sta. 42+00 Const. 1 Sp. Brk. C.B.R.S.
 Sta. 42+00 to 43+80 Lay 18'-10" V.S.P.R.S.
 Sta. 42+50 Const. 1 Sp. Brk. C.B. L.S.
 Sta. 43+84 Const. 2 Sp. Brk. C.B. with Cast. I. Curb tops.
 Lay 32'-12" Cast. I. Pipe.

ULRICH'S ADDN.
 Detail of 4" Conc. Encasement for 6" V.S.P.
 Sta. 45+20 L.S. from Island to 30" Rein. Conc. Pipe
 0.86 Cu. Yds. 1'6" MIN Conc. 227.96'

Sta. 32+54 Rebuild Pump House as per plans. See Sheets N 25 31 to 35 incl. L.S.
 Sta. 32+71 Reset Water Hyd. to grade R.S.
 Sta. 34+54 Reset M.H. top to grade L.S.
 Sta. 36+37 Reset Water Hyd. to grade R.S.

KETCHAMS CRESCENS HEIGHTS
 Sta. 38+16 Reset M.H. top to grade L.S.
 Sta. 41+10 Reset Water Hyd. to grade R.S.
 Sta. 42+08 Reset M.H. top to grade L.S.
 Sta. 43+50 to 43+59 Relay 9'-4" W.L. to 29' R. top of W.L. to be 1/2" below finished grade R.S.

Total Intersection.
 Sta. 46+48 Const. 2 Sp. Brk. M.H. Const. 1 Sp. Brk. C.B. with Cast. I. Curb tops. Lay 20'-4" Rein. Conc. Pipe. Lay 8'-12" Cast. I. Pipe. Lay 32'-12" Cast. I. Pipe. Lay 32'-12" Cast. I. Pipe. Lay 14'-12" Cast. I. Pipe. Lay 18'-6" V.S.P. Encase with abacus. 1'6" Min. Conc.
 Sta. 45+8 B Lay 6'-12" V.S.P. Lay 20'-10" V.S.P. at Sta. 46+65.
 W.W. Mack Louise Helmer
 See Sheet N 11 for Extra Quantities at this Intersection.
 See Sheet N 11 for details of this Intersection.

CUT 3277 c.y.
 FILL+20% 2416 c.y.
 SURPLUS 2899 c.y.
 378 c.y.

#7 B.M. Sta. 32+71
 S.E. Flange Bolt Hyd. S.E.
 Elev. 593.23

#8 B.M. Sta. 36+37 S.E.
 S.E. Flange Bolt Hyd.
 Elev. 598.26

#9 B.M. Sta. 38+ S.E.
 in Conc. Gas Pump Base
 Elev. 600.74

#10 B.M. Sta. 44+ N.E.
 in Conc. Gas Pump Base
 Elev. 608.39

BRANDS ADDN.
 Sta. 49+26 Relay 16'-6" W.L. R.S.
 Sta. 49+66 Reset M.H. top to grade L.S.
 Sta. 52+80 Reset Water Hyd. to grade as per plan R.S.
 Sta. 52+93 Reset M.H. top to grade L.S.

Victor Metzger
 Sta. 49+40 B
 64.40 Lin Ft. 20"x12"x12" Int. Conc. Curb Type B
 18.00 Lin Ft. 12"x12" Int. Conc. Header Type B
 63.52 Sq. Yds. Extra 10'-8" Rein. Conc. Pavt. Type C (R)
 70.19 Sq. Yds. Extra 9'-7" Conc. Base Type B
 61.03 Sq. Yds. Extra 3" Vit. Brick Pavt. Type B

Gas P. Sta. 53+12.2
 A = 0°-42' L or N.
 65.25' N.W. to Nail in 12" Cherry Tree.
 56.97' N.E. " " 8" Cherry Tree.
 70.27' S.W. to N.E. Cor. Brick foundation. store.

Sta. 54+62 to 61+50 Lay 688'-10" V.S.P.L.S.
 Sta. 59+78 Const. 1 Sp. Brk. C.B. R.S. Lay 12'-15" V.S.P.R.S.
 Sta. 61+30 to 61+50 Lay 20'-6" F.T.L.S.
 Sta. 61+50 Const. 2 Sp. Brk. C.B. Lay 44'-12" Cast. I. Pipe
 Sta. 61+50 to 67+00 Lay 550'-21" V.S.P.R.S.
 Sta. 64+50 to 67+00 Lay 550'-10" V.S.P.L.S.
 Sta. 63+00 Const. 1 Sp. Brk. C.B. L.S.

CHASS-LUCY BANAL
 STA. 55+24 LAY 16'-6" V.S.P.R.S.
 + 57+59 " 16'-6" V.S.P.R.S.
 + 58+64 " 16'-6" V.S.P.R.S.
 + 60+62 " 16'-6" V.S.P.R.S.
 + 62+49 " 16'-6" V.S.P.R.S.
 + 62+98 " 12'-6" V.S.P. L.S.

CUT 2700 c.y.
 FILL 17 c.y.
 FILL+20% 20 c.y.
 SURPLUS 2680 c.y.

#11 B.M. Sta. 51+90 N.E.
 S.E. Cor. 1st Step to House.
 Elev. 612.77

CUT 2921 c.y.
 FILL 354 c.y.
 FILL+20% 425 c.y.
 SURPLUS 2496 c.y.

#12 B.M. Sta. 61+63
 R.R.S. in T.R. ~ S. E.
 Elev. 609.38

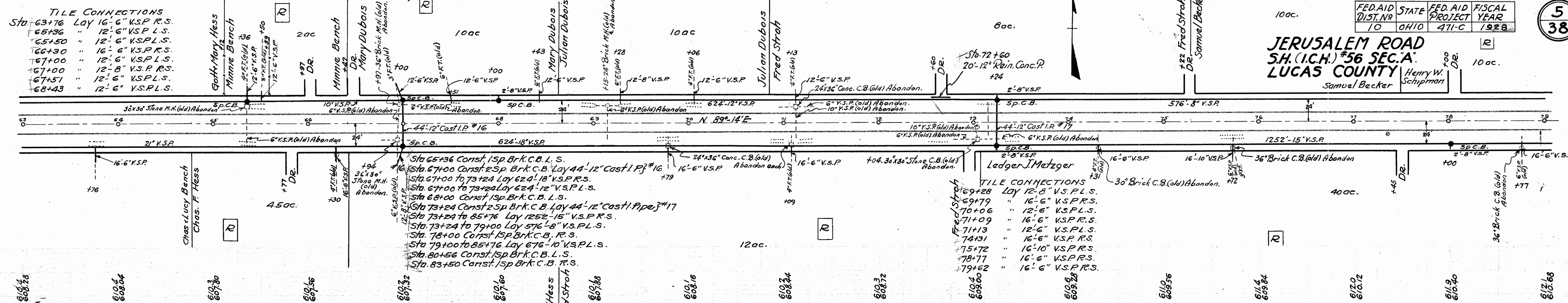
FED. AID DIST. NO.	STATE	FED. AID PROJECT	FISCAL YEAR
10	OHIO	471-C	1928

JERUSALEM ROAD
 S.H. (I.C.H.) #56 SEC. A
 LUCAS COUNTY.

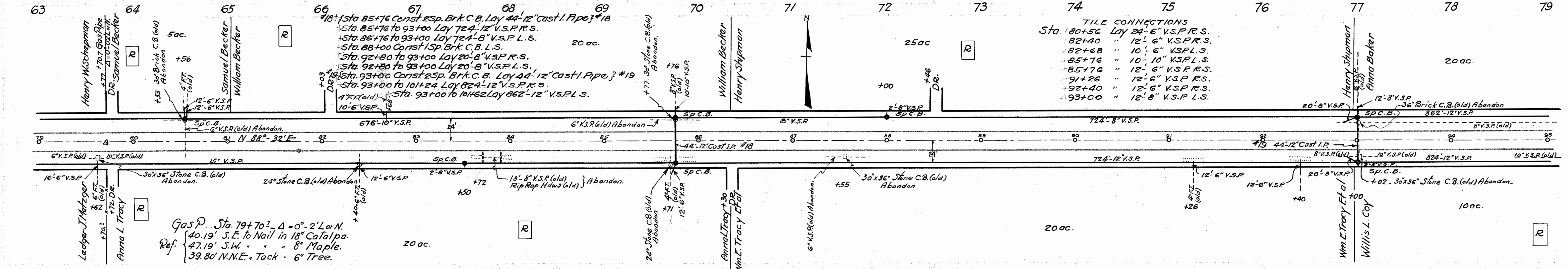
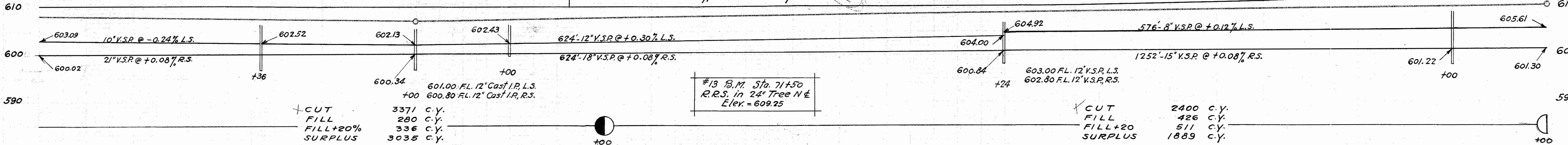
NOTE: - Grade line is crown of finished pavement for Type C (R). For type 'B' raise the grade line 0.17'

FED. AID DIST. NO.	STATE	FED. AID PROJECT	FISCAL YEAR
10	OHIO	471-C	1928

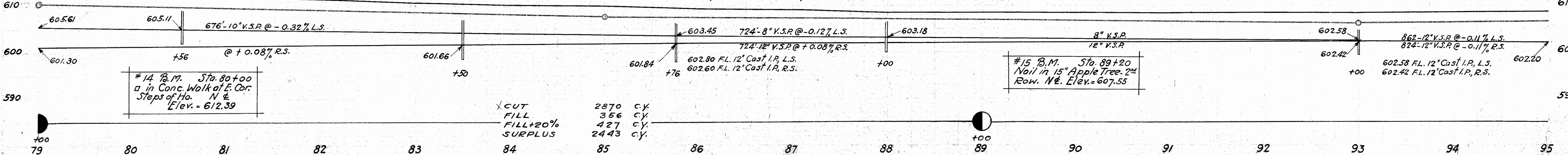
JERUSALEM ROAD
S.H. (I.C.H.) #56 SEC. A
LUCAS COUNTY



NOTE: Grade line is crown of finished pavement for type C(R). For type B raise the grade line 0.17'.



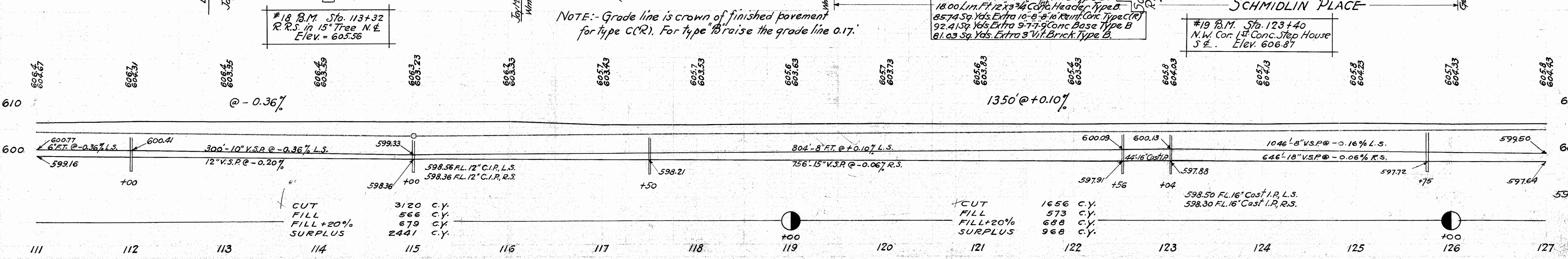
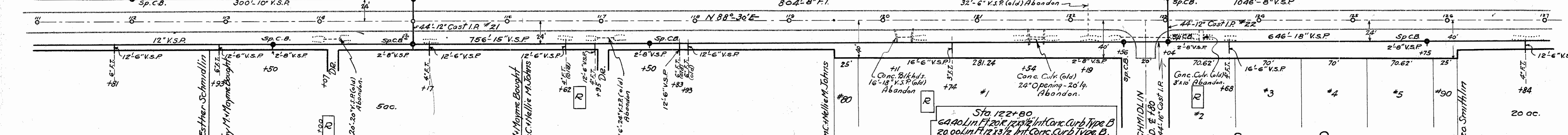
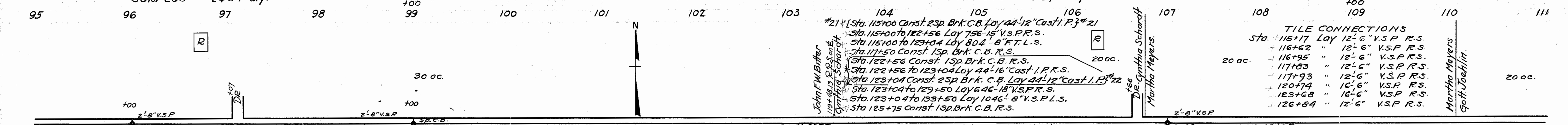
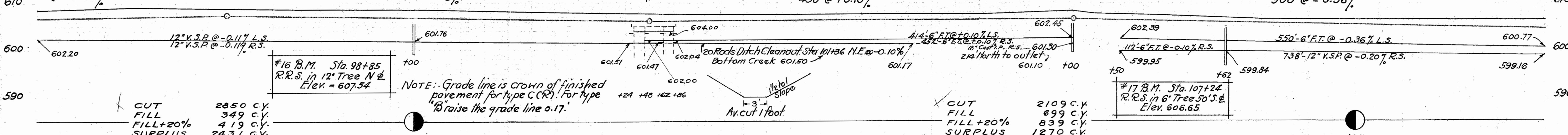
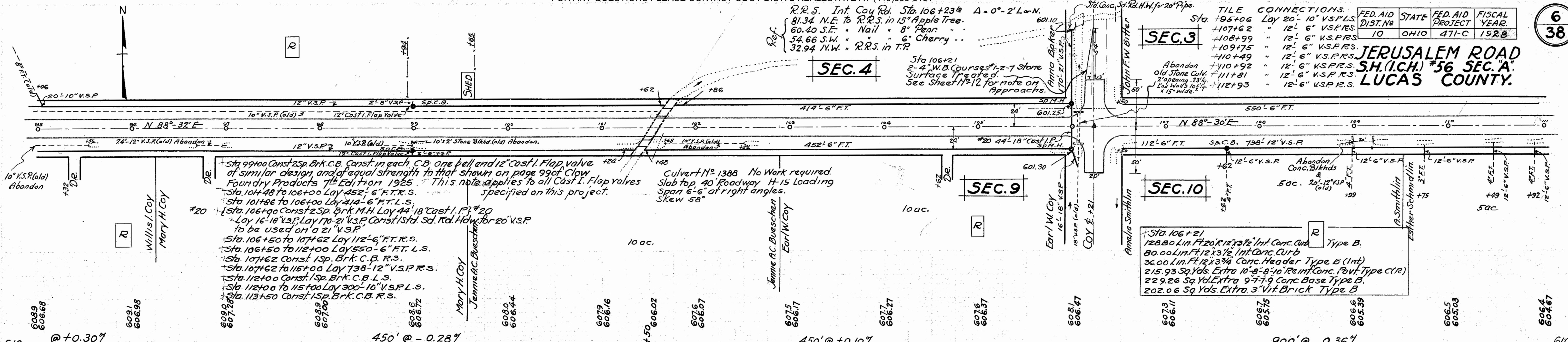
NOTE: Grade line is crown of finished pavement for type C(R). For type B raise the grade line 0.17'.



R.R.S. Int. Coy Rd. Sta. 106+23.4 Δ = 0° - 2' L-N.
81.34 N.E. to R.R.S. in 15' Apple Tree.
60.40 S.E. " Nail " 8' Pear ..
34.66 S.W. " " 6' Cherry ..
32.94 N.W. " R.R.S. in T.P.

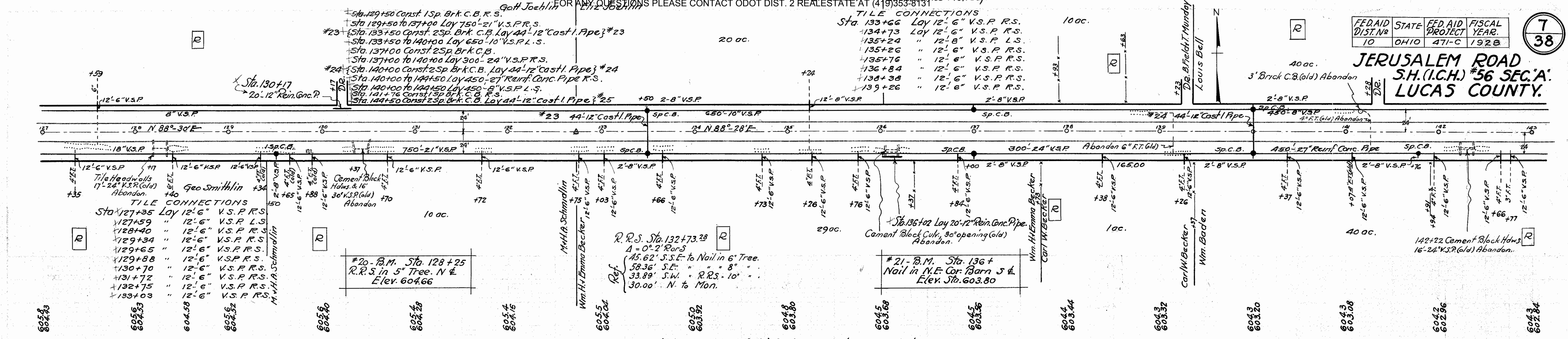
FED. AID DIST. NO.	STATE	FED. AID PROJECT	FISCAL YEAR.
10	OHIO	471-C	1928

JERUSALEM ROAD S.H.(I.C.H.) #56 SEC. A. LUCAS COUNTY.

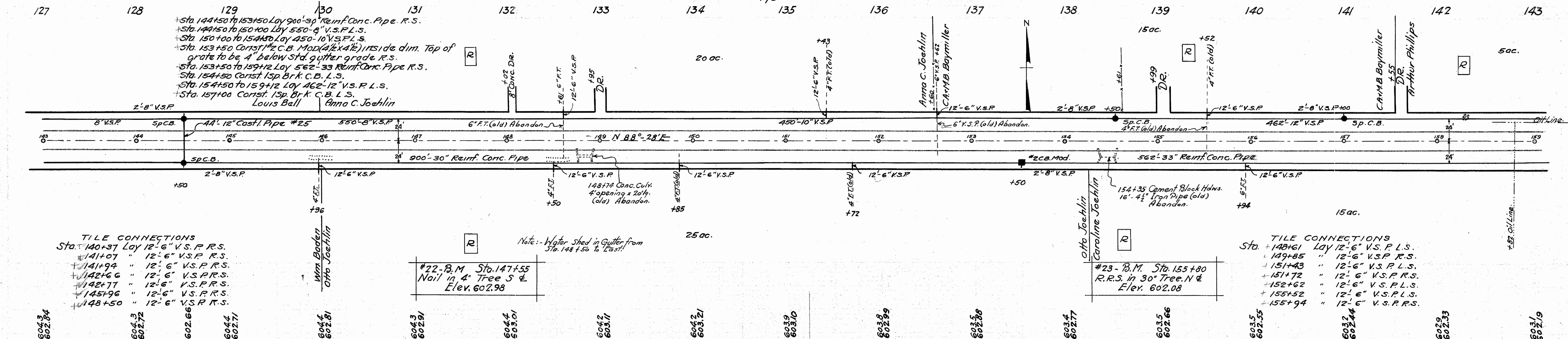
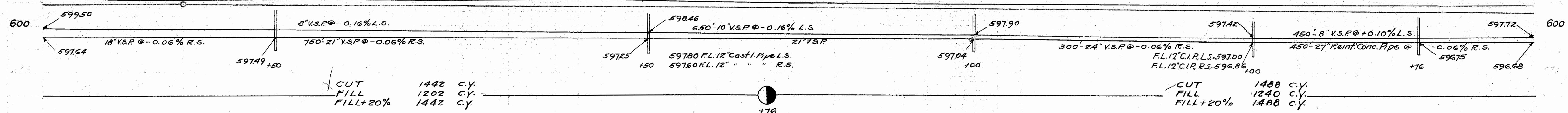


FED. AID DIST. NO.	STATE	FED. AID PROJECT	FISCAL YEAR.
10	OHIO	471-C	1928

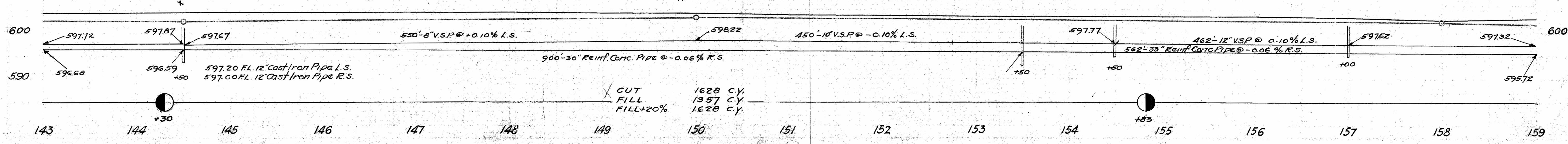
JERUSALEM ROAD S.H.(I.C.H.) #56 SEC. A LUCAS COUNTY.



NOTE: Grade line is crown of finished pavement for type C (R). For type "B" raise the grade line 0.17'.

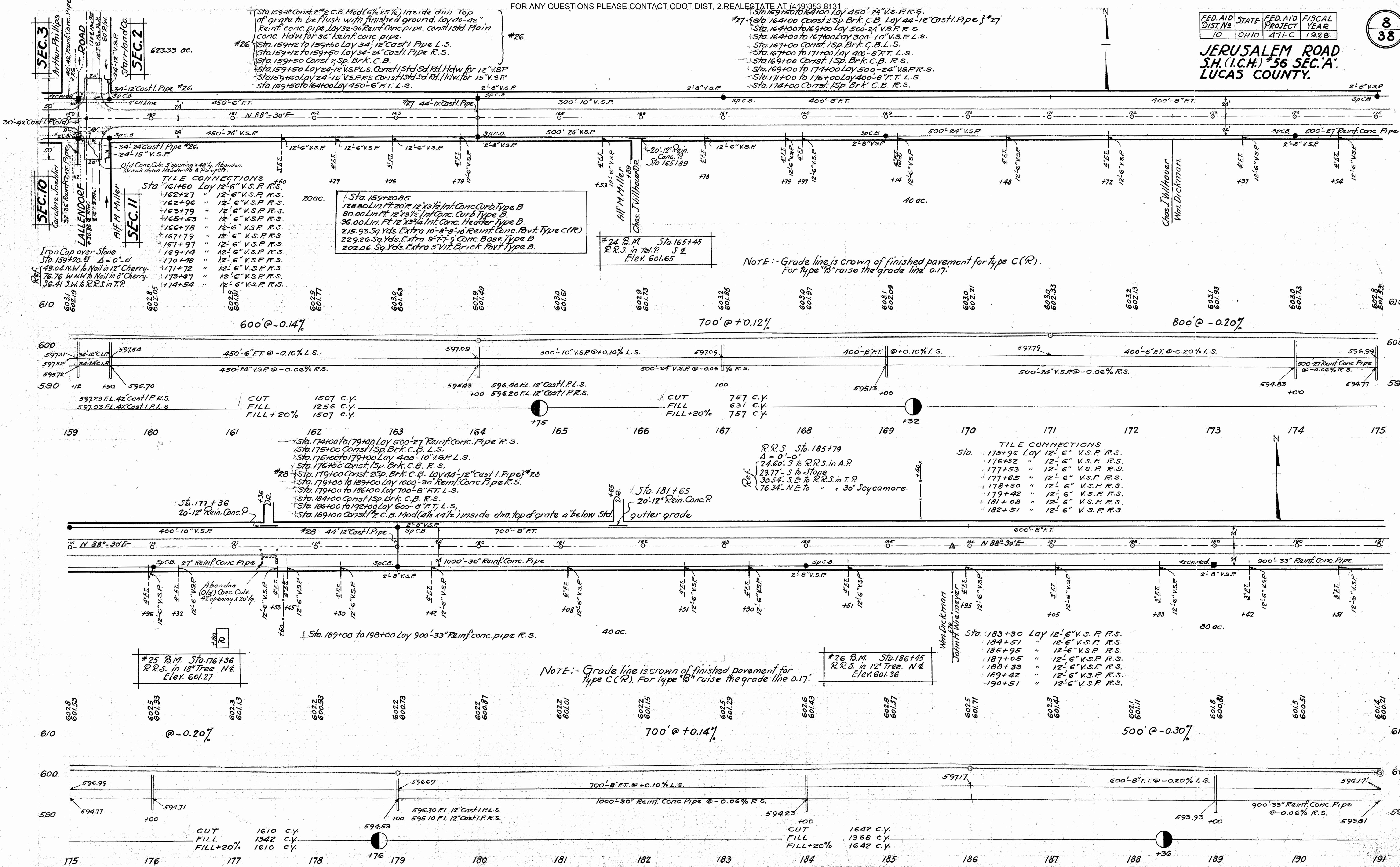


NOTE: - Grade line is crown of finished pavement for type C (R). For type "B" raise the grade line 0.17'.



FED. AID DIST. NO.	STATE	FED. AID PROJECT	FISCAL YEAR
10	OHIO	471-C	1928

JERUSALEM ROAD S.H. (I.C.H.) #56 SEC. 'A' LUCAS COUNTY.



Sta. 159+42 Const. 2" C.B. Mod (5/8" x 1/2") inside dim. Top of grate to be flush with finished ground. Lay 24"-22" Reinf. conc. pipe, Lay 32"-36" Reinf. Conc. Pipe, const. std. Plain conc. Hdwr. for 36" Reinf. conc. pipe.

Sta. 159+42 to 159+50 Lay 34"-12" Cast I. Pipe L.S.

Sta. 159+42 to 159+50 Lay 34"-24" Cast I. Pipe R.S.

Sta. 159+50 Const. 2 Sp. Brk. C.B.

Sta. 159+50 Lay 24"-12" vs. P.L.S. Const. 1 Std. Rd. Hdwr. for 12" V.S.P.

Sta. 159+50 Lay 24"-15" vs. P.R.S. Const. 1 Std. Rd. Hdwr. for 15" V.S.P.

Sta. 159+50 to 164+00 Lay 450"-6" F.T. L.S.

Sta. 159+50 to 164+00 Lay 450"-24" vs. P.R.S.

Sta. 164+00 Const. 2 Sp. Brk. C.B. Lay 44"-12" Cast I. Pipe } #27

Sta. 164+00 to 169+00 Lay 500"-24" V.S.P. R.S.

Sta. 164+00 to 167+00 Lay 300"-10" V.S.P. L.S.

Sta. 167+00 Const. 1 Sp. Brk. C.B. L.S.

Sta. 167+00 to 171+00 Lay 400"-8" F.T. L.S.

Sta. 169+00 Const. 1 Sp. Brk. C.B. R.S.

Sta. 169+00 to 174+00 Lay 500"-24" vs. P.R.S.

Sta. 171+00 to 175+00 Lay 400"-8" F.T. L.S.

Sta. 174+00 Const. 1 Sp. Brk. C.B. R.S.

TILE CONNECTIONS

Sta. 161+60	Lay 12"-6" V.S.P. R.S.
162+27	" 12"-6" V.S.P. R.S.
162+96	" 12"-6" V.S.P. R.S.
163+79	" 12"-6" V.S.P. R.S.
165+53	" 12"-6" V.S.P. R.S.
166+78	" 12"-6" V.S.P. R.S.
167+79	" 12"-6" V.S.P. R.S.
167+97	" 12"-6" V.S.P. R.S.
169+14	" 12"-6" V.S.P. R.S.
170+48	" 12"-6" V.S.P. R.S.
171+72	" 12"-6" V.S.P. R.S.
173+37	" 12"-6" V.S.P. R.S.
174+54	" 12"-6" V.S.P. R.S.

Sta. 159+20.85

128.80 Lin. Ft. 20" x 12" Int. Conc. Curb Type B

80.00 Lin. Ft. 12" x 12" Int. Conc. Curb Type B

36.00 Lin. Ft. 12" x 12" Int. Conc. Header Type B

215.93 Sq. Yds. Extra 10"-8"-10" Reinf. Conc. Pavt. Type C(R)

229.26 Sq. Yds. Extra 9"-7"-9" Conc. Base Type B

202.06 Sq. Yds. Extra 3" Vit. Brick Pavt. Type B.

#24 B.M. Sta. 165+45

R.R.S. in Tel. P. S & Elev. 601.65

NOTE: - Grade line is crown of finished pavement for type C(R). For type "B" raise the grade line 0.17.

#25 B.M. Sta. 176+36

R.R.S. in 18" Tree N.E. Elev. 601.27

NOTE: - Grade line is crown of finished pavement for type C(R). For type "B" raise the grade line 0.17.

#26 B.M. Sta. 186+45

R.R.S. in 12" Tree. N.E. Elev. 601.36

TILE CONNECTIONS

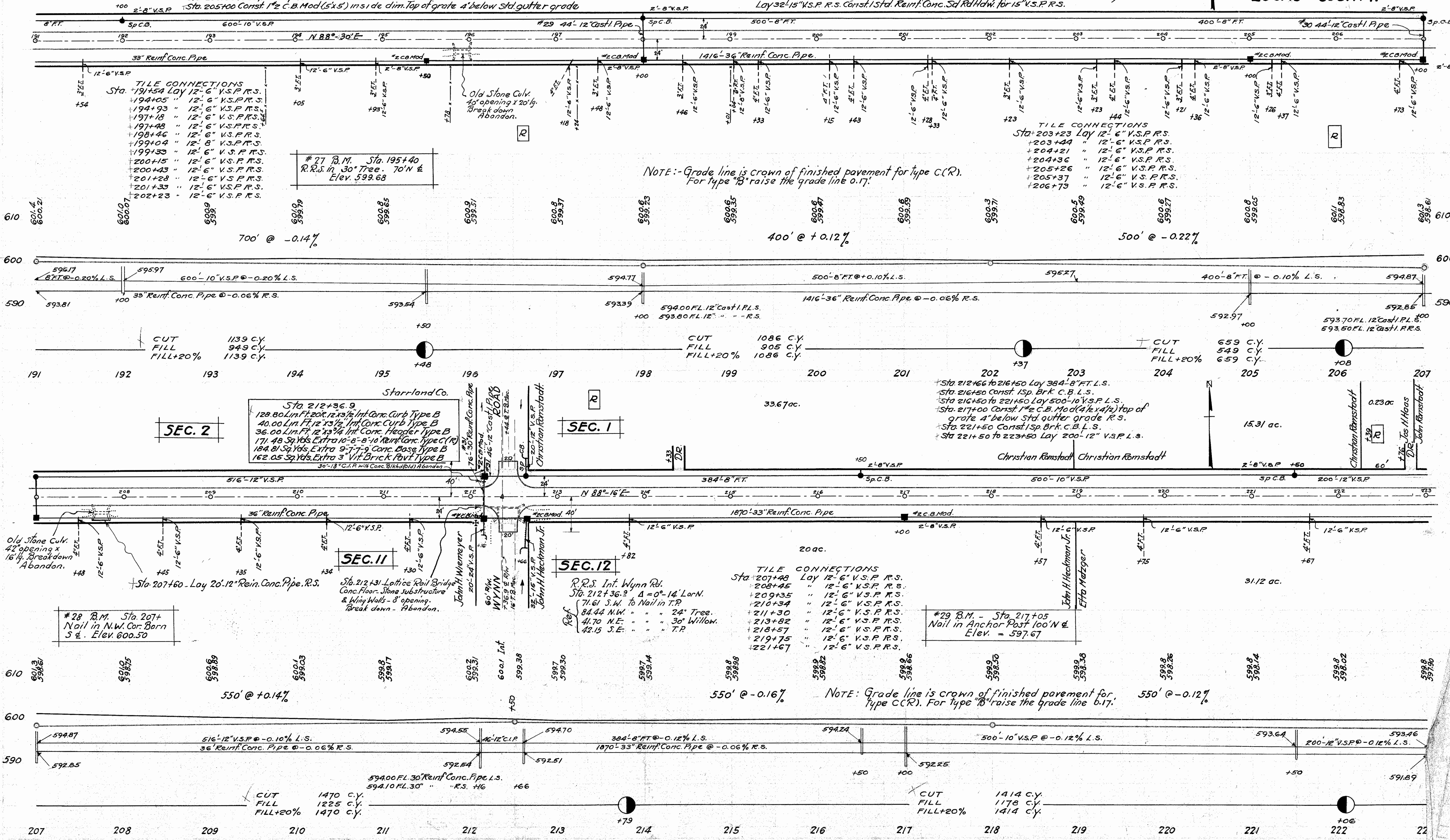
Sta. 175+96	Lay 12"-6" V.S.P. R.S.
176+32	" 12"-6" V.S.P. R.S.
177+53	" 12"-6" V.S.P. R.S.
177+65	" 12"-6" V.S.P. R.S.
178+30	" 12"-6" V.S.P. R.S.
179+42	" 12"-6" V.S.P. R.S.
181+08	" 12"-6" V.S.P. R.S.
182+51	" 12"-6" V.S.P. R.S.

FED.AID DIST.NR.	STATE	FED.AID PROJECT	FISCAL YEAR
10	OHIO	471-C	1928

**JERUSALEM ROAD
S.H. (I.C.H.) #56 SEC. A'
LUCAS COUNTY.**

#29
Sta. 192+00 Const. 1 1/2" C.B. Mod (5'x5') inside dim. Top of grate 4' below std. gutter grade.
Sta. 192+00 to 198+00 Lay 600'-10" V.S.P. L.S.
Sta. 195+50 Const. 1 1/2" C.B. Mod (4 1/2' x 4 1/2') inside dim. Top of grate 4' below std. gutter grade.
Sta. 198+00 Const. 1 1/2" C.B. L.S. Const. 1 1/2" C.B. Mod (5'x5') R.S.
inside dim. top of grate 4' below std. gutter grade. Lay 44'-12" Cast I. Pipe }
Sta. 198+00 to 203+00 Lay 500'-8" V.S.P. L.S.
Sta. 198+00 to 212+16 Lay 1416'-36" Reinf. Conc. pipe R.S.
Sta. 203+00 to 207+00 Lay 400'-8" V.S.P. L.S.
Sta. 205+00 Const. 1 1/2" C.B. Mod (5'x5') inside dim. Top of grate 4' below std. gutter grade

#30
Sta. 207+00 Const. 1 1/2" C.B. L.S. Const. 1 1/2" C.B. Mod (5'x5') inside dim. Top of grate 4' below std. gutter grade R.S. Lay 44'-12" Cast I. Pipe }
Sta. 207+00 to 212+16 Lay 516'-12" V.S.P. L.S.
#31
Sta. 212+16 Const. 2" C.B. Mod (5'x5') inside dim. Top of grate flush with finished ground Lay 76'-30" Reinf. conc. pipe Lay 20'-24" V.S.P. Const. 1 1/2" Reinf. Conc. Sd Rd. Hdwr. for 24" V.S.P.
#31
Sta. 212+16 to 212+66 Lay 46'-12" Cast I. Pipe L.S. }
Sta. 212+16 to 230+00 Lay 1870'-33" Reinf. Conc. pipe R.S.
Sta. 212+66 Const. 1 1/2" C.B. L.S. Lay 20'-12" V.S.P. Const. 1 1/2" Reinf. Conc. Sd Rd. Hdwr. for 12" V.S.P. L.S.
Sta. 212+66 Const. 1 1/2" C.B. Mod (4 1/2' x 4 1/2') inside dim. Top of grate flush with finished ground R.S.
Lay 32'-15" V.S.P. R.S. Const. 1 1/2" Reinf. Conc. Sd Rd Hdwr. for 15" V.S.P. R.S.



TILE CONNECTIONS

Sta. 191+54	Lay 12'-6" V.S.P. R.S.
194+05	" 12'-6" V.S.P. R.S.
194+93	" 12'-6" V.S.P. R.S.
197+18	" 12'-6" V.S.P. R.S.
197+48	" 12'-6" V.S.P. R.S.
198+46	" 12'-6" V.S.P. R.S.
199+04	" 12'-8" V.S.P. R.S.
199+33	" 12'-6" V.S.P. R.S.
200+15	" 12'-6" V.S.P. R.S.
200+43	" 12'-6" V.S.P. R.S.
201+28	" 12'-6" V.S.P. R.S.
201+33	" 12'-6" V.S.P. R.S.
202+23	" 12'-6" V.S.P. R.S.

TILE CONNECTIONS

Sta. 203+23	Lay 12'-6" V.S.P. R.S.
203+44	" 12'-6" V.S.P. R.S.
204+21	" 12'-6" V.S.P. R.S.
204+36	" 12'-6" V.S.P. R.S.
205+26	" 12'-6" V.S.P. R.S.
205+37	" 12'-6" V.S.P. R.S.
206+73	" 12'-6" V.S.P. R.S.

Sta. 212+36.9
129.80 Lin. Ft. 20" x 12" Int. Conc. Curb Type B
40.00 Lin. Ft. 12" x 12" Int. Conc. Curb Type B
36.00 Lin. Ft. 12" x 12" Int. Conc. Header Type B
171.48 Sq. Yds. Extra 10'-8" x 8'-10" Reinf. Conc. Type C(R)
184.81 Sq. Yds. Extra 9'-7" x 9" Conc. Base Type B
162.05 Sq. Yds. Extra 3" Vit. Brick Pav. Type B
30"-18" C.I.P. with Conc. Bldk. (old) Abandon

R.R.S. Int. Wynn Rd.
Sta. 212+36.9 Δ = 0°-14' Lor. N.
71.61 S.W. to Nail in T.P.
84.44 N.W. " " " 24" Tree.
41.70 N.E. " " " 30" Willow.
42.15 S.E. " " " T.P.

#29 B.M. - Sta. 217+05
Nail in Anchor Post 100' N &
Elev. = 597.67

CUT FILL FILL+20%

1470 C.Y.
1225 C.Y.
1470 C.Y.

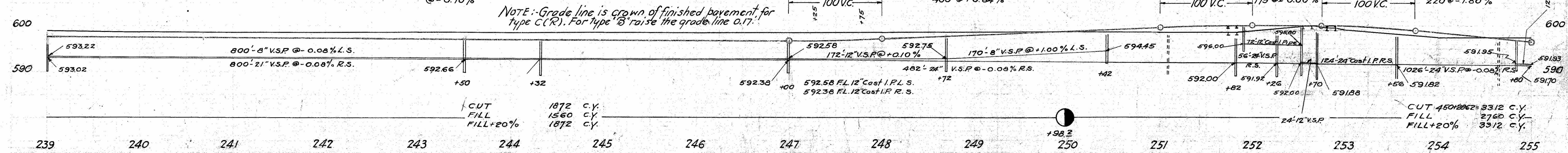
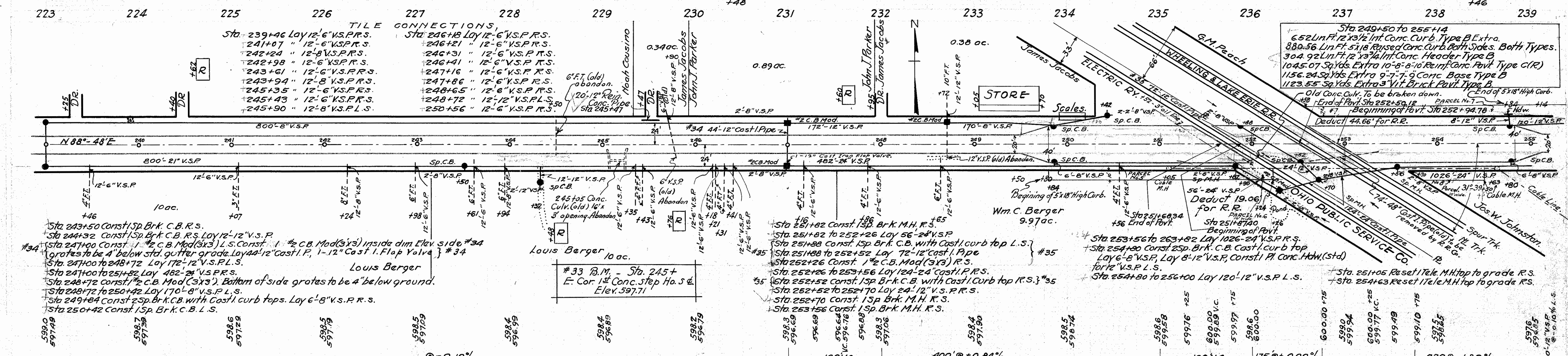
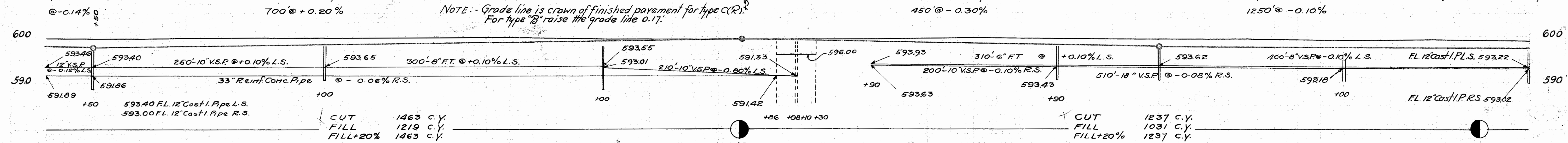
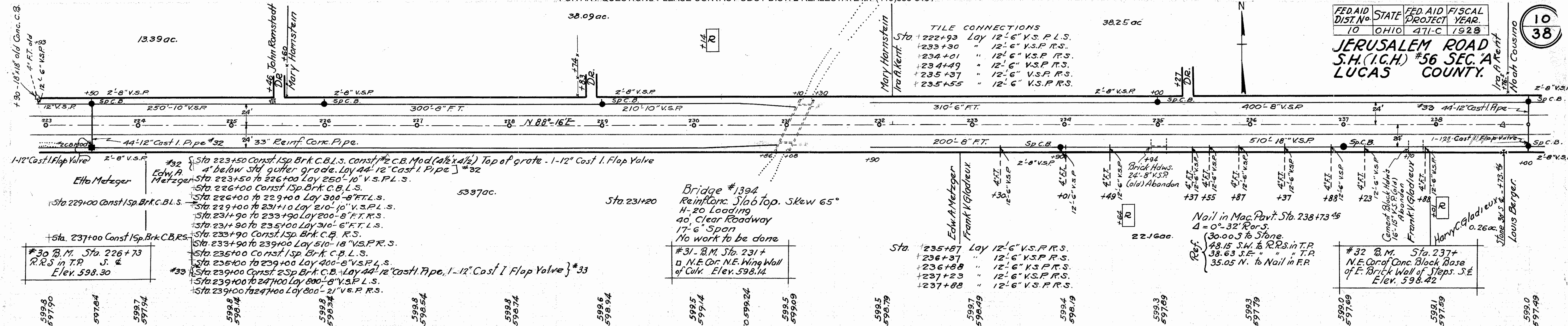
CUT FILL FILL+20%

1414 C.Y.
1178 C.Y.
1414 C.Y.

FED. AID DIST. NO.	STATE	FED. AID PROJECT	FISCAL YEAR
10	OHIO	471-C	1928

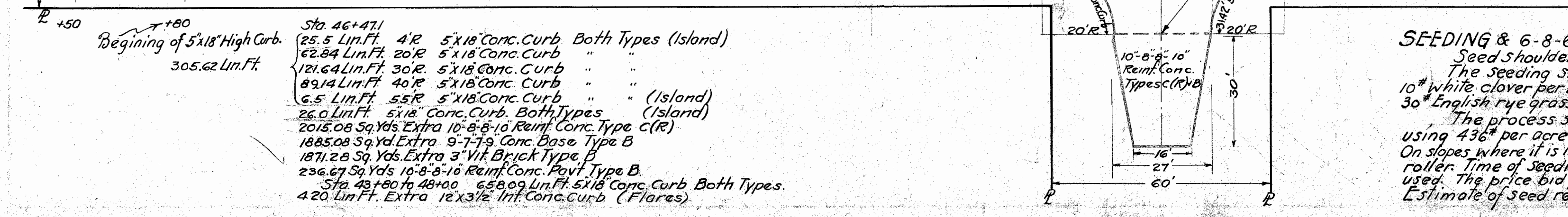
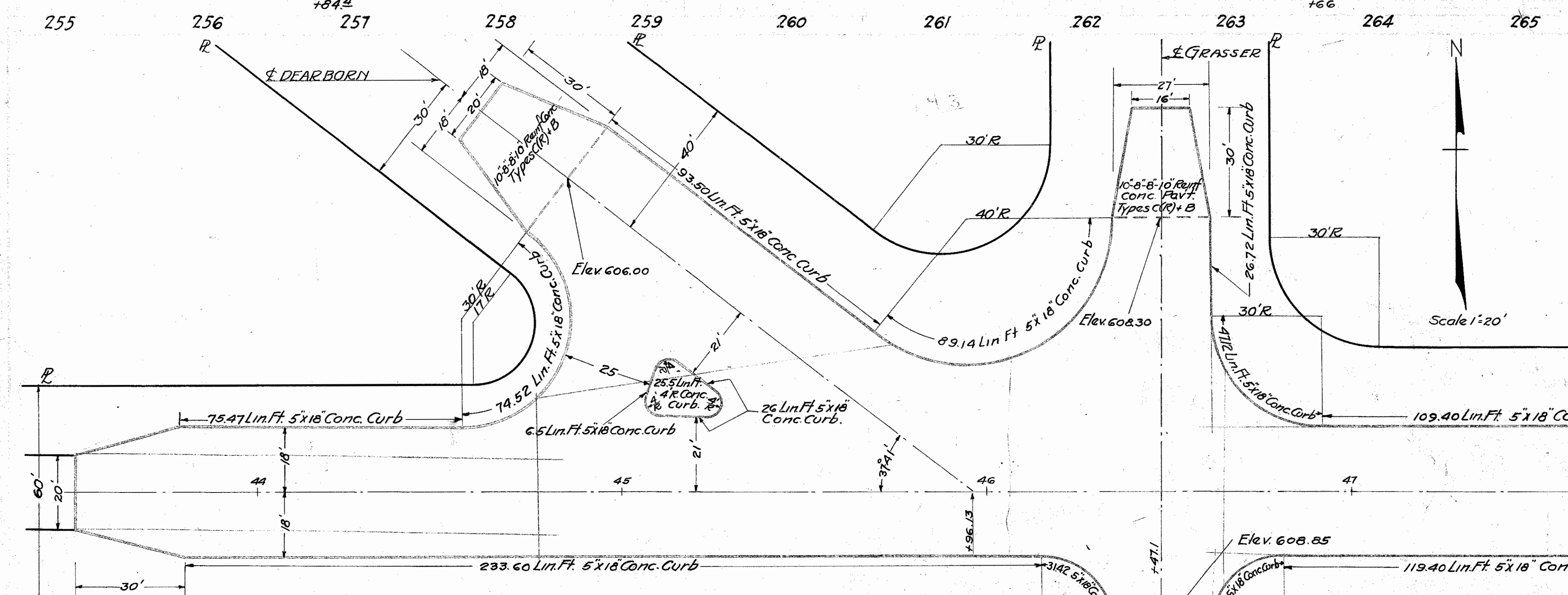
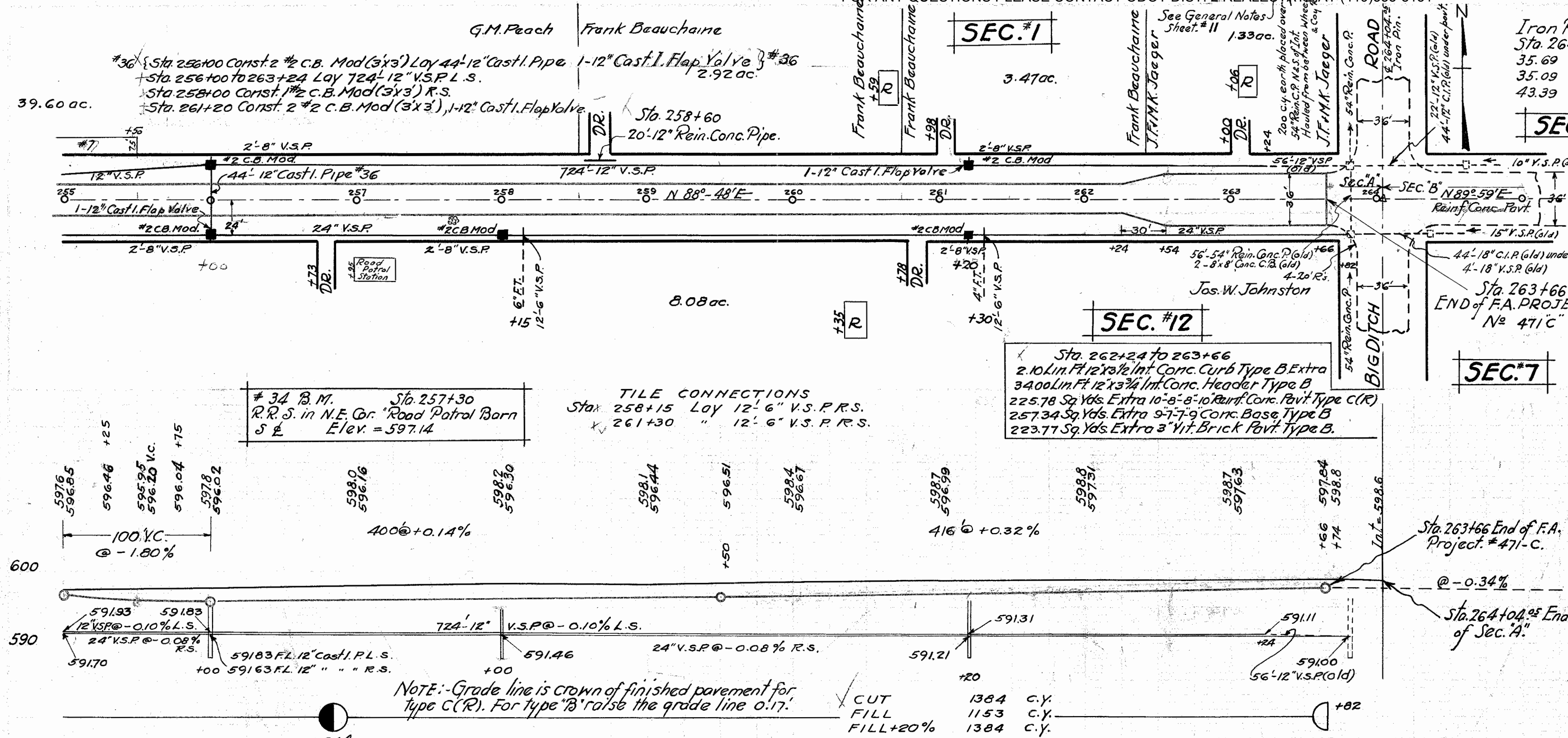
10
38

**JERUSALEM ROAD
S.H. (I.G.H.) #56 SEC. A
LUCAS COUNTY.**



FED. AID DIST. NO.	STATE	FED. AID PROJECT	FISCAL YEAR
10	OHIO	471-C	1928

JERUSALEM ROAD S.H.(I.C.H.) #56 SEC. 'A' LUCAS COUNTY.



GENERAL NOTES

DRAINAGE: Each lot shall have a tap into storm sewer in the form of a 6" T. The contractor shall include this cost in the unit price bid per lineal foot of storm sewer.

All existing drains to be connected to new tile lines, Ys or Ts of proper size to be provided where necessary. Cost of Ys or Ts to be included in price bid per lineal foot of tile. [Ordered to contrary by the Engineer.]

All joints in V.S.P., Rein. Conc. Pipe, & Cast I.P. to be caulked with jute and to be cemented, unless otherwise specified.

Lineal feet of 6", 8", 10" or 12" field tile connections may be cut from the designated length of tap to any length by Engineer in charge and any portion of the balance used on any tile connections not shown on the plans at no extra cost to the State.

All joints of field tile to be wrapped with tar paper as per specifications if so ordered by the Engineer.

No stone backfill is required on field tile.

Each catch basin and manhole to have one or more V.S.P. stubs 8" diam., 2' long unless plans show a different size. All stubs to be placed at same elevation as outlet tile. Cost of stubs to be included in unit price bid per Catch Basin or Manhole.

All dimensions on Mod #2 Catch Basins as shown on plans to be inside. The amount of steel to be increased and spaced as per standard. (See Std. Dwg. # 305)

All old structures of concrete, stone, brick, iron, wood, tile etc. encountered that are to be abandoned removed shall be broken down as per specifications, the cost of doing this work to be included in the excavation item.

Reinforced concrete pipe may be of the Bell & Spigot type or other suitable type, approved by Engineer in charge. Thickness of shell, amount and placing of steel for concrete pipe, in sizes not shown in specifications shall be such as to give strength as required by specifications. The ratio of the amount of steel to concrete shall be such as determined by the Engineer in charge but conforming near that used for pipe the next size under and the next size over in the State Standard.

GRADING: The price bid per lineal foot for finishing berms, shoulders, slopes, ditches etc. on straight away shall include finishing of same back on all approaches.

TRAFFIC MARK: A traffic mark 8" in width shall be constructed on the center of the brick pavement by using glazed cream colored brick in each alternate row. These brick shall be of equal quality and of the same dimensions as the regular brick for this work and the price bid per square yard for brick paving shall include the cost of the traffic mark.

SALVAGE: All materials removed from the Roadway which are not to be used as part of contract shall be piled neatly on Rt. of Way not more than 300' from place of removal, to be the property of the County Commissioners.

CURB: All high curb to be dropped at drives and at such other places as directed at no extra cost to the State.

PRIVATE DRIVES: 200 Tons of #3-4 stone allowed for private drives. The price bid for this stone to include all excavation necessary and the placing of the stone to any grade and thickness, as directed.

MISC.: In calculating the square yards of paving for approaches of the Brick type, all areas have been included that are additional to an 18' center strip; for the concrete type all additional to a 20 foot center strip have been included.

The contractor shall dispose of all surplus excavation as per plans and as indicated in the following: Of the surplus obtained between Wheeling St. & Coy Rd. 200 cu. yds. shall be hauled to Big Ditch Rd. (Sta. 263+84) and placed over 54" Rein. Conc. Pipe, both right and left of center of that intersection; 2862 cu. yds. shall be hauled to "BOOTH" (Sta. 257+30) and placed in fill on each side of W & L.E.R.R. tracks as per cross sections; 5000 cu. yds. (approx.) shall be loaded (each side) into trucks furnished by Millard Ave. contractor. If any part or all of the yardage in the three above disposal operations are reduced by order of the Engineer the contractor shall then provide and make disposal of the excess material as per specifications. All the above said work to be done at the unit price bid per cubic yard for excavation and no extra allowance is to be made for the above operations.

For details and notes relating to C.B.'s & M.H.'s see Sheet #12

SEEDING & 6-8-6 FERTILIZER

Seed shoulders and slopes parallel to pavement Sta. 0+26 to Sta. 263+66 both sides.

The seeding shall be done after the slopes are complete as per plans, using a mixture of 45% alsike, 45% blue grass, 10% white clover per 100 lbs., if done in Spring. When seeded in the Fall use a mixture of 45% blue grass, 10% white clover, 30% English rye grass and 15% red top per 100 lbs.

The process shall be as follows:- A light drag shall be run over the shoulders, then spread the 6-8-6 fertilizer using 436# per acre; now sow the above seed mixture using an approved spreader; immediately roll with a light hand roller. On slopes where it is impossible to work a drag an iron rake may be substituted and a hand roller used in lieu of the heavier land roller. Time of Seeding:- Spring, Mar. 15th to May 1st; Fall, Sept. 1st to Oct. 1st. Best grade of seed and in the amount of 35# per acre used. The price bid per acre shall include all the above work.

Estimate of seed required :- 26 276' x 12' x 2 = 630624 sq. ft. 14.48 x 436 = 6313 lbs. fertilizer (Mn.) 73360 = 14.48 Acres: 14.48 x 35# = 507 lbs. Seed. (Mn.)