

FED. AID DIST. NO.	STATE	FED. AID PROJECT	FISCAL YEAR
10	OHIO	471B	1929

SH.(I.C.H.) 56 SEC'S. B, C & D LUCAS COUNTY

STATE OF OHIO
 DEPARTMENT OF HIGHWAYS
JERUSALEM ROAD
 S.H. (I.C.H.) NO. 56 SEC'S B C & D PET. NO. 4894
LUCAS COUNTY
 OREGON AND JERUSALEM TWP'S. AUG. 1928.

The Standard Specifications of the State of Ohio, Department of Highways, in force on date of contract will govern this improvement.

I hereby approve these plans and declare that the making of this improvement will require the closing to traffic of the highway and that detours will be provided as shown on the plan and estimates.

Approved: *C. L. Lewis*
 Date, *Aug 29 1928* Resident District Deputy Director

2-28-29 *John P. Falkner*
J. H. Mahan
 Date, *7-24-28* Resident Division Deputy Director

Approved: *H. H. Weiss*
 Date, *8-25-28* Chief Engineer
 Bureau of Construction

Approved: _____
 Date, _____ Chief Engineer
 Bureau of Maintenance

Approved: _____
 Date, _____ Chief Engineer
 Bureau of Bridges

Approved: *Paul S. Bigney*
 Date, *10-2-28* Chief Engineer

Approved: *Harry J. Kirk* *3/5/29*
 Date, *10/24/28* Director of Highways

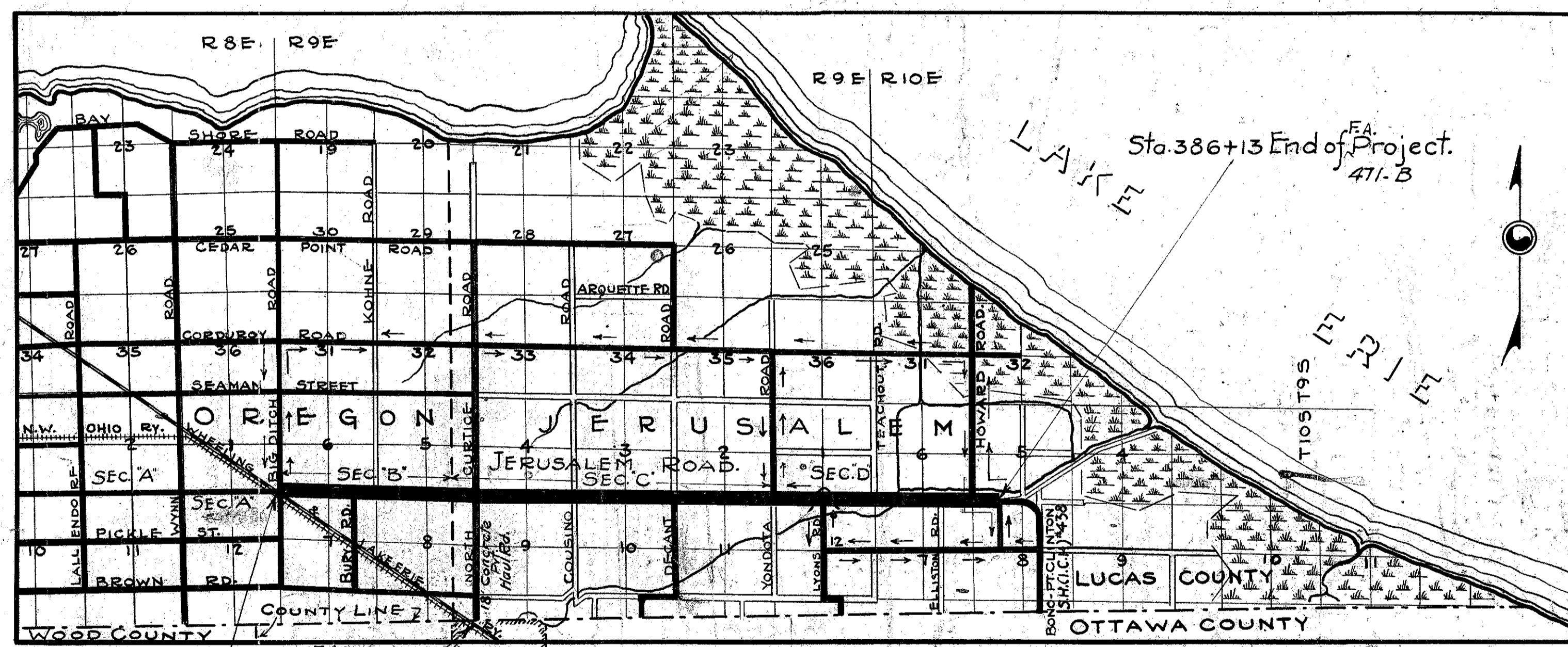
Approved: _____
 Date, _____ District Engineer
 Bureau of Public Roads

Approved: _____
 Date, _____ Chief Engineer
 Bureau of Public Roads

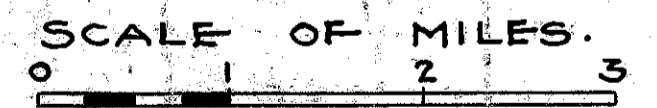
Approved: _____
 Date, _____ Chief of Bureau

CONVENTIONAL SIGNS

- State Line.
- County Line.
- Township Line.
- Section Line.
- Property Line. (Not fenced)
- Center Line.
- City or Village Line.
- Fence.
- Telephone or Telegraph.
- Steam Railroad.
- Electric Line.
- Guard Rail.
- Drain Pipe - New.
- Drain Pipe - Old.



LOCATION PLAN



We, the Commissioners of Lucas County hereby approve these plans and certify that the right of way 60 min. ft. wide is available for the construction, maintenance and repair of the above highway.

R. E. Farnsworth
Paul P. Hoffman
Ray E. Davis

Date, Sept 17 1928 County Commissioners.

SCALES

- PLAN 50' = 1"
- PROFILE (VERT.) 5' = 1"
- PROFILE (HOR.) 50' = 1"
- CROSS SECTIONS 5' = 1"

PORTION TO BE IMPROVED



INDEX OF SHEETS PROJECT TRACINGS.

- TITLE PAGE. #1
- TYPICAL CROSS SECTION #2
- PLANS & PROFILE. #3 to #15 incl.
- CROSS SECTIONS. #16 to #36
- STRUCTURAL PLANS. #37 to #39
- SUMMARY SHEETS. #40 to #42

SUPPLEMENTAL PRINTS OF STRUCTURAL STANDARDS.

Dwg. No. 98 or 100-130 Mod. - 300-305 Mod.
 105 A-B-C-D

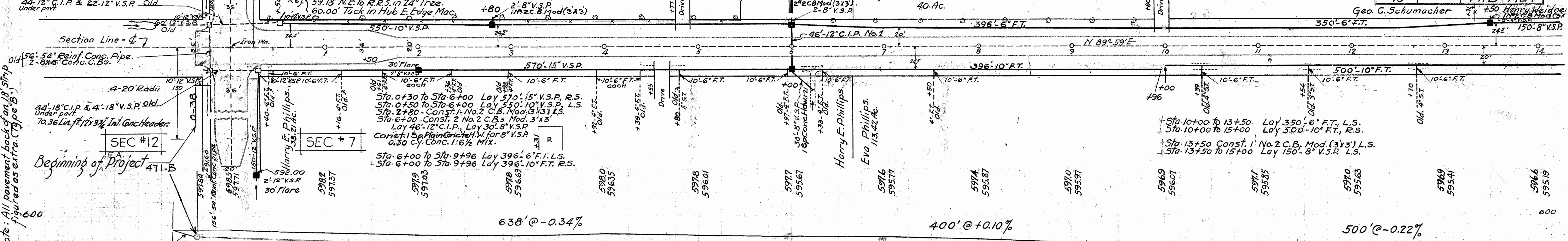
CONSTRUCTION BUREAU
 JUN 30 1955
 GROUND PHOTOLAB

FED. AID DIST. NO.	STATE	FED. AID PROJECT	FISCAL YEAR
10	OHIO	471B	1929

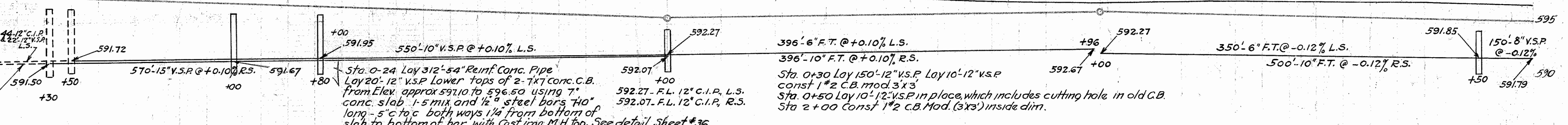
All 12x3 1/2" Integral Conc. Header, Type B Est. only
 All 12x3 1/2" Integral Conc. Curb Type B Est. only
 987.10 Lin. ft. 12x3 1/2" Int. Conc. Curb. cir.
 Extra Sq. Yd. Pavement 1641.71 Type C(R)
 1572.65 Type B

NOTE: All drainage structures marked old which are a part of the road drainage system were built by the County Bridge Dept. in 1928 and are in a serviceable condition. All old drainage structures shown thus.

Note: Where lengths of new pipe are shown on plans to be tapped into existing C.B.'s the cost of cutting holes for taps to be included in price bid per lined foot of tile.

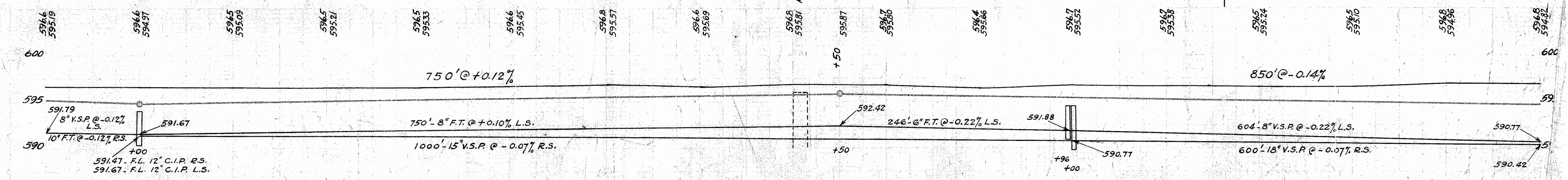
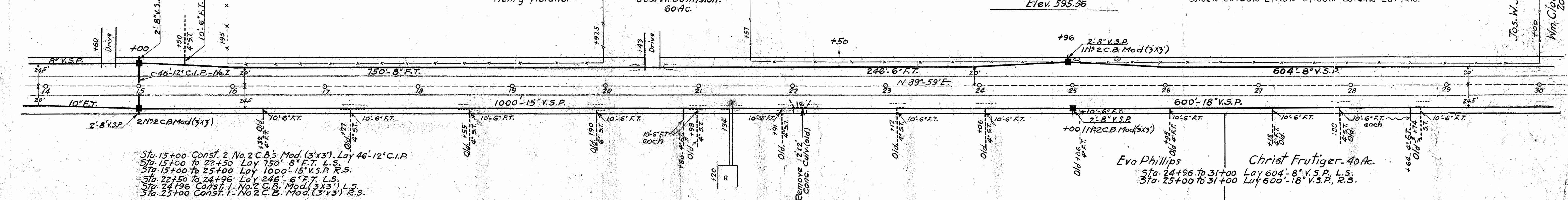


NOTE: - 25' to be built as shown 20' wide. Stone from 300 Tons allowed for approaches to be rolled in 2-4" W.B. courses 25.55 Tons stone. Surface treated with 30 gal. C.T. per sq. yd. (See General Notes Sheet #42)
 (old) 44'-18" C.I.P. & 4'-18" V.S.P. R.S. 590.80 F.L. Ditch 400' North.



CUT = 1315 C.Y.	CUT = 366 C.Y.	CUT = 853 C.Y.
FILL = 1096 C.Y.	FILL = 305 C.Y.	FILL = 711 C.Y.
FILL + 20% = 1315 C.Y.	FILL + 20% = 366 C.Y.	FILL + 20% = 853 C.Y.

Note: The price bid per lined foot for finishing berms, shoulders, ditches etc. on straight away shall include finishing of same back on all approaches.



CUT = 1173 C.Y.	CUT = 1204 C.Y.
FILL = 977 C.Y.	FILL = 1004 C.Y.
FILL + 20% = 1173 C.Y.	FILL + 20% = 1204 C.Y.

MORGAN A MORGAN 2-24 3-28

MORGAN DAGGETT 2-24

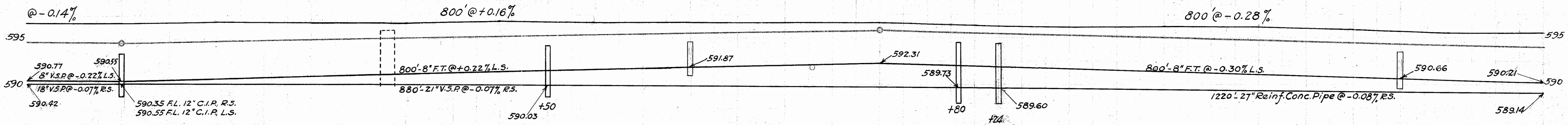
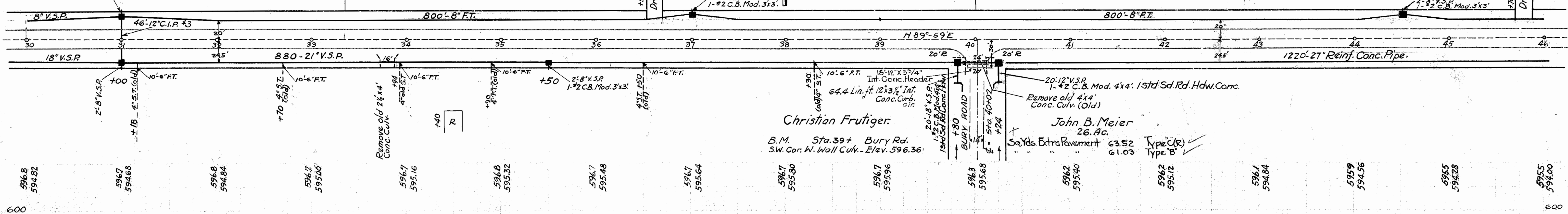
FOR ANY QUESTIONS PLEASE CONTACT ODOT DIST. 2 REALSTATE AT (419)353-8131
 Christian Frutiger John Meier
 20 Ac.

S.H. (I.C.H.) 56 SEC. BC+D 4
 LUCAS COUNTY 42

FED. AID DIST. NO.	STATE	FED. AID PROJECT	FISCAL YEAR
10	OHIO	471B	1929

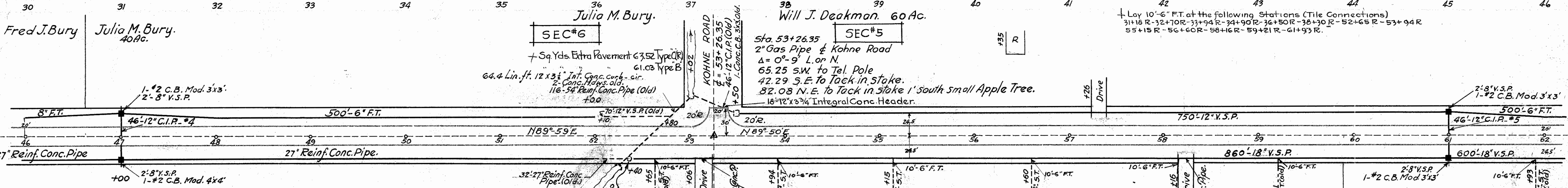
Sta. 31+00 - Const. 2 No. 2 C.B. Mod. (3'x3') Lay 46'-12" C.I.P.
 Sta. 31+00 To 39+00 - Lay 800'-8" F.T. L.S.
 Sta. 31+00 To 39+80 - Lay 880'-21" V.S.P. R.S.
 Sta. 35+50 - Const. 1 - No. 2 C.B. Mod. (3'x3') R.S.
 Sta. 37+00 - Const. 1 - No. 2 C.B. Mod. (3'x3') L.S.

Sta. 39+80 To 47+00 - Lay 800'-8" F.T. L.S.
 Sta. 39+80 Const. 1 - No. 2 C.B. Mod. (4'x4') R.S. Lay 20'-18" V.S.P. South
 Const. 1 - Std. Side Rd. Hdwy for 18" V.S.P. 155' c.y. of 1.5" Mix Conc. 35# Steel.
 Sta. 39+80 To 52+00 - Lay 1220'-27" Reinf. Conc. Pipe, R.S.
 Sta. 40+24 Const. 1 - No. 2 C.B. Mod. (4'x4') R.S. Lay 20'-12" V.S.P. South
 Sta. 44+50 - Const. 1 - Std. Side Rd. Hdwy for 12" V.S.P. - 1.3 c.y. of 1.5" Mix Conc. 30# Steel.
 Const. 1 - No. 2 C.B. Mod. (3'x3') L.S.
 John Meier F.J. Bury
 40 Ac.



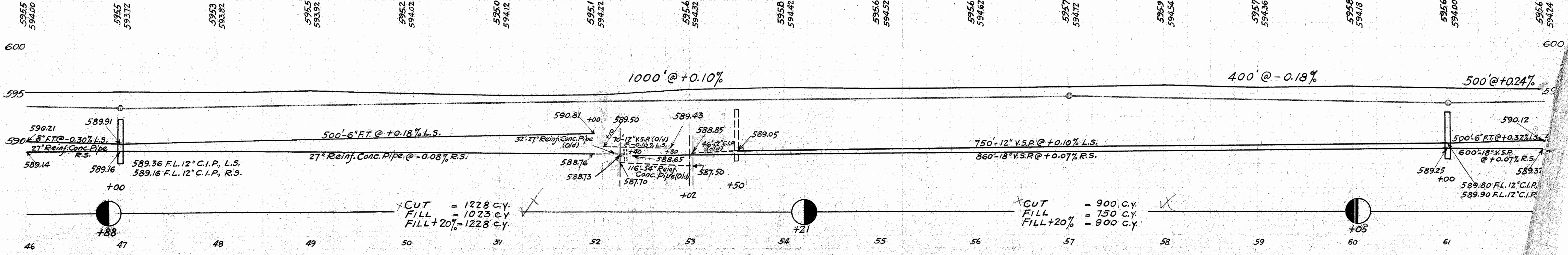
CUT = 1562 C.Y.
 FILL = 1302 C.Y.
 FILL + 20% = 1562 C.Y.

CUT = 1079 C.Y.
 FILL = 899 C.Y.
 FILL + 20% = 1079 C.Y.



Sta. 47+00 Const. 1 - No. 2 C.B. Mod. (3'x3') L.S.
 Sta. 47+00 Const. 1 - No. 2 C.B. Mod. (4'x4') R.S. Lay 46'-12" C.I.P.
 Sta. 47+00 To 52+00 - Lay 500'-6" F.T. L.S.
 Sta. 52+40 To 61+00 - Lay 860'-18" V.S.P. R.S.
 Sta. 53+50 To 61+00 - Lay 750'-12" V.S.P. L.S.
 Sta. 53+07 - Lay 20'-12" Reinf. Conc. Pipe, R.S.
 Sta. 58+16 - Lay 20'-12" Reinf. Conc. Pipe, R.S.

Sta. 61+00 - Const. 2 No. 2 C.Bs. Mod. (3'x3') Lay 46'-12" C.I.P.
 Sta. 61+00 To 66+00 - Lay 500'-6" F.T. L.S.
 Sta. 61+00 To 67+00 - Lay 600'-18" V.S.P. R.S.

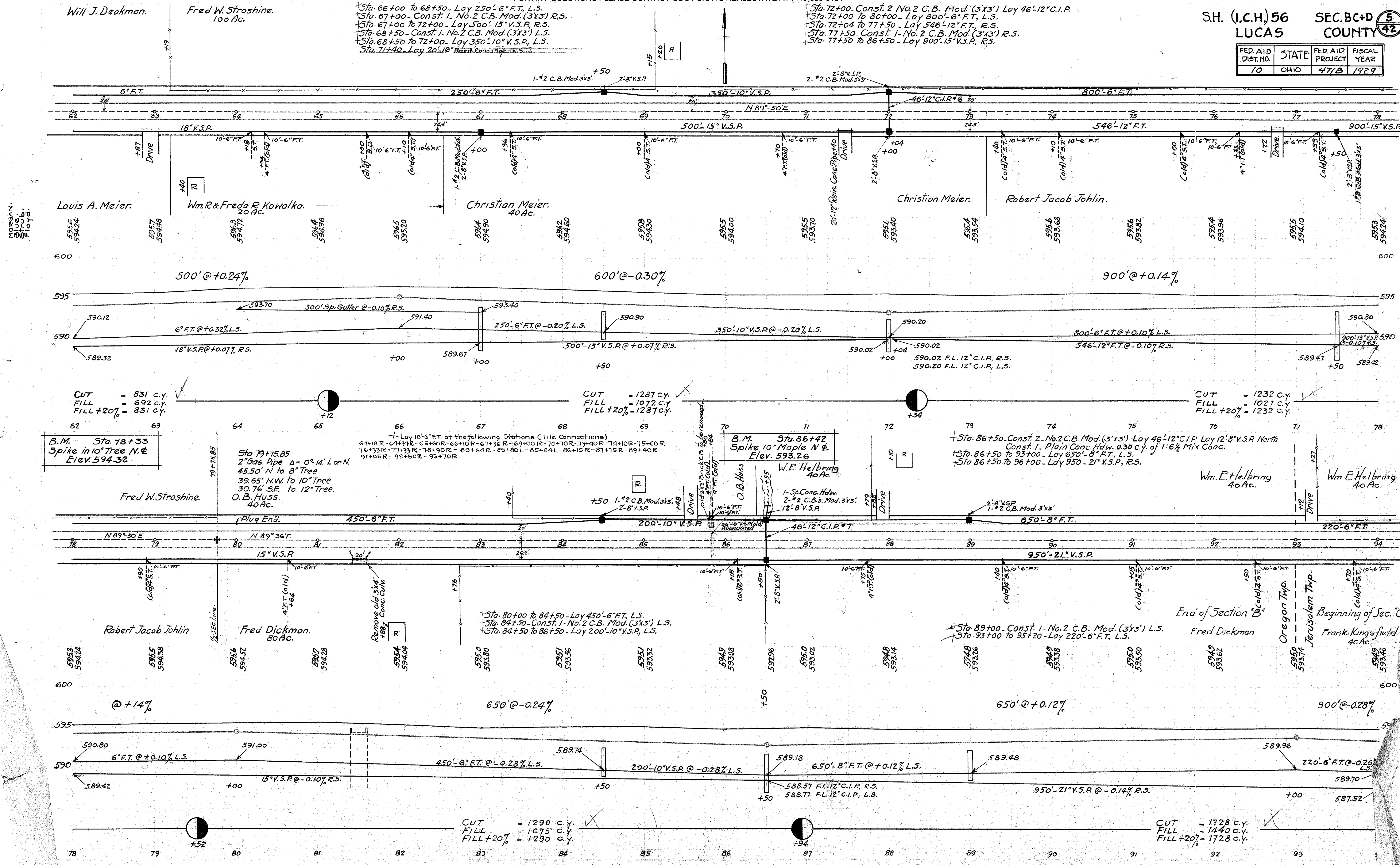


CUT = 1228 C.Y.
 FILL = 1023 C.Y.
 FILL + 20% = 1228 C.Y.

CUT = 900 C.Y.
 FILL = 750 C.Y.
 FILL + 20% = 900 C.Y.

FED. AID DIST. NO.	STATE	FED. AID PROJECT	FISCAL YEAR
10	OHIO	471B	1929

Sta. 66+00 to 68+50 - Lay 250'-6" F.T., L.S.
 Sta. 67+00 - Const. 1. No. 2 C.B. Mod. (3'x3') R.S.
 Sta. 67+00 to 72+00 - Lay 500'-15" V.S.P., R.S.
 Sta. 68+50 - Const. 1. No. 2 C.B. Mod. (3'x3') L.S.
 Sta. 68+50 to 72+00 - Lay 350'-10" V.S.P., L.S.
 Sta. 71+40 - Lay 20'-10" Rein. Conc. Pipe, R.S.
 Sta. 72+00 - Const. 2. No. 2 C.B. Mod. (3'x3') Lay 46'-12" C.I.P.
 Sta. 72+00 to 80+00 - Lay 800'-6" F.T., L.S.
 Sta. 72+04 to 77+50 - Lay 546'-12" F.T., R.S.
 Sta. 77+50 - Const. 1. No. 2 C.B. Mod. (3'x3') R.S.
 Sta. 77+50 to 86+50 - Lay 900'-15" V.S.P., R.S.



CUT = 831 c.y.
 FILL = 692 c.y.
 FILL +20% = 831 c.y.

CUT = 1287 c.y.
 FILL = 1072 c.y.
 FILL +20% = 1287 c.y.

CUT = 1232 c.y.
 FILL = 1027 c.y.
 FILL +20% = 1232 c.y.

B.M. Sta. 78+33
 Spike in 10" Tree N. & E.
 Elev. 594.32

Sta. 79+75.85
 2" Gas Pipe Δ = 0° 14' Lon N.
 45.50' N to 8" Tree
 39.65' N.W. to 10" Tree
 30.76' S.E. to 12" Tree.
 O.B. Huss.
 40 Ac.

Lay 10'-6" F.T. at the following Stations (Tile Connections)
 64+18 R - 64+34 R - 65+60 R - 66+10 R - 67+36 R - 69+00 R - 70+10 R - 73+40 R - 74+00 R - 75+60 R
 76+33 R - 77+33 R - 78+90 R - 80+64 R - 85+80 L - 85+84 L - 86+15 R - 87+15 R - 89+40 R
 91+05 R - 92+50 R - 93+70 R

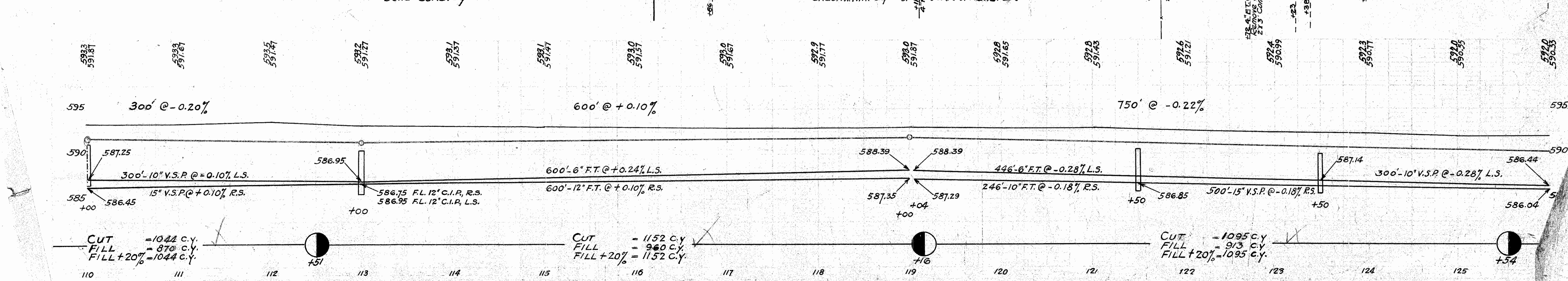
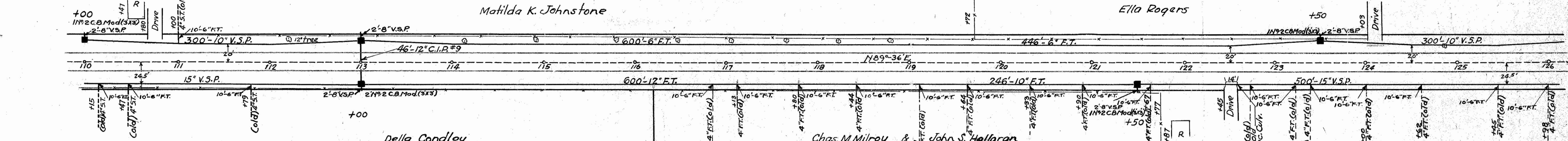
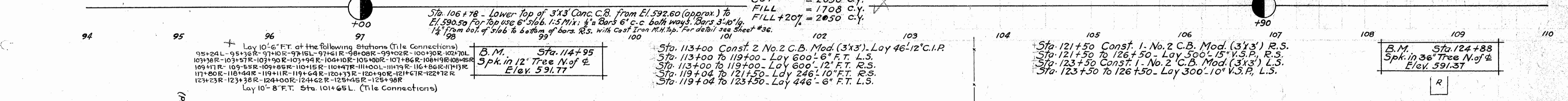
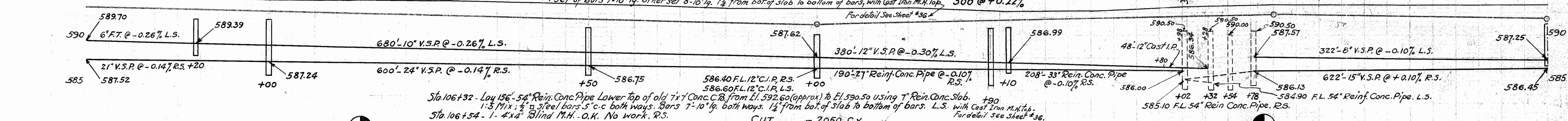
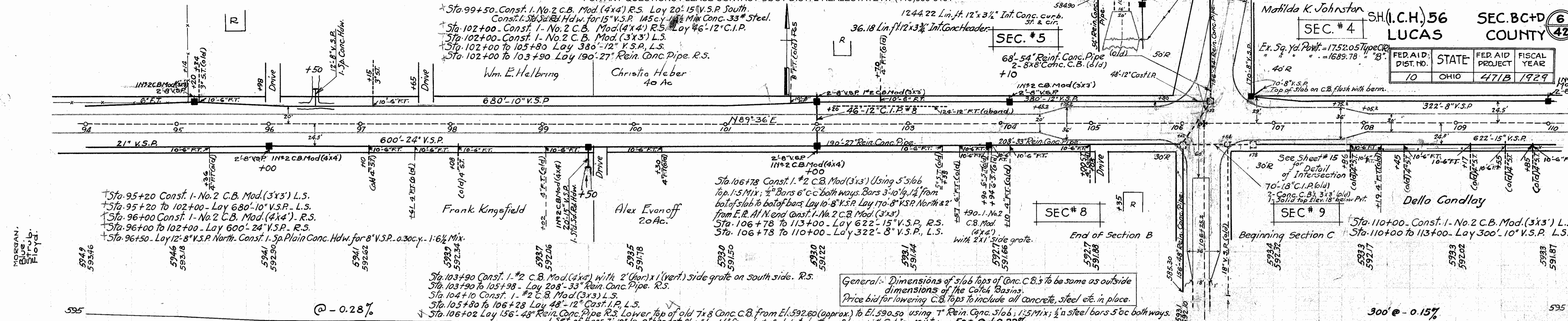
B.M. Sta. 86+42
 Spike 10" Maple N & E
 Elev. 593.26

Sta. 86+50 - Const. 2. No. 2 C.B. Mod. (3'x3') Lay 46'-12" C.I.P. Lay 12'-8" V.S.P. North
 Const. 1. Plain Conc. Hdw. 0.30 c.y. of 1:6 1/2 Mix Conc.
 Sta. 86+50 to 93+00 - Lay 650'-8" F.T., L.S.
 Sta. 86+50 to 96+00 - Lay 950'-21" V.S.P., R.S.

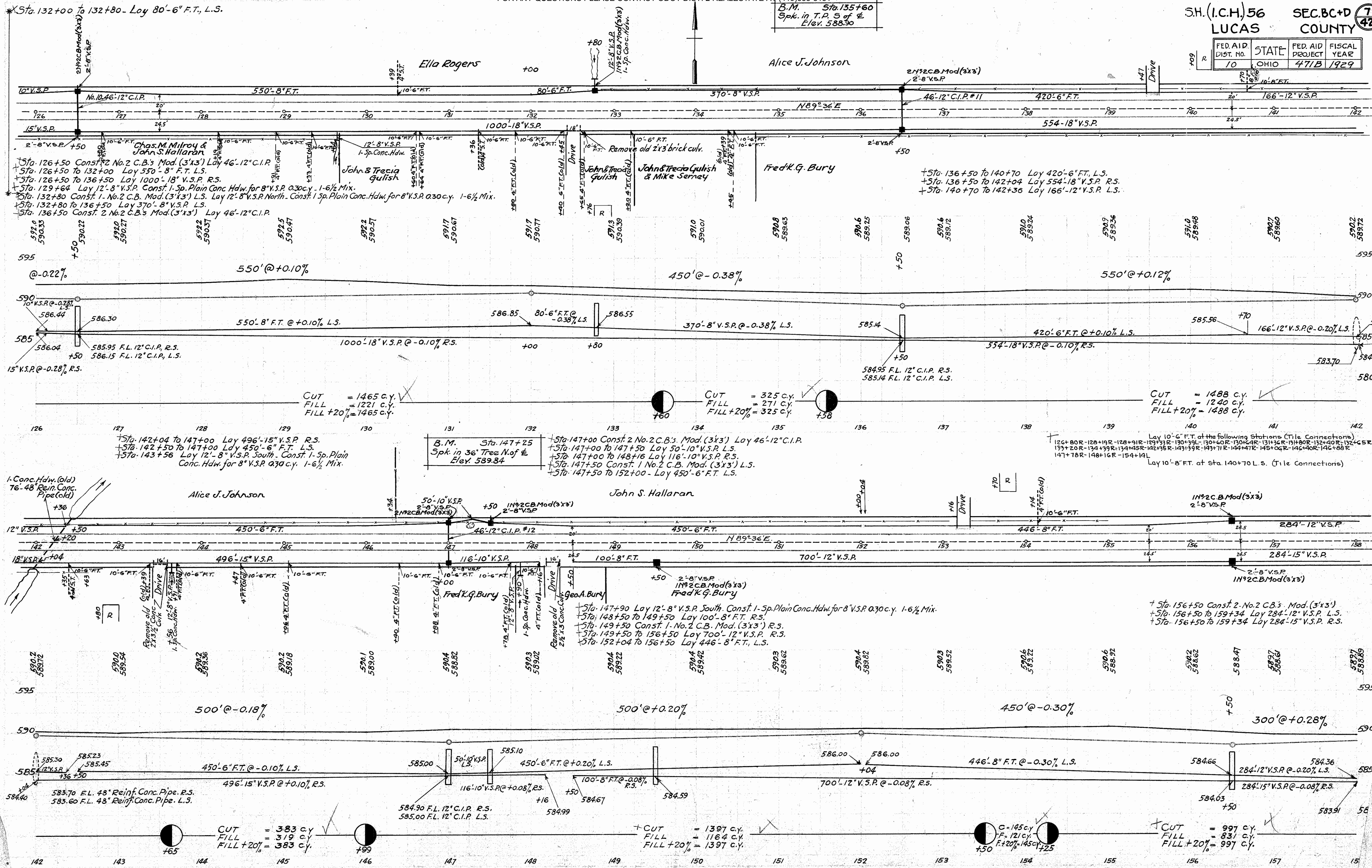
CUT = 1290 c.y.
 FILL = 1075 c.y.
 FILL +20% = 1290 c.y.

CUT = 1728 c.y.
 FILL = 1440 c.y.
 FILL +20% = 1728 c.y.

FED. AID DIST. NO.	STATE	FED. AID PROJECT	FISCAL YEAR
10	OHIO	471B	1929

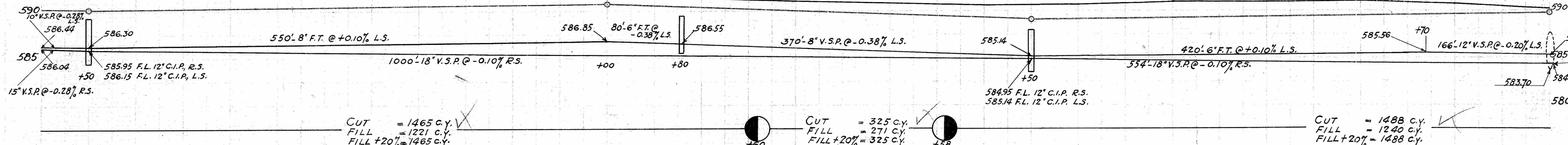
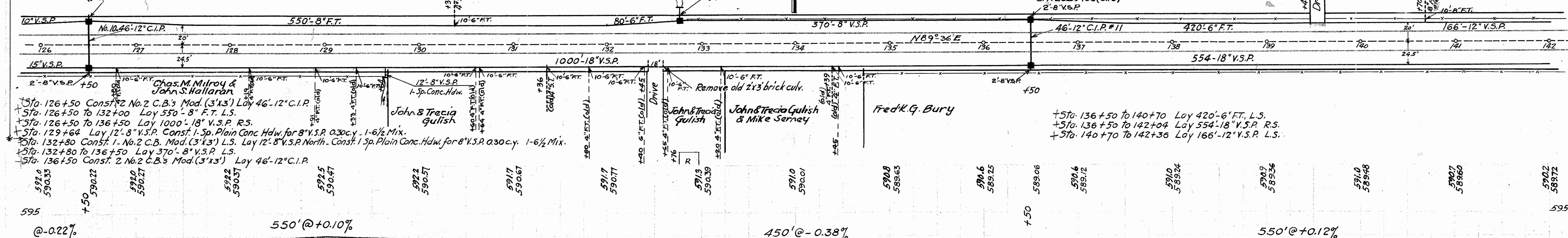


FED. AID DIST. NO.	STATE	FED. AID PROJECT	FISCAL YEAR
10	OHIO	471B	1929



Sta. 132+00 to 132+80 - Lay 80'-6" F.T., L.S.

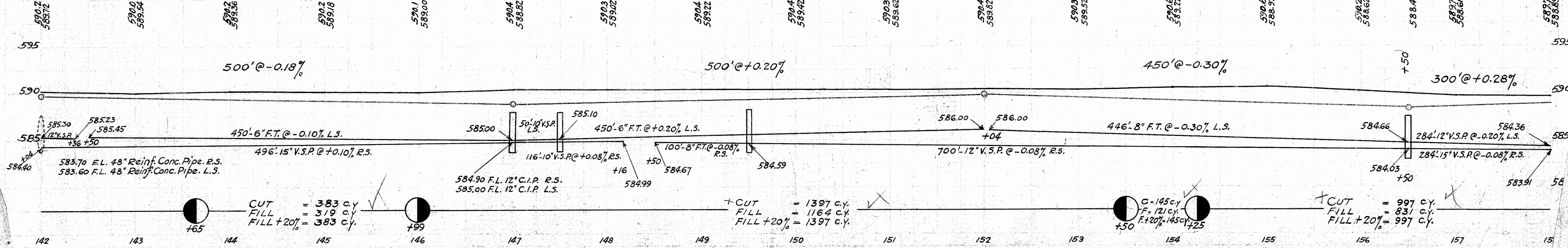
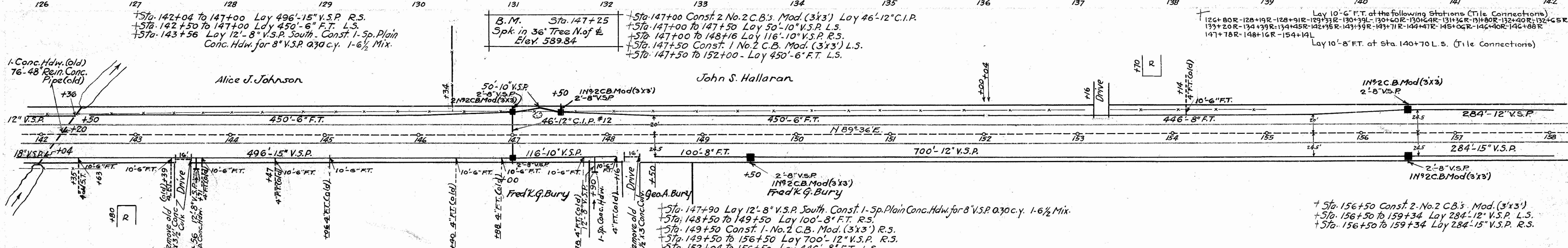
B.M. Sta. 135+60
Spk. in T.P. S of E
Elev. 588.90



CUT = 1465 c.y.
FILL = 1221 c.y.
FILL + 20% = 1465 c.y.

CUT = 325 c.y.
FILL = 271 c.y.
FILL + 20% = 325 c.y.

CUT = 1488 c.y.
FILL = 1240 c.y.
FILL + 20% = 1488 c.y.



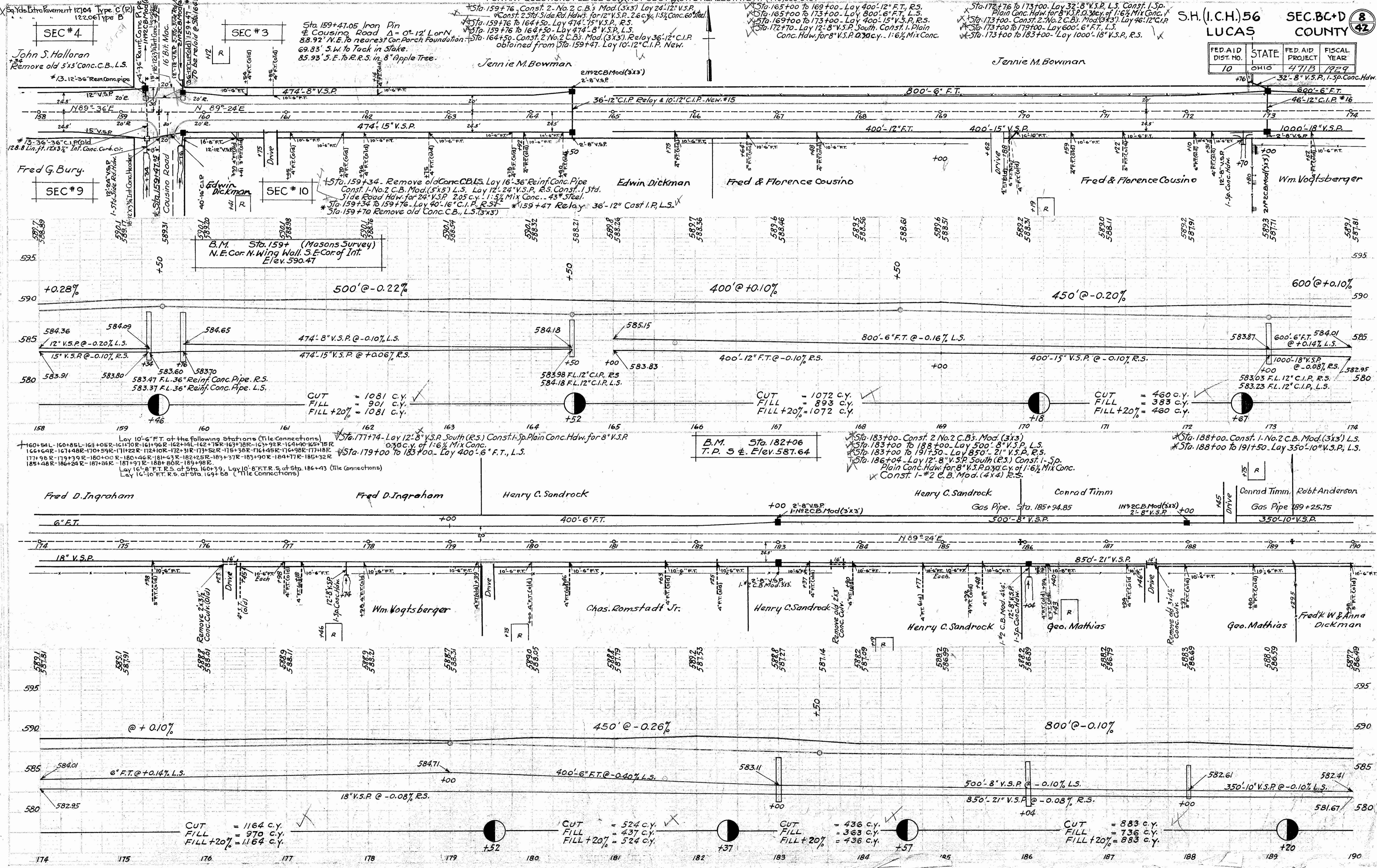
CUT = 383 c.y.
FILL = 319 c.y.
FILL + 20% = 383 c.y.

CUT = 1397 c.y.
FILL = 1164 c.y.
FILL + 20% = 1397 c.y.

C = 145 c.y.
F = 121 c.y.
F + 20% = 145 c.y.

CUT = 997 c.y.
FILL = 831 c.y.
FILL + 20% = 997 c.y.

FED. AID DIST. NO.	STATE	FED. AID PROJECT	FISCAL YEAR
10	OHIO	471B	1989



Sta. 159+47.05 Iron Pin
 & Causino Road Δ = 0°-12' Lon N
 83.92' N.E. to nearest Cor. Parch Foundation
 69.83' S.W. to Tack in Stake.
 85.93' S.E. to R.R.S. in 8" Apple Tree.

Sta. 165+00 to 169+00 - Lay 400'-12" V.S.P., R.S.
 Sta. 165+00 to 173+00 - Lay 800'-6" F.T., L.S.
 Sta. 169+00 to 173+00 - Lay 400'-15" V.S.P., R.S.
 Sta. 172+70 - Lay 12'-8" V.S.P. South. Const. 1-1-1/2 Plain Conc. Hd. for 8" V.S.P. 2.05 c.y. 1-1/2 Mix Conc.

Jennie M. Bowman

John S. Halloran
 Remove old 5'x3' Conc. C.B. L.S.

Fred G. Bury

Edwin Dickman

Fred & Florence Cousino

Fred & Florence Cousino

Wm. Vogtsberger

B.M. Sta. 159+ (Masons Survey)
 N.E. Cor. N. Wing Wall, S.E. Cor. of Int.
 Elev. 590.47

B.M. Sta. 182+06
 T.P. 3 E. Elev. 587.64

Lay 10'-6" FT. of the following Stations (Tile Connections)
 160+54L-160+85L-161+05R-161+10R-161+14L-162+75R-163+18R-163+32R-164+40L-165+15R
 166+48R-167+48R-170+59R-171+22R-172+10R-172+31R-173+52R-175+38R-164+45R-176+98R-177+18R
 177+98R-179+39R-180+00R-180+46R-181+03R-182+25R-183+37R-183+90R-184+77R-185+32R
 185+48R-186+24R-187+24R-187+97R-188+80R-189+98R
 Lay 16'-8" FT. R.S. at Sta. 160+39, Lay 10'-8" FT. S. at Sta. 186+43 (Tile Connections)
 Lay 14'-10" FT. R.S. of Sta. 169+68 (Tile Connections)

Fred D. Ingraham

Fred D. Ingraham

Henry C. Sandrock

Henry C. Sandrock

Conrad Timm

Conrad Timm, Robt Anderson

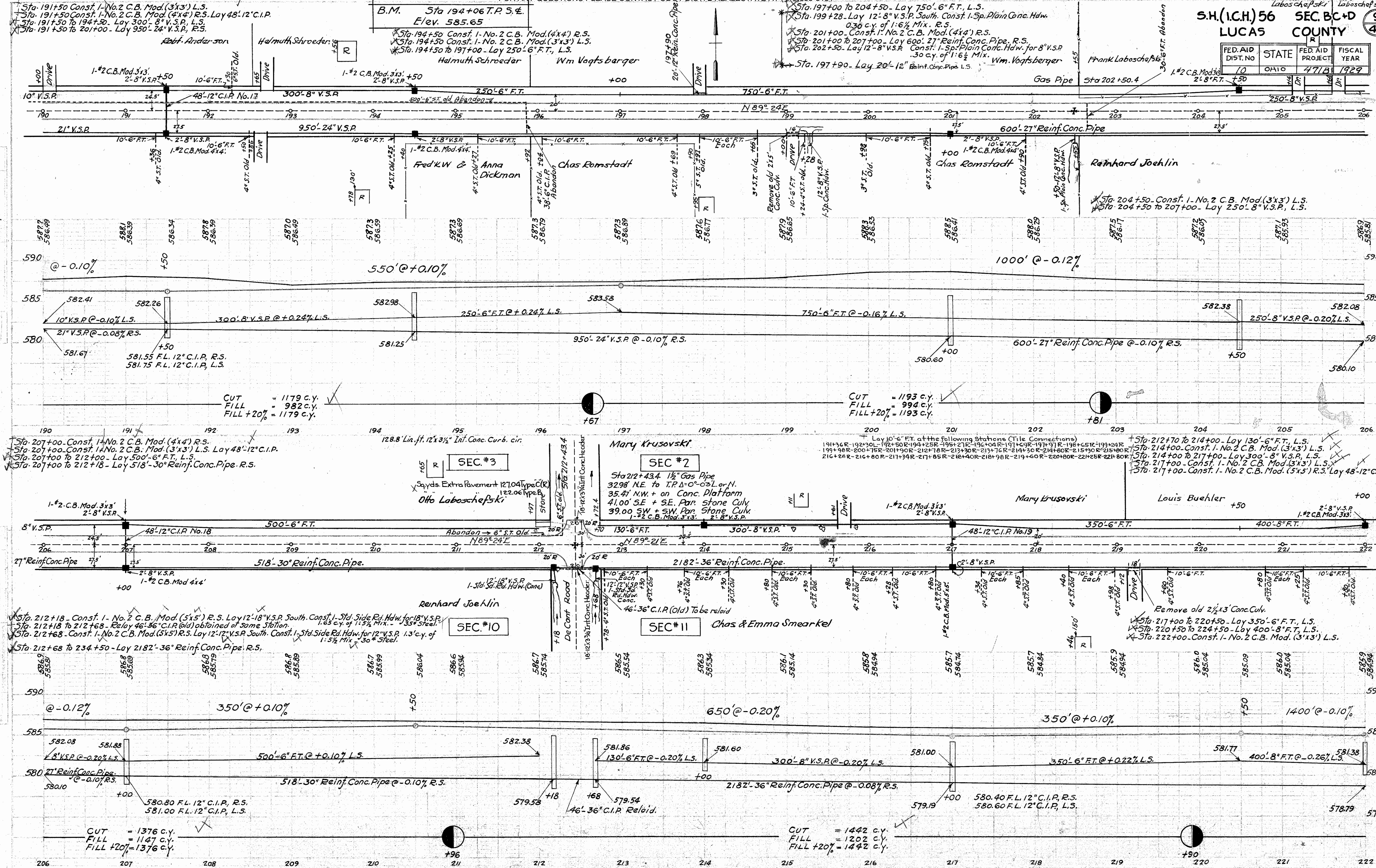
CUT = 1164 c.y.
 FILL = 970 c.y.
 FILL + 20% = 1164 c.y.

CUT = 524 c.y.
 FILL = 437 c.y.
 FILL + 20% = 524 c.y.

CUT = 436 c.y.
 FILL = 363 c.y.
 FILL + 20% = 436 c.y.

CUT = 883 c.y.
 FILL = 736 c.y.
 FILL + 20% = 883 c.y.

FED. AID DIST. NO	STATE	FED. AID PROJECT	FISCAL YEAR
10	OHIO	471A	1929



CUT = 1179 c.y.
 FILL = 982 c.y.
 FILL + 20% = 1179 c.y.

CUT = 1193 c.y.
 FILL = 994 c.y.
 FILL + 20% = 1193 c.y.

CUT = 1376 c.y.
 FILL = 1147 c.y.
 FILL + 20% = 1376 c.y.

CUT = 1442 c.y.
 FILL = 1202 c.y.
 FILL + 20% = 1442 c.y.

MORGAN, H.
 STUBBINS,
 FLOYD.

Frank Laboschefski
 Off. Laboschefski

B.M. Sta 194+06 T.P. 5.4
 Elev. 585.65

Sta. 197+00 to 204+50 - Lay 750'-6" F.T., L.S.
 Sta. 199+28 - Lay 12'-8" V.S.P. South. Const. 1-Sp. Plain Conc. Hdwr.
 0.30 c.y. of 1:6 1/2 Mix. R.S.
 Sta. 201+00 - Const. 1-No. 2 C.B. Mod. (4x4) R.S.
 Sta. 201+00 to 207+00 - Lay 600'-27" Reinf. Conc. Pipe, R.S.
 Sta. 202+50 - Lay 12'-8" V.S.P. Const. 1-Sp. Plain Conc. Hdwr. for 8" V.S.P.
 .30 c.y. of 1:6 1/2 Mix. Wm. Vogtsberger

Sta. 191+50 Const. 1-No. 2 C.B. Mod. (3x3) L.S.
 Sta. 191+50 Const. 1-No. 2 C.B. Mod. (4x4) R.S. Lay 48'-12" C.I.P.
 Sta. 191+50 to 194+50 - Lay 300'-8" V.S.P., L.S.
 Sta. 191+50 to 201+00 - Lay 950'-24" V.S.P., R.S.

Sta. 204+50 - Const. 1-No. 2 C.B. Mod. (3x3) L.S.
 Sta. 204+50 to 207+00 - Lay 250'-8" V.S.P., L.S.

Sta. 207+00 - Const. 1-No. 2 C.B. Mod. (4x4) R.S.
 Sta. 207+00 - Const. 1-No. 2 C.B. Mod. (3x3) L.S. Lay 48'-12" C.I.P.
 Sta. 207+00 to 212+00 - Lay 500'-6" F.T., L.S.
 Sta. 207+00 to 212+18 - Lay 518'-30" Reinf. Conc. Pipe, R.S.

Sta. 212+18 - Const. 1-No. 2 C.B. Mod. (5x5) R.S. Lay 12'-18" V.S.P. South. Const. 1-Std. Side Rd. Hdwr. for 18" V.S.P.
 Sta. 212+18 to 212+68 - Relay 46'-36" C.I.P. (Old) obtained at same station.
 Sta. 212+68 - Const. 1-No. 2 C.B. Mod. (5x5) R.S. Lay 12'-12" V.S.P. South. Const. 1-Std. Side Rd. Hdwr. for 12" V.S.P. 1.3' c.y. of 1:5 1/2 Mix. 30" # Steel.
 Sta. 212+68 to 234+50 - Lay 2182'-36" Reinf. Conc. Pipe, R.S.

Lay 10'-6" F.T. at the following stations (Tile Connections)
 191+76R-192+30L-192+50R-194+25R-195+27R-196+04R-197+49R-197+97R-198+65R-199+24R
 199+98R-200+75R-201+90R-212+78R-213+30R-213+76R-214+30R-214+80R-215+30R-215+80R
 216+28R-216+80R-217+34R-217+85R-218+40R-218+98R-219+40R-220+80R-221+25R-221+80R

Sta. 212+70 to 214+00 - Lay 130'-6" F.T., L.S.
 Sta. 214+00 - Const. 1-No. 2 C.B. Mod. (3x3) L.S.
 Sta. 214+00 to 217+00 - Lay 300'-8" V.S.P., L.S.
 Sta. 217+00 - Const. 1-No. 2 C.B. Mod. (3x3) L.S.
 Sta. 217+00 - Const. 1-No. 2 C.B. Mod. (5x5) R.S. Lay 48'-12" C.I.P.

SEC. #3

SEC. #2

SEC. #10

SEC. #11

Mary Krusovski

Renhard Joehlin

Chas & Emma Smearkel

Mary Krusovski

Louis Buehler

Ohlo Laboschefski

Halmuth Schroeder

Wm Vogtsberger

Fred & Anna Dickman

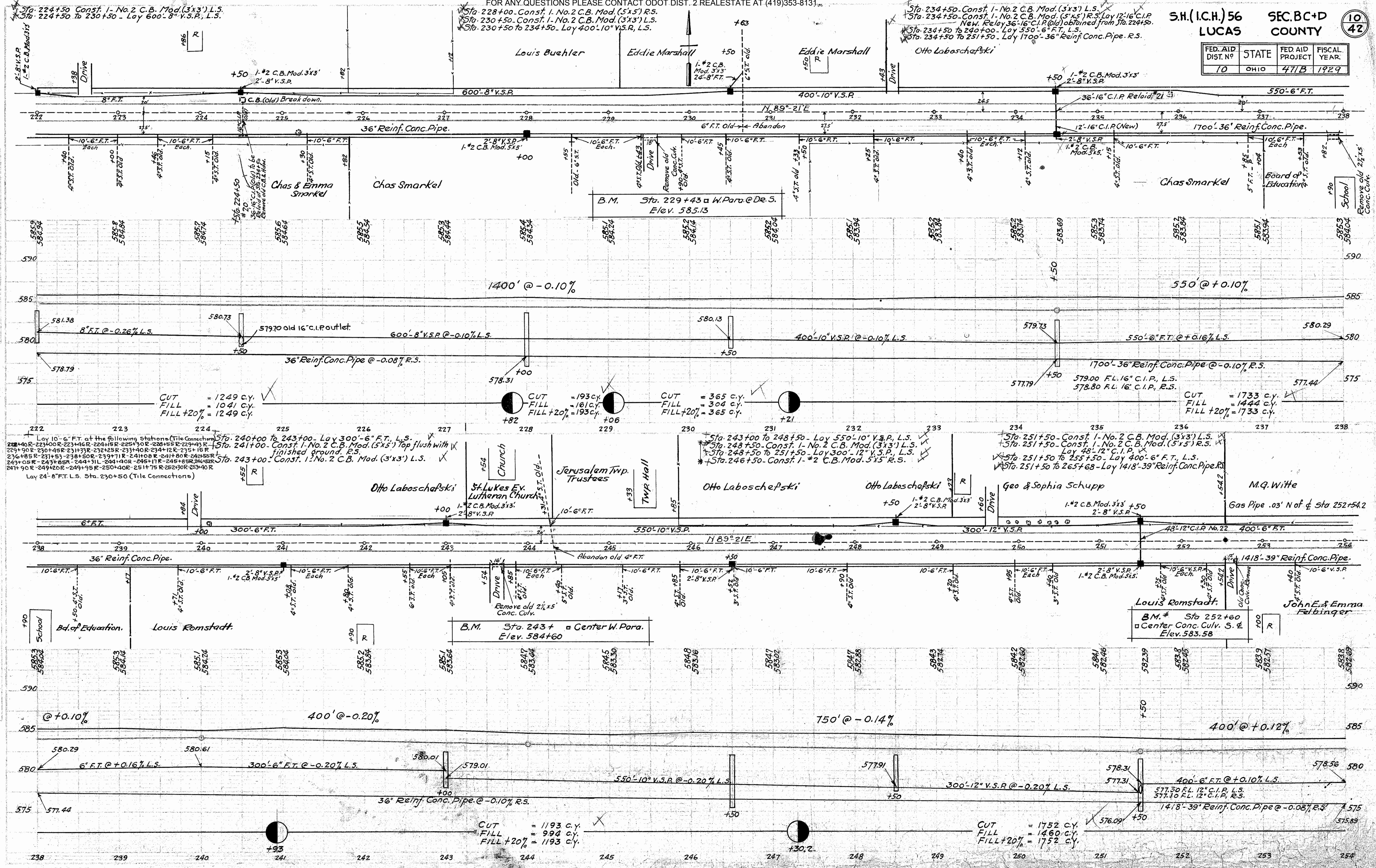
Chas Romstadt

Chas Romstadt

Renhard Joehlin

FOR ANY QUESTIONS PLEASE CONTACT ODOT DIST. 2 REALSTATE AT (419)353-8131.

FED. AID DIST. NO.	STATE	FED. AID PROJECT	FISCAL YEAR
10	OHIO	471B	1929



Sta. 224+50 Const. 1-No. 2 C.B. Mod. (3'x3') L.S.
 Sta. 224+50 to 230+50 - Lay 600'-8" V.S.P., L.S.

Sta. 228+00 Const. 1-No. 2 C.B. Mod. (5'x5') R.S.
 Sta. 230+50 Const. 1-No. 2 C.B. Mod. (3'x3') L.S.
 Sta. 230+50 to 234+50 - Lay 400'-10" V.S.P., L.S.

Sta. 234+50 Const. 1-No. 2 C.B. Mod. (3'x3') L.S.
 Sta. 234+50 Const. 1-No. 2 C.B. Mod. (5'x5') R.S. Lay 12'-16" C.I.P. New. Lay 36'-16" C.I.P. (Old) obtained from Sta. 224+50.
 Sta. 234+50 to 240+00 - Lay 550'-6" V.S.P., L.S.
 Sta. 234+50 to 251+50 - Lay 1700'-36" Reinf. Conc. Pipe. R.S.

Lay 10'-6" F.T. at the following Stations (Tile Connections)
 Sta. 222+00 R-223+46 R-224+15 R-225+30 R-226+55 R-227+43 R-228+15 R-229+15 R-230+15 R-231+15 R-232+15 R-233+15 R-234+15 R-235+15 R-236+15 R-237+15 R-238+15 R-239+15 R-240+15 R-241+15 R-242+15 R-243+15 R-244+15 R-245+15 R-246+15 R-247+15 R-248+15 R-249+15 R-250+15 R-251+15 R-252+15 R-253+15 R-254+15
 Lay 24'-8" F.T. L.S. Sta. 230+50 (Tile Connections)

Sta. 240+00 to 243+00 - Lay 300'-6" F.T., L.S.
 Sta. 241+00 Const. 1-No. 2 C.B. Mod. (5'x5') Top flush with finished ground. R.S.
 Sta. 243+00 Const. 1-No. 2 C.B. Mod. (3'x3') L.S.

Sta. 243+00 to 248+50 - Lay 550'-10" V.S.P., L.S.
 Sta. 248+50 Const. 1-No. 2 C.B. Mod. (3'x3') L.S.
 Sta. 248+50 to 251+50 - Lay 300'-12" V.S.P., L.S.
 Sta. 246+50 Const. 1-No. 2 C.B. Mod. 5'x5' R.S.

Sta. 251+50 Const. 1-No. 2 C.B. Mod. (3'x3') L.S.
 Sta. 251+50 Const. 1-No. 2 C.B. Mod. (5'x5') R.S.
 Lay 48'-12" C.I.P. V.
 Sta. 251+50 to 255+50 - Lay 400'-6" F.T., L.S.
 Sta. 251+50 to 265+68 - Lay 1418'-39" Reinf. Conc. Pipe R.S.

CUT = 1193 c.y.
 FILL = 994 c.y.
 FILL + 20% = 1193 c.y.

CUT = 1752 c.y.
 FILL = 1460 c.y.
 FILL + 20% = 1752 c.y.

Sta. 265+91.6 Stone. New & to run from this Stone East 2650.6 ft. to a point (Sta. 292+42.2) 18.5 ft. South of Iron Pin. Quarter Corner.

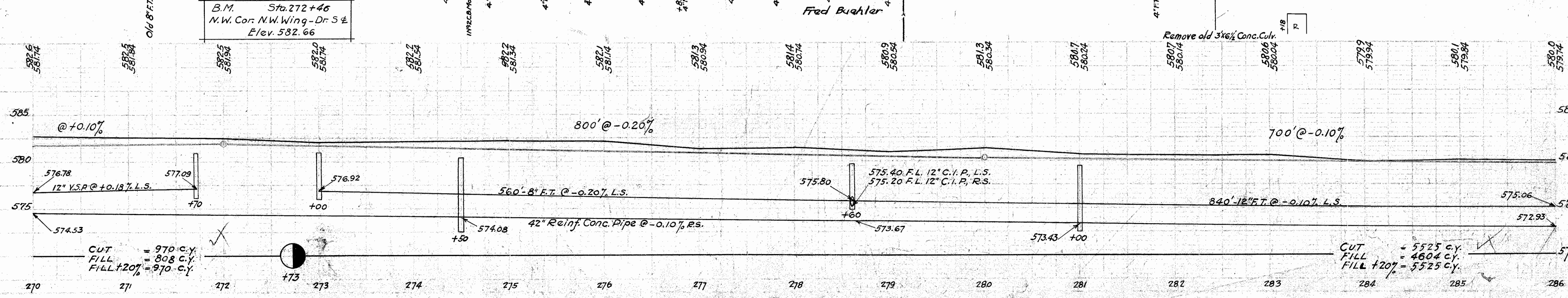
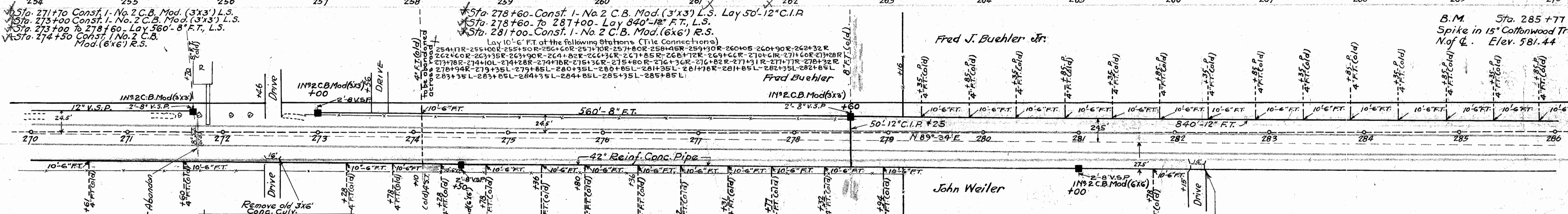
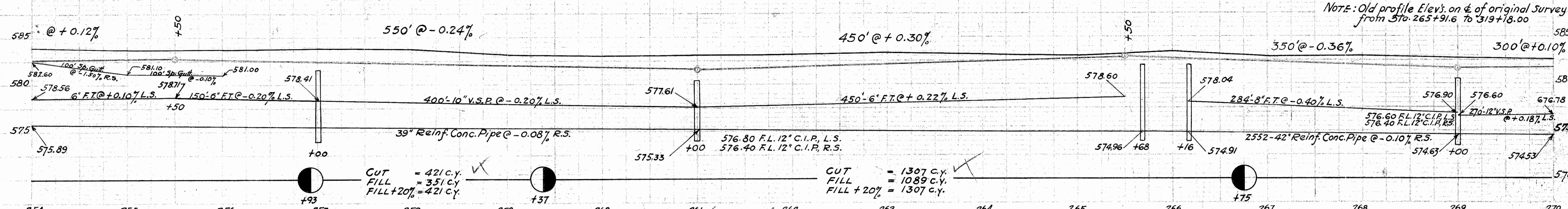
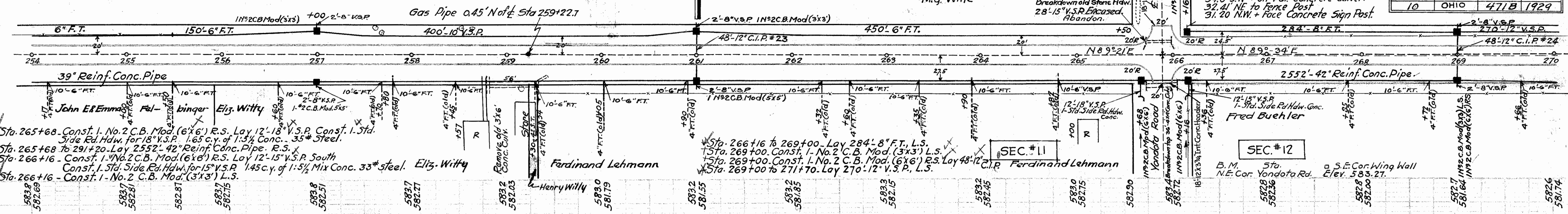
End Section C

Beginning Section D

S.H. (I.C.H.) 56
LUCAS COUNTY SEC. B, C + D

FED. AID DIST. N°	STATE	FED. AID PROJECT	FISCAL YEAR
10	OHIO	471B	1929

- Sta. 255+50 to 257+00 - Lay 150'-6" F.T., L.S.
- Sta. 257+00 - Const. 1 No. 2 C.B. Mod. (3'x3') L.S.
- Sta. 257+00 - Const. 1 No. 2 C.B. Mod. (5'x5') R.S.
- Sta. 257+00 to 261+00 - Lay 400'-10" V.S.P., L.S.
- Sta. 261+00 - Const. 1 - No. 2 C.B. Mod. (3'x3') L.S.
- Sta. 261+00 - Const. 1 - No. 2 C.B. Mod. (5'x5') R.S., Lay 48'-12" C.I.P.
- Sta. 261+00 to 265+50 - Lay 450'-6" F.T., L.S.



NOTE: Old profile Elev. on & of original survey from Sta. 265+91.6 to 319+18.00

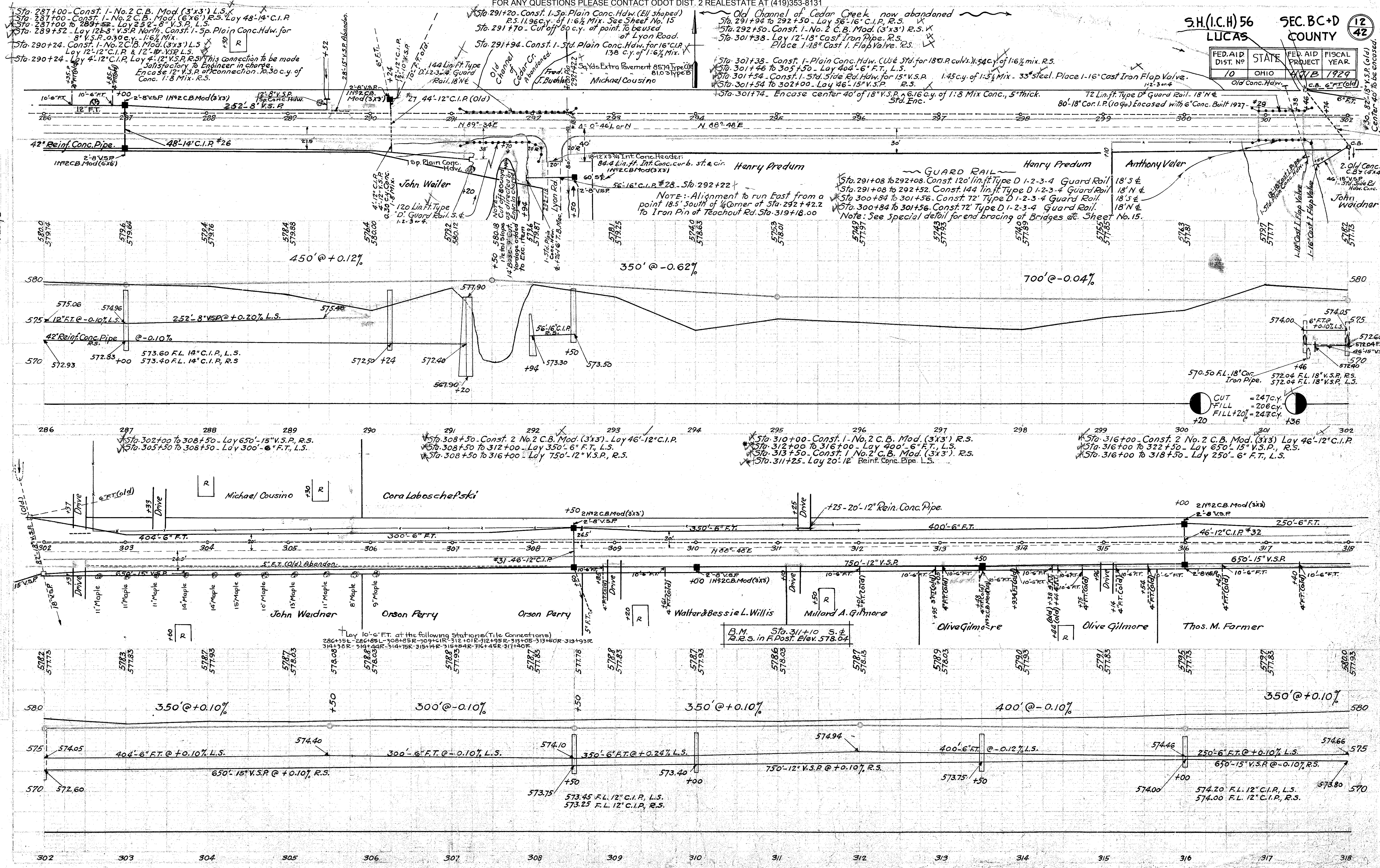
CUT = 970 c.y.
FILL = 808 c.y.
FILL + 20% = 970 c.y.

CUT = 5525 c.y.
FILL = 4604 c.y.
FILL + 20% = 5525 c.y.

FOR ANY QUESTIONS PLEASE CONTACT ODOT DIST. 2 REALSTATE AT (419)353-8131

S.H.(I.C.H) 56
LUCAS SEC. BC+D
COUNTY 12
42

FED. AID DIST. NO.	STATE	FED. AID PROJECT	FISCAL YEAR
10	OHIO	117B	1929



Contractor to slope old earth Rd. for 10' to meet concrete.

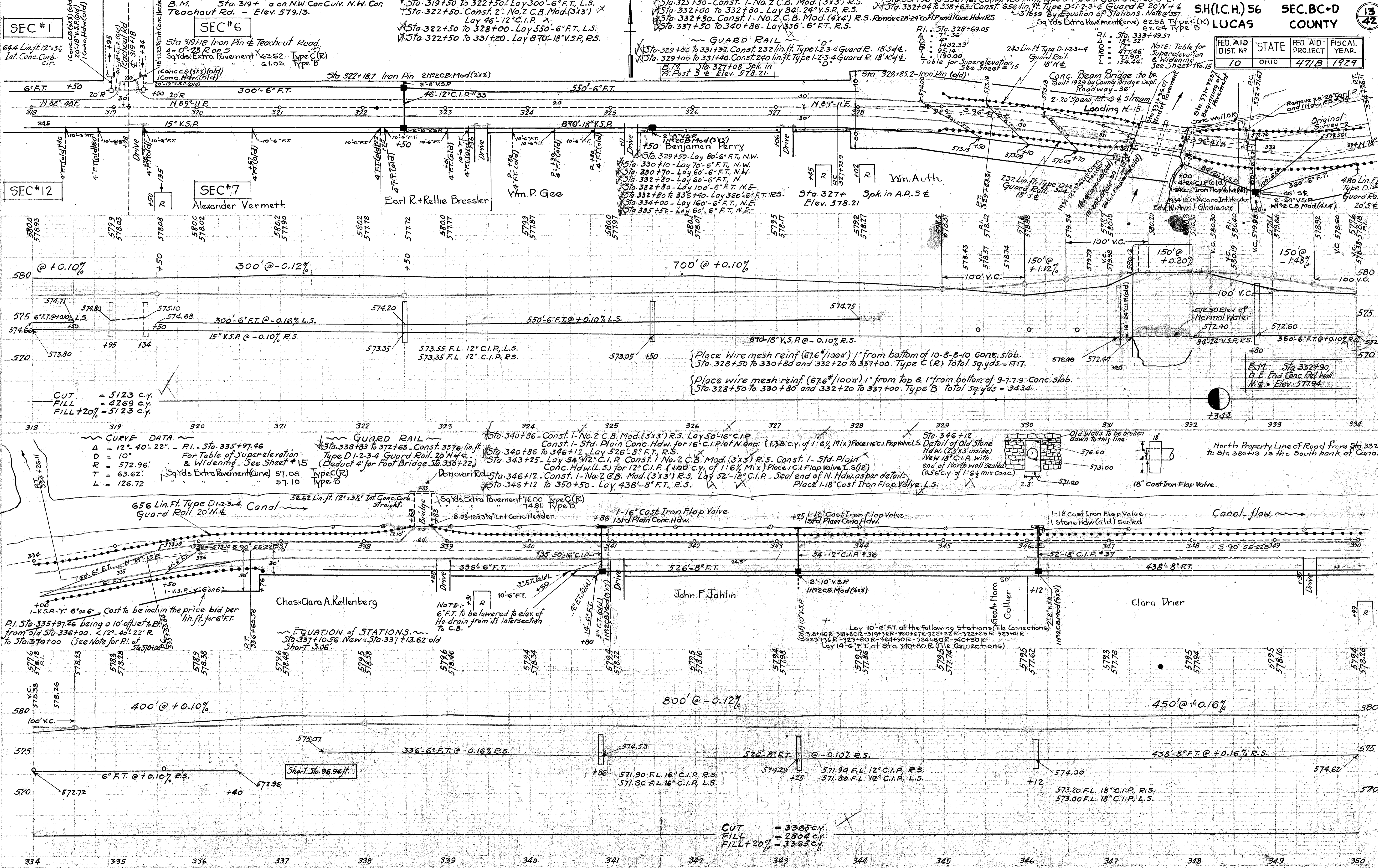
FOR ANY QUESTIONS PLEASE CONTACT ODOT DIST. 2 REAL ESTATE AT (419)353-8131

GUARD RAIL

SH(I.C.H.) 56 SEC. BC+D LUCAS COUNTY

13 42

FED. AID DIST. NO.	STATE	FED. AID PROJECT	FISCAL YEAR
10	OHIO	471B	1929



SEC #1
64.4 Lin. ft. 12" x 3/4"
Lat. Conc. Curb.
cir.

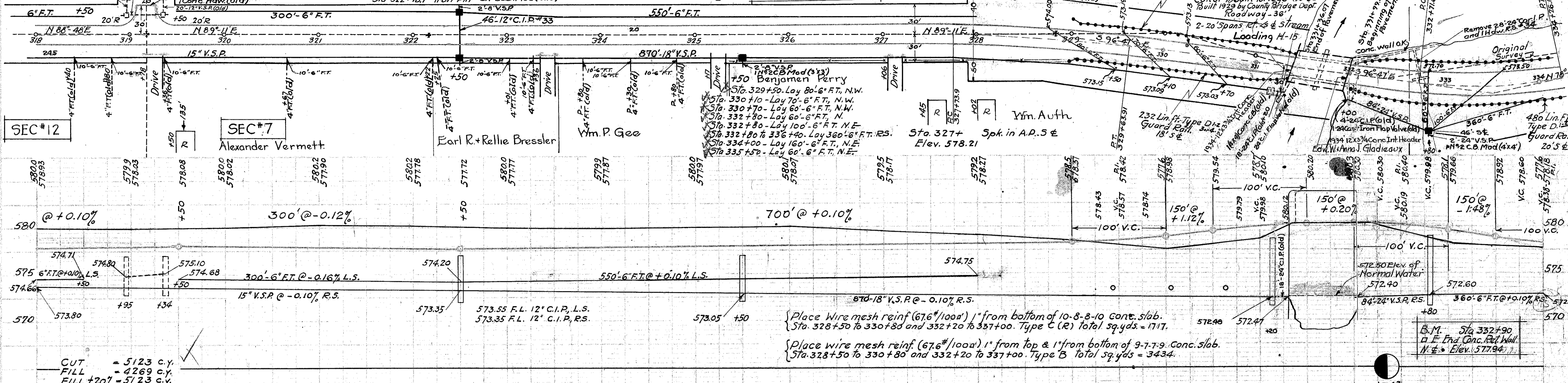
SEC #6
Sta. 319+18 Iron Pin & Teachout Road
4" - 0" 25 R op S
Sq Yds. Extra Pavement 63.52
Type C(R)
61.03
Type B

SEC #7
Alexander Vermett

SEC #12
MORGAN, H
BLUE STUBB
FLOYD

SEC #12
Ym. P. Geo

SEC #12
Earl R + Rellie Bressler



CUT = 5123 c.y.
FILL = 4269 c.y.
FILL + 20% = 5123 c.y.

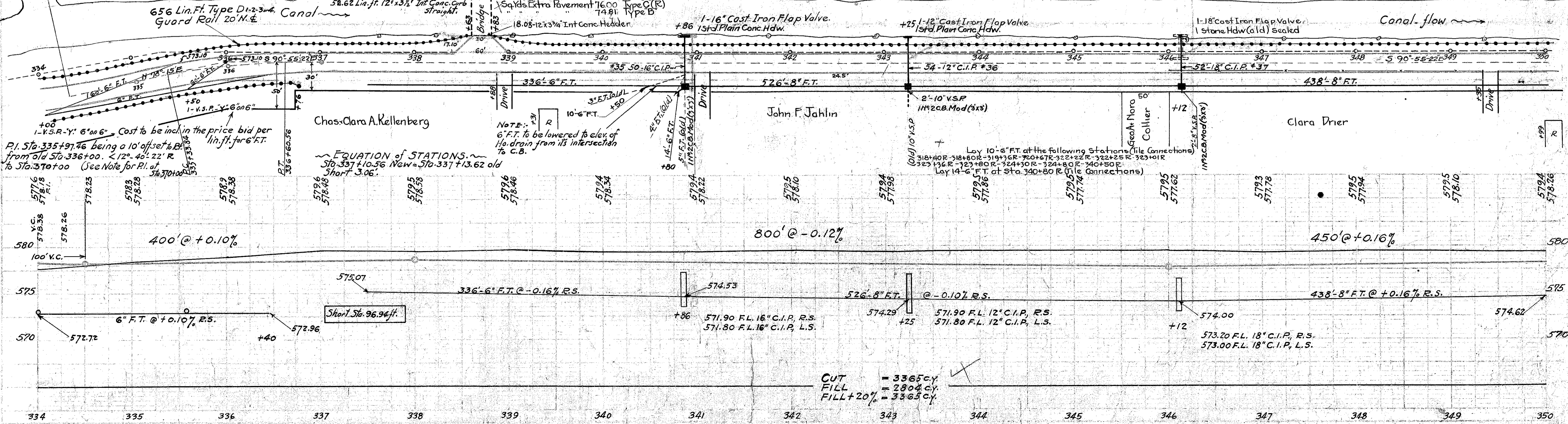
CURVE DATA
Δ = 12° 40' 22" - P.I. Sta. 335+97.46
D = 10'
R = 572.96'
T = 63.62'
L = 126.72'

GUARD RAIL
Sta. 338+83 to 372+63 - Const. 3376 lin. ft.
Type D1-2-3-4 Guard Rail, 20' N of E.
(Deduct 4' for Foot Bridge Sta. 355+22.)
Type C(R)
Type B

Donovan Rd. Sta. 346+12 - Const. 1-No. 2 C.B. Mod. (3'x3') R.S. Lay 52'-18" C.I.P.
Place 1-18" Cast Iron Flap Valve L.S.

Detail of Old Stone HdW. (23'x3' inside)
New 18" C.I.P. with
end of North wall sealed
(0.56 c.y. of 1:6 1/2 mix conc.)

North Property Line of Road from Sta. 332+00
to Sta. 386+13 is the South bank of Canal.



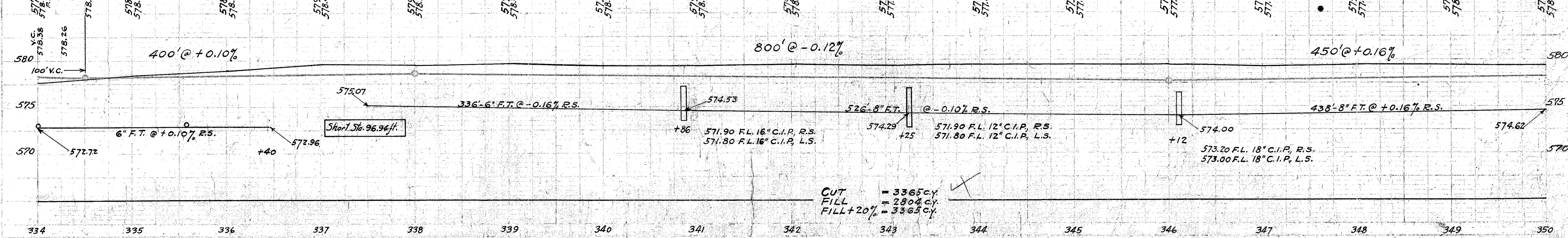
656 Lin. Ft. Type D1-2-3-4
Guard Rail 20' N of E

1-16" Cast Iron Flap Valve
1-12" Cast Iron Flap Valve
1-18" Cast Iron Flap Valve
1 Stone HdW (old) sealed

John F. Jahlin

Clara Drier

Canal flow



6" F.T. @ +0.10% R.S.

336'-6" F.T. @ -0.16% R.S.

526'-8" F.T. @ -0.10% R.S.

438'-8" F.T. @ +0.16% R.S.

574.62

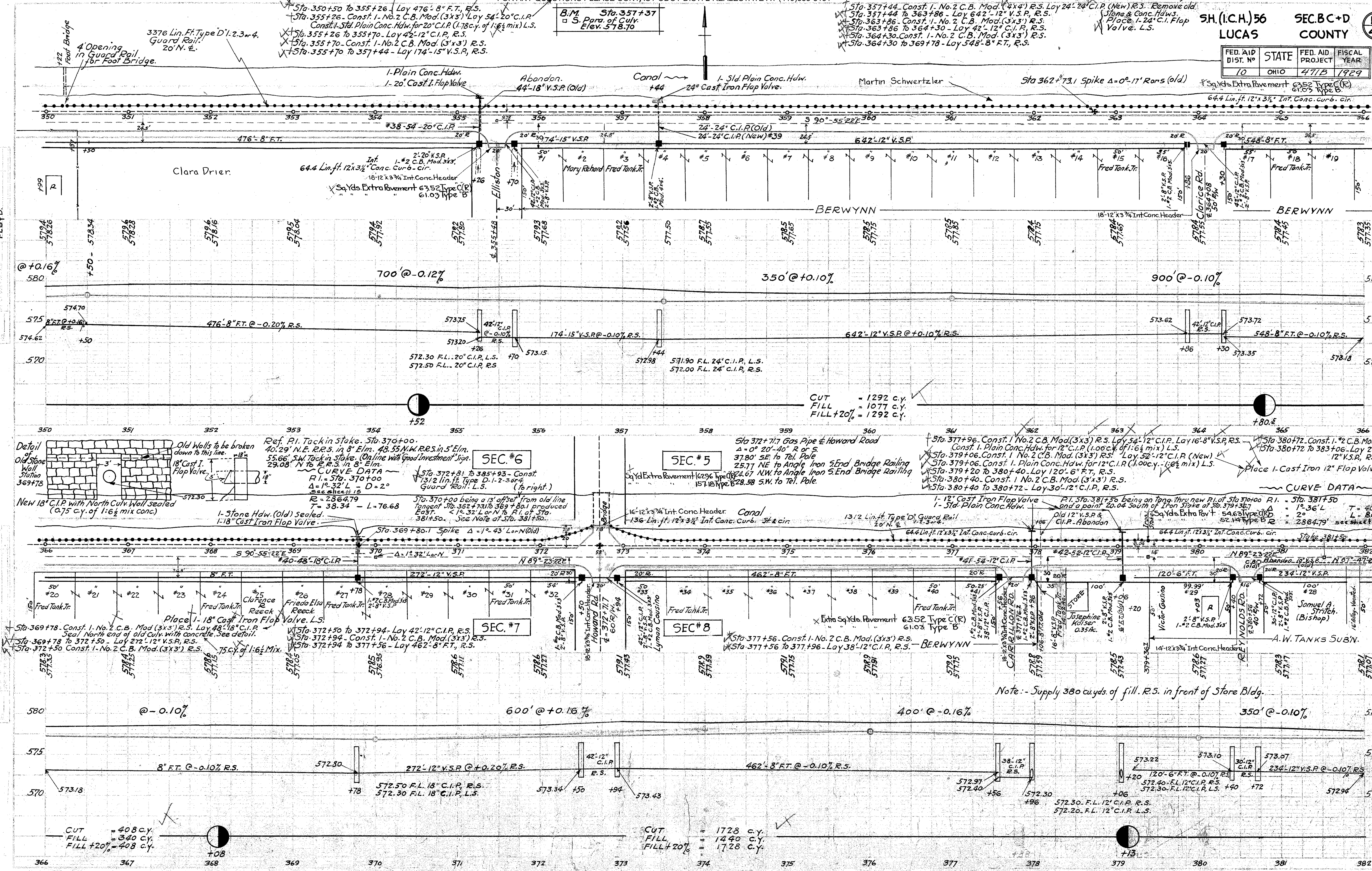
CUT = 3365 c.y.
FILL = 2804 c.y.
FILL + 20% = 3365 c.y.

FOR ANY QUESTIONS PLEASE CONTACT DIST. 2 REAL ESTATE AT (419)353-8131

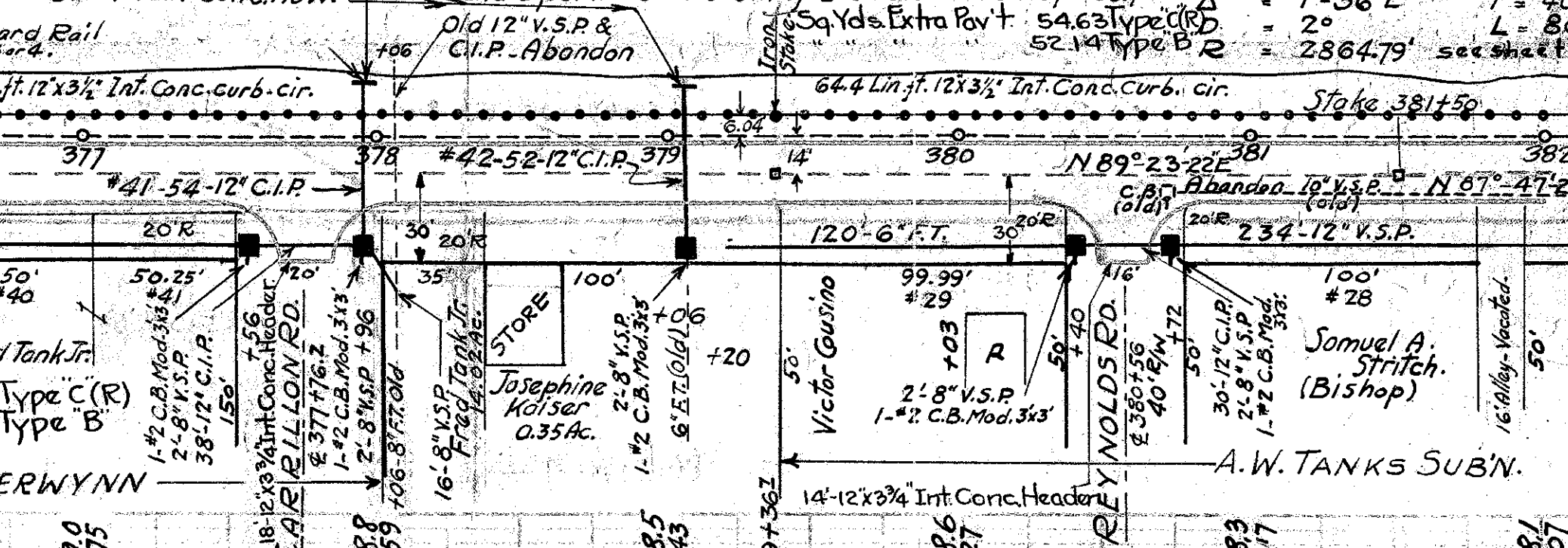
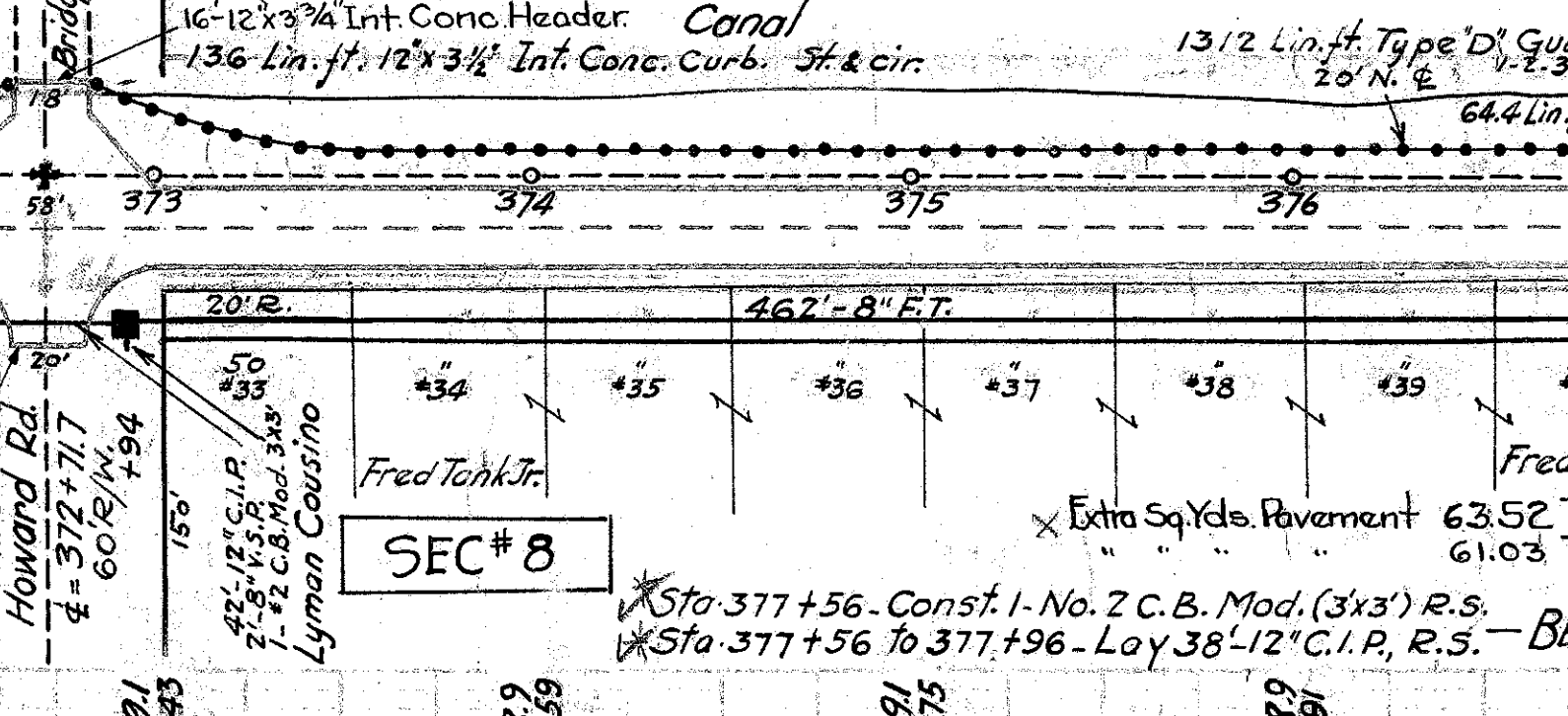
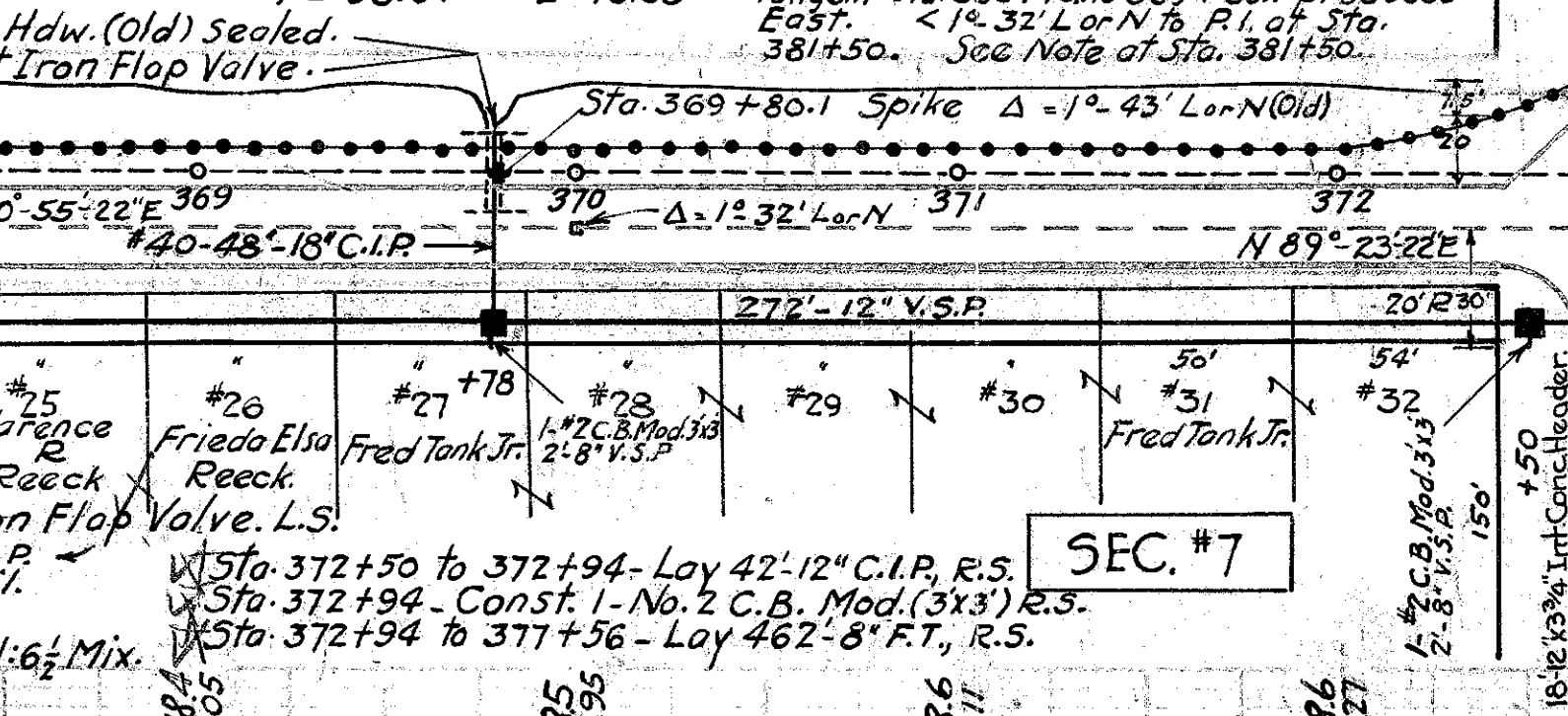
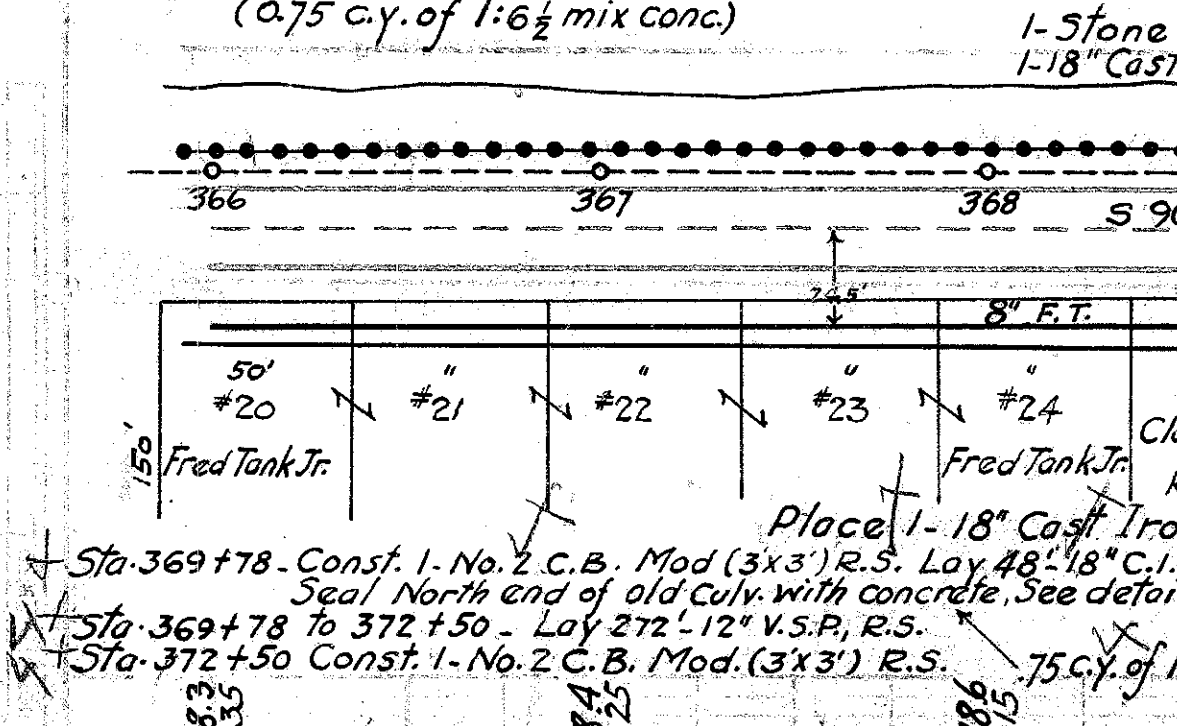
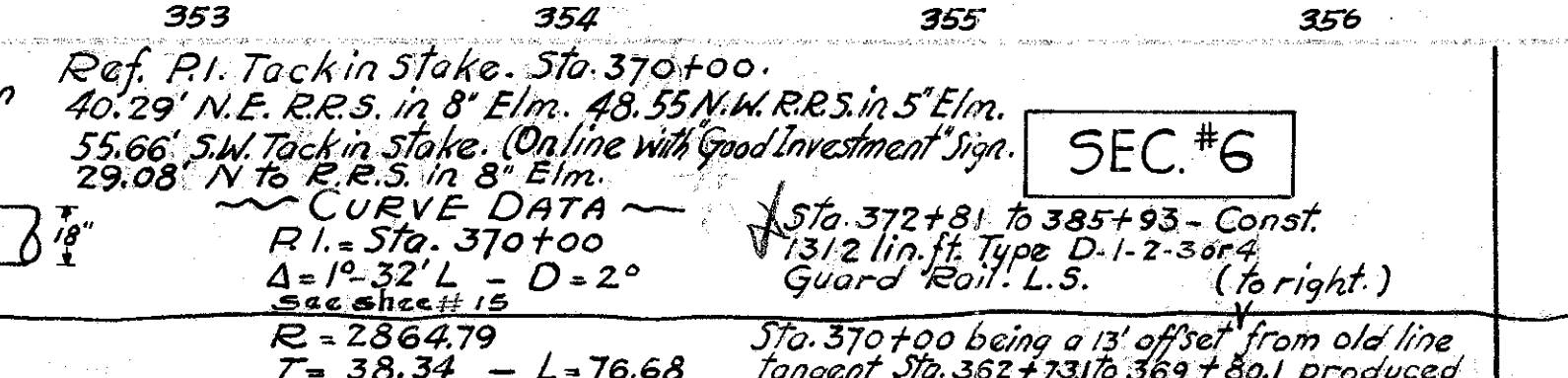
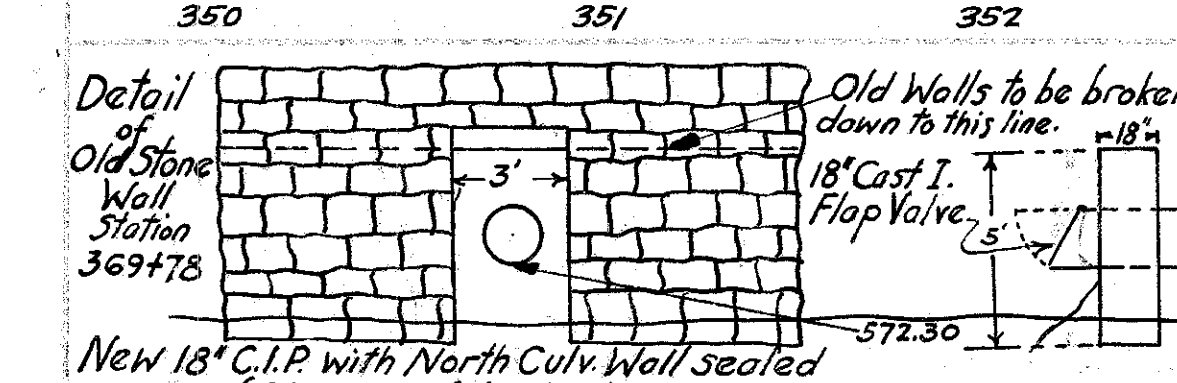
Const. 1-5' Plain Conc. Hdwr for 24" C.I.P. L.S. (2.30 c.y. of 1:6 1/2 Mix.)

SH. (I.C.H.) 56
LUCAS COUNTY
SEC. BC+D
1.4

FED. AID DIST. NO.	STATE	FED. AID PROJECT	FISCAL YEAR
10	OHIO	471B	1929



MORGAN, H.
BLUE
STUB
FLOYD



CUT = 408 c.y.
FILL = 340 c.y.
FILL + 20% = 408 c.y.

CUT = 1728 c.y.
FILL = 1440 c.y.
FILL + 20% = 1728 c.y.

Note: - Supply 380 cu yds of fill. R.S. in front of Store Bldg.

