

STATE OF OHIO DEPARTMENT OF TRANSPORTATION LUC - 2 - 27.50 (JERUSALEM ROAD-NORTH CURTICE ROAD)

LUCAS COUNTY	OHIO
LUC - 2 - 27.50	FHWA REGION 5
	FEDERAL PROJECT

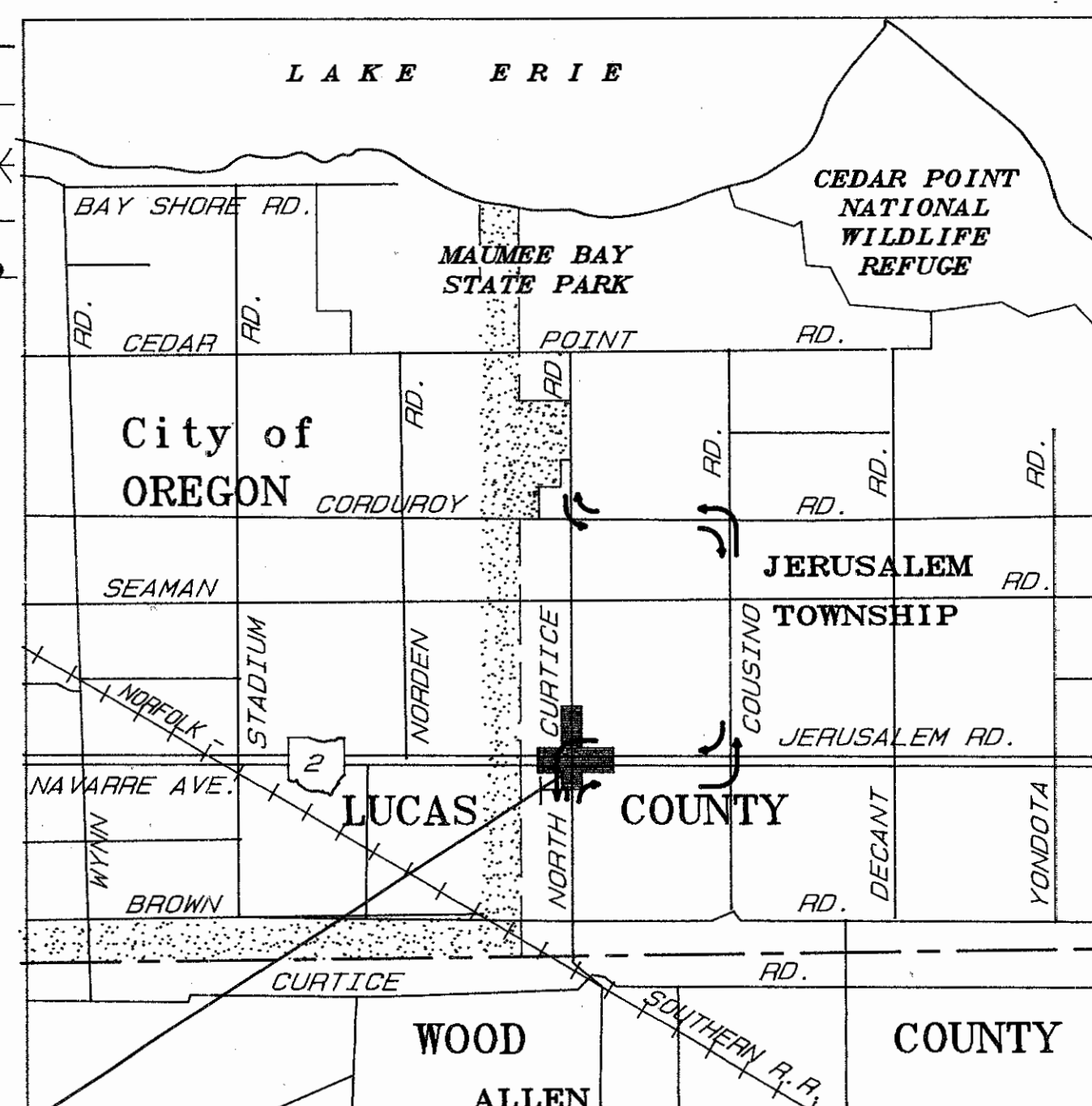
1
63

NON-FEDERAL

CONVENTIONAL SIGNS

- | | |
|--|---|
| <p>County Line -----</p> <p>Township Line -----</p> <p>Section Line -----</p> <p>Corporation Line ----- or -----</p> <p>Fence Line (exist.) x-x-x (prop.) x-x-x</p> <p>Center Line -----</p> <p>Trees (to be removed) [Symbol]</p> <p>Utility Poles: Telephone φ, Power φ, Light φ, Cable TV φ, Traffic Signal φ, Guy Pole φ</p> | <p>Limited Access (only) ----- LA -----</p> <p>Right of Way (only) ----- R/W -----</p> <p>Limited Access & Right of Way ----- LA&R/W -----</p> <p>Existing Right of Way ----- R/W -----</p> <p>Property Line ----- (in existing fence) x-x-x -----</p> <p>Railroad -----</p> <p>Guardrail (existing) [Symbol] (proposed) [Symbol]</p> <p>Water Line ----- W -----, Gas Line ----- G -----</p> <p>Sanitary ----- San -----, Storm ----- S -----</p> <p>Electrical ----- E -----, Telephone ----- T -----</p> <p>Western Union Telegraph ----- W.U.T. -----</p> |
|--|---|

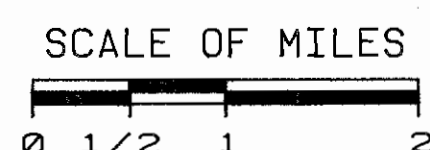
JERUSALEM TOWNSHIP LUCAS COUNTY



JERUSALEM RD. (S.R.2)
 BEGIN PROJECT = 1446+05
 END PROJECT = 1466+35

N. CURTICE RD.
 BEGIN WORK = 10+91
 END WORK = 33+25

LOCATION MAP



- PORTION TO BE IMPROVED -----
- STATE, FEDERAL & INTERSTATE ROADS ----- [Symbol]
- OTHER ROADS ----- [Symbol]
- DETOUR ROUTE ----- [Symbol]

SCALES

- PLAN AND DETAILS ----- [Symbol]
- PROFILE: ----- HORIZONTAL [Symbol] ----- VERTICAL [Symbol]
- CROSS SECTION: HORIZONTAL [Symbol] ----- VERTICAL [Symbol]

1993 SPECIFICATIONS

The standard specifications of the State of Ohio, Department of Transportation, including changes and supplemental specifications listed in the proposal shall govern this improvement.

I hereby approve these plans and declare that the making of this improvement will not require the closing to traffic of the highway, except as noted on sheet 8, and that provisions for maintenance and safety of traffic will be as set forth on the plans and estimates.

Approved George E. Wilson
 Date 10-26-92 Lucas County Engineer

Approved James J. McCarty
 Date 11-6-92 District Deputy Director of Transportation

Approved Christopher L. Panyan
 Date 5-26-93 Chief Engineer, Planning and Design

Approved Jerry LeMay
 Date 5-26-93 Director, Department of Transportation

INDEX OF SHEETS

Title Sheet	1
Schematic Plan	2
Typical Sections	3-5
General Notes	6&7, 7A
Maintenance of Traffic General Notes	8
General Summary	9, 9A & 10
Subsummaries	11-16
Drive Table & Details	17
Plan & Profile	18-28
Roadway Cross Sections	29-39
Intersection Details	40
Miscellaneous Details	41
Traffic Control General Summary	42
Lighting & Signal Subsummary	43
Pavement Marking & Sign Subsummaries	44
Signal Plan	45
Signal Details & General Notes	46&47
Signing & Striping Plan	48-49
Striping Details	49 A
Right of Way	50-63

LINE DATA

PROJECT
 Begin Project: Sta. 1446+05
 End Project: Sta. 1466+35
 Net Length of Project: 2030 Lin. Ft. or 0.384 Mi.

WORK
 S.R. 2: Sta. 1445+15 to 1467+25 = 2210 L.F.
 N. Curtice Rd.: Sta. 10+91 to 33+25 = 2234 L.F.
 Deduct for Intersection = 52 L.F.
 Total Length of Work = 4392 L.F. or 0.832 Mi.

UNDERGROUND UTILITIES

 2 WORKING DAYS
 BEFORE YOU DIG

 Call 800-362-2764 Toll Free
 OHIO UTILITIES PROTECTION SERVICE

 NON-MEMBERS
 MUST BE CALLED DIRECTLY



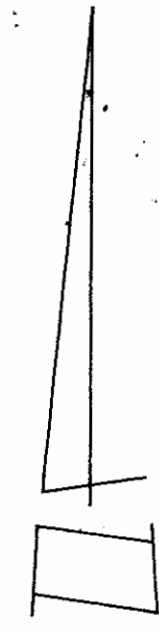
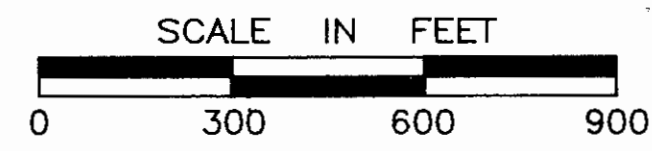
SUPPLEMENTAL PRINTS OF STANDARD CONSTRUCTION DRAWINGS							
BP-3.1	2-21-92	GR-1.1	5-6-91	HL-10.11	5-1-87	TC-51.10	1-20-84
BP-4.1	2-21-92	GR-1.2	10-30-92	HL-10.12	5-1-87	TC-51.11	1-20-84
BP-5.1	2-21-92	GR-2.1	5-6-91	HL-20.11	5-1-87	TC-52.10	4-3-79
CB-2-2A&B	5-1-79	GR-4.1	5-6-91	HL-30.11	5-1-87	TC-52.20	4-3-79
CB-2-3&2-4	5-1-79	CB-3	5-1-79	HL-30.22	5-1-87	TC-65.10	2-1-90
CB-2-5&2-6	5-1-79	MT-99.20	4-29-88	HL-60.11	5-1-87	TC-65.12	2-1-90
HW-4A	4-1-80	MT-97.10	4-29-88				
HW-4B	4-1-80	MT-97.11	10-4-89			TC-81.10	1-20-84
MC-4	7-26-76	MT-99.10	11-14-86	TC-21.20	9-1-92	TC-82.10	8-29-84
MC-8	6-12-75	MT-101.60	7-1-92	TC-22.10	9-1-92	TC-83.10	3-18-92
MC-11	8-1-78	MT-105.10	7-1-92	TC-35.10	8-29-84	TC-84.20	1-20-84
MH-1	12-18-84	MT-105.11	7-1-92	TC-41.20	3-26-79	TC-85.10	1-20-84
MH-3	12-18-84	MC-1	6-13-69	TC-41.40	6-18-79	TC-85.20	1-20-84
GR-1.3	2-21-92	CB-3A	5-1-79	TC-42.20	3-26-79		

SUPPLEMENTAL SPECIFICATIONS	
802	4-13-90
820	3-18-92
862	12-16-88
931	3-18-92
962	1-23-90
940	6-10-87
942	3-18-92
944	3-18-92

Project: LUC - 2 - 27.50
 Date of Letting _____ 19____, Contract No. _____

BY: Thomas H. Yurysta
 DATE: OCT 5 1992
 P.E. No. 41471

CENTERLINE SURVEY PLAT
LUC. - 2 - 27.50
SECTIONS 4, 5, 8 AND 9, TOWN 10 SOUTH, RANGE 9 EAST,
JERUSALEM TOWNSHIP, LUCAS COUNTY, OHIO

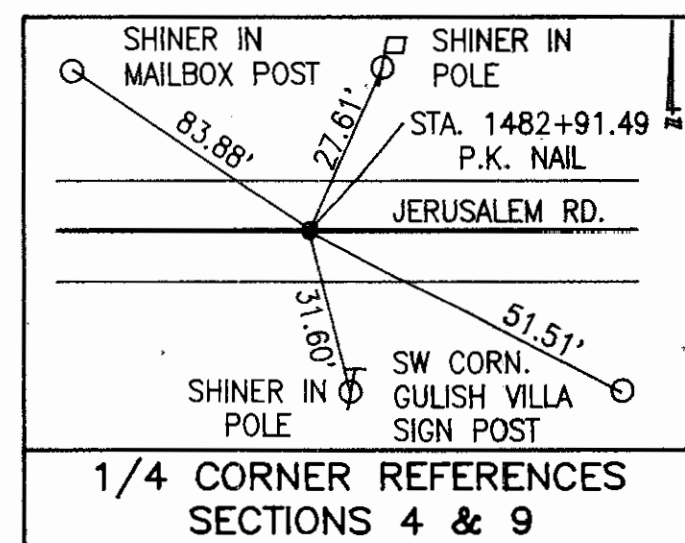
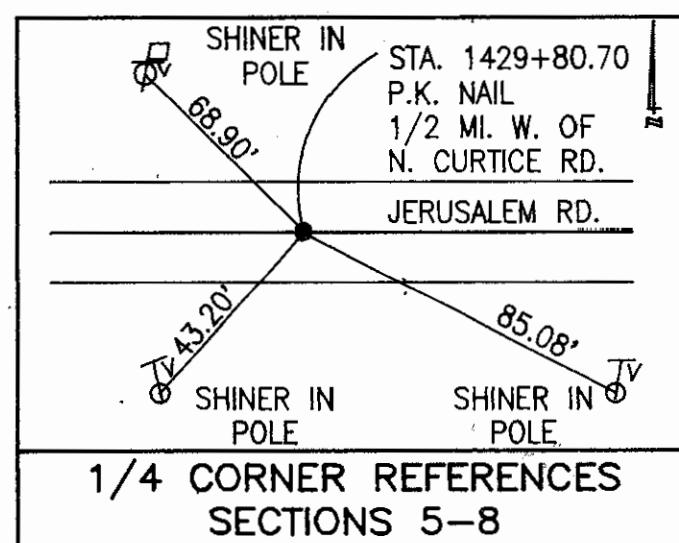


SE 1/4 SECTION 5

SOUTH 1/4 CORNER SECTION 5,
(NORTH 1/4 CORNER SECTION 8),
FOUND P.K. NAIL =
STA. 1429+80.70

NE 1/4 SECTION 8

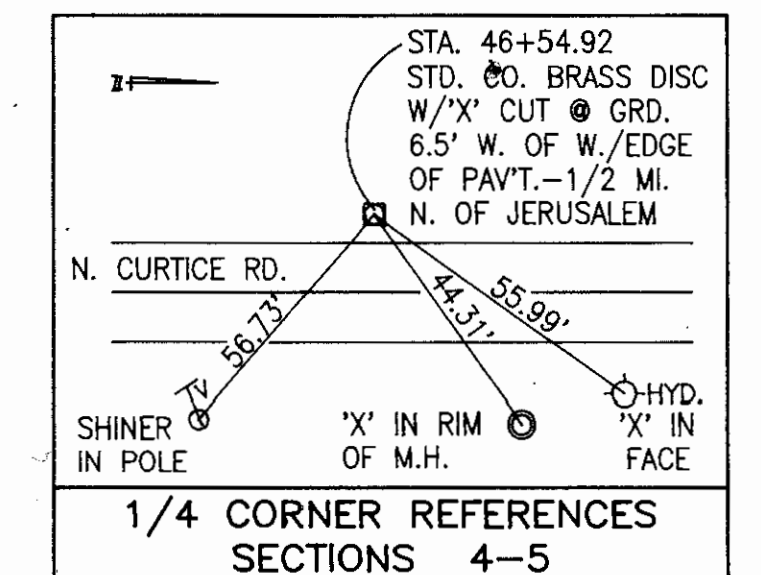
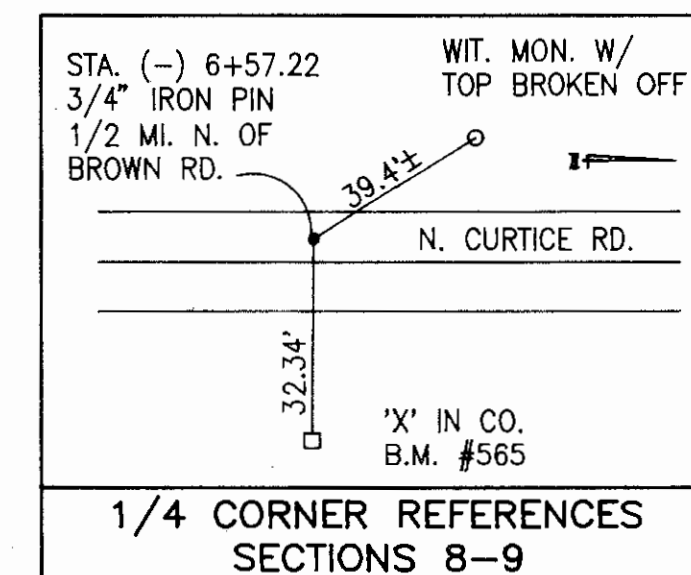
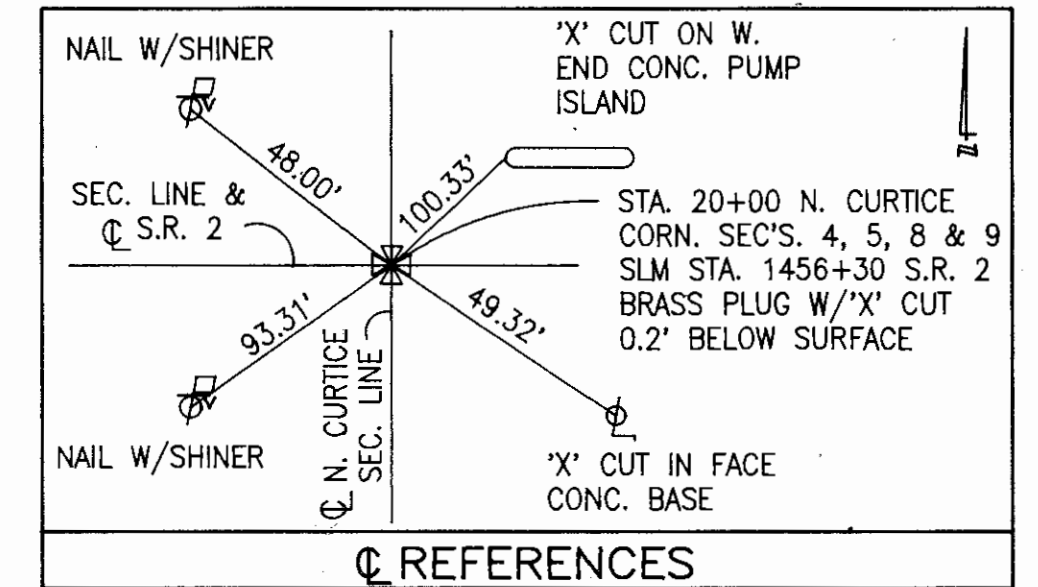
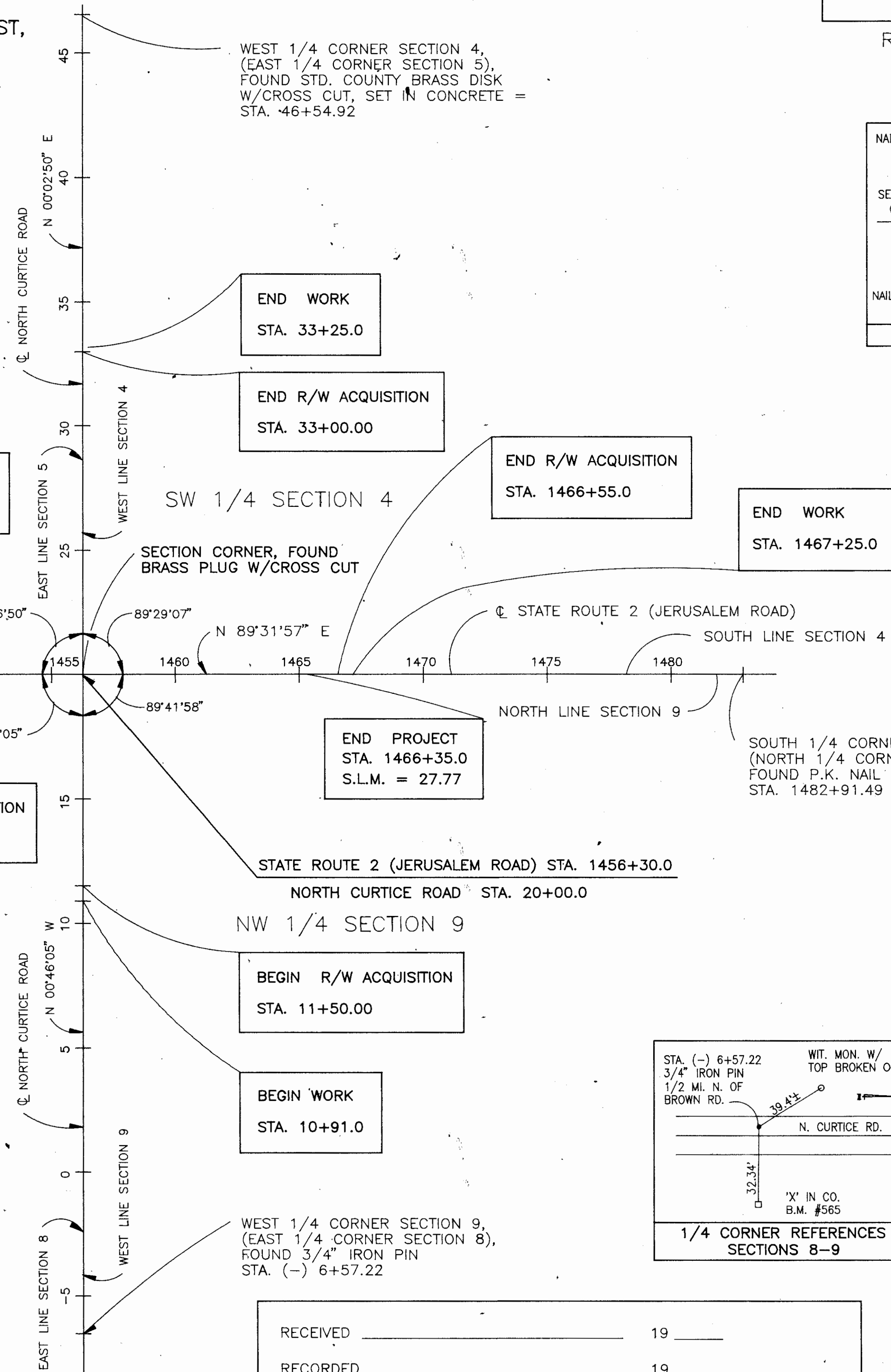
NOTE:
THE BEARINGS REFERRED TO HEREON ARE
BASED UPON AN ASSUMED MERIDIAN.



I HEREBY STATE THAT THIS PLAT IS A TRUE
DELINERATION OF A SURVEY MADE FOR THE LUCAS
COUNTY ENGINEER AND THE OHIO DEPARTMENT
OF TRANSPORTATION, BOWLING GREEN, OHIO,
IN DECEMBER 1989
BY *Thomas G. Gergich* DATE 9-28-92
THOMAS G. GERGICH, SURVEYOR NO. S-7146



CITY OF OREGON
JERUSALEM TOWNSHIP



RECEIVED _____ 19 ____

RECORDED _____ 19 ____

BOOK _____ PAGE ____

COUNTY RECORDER

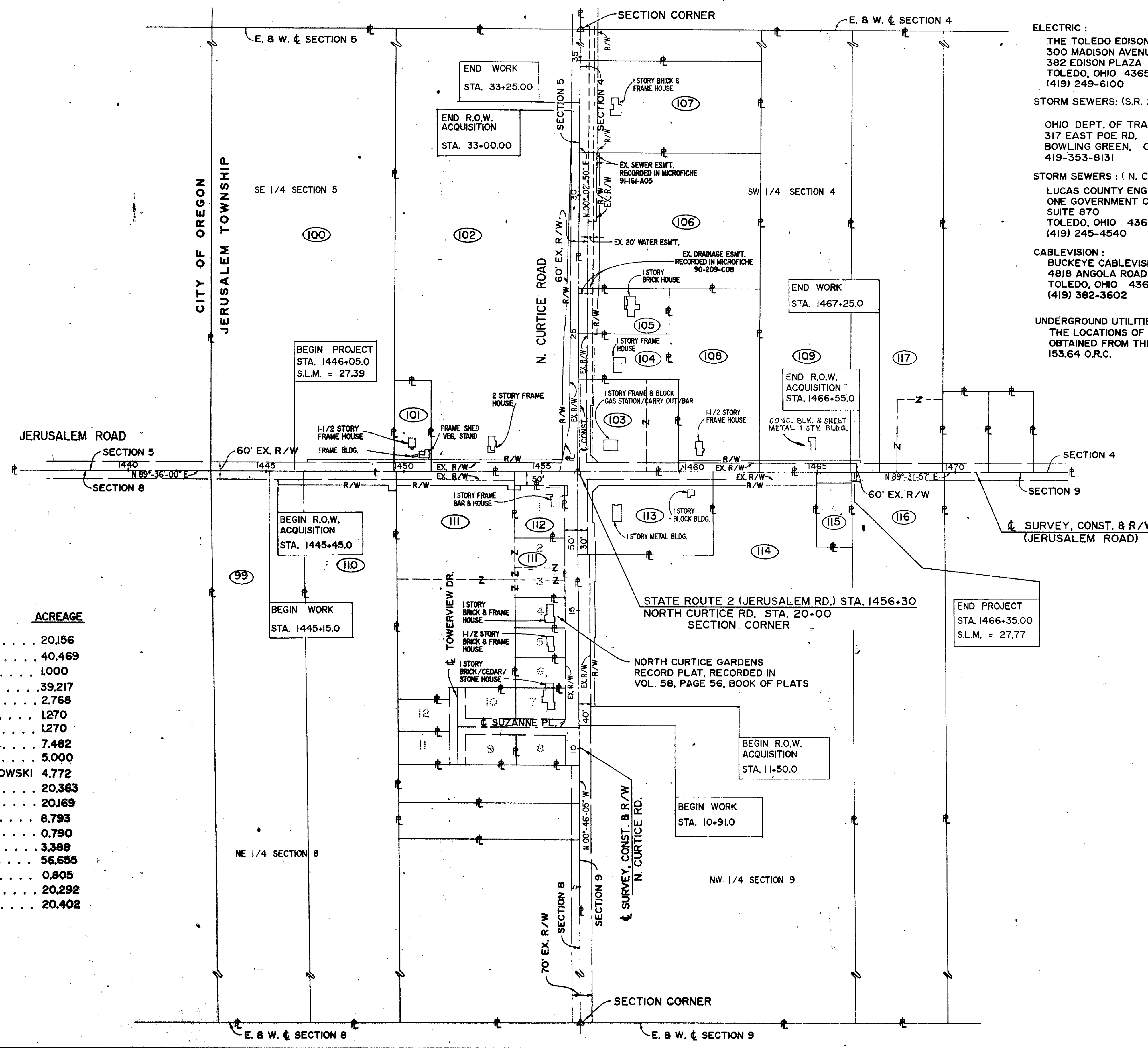
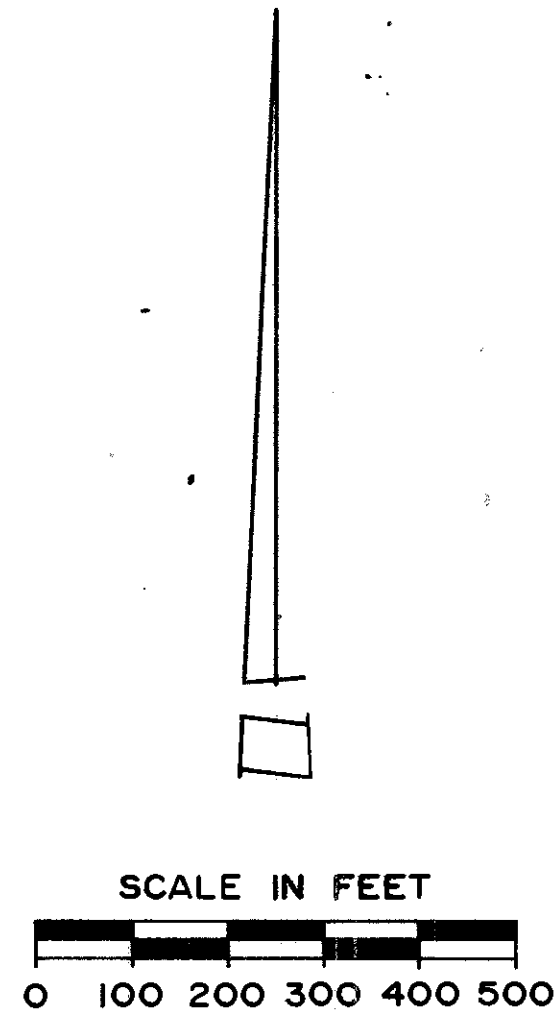
PROUDFOOT ASSOCIATES
DRAWN 2176CSP
CHECKED *CM*
APPROVED *CM*
DATE 9-28-92

PROPERTY MAP

LUC. 2-27.50
 SECTIONS 4, 5, 8 AND 9, TOWN IO SOUTH, RANGE 9 EAST,
 JERUSALEM TOWNSHIP, LUCAS COUNTY, OHIO

LUCAS COUNTY LUC - 2 - 27.50	OHIO FHWA REGION 5 FEDERAL PROJECT	51 63
---------------------------------	--	----------

R/W PLANS
 UTILITY OWNERS



ELECTRIC:
 THE TOLEDO EDISON CO.
 300 MADISON AVENUE
 382 EDISON PLAZA
 TOLEDO, OHIO 43652
 (419) 249-6100

TELEPHONE:
 G.T.E. NORTH
 300 WEST GYPSY LANE
 BOWLING GREEN, OHIO 43402
 (419) 354- 9457

STORM SEWERS: (S.R. 2)
 OHIO DEPT. OF TRANSPORTATION
 317 EAST POE RD.
 BOWLING GREEN, OH. 43402
 419-353-8131

STORM SEWERS: (N. CURTICE RD.)
 LUCAS COUNTY ENGINEER
 ONE GOVERNMENT CENTER
 SUITE 870
 TOLEDO, OHIO 43604
 (419) 245-4540

CABLEVISION:
 BUCKEYE CABLEVISION, INC.
 4818 ANGOLA ROAD
 TOLEDO, OHIO 43615
 (419) 382-3602

UNDERGROUND UTILITIES
 THE LOCATIONS OF THE UNDERGROUND UTILITIES ON THESE PLANS ARE AS OBTAINED FROM THE OWNERS OF THE UTILITIES AS REQUIRED BY SECTION 153.64 O.R.C.

WATER LINES: (20" & 24" LINES)
 CITY OF OREGON
 5330 SEAMAN ROAD
 OREGON, OHIO 43616
 (419)698-7038

WATER LINES: (8" LINE)
 LUCAS COUNTY SANITARY ENGINEER
 1111 SOUTH McCORD ROAD
 HOLLAND, OHIO 43528
 (419) 865-2353

PROPERTY OWNERS	ACREAGE
99 JOSEPH R. STVARTAK	20.156
100 CAROLINE A. & MARTHA L. HECKLINGER	40.469
101 JAMES E. & MARY E. GOBBELL	1.000
102 DWIGHT J. & BETTY A. WITTY	39.217
103 ARTHUR R. & DIANE J. REYNOLDS	2.768
104 KENNETH D. & CONSTANCE L. LAWRENCE	1.270
105 GERALD E. & JUDITH P. VONDRAN	1.270
106 WILLIAM M. & SUSAN J. McPHILLIPS	7.482
107 JUDITH K. DISBENNETT	5.000
108 JOSEPH P. DURBAN & NETTIE VIOLA GROCHOWSKI	4.772
109 TRI COUNTY TIRE INC.	20.363
110 JOHN F. & ANNA C. STVARTAK	20.169
111 DLGA CASSIS	8.793
112 JOHN E. & MARGARET J. THERIAC	0.790
113 WILHELM & KISS COMPANY	3.388
114 EDWIN J. & LYNNE C. WEILAND	56.655
115 ARTHUR R. & DIANE J. REYNOLDS	0.805
116 DORIS M. VAN BUSKIRK	20.292
117 JULIE, TERESA AND LISA DOMBKOWSKI	20.402

PARCEL NO'S. 1-98 NOT USED

PLAN COMPLETION DATE: 9-28-92

REVISED	DATE	DESCRIPTION

McDONNELL PROUDFOOT & ASSOCIATES inc. engineers planners surveyors	DRAWN JTB	CHECKED JTB	APPROVED JTB
--	--------------	----------------	-----------------

TOTAL NUMBER OF
 18 OWNERSHIPS
 TOTAL TAKES
 OWNERSHIPS WITH STRUCTURES INVOLVED
 OWNERSHIP WITH "P" ITEMS

CALC. BY: MS	LUCAS COUNTY LUC - 2 - 27.50	OHIO
DATE: 3-11-92		FHWA REGION 5
CHKD. BY: TH		
DATE: 9-28-92		
FEDERAL PROJECT	STATE PROJECT	

52
63

3
14

SUMMARY OF ADDITIONAL RIGHT-OF-WAY

NOTE :
 WV PARCELS TO BE ACQUIRED IN THE NAME OF
 LUCAS COUNTY COMMISSIONERS.

PARCEL	OWNER	SHEET NO.	OWNER'S RECORD		RECORD AREA	TOTAL P.R.O	GROSS TAKE	P.R.O. IN TAKE	NET TAKE	STRUCTURE	NET RESIDUE		TYPE FUND	REMARKS AND PERSONALTY	AS ACQUIRED		
			BOOK	PAGE							LEFT	RIGHT			BOOK	PAGE	
99 WD	JOSEPH R. STVARTAK	4	2256	113	20.156 AC.	0.228 AC.	0.105 AC.	0.063 AC.	0.042 AC.			19.886 AC.	STATE	NOTE : PARCEL NO'S. 1 THRU 98 NOT USED			
100 WD	CAROLINE A. & MARTHA L. HECKLINGER	4	2750 & 2750	169 171	40.469 AC.	0.456 AC.	0.296 AC.	0.222 AC.	0.074 AC.		39.939 AC.						
100 T		4				0			0.007 AC.						DRIVE CONSTRUCTION - TEMPORARY DURATION 12 MONTHS		
101 WD	JAMES E. & MARY E. GOBBELL	4 & 5	890169	E10	1.000 AC.	0.091 AC.	0.121 AC.	0.091 AC.	0.030 AC.		0.879 AC.						
102 WD	DWIGHT J. & BETTY A. WITTY	5,6, & 12	1934	240	39.217 AC.	1.987 AC.	0.446 AC.	0.323 AC.	0.123 AC.		36.661 AC.						
102 WV		6,12,13 & 14					1.177 AC.	0.731 AC.	0.446 AC.								
103 WD	ARTHUR R. & DIANE J. REYNOLDS	6,7 & 12	78 0661	CO4	2.768 AC.	0.458 AC.	0.363 AC.	0.254 AC.	0.109 AC.			2.201 AC.					
103 T		6				0			0.031 AC.						DRIVE CONSTRUCTION - TEMPORARY DURATION 12 MONTHS		
104 WV	KENNETH D. & CONSTANCE L. LAWRENCE	12	80 0333	A04	1.270 AC.	0.114 AC.	0.208 AC.	0.114 AC.	0.094 AC.			1.062 AC.					
105 WV	GERALD E. & JUDITH P. VONDRAN	12 & 13	880347	EO1	1.270 AC.	0.114 AC.	0.250 AC.	0.114 AC.	0.136 AC.			1.020 AC.					
106 WV	WILLIAM M. & SUSAN J. McPHILLIPS	13 & 14	910059	B10	7.482 AC.	0.506 AC.	0.787 AC.	0.506 AC.	0.281 AC.			6.695 AC.					
107 NOT USED																	
108 WD	JOSEPH P. DURBAN & NETTIE VIOLA GROCHOWSKI	7 & 8	2662	178	4.772 AC.	0.207 AC.	0.275 AC.	0.207 AC.	0.068 AC.		4.497 AC.						
109 WD	TRI COUNTY TIRE, INC.	8	870411	D11	20.363 AC.	0.229 AC.	0.305 AC.	0.229 AC.	0.076 AC.		20.058 AC.						
110 WD	JOHN F. & ANNA C. STVARTAK	4	2261	173	20.169 AC.	0.228 AC.	0.391 AC.	0.228 AC.	0.163 AC.			19.778 AC.					
111WD	OLGA CASSIS	4,5,10 & 11	1427 & 880092 & 880092	240 CO2 CO4	8.793 AC.	0.295 AC.	0.499 AC.	0.295 AC.	0.204 AC.			8.294 AC.					
112 S	JOHN E. & MARGARET J. THERIAC	5,6 & 11	880128	B02	0.790 AC.	0	0.008 AC.	0	0.008 AC.			0.782 AC.			TO CONSTRUCT SEWER		
113 WD	WILHELM & KISS COMPANY	6,7 & 11	770063	DO6	3.388 AC.	0.525 AC.	0.626 AC.	0.387 AC.	0.239 AC.			2.513 AC.					
113 WV		11					0.249 AC.	0.138 AC.	0.111 AC.								
114 WD	EDWIN J. & LYNNE C. WEILAND	7, & 8	850436	AO1	56.655 AC.	0.259 AC.	0.432 AC.	0.259 AC.	0.173 AC.			55.546 AC.					
114 WV		10 & 11				0.505 AC.	0.677 AC.	0.505 AC.	0.172 AC.								
115 WD	ARTHUR R. & DIANE J. REYNOLDS	8	790587	E7	0.805 AC.	0.089 AC.	0.119 AC.	0.089 AC.	0.030 AC.			0.686 AC.					
116 WD	DORIS M. VAN BUSKIRK	8 & 9	2741	17	20.292 AC.	0.229 AC.	0.022 AC.	0.019 AC.	0.003 AC.			20.060 AC.					
117 WD	JULIE, TERESA & LISA DOMBKOWSKI	8 & 9	880090	A12	20.402 AC.	0.229 AC.	0.025 AC.	0.018 AC.	0.007 AC.		20.166 AC.						

PLAN COMPLETION DATE: 9-28-92

REVISION	DATE	DESCRIPTION



NOTE: CONSTRUCTION LIMITS ARE TO THE R/W, UNLESS OTHERWISE SHOWN.

LUC - 2 - 27.50
LUCAS COUNTY

LUCAS COUNTY
LUC - 2 - 27.50

OHIO
FHWA
REGION 5
FEDERAL
PROJECT

53
63

4
14

R/W PLANS

JAMES E. & MARY E. GOBBELL
1000 ACRES

SE 1/4 SECTION 5, T. 10 S., R. 9 E.,
JERUSALEM, TWP.

CAROLINE A. & MARTHA L. HECKLINGER
40.469 ACRES

100 WD: TBA = 0.074 Ac.
PRO = 0.222 Ac.
TOTAL TAKE = 0.296 ACRES
100T: TBA = 0.007 Ac.

AGRICULTURAL

CULTIVATED FIELD

AGRICULTURAL

AGRICULTURAL

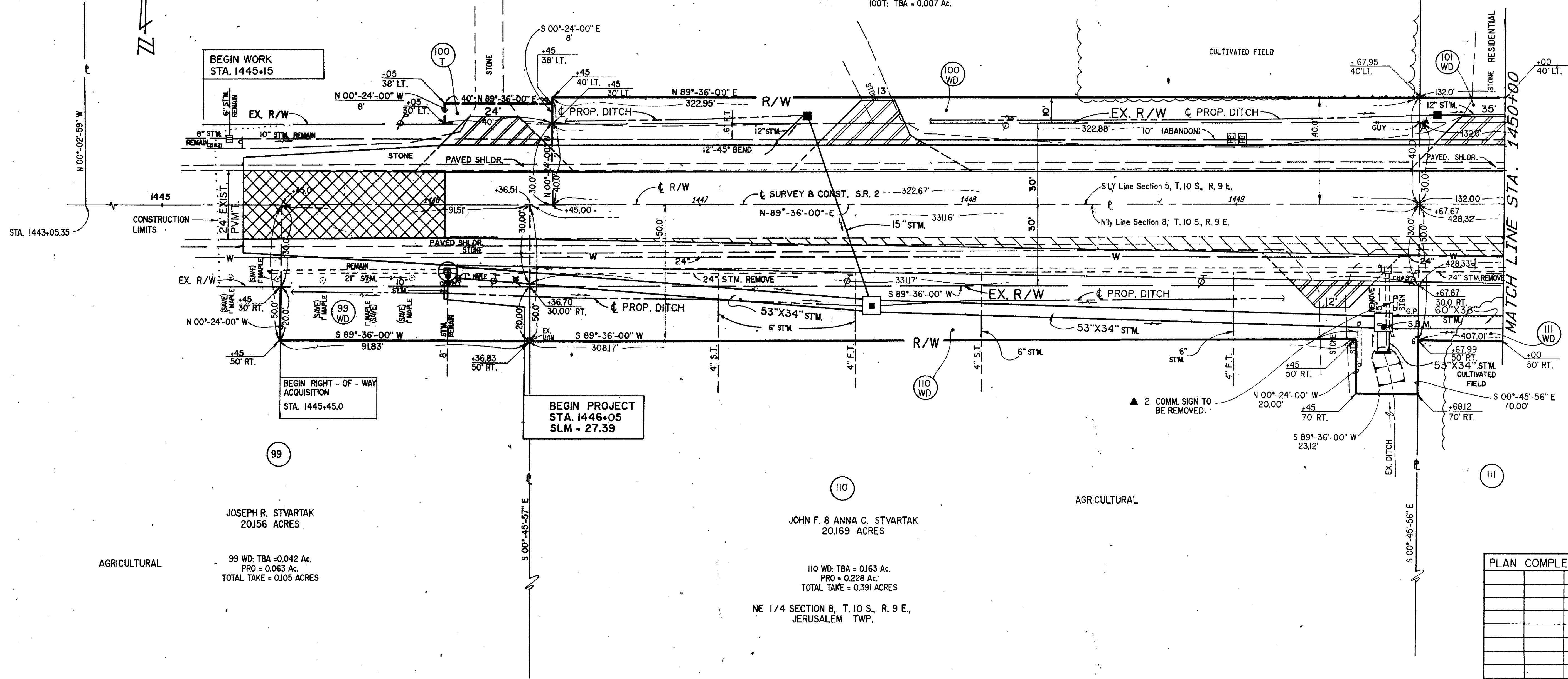
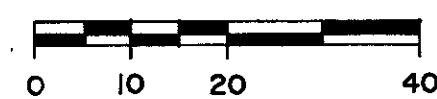
JOSEPH R. STVARTAK
20156 ACRES

99 WD: TBA = 0.042 Ac.
PRO = 0.063 Ac.
TOTAL TAKE = 0.105 ACRES

JOHN F. & ANNA C. STVARTAK
20169 ACRES

110 WD: TBA = 0.163 Ac.
PRO = 0.228 Ac.
TOTAL TAKE = 0.391 ACRES

NE 1/4 SECTION 8, T. 10 S., R. 9 E.,
JERUSALEM TWP.



MATCH LINE STA. 1450+00

PLAN COMPLETION DATE: 9-28-92

REV'D.	DATE	DESCRIPTION

REV'D.	DATE	DESCRIPTION	CHECKED	APPROVED



NOTE:
S.T. - DENOTES STORM TILE
F.T. - DENOTES FIELD TILE

LUC - 2 - 27.50
LUCAS COUNTY

NOTE: CONSTRUCTION LIMITS ARE TO THE
R/W, UNLESS OTHERWISE SHOWN.

LUCAS COUNTY
LUC - 2 - 27.50

OHIO
FHWA
REGION 5
FEDERAL
PROJECT

55
63

6
14

SW 1/4 SECTION 4, T. 10 S., R. 9 E.,
JERUSALEM TWP.

R/W PLANS

SE 1/4 SECTION 5, T. 10 S., R. 9 E.,
JERUSALEM TWP.

102 WD: T.B.A. = 0.123 Ac.
P.R.O. = 0.323 Ac.
TOTAL TAKE = 0.446 Ac.

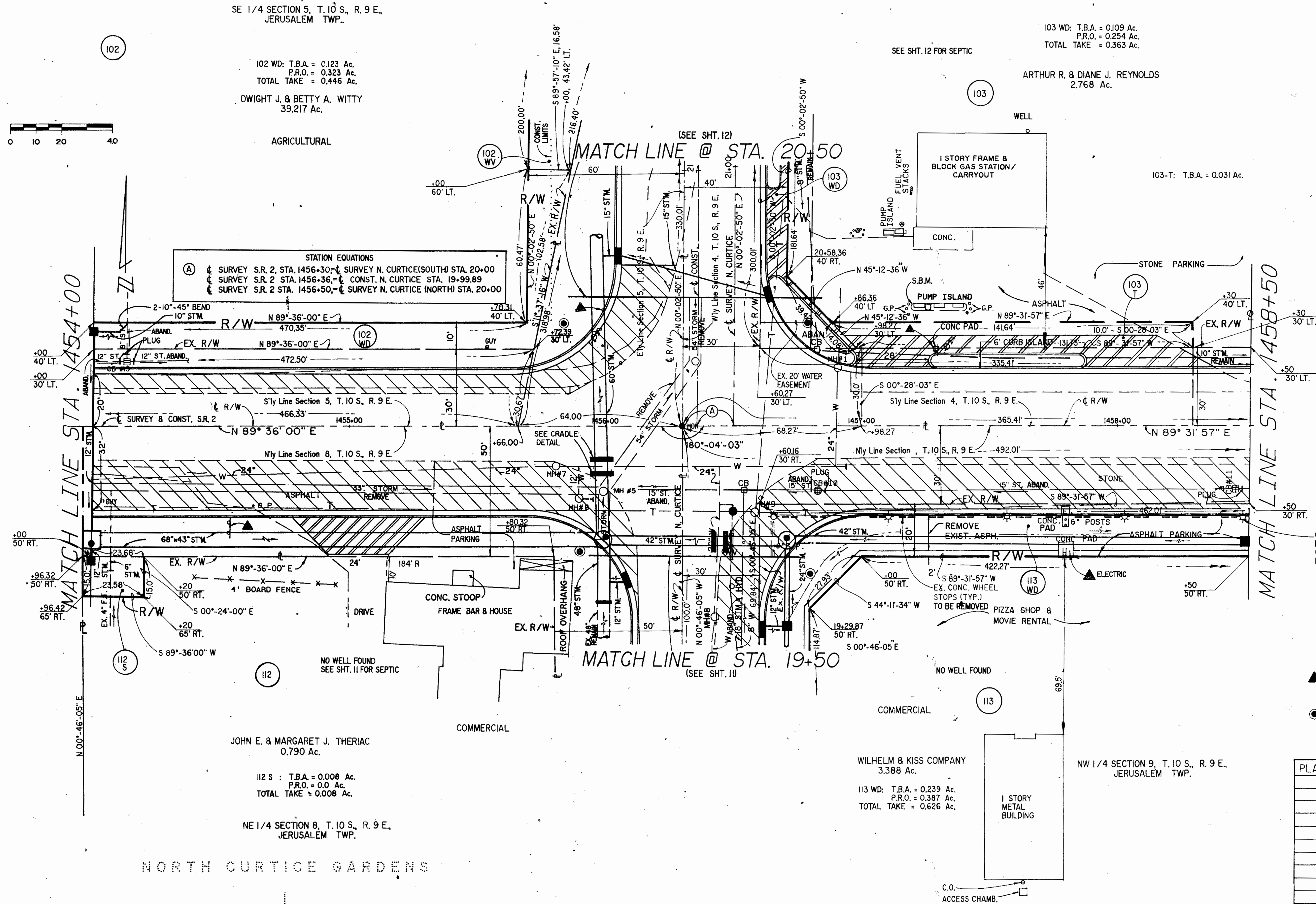
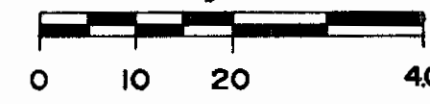
DWIGHT J. & BETTY A. WITTY
39.217 Ac.

AGRICULTURAL

103 WD: T.B.A. = 0.109 Ac.
P.R.O. = 0.254 Ac.
TOTAL TAKE = 0.363 Ac.

ARTHUR R. & DIANE J. REYNOLDS
2.768 Ac.

103-T: T.B.A. = 0.031 Ac.



STATION EQUATIONS
A SURVEY S.R. 2 STA. 1456+30 = SURVEY N. CURTICE(SOUTH) STA. 20+00
SURVEY S.R. 2 STA. 1456+36 = CONST. N. CURTICE STA. 19+99.89
SURVEY S.R. 2 STA. 1456+50 = SURVEY N. CURTICE (NORTH) STA. 20+00

6 - LIGHT POLES ALONG S.R. 2 TO BE
REMOVED (TYP)
CONC. POLE BASES TO BE REMOVED
BY THE CONTRACTOR.

▲ DENOTES COMMERCIAL SIGM. TO BE REMOVED.
CONC. BASES OR PADS TO BE REMOVED BY THE
CONTRACTOR.
● DENOTES "STEEL STRAIN" TRAFFIC POLES
(NO WIRES)

JOHN E. & MARGARET J. THERIAC
0.790 Ac.
112 S : T.B.A. = 0.008 Ac.
P.R.O. = 0.0 Ac.
TOTAL TAKE = 0.008 Ac.

NE 1/4 SECTION 8, T. 10 S., R. 9 E.,
JERUSALEM TWP.

NORTH CURTICE GARDENS

WILHELM & KISS COMPANY
3.388 Ac.
113 WD: T.B.A. = 0.239 Ac.
P.R.O. = 0.387 Ac.
TOTAL TAKE = 0.626 Ac.

NW 1/4 SECTION 9, T. 10 S., R. 9 E.,
JERUSALEM TWP.

PLAN COMPLETION DATE: 9-28-92

REV'D.	DATE	DESCRIPTION	CALCULATED

NOTE:
S.T. - DENOTES STORM TILE
F.T. - DENOTES FIELD TILE

PROUDFOOT ASSOCIATES
ENGINEERS SURVEYORS PLANNERS

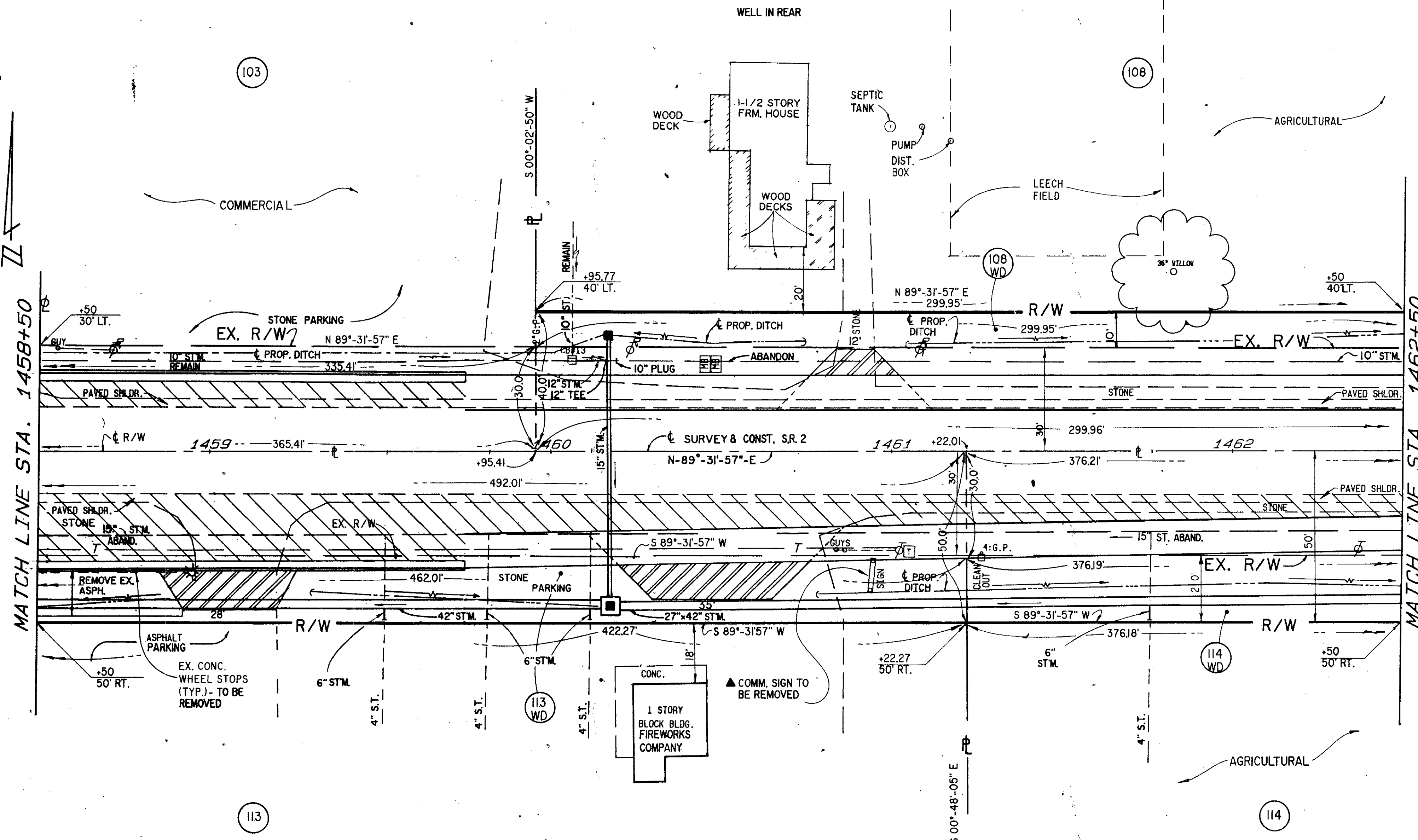
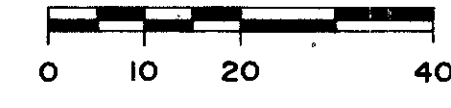
CHECKED: [Signature]
APPROVED: [Signature]

ARTHUR R. & DIANE J. REYNOLDS
.2768 Ac.

103 WD: T.B.A. = 0.109 Ac.
P.O.R. = 0.254 Ac.
TOTAL TAKE = 0.363 Ac.

JOSEPH P. DURBAN & NETTIE VIOLA GROCHOWSKI
4.772 Ac.

108 WD: T.B.A. = 0.088 Ac.
P.O.R. = 0.207 Ac.
TOTAL TAKE = 0.275 Ac.



WILHELM & KISS COMPANY
3.388 Ac.

113 WD: T.B.A. = 0.239 Ac.
P.O.R. = 0.387 Ac.
TOTAL TAKE = 0.626 Ac.

NW 1/4 SECTION 9, T. 10 S., R. 9 E.,
JERUSALEM TWP.

EDWIN J. & LYNNE C. WEILAND
56.655 Ac.

114 WD: T.B.A. = 0.173 Ac.
P.O.R. = 0.259 Ac.
TOTAL TAKE = 0.432 Ac.

PLAN COMPLETION DATE: 9-28-92

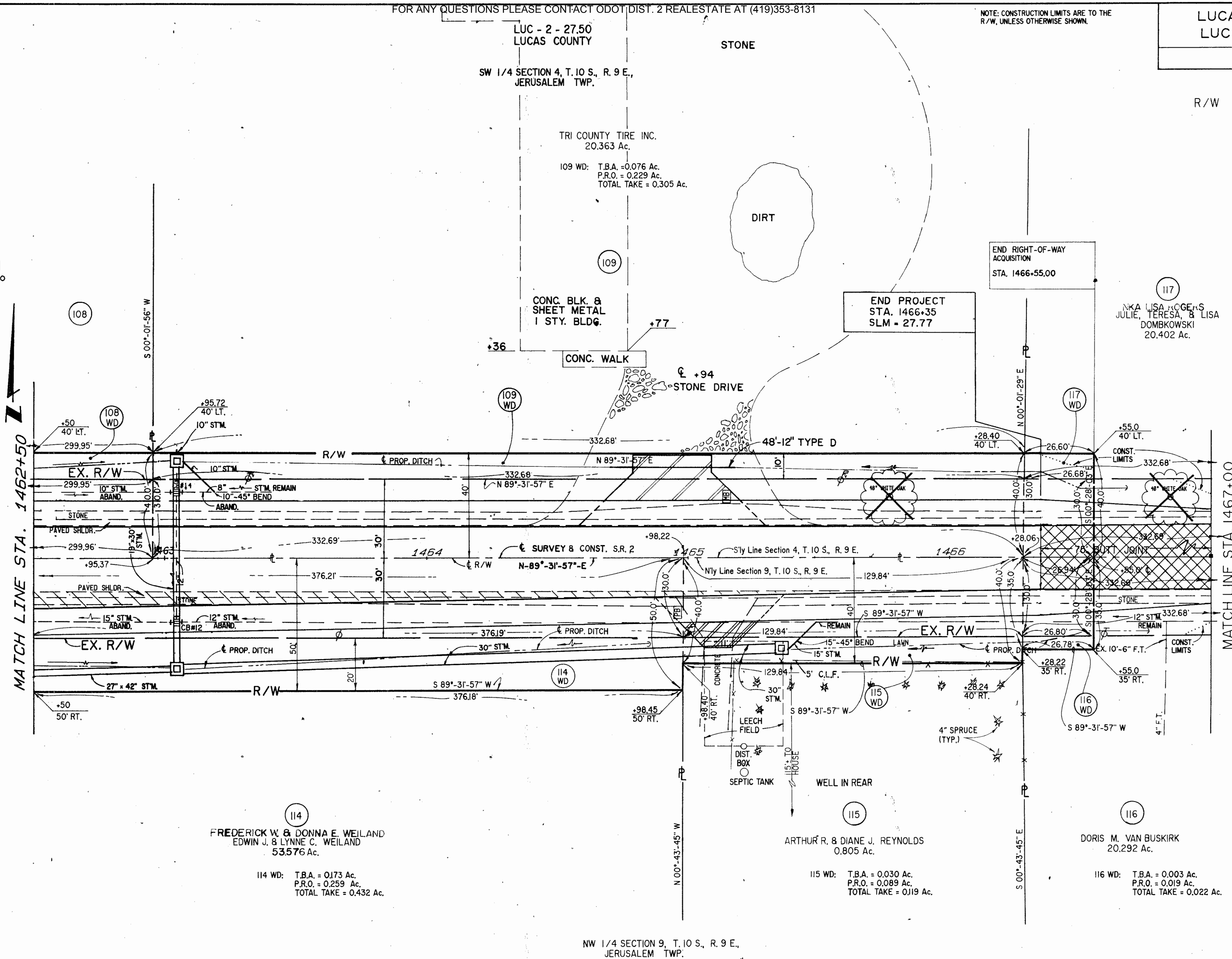
REV'D.	DATE	DESCRIPTION	CALCULATED

NOTE:
S.T. - DENOTES STORM TILE
F.T. - DENOTES FIELD TILE

PROUDFOOT ASSOCIATES
ENGINEERS SURVEYORS PLANNERS

CHECKED: *[Signature]*
APPROVED: *[Signature]*

R/W PLANS



MATCH LINE STA. 1462+50

MATCH LINE STA. 1467+00

114
FREDERICK W. & DONNA E. WEILAND
EDWIN J. & LYNNE C. WEILAND
53.576 Ac.

114 WD: T.B.A. = 0.173 Ac.
P.R.O. = 0.259 Ac.
TOTAL TAKE = 0.432 Ac.

NW 1/4 SECTION 9, T. 10 S., R. 9 E.,
JERUSALEM TWP.

115
ARTHUR R. & DIANE J. REYNOLDS
0.805 Ac.

115 WD: T.B.A. = 0.030 Ac.
P.R.O. = 0.089 Ac.
TOTAL TAKE = 0.119 Ac.

116
DORIS M. VAN BUSKIRK
20.292 Ac.

116 WD: T.B.A. = 0.003 Ac.
P.R.O. = 0.019 Ac.
TOTAL TAKE = 0.022 Ac.

PLAN COMPLETION DATE: 9-28-92

REV'D.	DATE	DESCRIPTION

2-10-93	ENR/ISSUED FOR PAR 117		

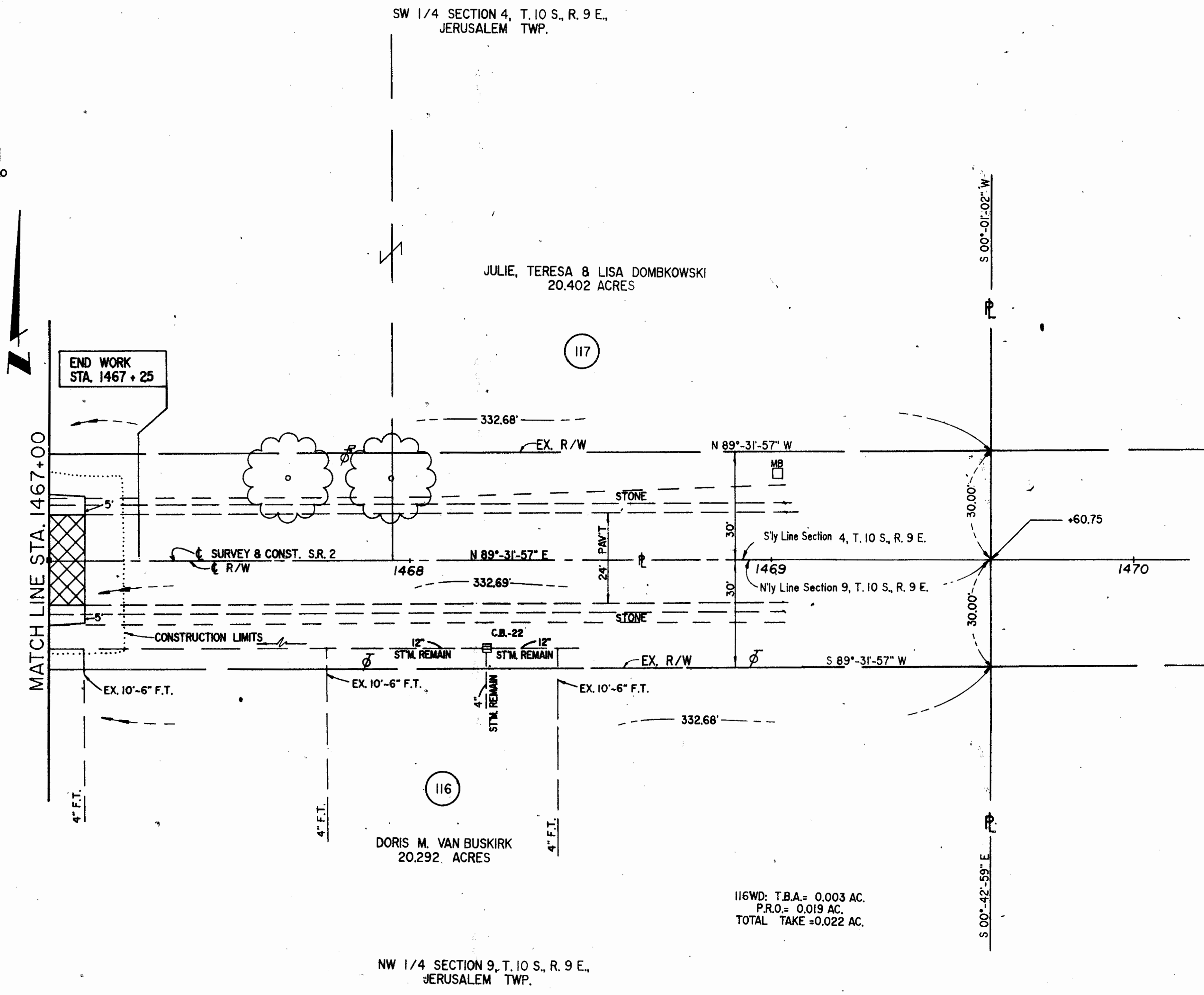
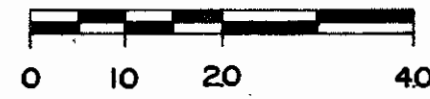
NOTE:
S.T. - DENOTES STORM TILE
F.T. - DENOTES FIELD TILE

PROUDFOOT ASSOCIATES
ENGINEERS SURVEYORS PLANNERS

DRAWN: [Signature]
CHECKED: [Signature]
APPROVED: [Signature]

R/W PLANS

LUC - 2 - 27.50
LUCAS COUNTY



116WD: T.B.A. = 0.003 AC.
P.R.O. = 0.019 AC.
TOTAL TAKE = 0.022 AC.

PLAN COMPLETION DATE: 9-28-92

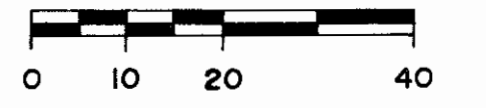
REV'D.	DATE	DESCRIPTION	CALCULATED

NOTE:
S.T. - DENOTES STORM TILE
F.T. - DENOTES FIELD TILE

PROUDFOOT ASSOCIATES
ENGINEERS SURVEYORS PLANNERS

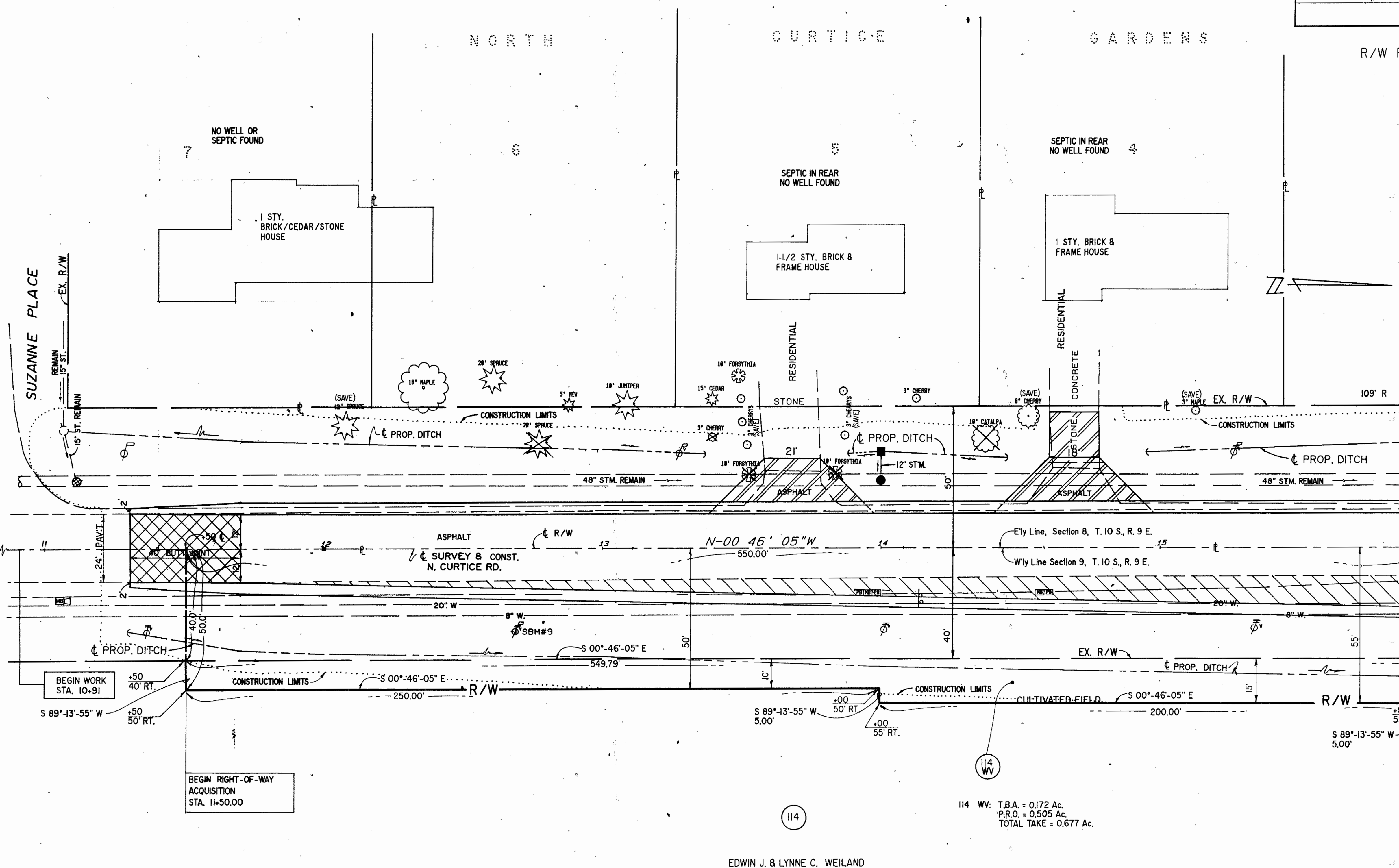
DRAWN	SW	CALCULATED
CHECKED	DLB	APPROVED

R/W PLANS



OLGA CASSIS
 8.793 Ac.
 111 WD: T.B.A. = 0.204 Ac.
 P.R.O. = 0.295 Ac.
 TOTAL TAKE = 0.499 Ac.

AGRICULTURE



STA. (-) 6+57.22

BEGIN WORK
 STA. 10+91

BEGIN RIGHT-OF-WAY
 ACQUISITION
 STA. 11+50.00

114

114 WV: T.B.A. = 0.172 Ac.
 P.R.O. = 0.505 Ac.
 TOTAL TAKE = 0.677 Ac.

EDWIN J. & LYNNE C. WEILAND
 56.655 Ac.

AGRICULTURAL

NW 1/4 SECTION 9, T. 10 S., R. 9 E.,
 JERUSALEM TWP.

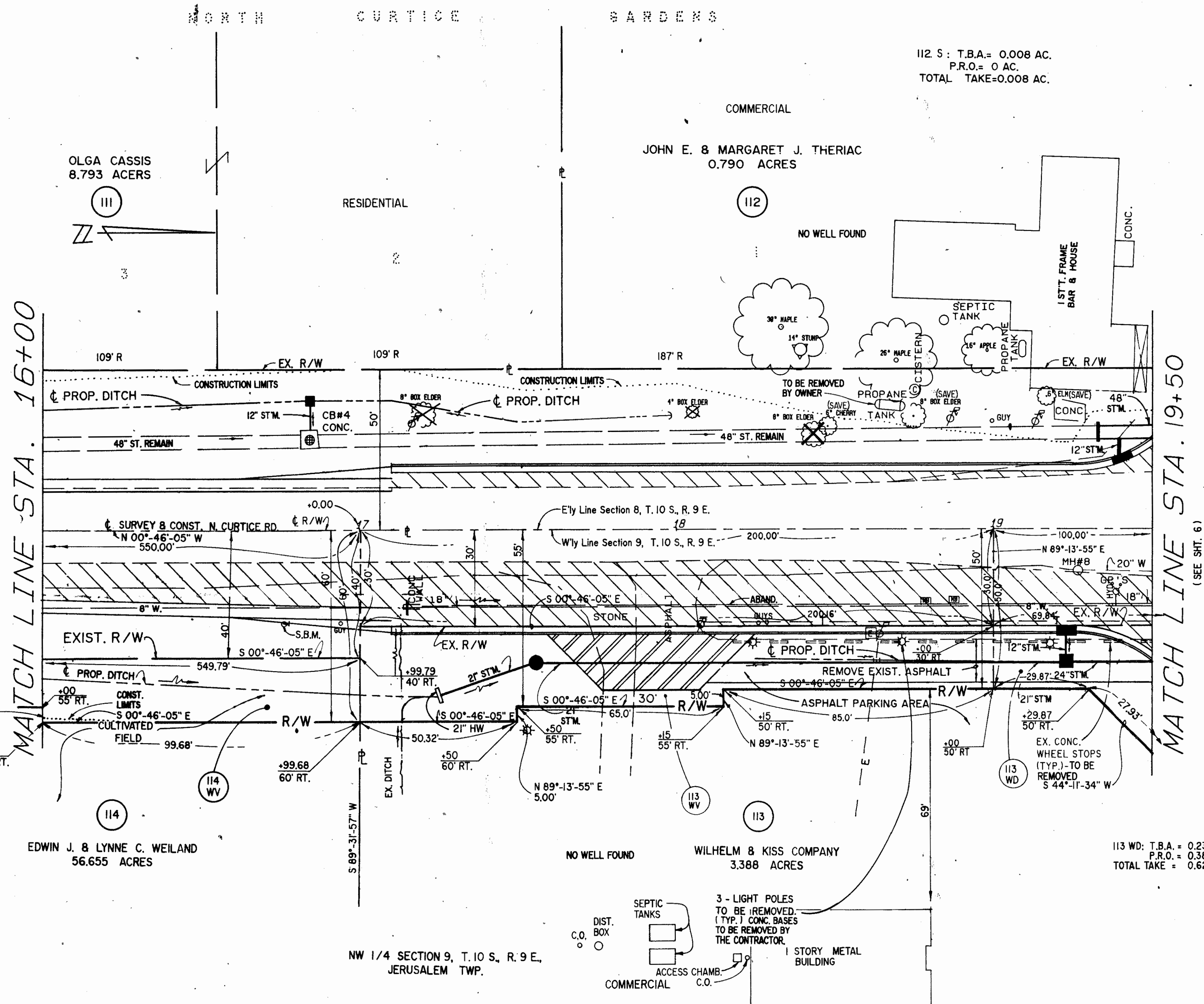
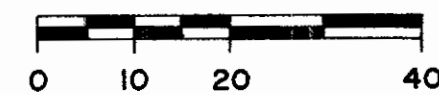
REV'D.		DATE	DESCRIPTION	CALCULATED

PROUDFOOT ASSOCIATES
 ENGINEERS SURVEYORS PLANNERS
 CHECKED: 10/23
 APPROVED: 10/23

LUC - 2 - 27.50
LUCAS COUNTY

IIIWD: T.B.A.= 0.204 AC.
P.R.O.= 0.295 AC.
TOTAL TAKE= 0.499 AC.

II2 S: T.B.A.= 0.008 AC.
P.R.O.= 0 AC.
TOTAL TAKE=0.008 AC.



II4 W: T.B.A.= 0.172 AC.
P.R.O.= 0.505 AC.
TOTAL TAKE= 0.677 AC.

II3 WD: T.B.A.= 0.239 AC.
P.R.O.= 0.387 AC.
TOTAL TAKE = 0.626 AC.

II3 W: T.B.A.= 0.111 AC.
P.R.O.= 0.138 AC.
TOTAL TAKE = 0.249 AC.

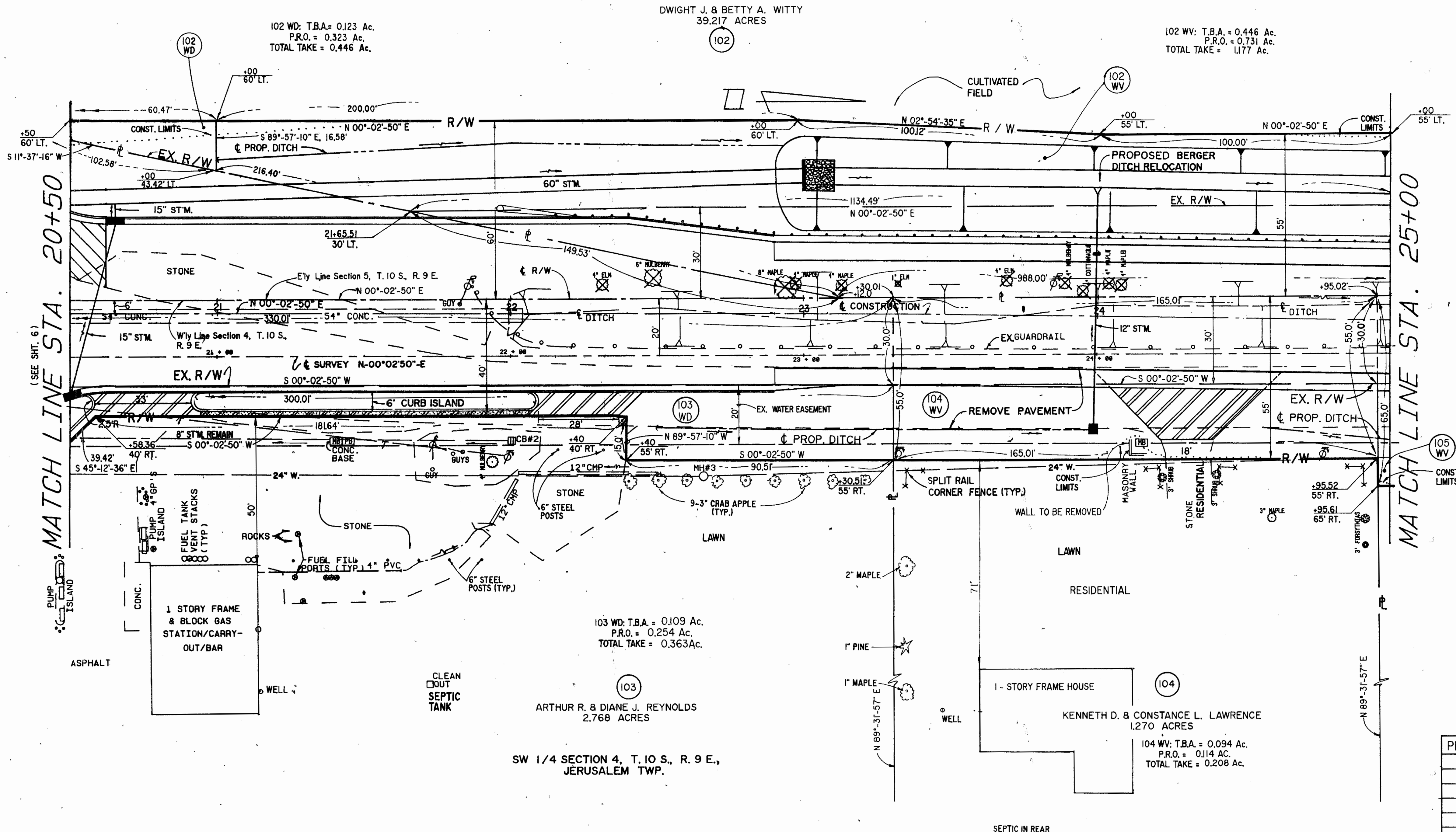
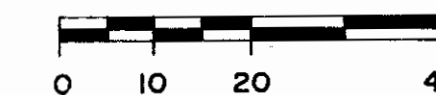
PLAN COMPLETION DATE: 9-28-92

REV'D.	DATE	DESCRIPTION	CALCULATED

PROUDFOOT ASSOCIATES
ENGINEERS SURVEYORS PLANNERS

DRAWN: SW
CHECKED: ORB
APPROVED: ORB

LUC-2-27.50
LUCAS COUNTY
SE 1/4 SECTION 5, T. 10 S., R. 9 E.,
JERUSALEM TWP.



(SEE SHIT. 6)
MATCH LINE STA. 20+50

MATCH LINE STA. 25+00

PLAN COMPLETION DATE: 9-28-92

REV'D.	DATE	DESCRIPTION

PROUDFOOT ASSOCIATES
ENGINEERS SURVEYORS PLANNERS

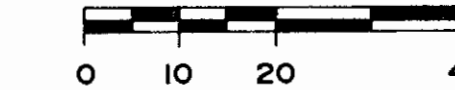
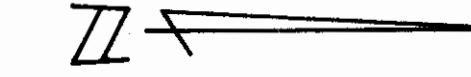
CHECKED	APPROVED
---------	----------

LUC - 2 - 27.50
LUCAS COUNTY

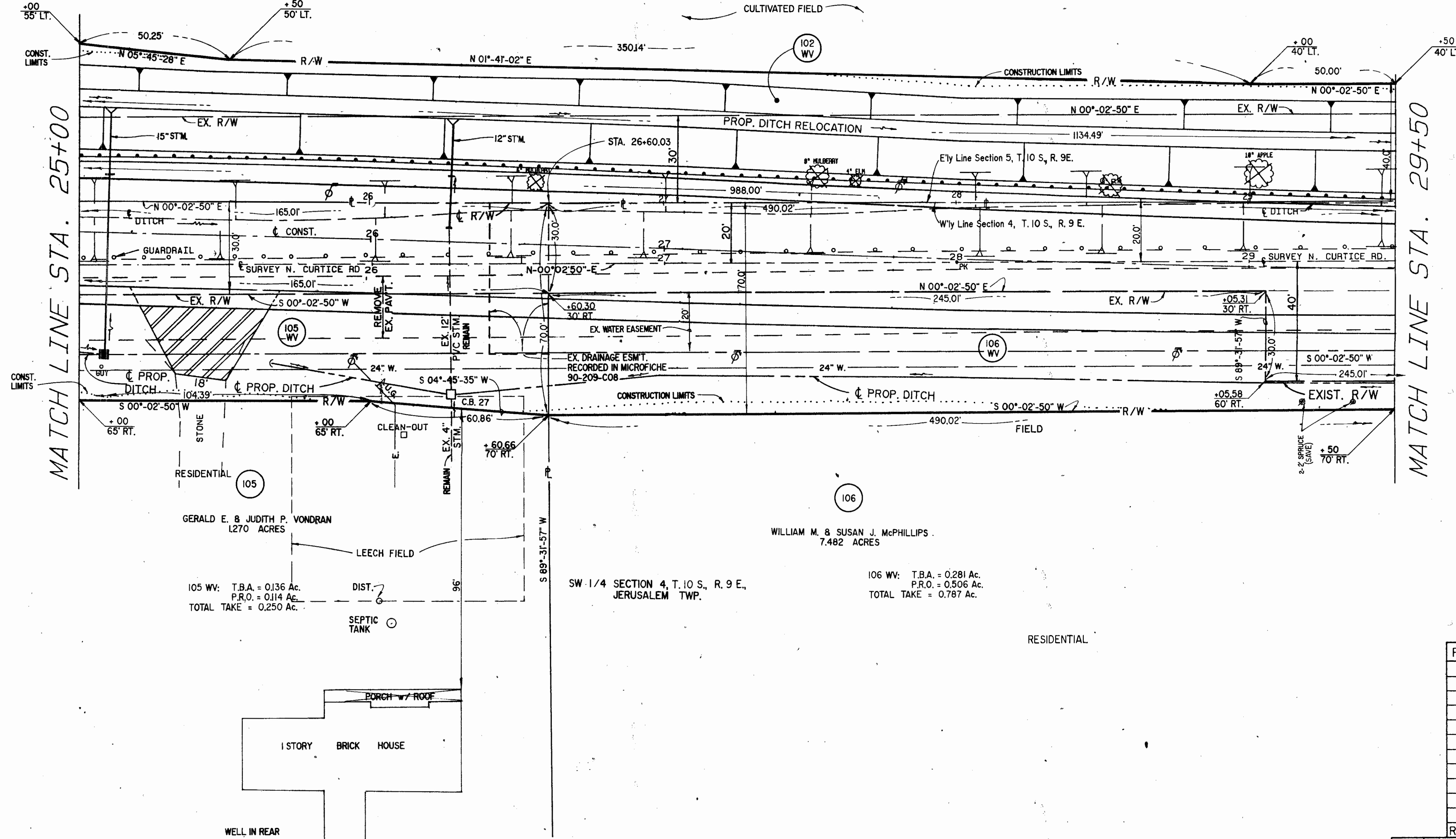
SE 1/4 SECTION 5, T.10 S., R.9 E.,
JERUSALEM TWP.

AGRICULTURAL

DWIGHT J. & BETTY A. WITTY
39.217 ACRES



102 WV: T.B.A. = 0.446 Ac.
P.R.O. = 0.731 Ac.
TOTAL TAKE = 1.177 Ac.



MATCH LINE STA. 25+00

MATCH LINE STA. 29+50

RESIDENTIAL

105 WV: T.B.A. = 0.136 Ac.
P.R.O. = 0.114 Ac.
TOTAL TAKE = 0.250 Ac.

GERALD E. & JUDITH P. VONDRAH
1.270 ACRES

LEECH FIELD

DIST. ?

SEPTIC TANK

WELL IN REAR

1 STORY BRICK HOUSE

PORCH w/ ROOF

SW 1/4 SECTION 4, T.10 S., R.9 E.,
JERUSALEM TWP.

106 WV: T.B.A. = 0.281 Ac.
P.R.O. = 0.506 Ac.
TOTAL TAKE = 0.787 Ac.

WILLIAM M. & SUSAN J. McPHILLIPS
7.482 ACRES

RESIDENTIAL

PLAN COMPLETION DATE: 9-28-92	

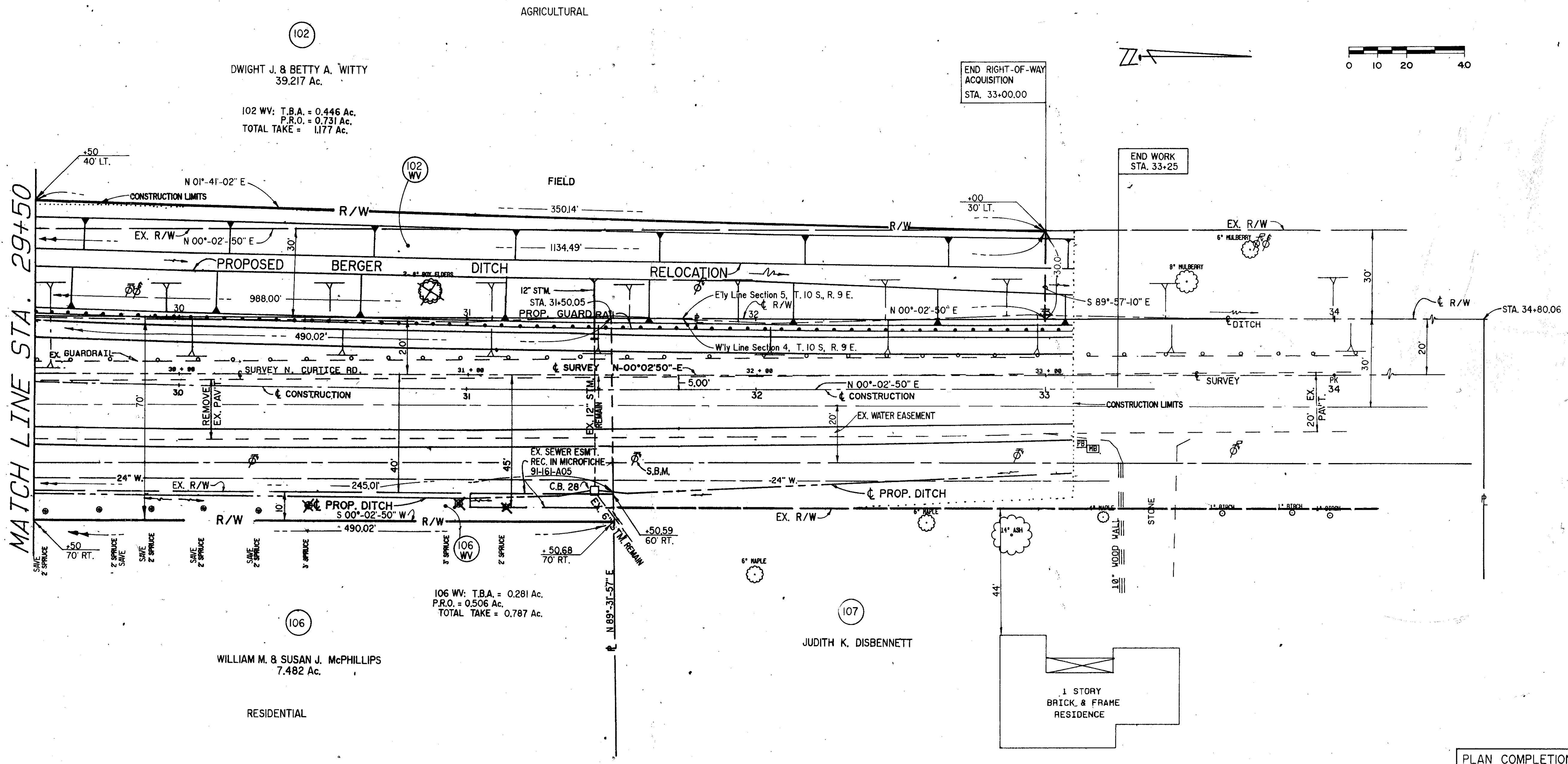
REV'D.	DATE	DESCRIPTION	DRAWN	CHECKED	APPROVED

PROUDFOOT ASSOCIATES
ENGINEERS SURVEYORS PLANNERS

DRAWN: JW
CHECKED: KQB
APPROVED: KQB

SE 1/4 SECTION 5, T.10 S., R.9 E.,
JERUSALEM TWP.

R/W PLANS



MATCH LINE STA. 29+50

102
DWIGHT J. & BETTY A. WITTY
39.217 Ac.
102 W.V. T.B.A. = 0.446 Ac.
P.R.O. = 0.731 Ac.
TOTAL TAKE = 1.177 Ac.

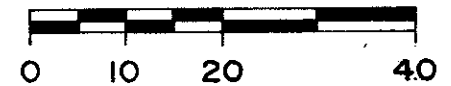
106
WILLIAM M. & SUSAN J. McPHILLIPS
7.482 Ac.
106 W.V. T.B.A. = 0.281 Ac.
P.R.O. = 0.506 Ac.
TOTAL TAKE = 0.787 Ac.

107
JUDITH K. DISBENNETT

SW 1/4 SECTION 4, T.10 S., R.9 E.,
JERUSALEM TWP.

END RIGHT-OF-WAY ACQUISITION
STA. 33+00.00

END WORK
STA. 33+25



PLAN COMPLETION DATE: 9-28-92

REV'D.	DATE	DESCRIPTION	CALCULATED
--------	------	-------------	------------

PROUDFOOT ASSOCIATES
ENGINEERS SURVEYORS PLANNERS

DRAWN: *[Signature]*
CHECKED: *[Signature]*
APPROVED: *[Signature]*

LUCAS - 9-21-92
63 562
D-7
1994