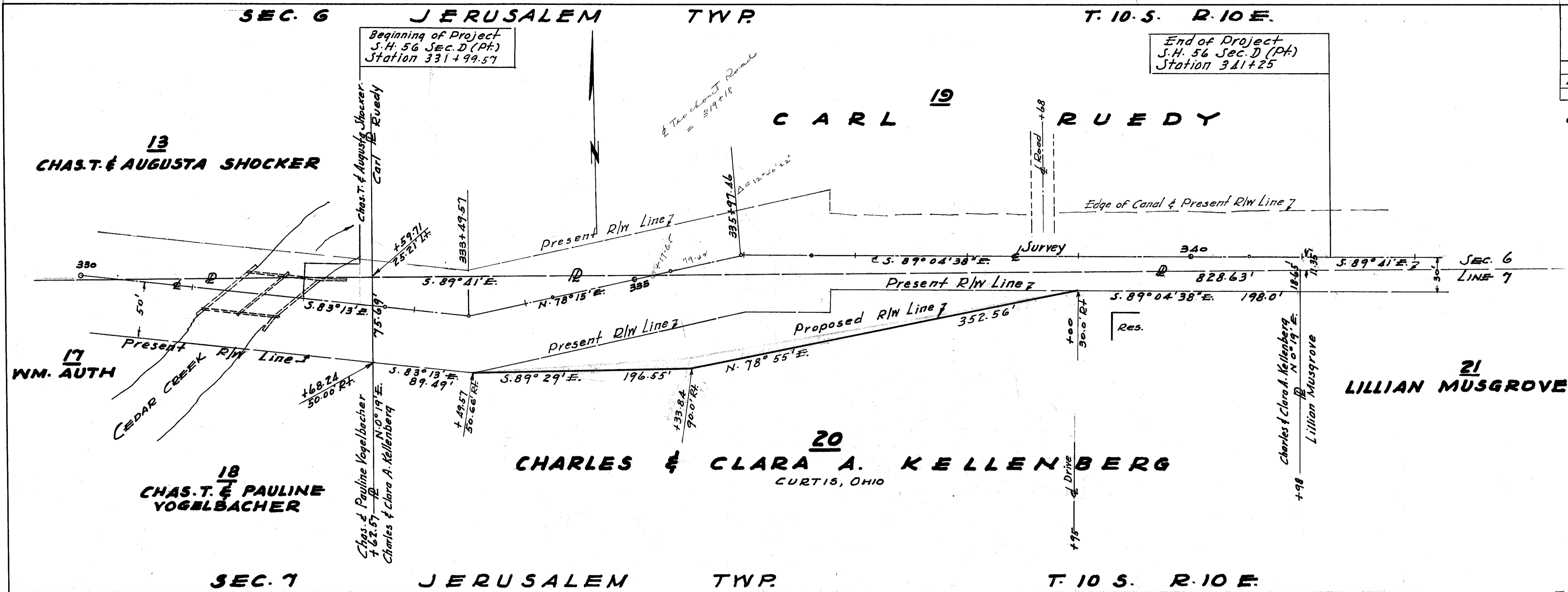


Scanned June 1997

**LUCAS COUNTY**  
**S.H. 56 SEC. D (PT.)**  
**R/W PLANS**

DATE 5/21/11	DRAWN BY J.W.S.
REVISED 6/6/11	
LENGTH OF PROJECT	
LUC - 2 - 25.55 - 31.85	



R-30028 #12 C-25