

4 LANE

MAINTENANCE PROGRAM 1981

PART OF 1

(TOP) TYPE 404 THICKNESS 1 1/2" PRIORITY

(BASE) TYPE THICKNESS PENETRATION

END LOG S.L.M. 7.93 (Construction Joint (418+70.40 Calc.))

BEGIN LOG S.L.M. 5.17 (Construction Joint - W of Eber Rd. (272+89.00 Meas.))

TOTAL LENGTH 2.76

COUNTY LUCAS SECTION 5.17 WIDTH (2@24) 50' meas. BERM CURBED (✓) ( )

ROUTE SR 2 SECTION 5.46 WIDTH (50) ( ) ( )

SECTION 7.93 WIDTH ( ) ( ) ( )

ORDINANCE SECTION WIDTH ( ) ( ) ( )

END LOG SECTION WIDTH ( ) ( ) ( )

BEGIN LOG SECTION WIDTH ( ) ( ) ( )

EXISTING BERM TYPE Stab. EXISTING BERM WIDTH 8' ? MAILBOX APPROACHES No. None

(PAVED, STABILIZED, AGGREGATE)

MANHOLES 1

PROPOSED BERM TYPE PROPOSED BERM WIDTH X INLETS CATCH BASINS

INTERSECTIONS 9 ASPHALT DRIVEWAYS 15 CONCRETE DRIVEWAYS

STRUCTURES

RAILROAD CROSSINGS

Table with 4 columns: STRUCTURE NO., WIDTH, LENGTH, APPR. SLABS. Row 1: None

Table with 4 columns: NAME R. R., STATION, (\* ) (No.), TRACKS. Row 1: None

\*Indicate length of crossing along E Pav't.

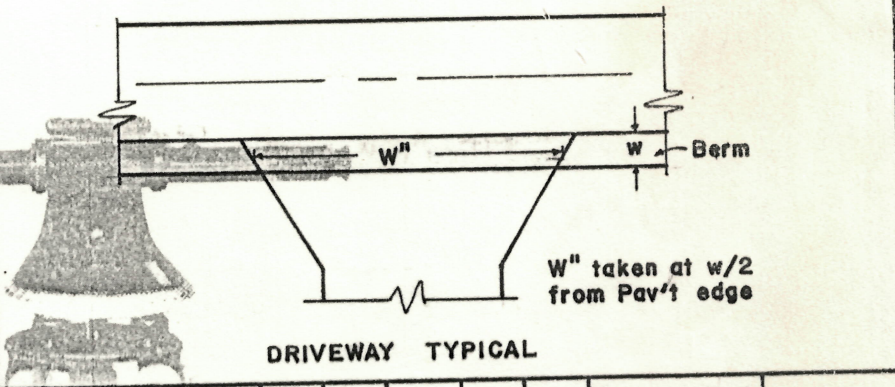
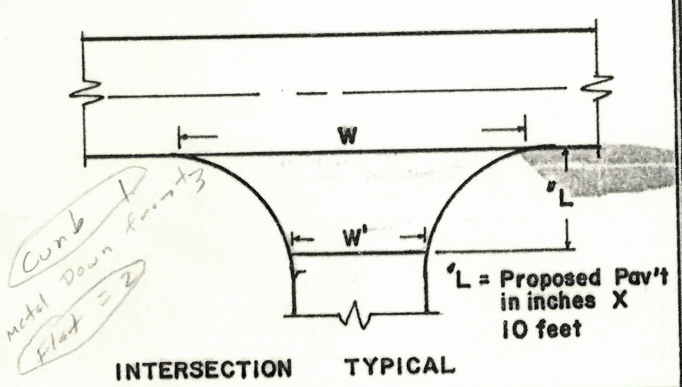
NOTES

2' curb & gutter begins 378+06 - Both sides

NOTE: Sta. Equation at 387+04.42 bk. = 387+45 Abd. (deduct 40.39)

this changes Sta. at Alben Rd. from Plan 417+77.23 to Meas. 417+36.6 which moves End Sta. further east at 418+70.40

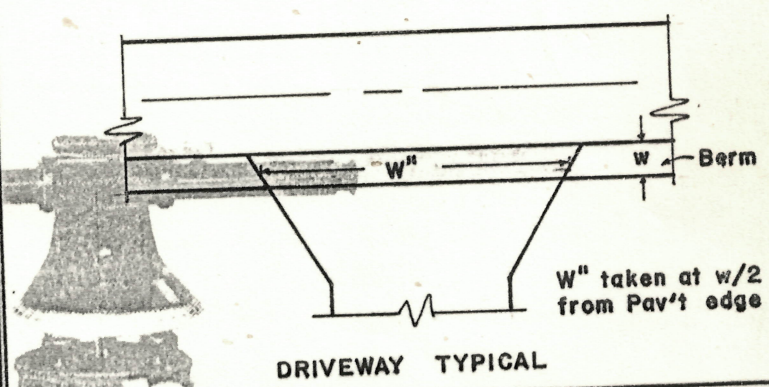
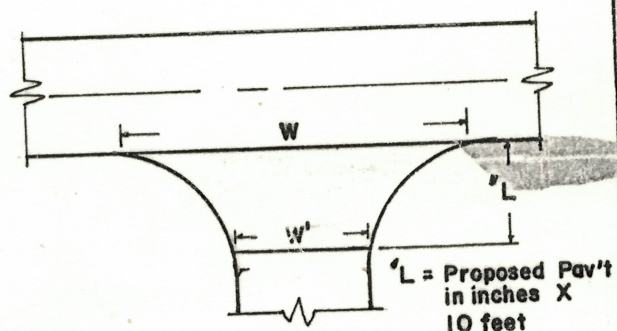
PERSONNEL \_\_\_\_\_ TITLE \_\_\_\_\_ PERSONNEL \_\_\_\_\_ TITLE \_\_\_\_\_ COUNTY Lucas DATE 26 Jan. 81  
Stone \_\_\_\_\_ \_\_\_\_\_ \_\_\_\_\_ \_\_\_\_\_ S. R. #2 WEATHER Cloudy  
Crew \_\_\_\_\_ \_\_\_\_\_ \_\_\_\_\_ \_\_\_\_\_ SEC. 5.17-7.93 TEMP. 40°  
 DESCRIPTION \_\_\_\_\_ LEFT \_\_\_\_\_ CENTER LINE \_\_\_\_\_ RIGHT \_\_\_\_\_ JOB NO. 026112



STATION	RT. LT.	L	W	W'	Asph	Conc		STATION	RT. LT.	w	W''	Asph	Conc	Aggr	Dropped Curb Feather NOT Req'd
279+01	RT	15'	135	84	✓		Edin	272+80	RT	8'	40	✓			
284+51	Lt	15	122	63	✓		Edin	275+50	RT	"	36	✓			
303+22	Lt	15	115	60	✓		Mack	277+00	RT	"	36	✓			
303+22	RT	15	115	60	✓		"	279+85	RT	"	81	✓			
349+66	Lt	15	135	66	✓		Grissig	280+70	RT	"	81	✓			
349+66	RT	15	132	70	✓		"	284+70	RT	8'	34	✓			
377+45	Lt	15	114	46	✓		Old Airport	297+10	Lt	8	38	✓			
417+77	Lt	15	132	70	✓		Alben	307+25	RT	8'	38	✓			
417+77	RT	15	132	70	✓		"	321+10	RT	8	45	✓			
								332+50	Lt	8	72	✓			
								362+10	RT	8	48	✓			
								368+51	RT	8	55	✓			
								369+05	Lt	8	60	✓			
								371+40	RT	8	48	✓			
								372+50	RT	8	48	✓			
								379+15	Lt	-	30		✓		
								380+35	RT	-	26		✓		
								380+40	Lt	-	32		✓		
								380+69	RT	-	26		✓		
								381+23	Lt	-	32		✓		
								381+59	RT	-	26		✓		
								381+80	Lt	-	32		✓		
								382+71	Lt	-	32		✓		
								383+82	Lt	-	32		✓		

PERSONNEL Stone TITLE \_\_\_\_\_ PERSONNEL \_\_\_\_\_ TITLE \_\_\_\_\_ COUNTY Lucas DATE 26 Jan. 81  
 \_\_\_\_\_ S. R. # 2 WEATHER Cloudy  
Cow \_\_\_\_\_ SEC. 5.17 - 7.93 TEMP. 40°  
 \_\_\_\_\_ JOB NO. 026112

DESCRIPTION \_\_\_\_\_ LEFT \_\_\_\_\_ CENTER LINE \_\_\_\_\_ RIGHT \_\_\_\_\_



STATION	RT. LT.	L	W	W'	Asph	Conc	STATION	RT. LT.	w	W''	Asph	Conc	Aggr	Dropped Curb Feather NOT Req'd
							385+11	RT.	-	26		✓		
							386+55	LT.	-	44		✓		
							387+19	LT.	-	44		✓		
							386+90	RT.	-	30		✓		
							388+17	RT.	-	28		✓		
							388+55	LT.	-	44		✓		
							391+92	RT.	-	28		✓		
							391+96	LT.	-	28		✓		
							392+49	LT.	-	30		✓		
							392+61	RT.	-	26		✓		
							393+95	LT.	-	28		✓		
							394+35	RT.	-	28		✓		
							396+17	RT.	-	26		✓		
							397+02	LT.	-	26		✓		
							399+97	RT.	-	28		✓		
							400+02	LT.	-	46		✓		
							400+95	RT.	-	28		✓		
							401+19	LT.	-	48		✓		
							403+25	LT.	-	28		✓		
							404+27	LT.	-	30		✓		
							405+26	LT.	-	30		✓		
							406+72	LT.	-	30		✓		
							408+45	LT.	-	36		✓		
							409+74	LT.	-	48		✓		



PERSONNEL TITLE PERSONNEL TITLE COUNTY Lucas DATE 26 Jan. 81  
 PERSONNEL Stons TITLE \_\_\_\_\_ COUNTY \_\_\_\_\_ DATE \_\_\_\_\_  
 PERSONNEL Crow TITLE \_\_\_\_\_ COUNTY \_\_\_\_\_ DATE \_\_\_\_\_  
 S. R. #2 WEATHER Cloudy  
 SEC. 5.17 - 7.93 TEMP. 40°  
 JOB NO. 026112

DESCRIPTION LEFT CENTER LINE RIGHT

STATION	OUT Rt-Lt	CB	TYPE 1,2,3	MH	TYPE San. Storm	MONU	TYPE Box Other	WV	CASTING		Remarks
									Raise	Feather	
279+01	±					✓			✓		Ebar Rd. 1st.
282+42	37' Lt				✓ Storm				✓		15' Beam N. EP.
284+50.94	±					✓			✓		T.S.
295+67.61	±					✓			✓		S.T.
307+38.99	±					✓			✓		T.S.
311+13.38	10.7' Rt.					✓			✓		P.I.
314+86.77	±					✓			✓		S.T.
341+62.05	±					✓			✓		T.S.
345+19.32	9' Rt.					✓			✓		P.I.
348+75.75	±					✓			✓		S.T.
374+18.86	±					✓			✓		T.S.
381+05	Rt	✓	1								
383+56	Rt	✓	1								
387+04	±					✓			✓		
387+11	Rt.	✓	1								
390+82	Rt	✓	1								
392+35	Rt	✓	1								
392+35	Lt	✓	2								
398+40	Lt	✓	1								
398+40	Rt	✓	1								
401+59	Lt	✓	1								
401+59	Rt	✓	1								
403+92.2	±					✓			✓		
403+94	Lt	✓	1								
403+94	Rt	✓	1								
407+85	Lt	✓	1								
407+85	Rt	✓	1								
415+35	Lt	✓	1								
415+35	Rt	✓	1								
417+03	Lt	✓	1								
417+06	37' Lt				✓ Storm		✓		✓		
417+36.6	±						✓				