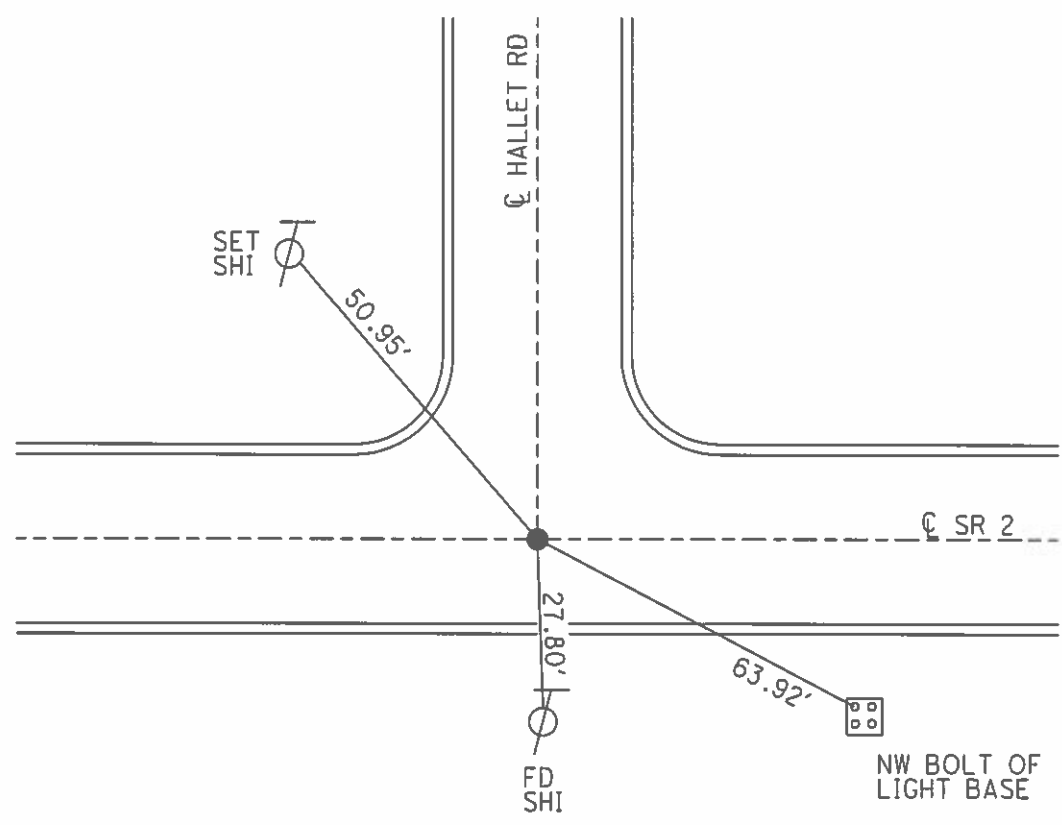
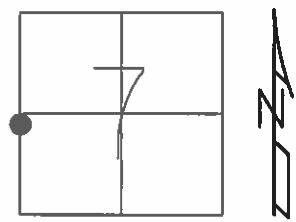


O.D.O.T. DISTRICT 2 SURVEY OFFICE (USE ONLY)

PERSONNEL _____ REFERENCE NO. 1 SHEET 1 OF 11
 NOTES HOMAN _____ DATE 6/15/03 _____ ROUTE SR 2
 H.C. HOMAN _____ WEATHER FAIR _____ COUNTY LUCAS
 R.C. RYALL _____ TEMP. 75° _____ TOWNSHIP SWANTON
 _____ SECTION 7
 _____ T 7 N R 5 E

TYPE MONUMENT BRASS CAP MON.
~~ON SURFACE~~ - BELOW 2"
 LEFT - ☉ PAV'T - RIGHT ON
22.1' TO S EDGE PAVEMENT
 S.L.M. 0+00
 GRID: NORTHING: _____ EASTING: _____



O.D.O.T. DISTRICT 2 SURVEY OFFICE

PERSONNEL _____

REFERENCE NO. 1

SHEET 1 OF 11

NOTES Homan

H.C. Homan

R.C. Ryall

DATE 6-15-03

WEATHER Fair

TEMP. 75°

US 20A

ROUTE SR 2

COUNTY LUCAS

TOWNSHIP SWANTON

SECTION 7

T7 NR 44E
5

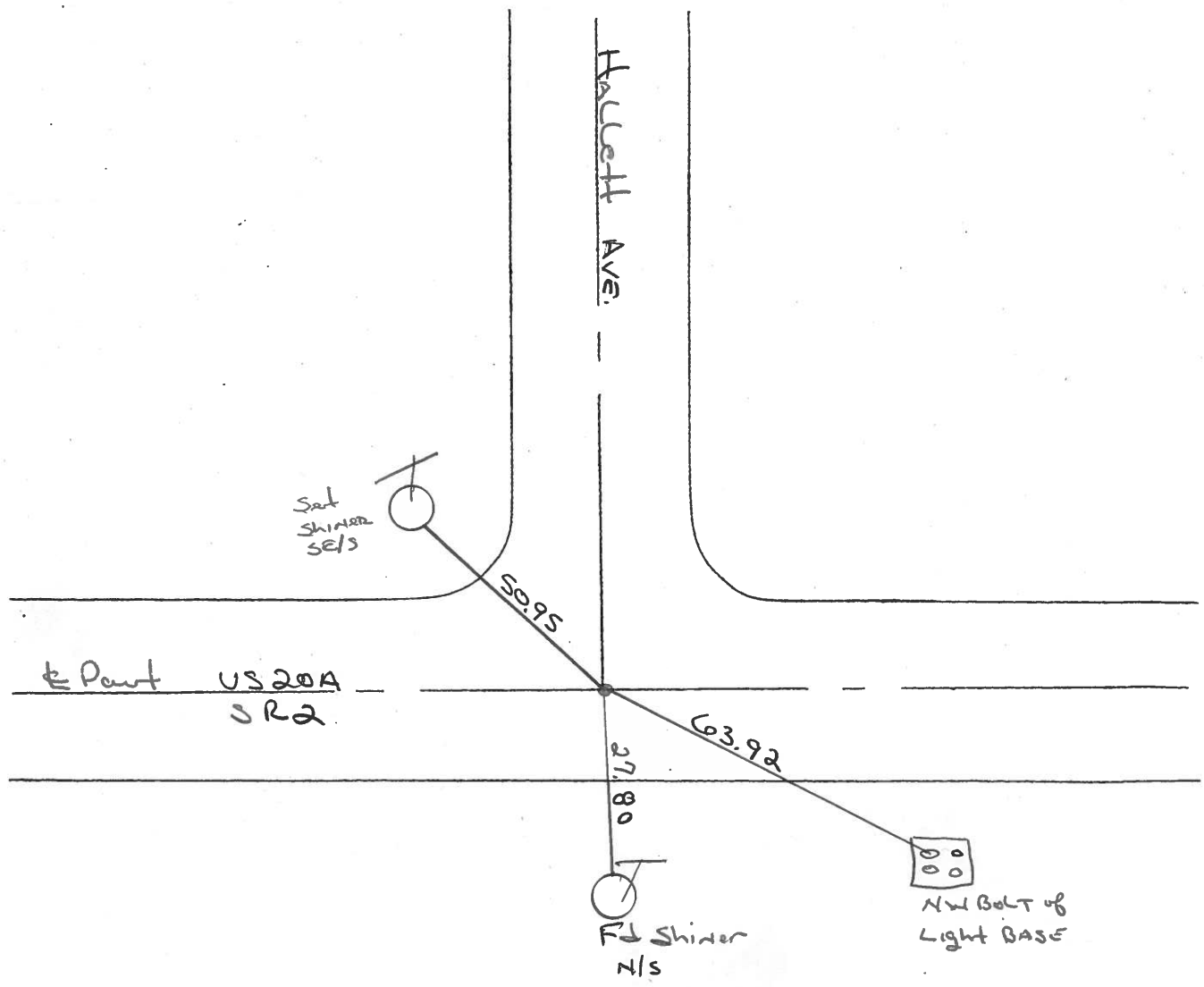
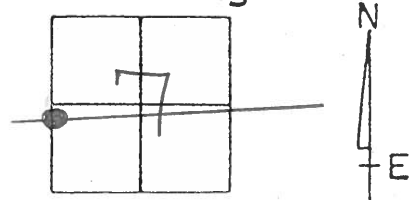
TYPE MONUMENT BRASS CAP MON.

ON ~~SURFACE~~ - BELOW 2"

~~LEFT- & PAV'T. - RIGHT~~ yes

22.1 TO S. EDGE PAVEMENT

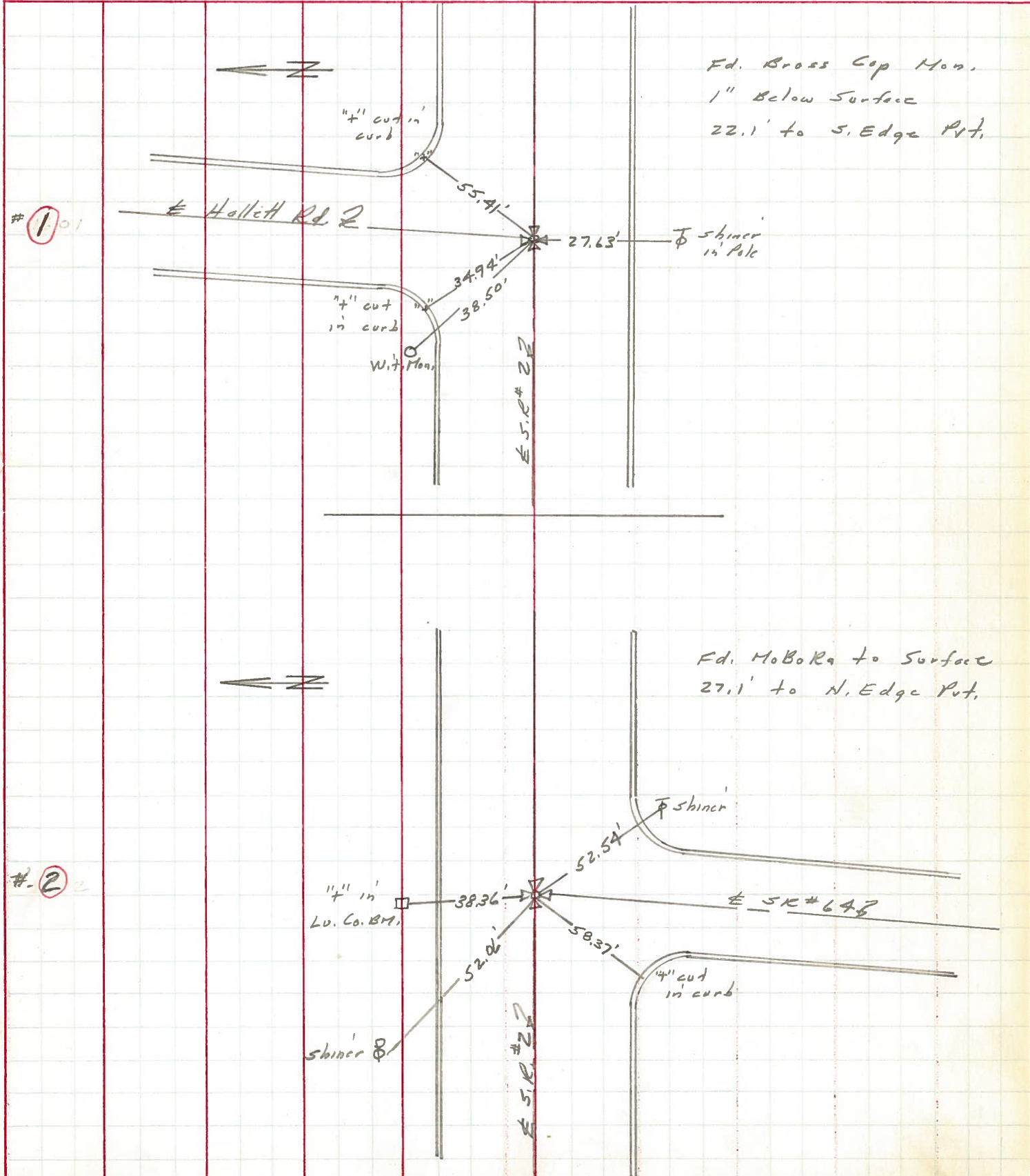
S.L.M. 0 +00



PERSONNEL	TITLE	PERSONNEL	TITLE
Stone		Miller	
Michalak		Bridley	
Schroder			
Farr			

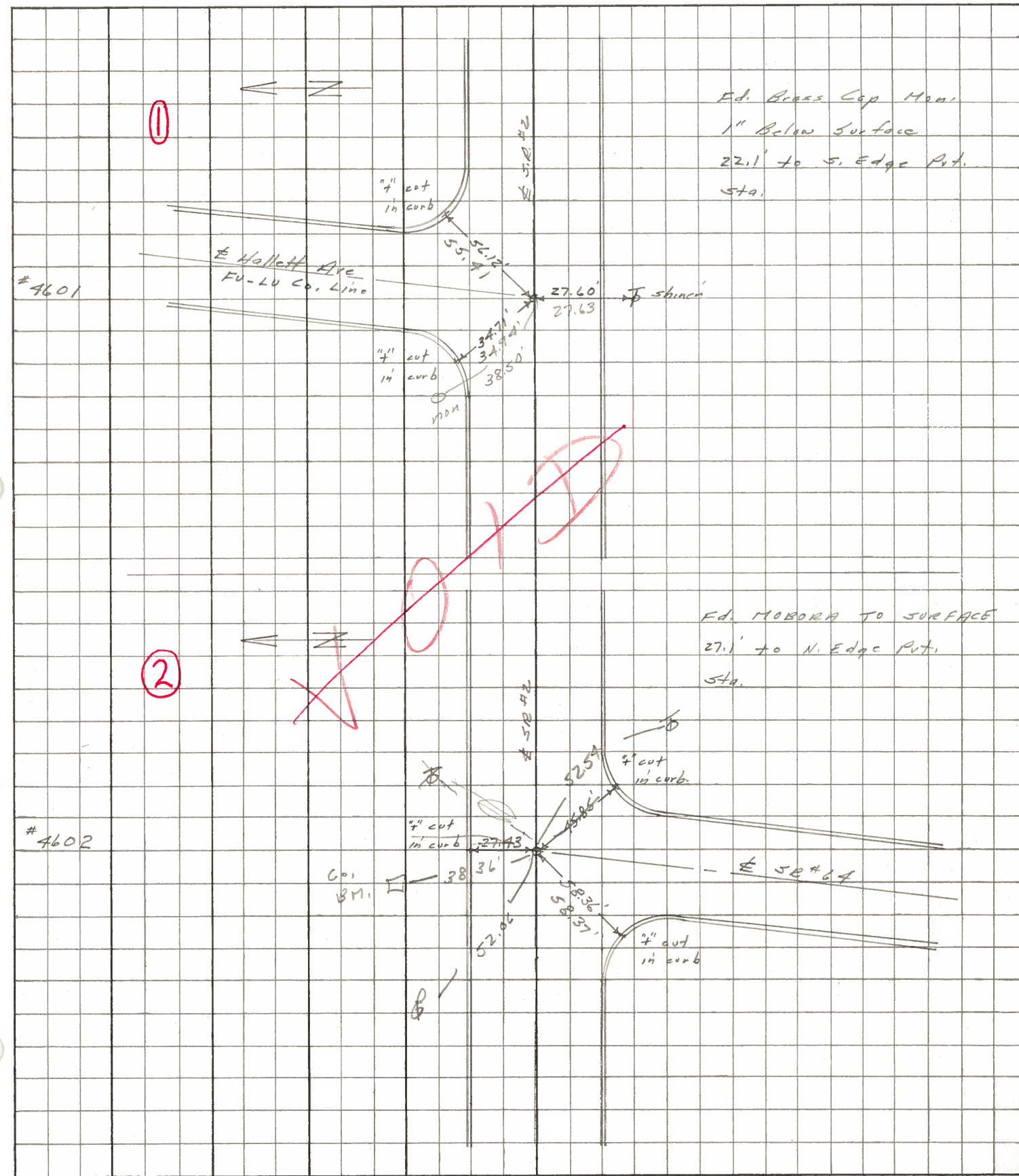
COUNTY Lucas DATE 3 June 71
 S. R. #2 WEATHER Fair
 SEC. Fulton Co. Line East TEMP. 65°

DESCRIPTION References to Control Points JOB NO. _____
 LEFT CENTER LINE RIGHT



PERSONNEL	TITLE	PERSONNEL	TITLE	COUNTY	DATE
Stone	Notes			Lucas	11 July 68
Michalak	Tape			S. R. #2	WEATHER Fair
Schrader	Tape			SEC. Chi. Pike	TEMP. 70°

DESCRIPTION References to Control Points JOB NO. _____
 LEFT CENTER LINE RIGHT



PERSONNEL TITLE PERSONNEL TITLE

COUNTY Lucas

DATE 3-20-53

S. R. #2

WEATHER

SEC. G, H-2, H-1, H-3, I, J, K-1 TEMP.

DESCRIPTION

Toledo - Wauseon Rd.

JOB NO.

LEFT

CENTER LINE

RIGHT

Sta. 0+00				N.E. to ^{Perm. Stone} corner of bldg.	94.42 54.35
Fulton-Lucas Rd.				N.W. to witness mon.	38.51
Brass Screw				S. to shiner in T.P.	27.87
				S. to shiner in T.P. (gone)	68.38
		#112	(1)		
Sta. 25+46.70				N.W. to witness mon.	42.28
Route 64				N.E. to shiner in 1st post.	50.94
Brass screw				S.E. to shiner in T.P.	37.56
				S.W. to witness mon.	45.16
		#113	(2)		
				N. to witness mon. (bumped)	27.36
				S.E. to N.W. cor. block building	70.59
Sta. 51+96.27				N.W. to shiner in ^{New} P.P.	38.10 37.09
Scott Rd.				N.E. to shiner in 15" Hickory	55.77
Brass screw				S.S.W. to shiner in 18" maple	22.66
				S.E. to shiner in 40" maple	27.36
		#114	(3)		
				S. To Mon.	19.08'
Sta. 78+35.15				S.E. "4" in pump isle W. end	67.50'
Girdham Rd.				N.W. to witness mon.	29.21'
Brass screw mon.				S.W. to R.R. spk or shiner in P.P. 4352'	
				N.E. to block fdn. S.W. cor. bldg.	54.69
		#115	(4)		
				S.W. To witness Mon.	44.31