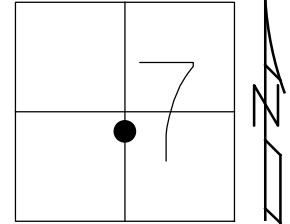


O.D.O.T. DISTRICT 2 SURVEY OFFICE (USE ONLY)

PERSONNEL _____ REFERENCE NO. 2 SHEET 2 OF 31
 NOTES BALBAUGH DATE 5/11/20 ROUTE SR 2
 H.C. LEU WEATHER CLOUDY COUNTY LUCAS
 R.C. AUBLE TEMP. 39° TOWNSHIP SWANTON
 DWG BY GARRETT PID 107059 SECTION 7
 T 7 N R 5 E

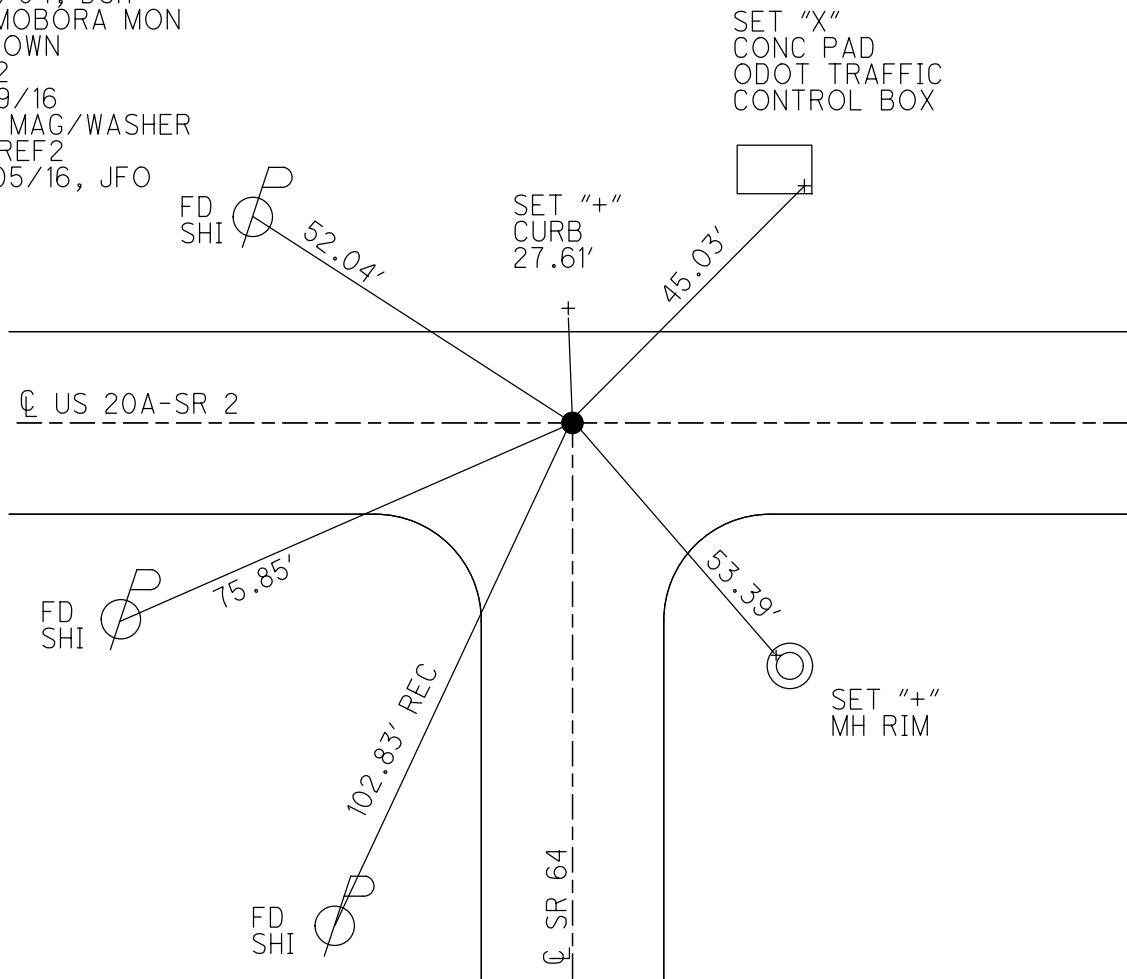
TYPE MONUMENT MAG/WASHER
 ON SURFACE - ~~BELOW~~ ON
 OFFSET \odot PAVEMENT ON LT : RT
- TO - EDGE PAVEMENT
 STATION: 25+56



HORZ. DATUM: NAD83(2011) GEOID: 2012A
 GRID: NORTHING: 700674.256 EASTING: 1592809.771

RECORD:
 FD MOBORA MON.
 6/15/03 DCH
 SET MAG/WASHER
 1/13/04, DCH
 FD MOBORA MON
 2" DOWN
 REF2
 7/29/16
 SET MAG/WASHER
 NEWREF2
 10/05/16, JFO

NOTE:
 SR 64 REF57

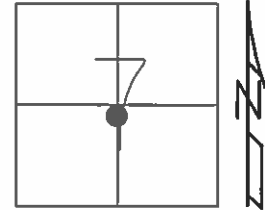


O.D.O.T. DISTRICT 2 SURVEY OFFICE (USE ONLY)

PERSONNEL _____ REFERENCE NO. 2 SHEET 2 OF 11
NOTES HOMAN DATE 7-29-16 ROUTE SR 2
H.C. HOMAN WEATHER CLOUDY COUNTY LUCAS
R.C. RYALL TEMP. 75°F TOWNSHIP SWANTON
SECTION 7
T 7 N R 5 E

TYPE MONUMENT MOBORA MON
~~ON SURFACE~~ - BELOW 2"
LEFT - ☉ PAV'T - RIGHT ON
27.1' TO LT EDGE PAVEMENT
S.L.M. 25+56

Grid: Northing: 700674.2558 Easting: 1592809.771

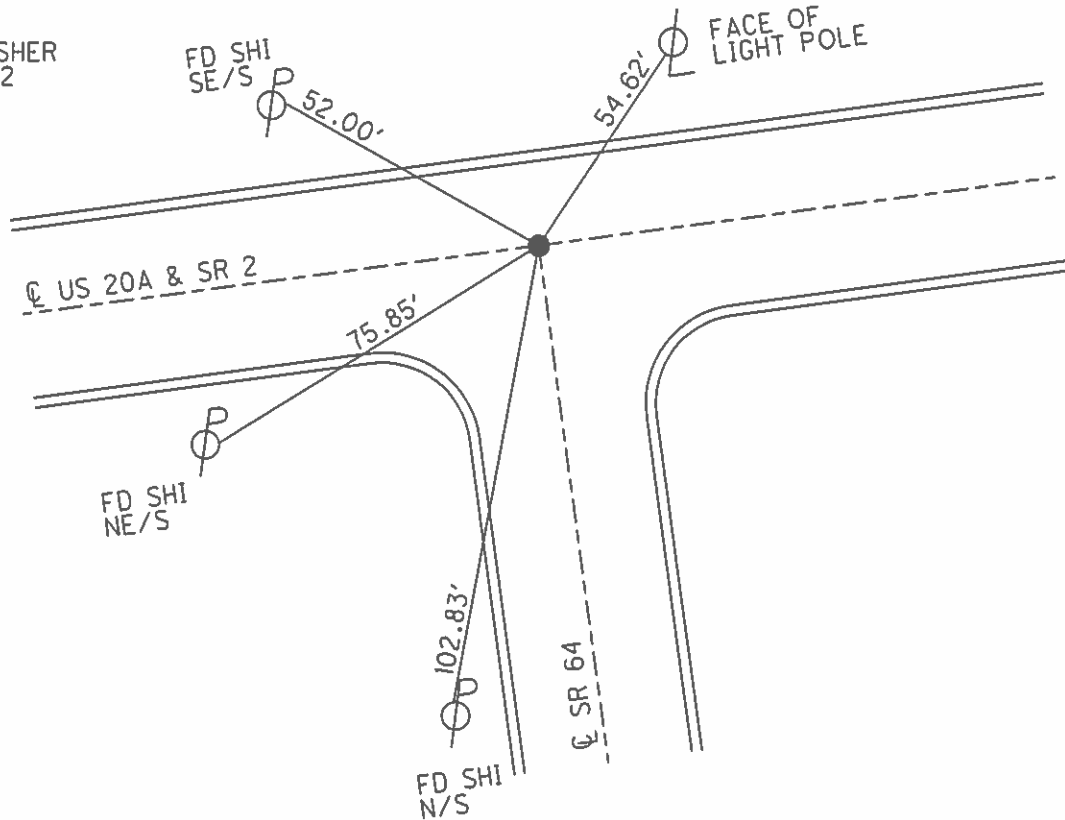


RECORD:
FD. MOBORA MON.
6-15-03 DCH

SET MAG/WASH
1-13-04 DCH

FD MOBORA MON
2" DOWN
GPS, REF2
7-29-16

SET MAG/WASHER
GPS, NEWREF2
10-05-16



O.D.O.T. DISTRICT 2 SURVEY OFFICE

PERSONNEL _____

REFERENCE NO. 2

SHEET 2 OF 11

NOTES Homan

H.C. Homan

R.C. Ryall

DATE 6-15-03

WEATHER Rain

TEMP. 75°

US20A

ROUTE SR2

COUNTY LUCAS

TOWNSHIP SWANTON

SECTION 7

T 7 N R 5 E

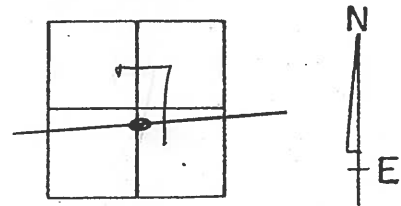
TYPE MONUMENT MOBORA MON.

ON SURFACE - BELOW yes

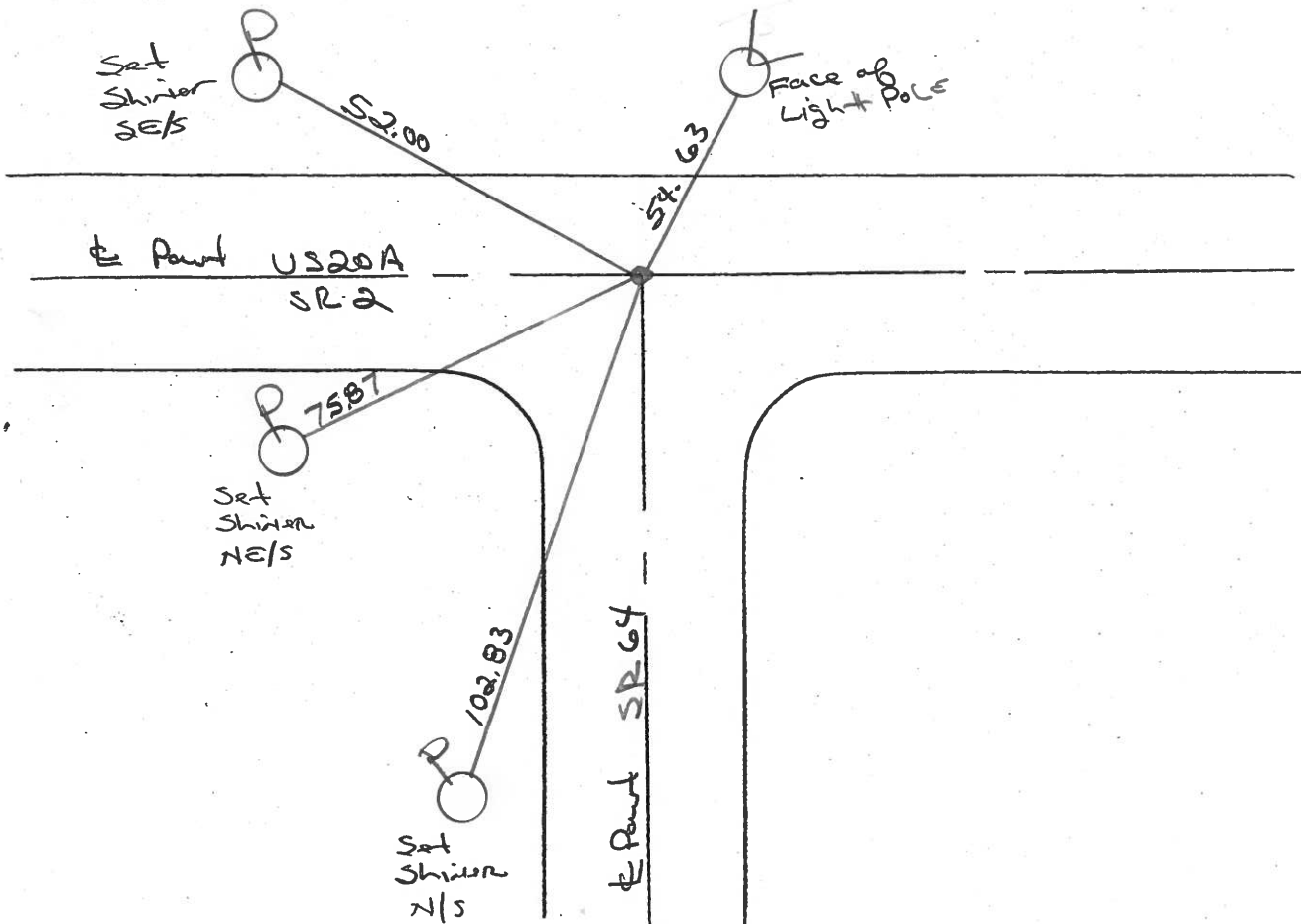
~~LEFT~~ - ~~E~~ PAV'T. - ~~RIGHT~~ yes

27.1 TO N EDGE PAVEMENT

S.L.M. 25 + 56

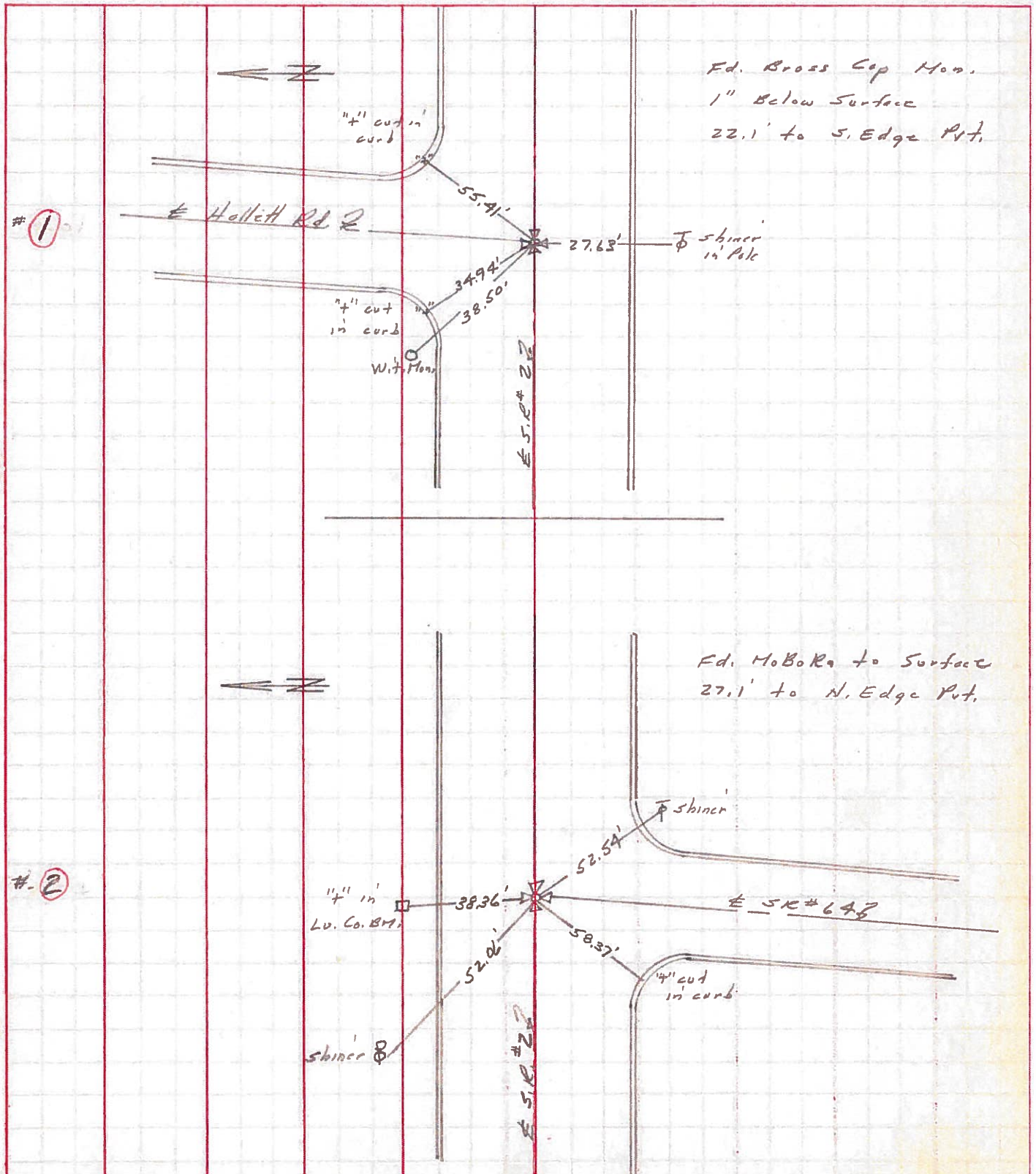


Set mag nail / washer
1-13-04 DCH



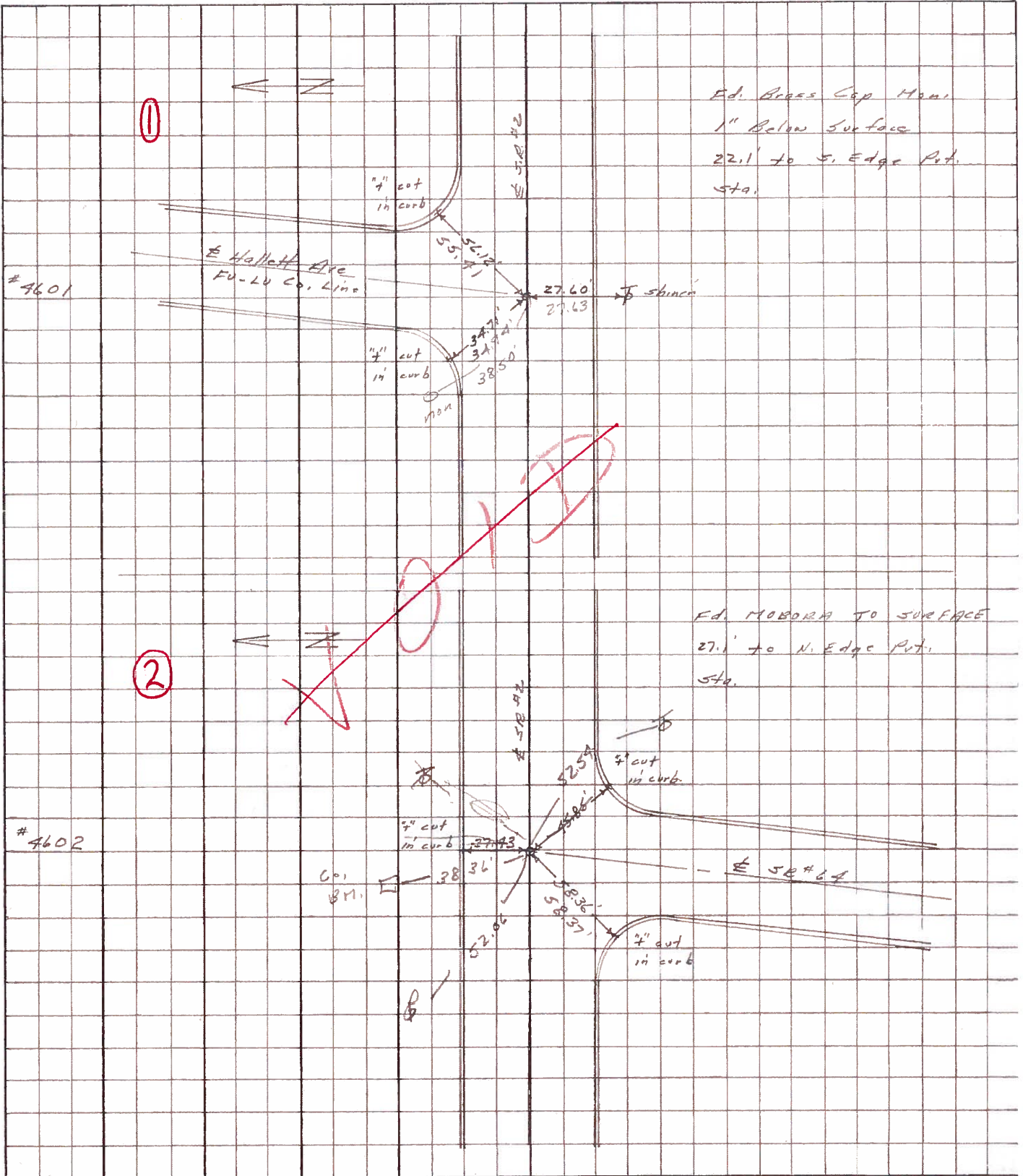
PERSONNEL	TITLE	PERSONNEL	TITLE	COUNTY	DATE	WEATHER	TEMP.
Stone		Miller		Lucas	3 June 71	Fair	65°
Michalak		Brindley		#2			
Schroder				SEC. Fulton Co. Line East			
Farr							

DESCRIPTION References to Control Points JOB NO. _____



PERSONNEL	TITLE	PERSONNEL	TITLE	COUNTY	DATE
Stone	Notes			Locas	11 July 68
Michalak	Tape			S. R. #2	WEATHER Fair
Schrader	Tape			SEC. Chi. Pike	TEMP. 70°

DESCRIPTION References to Central Points LEFT CENTER LINE RIGHT JOB NO. _____



PERSONNEL TITLE PERSONNEL TITLE

COUNTY Lucas

DATE 3-20-53

S. R. #2

WEATHER

SEC. 6, H-2, H-1, H-3, I, J, K-1

TEMP.

DESCRIPTION Toledo - Wauseon Rd

JOB NO.

LEFT

CENTER LINE

RIGHT

LEFT	CENTER LINE	RIGHT
Sta. 0+00 Fulton-Lucas Rd Brass Screw		Perm. stone N.E. to corner of bldg. 94.4' 54.35' N.W. to witness man. 38.51' S. to shiner in T.P. 27.87' S. to shiner in T.P. (gone) 68.38'
	#112 ①	
Sta. 25+46.70 Route 64 Brass screw		N.W. to witness man. 42.28' N.E. to shiner in 1st post. 50.94' S.E. to shiner in T.P. 37.36' S.W. to witness man. 45.16' N. to witness man. (bumped) 27.36' S.E. to N.W. cor. block building 70.59'
	#113 ②	
Sta. 51+96.27 Scott Rd. Brass screw		N.W. to shiner in ^{N.W.} P.P. 38.10' 37.09' N.E. to shiner in 15" Hickory 55.77' S.S.W. to shiner in 18" maple 22.66' S.E. to shiner in 40" maple 27.36' S. To Mon. 19.08'
	#114 ③	
Sta. 78+35.15 Girdham Rd. Brass screw man.		S.E. 4" in pump like W. end 67.50' N.W. to witness man. 29.21' S.W. to R.P. spot or shiner in P.P. 43.52' N.E. to block fdn. S.W. cor. bldg. 54.69' S.W. To Witness Mon. 44.31'
	#115 ④	