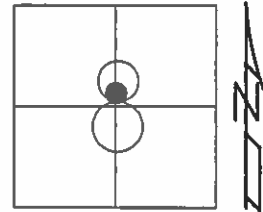


O.D.O.T. DISTRICT 2 SURVEY OFFICE (USE ONLY)

PERSONNEL \_\_\_\_\_ REFERENCE NO. 4 SHEET 4 OF 11  
 NOTES HOMAN DATE 7-29-16 ROUTE SR 2  
 H.C. HOMAN WEATHER CLOUDY COUNTY LUCAS  
 R.C. RYALL TEMP. 75°F TOWNSHIP SWANTON  
 \_\_\_\_\_ SECTION 8  
 \_\_\_\_\_ T 7 N R 5 E

TYPE MONUMENT MOBORA MON  
~~ON SURFACE~~ - BELOW 3"  
 LEFT - ☉ PAV'T - ~~RIGHT~~ 1.0'  
27' TO LT EDGE PAVEMENT  
 S.L.M. 78+70



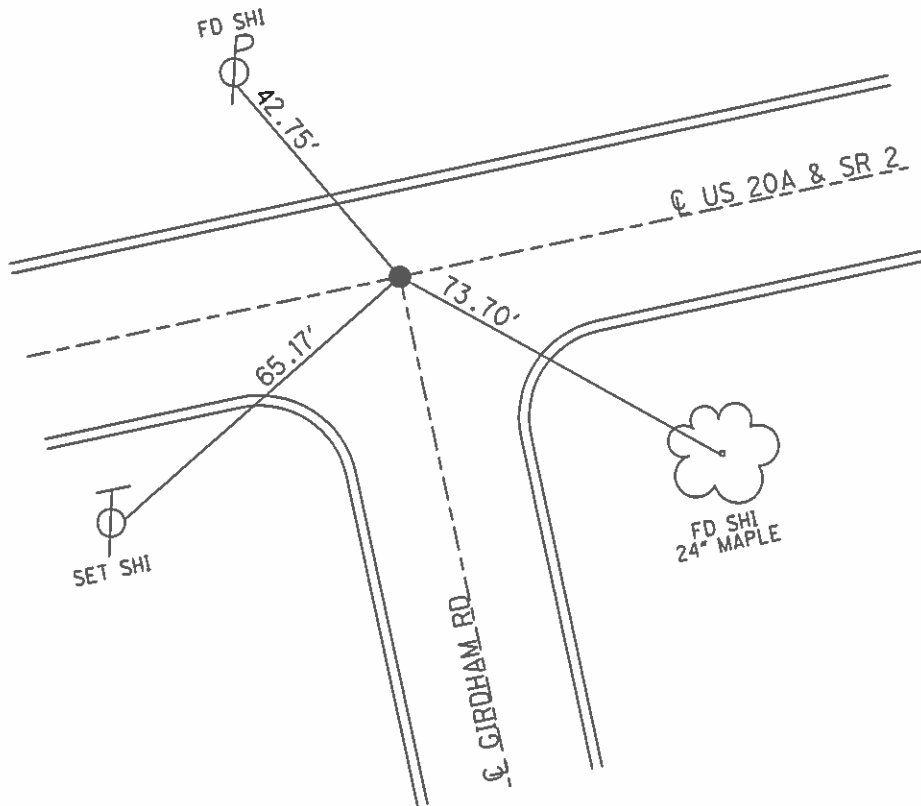
Grid: Northing: 701091.3889 Easting: 1598079.533

RECORD:  
 FD. MOBORA MON.  
 6-15-03 DCH

SET MAG/WASH  
 1-13-04 DCH

FD MOBORA MON  
 3" DOWN  
 GPS, REF 4  
 7-29-16

SET MAG/WASHER  
 GPS, NEWREF 4  
 10-05-16



O.D.O.T. DISTRICT 2 SURVEY OFFICE

PERSONNEL

REFERENCE NO. 4

SHEET 4 OF 11

NOTES Homan

H.C. Homan

R.C. Ryall

DATE 6-15-03

WEATHER Fair

TEMP. 75°

ROUTE US 20A  
SR2

COUNTY DEAS

TOWNSHIP Swanton

SECTION 8

T 7 N R 5 E

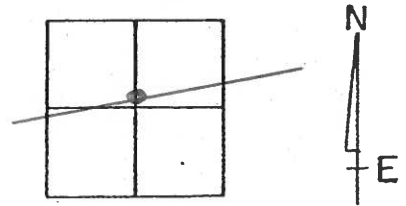
TYPE MONUMENT MOBORA MOD.

ON SURFACE - BELOW yes

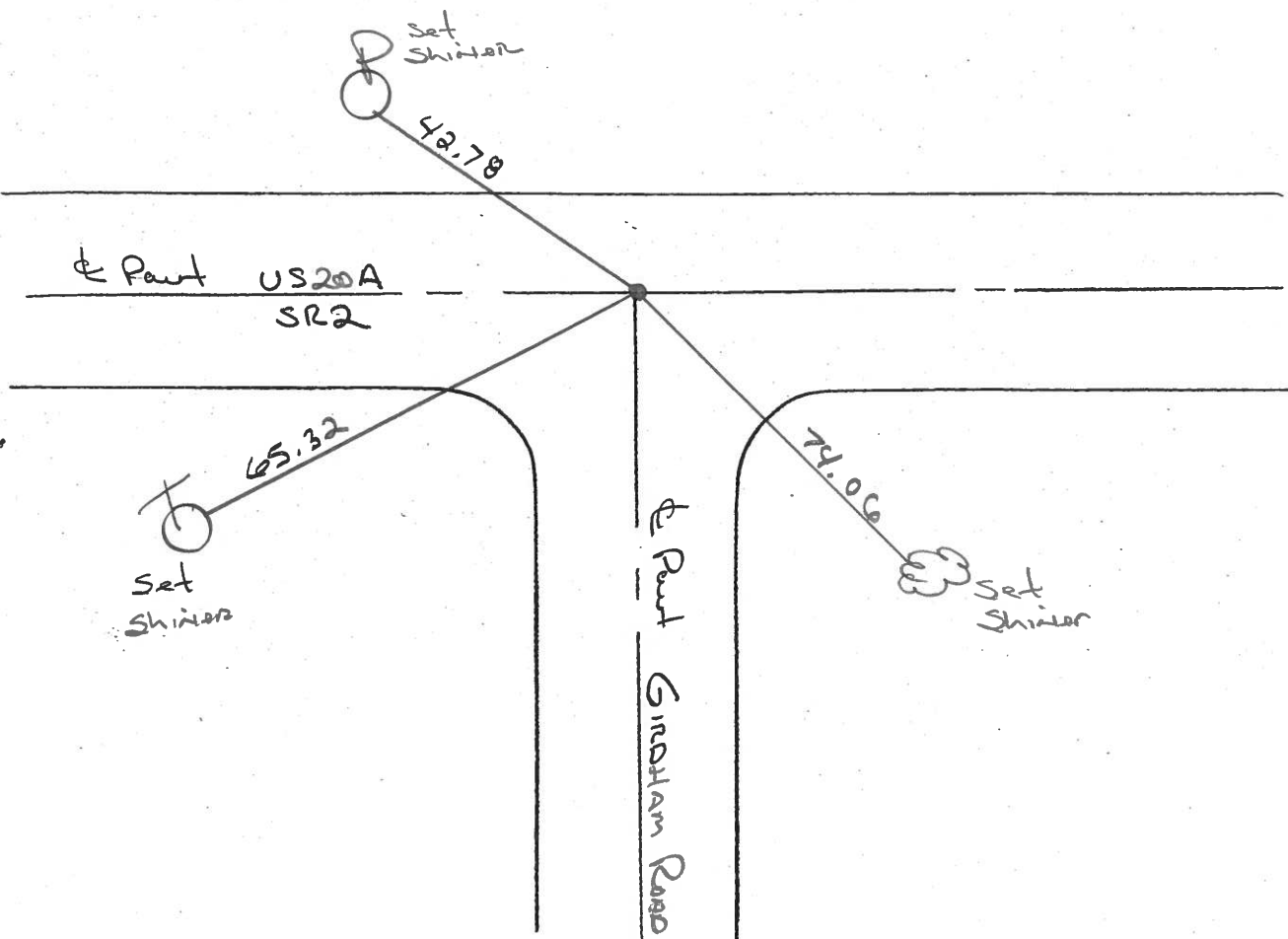
LEFT - PAV'T. RIGHT 1.0'

27' TO N EDGE PAVEMENT

S.L.M. 78+70

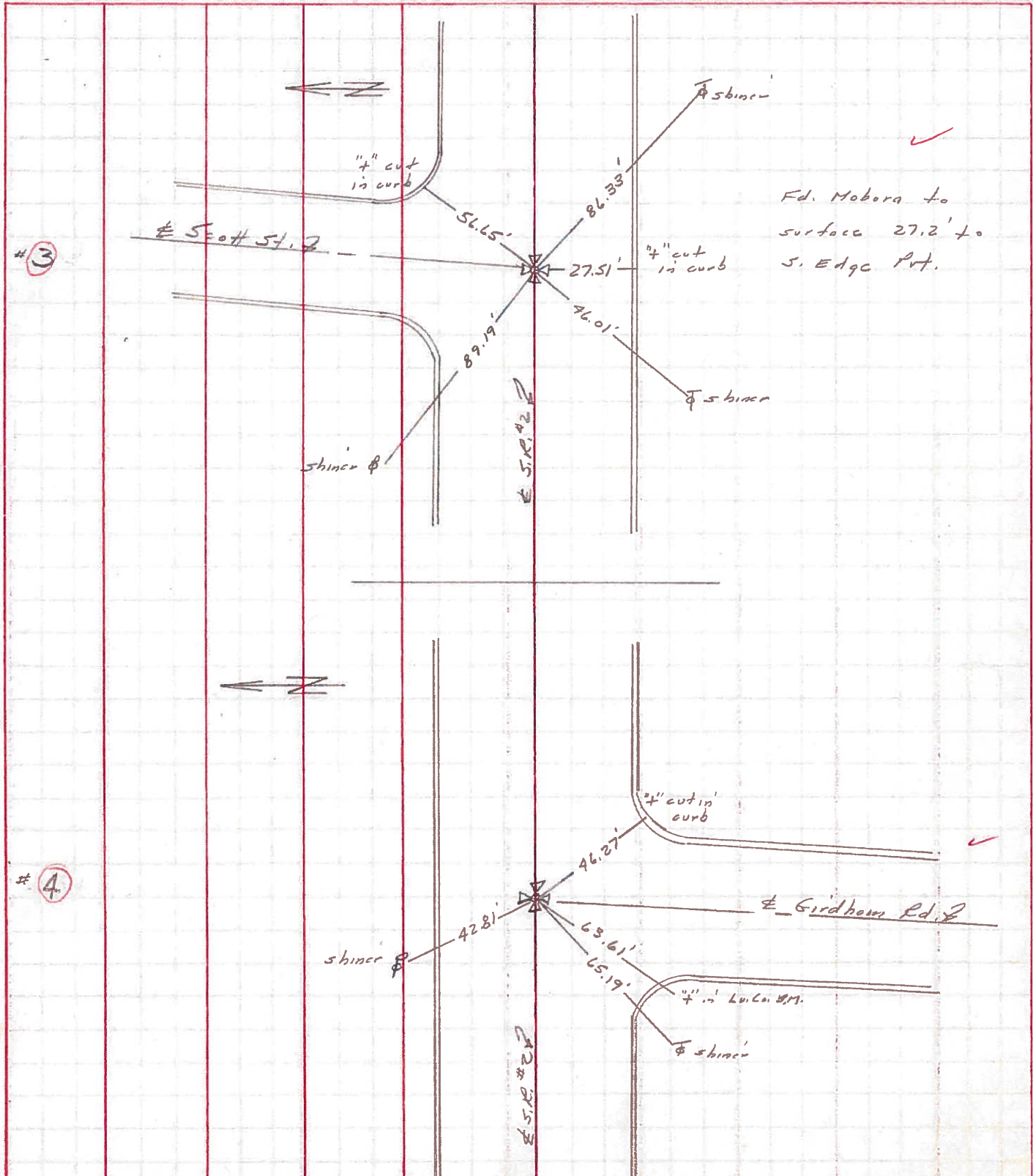


Set mag nail / washer  
1-13-04 DCH



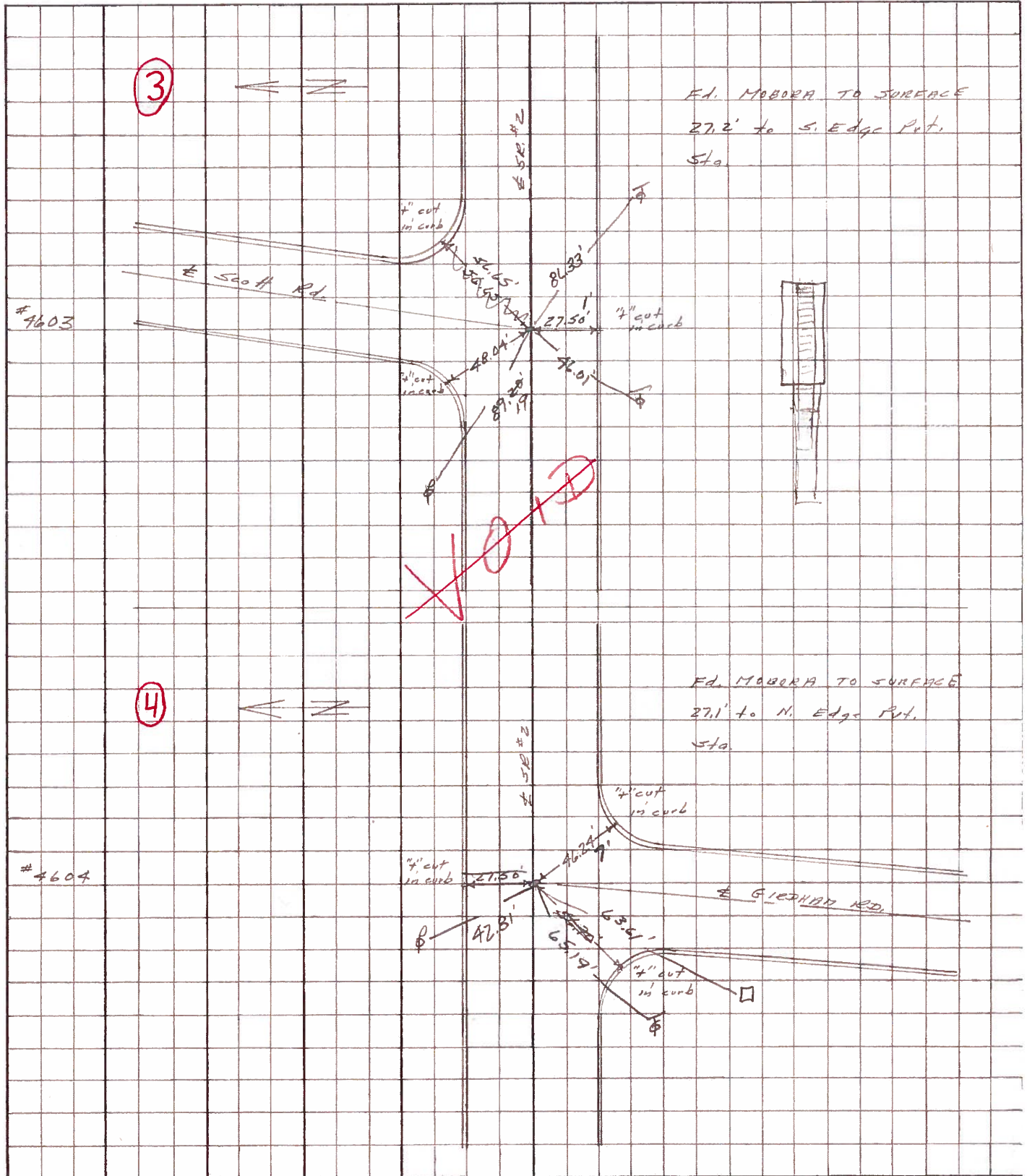
PERSONNEL	TITLE	PERSONNEL	TITLE	COUNTY	DATE	WEATHER	TEMP.
Stone		Miller		Lucas	3 June 71	Fair	67°
Michalak		Brudley		#2			
Schroder				SEC. Fulton Co. Line East			
Face							

DESCRIPTION: References to Control Points JOB NO. \_\_\_\_\_



PERSONNEL	TITLE	PERSONNEL	TITLE	COUNTY	DATE
<u>Stace</u>	<u>Notes</u>			<u>Lucas</u>	<u>11 July 68</u>
<u>Nichalok</u>	<u>Tape</u>			<u>#2</u>	<u>Warm</u>
<u>Schroeder</u>	<u>Tape</u>			<u>Chi. Pike</u>	<u>80°</u>

DESCRIPTION References to Control Points LEFT CENTER LINE RIGHT JOB NO. \_\_\_\_\_



PERSONNEL TITLE PERSONNEL TITLE

COUNTY Lucas

DATE 3-20-53

S. R. #2

WEATHER

SEC. G, H-2, H-1, H-3, I, J, K-1

TEMP

DESCRIPTION Toledo - Wauseon Rd.

JOB NO.

LEFT

CENTER LINE

RIGHT

LEFT	CENTER LINE	RIGHT
Sta. 0+00 Fulton-Lucas Rd. Brass Screw		Perm. stone N.E. to corner of bldg. 94.4' 54.35' N.W. to witness man. 38.51' S. to shiner in T.P. 27.87' S. to shiner in T.P. (gone) 68.38'
	#112 ①	
Sta. 25+46.70 Route 64 Brass screw		N.W. to witness man. 42.28' N.E. to shiner in 1st post. 50.94' S.E. to shiner in T.P. 37.36' S.W. to witness man. 45.16' N. to witness man. (bumped) 27.36' S.E. to N.W. cor. block building 70.59'
	#113 ②	
Sta. 51+96.27 Scott Rd. Brass screw		N.W. to shiner in <sup>New</sup> P.P. 38.10' 37.09' N.E. to shiner in 15" Hickory 55.77' S.S.W. to shiner in 18" maple 22.66' S.E. to shiner in 40" maple 27.36' S. To Man. 19.08'
	#114 ③	
Sta. 78+35.15 Girdham Rd. Brass screw man.		S.E. "4" in pumpkin weed 67.50' N.W. to witness man. 29.21' S.W. to R.R. spk or shiner in P.P. 43.52' N.E. to block fdn. S.W. cor. bldg. 54.69' S.W. To witness Mon. 44.31'
	#115 ④	