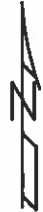
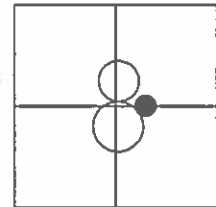


O.D.O.T. DISTRICT 2 SURVEY OFFICE (USE ONLY)

PERSONNEL _____ REFERENCE NO. 4 A SHEET 5 OF 11
 NOTES HOMAN DATE 7-29-16 ROUTE SR 2
 H.C. HOMAN WEATHER CLOUDY COUNTY LUCAS
 R.C. RYALL TEMP. 75°F TOWNSHIP SWANTON
 _____ SECTION 8
 _____ T 7 N R 5 E

TYPE MONUMENT MOBORA MON
~~ON SURFACE~~ - BELOW 5"
~~LEFT~~ - ☉ PAV'T - RIGHT 3.0'
23.5' TO RT EDGE PAVEMENT
 S.L.M. 100+55
 Grid: Northing: 701267.101 Easting: 1600251.266



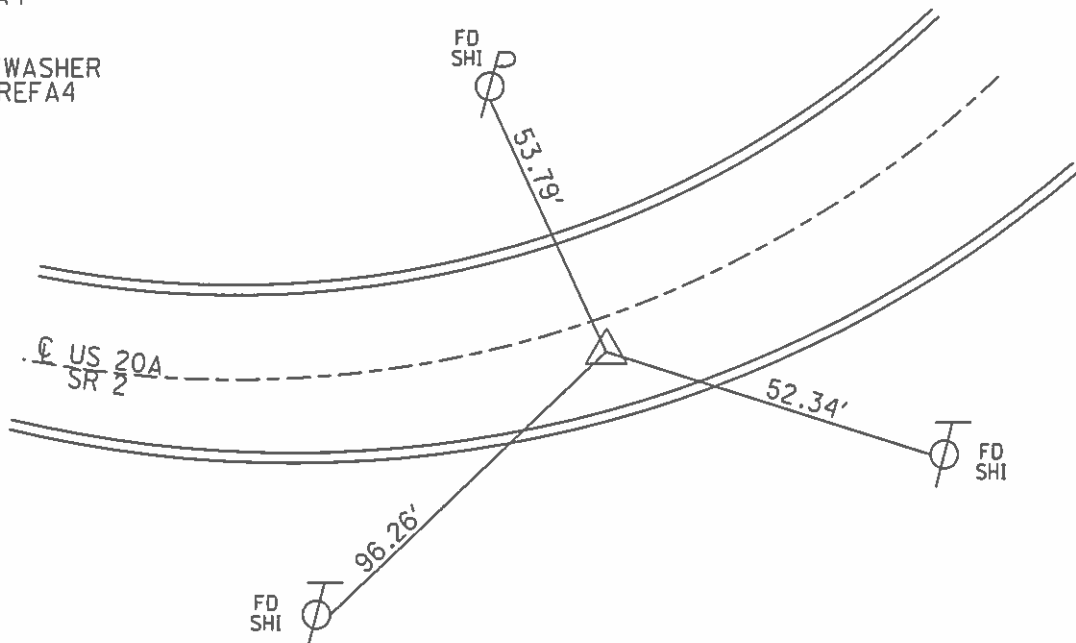
RECORD:
 PI CURVE LEFT
 EAST OF GIRDHAM

FD. MOBORA MON.
 6-15-03 DCH

SET MAG/WASH
 1-13-04 DCH

FD MOBORA MON
 5" DOWN
 GPS, REFA4
 7-29-16

SET MAG/WASHER
 GPS, NEWREFA4
 10-05-16



O.D.O.T. DISTRICT 2 SURVEY OFFICE

PERSONNEL

REFERENCE NO. 4-A

SHEET 5 OF 11

NOTES Homan

H.C. Homan

R.C. Ryall

DATE 6-15-03

WEATHER Fair

TEMP. 75°

ROUTE US20A
SR2

COUNTY LUCAS

TOWNSHIP Swanton

SECTION 8

T 7 N R S 5 E

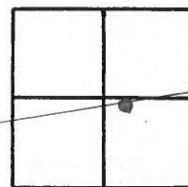
TYPE MONUMENT MOBORA mon.

ON SURFACE - BELOW 4.0

~~LEFT - C. PAV'T.~~ - RIGHT 3.0'

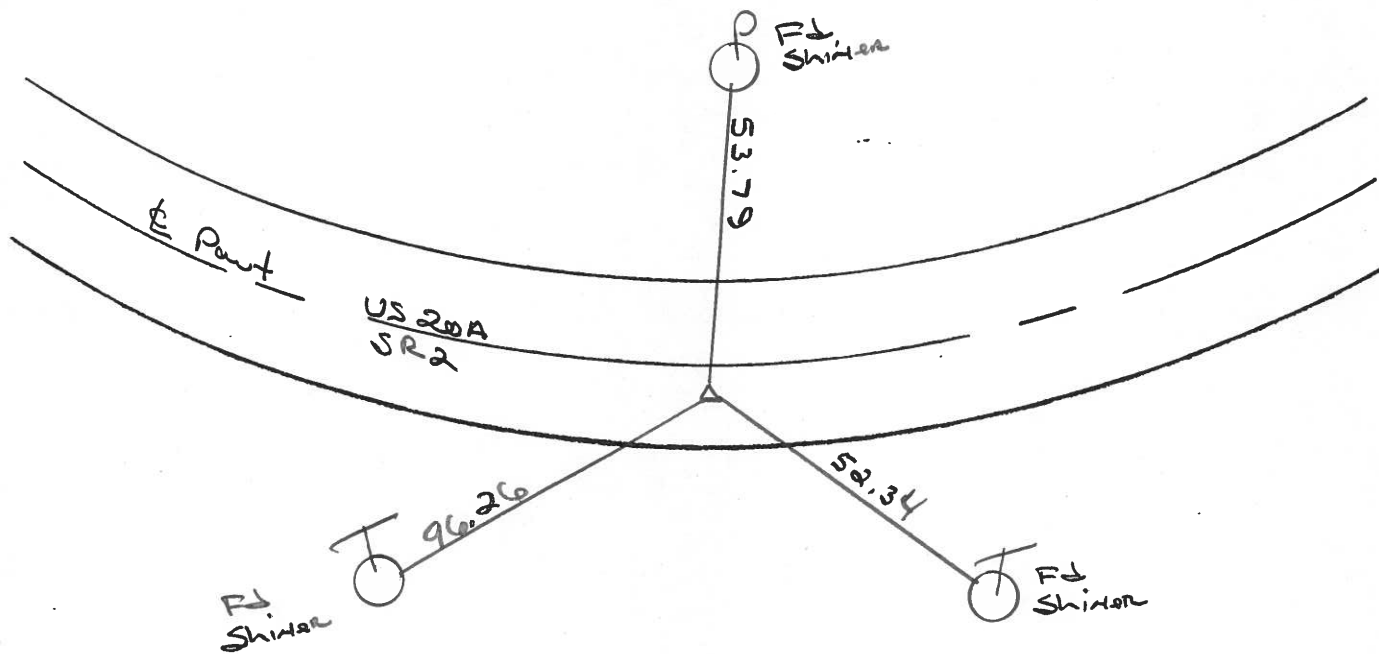
23.5 TO S EDGE PAVEMENT

S.L.M. 100+55



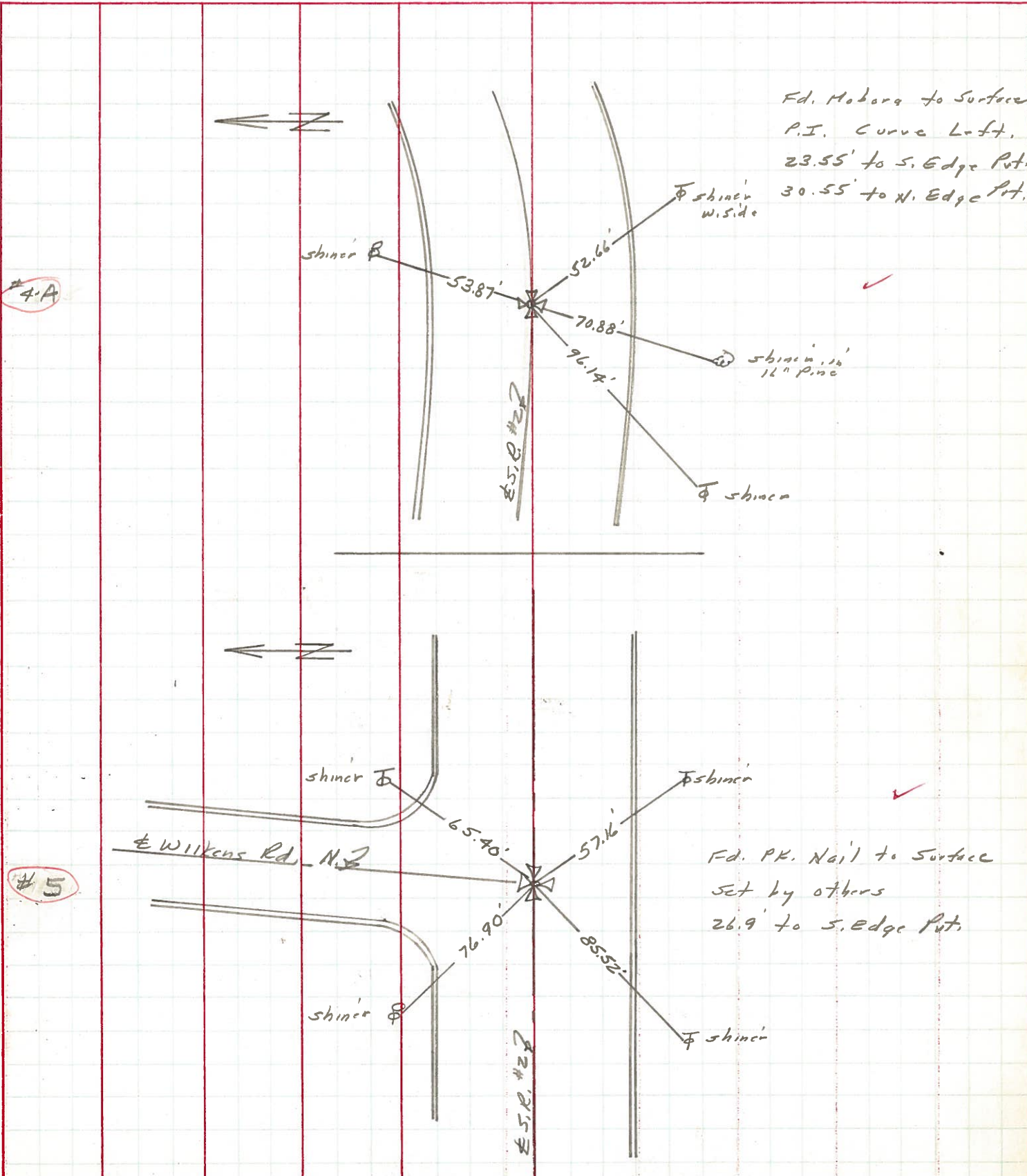
Set mag nail/washer
1-13-04 DCB

P. I.
Curve Left
EAST of GIRDHAM Road



PERSONNEL	TITLE	PERSONNEL	TITLE	COUNTY	DATE	WEATHER	TEMP.
Stone		Brindley		Lucas	3 June 71	Fair	70°
Michalak		Miller		S. R. #2			
Schroder				SEC. Fulton Co. Line East			
Farr							

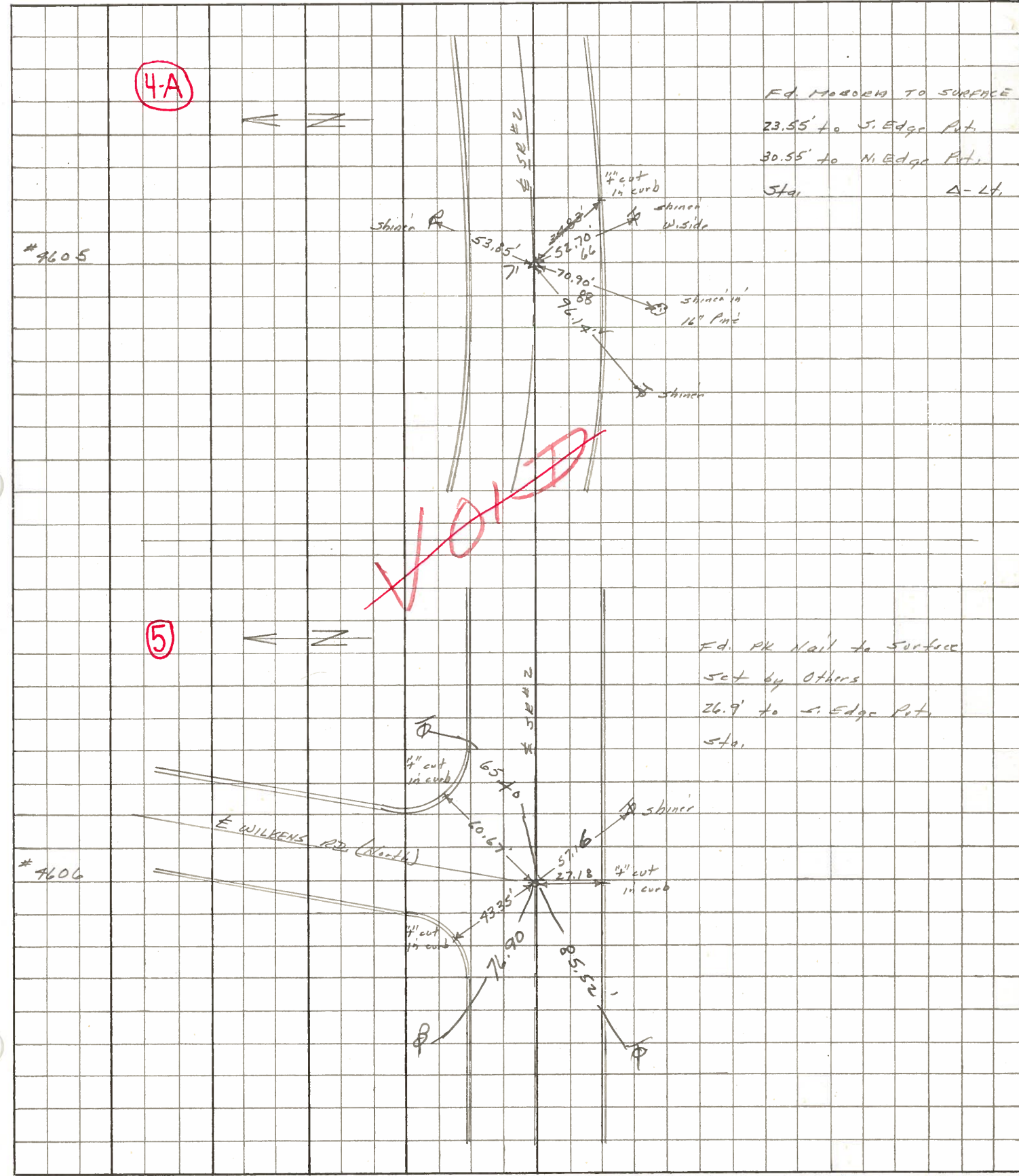
DESCRIPTION References to Control Points JOB NO. _____



PERSONNEL	TITLE	PERSONNEL	TITLE	COUNTY	DATE
Stone	Notes			Locas	11 July 68
Michalak	Tape			S. R. #2	WEATHER Warm
Schrader	Tape			SEC. Chi. Pike	TEMP. 81°

DESCRIPTION References to Control Points JOB NO. _____

LEFT CENTER LINE RIGHT



Fd. MARKER TO SURFACE
 23.55' to S. Edge Pkt.
 30.55' to N. Edge Pkt.
 Sta. A-Lt.

Fd. PK Nail to Surface
 set by Others
 26.9' to S. Edge Pkt.
 Sta.

#4605

#4606

PERSONNEL TITLE PERSONNEL TITLE

COUNTY Lucas

DATE 3-20-53

S. R. #2

WEATHER

SEC.

TEMP.

DESCRIPTION

LEFT

CENTER LINE

RIGHT

JOB NO.

Sta. 100+14.60			N.E. to shiner in 15" tree	✓ 40.16
P.I. Curve			N.N.W. to shiner in 24" maple	✓ 31.27
Brass Screw man. (4-in pav't.)			N.W. to shiner in 36" maple	49.00 48.94
			S.E. to shiner in T.P.	✓ 24.16'
	#116		N.E. to witness man	33.52
	(4-A)		NW " " "	35.87
			S	Plumbed 22.00
P.C. Curve			N.E. to shiner in P.P.	46.70 45.09'
Brass Cap			N.W. to shiner in 15" tree	✓ 30.76
Sta. 132+49.0			W.N.W. to shiner in 12" tree	✓ 62.91'
	#117		E.N.E. to shiner in 24" maple	✓ 89.16
Wilkins Rd. N.	found iron Bolt		NE. to witness man	55.70
Wilkins Rd. S.	found R.R. Spk		S.E. " " "	42.17
Sta. 134+10.10			S.W. " " "	37.77
P.I. of Curve		(Did not find)	S.W. to witness man.	42.00
$\Delta = 16^{\circ}-01'$			S.E. to 6" Steel Sign P.I.	54.25
T = 161.10	#118		N.W. to P.P. Shiner	33.45
D = 5'	(5)			
E = 11.27				
P.T. of Curve			N. to R/W man.	✓ 30.00'
Brass Cap			N.E. to shiner in 15" Walnut	✓ 45.52'
Sta. 135+69.10			N.W. to shiner in 24" walnut	52.19'
	#119		N.W. to S.E. Cor. Hdfdn	87.90
Sta. 160+02.03				
Midway Rd.			N.E. to shiner in P.P.	60.68
Iron rod in conc.			S.E. to shiner in T.P.	39.23
			N.W. to S.E. Cor. Conc. block bldg	60.46
			E.S.E. to witness man.	62.69
	#120		S.E. to witness man.	45.47