

O.D.O.T. DISTRICT 2 SURVEY OFFICE

PERSONNEL _____

REFERENCE NO. 5

SHEET 6 OF 11

NOTES Homan

H.C. Homan

R.C. Ryall

DATE 6-15-03

WEATHER Fair

TEMP. 75°

ROUTE US 20A
SR 2

COUNTY Lucas

TOWNSHIP Swanton

SECTION 8

T7 N R S E

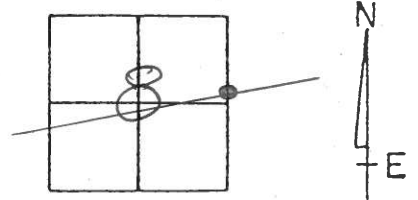
TYPE MONUMENT small R.R. spike

ON SURFACE - ~~BELOW~~ yes

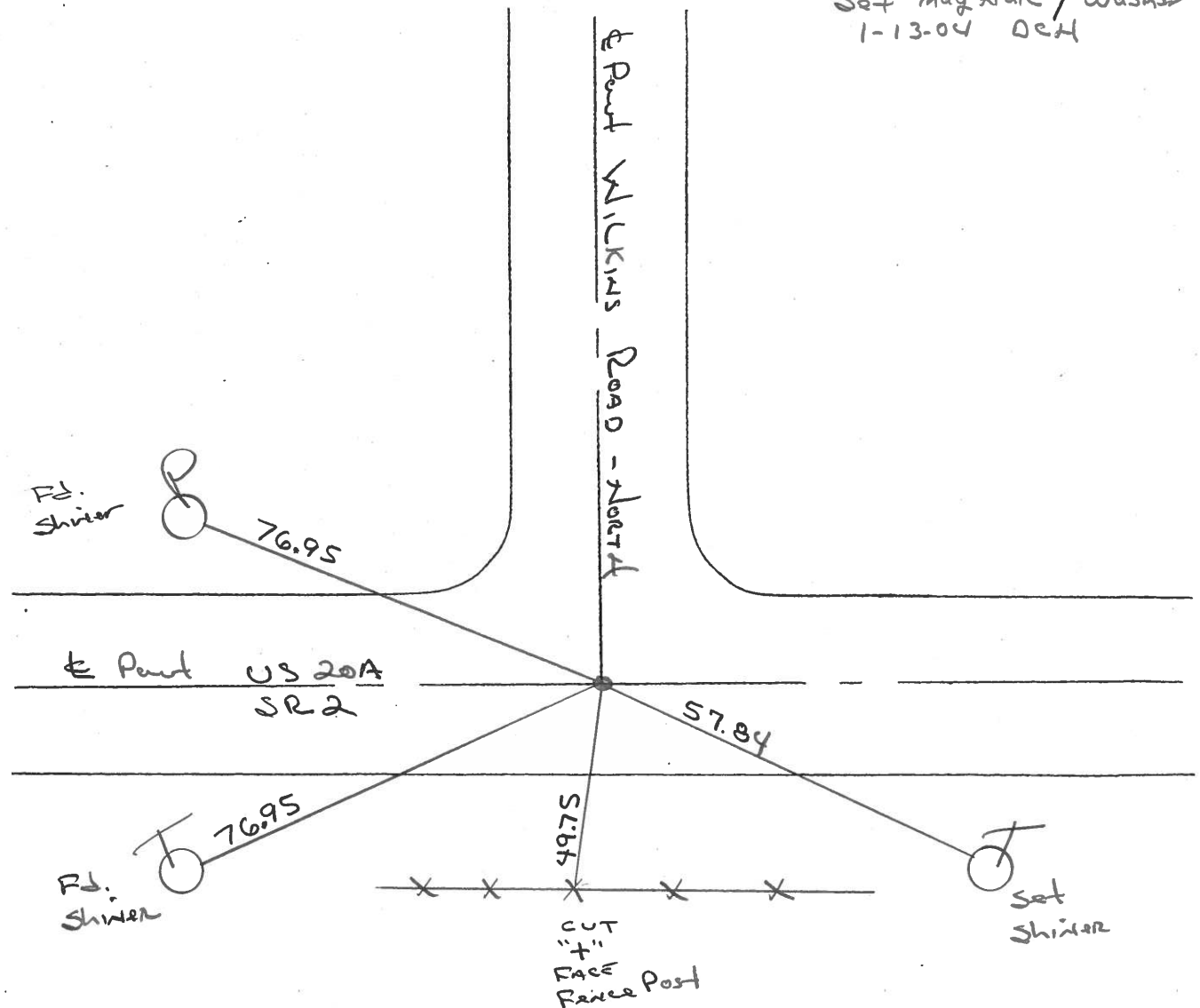
~~LEFT - & PAV'T. - RIGHT~~ yes

26.9 TO S EDGE PAVEMENT

S.L.M. 105+28



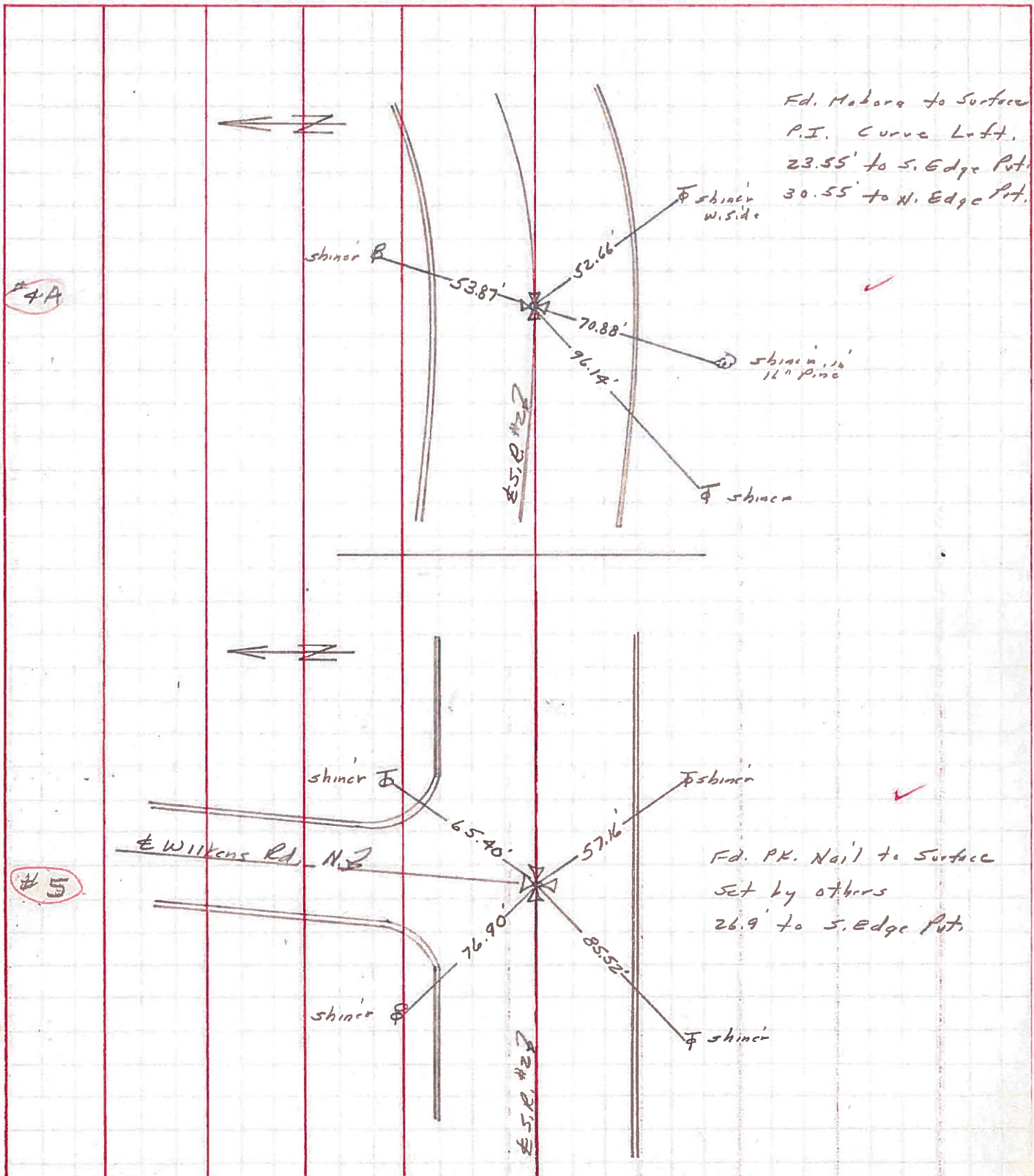
Set mag nail / washer
1-13-04 DEH



PERSONNEL	TITLE	PERSONNEL	TITLE
Stone		Quindley	
Michalak		Miller	
Schroder			
Farr			

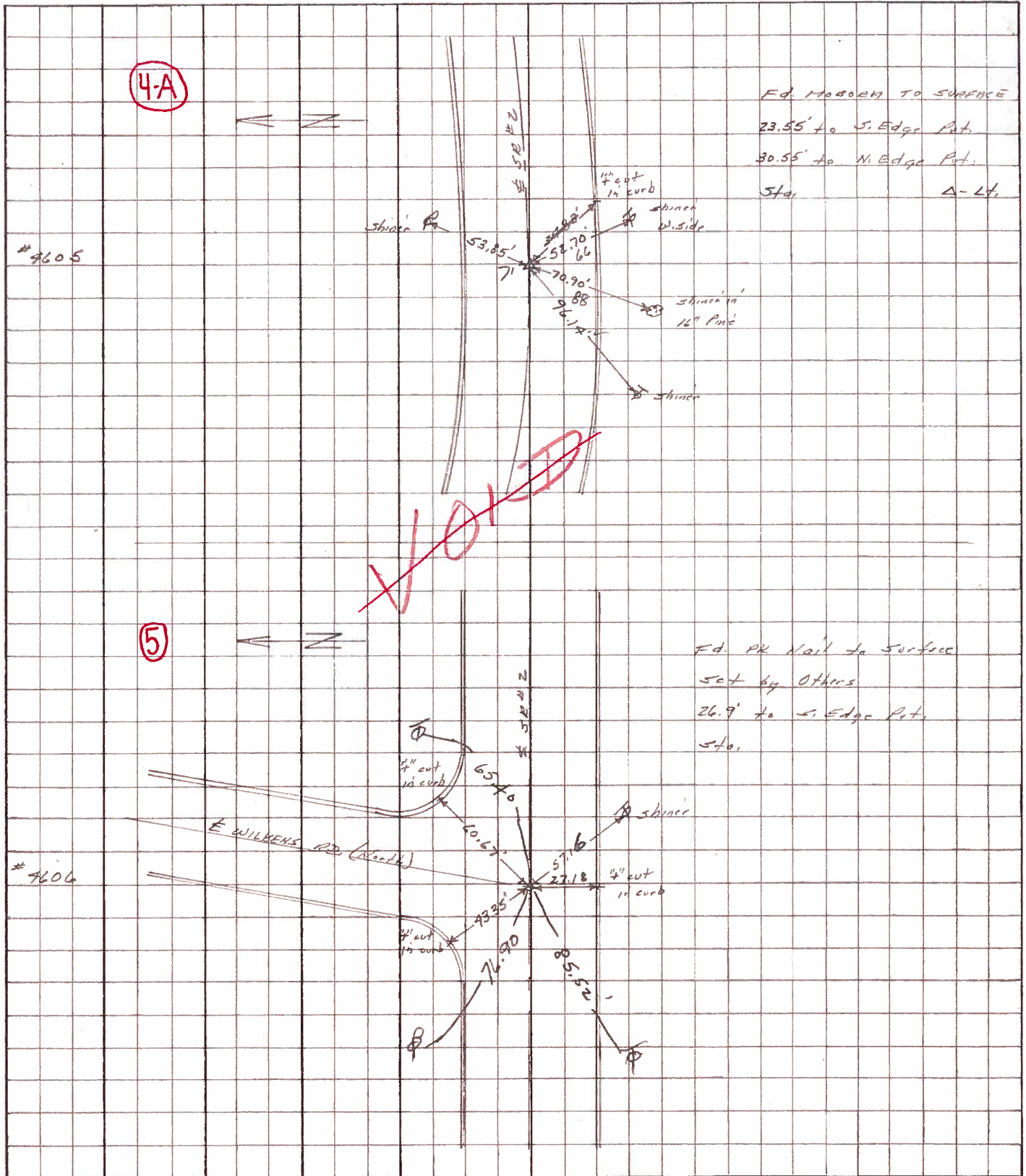
COUNTY Lucas DATE 3 June 71
 S. R. #2 WEATHER Fair
 SEC. Fulton Co. Line East TEMP. 70°

DESCRIPTION References to Control Points JOB NO. _____
 LEFT CENTER LINE RIGHT



PERSONNEL	TITLE	PERSONNEL	TITLE	COUNTY	DATE
Stone	Notes			Locas	11 July 68
Michalak	Tape			S. R. #2	WEATHER Warm
Schroder	Tape			SEC. Chi. Pike	TEMP. 81°

DESCRIPTION References to Control Points LEFT CENTER LINE RIGHT JOB NO.



PERSONNEL TITLE PERSONNEL TITLE

COUNTY Lucas

DATE 3-20-53

S. R. #2

WEATHER

SEC.

TEMP.

DESCRIPTION

LEFT

CENTER LINE

RIGHT

JOB NO.

Sta. 100+14.60			NE. to shiner in 15" tree ✓	40.16 ⁵⁹
P.I. Curve			N.W. to shiner in 24" maple ✓	31.27 ²⁰
Brass Screw	+ in pav't.		N.W. to shiner in 36" maple ✓	48.94 ^{49.00}
			S.E. to shiner in T.P. ✓	24.16'
	#116		N.E. to witness man	33.52
	(4-A)		N.W. " " "	35.87
			S Planted	22.00
P.C. Curve			N.E. to shiner in P.P. ✓	46.70 ^{45.09}
Brass Cap			N.W. to shiner in 15" tree "	30.76
Sta. 132+49.00			W.N.W. to shiner in 12" tree	62.91'
	#117		E.N.E. to shiner in 24" maple ✓	89.16
Wilkins Rd. N.	found iron Bolt		N.E. to witness man	55.70
Wilkins Rd. S.	found P.P. Spk		S.E. " " "	42.17
Sta. 134+10.10			S.W. " " "	37.77
P.I. of Curve		(Did not find)	S.W. to witness man.	42.00
$\Delta = 16^{\circ}-01'$			S.E. to 6" Steel Spk P.P.	54.25
T = 161.10	#118		N.W. to P.P. shiner	33.45
D = 5'	(5)			
E = 11.27				
P.T. of Curve			N. to R/W man.	30.00' ✓
Brass Cap			N.E. to shiner in 15" walnut ✓	45.52'
Sta. 135+69.10			N.W. to shiner in 24" walnut	52.19'
	#119		N.W. to S.E. Cor. Ho. file	87.90
Sta. 160+02.03				
Midway Rd.			N.E. to shiner in P.P.	60.68'
Iron rod in conc.			S.E. to shiner in T.P.	39.23
			N.W. to S.E. Cor. Conc. block bldg.	60.46
	#120		E.S.E. to witness man.	62.69
			S.E. to witness man.	45.47'