

O.D.O.T. DISTRICT 2 SURVEY OFFICE (USE ONLY)

PERSONNEL

REFERENCE NO. 10

SHEET 12 OF 29

NOTES LOEHRKE

DATE 4/1/94

ROUTE SR 2

H.C. CANTERBURY

WEATHER NICE

COUNTY LUCAS

R.C. VOGEL

TEMP. 52°

TOWNSHIP MONCLOVA

DWG BY RHOADES PID 88525

SECTION 2

T 7 N R 9 E

TYPE MONUMENT MONBOX W/1" IPIN

ON SURFACE - ~~BELOW~~ ON

OFFSET C PAVEMENT ON LT : RT

- TO - EDGE PAVEMENT

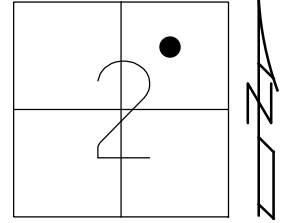
STATION: 258+23.08

HORZ.DATUM: NAD83 2011

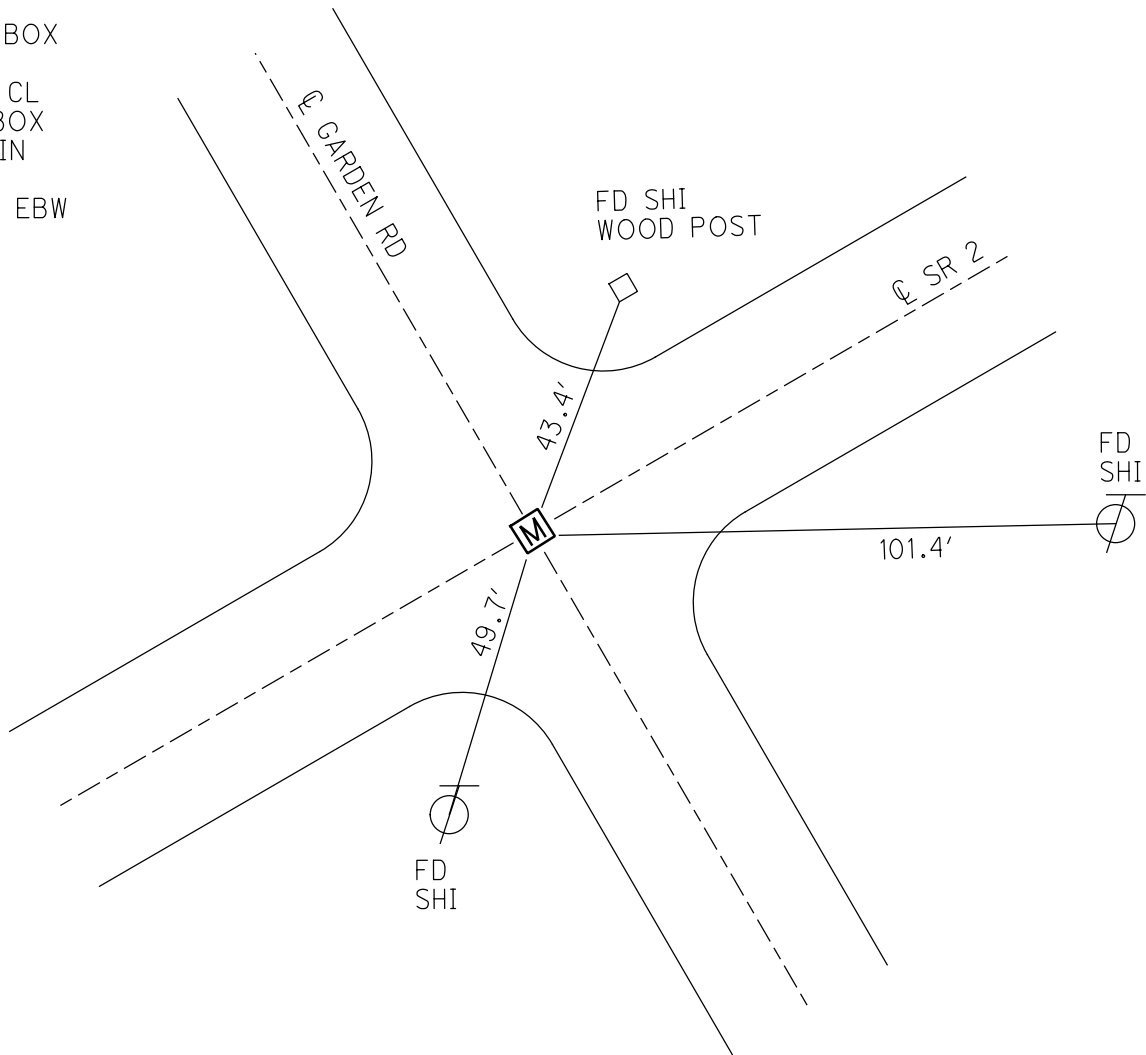
GEOID: NAVD88 2012A

GRID: NORTHING: 707199.929

EASTING: 1614804.559



RECORD:
FD MON BOX
W/ IPIN
4/1/94, CL
FD MONBOX
W/ 1" IPIN
REF10
1/27/15, EBW

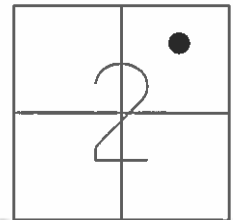


O.D.O.T. DISTRICT 2 SURVEY OFFICE (USE ONLY)

PERSONNEL _____ REFERENCE NO. 10 SHEET 12 OF 31

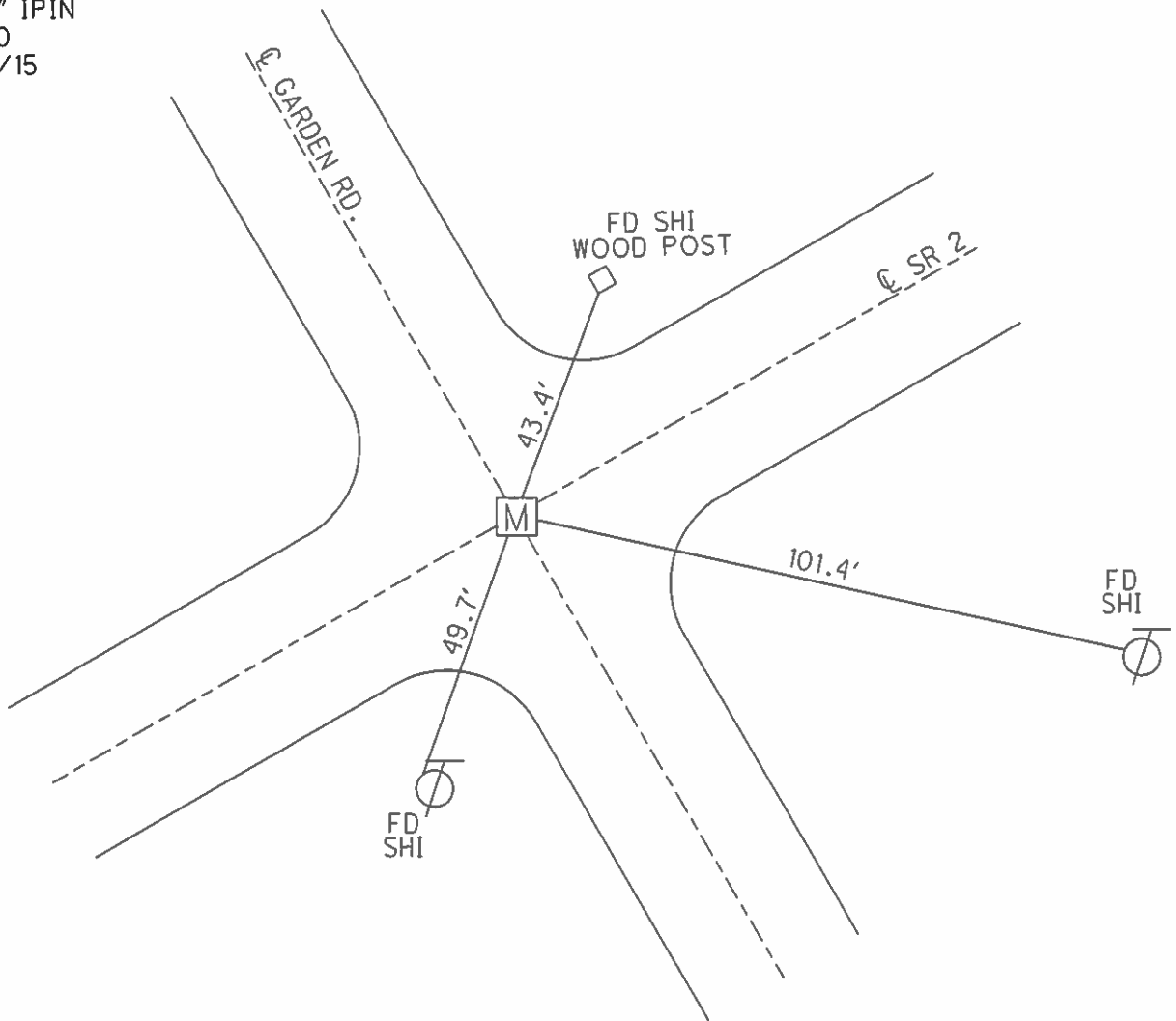
NOTES LOHRKE DATE 4/1/94 ROUTE SR 2
 H.C. CANTERBURY WEATHER CLEAR COUNTY LUCAS
 R.C. VOGEL TEMP. 55° TOWNSHIP MONCLOVA
 _____ SECTION 2
 _____ T 7 N R 9 E

TYPE MONUMENT MONBOX
 ON SURFACE - ~~BELOW~~ ON
 LEFT - ☉ PAV'T - RIGHT ON
 _____ TO _____ EDGE PAVEMENT
 S.L.M. 258+23.08



GRID: NORTHING: 707199.929 EASTING: 1614804.559

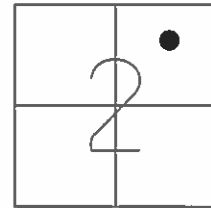
RECORD:
 FD MON BOX
 W/ 1" IPIN
 REF10
 1/27/15



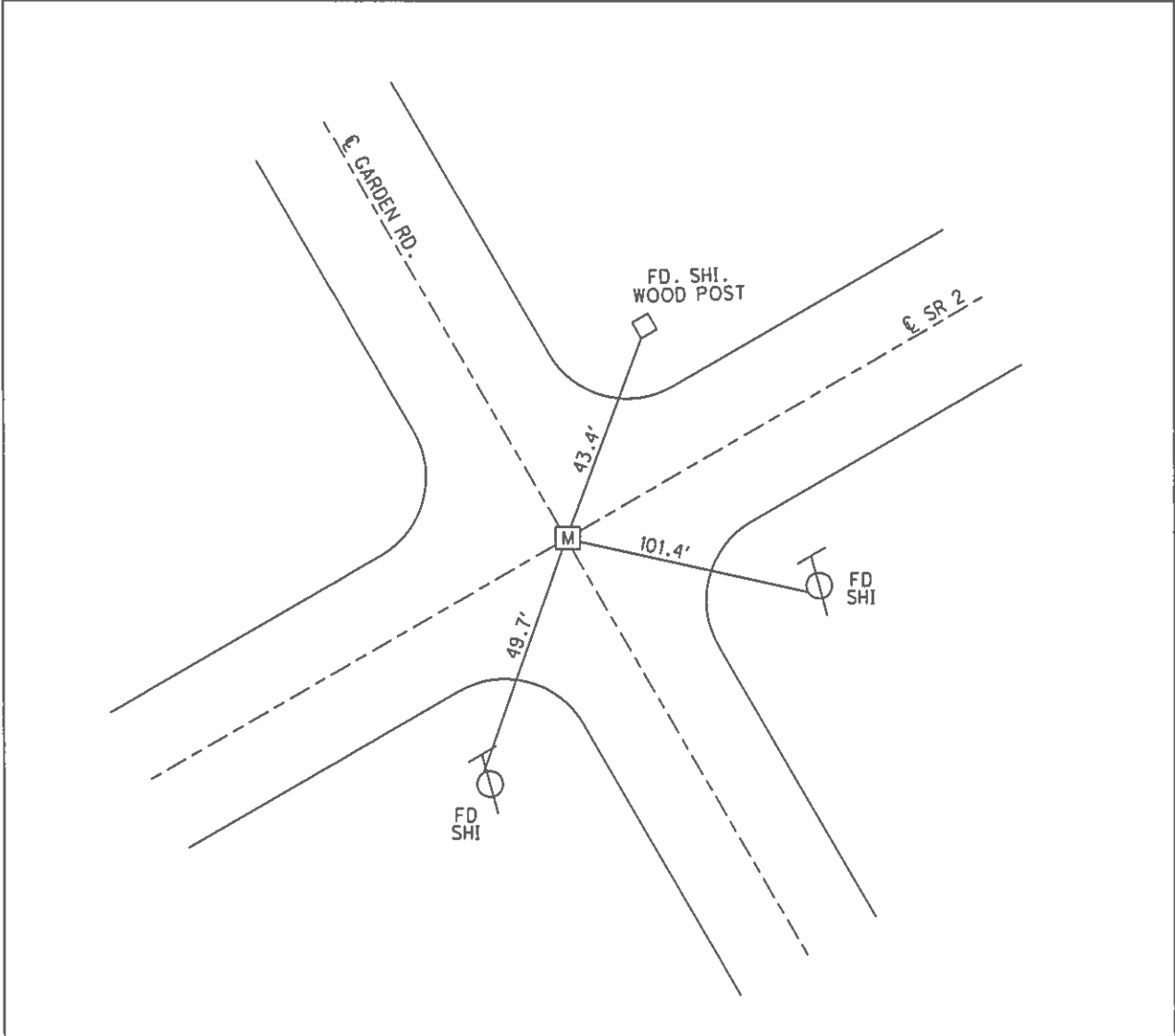
O.D.O.T. DISTRICT 2 SURVEY OFFICE (USE ONLY)

PERSONNEL _____ REFERENCE NO. 10 SHEET 2 OF 25
 NOTES LOEHRKE DATE 4/1/94 ROUTE SR 2
 H.C. CANTERBURY WEATHER CLEAR COUNTY LUCAS
 R.C. VOGEL TEMP. 55° TOWNSHIP MONCLOVA
 _____ SECTION 2
 _____ T 7 N R 9 E

TYPE MONUMENT MONBOX
 ON SURFACE - ~~BELOW~~ ON
 LEFT - ☉ PAV'T - RIGHT ON
 _____ TO _____ EDGE PAVEMENT
 S.L.M. 258+42



GRID: NORTHING: _____ EASTING: _____



O.D.O.T. DISTRICT 2 SURVEY OFFICE

PERSONNEL _____

REFERENCE NO. 10

SHEET 2 OF 25

NOTES LOEHRKE

H.C. CANTERBURY

R.C. VOGEL

DATE 4-1-94

WEATHER Nice

TEMP. +55

ROUTE S.R. 2

COUNTY LUCAS

TOWNSHIP MONCLOVA

SECTION 2

T. 7 N. R. 9 E.

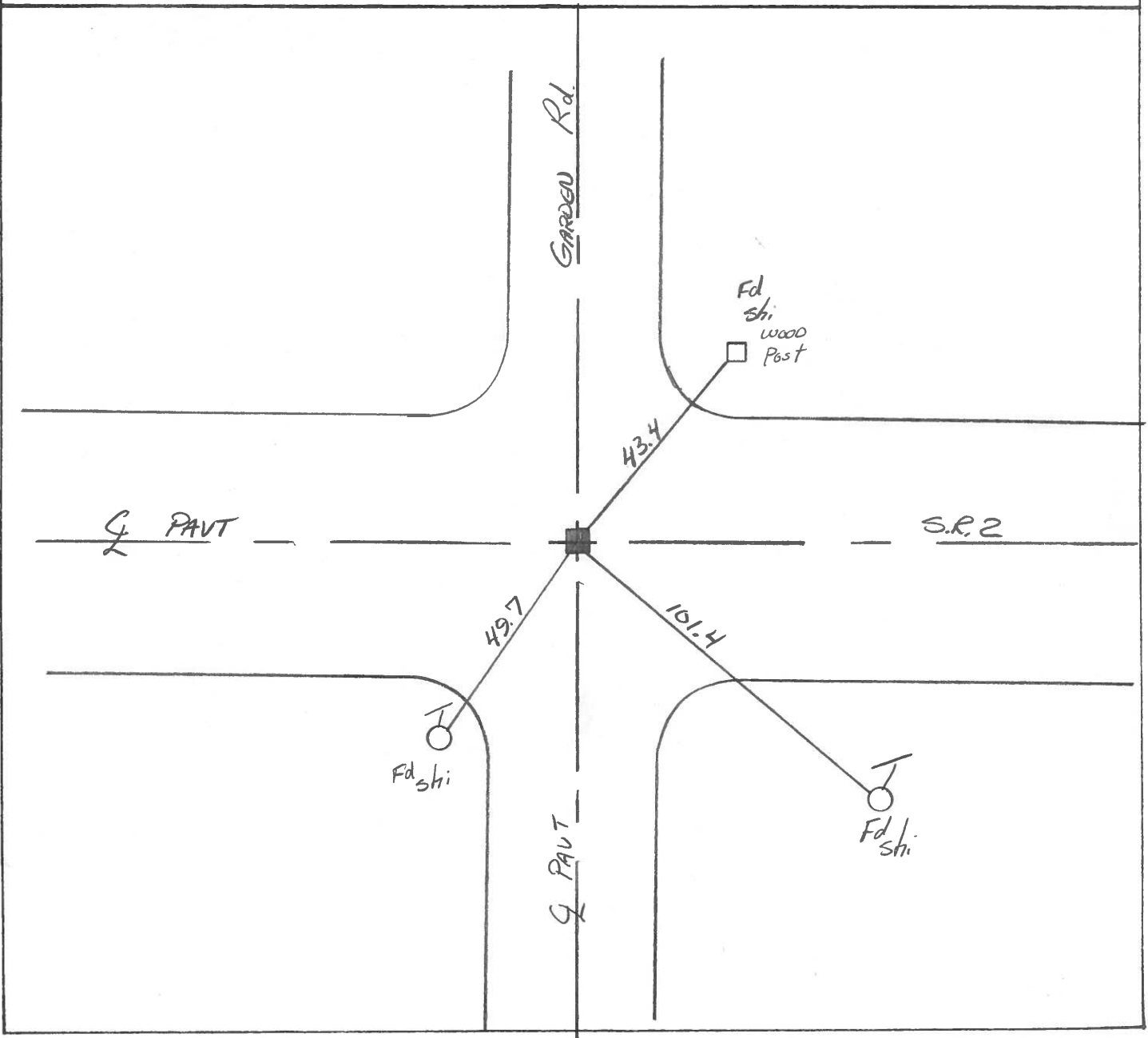
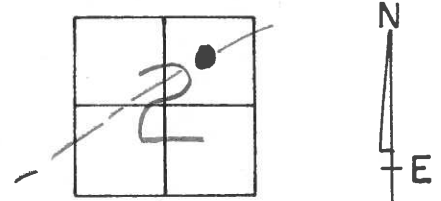
TYPE MONUMENT Mon. Box

ON SURFACE - BELOW Yes

~~LEFT~~ - ~~PAV'T.~~ - ~~RIGHT~~ Yes

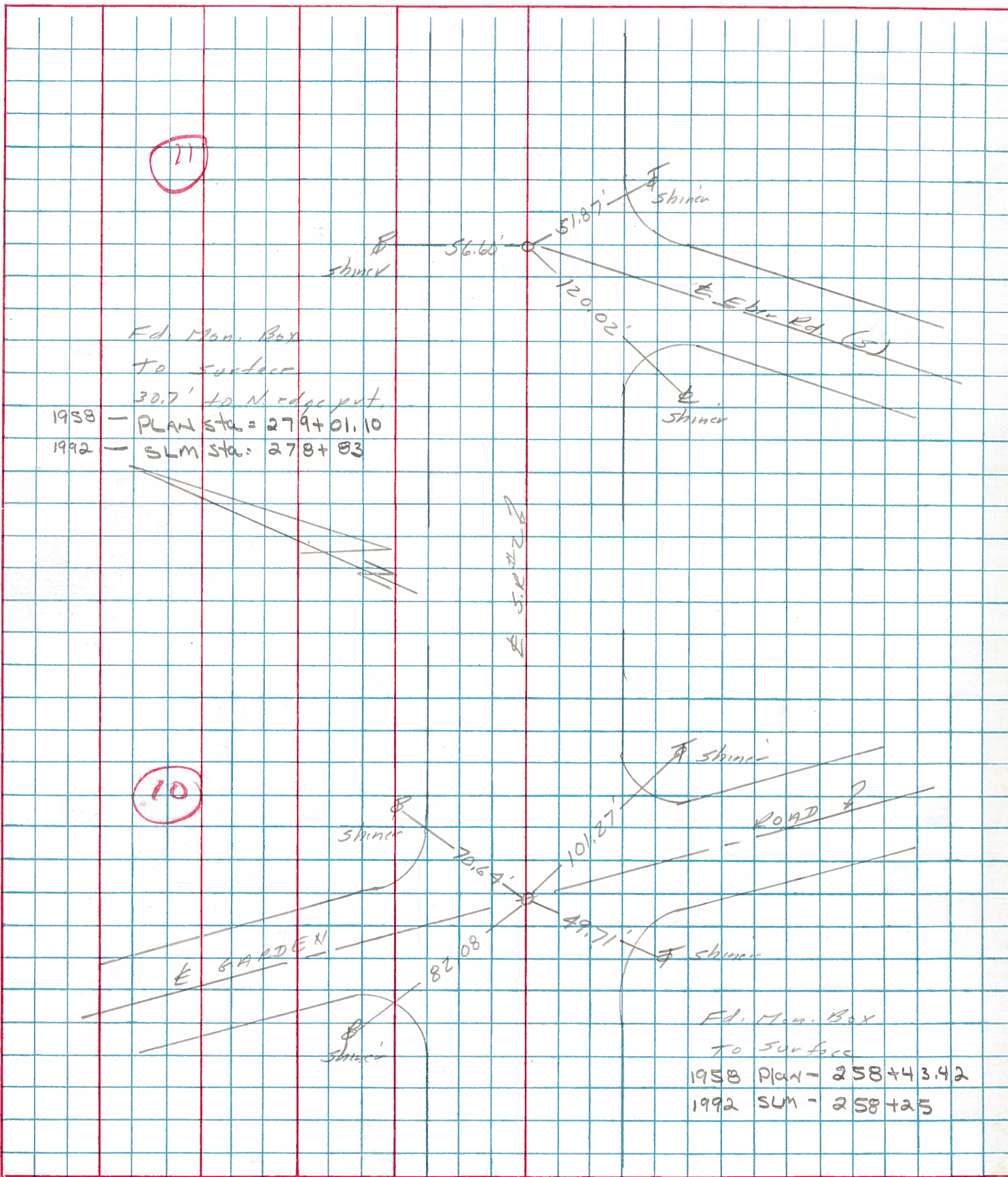
TO EDGE PAVEMENT

S.L.M. 258742



PERSONNEL	TITLE	PERSONNEL	TITLE	COUNTY	DATE	WEATHER	TEMP.
Stam				Lucas	1 Sept. 77	Humid	80°
E				#2			
Crew				Sec. Airport East			

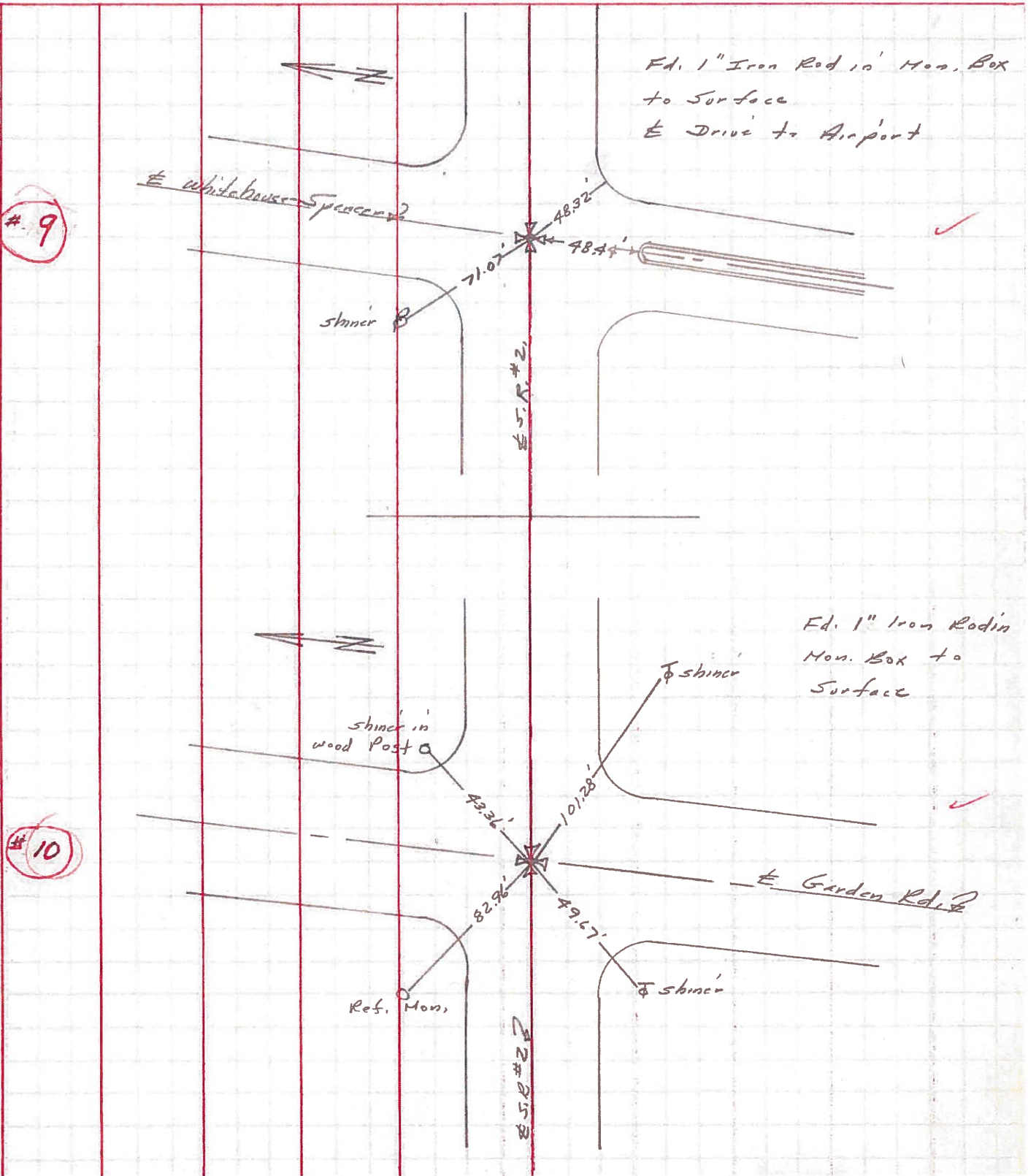
DESCRIPTION _____ *Placeros* _____ JOB NO. _____



PERSONNEL	TITLE	PERSONNEL	TITLE	COUNTY	DATE	WEATHER	TEMP.
Stone		Miller		Lucas	8 June 71	Cool	55°
Michalak		Bridley		S. R. #2			
Schroder				SEC. Fulton Co. Line East			
Farr							

DESCRIPTION References to Control Points JOB NO. _____

LEFT CENTER LINE RIGHT



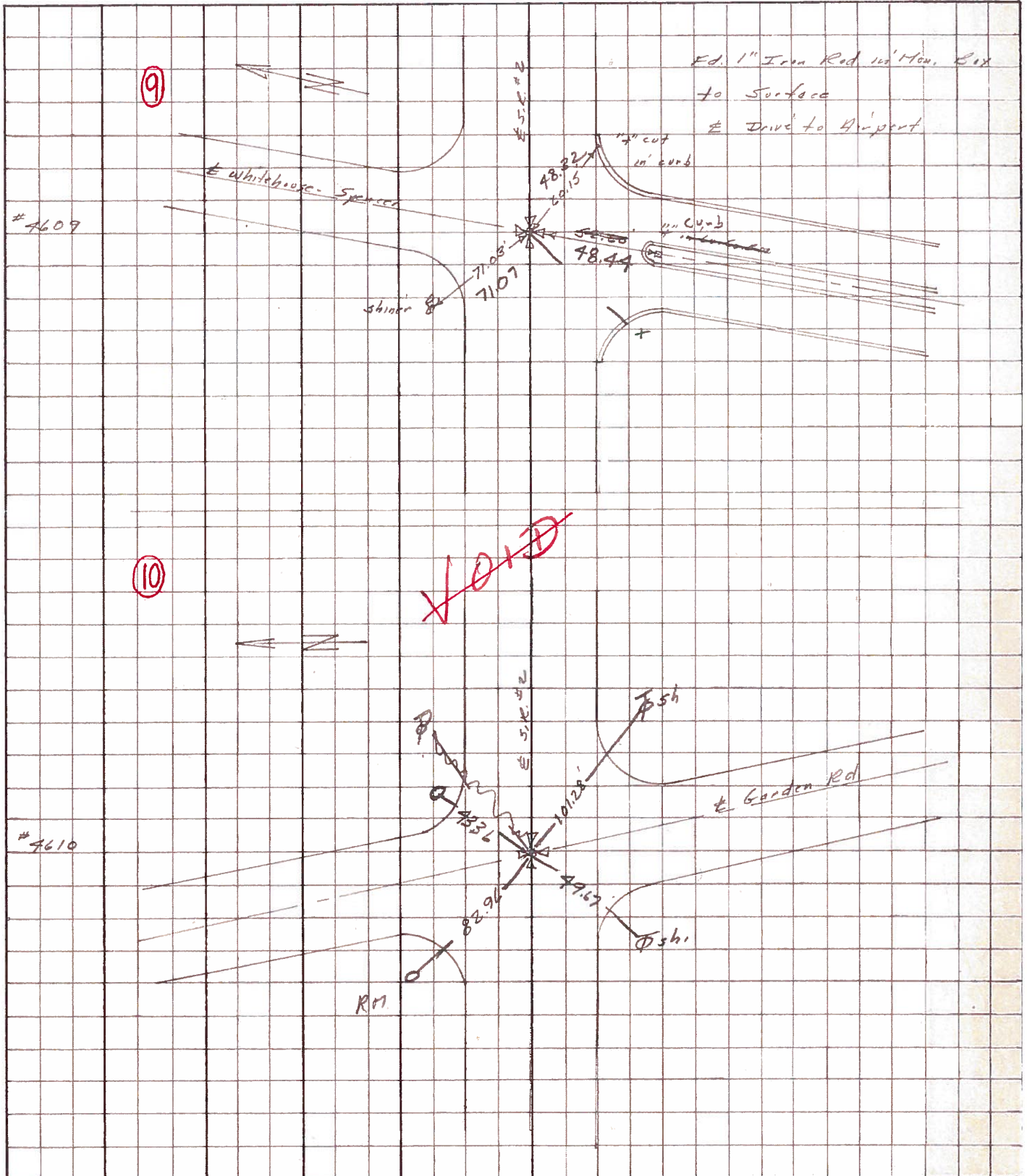
Resurfaced 1994

#9

#10

PERSONNEL	TITLE	PERSONNEL	TITLE	COUNTY	DATE
Stone	Notes			Lucas	12 July 68
Michalak	Topo			S. R. # 2	WEATHER Warm
Schroder	Topo			SEC. Chi. Pike	TEMP. 82°

DESCRIPTION References to Control Points JOB NO. _____



PERSONNEL TITLE PERSONNEL TITLE

COUNTY Lucas

DATE 3-19-53

S. R. #2

WEATHER

SEC.

TEMP.

DESCRIPTION

LEFT

CENTER LINE

RIGHT

JOB NO.

DESCRIPTION	LEFT	CENTER LINE	RIGHT	JOB NO.
Sta. 185+37.3		(Did not find)		
	#121			
Sta. 224+50			N.E. to witness mon. 58.22	
Whitehouse Spencer Rd.			N.W. to witness mon. 33.54'	
Rd. shiner set by			S. to Co. B.M. 52.35'	
Turnpike crew.				
	#122			
	(9)			
Sta. 258+42.8			S.E. to shiner in 10' cat/pq. 51.70'	
Garden Rd.			E.S.E. to shiner in 4 th cat/pq. 90.38'	
Brass cap			N.E. to center of Gov. B.M. (Elev. 28.39')	
	#123		S.W. to witness mon. 38.64'	
	(10)		N.E. to witness mon. 51.82'	
Sta. 279+01.10			S.E. to N.W. cor. of conc. block fdn. 43.68	
Eber Rd.			N.E. to witness mon. 55.98	
Brass plate			N.N.W. to witness mon. 33.11'	
ok 5-1-58			S.W. to shiner in T.P. 67.16	
	#124			
	(11)			
Sta. 291+13.0		(Did not find)		
	#125			

PERSONNEL TITLE PERSONNEL TITLE

COUNTY Lucas DATE _____S. R. #2 WEATHER _____SEC. G & H TEMP. _____

DESCRIPTION LEFT CENTER LINE RIGHT JOB NO. _____

Fd. #120
3/19/53 Intersection of S.R. #295 & S.R. #2 (RECORDED)
Iron Rod in Conc.

- ⑧
58.38' N.E. To shiner in P. Pole
60.46' N.W. To S.E. Cor. Conc. Block Bldg.
62.69' E.S.E. To Wit. Mon.
45.47' S.E. To Wit. Mon.

Fd. #122
3/19/53 Intersection Whitehouse-Spencer Rd & S.R. #2
Found shiner set by Survey Crew of Turnpike

Found Shiner
3-23-55 58.22' N.E. To Wit. Mon. ✓
Jameson 33.54' N.W. " " " ✓
82.66' S.E. R/w Mon. Did not find
52.35 49.69' S.W. Co. B.M.

Fd. #123
3/19/53 Intersection GARDEN Rd. & S.R. #2
Found BRASS Cap.

- ⑩
51.70' S.E. To shiner in 10" Catalpa.
90.38' E.S.E. To shiner in 4th " "
28.39' N.E. Center of Gov. B.M. (bent over)
38.64' S.W. To Wit. Mon.
51.82' N.E. Wit. Mon

- ⑪ Intersection Eber Rd. & S.R. #2
BRASS Plate

43.68' S.E. To N.W. Cor. of Conc. Block Foundation
61.73' S.W. To Wit. Mon. (bent over) loose
55.98' N.E. To Wit. Mon.
33.11' N.N.W. To " "
17.16' S.W. shiner T. Pole