

O.D.O.T. DISTRICT 2 SURVEY OFFICE (USE ONLY)

PERSONNEL

REFERENCE NO. 11

SHEET 13 OF 29

NOTES LOEHRKE

DATE 4/1/94

ROUTE SR 2

H.C. CANTERBURY

WEATHER NICE

COUNTY LUCAS

R.C. VOGEL

TEMP. 52°

TOWNSHIP MONCLOVA

DWG BY RHOADES

PID 88525

SECTION 2

T 7 N R 9 E

TYPE MONUMENT MONBOX W/1" IPIN

ON SURFACE - ~~BELOW~~ ON

OFFSET ☉ PAVEMENT ON LT : RT

- TO - EDGE PAVEMENT

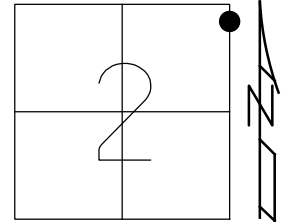
STATION: 278+80.54

HORZ.DATUM: NAD83 2011

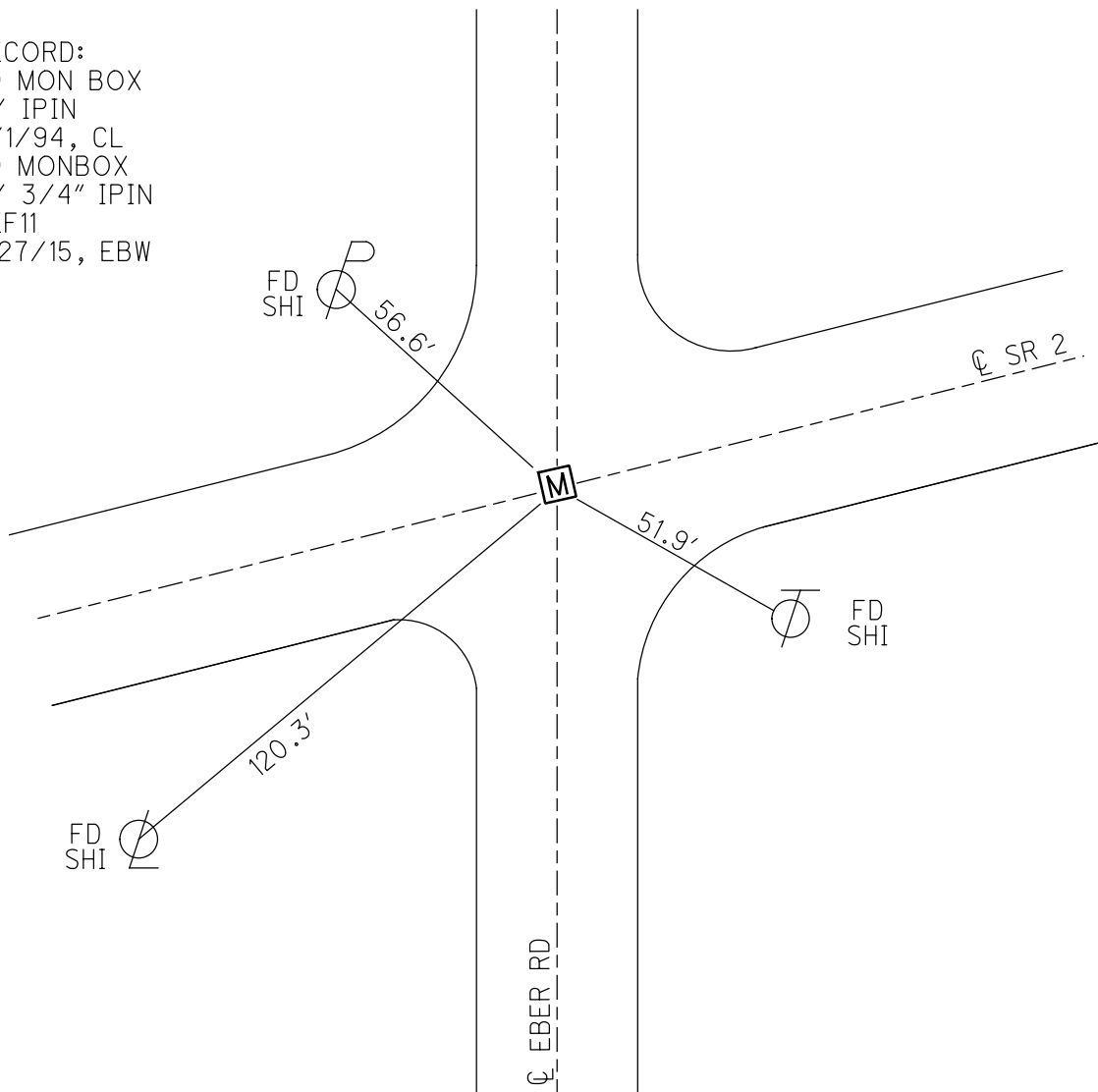
GEOID: NAVD88 2012A

GRID: NORTHING: 708090.573

EASTING: 1616659.261



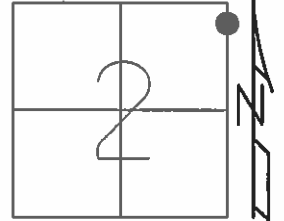
RECORD:  
FD MON BOX  
W/ IPIN  
4/1/94, CL  
FD MONBOX  
W/ 3/4" IPIN  
REF11  
1/27/15, EBW



**O.D.O.T. DISTRICT 2 SURVEY OFFICE (USE ONLY)**

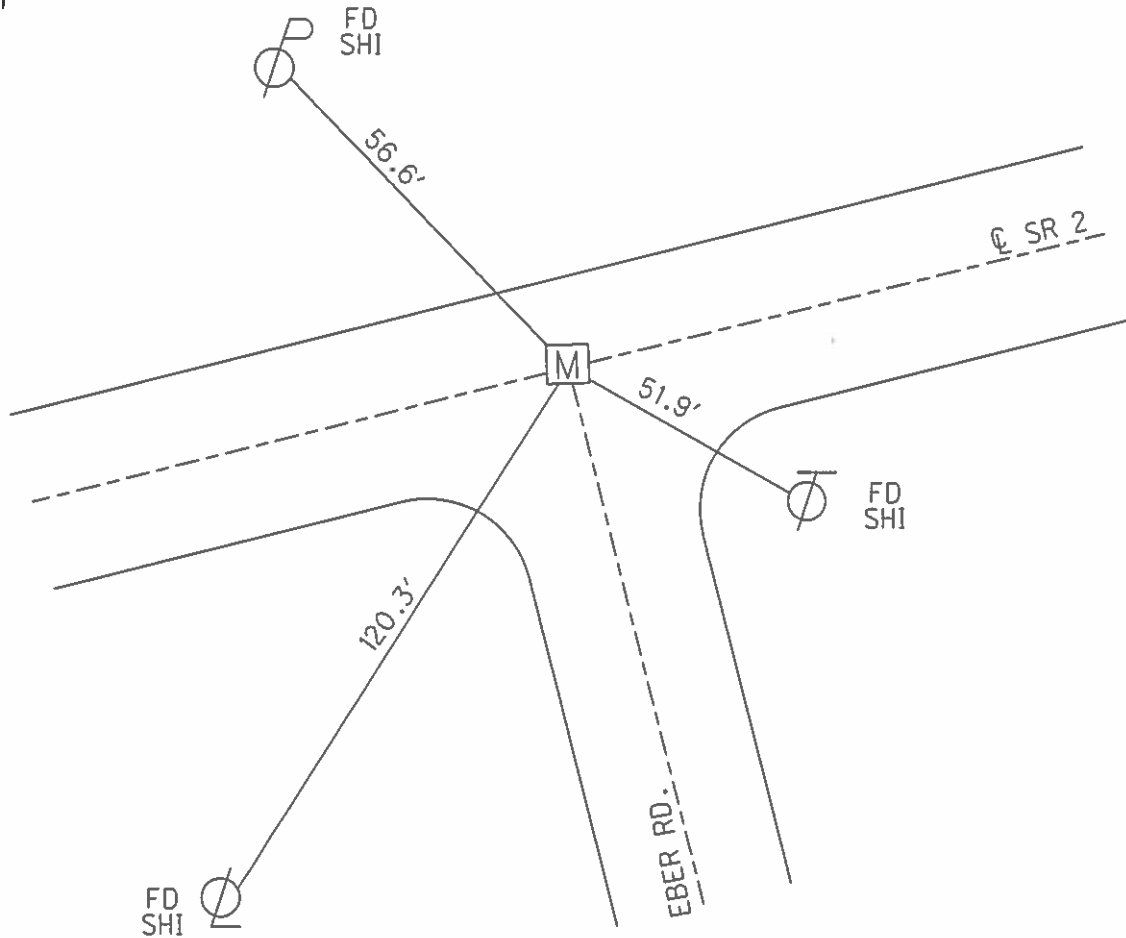
PERSONNEL \_\_\_\_\_ REFERENCE NO. 11 SHEET 13 OF 31  
 NOTES LOEHRKE DATE 4/1/94 ROUTE SR 2  
 H.C. CANTERBURY WEATHER NICE COUNTY LUCAS  
 R.C. VOGEL TEMP. 52° TOWNSHIP MONCLOVA-SPRINGFIELD  
 \_\_\_\_\_ SECTION 2  
 \_\_\_\_\_ T 7 N R 9 E

TYPE MONUMENT MON BOX  
 ON SURFACE - ~~BELOW~~ ON  
~~LEFT~~ - Q PAV'T - RIGHT ON \_\_\_\_\_  
 \_\_\_\_\_ TO \_\_\_\_\_ EDGE PAVEMENT  
 S.L.M. 278+80.54



GRID: NORTHING: 708090.573 EASTING: 1616659.261

RECORD:  
 FD MON BOX  
 W/ 3/4" IPIN  
 REF11



# O.D.O.T. DISTRICT 2 SURVEY OFFICE

PERSONNEL \_\_\_\_\_

REFERENCE NO. 11

SHEET 3 OF 25

NOTES Loehrke

H.C. CANTERBURY

DATE 4-1-94

ROUTE S.R. 2

R.C. VOGEL

WEATHER Nice

COUNTY Lucas

TEMP. +52

TOWNSHIP MONCLOM - SPRINGFIELD

SECTION 2 - 4

T. 1 N R. 9 E

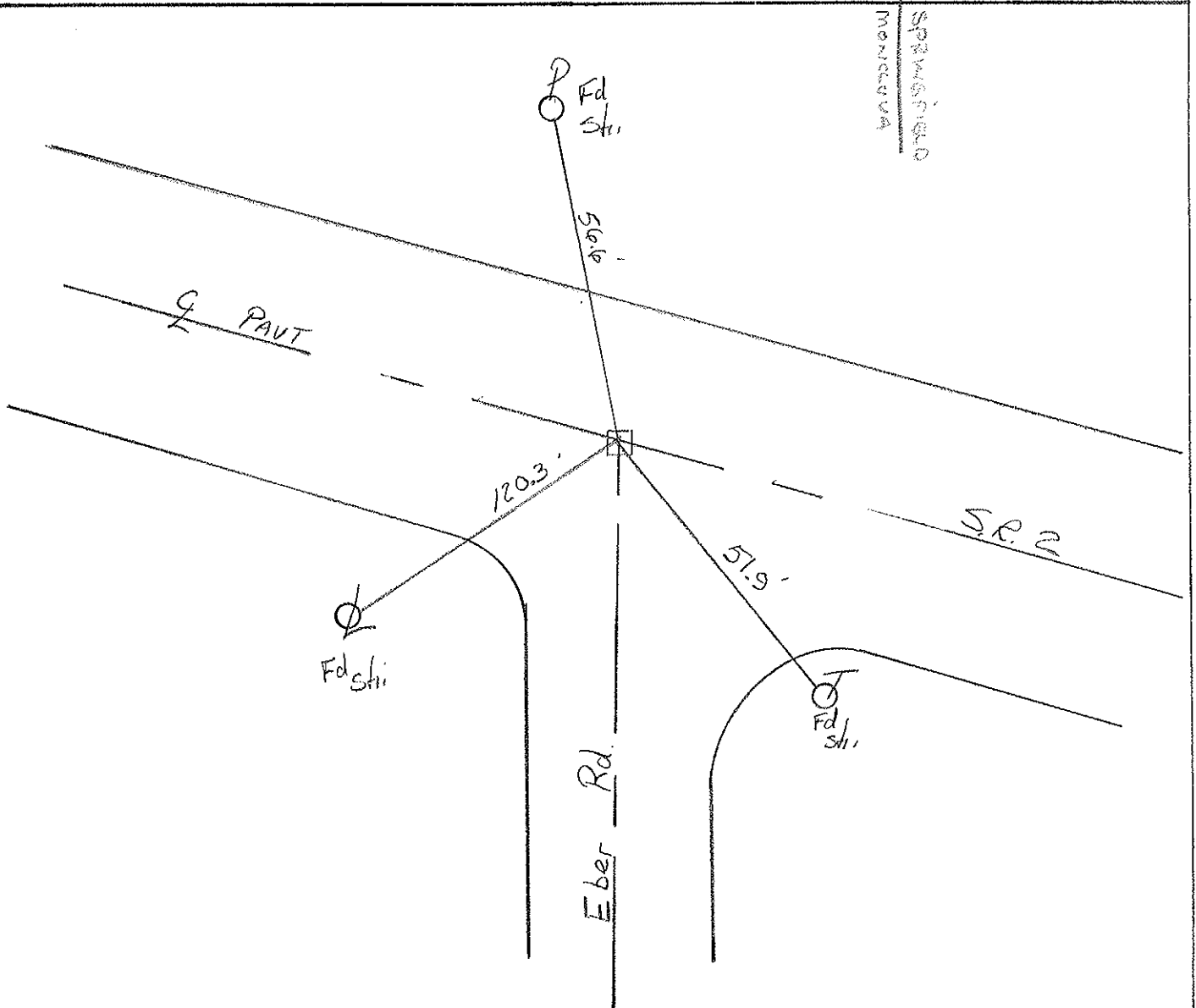
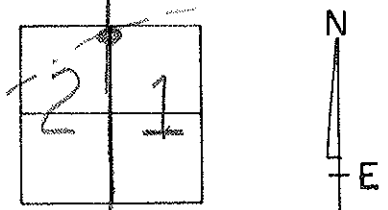
TYPE MONUMENT Mon. Box

ON SURFACE - ~~BELOW~~ Yes

~~LEFT - & PAV'T. - RIGHT~~ Yes

TO EDGE PAVEMENT

S.L.M. 278+72



# O.D.O.T. DISTRICT 2 SURVEY OFFICE

PERSONNEL \_\_\_\_\_

REFERENCE NO. 11

SHEET 3 OF 25

NOTES Loehrke

H.C. CANTERBURY

R.C. VOGEL

DATE 4-1-94

WEATHER Nice

TEMP. +52

ROUTE S.R. 2

COUNTY Lucas

TOWNSHIP MonCloon - Springfield

SECTION 2 - 1

T 7 N R 9 E

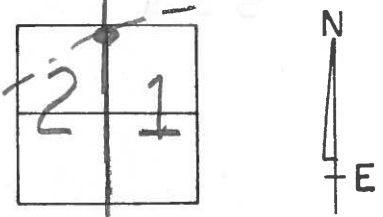
TYPE MONUMENT Mon. Box

ON SURFACE - ~~BELOW~~ Yes

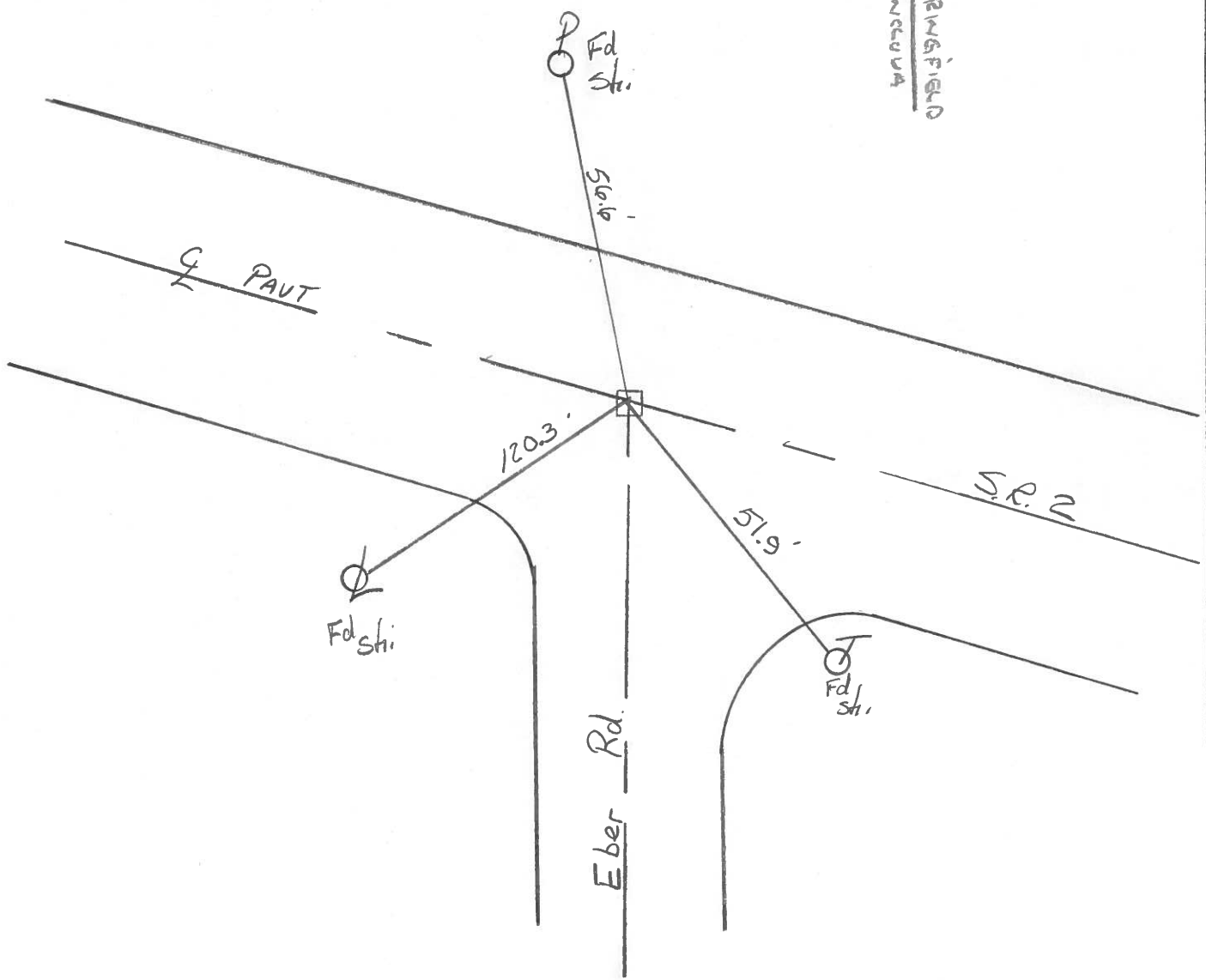
~~LEFT - & PAVT.~~ - ~~RIGHT~~ Yes

TO EDGE PAVEMENT

S.L.M. 278+72

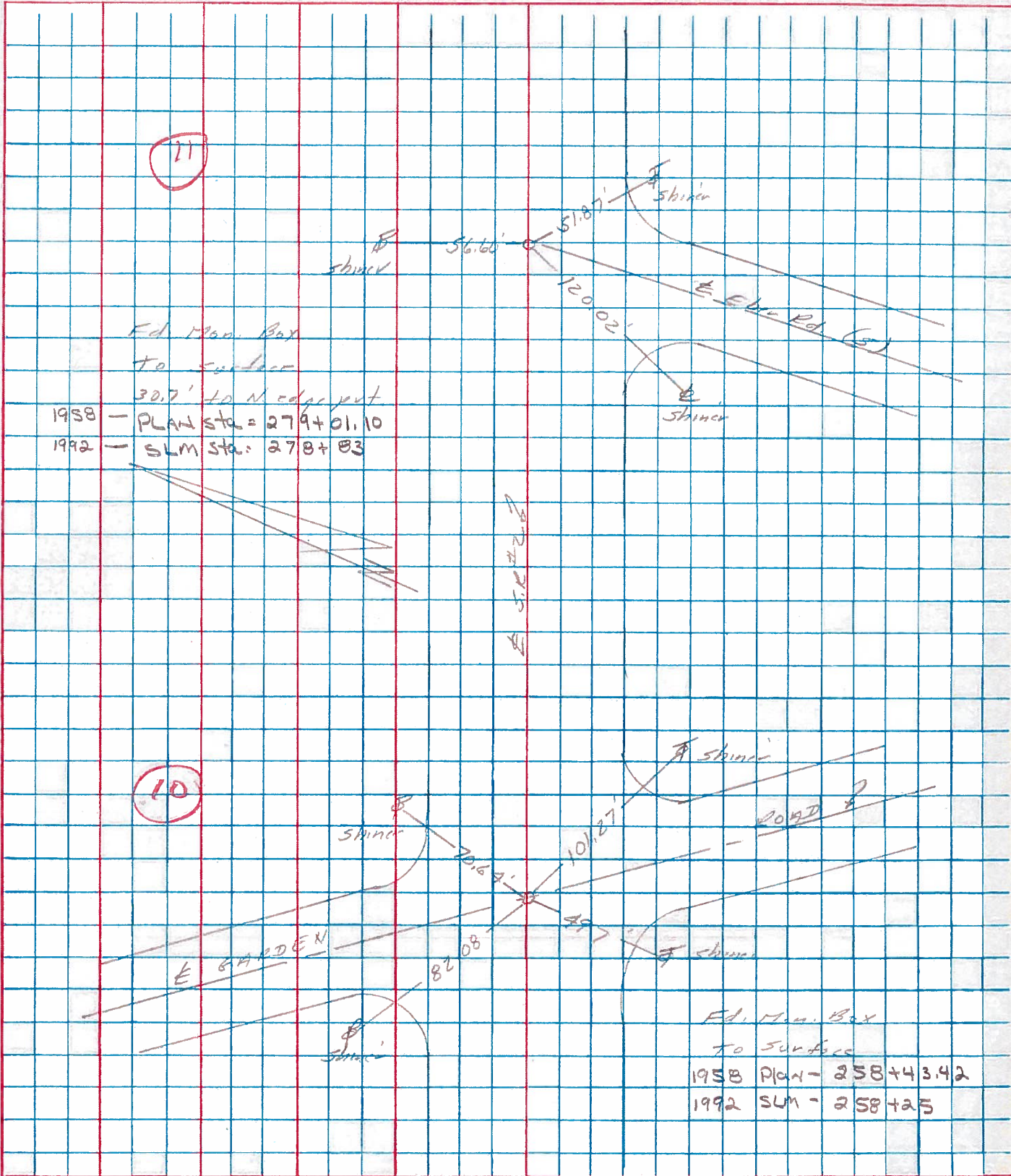


SPRINGFIELD  
MONCLOON



PERSONNEL \_\_\_\_\_ TITLE \_\_\_\_\_ PERSONNEL \_\_\_\_\_ TITLE \_\_\_\_\_  
 COUNTY Lucas DATE pt 77  
 S. R. #2 WEATHER H  
 SEC. Airport TEMP. \_\_\_\_\_

DESCRIPTION \_\_\_\_\_ Plumbers \_\_\_\_\_ JOB NO. \_\_\_\_\_  
 LEFT \_\_\_\_\_ CENTER LINE \_\_\_\_\_ RIGHT \_\_\_\_\_



PERSONNEL	TITLE	PERSONNEL	TITLE
COUNTY <u>Lucas</u> DATE <u>3-19-53</u>			
S. R. <u>#2</u> WEATHER _____			
SEC. _____ TEMP. _____			

DESCRIPTION	LEFT	CENTER LINE	RIGHT	JOB NO.
Sta. 185+37.3		(Did not find)		
	#121			
Sta. 224+50 Whitehouse Spencer Rd. Ed. shiner set by Turnpike crew.			N.E. to witness man. 58.22 N.W. to witness man. 33.54' S. to Co. B.M. 52.35'	
	#122 ⑨			
Sta. 258+42.8 Garden Rd. Brass cap			S.E. to shiner in 10' cat/pq. 51.70' E.S.E. to shiner in 4 <sup>th</sup> cat/pq. 90.38' N.E. to center of Gov. B.M. (E. of E. of E. of E.) 28.39' S.W. to witness man. 38.64' N.E. to witness man. 51.82'	
	#123 ⑩			
Sta. 279+01.10 Eber Rd. Brass plate ok 5-1-58			S.E. to N.W. cor. of conc. block fdn. 43.68 N.E. to witness man. 55.98 N.N.W. to witness man. 33.11' S.W. to shiner in T.P. 67.16	
	#124 ⑪			
Sta. 291+13.0		(Did not find)		
	#125			

PERSONNEL TITLE PERSONNEL TITLE

COUNTY LUCAS

DATE \_\_\_\_\_

S. R. #2

WEATHER \_\_\_\_\_

SEC. G & H

TEMP. \_\_\_\_\_

DESCRIPTION

LEFT

CENTER LINE

RIGHT

JOB NO. \_\_\_\_\_

Fd. #120  
3/19/53Intersection of S.R. #295 & S.R. #2  
Iron Rod in Conc.

(RECORDED)

⑧

58.38' N.E. To shiner in P. Pole  
60.46' N.W. To S.E. Cor. Conc. Block Bldg.  
62.69' E.S.E. To Wit. Mon.  
45.47' S.E. To Wit. Mon.Fd. #122  
3/19/53Intersection Whitehouse-Spencer Rd & S.R. #2  
Found shiner set by Survey Crew of Turnpike

Found Shiner

3-23-55

58.22' N.E. To Wit. Mon. ✓

James

33.54' N.W. " " " ✓

82.66' S.E. B/w Mon. Did not find

52.35

49.69' S.E. Co. B.M.

Fd. #123

3/19/53 Intersection GARDEN Rd. & S.R. #2  
Found BRASS Cap.

⑩

51.70' S.E. To shiner in 10" Catalpa.  
90.38' E.S.E. To shiner in 4th " "  
28.39' N.E. Center of Gov. B.M. (bent over)  
38.64' S.W. To Wit. Mon.  
51.82' N.E. Wit. Mon.

⑪

Intersection Eber Rd. & S.R. #2  
BRASS Plate43.68' S.E. To N.W. Cor. of Conc. Block Foundation  
61.73' S.W. To Wit. Mon. (bent over) loose  
55.98' N.E. To Wit. Mon.  
33.11' N.N.W. To " "  
17.16' S.W. shiner T. Pole