

O.D.O.T. DISTRICT 2 SURVEY OFFICE (USE ONLY)

PERSONNEL

REFERENCE NO. 12

SHEET 23 OF 29

NOTES LOEHRKE

DATE 3/29/94

ROUTE SR 2

H.C. CANTERBURY

WEATHER NICE

COUNTY LUCAS

R.C. VOGEL

TEMP. 50°

TOWNSHIP SPRINGFIELD

DWG BY RHOADES

PID 88525

SECTION 31

T 8 N R 10 E

TYPE MONUMENT MONBOX

ON SURFACE - ~~BELOW~~ ON

OFFSET ☉ PAVEMENT ON LT : RT

25.0' TO RT EDGE PAVEMENT

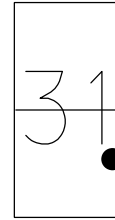
STATION: 348+59.11

HORZ.DATUM: NAD83(2011)

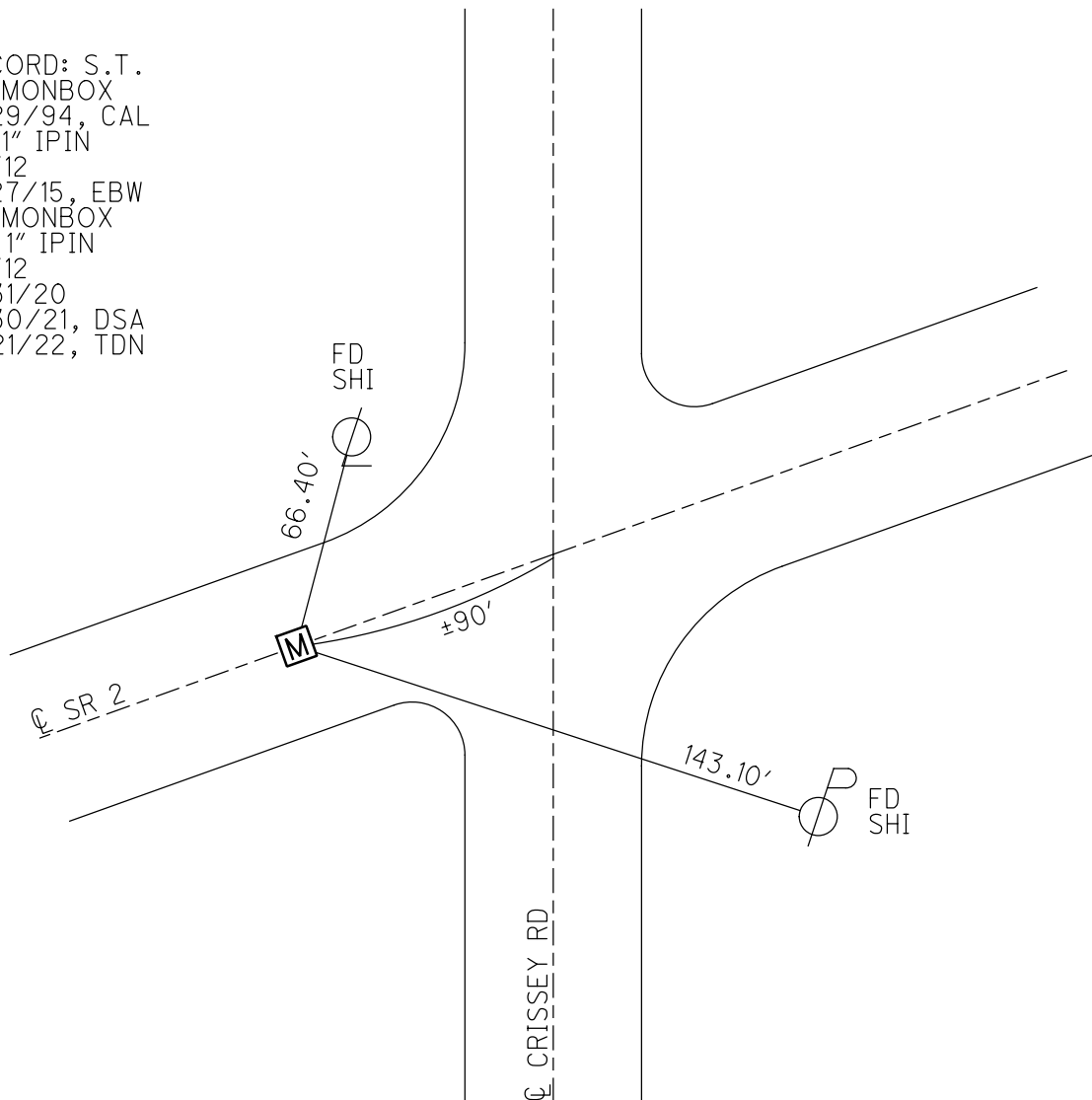
GEOID: NAVD88 2018

GRID: NORTHING: 709474.321

EASTING: 1623446.929



RECORD: S.T.
 FD MONBOX
 3/29/94, CAL
 FD 1" IPIN
 REF12
 2/27/15, EBW
 FD MONBOX
 W/ 1" IPIN
 REF12
 8/31/20
 4/30/21, DSA
 11/21/22, TDN



O.D.O.T. DISTRICT 2 SURVEY OFFICE (USE ONLY)

PERSONNEL

REFERENCE NO. 12

SHEET 23 OF 31

NOTES LOEHRKE DATE 3/29/94
H.C. CANTERBURY WEATHER NICE
R.C. VOGEL TEMP. 50°

ROUTE SR 2
COUNTY LUCAS
TOWNSHIP SPRINGFIELD
SECTION 31
T 8 N R 10 E

DWG BY NIESE PID 11616

TYPE MONUMENT MONBOX

ON SURFACE - ~~BELOW~~ ON

OFFSET Q PAVEMENT ON LT : RT

25.0' TO RT EDGE PAVEMENT

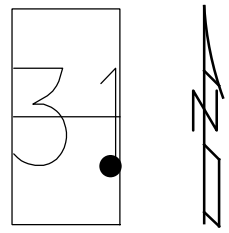
STATION: 345+59.11

HORIZ.DATUM: NAD83(2011)

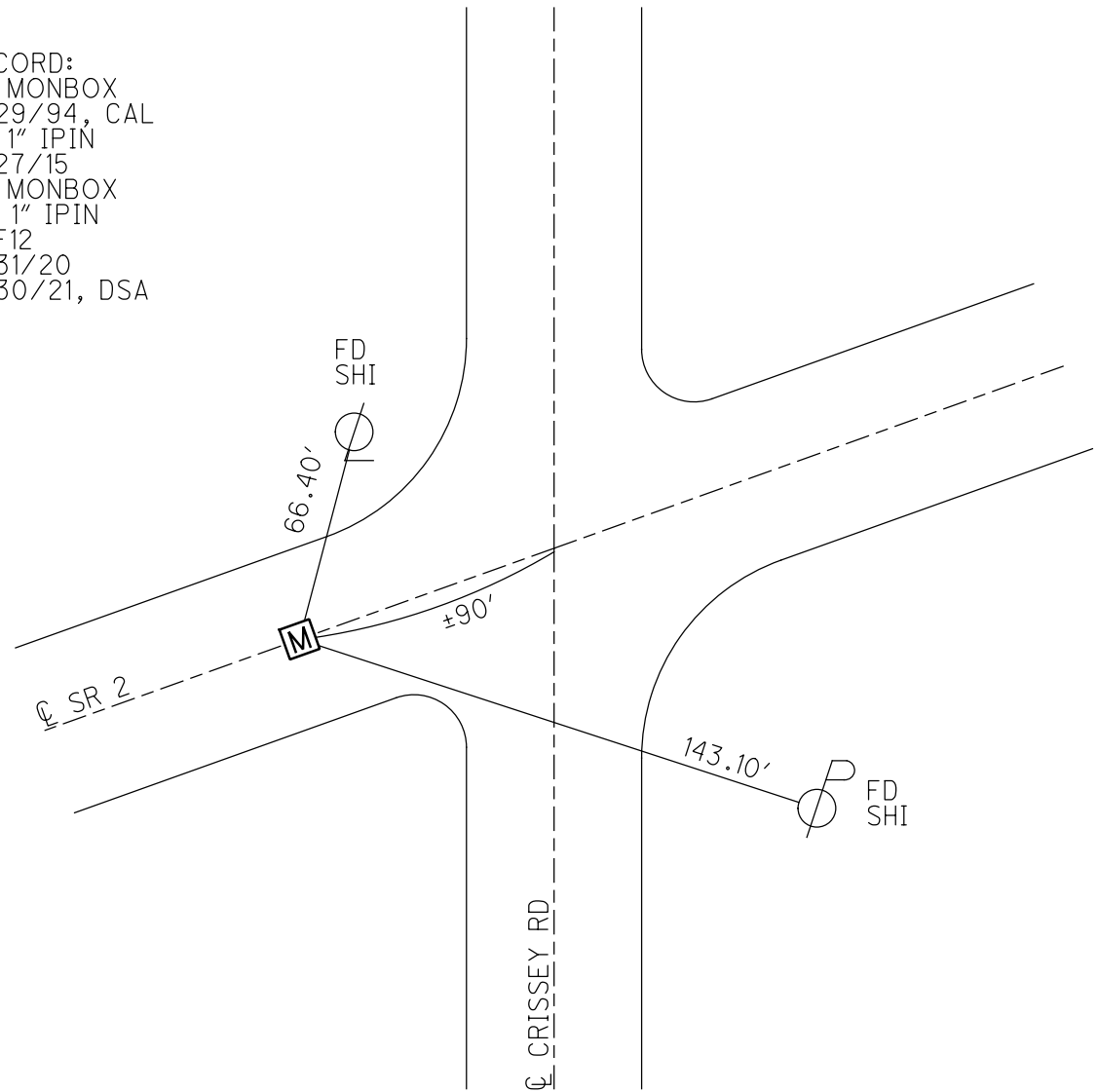
GEOID: NAVD88 2018

GRID: NORTHING: 709474.346

EASTING: 1623446.882



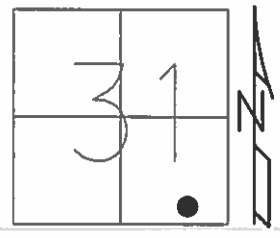
RECORD:
FD MONBOX
3/29/94, CAL
FD 1" IPIN
2/27/15
FD MONBOX
W/ 1" IPIN
REF12
8/31/20
4/30/21, DSA



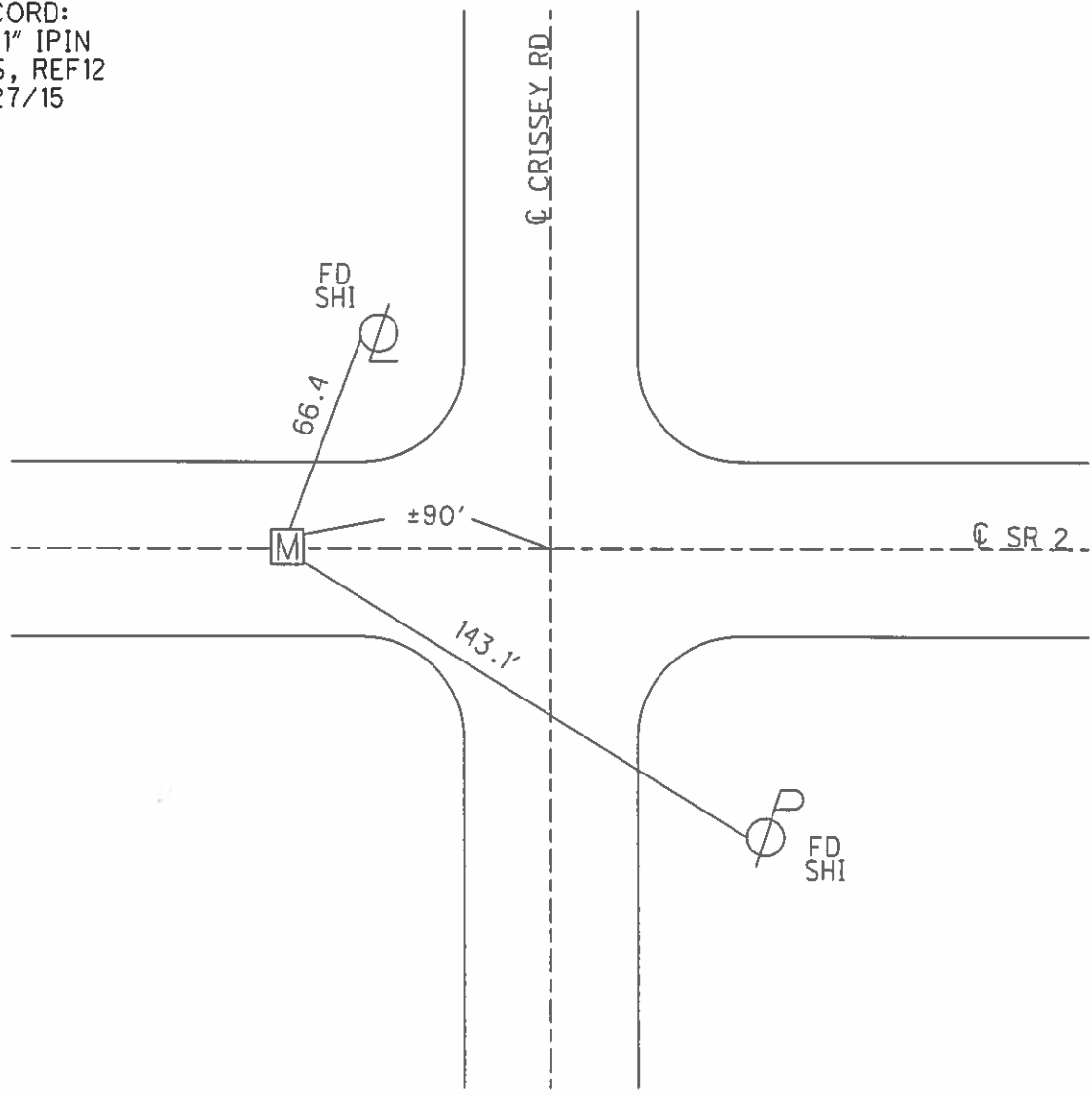
O.D.O.T. DISTRICT 2 SURVEY OFFICE (USE ONLY)

PERSONNEL _____ REFERENCE NO. 12 SHEET 23 OF 31
 NOTES LOEHRKE DATE 3/29/94 ROUTE SR 2
 H.C. CANTERBURY WEATHER NICE COUNTY LUCAS
 R.C. VOGEL TEMP. 50° TOWNSHIP SPRINGFIELD
 _____ SECTION 31
 _____ T 7 N R 10 E

TYPE MONUMENT MON BOX
 ON SURFACE - ~~BELOW~~ ON
~~LEFT~~ - Q PAV'T - ~~RIGHT~~ ON
25' TO RT EDGE PAVEMENT
 S.L.M. 345+59.11
 GRID: NORTHING: 709474.321 EASTING: 1623446.924



RECORD:
 FD 1" IPIN
 GPS, REF12
 2/27/15



O.D.O.T. DISTRICT 2 SURVEY OFFICE

PERSONNEL _____

REFERENCE NO. 12

SHEET 10 OF 25

NOTES LOEHRKE

H.C. CANTERBURY

R.C. VOGEL

DATE 3-29-94

WEATHER Nice

TEMP. +50

ROUTE S.R. 2

COUNTY LUCAS

TOWNSHIP SPRINGFIELD

SECTION 31 FRACTIONAL

T. 7 N. R. 10 E

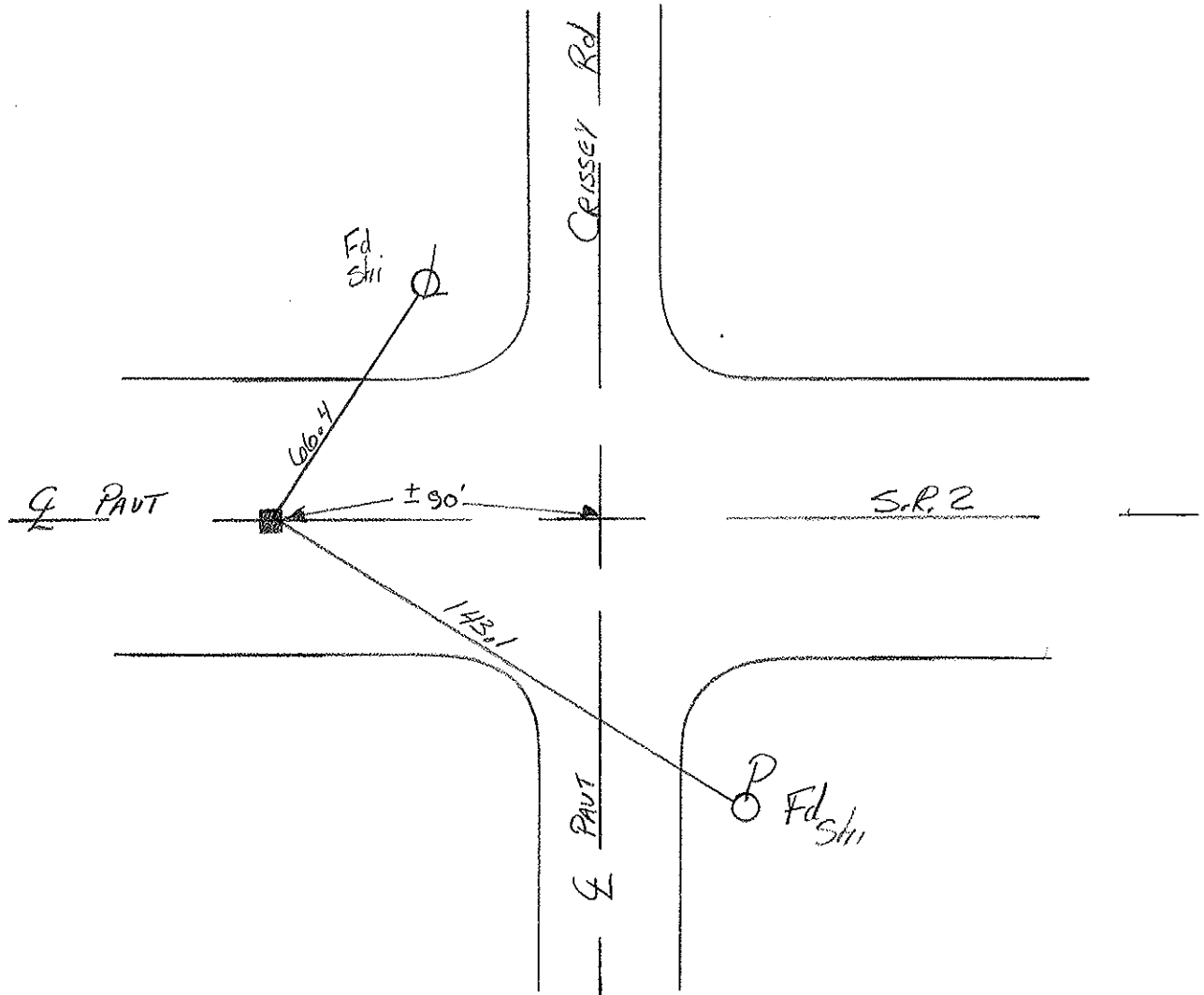
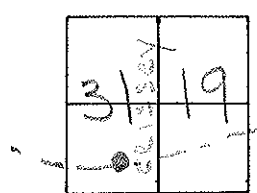
TYPE MONUMENT MGN BOY

ON SURFACE - ~~BELOW~~ Yes

~~LEFT - & PAVT. - RIGHT~~ Yes

25' TO Rt EDGE PAVEMENT

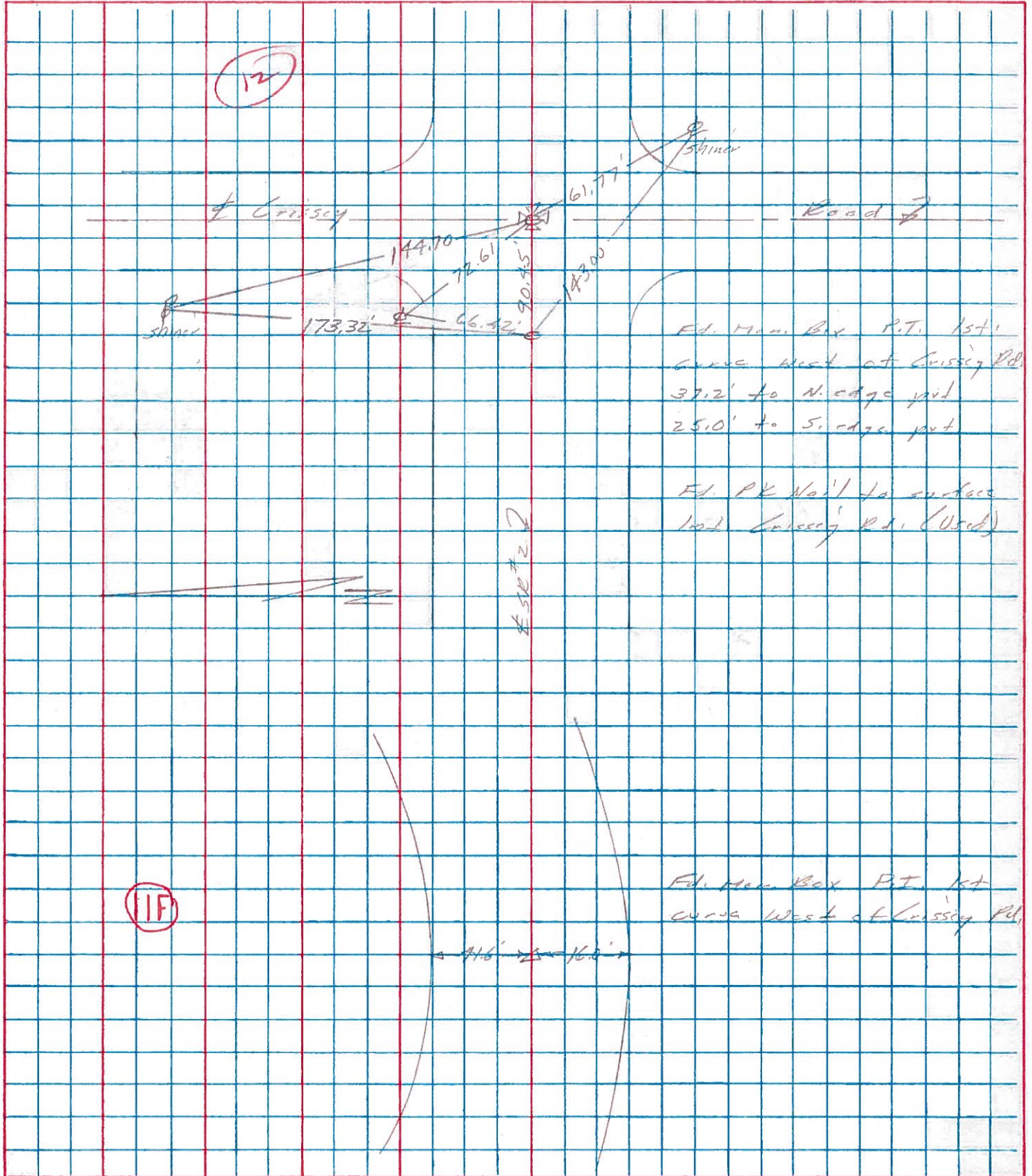
S.L.M. 347+47



PERSONNEL	TITLE	PERSONNEL	TITLE	COUNTY	DATE
Shaner				Lucas	1 st Sept. 77
E				S. R. #2	WEATHER Cloudy
Lucas				SEC.	TEMP. 60°

DESCRIPTION Reference to Control Points JOB NO. _____

LEFT CENTER LINE RIGHT



PERSONNEL TITLE PERSONNEL TITLE

COUNTY Lucas DATE 05-1-58
Bowerman

S. R. #2 WEATHER

SEC. TEMP.

DESCRIPTION LEFT CENTER LINE RIGHT JOB NO.

Sta. 300+00	(Did not find)			
	#126			
Sta. 2+43.11				
app. 3/4 mi. west of Cressy Rd.				
Iron bolt 0.2 below sun cc.				
	#127			
Sta. 46+48.16				
Cressy Rd.				
Fd. shiner	(12)			
	#128			
Sta. 66+21.66				
1 st curve East of Cressy Rd.				
P.I. Note: PK. is 3.5' E. of mon.				
	#129			
Sta. 73+69.07				
mon. - iron rod - R.R. K.				
	#130			

N. to shiner in T.P.	53.60'	
E.N.E. to shiner in P.P.	60.82'	
W.N.W. to shiner in P.P.	83.10'	
S.S.W. to shiner in T.P.	63.76'	
S. to + in pump island	54.84'	
N.W. to shiner in P.P.	25.30	
S.W. to shiner in 12" Elm	59.80	
N.E. to shiner in T.P.	74.52	
S.E. to roofing nail in N.W. car bldg.	71.10'	
	(P.K. nail) (Mon.)	
N.W. to shiner in P.P.	51.38	47.65
N.N.W. to spike in T.P.	51.80'	50.00
E.N.E. to shiner in P.P.	80.42'	83.52
S.W. to shiner in P.	57.14'	55.50
N. to shiner in 12" tree	42.87'	
N.E. to Near car top cone blk. porch Pdn.	75.41	
N.W. to shiner in P.P.	41.21	
S.E. to R.R. spike in T.P.	41.87	
S. to witness mon.	28.52	
N.E. to witness mon.	39.96	
N.W. to witness mon.	39.73'	